

Light efficiency:

73 Lumen/Watt

Light quality:

CRI: 79.8

Color temperature:

2928 K

Output: 3754 lm

Peak: 7148 cd

Power: 51.1 W

PF: 1.0



Beam angle

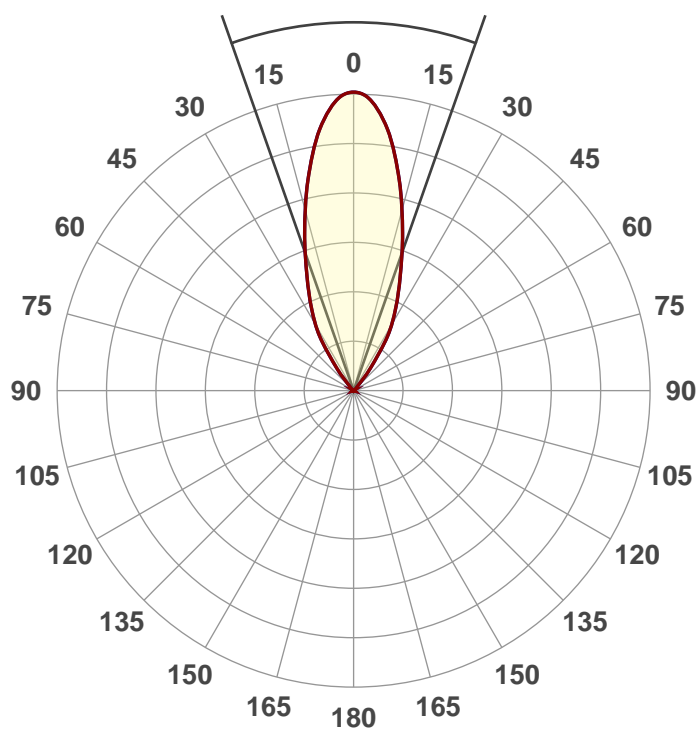
38.7°

Product name:

608RA-6-XTM19-50LM-30K-83-
DA40-UNV-DIM10-MC-S

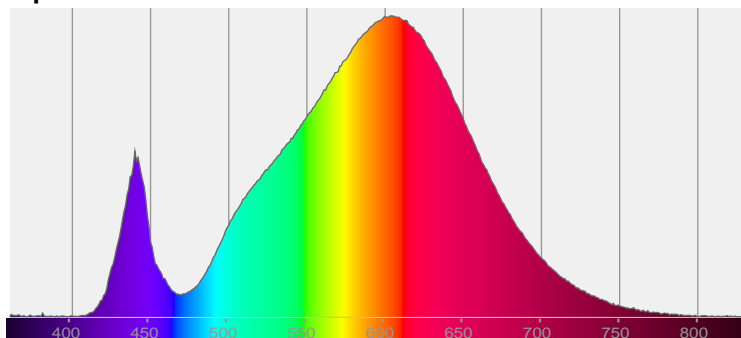
Date and time:

12/5/2017 8:14:56 AM

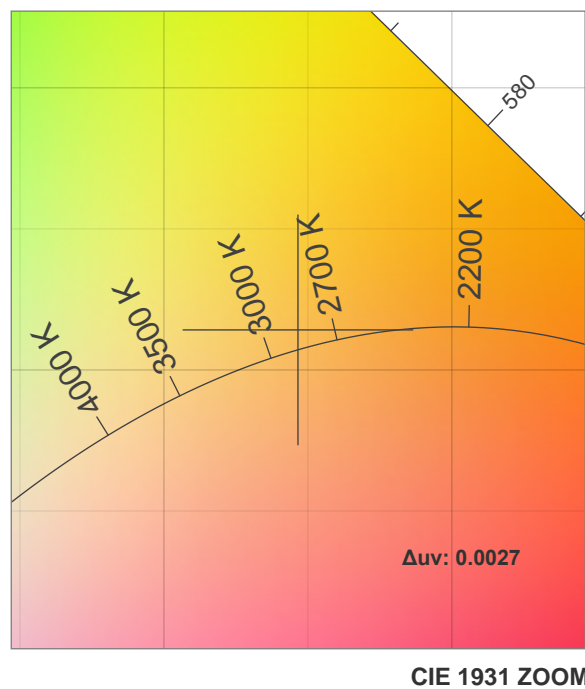
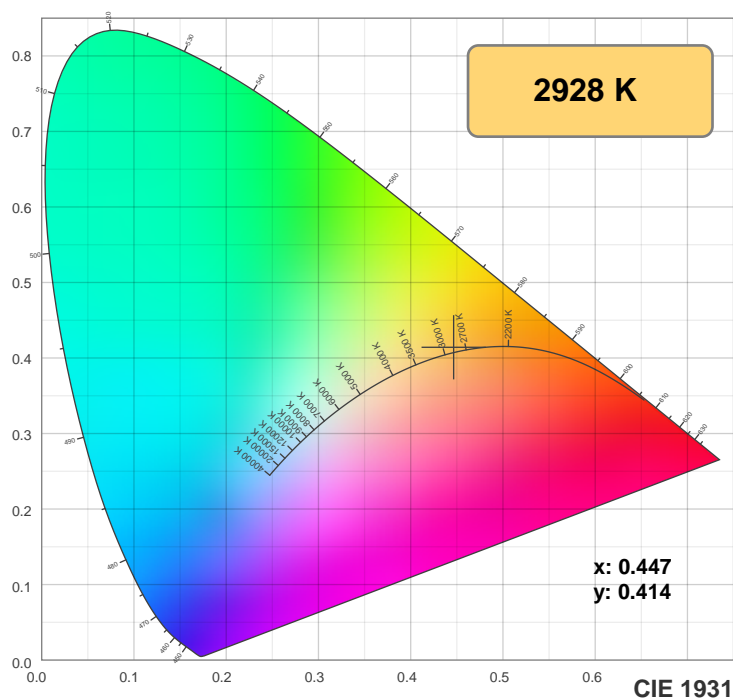


CIE 1931
x: 0.447
y: 0.414

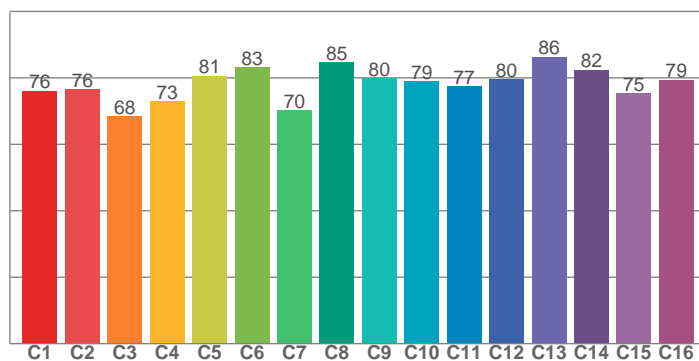
Spectra



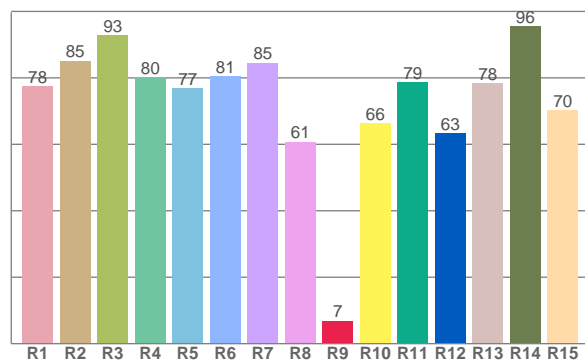
Color details



TM30: 77.9



CRI: 79.8 (R1-R8)



CRI R values, only R1-R8 are used to calculate final CRI value

R1	R2	R3	R4	R5	R6	R7	R8	R9	R10	R11	R12	R13	R14	R15
77.5	85.1	92.9	80.1	76.8	80.6	84.5	60.8	6.9	66.4	78.7	63.3	78.4	95.6	70.3

TM30 C values, 16 binned values out of total of 99 C values

C1	C2	C3	C4	C5	C6	C7	C8	C9	C10	C11	C12	C13	C14	C15	C16
76.1	76.5	68.4	73.0	80.6	83.2	70.2	84.6	79.8	78.9	77.4	79.6	86.3	82.4	75.3	79.4

Color parameters

Color temperature	Color rendering index	Red component	Color fidelity	Color gamut	Color coordinate cie 1931	Color coordinate cie 1931	Color coordinate	Color coordinate	Color deviation from black body
CCT	CRI	CRI R9	TM30 Rf	TM30 Rg	x	y	u	v	Δuv
2928 K	79.8	6.9	77.9	98.6	0.447	0.414	0.252	0.351	0.0027

TM30 details

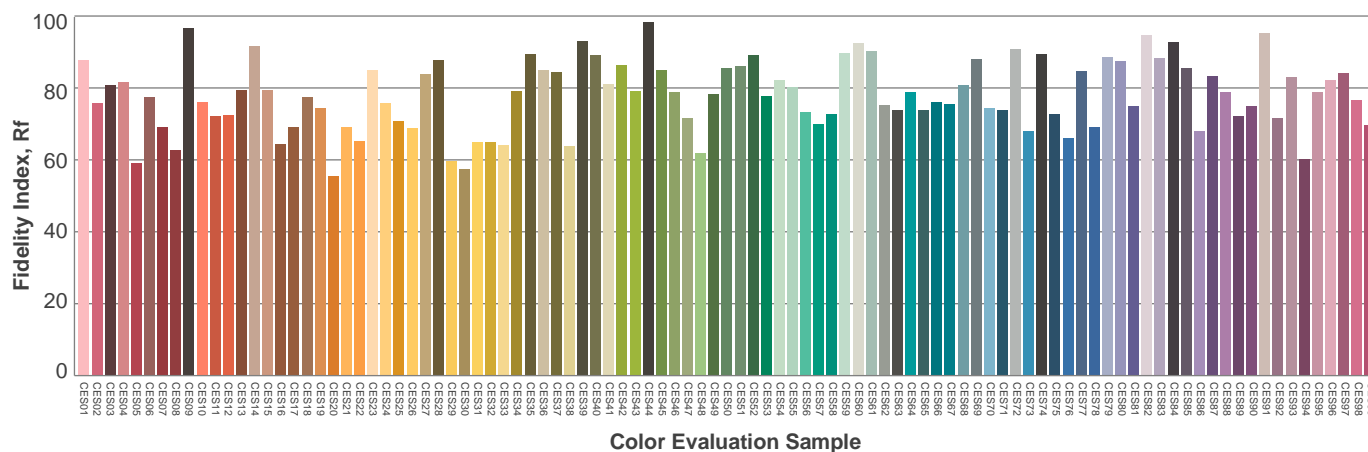
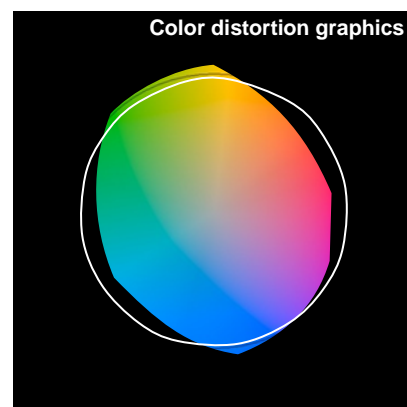
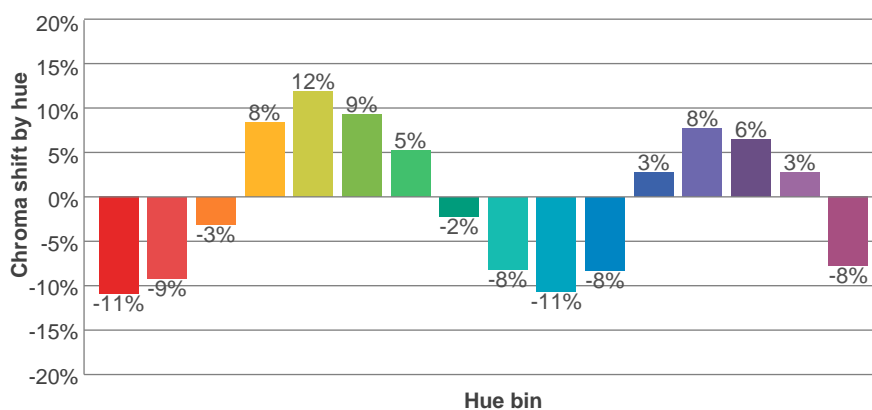
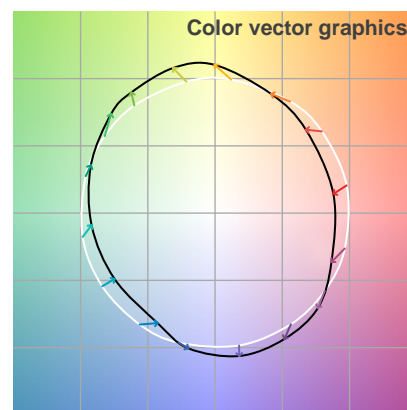
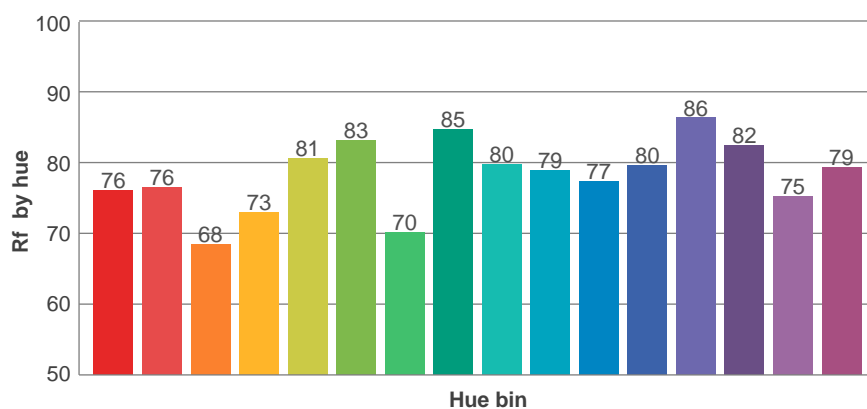
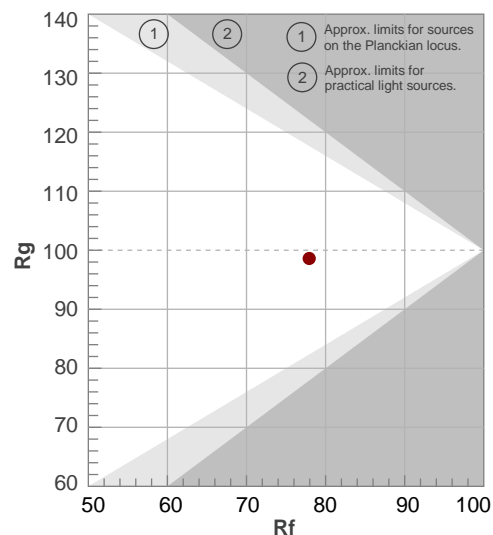
Rf 77.9

Fidelity index Rf

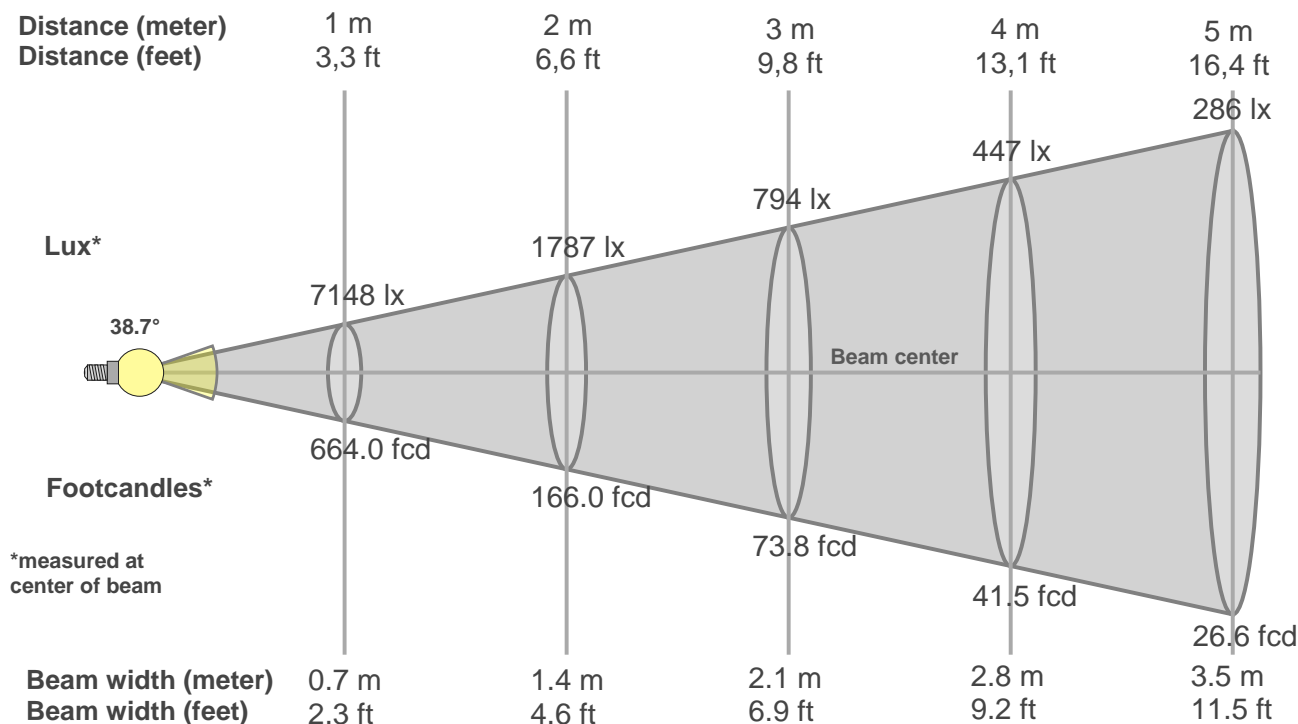
Rg 98.6

Gammut index Rg

Hue Bin	R _f	Graphic shifts (%)	
		Chroma	Hue
1	76	-11%	-4%
2	76	-9%	8%
3	68	-3%	15%
4	73	8%	14%
5	81	12%	8%
6	83	9%	-3%
7	70	5%	-16%
8	85	-2%	-9%
9	80	-8%	-7%
10	79	-11%	1%
11	77	-8%	11%
12	80	3%	8%
13	86	8%	-1%
14	82	6%	-10%
15	75	3%	-13%
16	79	-8%	-12%



Beam details



Beam intensities from 1-20m

1m	2m	3m	4m	5m	6m	7m	8m	9m	10m	11m	12m	13m	14m	15m	16m	17m	18m	19m	20m
3.3ft	6.6ft	9.8ft	13.1ft	16.4ft	19.7ft	23ft	26.2ft	29.5ft	32.8ft	36.1ft	39.4ft	42.7ft	45.9ft	49.2ft	52.5ft	55.8ft	59.1ft	62.3ft	65.6ft
7148lx	1787lx	794lx	447lx	286lx	199lx	146lx	112lx	88lx	71lx	59lx	50lx	42lx	36lx	32lx	28lx	25lx	22lx	20lx	18lx
664fcd	166fcd	73.8fcd	41.5fcd	26.6fcd	18.4fcd	13.6fcd	10.4fcd	8.2fcd	6.6fcd	5.5fcd	4.6fcd	3.9fcd	3.4fcd	3fcd	2.6fcd	2.3fcd	2fcd	1.8fcd	1.7fcd

Intensities in 0° c-plane

0°	2°	4°	6°	8°	10°	12°	14°	16°	18°	20°	22°	24°	26°	28°	30°	32°	34°	36°	38°
7148	7148	6912	6606	6245	5764	5283	4796	4309	3852	3440	3029	2714	2406	2111	1831	1548	1192	835	557
100%	100%	97%	92%	87%	81%	74%	67%	60%	54%	48%	42%	38%	34%	30%	26%	22%	17%	12%	8%

Intensities in 90° c-plane

0°	2°	4°	6°	8°	10°	12°	14°	16°	18°	20°	22°	24°	26°	28°	30°	32°	34°	36°	38°
7148	7148	6912	6606	6245	5764	5283	4796	4309	3852	3440	3029	2714	2406	2111	1831	1548	1192	835	557
100%	100%	97%	92%	87%	81%	74%	67%	60%	54%	48%	42%	38%	34%	30%	26%	22%	17%	12%	8%

Intensities in 180° c-plane

0°	2°	4°	6°	8°	10°	12°	14°	16°	18°	20°	22°	24°	26°	28°	30°	32°	34°	36°	38°
7148	7148	6912	6606	6245	5764	5283	4796	4309	3852	3440	3029	2714	2406	2111	1831	1548	1192	835	557
100%	100%	97%	92%	87%	81%	74%	67%	60%	54%	48%	42%	38%	34%	30%	26%	22%	17%	12%	8%

Intensities in 270° c-plane

0°	2°	4°	6°	8°	10°	12°	14°	16°	18°	20°	22°	24°	26°	28°	30°	32°	34°	36°	38°
7148	7148	6912	6606	6245	5764	5283	4796	4309	3852	3440	3029	2714	2406	2111	1831	1548	1192	835	557
100%	100%	97%	92%	87%	81%	74%	67%	60%	54%	48%	42%	38%	34%	30%	26%	22%	17%	12%	8%

Beam angle 50%	Field angle 10%	Cutoff angle 2,5%	Intensity ratio in 120° cone	Intensity ratio in 90° cone
38.7°	73.3°	83°	99.9%	99.2%