

Light efficiency:



Light quality:



Color temperature:



Output: 1058 lm

Peak: 469 cd

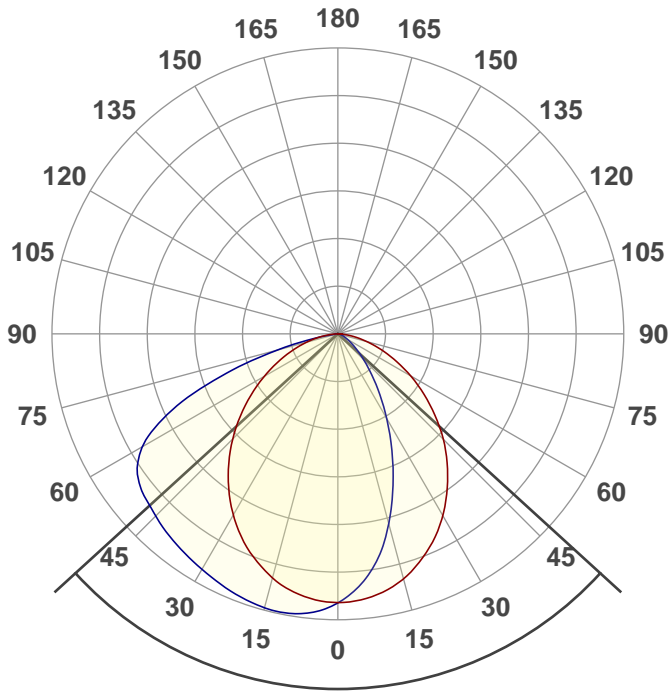
Power: 23.6 W

PF: 0.97



DW10-SW-30K-90-WW-UNV-DIM10-NC-WH

Date and time:
5/13/2019 11:08:38 AM

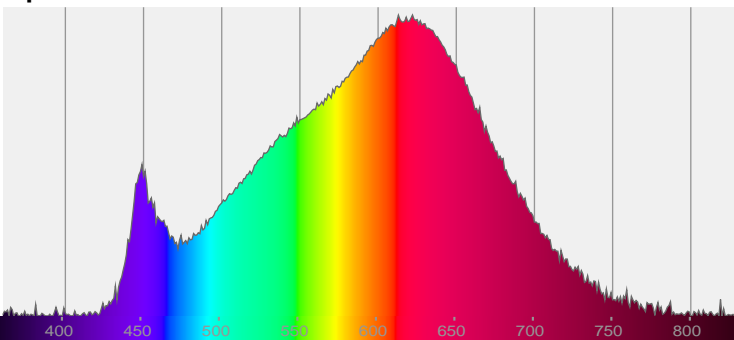


Beam angle **95.3°**

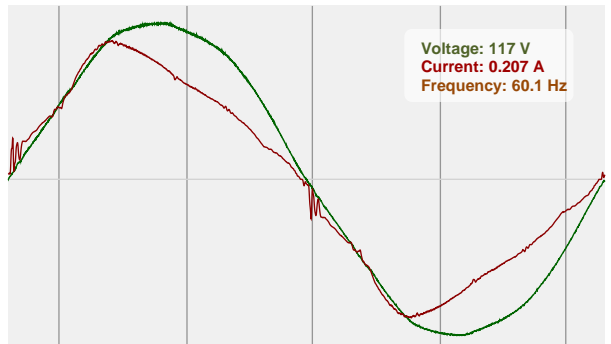


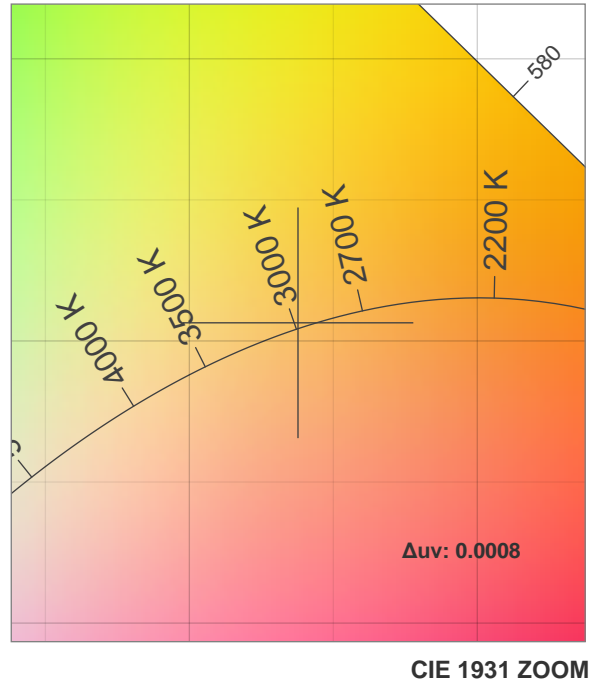
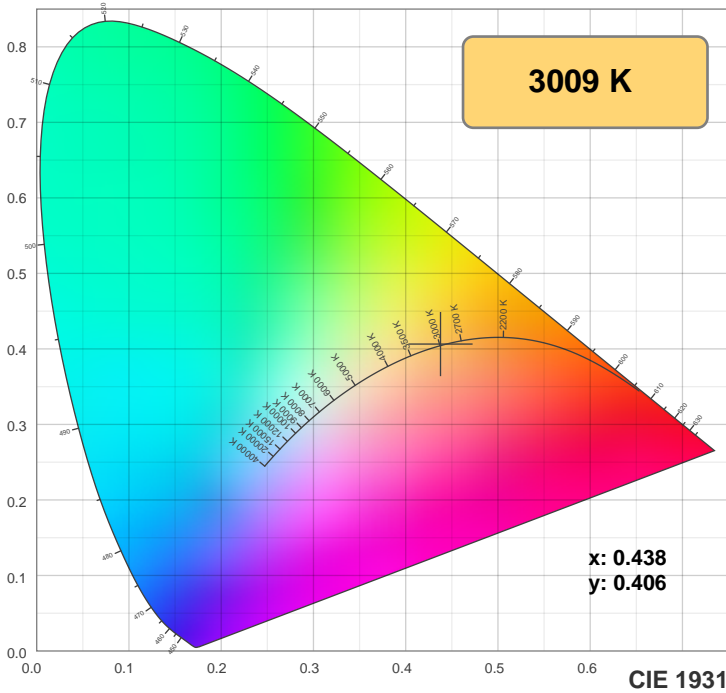
CIE 1931
x: 0.438
y: 0.406

Spectra

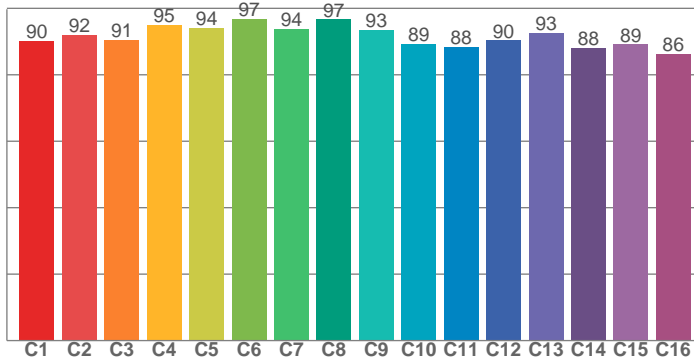


Power

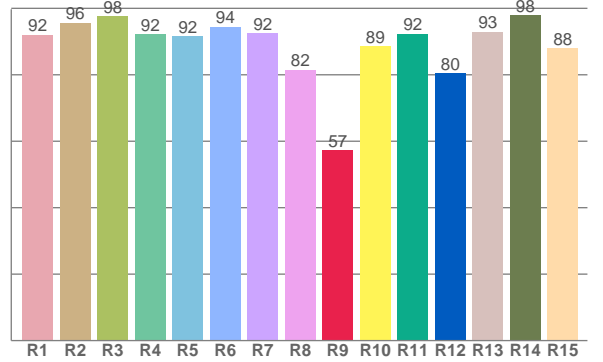




TM30: 91.7



CRI: 92.2 (R1-R8)



CRI R values, only R1-R8 are used to calculate final CRI value

R1	R2	R3	R4	R5	R6	R7	R8	R9	R10	R11	R12	R13	R14	R15
92.1	95.7	97.6	92.2	91.5	94.4	92.4	81.5	57.3	88.6	92.3	80.4	93.0	98.0	88.0

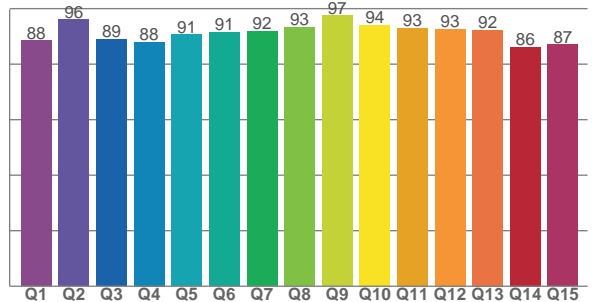
TM30 C values, 16 binned values out of total of 99 C values

C1	C2	C3	C4	C5	C6	C7	C8	C9	C10	C11	C12	C13	C14	C15	C16
90.3	92.0	90.6	95.0	94.2	96.8	93.8	96.7	93.4	89.3	88.3	90.3	92.5	88.2	89.1	86.3

CQS Q values

Q1	Q2	Q3	Q4	Q5	Q6	Q7	Q8	Q9	Q10	Q11	Q12	Q13	Q14	Q15
88.5	96.0	89.0	88.0	90.6	91.5	91.8	93.3	97.5	94.0	93.1	92.7	92.3	86.2	87.0

CQS: 90.8



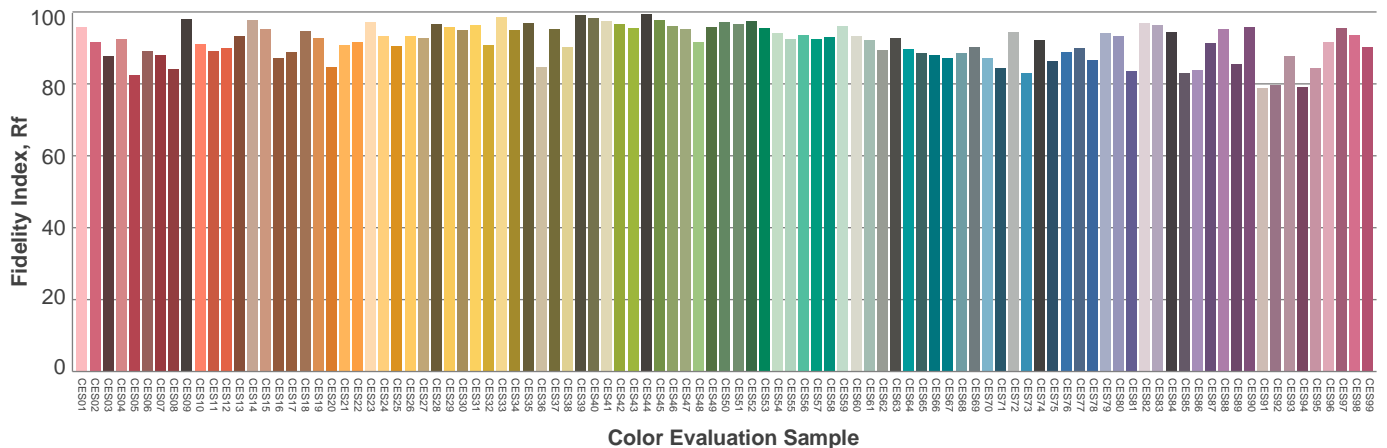
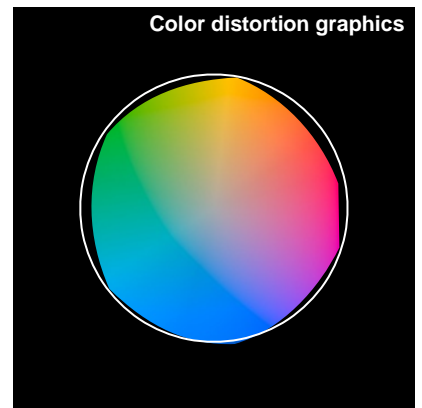
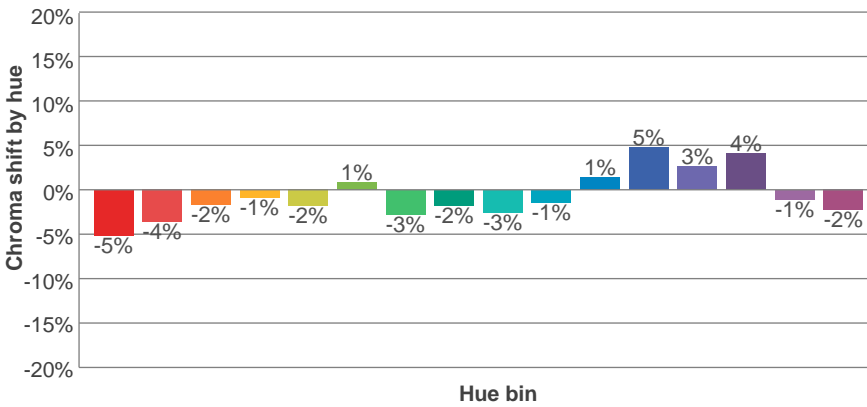
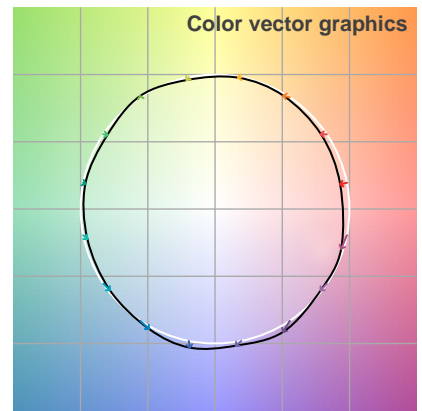
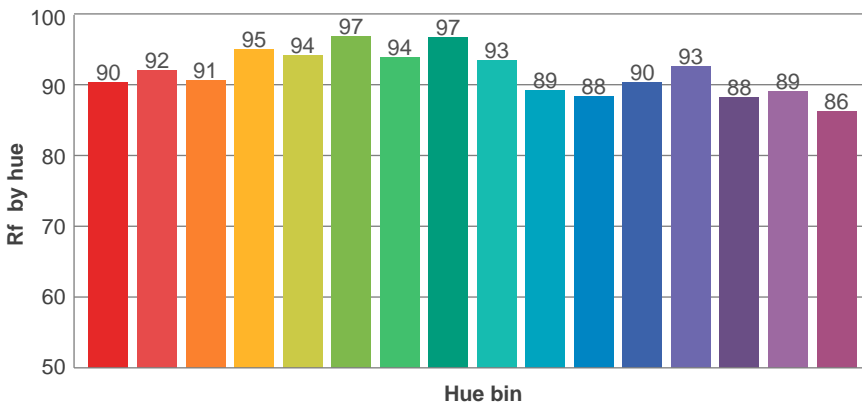
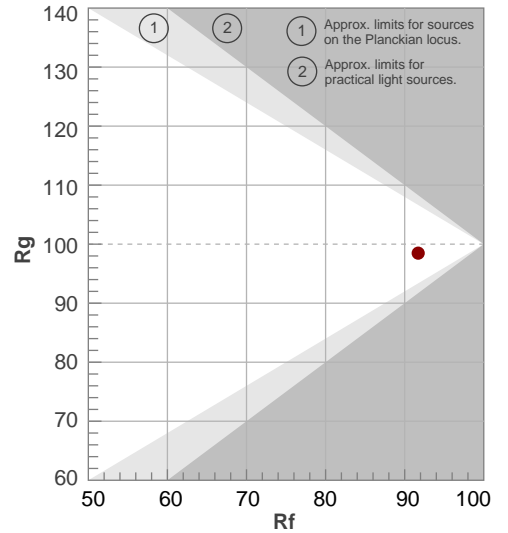
Color parameters

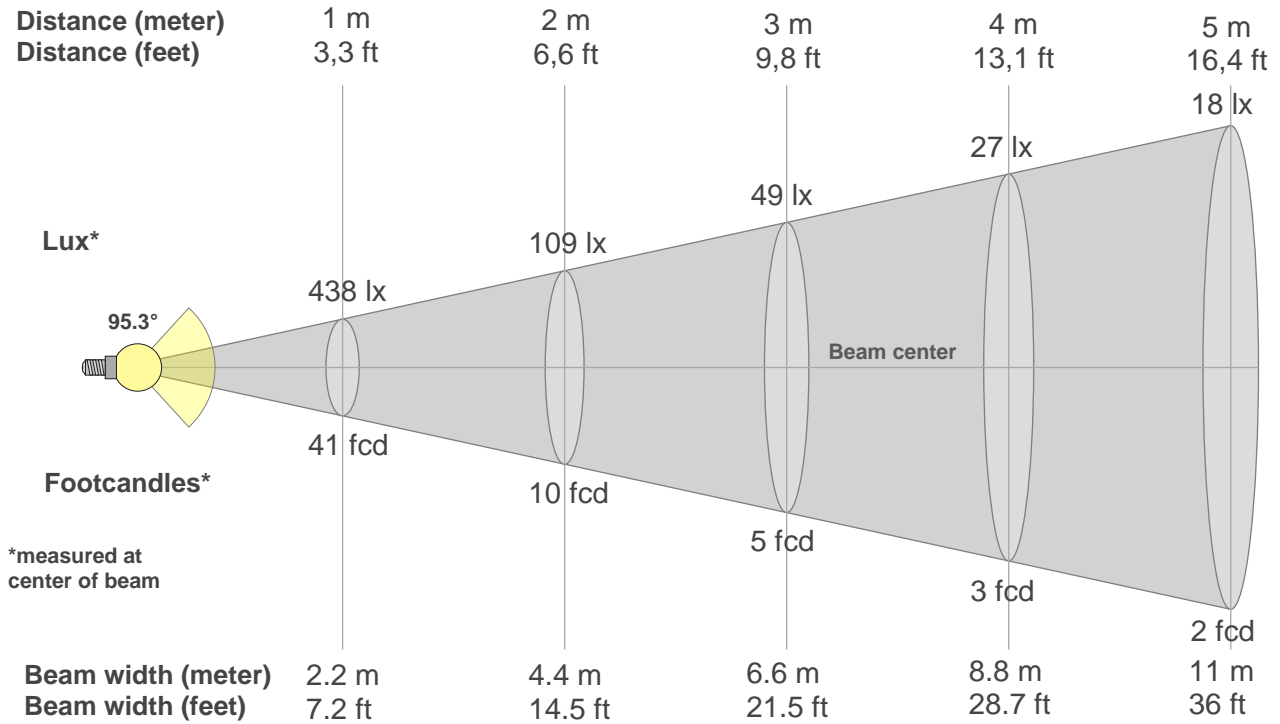
Color temperature	Color rendering index	Red component	Color fidelity	Color gamut	Color quality scale	Color coordinate cie 1931	Color coordinate cie 1931	Color coordinate	Color coordinate	Color deviation from black body
CCT	CRI	CRI R9	TM30 Rf	TM30 Rg	CQS	x	y	u	v	Δuv
3009 K	92.2	57.3	91.7	98.5	90.8	0.438	0.406	0.250	0.348	0.0008

Rf 91.7
Fidelity index Rf

Rg 98.5
Gammut index Rg

Hue Bin	R _f	Graphic shifts (%)	
		Chroma	Hue
1	90	-5%	0%
2	92	-4%	3%
3	91	-2%	5%
4	95	-1%	2%
5	94	-2%	2%
6	97	1%	0%
7	94	-3%	-1%
8	97	-2%	0%
9	93	-3%	3%
10	89	-1%	7%
11	88	1%	9%
12	90	5%	2%
13	93	3%	-5%
14	88	4%	-9%
15	89	-1%	-7%
16	86	-2%	-11%





Beam intensities from 1-20m

1m	2m	3m	4m	5m	6m	7m	8m	9m	10m	11m	12m	13m	14m	15m	16m	17m	18m	19m	20m
3.3ft	6.6ft	9.8ft	13.1ft	16.4ft	19.7ft	23ft	26.2ft	29.5ft	32.8ft	36.1ft	39.4ft	42.7ft	45.9ft	49.2ft	52.5ft	55.8ft	59.1ft	62.3ft	65.6ft
438lx	109lx	49lx	27lx	18lx	12lx	9lx	7lx	5lx	4lx	4lx	3lx	3lx	2lx	2lx	2lx	2lx	1lx	1lx	1lx
40.7fcd	10.2fcd	4.5fcd	2.5fcd	1.6fcd	1.1fcd	0.8fcd	0.6fcd	0.5fcd	0.4fcd	0.3fcd	0.3fcd	0.2fcd	0.2fcd	0.2fcd	0.2fcd	0.1fcd	0.1fcd	0.1fcd	0.1fcd

Intensities in 0° c-plane

0°	5°	10°	15°	20°	25°	30°	35°	40°	45°	50°	55°	60°	65°	70°	75°	80°	85°	90°	95°
438	435	427	413	394	370	342	311	278	243	207	171	137	104	75	49	28	10	0	0
100%	99%	98%	94%	90%	85%	78%	71%	63%	56%	47%	39%	31%	24%	17%	11%	6%	2%	0%	0%

Intensities in 90° c-plane

0°	5°	10°	15°	20°	25°	30°	35°	40°	45°	50°	55°	60°	65°	70°	75°	80°	85°	90°	95°
438	411	372	320	263	209	160	118	85	60	41	28	18	12	8	5	3	2	0	0
100%	94%	85%	73%	60%	48%	36%	27%	19%	14%	9%	6%	4%	3%	2%	1%	1%	0%	0%	0%

Intensities in 180° c-plane

0°	5°	10°	15°	20°	25°	30°	35°	40°	45°	50°	55°	60°	65°	70°	75°	80°	85°	90°	95°
438	435	426	412	392	368	341	310	277	242	207	172	139	107	79	53	31	11	1	0
100%	99%	97%	94%	89%	84%	78%	71%	63%	55%	47%	39%	32%	25%	18%	12%	7%	2%	0%	0%

Intensities in 270° c-plane

0°	5°	10°	15°	20°	25°	30°	35°	40°	45°	50°	55°	60°	65°	70°	75°	80°	85°	90°	95°
438	455	462	462	458	451	444	436	429	420	411	397	365	300	204	103	28	1	1	0
100%	104%	106%	106%	105%	103%	101%	100%	98%	96%	94%	91%	83%	69%	47%	24%	6%	0%	0%	0%

Beam angle 50%	Field angle 10%	Cutoff angle 2,5%	Intensity ratio in 120° cone	Intensity ratio in 90° cone
{B_ANG}°	137.2°	154.9°	79.6%	55.3%