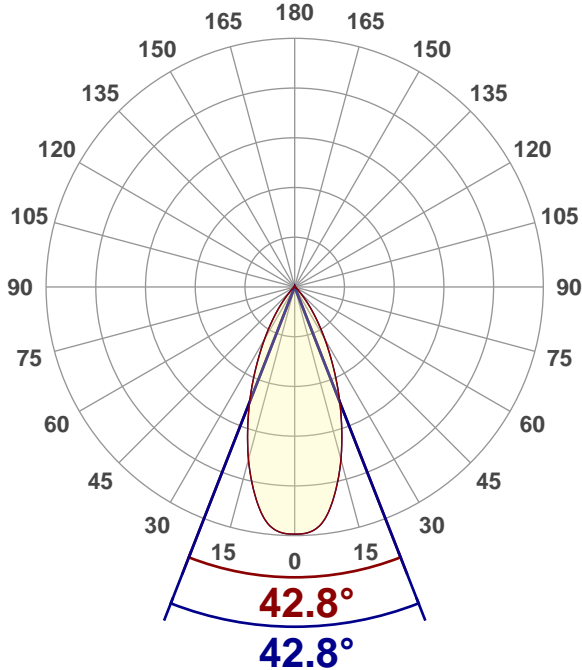


**Light efficiency:****77 Lumen/Watt****Color temperature:****3445 K****Light quality:****CRI:93.8, R<sub>g</sub>:91.0, R<sub>f</sub>:100.8****P: 2 / V: - / F: 2****Output: 2244 lm****Peak: 3731 cd****Power: 29.0 W****Voltage: 120 V****Current: 0.242 A****PF: 0.9****THD: n/a %****Angular Distribution****0° and 90° plane****Product name:****S3RGWS-D35MC-xx1-xxx****Test Date:****2020-05-27****Beam Angle (50% of the brightness of the centre):****42.8°****Field Angle (10% of the brightness of the centre):****74.9°****Cut Off Angle (2.5% of the brightness of the centre):****91°****Beam Details****\*measured at centre of beam**

<b>Mounting Height (feet)/(meter)</b>	<b>Lux*</b>	<b>Footcandles*</b>	<b>Beam width (feet) / (meter)</b>
4 ft / 1.2 m	2510 lx	233 fc	3.1 ft / 1 m
8 ft / 2.4 m	628 lx	58 fc	6.3 ft / 1.9 m
12 ft / 3.7 m	279 lx	26 fc	9.4 ft / 2.9 m
16 ft / 4.9 m	157 lx	15 fc	12.5 ft / 3.8 m
20 ft / 6.1 m	100 lx	9 fc	15.7 ft / 4.8 m

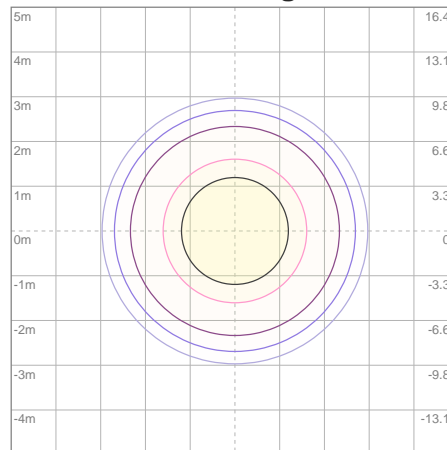
**Beam center**

# Photometric Testing Report

## Zonal Lumen Summary

Zone	Lumen	%Luminaire
0-30	1730	77.09%
0-40	2060	91.80%
0-60	2182	97.24%
60-90	34.2	1.52%
70-100	20.5	0.91%
90-120	11.4	0.51%
0-90	2216	98.75%
90-180	27.8	1.24%
0-180	2244	100.00%

## ISO Lux Diagram



Lux at center:	401 lx
3%	12.03 lx
5%	20.05 lx
10%	40.10 lx
30%	120.30 lx
50%	200.50 lx

**Conditions:**  
Number of planes: 8  
Lux distribution on a surface when lamp is mounted at 3.05 meters from the surface.

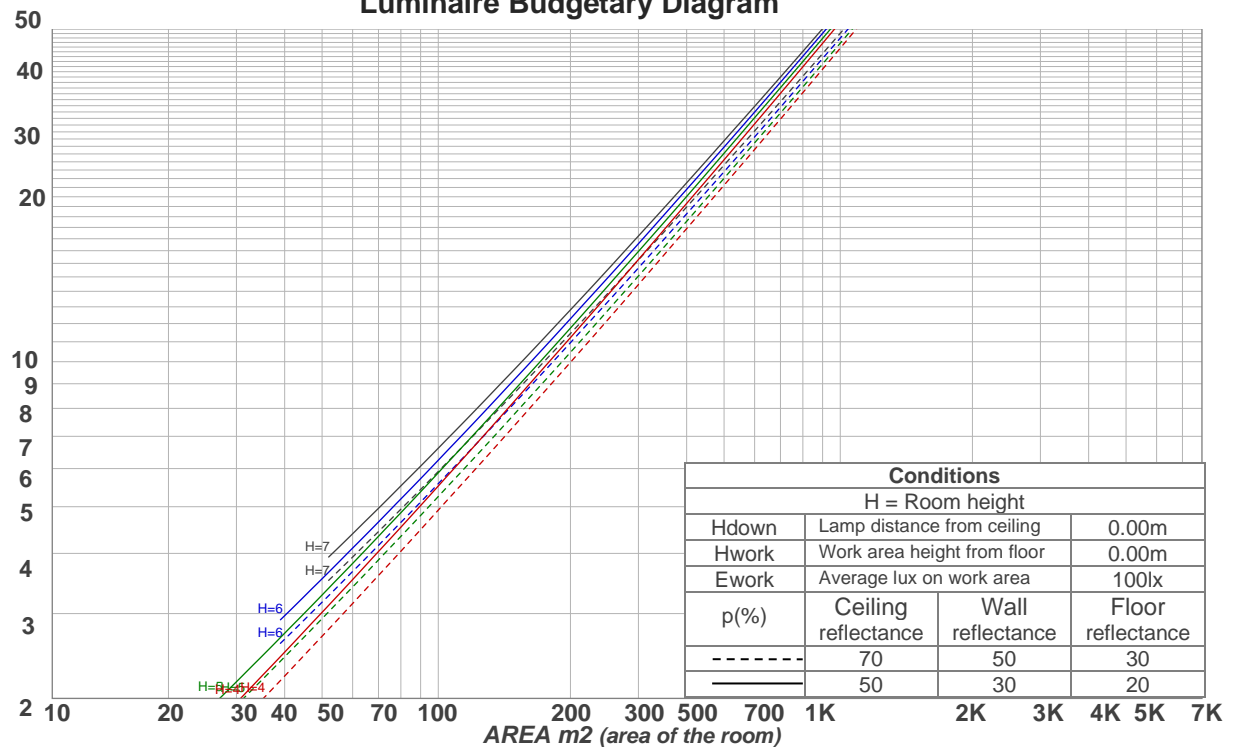
Mounting height: 3.05 meters (10 feet)

## Coefficients of Utilization

Ceiling reflectance	80				70				50			30			10			0
Wall reflectance	70	50	30	10	70	50	30	10	50	30	10	50	30	10	50	30	10	0
Floor reflectance	20	20	20	20	20	20	20	20	20	20	20	20	20	20	20	20	20	0
RCR	(RCR: Room Cavity Ratio) Room Values are expressed as percentage of Lumens delivered to the task surface																	
0	119	119	119	119	116	116	116	116	110	110	110	105	105	105	101	101	101	99
1	113	111	108	106	111	108	106	104	104	102	101	100	99	98	97	95	95	93
2	108	103	99	96	106	101	98	95	98	95	93	95	93	91	92	90	88	87
3	103	97	92	88	101	95	91	87	93	89	86	90	87	84	88	85	83	81
4	98	91	86	82	96	90	85	81	88	83	80	85	82	79	83	80	78	77
5	94	86	80	76	92	85	80	76	83	78	75	81	77	74	80	76	74	72
6	89	81	75	71	88	80	75	71	79	74	71	77	73	70	76	72	69	68
7	86	77	71	67	84	76	71	67	75	70	67	73	69	66	72	69	66	64
8	82	73	67	63	81	72	67	63	71	66	63	70	66	63	69	65	62	61
9	78	69	64	60	77	69	64	60	68	63	60	67	63	59	66	62	59	58
10	75	66	61	57	74	66	60	57	65	60	57	64	60	57	63	59	56	55

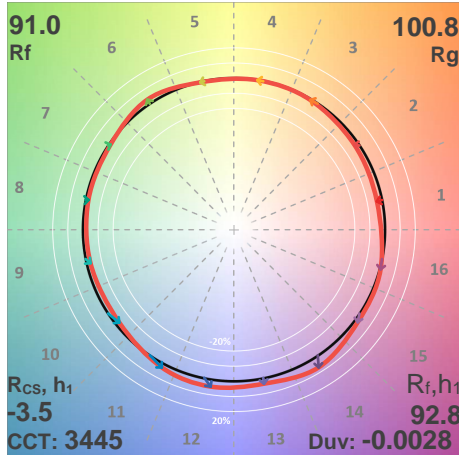
LAMPS (number of lamps)

## Luminaire Budgetary Diagram

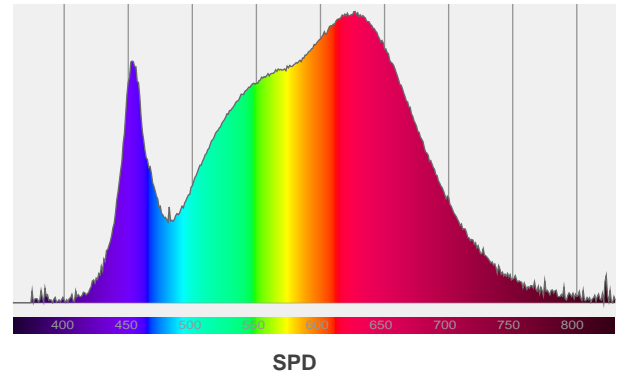
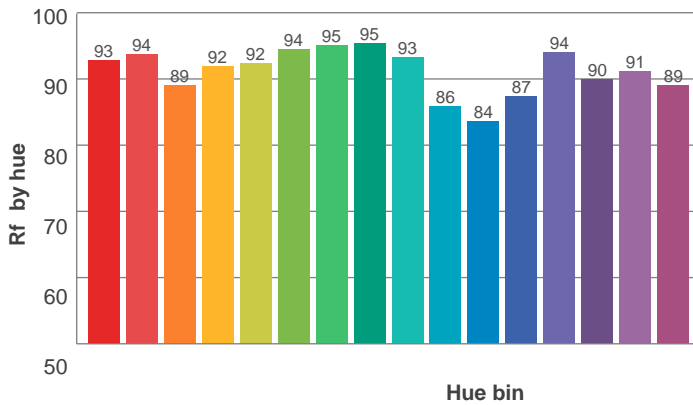
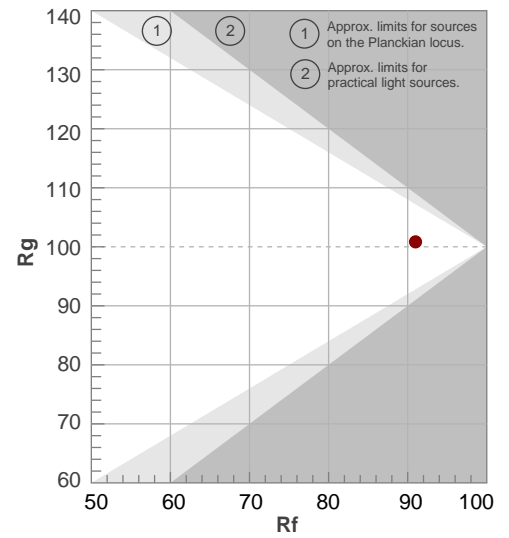


ANSI/IES TM-30-18

P: 2 / V: - / F: 2



Hue Bin	R <sub>f</sub>	Shifts (%)	
		Chroma	Hue
1	93	-3%	0%
2	94	-3%	2%
3	89	-1%	5%
4	92	0%	4%
5	92	0%	3%
6	94	3%	0%
7	95	-1%	-1%
8	95	-2%	0%
9	93	-3%	3%
10	86	-3%	9%
11	84	2%	11%
12	87	5%	5%
13	94	4%	0%
14	90	7%	-4%
15	91	2%	-5%
16	89	0%	-7%



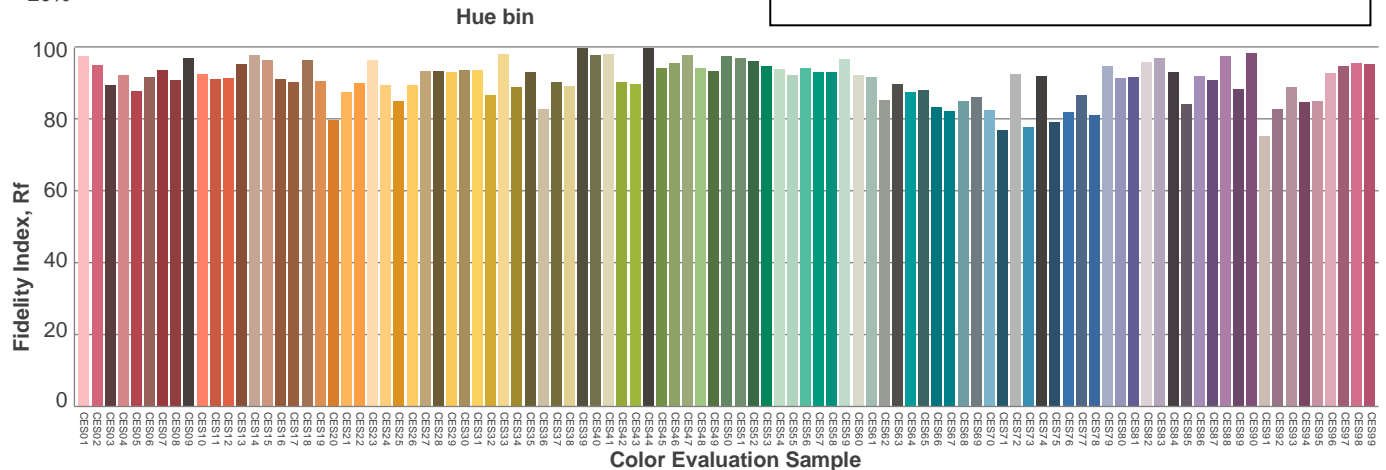
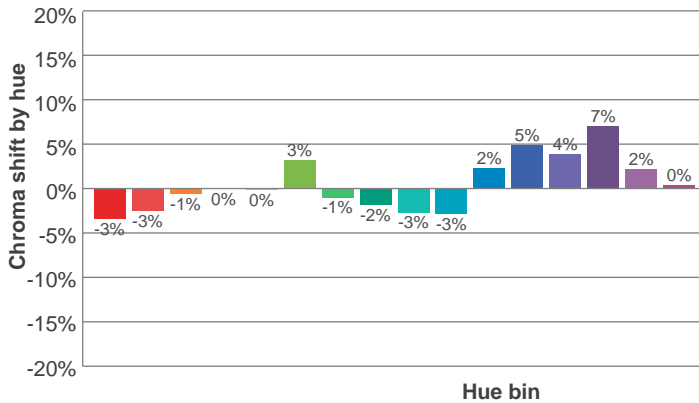
Red: 35.8%, Power=22.7mW

Blue: 11%, Power=16.4mW

Green: 25.2%, Power=29.4mW

UVA: 0.2%, Power=1.7mW

Dominant Wavelength: 584nm

1<sup>st</sup> Peak Wavelength: 627nm2<sup>nd</sup> Peak Wavelength: 453nm

**Glare Evaluation According to UGR**

p Ceiling		70	70	50	50	30	70	70	50	50	30
p Walls		50	30	50	30	30	50	30	50	30	30
p Floor		20	20	20	20	20	20	20	20	20	20
Room size X      Y		Viewing direction at right angles to lamp axis					Viewing direction parallel to lamp axis				
2H	2H	20.4	21.0	20.5	21.2	21.4	20.4	21.0	20.5	21.2	21.4
	3H	20.2	21.0	20.6	21.2	21.4	20.2	21.0	20.6	21.2	21.4
	4H	20.3	21.0	20.7	21.2	21.5	20.3	21.0	20.7	21.2	21.5
	6H	20.4	21.0	20.7	21.3	21.7	20.4	21.0	20.7	21.3	21.7
	8H	20.4	21.0	20.8	21.3	21.7	20.4	21.0	20.8	21.3	21.7
	12H	20.5	21.0	20.8	21.4	21.8	20.5	21.0	20.8	21.4	21.8
4H	2H	20.1	20.8	20.5	21.0	21.3	20.1	20.8	20.5	21.0	21.3
	3H	20.2	20.8	20.6	21.1	21.6	20.2	20.8	20.6	21.1	21.6
	4H	20.3	20.8	20.7	21.2	21.7	20.3	20.8	20.7	21.2	21.7
	6H	20.4	20.9	20.9	21.3	21.7	20.4	20.9	20.9	21.3	21.7
	8H	20.5	21.0	21.0	21.3	21.7	20.5	21.0	21.0	21.3	21.7
	12H	20.5	20.9	21.1	21.4	21.8	20.5	20.9	21.1	21.4	21.8
8H	4H	20.2	20.7	20.8	21.1	21.5	20.2	20.7	20.8	21.1	21.5
	6H	20.5	20.8	21.0	21.3	21.8	20.5	20.8	21.0	21.3	21.8
	8H	20.7	20.9	21.2	21.5	22.1	20.7	20.9	21.2	21.5	22.1
	12H	20.8	21.0	21.4	21.6	22.2	20.8	21.0	21.4	21.6	22.2
12H	4H	20.2	20.6	20.7	21.0	21.5	20.2	20.6	20.7	21.0	21.5
	6H	20.5	20.8	21.0	21.3	22.0	20.5	20.8	21.0	21.3	22.0
	8H	20.7	20.9	21.3	21.4	22.0	20.7	20.9	21.3	21.4	22.0
Variation of the observer position for the luminaire distance S											
S = 1.0H		3.7 / -2.8					3.7 / -2.8				
S = 1.5H		6.1 / -3.1					6.1 / -3.1				
S = 2.0H		8.0 / -3.5					8.0 / -3.5				
Standard table		n/a					n/a				
Correction summand		n/a					n/a				
Corrected glare indices referring to 2244 lm total luminous flux											