

Light efficiency:

75 Lumen/Watt

Color temperature:

3105 K

Light quality:

CRI:92.7, R_g:89.9, R_f:99.3

P: 2 / V: - / F: 3

Output: 4410 lm

Peak: 13907 cd

Power: 58.8 W

Voltage: 120 V

Current: 0.490 A

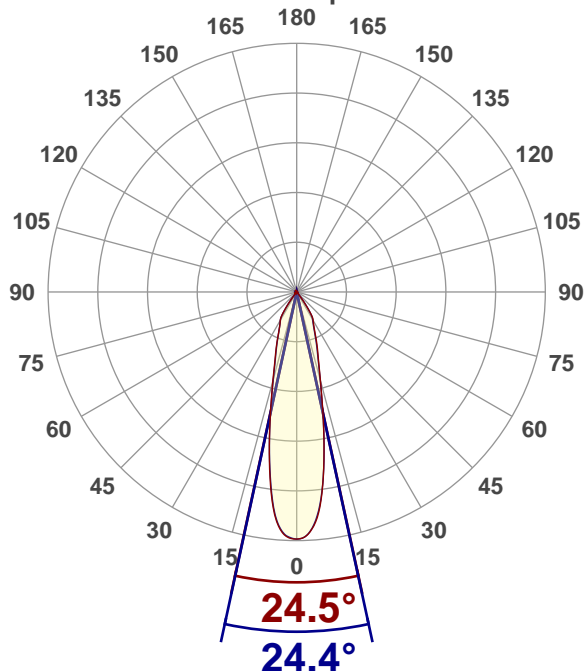
PF: 0.9

THD: n/a %



Angular Distribution

0° and 90° plane



Product name:

S5RGWS-I30SC-xx1-xxx

Test Date:

2020-05-22

Beam Angle (50% of the brightness of the centre):

24.5°

Field Angle (10% of the brightness of the centre):

66°

Cut Off Angle (2.5% of the brightness of the centre):

74.5°

Beam Details

*measured at centre of beam

Mounting Height (feet)/(meter)	Lux*	Footcandles*	Beam width (feet) / (meter)
4 ft / 1.2 m	9349 lx	869 fc	1.7 ft / 0.5 m
8 ft / 2.4 m	2337 lx	217 fc	3.5 ft / 1.1 m
12 ft / 3.7 m	1039 lx	97 fc	5.2 ft / 1.6 m
16 ft / 4.9 m	584 lx	54 fc	6.9 ft / 2.1 m
20 ft / 6.1 m	374 lx	35 fc	8.7 ft / 2.6 m

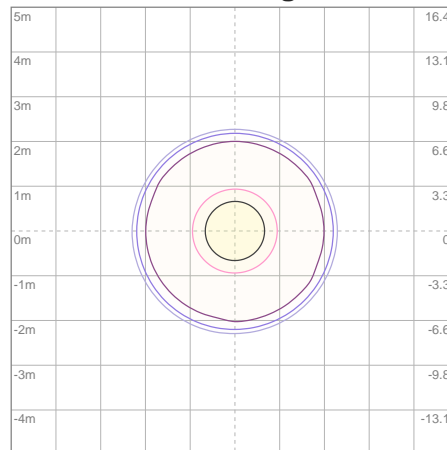
Beam center

Photometric Testing Report

Zonal Lumen Summary

Zone	Lumen	%Luminaire
0-30	3661	83.02%
0-40	4202	95.28%
0-60	4319	97.94%
60-90	62.5	1.42%
70-100	29.4	0.67%
90-120	9.34	0.21%
0-90	4381	99.34%
90-180	28.9	0.66%
0-180	4410	100.00%

ISO Lux Diagram



Mounting height: 3.05 meters (10 feet)

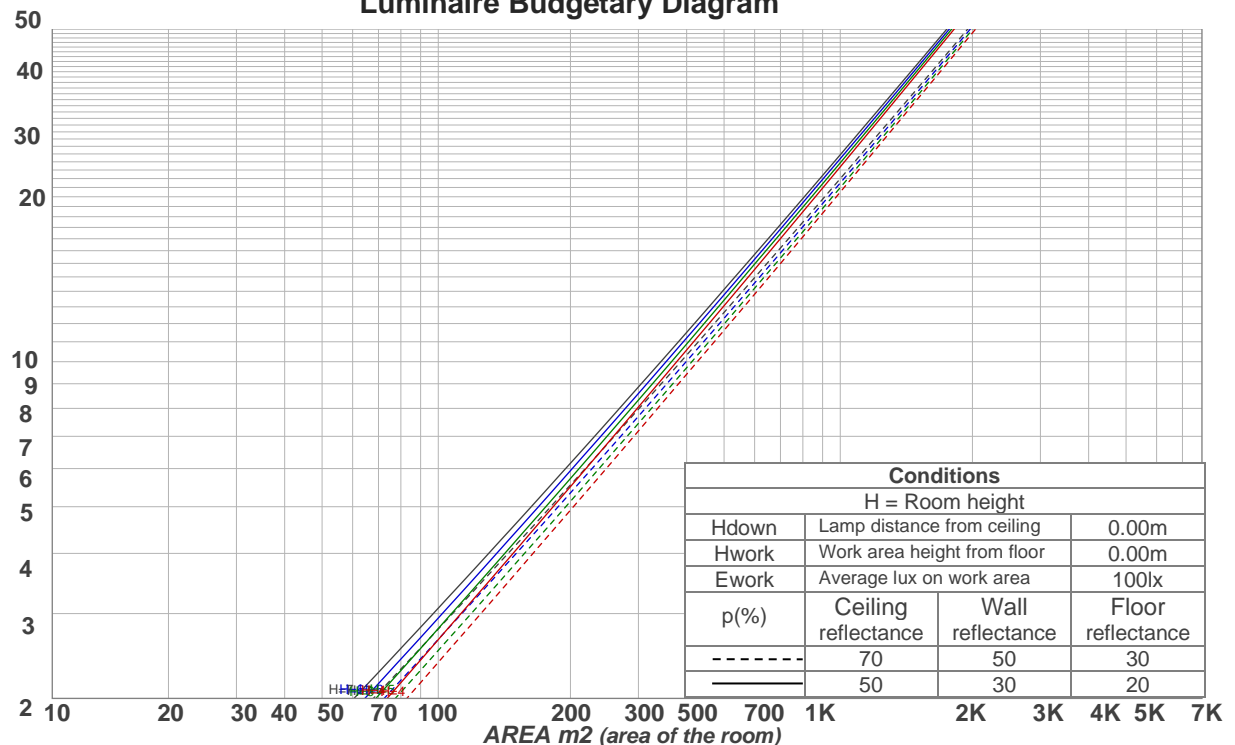
Lux at center:	1494 lx
3%	44.82 lx
5%	74.70 lx
10%	149.40 lx
30%	448.20 lx
50%	747.00 lx
Conditions: Number of planes: 8 Lux distribution on a surface when lamp is mounted at 3.05 meters from the surface.	

Coefficients of Utilization

Ceiling reflectance	80				70				50			30			10			0
Wall reflectance	70	50	30	10	70	50	30	10	50	30	10	50	30	10	50	30	10	0
Floor reflectance	20	20	20	20	20	20	20	20	20	20	20	20	20	20	20	20	20	0
RCR	(RCR: Room Cavity Ratio)				Room Values are expressed as percentage of Lumens delivered to the task surface													
0	119	119	119	119	116	116	116	116	111	111	111	106	106	106	101	101	101	99
1	114	111	109	107	111	109	107	105	105	104	102	101	100	99	98	97	96	94
2	109	105	101	98	107	103	100	97	100	97	95	97	95	93	94	92	91	89
3	105	99	95	91	103	98	94	91	95	92	89	93	90	88	90	88	86	85
4	100	94	89	86	99	93	88	85	91	87	84	89	86	83	87	84	82	81
5	97	89	84	81	95	88	84	80	87	83	80	85	82	79	83	80	78	77
6	93	85	80	77	91	84	80	76	83	79	76	82	78	75	80	77	75	73
7	89	81	76	73	88	81	76	73	80	75	72	78	75	72	77	74	71	70
8	86	78	73	70	85	77	73	69	76	72	69	75	72	69	74	71	68	67
9	83	75	70	67	82	74	70	66	74	69	66	73	69	66	72	68	66	65
10	80	72	67	64	79	72	67	64	71	67	64	70	66	63	69	66	63	62

LAMPS (number of lamps)

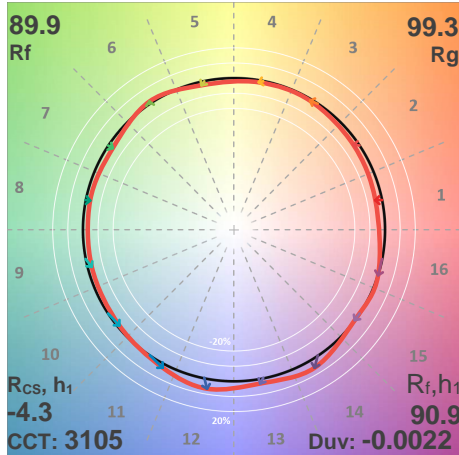
Luminaire Budgetary Diagram



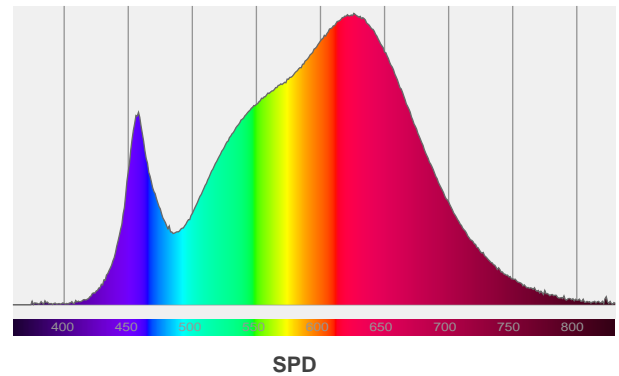
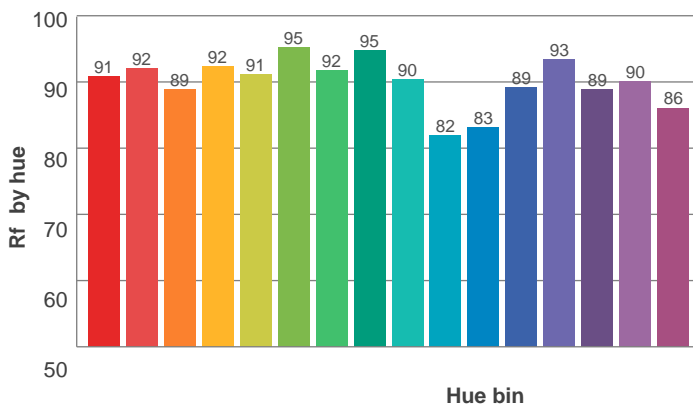
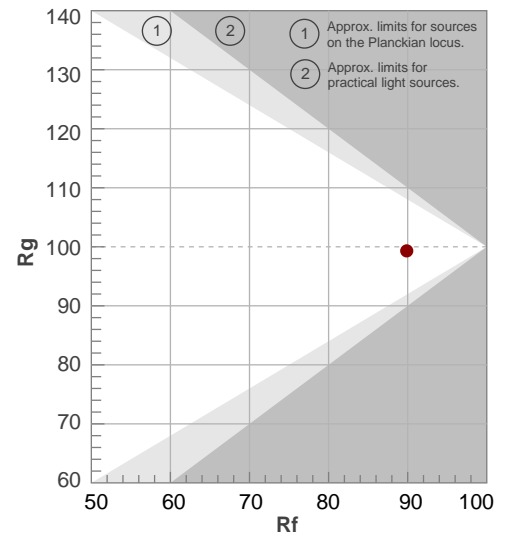
Photometric Testing Report

ANSI/IES TM-30-18

P: 2 / V: - / F: 3



Hue Bin	R _f	Shifts (%)	
		Chroma	Hue
1	91	-4%	1%
2	92	-3%	3%
3	89	-1%	5%
4	92	-1%	3%
5	91	-2%	2%
6	95	1%	-1%
7	92	-4%	0%
8	95	-3%	0%
9	90	-3%	6%
10	82	-2%	11%
11	83	2%	12%
12	89	7%	3%
13	93	3%	-3%
14	89	6%	-6%
15	90	0%	-5%
16	86	0%	-11%



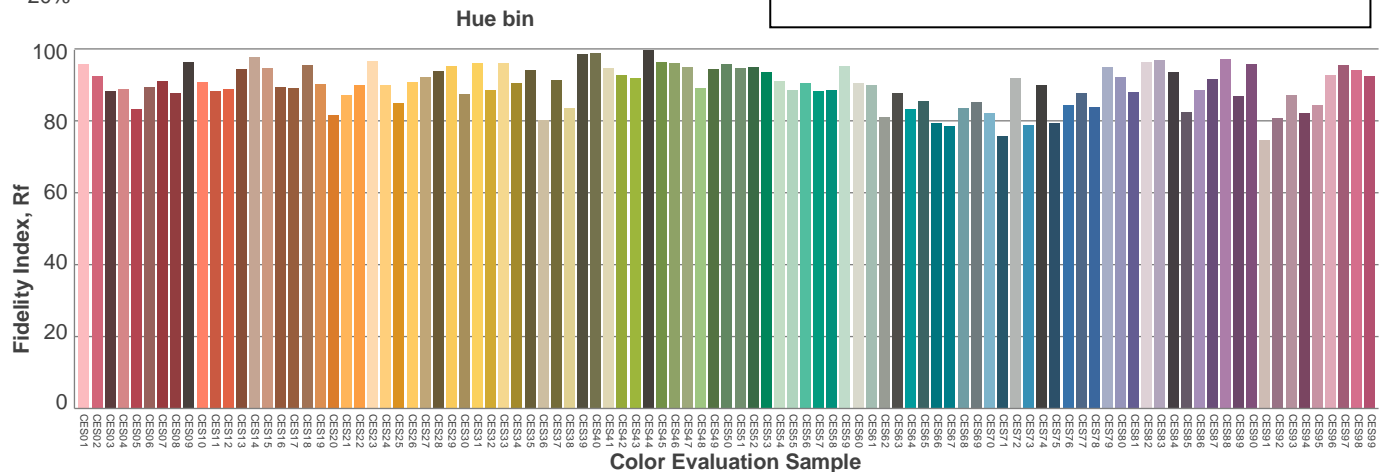
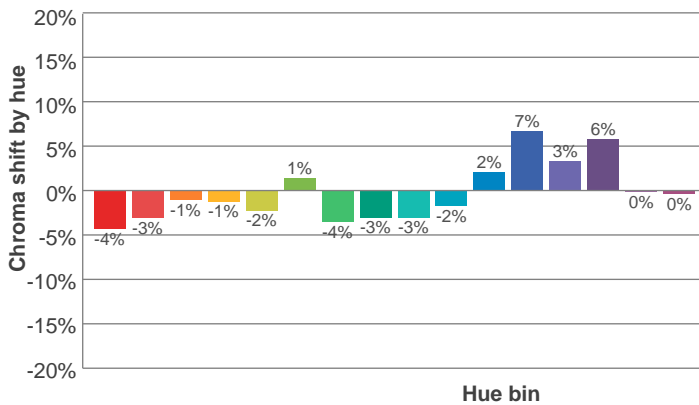
Red: 38.4%, Power=47.3mW

Blue: 10.2%, Power=33.6mW

Green: 23.8%, Power=55.4mW

UVA: 0.1%, Power=1.0mW

Dominant Wavelength: 584nm

1st Peak Wavelength: 626nm2nd Peak Wavelength: 458nm

Liteline Corporation – Richmond Hill, Canada – www.liteline.com Liteline Web -Downlights R1.6