

Light efficiency:

68 Lumen/Watt

Color temperature:

3005 K

Light quality:

CRI:93.4, R_g:90.8, R_f:100.2

P: 2 / V: - / F: 2

Output: 2203 lm

Peak: 5056 cd

Power: 32.3 W

Voltage: 120 V

Current: 0.269 A

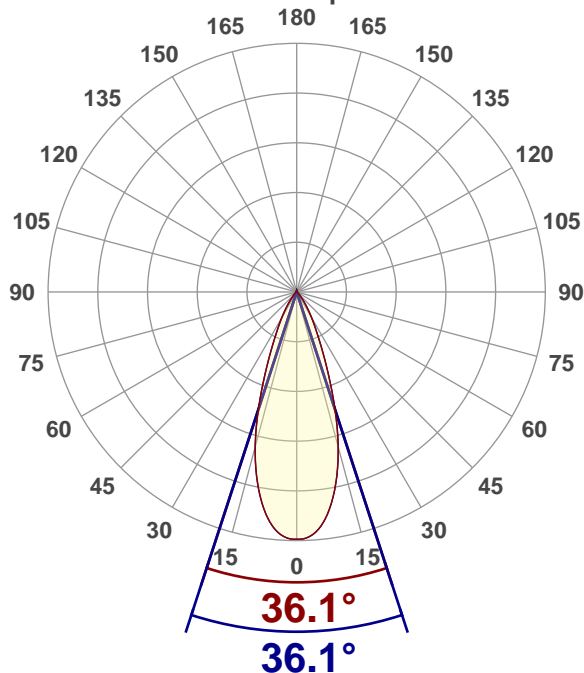
PF: 0.9

THD: n/a %



Angular Distribution

0° and 90° plane



Product name:

S4RGWS-D30MC-xx1-xxx

Test Date:

2020-05-26

Beam Angle (50% of the brightness of the centre):

36.1°

Field Angle (10% of the brightness of the centre):

63.2°

Cut Off Angle (2.5% of the brightness of the centre):

81.1°

Beam Details

*measured at centre of beam

Mounting Height (feet)/(meter)	Lux*	Footcandles*	Beam width (feet) / (meter)
4 ft / 1.2 m	3401 lx	316 fc	2.6 ft / 0.8 m
8 ft / 2.4 m	850 lx	79 fc	5.2 ft / 1.6 m
12 ft / 3.7 m	378 lx	35 fc	7.8 ft / 2.4 m
16 ft / 4.9 m	213 lx	20 fc	10.4 ft / 3.2 m
20 ft / 6.1 m	136 lx	13 fc	13 ft / 4 m

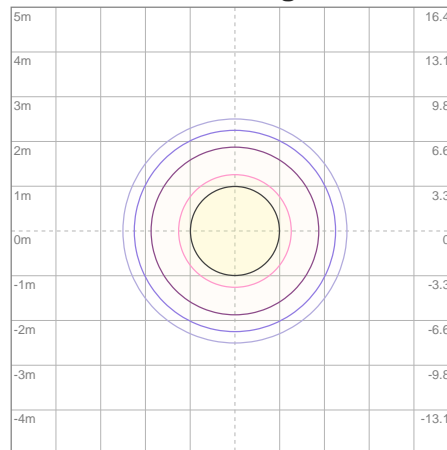
Beam center

Photometric Testing Report

Zonal Lumen Summary

Zone	Lumen	%Luminaire
0-30	1855	84.20%
0-40	2059	93.46%
0-60	2148	97.50%
60-90	26.8	1.22%
70-100	16.6	0.75%
90-120	10.6	0.48%
0-90	2175	98.73%
90-180	27.6	1.25%
0-180	2203	100.00%

ISO Lux Diagram



Mounting height: 3.05 meters (10 feet)

Lux at center:	543 lx
3%	16.29 lx
5%	27.15 lx
10%	54.30 lx
30%	162.90 lx
50%	271.50 lx

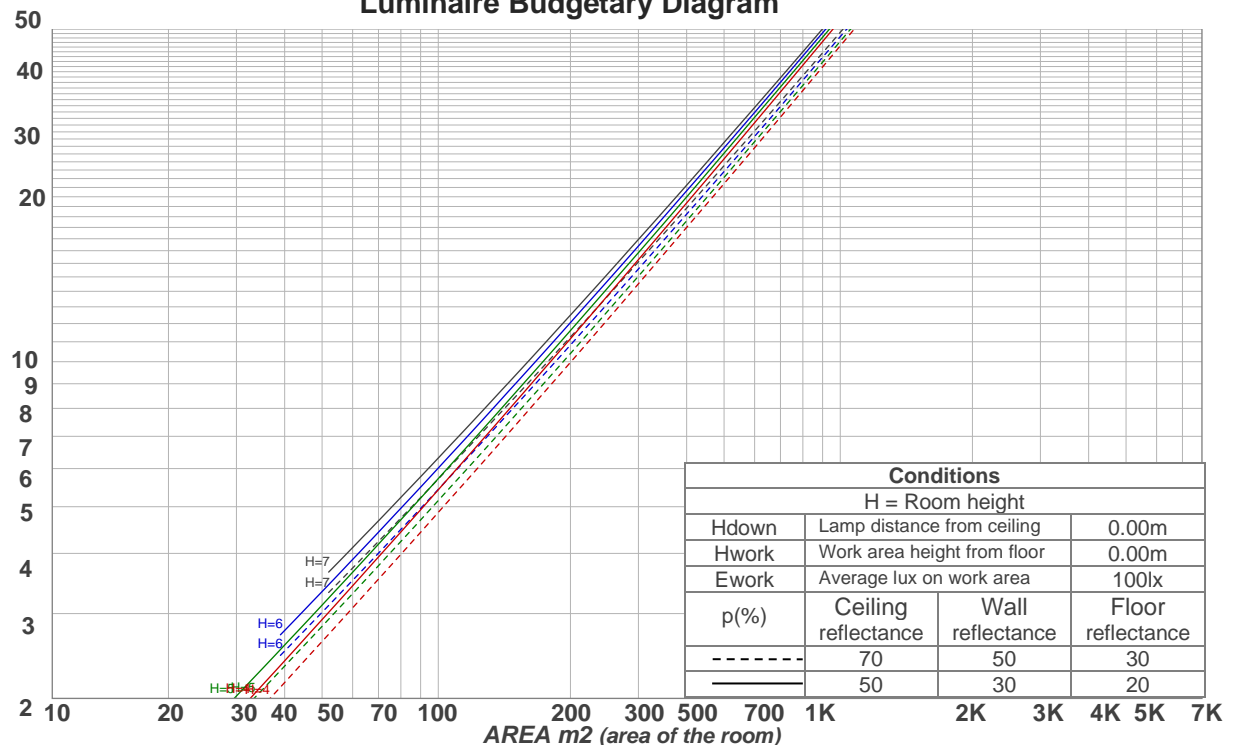
Conditions:
Number of planes: 8
Lux distribution on a surface when lamp is mounted at 3.05 meters from the surface.

Coefficients of Utilization

Ceiling reflectance	80				70				50			30			10			0
Wall reflectance	70	50	30	10	70	50	30	10	50	30	10	50	30	10	50	30	10	0
Floor reflectance	20	20	20	20	20	20	20	20	20	20	20	20	20	20	20	20	20	0
RCR	(RCR: Room Cavity Ratio) Room Values are expressed as percentage of Lumens delivered to the task surface																	
0	119	119	119	119	116	116	116	116	110	110	110	105	105	105	101	101	101	99
1	114	111	109	107	111	109	107	105	105	103	102	101	100	98	97	96	95	94
2	109	105	101	98	107	103	100	97	99	97	94	96	94	92	93	92	90	89
3	104	99	94	91	102	97	93	90	95	91	89	92	89	87	90	87	86	84
4	100	94	89	85	98	92	88	85	90	86	83	88	85	82	86	83	81	80
5	96	89	84	80	95	88	83	80	86	82	79	84	81	78	83	80	77	76
6	92	85	80	76	91	84	79	76	82	78	75	81	77	74	80	76	74	73
7	89	81	76	72	88	80	75	72	79	75	71	78	74	71	77	73	71	69
8	85	77	72	69	84	77	72	69	76	71	68	75	71	68	74	70	68	66
9	82	74	69	66	81	74	69	66	73	68	65	72	68	65	71	67	65	64
10	79	71	66	63	79	71	66	63	70	66	63	69	65	62	68	65	62	61

LAMPS (number of lamps)

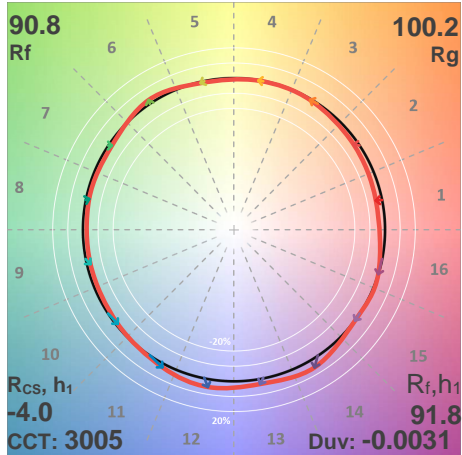
Luminaire Budgetary Diagram



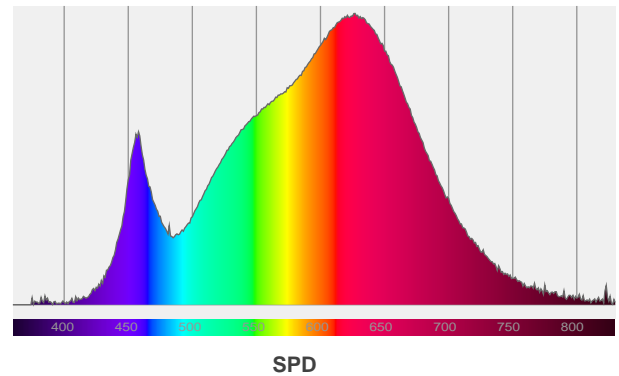
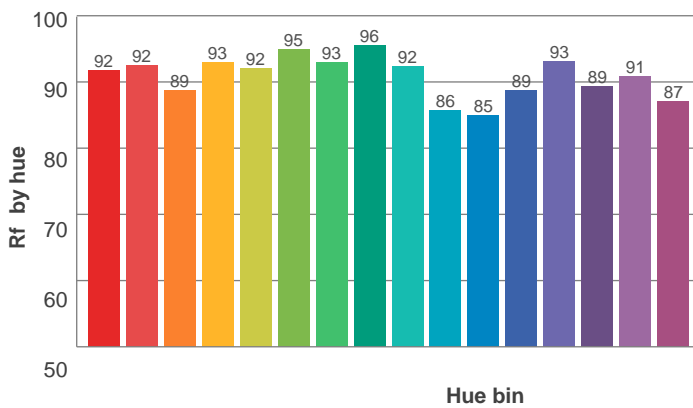
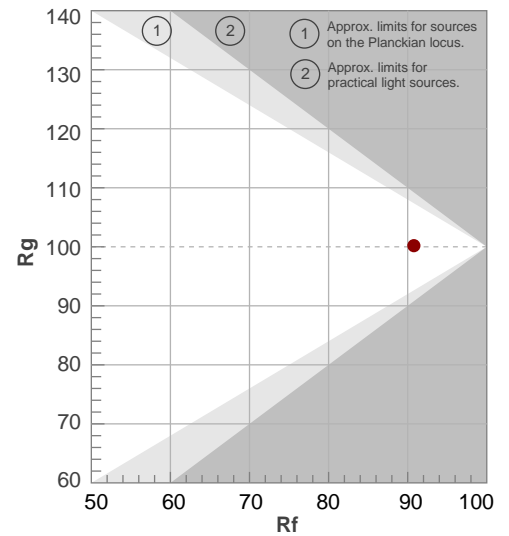
Photometric Testing Report

ANSI/IES TM-30-18

P: 2 / V: - / F: 2



Hue Bin	R _f	Shifts (%)	
		Chroma	Hue
1	92	-4%	0%
2	92	-3%	3%
3	89	-1%	6%
4	93	0%	3%
5	92	-1%	3%
6	95	3%	-1%
7	93	-2%	-1%
8	96	-2%	-1%
9	92	-3%	4%
10	86	-1%	9%
11	85	2%	11%
12	89	6%	4%
13	93	4%	-3%
14	89	6%	-6%
15	91	0%	-5%
16	87	0%	-10%



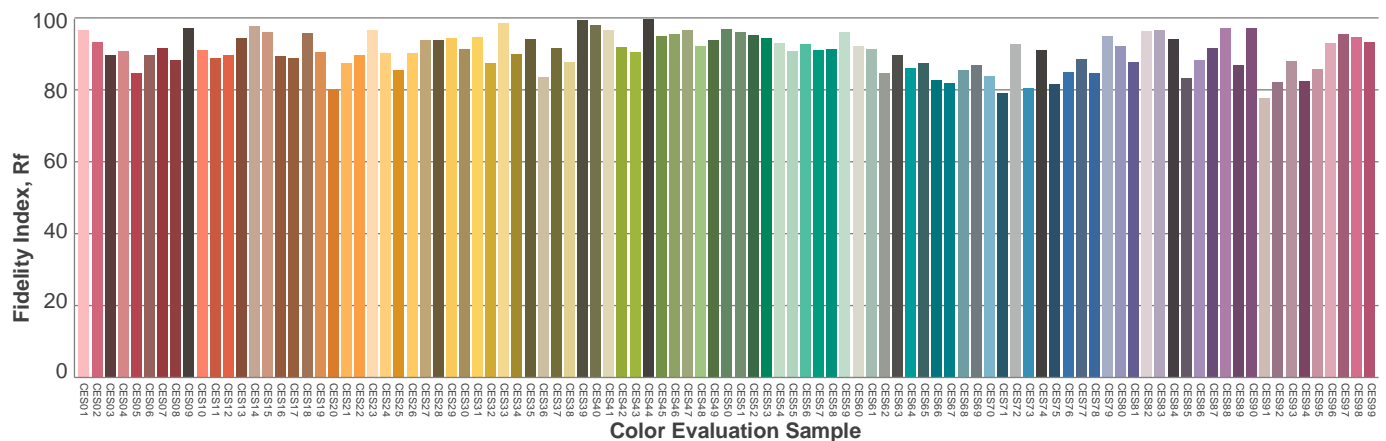
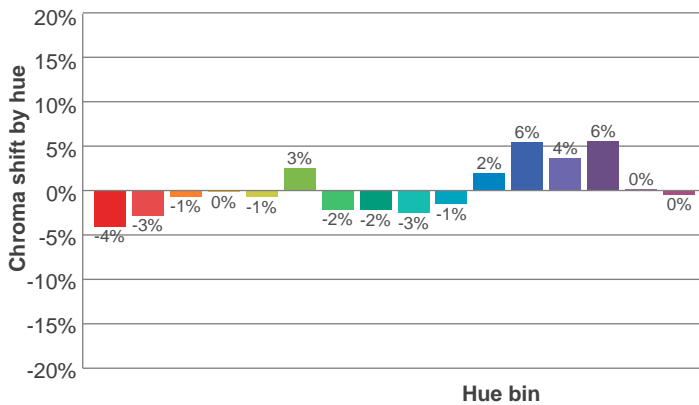
Red: 39.4%, Power=24.9mW

Blue: 9.5%, Power=15.7mW

Green: 23%, Power=27.0mW

UVA: 0.2%, Power=1.1mW

Dominant Wavelength: 585nm

1st Peak Wavelength: 627nm2nd Peak Wavelength: 458nm

Glare Evaluation According to UGR

p Ceiling		70	70	50	50	30	70	70	50	50	30
p Walls		50	30	50	30	30	50	30	50	30	30
p Floor		20	20	20	20	20	20	20	20	20	20
Room size X Y		Viewing direction at right angles to lamp axis					Viewing direction parallel to lamp axis				
2H	2H	15.8	16.3	15.9	16.6	16.8	15.8	16.3	15.9	16.6	16.8
	3H	15.8	16.4	16.2	16.7	16.9	15.8	16.4	16.2	16.7	16.9
	4H	15.9	16.5	16.3	16.7	17.0	15.9	16.5	16.3	16.7	17.0
	6H	16.0	16.5	16.3	16.9	17.2	16.0	16.5	16.3	16.9	17.2
	8H	16.0	16.6	16.4	16.9	17.3	16.0	16.6	16.4	16.9	17.3
	12H	16.1	16.6	16.5	17.0	17.4	16.1	16.6	16.5	17.0	17.4
4H	2H	15.6	16.2	16.0	16.5	16.7	15.6	16.2	16.0	16.5	16.7
	3H	15.8	16.3	16.2	16.7	17.1	15.8	16.3	16.2	16.7	17.1
	4H	15.9	16.4	16.4	16.8	17.4	15.9	16.4	16.4	16.8	17.4
	6H	16.1	16.6	16.6	17.0	17.3	16.1	16.6	16.6	17.0	17.3
	8H	16.2	16.6	16.7	17.0	17.4	16.2	16.6	16.7	17.0	17.4
	12H	16.3	16.6	16.8	17.1	17.5	16.3	16.6	16.8	17.1	17.5
8H	4H	15.9	16.4	16.5	16.8	17.1	15.9	16.4	16.5	16.8	17.1
	6H	16.2	16.5	16.7	17.0	17.5	16.2	16.5	16.7	17.0	17.5
	8H	16.4	16.6	16.9	17.2	17.8	16.4	16.6	16.9	17.2	17.8
	12H	16.6	16.8	17.2	17.3	17.9	16.6	16.8	17.2	17.3	17.9
12H	4H	15.9	16.2	16.4	16.7	17.1	15.9	16.2	16.4	16.7	17.1
	6H	16.3	16.5	16.8	17.0	17.7	16.3	16.5	16.8	17.0	17.7
	8H	16.4	16.6	17.0	17.2	17.8	16.4	16.6	17.0	17.2	17.8
Variation of the observer position for the luminaire distance S											
S = 1.0H		3.4 / -2.1					3.4 / -2.1				
S = 1.5H		5.7 / -2.5					5.7 / -2.5				
S = 2.0H		7.5 / -2.8					7.5 / -2.8				
Standard table		n/a					n/a				
Correction summand		n/a					n/a				
Corrected glare indices referring to 2203 lm total luminous flux											