

Light efficiency:

61 Lumen/Watt

Light quality:

CRI: 94.5

Color temperature:

5427 K

Output: 689 lm

Peak: 243 cd

Power: 11.3 W

Voltage: 119 V

Current: 0.097 A

PF: 0.98

THD: 8.1 %



Product name:

SLM4-12W-CCT-WHBK - 4000K

Driver Used:

Test Date:

2020-02-13

Beam Angle:

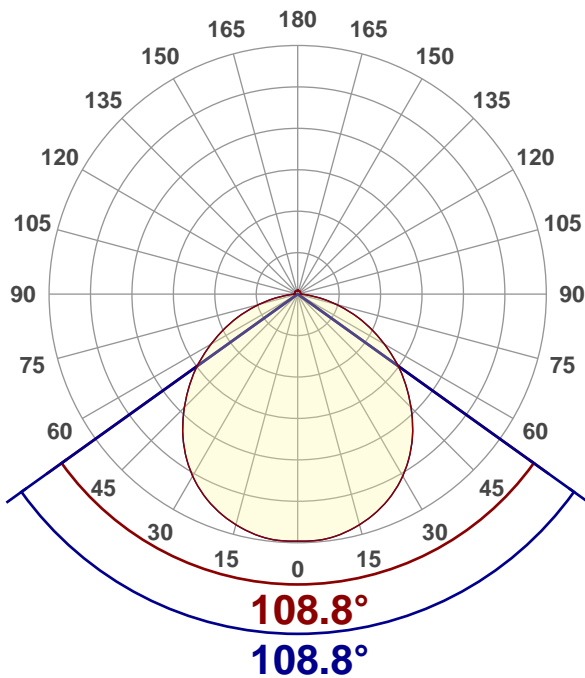
108.8°

Field Angle:

158.8°

Cut Off Angle:

174.6°



Beam details

*measured at center of beam

Mounting Height (feet)\(meter)	Lux*	Footcandles*	Beam width (feet) / (meter)
4 ft / 1.2 m	164 lx	15 fcd	11.2 ft / 3.4 m
8 ft / 2.4 m	41 lx	4 fcd	22.3 ft / 6.8 m
12 ft / 3.7 m	18 lx	2 fcd	33.5 ft / 10.2 m
16 ft / 4.9m	10 lx	1 fcd	44.7 ft / 13.6 m
20 ft / 6.1m	7 lx	1 fcd	55.9 ft / 17 m

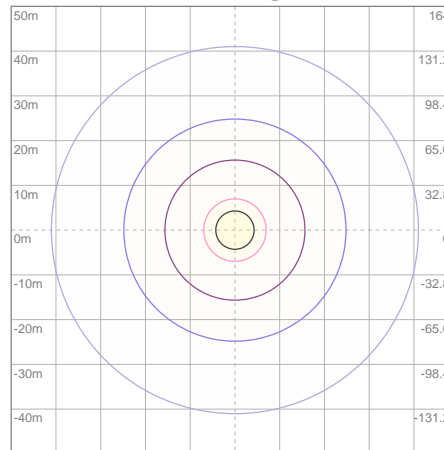
Beam center

Light planning Photometric Testing Report

Zonal Lumen Summary

Zone	Lumen	%Luminaire
0-30	190	27.58%
0-40	310	44.99%
0-60	538	78.08%
60-90	131	19.01%
70-100	56.7	8.23%
90-120	9.72	1.41%
0-90	669	97.10%
90-180	20.5	2.98%
0-180	689	100.00%

ISO lux diagram



Mounting height: 3.05 meters (10 feet)

Lux at center:	26 lx
3%	0.78 lx
5%	1.30 lx
10%	2.60 lx
30%	7.80 lx
50%	13.00 lx

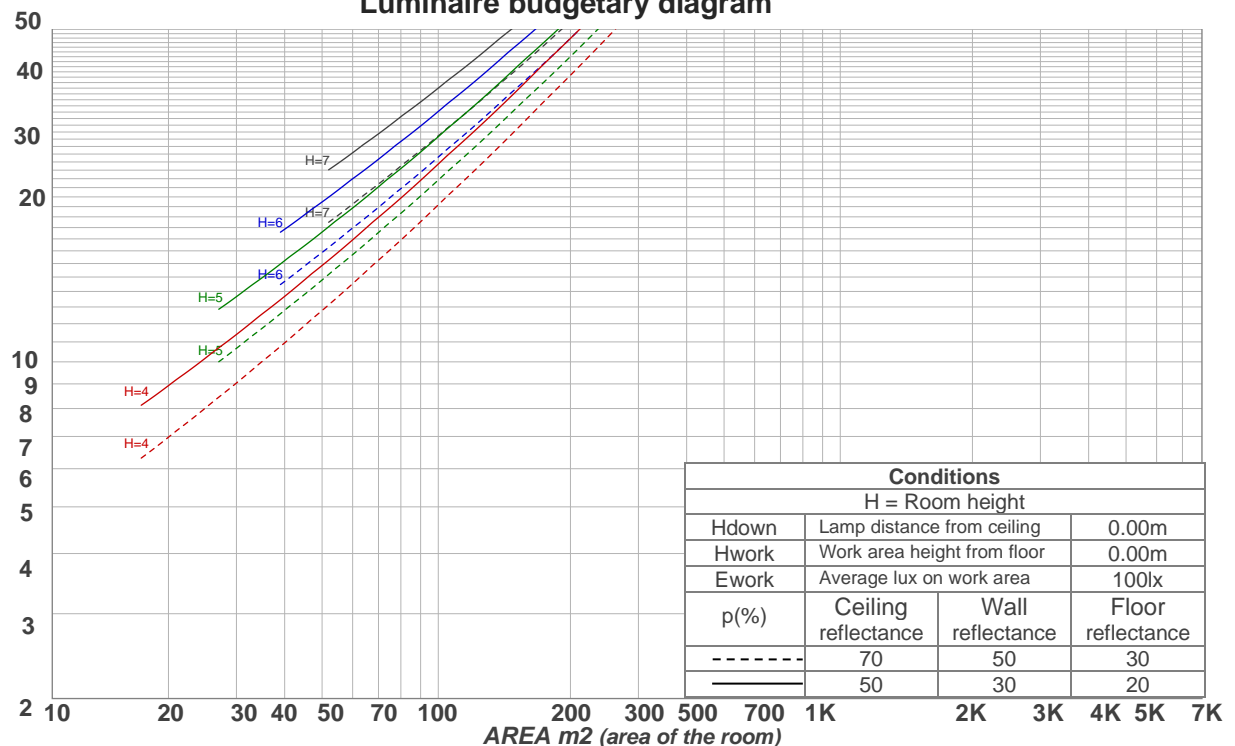
Conditions:
Number of planes: 8
Lux distribution on a surface when lamp is mounted at 3.05 meters from the surface.

Coefficients of Utilization

Ceiling reflectance	80				70				50			30			10			0
Wall reflectance	70	50	30	10	70	50	30	10	50	30	10	50	30	10	50	30	10	0
Floor reflectance	20	20	20	20	20	20	20	20	20	20	20	20	20	20	20	20	20	0
RCR	(RCR: Room Cavity Ratio) Room Values are expressed as percentage of Lumens delivered to the task surface																	
0	118	118	118	118	115	115	115	115	109	109	109	104	104	104	99	99	99	97
1	108	104	99	96	105	101	97	94	96	93	90	92	89	87	88	86	84	82
2	99	91	84	78	96	88	82	77	84	79	75	81	76	73	77	74	71	68
3	90	80	72	65	87	78	70	64	74	68	63	71	66	62	68	64	60	58
4	82	71	62	55	80	69	61	55	66	59	54	64	58	53	61	56	52	49
5	76	63	54	48	74	62	54	47	59	52	47	57	51	46	55	50	45	43
6	70	57	48	42	68	56	47	41	54	46	41	52	45	40	50	44	40	38
7	65	52	43	37	63	51	42	37	49	42	36	47	41	36	46	40	35	33
8	61	47	39	33	59	46	38	33	45	38	32	43	37	32	42	36	32	30
9	57	43	35	30	55	43	35	29	41	34	29	40	33	29	39	33	29	27
10	53	40	32	27	52	39	32	27	38	31	26	37	31	26	36	30	26	24

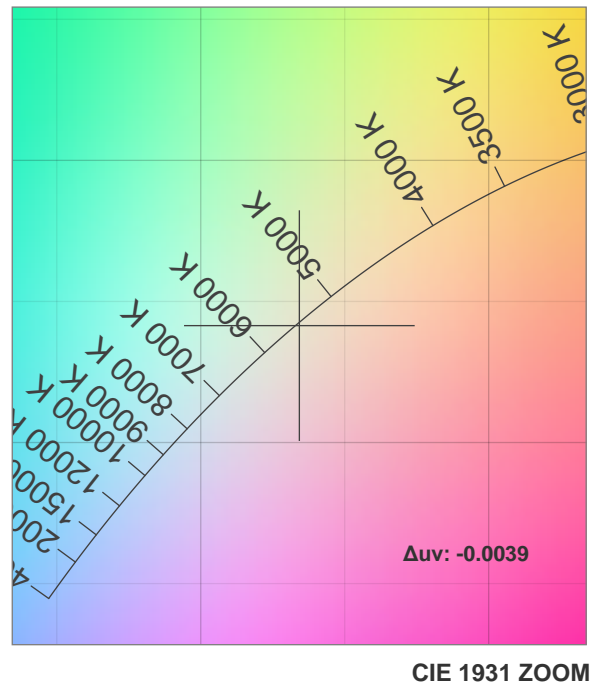
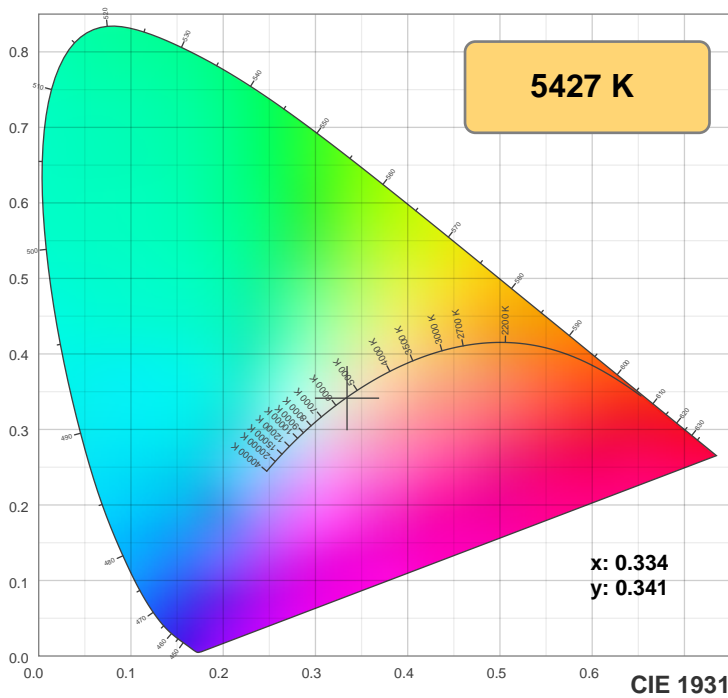
LAMPS (number of lamps)

Luminaire budgetary diagram

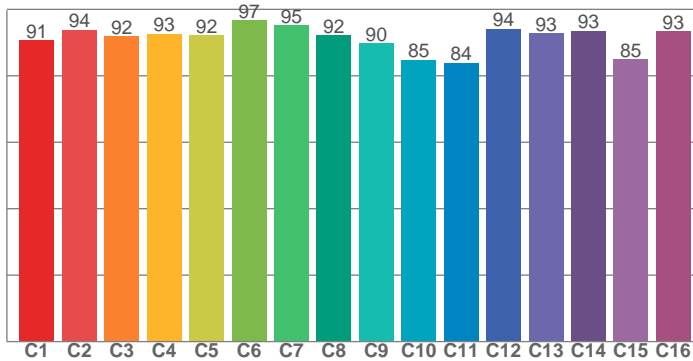


Color details

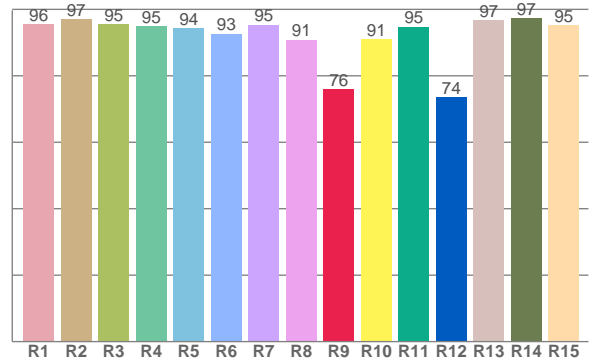
Photometric Testing Report



TM30: 91.2



CRI: 94.5 (R1-R8)



CRI R values, only R1-R8 are used to calculate final CRI value

R1	R2	R3	R4	R5	R6	R7	R8	R9	R10	R11	R12	R13	R14	R15
95.6	97.0	95.4	94.9	94.4	92.6	95.3	90.9	75.9	91.1	94.7	73.6	96.7	97.3	95.2

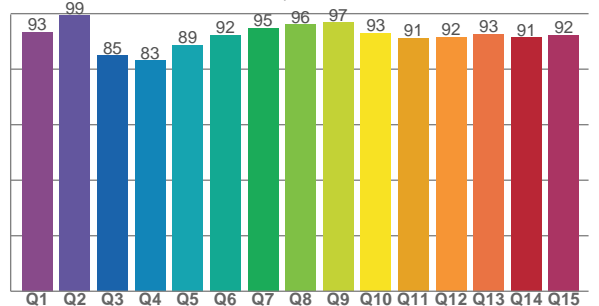
TM30 C values, 16 binned values out of total of 99 C values

C1	C2	C3	C4	C5	C6	C7	C8	C9	C10	C11	C12	C13	C14	C15	C16
90.6	93.9	91.8	92.7	92.2	96.6	95.1	92.1	89.8	84.8	83.9	94.1	92.8	93.5	84.9	93.4

CQS Q values

Q1	Q2	Q3	Q4	Q5	Q6	Q7	Q8	Q9	Q10	Q11	Q12	Q13	Q14	Q15
93.4	99.3	84.9	83.1	88.7	92.3	94.8	96.1	96.9	93.0	91.2	91.5	92.6	91.4	92.4

CQS: 91.1



Color parameters

Color temperature	Color rendering index	Red component	Color fidelity	Color gamut	Color quality scale	Color coordinate cie 1931	Color coordinate cie 1931	Color coordinate	Color coordinate	Color deviation from black body
CCT	CRI	CRI R9	TM30 Rf	TM30 Rg	CQS	x	y	u	v	Δuv
5427 K	94.5	75.9	91.2	99.3	91.1	0.334	0.341	0.208	0.319	-0.0039

UGR Photometric Testing Report

Glare Evaluation According to UGR

p Ceiling		70	70	50	50	30	70	70	50	50	30
p Walls		50	30	50	30	30	50	30	50	30	30
p Floor		20	20	20	20	20	20	20	20	20	20
Room size X Y		Viewing direction at right angles to lamp axis					Viewing direction parallel to lamp axis				
2H	2H	25.7	26.8	25.9	27.2	27.5	25.7	26.8	25.9	27.2	27.5
	3H	27.0	28.2	27.4	28.5	28.8	27.0	28.2	27.4	28.5	28.8
	4H	27.5	28.7	28.0	29.0	29.3	27.5	28.7	28.0	29.0	29.3
	6H	28.0	29.0	28.3	29.3	29.7	28.0	29.0	28.3	29.3	29.7
	8H	28.1	29.1	28.5	29.4	29.9	28.1	29.1	28.5	29.4	29.9
	12H	28.1	29.1	28.5	29.5	30.0	28.1	29.1	28.5	29.5	30.0
4H	2H	26.2	27.4	26.7	27.7	28.0	26.2	27.4	26.7	27.7	28.0
	3H	27.9	28.8	28.3	29.2	29.7	27.9	28.8	28.3	29.2	29.7
	4H	28.4	29.4	28.9	29.8	30.4	28.4	29.4	28.9	29.8	30.4
	6H	28.9	29.8	29.5	30.2	30.6	28.9	29.8	29.5	30.2	30.6
	8H	29.1	29.8	29.6	30.2	30.7	29.1	29.8	29.6	30.2	30.7
	12H	29.2	29.8	29.7	30.3	30.8	29.2	29.8	29.7	30.3	30.8
8H	4H	28.7	29.4	29.2	29.9	30.3	28.7	29.4	29.2	29.9	30.3
	6H	29.3	29.9	29.8	30.4	31.0	29.3	29.9	29.8	30.4	31.0
	8H	29.5	30.0	30.1	30.6	31.3	29.5	30.0	30.1	30.6	31.3
	12H	29.7	30.1	30.3	30.7	31.3	29.7	30.1	30.3	30.7	31.3
12H	4H	28.7	29.3	29.2	29.8	30.3	28.7	29.3	29.2	29.8	30.3
	6H	29.4	29.9	29.9	30.4	31.1	29.4	29.9	29.9	30.4	31.1
	8H	29.6	30.0	30.2	30.6	31.2	29.6	30.0	30.2	30.6	31.2
Variation of the observer position for the luminaire distance S											
S = 1.0H		0.1 / -0.1					0.1 / -0.1				
S = 1.5H		0.2 / -0.3					0.2 / -0.3				
S = 2.0H		0.5 / -0.6					0.5 / -0.6				
Standard table		n/a					n/a				
Correction summand		n/a					n/a				
Corrected glare indices referring to 689 lm total luminous flux											

Due to our continued efforts to improve our products, product specifications are subject to change without notice. Please refer to our website for the latest test results.