

Light efficiency:

31 Lumen/Watt

Light quality:

CRI: 93.3

Color temperature:

2987 K

Output: 68.5 lm

Peak: 72.6 cd

Power: 2.2 W

Voltage: 118 V

Current: 0.048 A

PF: 0.39

THD: 145.68 %



Product name:

WLFLR-1W30K-90-AL

Driver Used:

Test Date:

7/13/2018

Beam Angle:

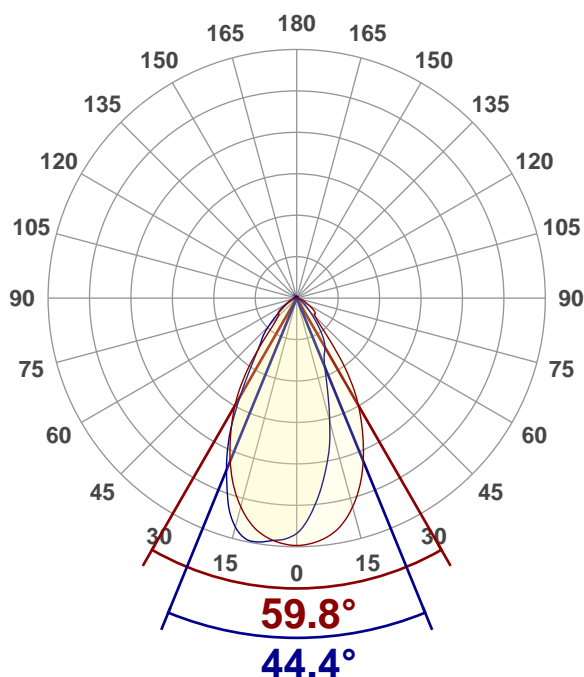
52.1°

Field Angle:

92.7°

Cut Off Angle:

132.8°



Beam details

*measured at center of beam

Mounting Height (feet)\(meter)	Lux*	Footcandles*	Beam width (feet) / (meter)
4 ft / 1.2 m	48 lx	4 fcd	3.9 ft / 1.2 m
8 ft / 2.4 m	12 lx	1 fcd	7.8 ft / 2.4 m
12 ft / 3.7 m	5 lx	0 fcd	11.7 ft / 3.6 m
16 ft / 4.9 m	3 lx	0 fcd	15.6 ft / 4.8 m
20 ft / 6.1 m	2 lx	0 fcd	19.6 ft / 6 m

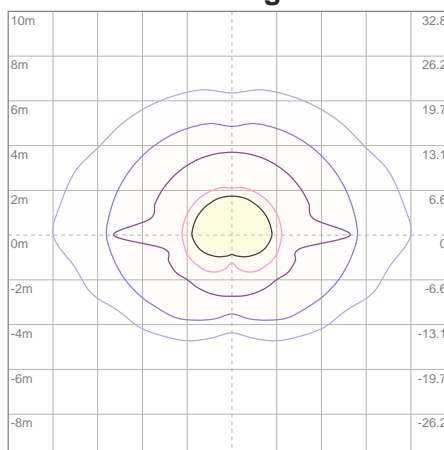
Beam center

Light planning Photometric Testing Report

Zonal Lumen Summary

Zone	Lumen	%Luminaire
0-30	40.8	59.56%
0-40	53.7	78.39%
0-60	64.4	94.01%
60-90	3.54	5.17%
70-100	1.52	2.22%
90-120	0.260	0.38%
0-90	68.0	99.27%
90-180	0.509	0.74%
0-180	68.5	100.00%

ISO lux diagram



Mounting height: 3.05 meters (10 feet)

Lux at center:	8 lx
3%	0.24 lx
5%	0.40 lx
10%	0.80 lx
30%	2.40 lx
50%	4.00 lx

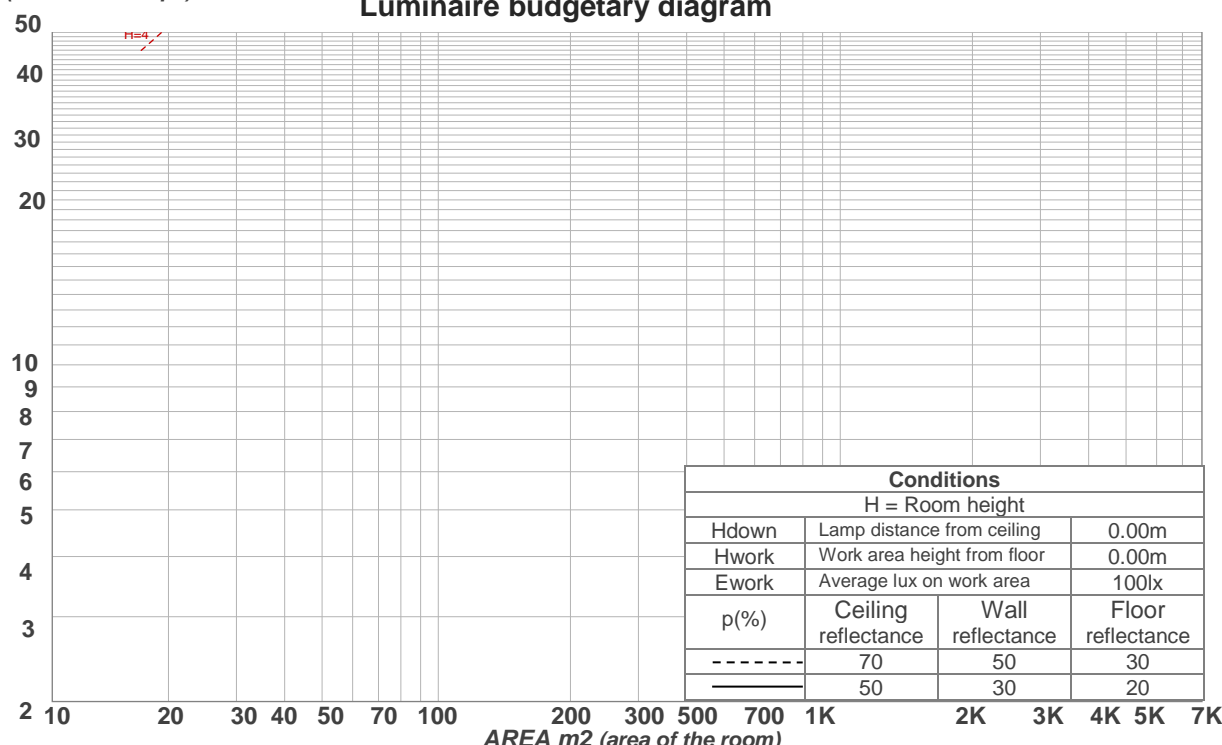
Conditions:
Number of planes: 2
Lux distribution on a surface when lamp is mounted at 3.05 meters from the surface.

Coefficients of Utilization

Ceiling reflectance	80				70				50			30			10			0
Wall reflectance	70	50	30	10	70	50	30	10	50	30	10	50	30	10	50	30	10	0
Floor reflectance	20	20	20	20	20	20	20	20	20	20	20	20	20	20	20	20	20	0
RCR	(RCR: Room Cavity Ratio) Room Values are expressed as percentage of Lumens delivered to the task surface																	
0	119	119	119	119	116	116	116	116	111	111	111	106	106	106	101	101	101	99
1	112	109	106	103	110	107	104	102	102	100	98	99	97	95	95	94	92	90
2	105	100	95	91	103	98	94	90	95	91	88	91	88	86	88	86	84	82
3	99	92	86	81	97	90	85	81	87	83	79	85	81	78	82	79	77	75
4	93	85	78	74	91	83	78	73	81	76	72	79	75	71	77	73	70	68
5	88	79	72	67	86	78	71	67	76	70	66	74	69	65	72	68	65	63
6	83	73	66	62	81	72	66	61	71	65	61	69	64	60	68	63	60	58
7	79	68	62	57	77	68	61	57	66	60	56	65	60	56	64	59	56	54
8	74	64	57	53	73	63	57	53	62	56	52	61	56	52	60	55	52	50
9	71	60	54	49	69	60	53	49	59	53	49	58	52	49	57	52	49	47
10	67	57	50	46	66	56	50	46	55	50	46	54	49	46	54	49	46	44

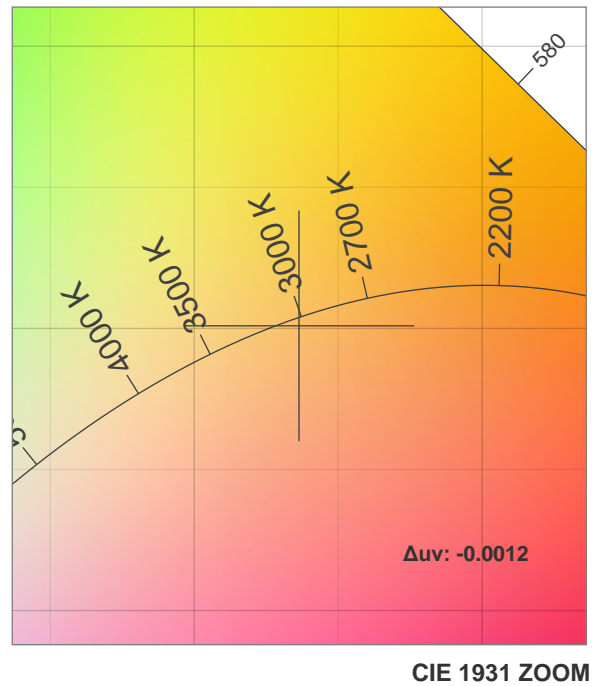
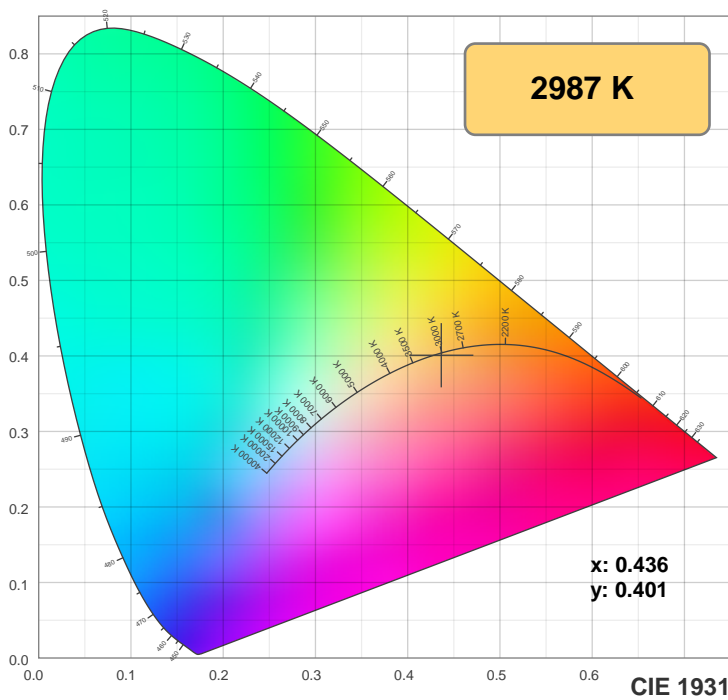
LAMPS (number of lamps)

Luminaire budgetary diagram

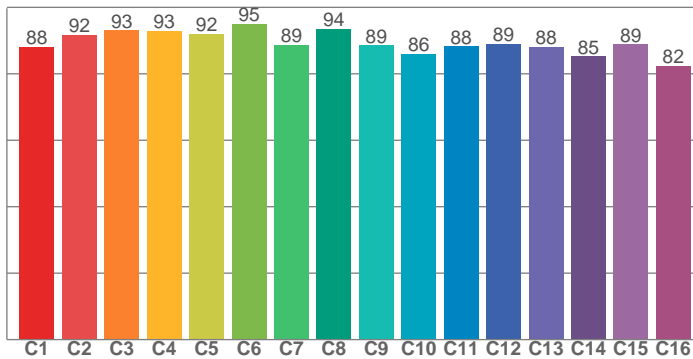


Color details

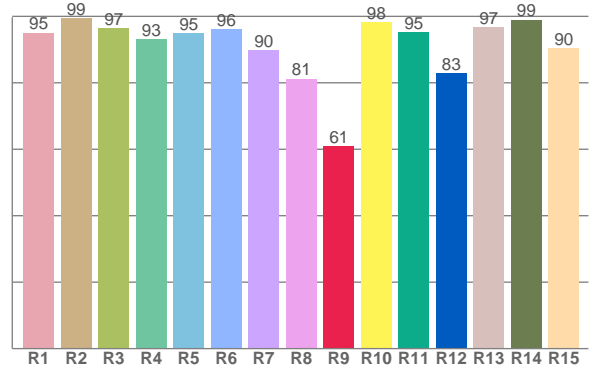
Photometric Testing Report



TM30: 89.6



CRI: 93.3 (R1-R8)



CRI R values, only R1-R8 are used to calculate final CRI value

R1	R2	R3	R4	R5	R6	R7	R8	R9	R10	R11	R12	R13	R14	R15
95.1	99.5	96.5	93.1	95.0	96.1	89.8	81.2	61.0	98.3	95.2	82.9	96.8	99.0	90.3

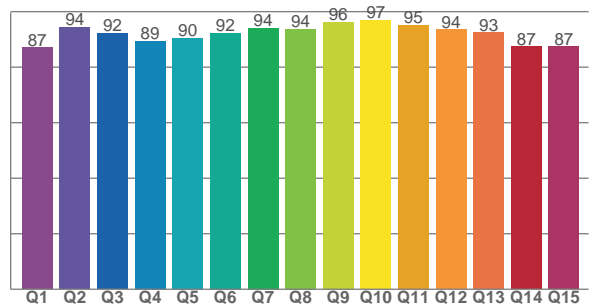
TM30 C values, 16 binned values out of total of 99 C values

C1	C2	C3	C4	C5	C6	C7	C8	C9	C10	C11	C12	C13	C14	C15	C16
88.2	91.8	93.1	92.9	92.1	95.0	88.7	93.6	88.5	86.0	88.2	89.0	88.1	85.3	88.8	82.5

CQS Q values

Q1	Q2	Q3	Q4	Q5	Q6	Q7	Q8	Q9	Q10	Q11	Q12	Q13	Q14	Q15
87.1	94.3	92.2	89.5	90.5	92.2	94.0	93.7	96.2	96.9	95.1	93.5	92.5	87.5	87.5

CQS: 91.5



Color parameters

Color temperature	Color rendering index	Red component	Color fidelity	Color gamut	Color quality scale	Color coordinate cie 1931	Color coordinate cie 1931	Color coordinate	Color coordinate	Color deviation from black body
CCT	CRI	CRI R9	TM30 Rf	TM30 Rg	CQS	x	y	u	v	Δuv
2987 K	93.3	61.0	89.6	96.9	91.5	0.436	0.401	0.252	0.347	-0.0012

UGR Photometric Testing Report

Glare Evaluation According to UGR

p Ceiling		70	70	50	50	30	70	70	50	50	30
p Walls		50	30	50	30	30	50	30	50	30	30
p Floor		20	20	20	20	20	20	20	20	20	20
Room size X Y		Viewing direction at right angles to lamp axis					Viewing direction parallel to lamp axis				
2H	2H	11.9	12.8	12.2	13.0	13.2	8.6	9.5	8.9	9.7	9.9
	3H	12.5	13.3	12.8	13.6	13.8	8.7	9.5	9.0	9.7	10.0
	4H	12.8	13.5	13.1	13.8	14.1	8.7	9.4	9.0	9.7	10.0
	6H	13.0	13.7	13.4	14.0	14.3	8.7	9.4	9.0	9.6	10.0
	8H	13.1	13.8	13.5	14.1	14.4	8.6	9.3	9.0	9.6	9.9
	12H	13.2	13.8	13.6	14.2	14.5	8.6	9.2	9.0	9.6	9.9
4H	2H	12.0	12.8	12.4	13.0	13.3	9.0	9.7	9.3	10.0	10.3
	3H	12.8	13.4	13.1	13.7	14.0	9.2	9.9	9.6	10.2	10.5
	4H	13.2	13.7	13.6	14.0	14.4	9.3	9.9	9.7	10.2	10.6
	6H	13.5	14.0	13.9	14.4	14.8	9.3	9.8	9.8	10.2	10.6
	8H	13.7	14.1	14.1	14.5	14.9	9.3	9.7	9.8	10.1	10.6
	12H	13.8	14.2	14.3	14.6	15.1	9.3	9.7	9.8	10.1	10.5
8H	4H	13.2	13.6	13.6	14.0	14.4	9.5	9.9	10.0	10.3	10.8
	6H	13.7	14.0	14.1	14.4	14.9	9.6	10.0	10.1	10.4	10.9
	8H	13.9	14.2	14.4	14.6	15.1	9.7	9.9	10.1	10.4	10.9
	12H	14.1	14.3	14.6	14.8	15.3	9.7	9.9	10.2	10.4	10.9
12H	4H	13.2	13.5	13.6	14.0	14.4	9.6	9.9	10.0	10.3	10.8
	6H	13.7	13.9	14.1	14.4	14.9	9.7	10.0	10.2	10.4	10.9
	8H	13.9	14.1	14.4	14.6	15.1	9.8	10.0	10.3	10.5	11.0
Variation of the observer position for the luminaire distance S											
S = 1.0H		+1.2 / -0.6					+1.3 / -1.5				
S = 1.5H		+2.5 / -1.3					+2.6 / -2.7				
S = 2.0H		+3.9 / -1.9					+4.0 / -4.0				
Standard table		BK03					BK02				
Correction summand		-4.0					-8.3				
Corrected glare indices referring to 68.5 lm total luminous flux											

Due to our continued efforts to improve our products, product specifications are subject to change without notice. Please refer to our website for the latest test results.