

Light efficiency:

45 Lumen/Watt

Color temperature:

3199 K

Light quality:

CRI:96.1, R_g:96.4, R_f:102.2

P: 1 / V: 3 / F: 1

Output: 170 lm

Peak: 56.2 cd

Power: 3.8 W

Voltage: 24.0 V

Current: 0.159 A

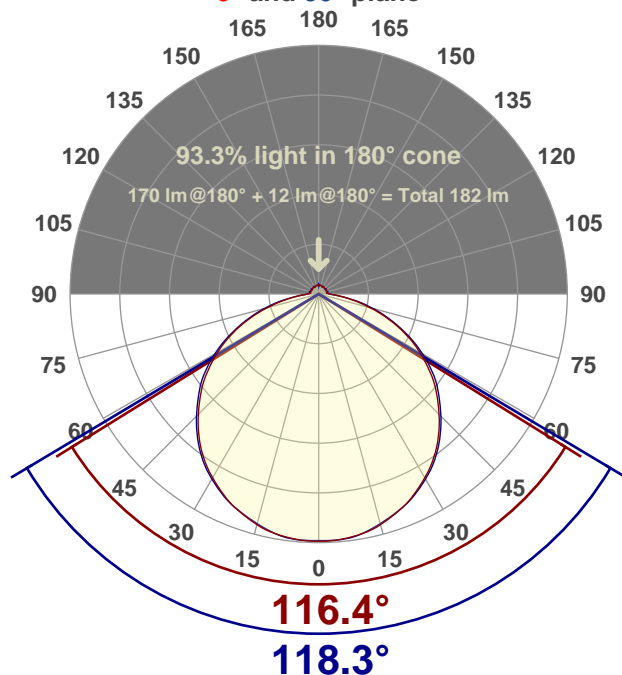
PF: 1.0

THD: n/a %



Angular Distribution

0° and 90° plane



Product name:

TP-5M04W-RGBTW95A-65 AL1607 - 1m

Test Date:

2021-04-26

Beam Angle (50% of the brightness of the centre):

117.2°

Field Angle (10% of the brightness of the centre):

166.2°

Cut Off Angle (2.5% of the brightness of the centre):

360°

Beam Details

*measured at centre of beam

Mounting Height (feet)/(meter)	Lux*	Footcandles*	Beam width (feet) / (meter)
4 ft / 1.2 m	38 lx	3 fc	13.1 ft / 4 m
8 ft / 2.4 m	9 lx	1 fc	26.2 ft / 8 m
12 ft / 3.7 m	4 lx	0 fc	39.3 ft / 12 m
16 ft / 4.9 m	2 lx	0 fc	52.4 ft / 16 m
20 ft / 6.1 m	2 lx	0 fc	65.5 ft / 20 m

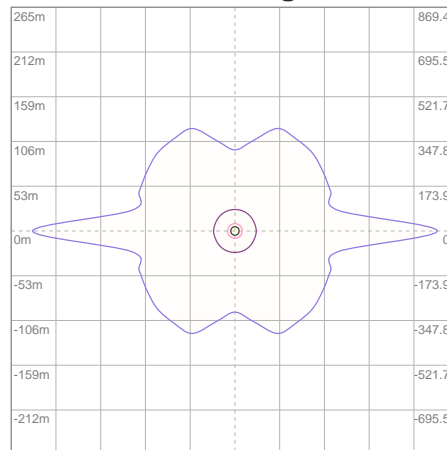
Beam center

Photometric Testing Report

Zonal Lumen Summary

Zone	Lumen	%Luminaire
0-30	43.7	25.71%
0-40	72.2	42.47%
0-60	130	76.47%
60-90	40.1	23.59%
70-100	18.2	10.71%
90-120	0.000	0.00%
0-90	170	100.00%
90-180	0.000	0.00%
0-180	170	100.00%

ISO Lux Diagram



Mounting height: 3.05 meters (10 feet)

Lux at center:	6 lx
3%	0.18 lx
5%	0.30 lx
10%	0.60 lx
30%	1.80 lx
50%	3.00 lx

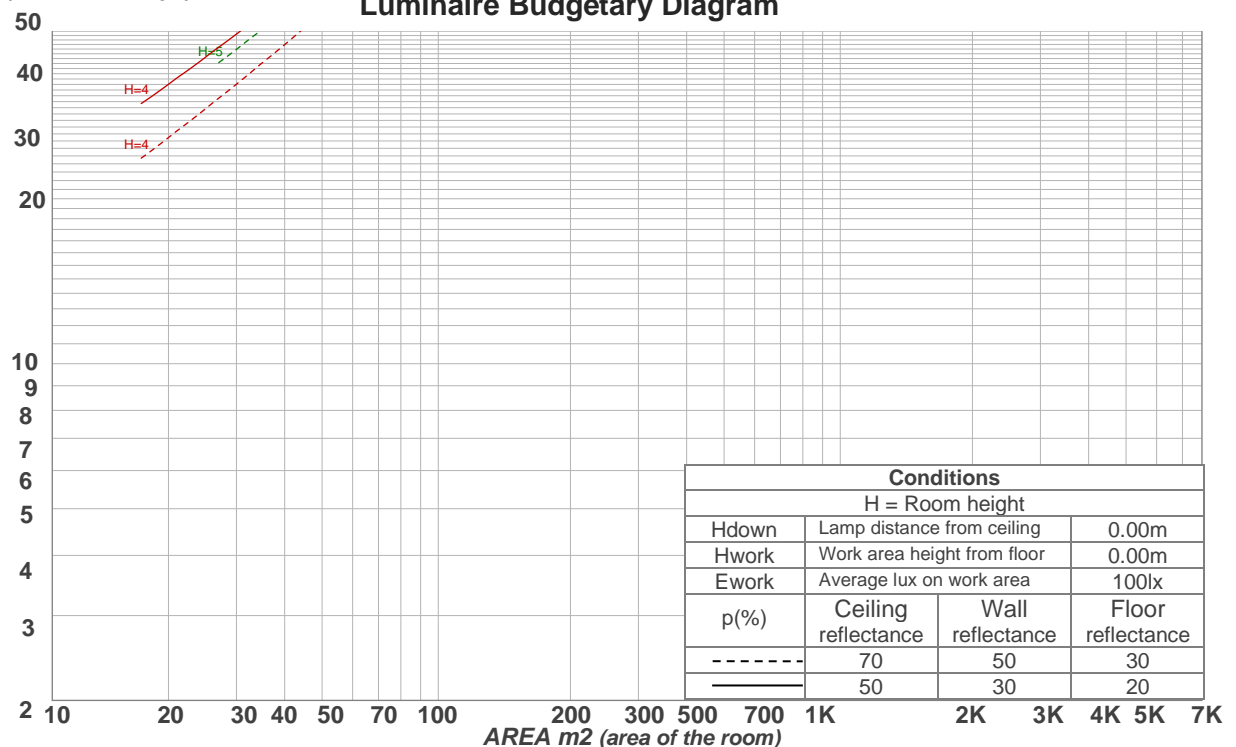
Conditions:
Number of planes: 8
Lux distribution on a surface when lamp is mounted at 3.05 meters from the surface.

Coefficients of Utilization

Ceiling reflectance	80				70				50			30			10			0
Wall reflectance	70	50	30	10	70	50	30	10	50	30	10	50	30	10	50	30	10	0
Floor reflectance	20	20	20	20	20	20	20	20	20	20	20	20	20	20	20	20	20	0
RCR	(RCR: Room Cavity Ratio) Room Values are expressed as percentage of Lumens delivered to the task surface																	
0	119	119	119	119	116	116	116	116	111	111	111	106	106	106	102	102	102	100
1	108	103	98	94	105	101	97	93	96	93	90	92	90	87	89	87	84	82
2	98	89	82	76	95	87	81	75	84	78	73	80	76	72	77	74	70	68
3	89	78	70	63	87	76	69	62	73	67	61	71	65	60	68	63	59	57
4	81	69	60	53	79	68	59	53	65	58	52	63	56	51	61	55	50	48
5	75	61	52	45	73	60	52	45	58	51	45	56	49	44	54	48	44	41
6	69	55	46	40	67	54	46	39	52	45	39	51	44	39	49	43	38	36
7	64	50	41	35	62	49	41	35	48	40	34	46	39	34	45	39	34	32
8	59	46	37	31	58	45	37	31	44	36	31	42	35	30	41	35	30	28
9	55	42	33	28	54	41	33	28	40	33	28	39	32	27	38	32	27	25
10	52	39	31	25	51	38	30	25	37	30	25	36	29	25	35	29	25	23

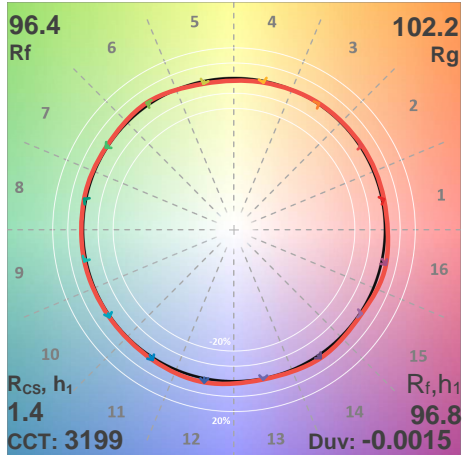
LAMPS (number of lamps)

Luminaire Budgetary Diagram

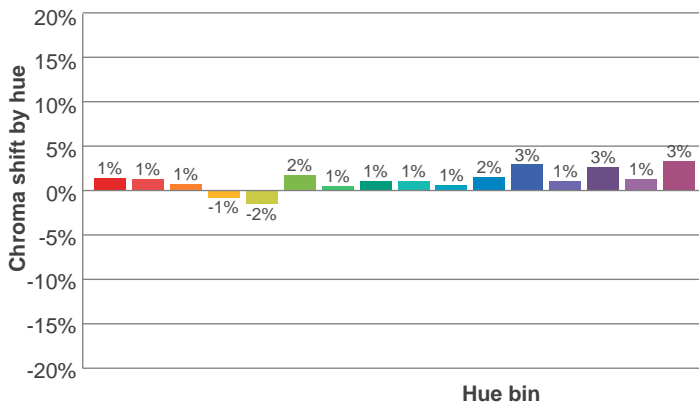
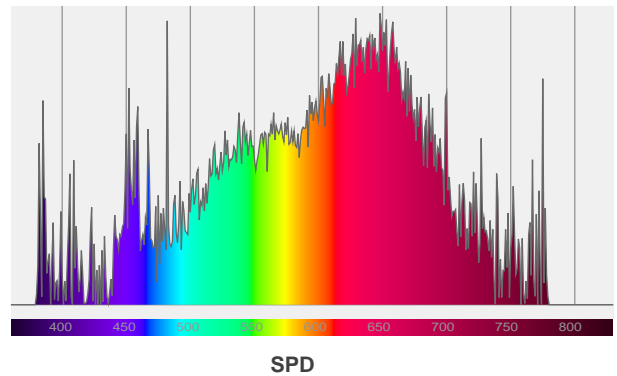
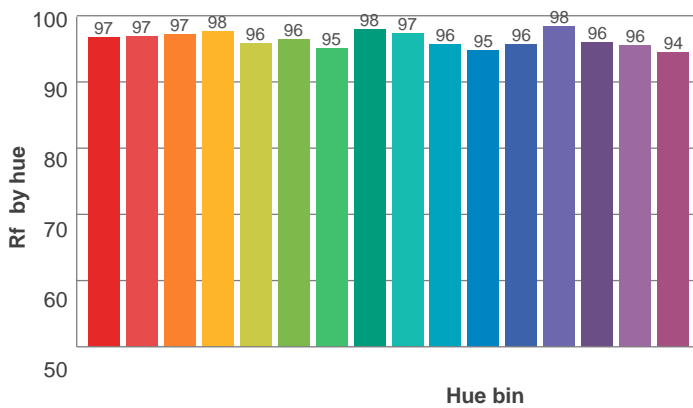
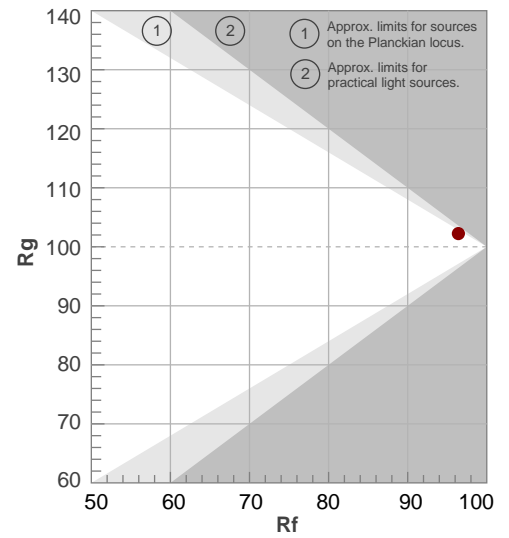


ANSI/IES TM-30-18

P: 1 / V: 3 / F: 1



Hue Bin	R _f	Shifts (%)	
		Chroma	Hue
1	97	1%	0%
2	97	1%	-1%
3	97	1%	0%
4	98	-1%	0%
5	96	-2%	1%
6	96	2%	1%
7	95	1%	2%
8	98	1%	-1%
9	97	1%	1%
10	96	1%	2%
11	95	2%	3%
12	96	3%	1%
13	98	1%	0%
14	96	3%	1%
15	96	1%	1%
16	94	3%	-3%



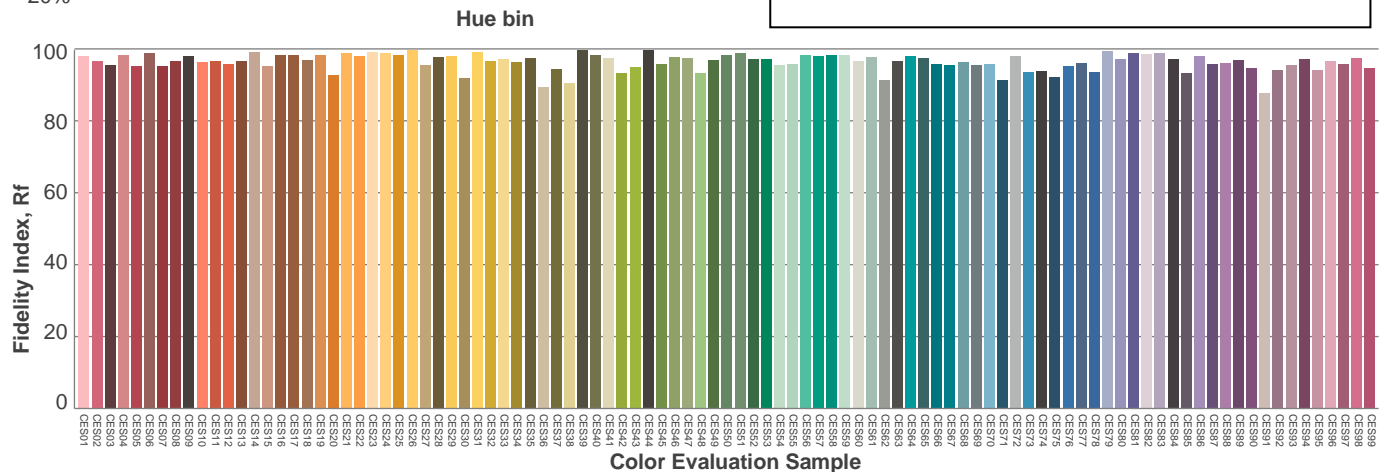
Red: 42.2%, Power=2.89mW

Blue: 8.9%, Power=0.89mW

Green: 21.2%, Power=1.96mW

UVA: 2.3%, Power=0.00mW

Dominant Wavelength: 584nm

1st Peak Wavelength: 648nm2nd Peak Wavelength: 629nm

Glare Evaluation According to UGR

p Ceiling		70	70	50	50	30	70	70	50	50	30
p Walls		50	30	50	30	30	50	30	50	30	30
p Floor		20	20	20	20	20	20	20	20	20	20
Room size X Y		Viewing direction at right angles to lamp axis					Viewing direction parallel to lamp axis				
2H	2H	16.8	18.1	17.1	18.4	18.6	17.0	18.2	17.2	18.5	18.7
	3H	18.4	19.7	18.9	20.0	20.2	18.6	19.9	19.0	20.1	20.4
	4H	19.1	20.4	19.5	20.7	20.9	19.3	20.5	19.7	20.8	21.1
	6H	19.8	20.9	20.1	21.1	21.5	19.9	21.0	20.2	21.3	21.7
	8H	20.0	21.0	20.3	21.3	21.8	20.1	21.2	20.5	21.5	21.9
	12H	20.2	21.2	20.5	21.5	22.0	20.3	21.4	20.7	21.7	22.1
4H	2H	17.5	18.8	17.9	19.0	19.3	17.6	18.8	18.0	19.1	19.4
	3H	19.4	20.5	19.8	20.8	21.3	19.5	20.6	19.9	20.9	21.3
	4H	20.2	21.1	20.6	21.5	22.1	20.3	21.2	20.7	21.7	22.2
	6H	20.9	21.8	21.4	22.1	22.5	21.0	21.9	21.5	22.3	22.6
	8H	21.1	22.0	21.6	22.3	22.7	21.3	22.1	21.8	22.5	22.9
	12H	21.4	22.1	21.9	22.5	23.0	21.5	22.2	22.0	22.7	23.1
8H	4H	20.5	21.4	21.0	21.7	22.1	20.6	21.5	21.1	21.8	22.2
	6H	21.4	22.0	21.9	22.5	23.0	21.5	22.2	22.0	22.6	23.2
	8H	21.8	22.4	22.3	22.9	23.5	21.9	22.5	22.4	23.0	23.6
	12H	22.2	22.6	22.7	23.1	23.7	22.3	22.8	22.9	23.3	23.9
12H	4H	20.5	21.3	21.0	21.7	22.2	20.7	21.4	21.1	21.8	22.3
	6H	21.5	22.1	22.0	22.6	23.2	21.6	22.2	22.1	22.7	23.3
	8H	21.9	22.4	22.5	22.9	23.5	22.1	22.5	22.6	23.0	23.7
Variation of the observer position for the luminaire distance S											
S = 1.0H		0.1 / -0.1					0.1 / -0.1				
S = 1.5H		0.1 / -0.2					0.1 / -0.2				
S = 2.0H		0.3 / -0.4					0.3 / -0.4				
Standard table		n/a					n/a				
Correction summand		n/a					n/a				
Corrected glare indices referring to 170 lm total luminous flux											