

Photometric Testing Report

Light efficiency:
52 Lumen/Watt

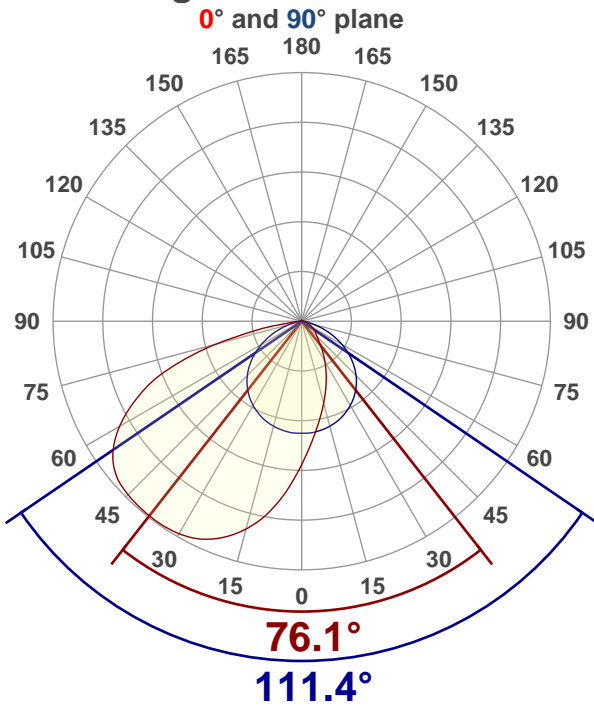
Color temperature:
2857 K

Light quality:
CRI:95.3, R_g:93.7, R_f:99.7
P: 2 / V: - / F: 2

Output: 180 lm
Peak: 95.0 cd
Power: 3.5 W
Voltage: 24.0 V
Current: 0.144 A
PF: 1.0
THD: n/a %

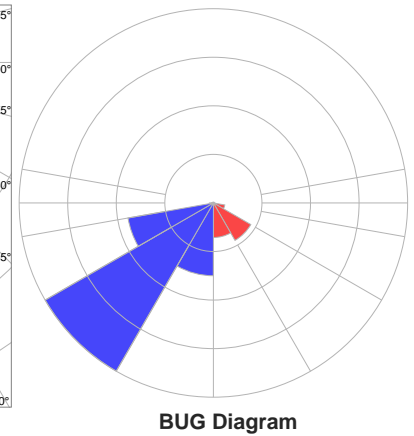
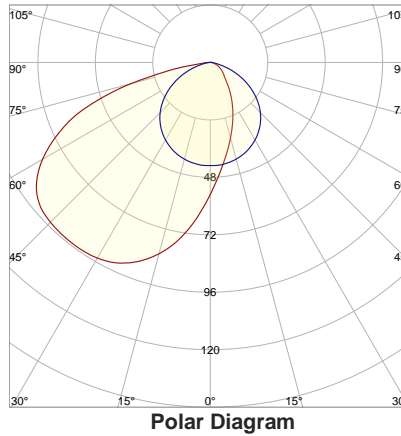


Angular Distribution

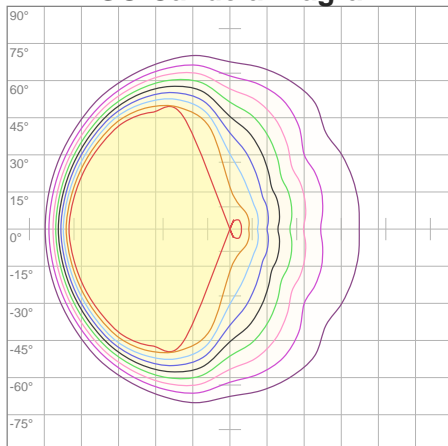


Product name:
UC-WW-2430H90-WH

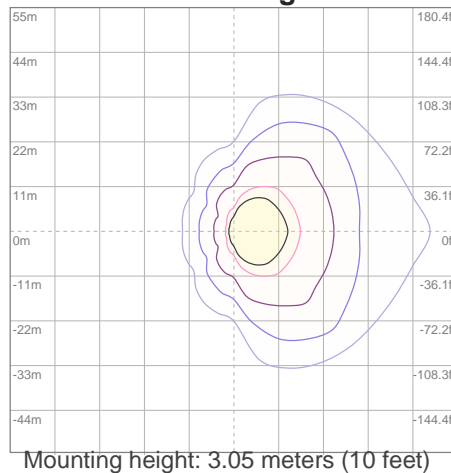
Test Date:
2022-07-20



ISO Candela Diagram



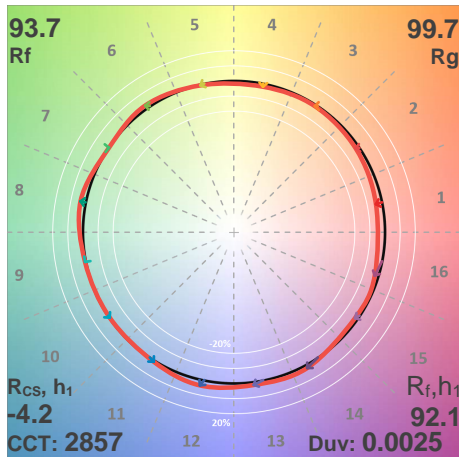
ISO Lux Diagram



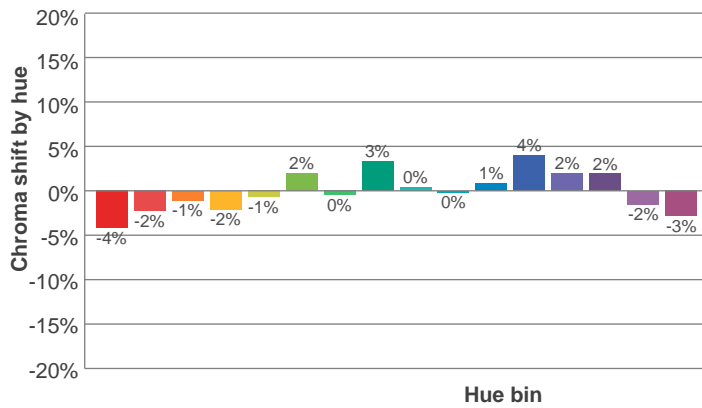
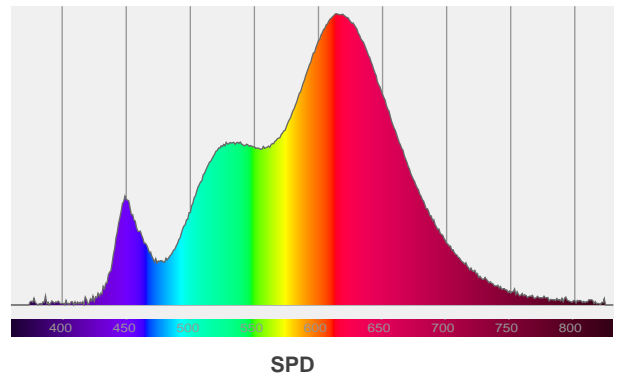
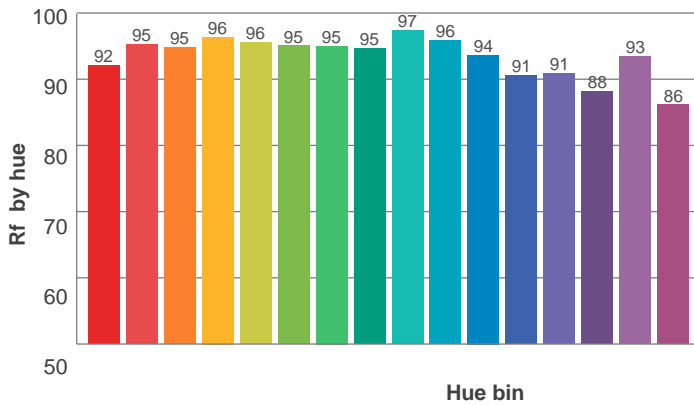
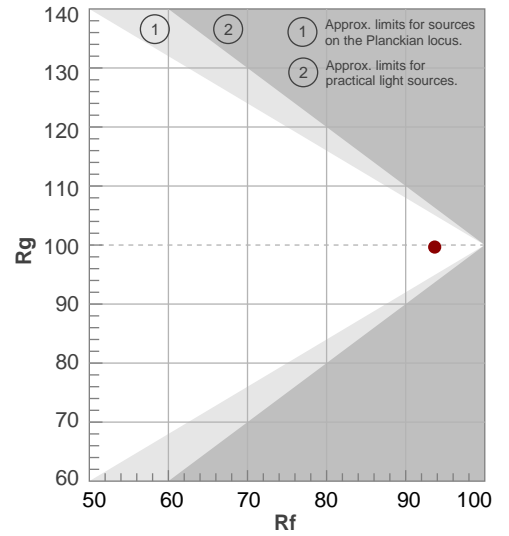
Lux at center:	6 lx
3%	0.18 lx
5%	0.30 lx
10%	0.60 lx
30%	1.80 lx
50%	3.00 lx
Conditions:	
Number of planes: 4	
Lux distribution on a surface when lamp is mounted at 3.05 meters from the surface.	

Photometric Testing Report

ANSI/IES TM-30-18 P: 2 / V: - / F: 2



Hue Bin	R _f	Shifts (%)	
		Chroma	Hue
1	92	-4%	0%
2	95	-2%	1%
3	95	-1%	2%
4	96	-2%	0%
5	96	-1%	3%
6	95	2%	2%
7	95	0%	0%
8	95	3%	0%
9	97	0%	0%
10	96	0%	2%
11	94	1%	4%
12	91	4%	-2%
13	91	2%	-7%
14	88	2%	-10%
15	93	-2%	-3%
16	86	-3%	-10%



Red: 36.7%, Power=1.49mW
 Blue: 6.7%, Power=0.67mW
 Green: 25.6%, Power=2.20mW
 UVA: 0.2%, Power=0.04mW
 Dominant Wavelength: 583nm
 1st Peak Wavelength: 614nm
 2nd Peak Wavelength: 539nm

