

Light efficiency:

80 Lumen/Watt

Color temperature:

3058 K

Light quality:

CRI:93.9, R_g:90.6, R_f:99.7

P: 2 / V: - / F: 2

Output: 842 lm

Peak: 1652 cd

Power: 10.6 W

Voltage: 120 V

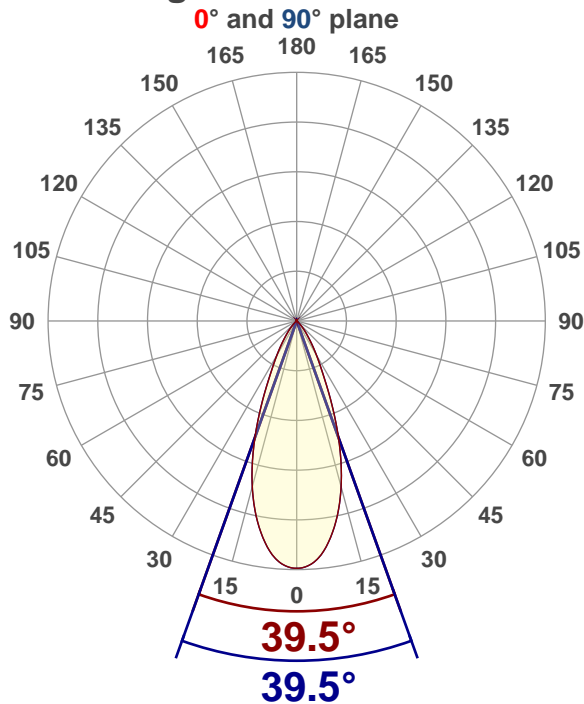
Current: 0.088 A

PF: 0.9

THD: n/a %



Angular Distribution



Product name:

S4R7WS-A30MC-xx1-xxx

Test Date:

2021-04-12

Beam Angle (50% of the brightness of the centre):
39.5°Field Angle (10% of the brightness of the centre):
67.9°Cut Off Angle (2.5% of the brightness of the centre):
86.9°

Beam Details

*measured at centre of beam

Mounting Height (feet)/(meter)	Lux*	Footcandles*	Beam width (feet) / (meter)
4 ft / 1.2 m	1111 lx	103 fc	2.9 ft / 0.9 m
8 ft / 2.4 m	278 lx	26 fc	5.7 ft / 1.7 m
12 ft / 3.7 m	123 lx	11 fc	8.6 ft / 2.6 m
16 ft / 4.9 m	69 lx	6 fc	11.5 ft / 3.5 m
20 ft / 6.1 m	44 lx	4 fc	14.3 ft / 4.4 m

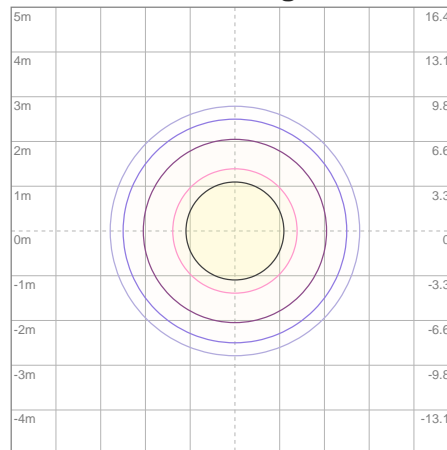
Beam center

Photometric Testing Report

Zonal Lumen Summary

Zone	Lumen	%Luminaire
0-30	678	80.52%
0-40	773	91.81%
0-60	807	95.84%
60-90	14.0	1.66%
70-100	11.8	1.40%
90-120	9.40	1.12%
0-90	821	97.51%
90-180	20.9	2.48%
0-180	842	100.00%

ISO Lux Diagram



Mounting height: 3.05 meters (10 feet)

Lux at center:	178 lx
3%	5.34 lx
5%	8.90 lx
10%	17.80 lx
30%	53.40 lx
50%	89.00 lx

Conditions:

Number of planes: 8

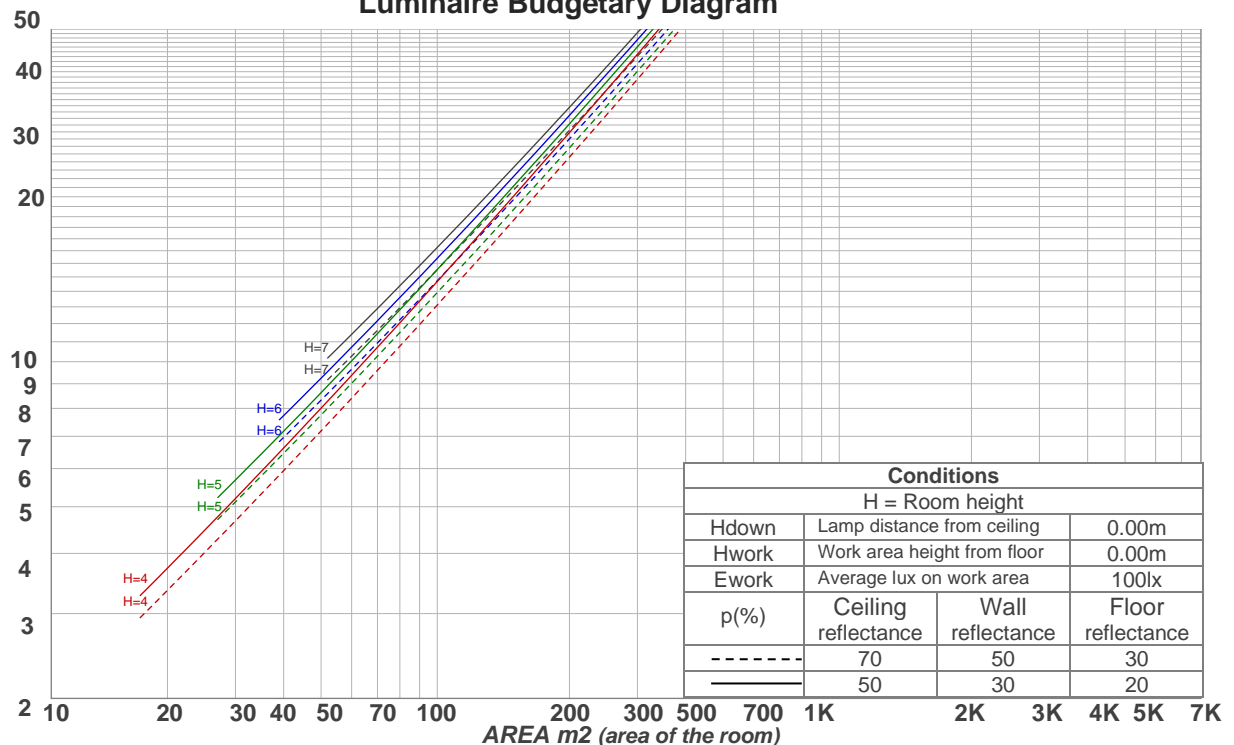
Lux distribution on a surface when lamp is mounted at 3.05 meters from the surface.

Coefficients of Utilization

Ceiling reflectance	80				70				50			30			10			0
Wall reflectance	70	50	30	10	70	50	30	10	50	30	10	50	30	10	50	30	10	0
Floor reflectance	20	20	20	20	20	20	20	20	20	20	20	20	20	20	20	20	20	0
RCR	(RCR: Room Cavity Ratio) Room Values are expressed as percentage of Lumens delivered to the task surface																	
0	118	118	118	118	115	115	115	115	110	110	110	105	105	105	100	100	100	98
1	113	110	108	106	110	108	106	104	104	102	100	99	98	97	96	95	94	92
2	108	104	100	97	106	102	98	95	98	95	93	95	92	90	92	90	88	87
3	103	97	93	89	101	96	92	88	93	89	87	90	87	85	88	85	83	82
4	99	92	87	83	97	91	86	82	88	84	81	86	83	80	84	81	79	77
5	95	87	82	78	93	86	81	77	84	80	77	82	78	76	80	77	75	73
6	91	83	77	73	89	82	77	73	80	76	72	78	75	72	77	74	71	70
7	87	79	73	69	86	78	73	69	76	72	69	75	71	68	74	70	68	66
8	83	75	70	66	82	74	69	66	73	69	65	72	68	65	71	67	65	63
9	80	72	66	63	79	71	66	63	70	65	62	69	65	62	68	64	62	60
10	77	69	63	60	76	68	63	60	67	63	60	66	62	59	65	62	59	58

LAMPS (number of lamps)

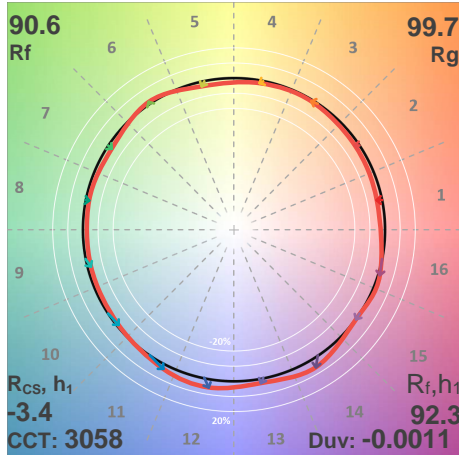
Luminaire Budgetary Diagram



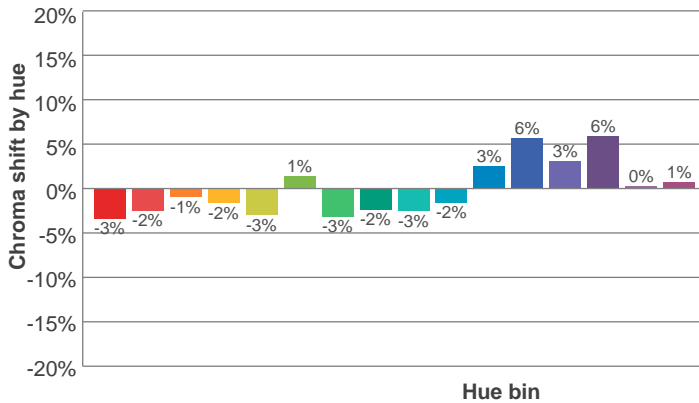
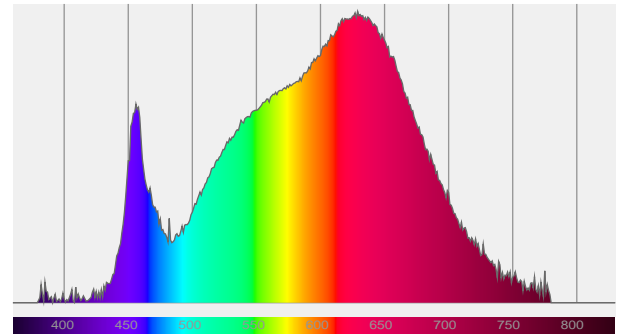
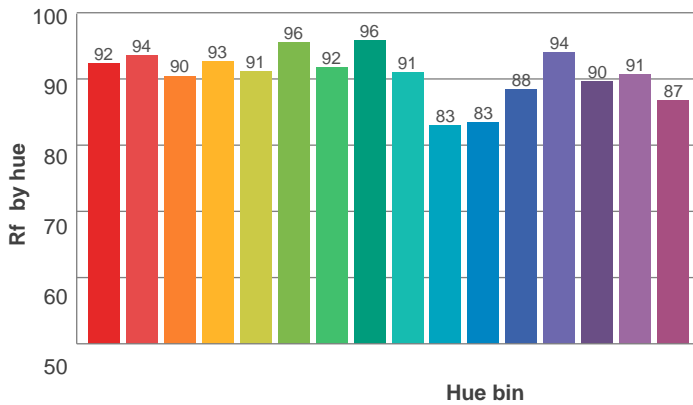
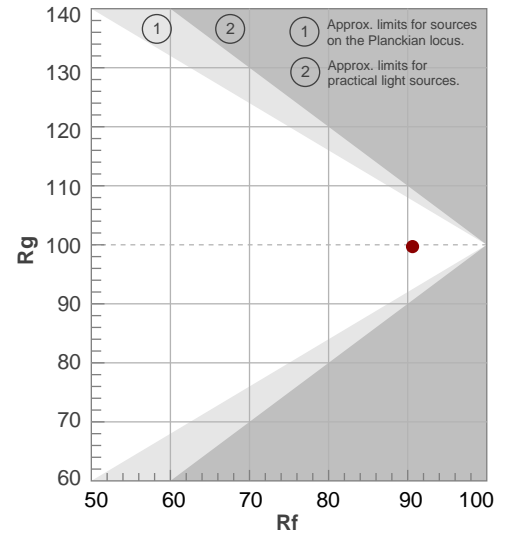
Photometric Testing Report

ANSI/IES TM-30-18

P: 2 / V: - / F: 2



Hue Bin	R _f	Shifts (%)	
		Chroma	Hue
1	92	-3%	1%
2	94	-2%	2%
3	90	-1%	4%
4	93	-2%	2%
5	91	-3%	2%
6	96	1%	0%
7	92	-3%	0%
8	96	-2%	0%
9	91	-3%	6%
10	83	-2%	10%
11	83	3%	12%
12	88	6%	4%
13	94	3%	-2%
14	90	6%	-5%
15	91	0%	-4%
16	87	1%	-11%



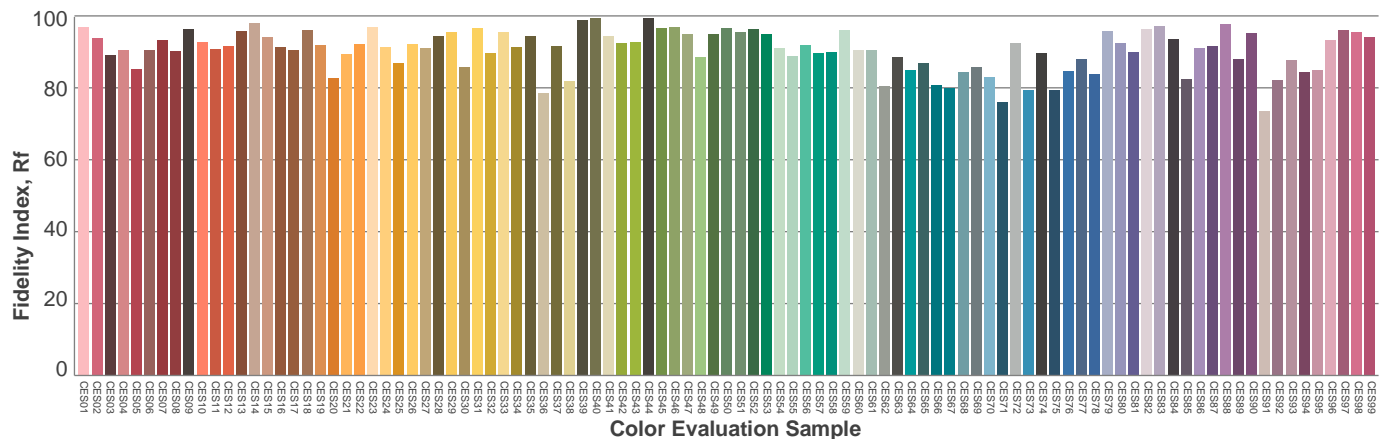
Red: 39.9%, Power=9.7mW

Blue: 9.7%, Power=5.6mW

Green: 23.8%, Power=10.5mW

UVA: 0.3%, Power=0.0mW

Dominant Wavelength: 584nm

1st Peak Wavelength: 629nm2nd Peak Wavelength: 456nm

Glare Evaluation According to UGR

p Ceiling		70	70	50	50	30	70	70	50	50	30
p Walls		50	30	50	30	30	50	30	50	30	30
p Floor		20	20	20	20	20	20	20	20	20	20
Room size X Y		Viewing direction at right angles to lamp axis					Viewing direction parallel to lamp axis				
2H	2H	14.1	14.7	14.3	14.9	15.1	14.1	14.7	14.3	14.9	15.1
	3H	14.0	14.7	14.5	15.0	15.2	14.0	14.7	14.5	15.0	15.2
	4H	14.2	14.9	14.6	15.1	15.4	14.2	14.9	14.6	15.1	15.4
	6H	14.6	15.2	14.9	15.5	15.9	14.6	15.2	14.9	15.5	15.9
	8H	14.8	15.4	15.2	15.7	16.2	14.8	15.4	15.2	15.7	16.2
	12H	15.1	15.7	15.5	16.1	16.5	15.1	15.7	15.5	16.1	16.5
4H	2H	13.8	14.5	14.3	14.8	15.0	13.8	14.5	14.3	14.8	15.0
	3H	14.1	14.6	14.5	15.0	15.4	14.1	14.6	14.5	15.0	15.4
	4H	14.3	14.8	14.8	15.3	15.8	14.3	14.8	14.8	15.3	15.8
	6H	14.9	15.4	15.4	15.8	16.2	14.9	15.4	15.4	15.8	16.2
	8H	15.3	15.7	15.8	16.1	16.5	15.3	15.7	15.8	16.1	16.5
	12H	15.7	16.1	16.3	16.6	17.1	15.7	16.1	16.3	16.6	17.1
8H	4H	14.4	14.9	15.0	15.3	15.7	14.4	14.9	15.0	15.3	15.7
	6H	15.2	15.5	15.8	16.0	16.6	15.2	15.5	15.8	16.0	16.6
	8H	15.8	16.1	16.4	16.6	17.3	15.8	16.1	16.4	16.6	17.3
	12H	16.5	16.7	17.2	17.3	17.9	16.5	16.7	17.2	17.3	17.9
12H	4H	14.4	14.8	15.0	15.2	15.7	14.4	14.8	15.0	15.2	15.7
	6H	15.4	15.6	15.9	16.2	16.8	15.4	15.6	15.9	16.2	16.8
	8H	16.0	16.2	16.6	16.8	17.4	16.0	16.2	16.6	16.8	17.4
Variation of the observer position for the luminaire distance S											
S = 1.0H		2.2 / -1.1					2.2 / -1.1				
S = 1.5H		4.1 / -1.2					4.1 / -1.2				
S = 2.0H		5.8 / -1.4					5.8 / -1.4				
Standard table		n/a					n/a				
Correction summand		n/a					n/a				
Corrected glare indices referring to 842 lm total luminous flux											