

Light efficiency:

57 Lumen/Watt

Color temperature:

3049 K

Light quality:

CRI:93.5, R_g:90.6, R_f:98.9

P: 2 / V: - / F: 2

Output: 2297 lm

Peak: 2475 cd

Power: 40.4 W

Voltage: 120 V

Current: 0.337 A

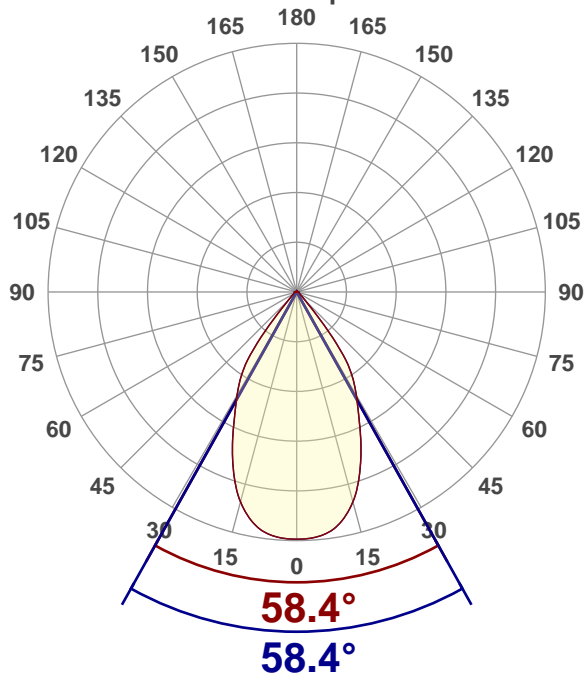
PF: 0.9

THD: n/a %



Angular Distribution

0° and 90° plane



Product name:

S4RGWS-D30FC-xx1-xxx

Test Date:

2020-05-25

Beam Angle (50% of the brightness of the centre):

58.4°

Field Angle (10% of the brightness of the centre):

83.6°

Cut Off Angle (2.5% of the brightness of the centre):

101.6°

Beam Details

*measured at centre of beam

Mounting Height (feet)/(meter)	Lux*	Footcandles*	Beam width (feet) / (meter)
4 ft / 1.2 m	1665 lx	155 fc	4.5 ft / 1.4 m
8 ft / 2.4 m	416 lx	39 fc	8.9 ft / 2.7 m
12 ft / 3.7 m	185 lx	17 fc	13.4 ft / 4.1 m
16 ft / 4.9 m	104 lx	10 fc	17.9 ft / 5.4 m
20 ft / 6.1 m	67 lx	6 fc	22.3 ft / 6.8 m

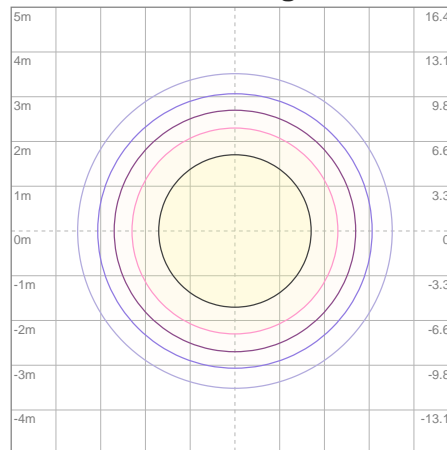
Beam center

Photometric Testing Report

Zonal Lumen Summary

Zone	Lumen	%Luminaire
0-30	1525	66.39%
0-40	2052	89.33%
0-60	2210	96.21%
60-90	58.3	2.54%
70-100	31.2	1.36%
90-120	11.5	0.50%
0-90	2269	98.78%
90-180	28.2	1.23%
0-180	2297	100.00%

ISO Lux Diagram



Lux at center:	266 lx
3%	7.98 lx
5%	13.30 lx
10%	26.60 lx
30%	79.80 lx
50%	133.00 lx
Conditions: Number of planes: 8 Lux distribution on a surface when lamp is mounted at 3.05 meters from the surface.	

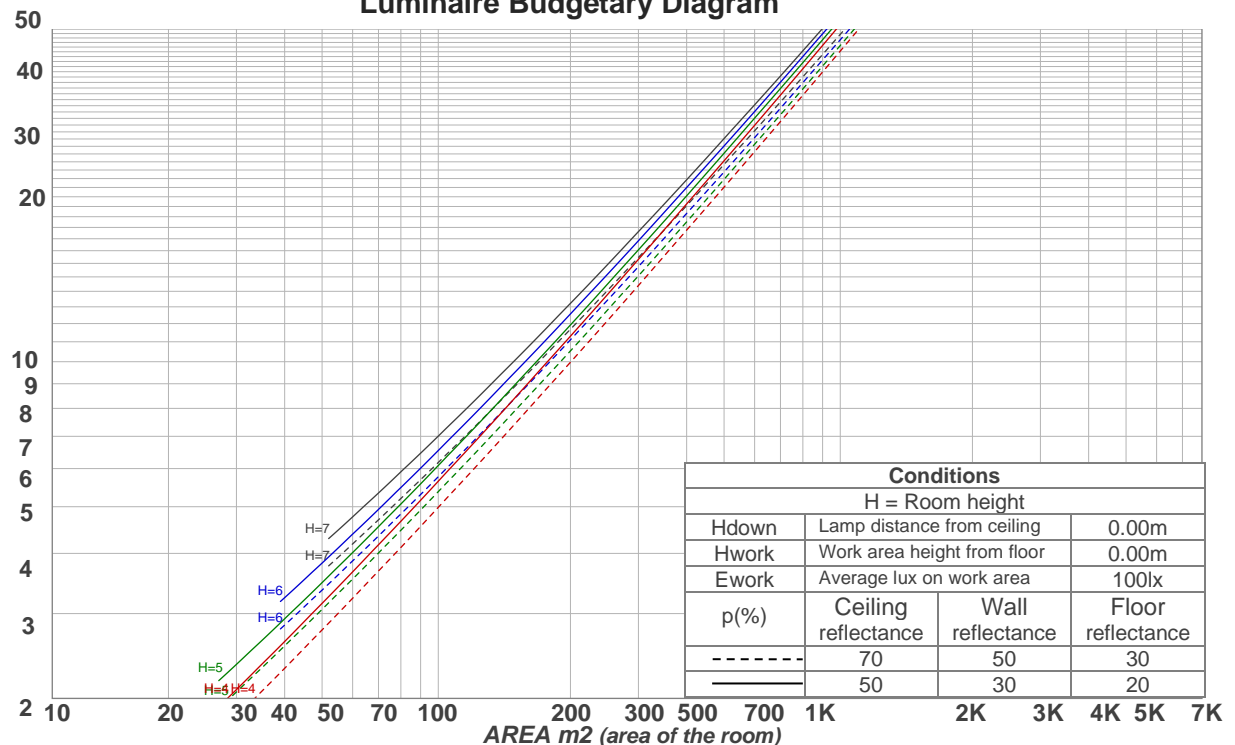
Mounting height: 3.05 meters (10 feet)

Coefficients of Utilization

Ceiling reflectance	80				70				50			30			10			0
Wall reflectance	70	50	30	10	70	50	30	10	50	30	10	50	30	10	50	30	10	0
Floor reflectance	20	20	20	20	20	20	20	20	20	20	20	20	20	20	20	20	20	0
RCR	(RCR: Room Cavity Ratio) Room Values are expressed as percentage of Lumens delivered to the task surface																	
0	119	119	119	119	116	116	116	116	110	110	110	105	105	105	101	101	101	99
1	113	110	107	105	110	108	105	103	103	101	100	99	98	96	96	94	93	92
2	107	102	97	94	104	100	96	93	96	93	90	93	91	88	90	88	86	85
3	101	94	89	85	99	93	88	84	90	86	83	87	84	81	85	82	80	78
4	96	88	82	78	94	87	81	77	84	80	76	82	78	75	80	77	74	72
5	91	82	76	72	89	81	75	71	79	74	70	77	73	70	76	72	69	67
6	86	77	71	66	85	76	70	66	74	69	65	73	68	65	71	67	64	63
7	82	72	66	62	80	71	66	61	70	65	61	69	64	61	67	63	60	59
8	78	68	62	57	76	67	61	57	66	61	57	65	60	57	64	60	56	55
9	74	64	58	54	73	63	58	54	62	57	53	61	57	53	60	56	53	52
10	70	60	54	51	69	60	54	50	59	54	50	58	53	50	57	53	50	48

LAMPS (number of lamps)

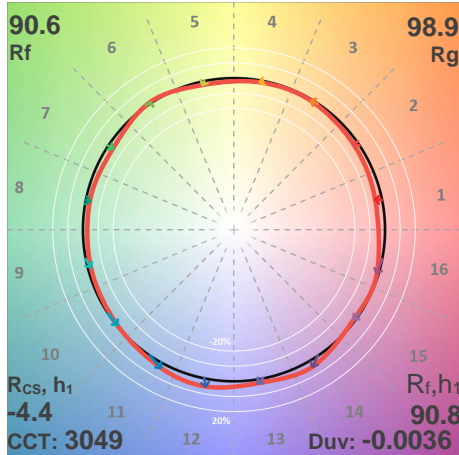
Luminaire Budgetary Diagram



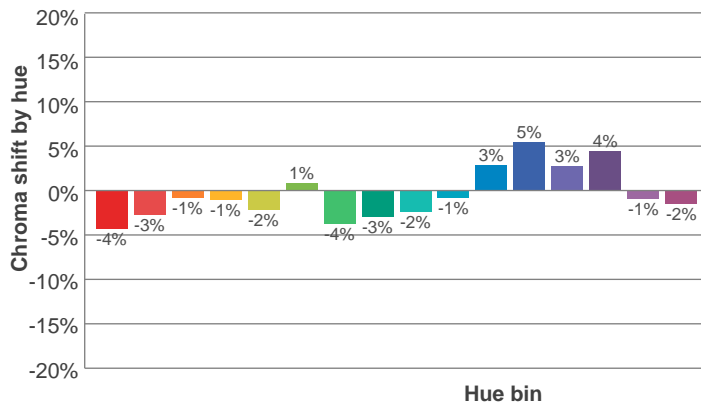
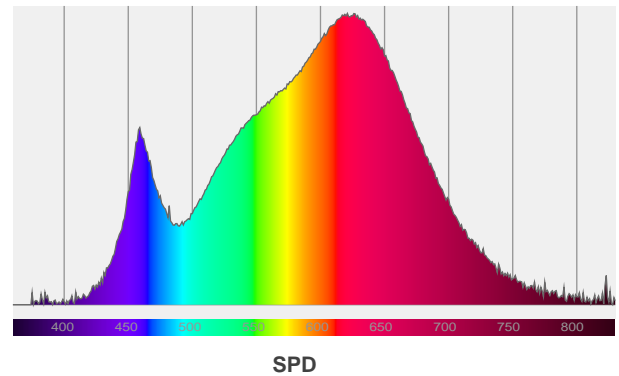
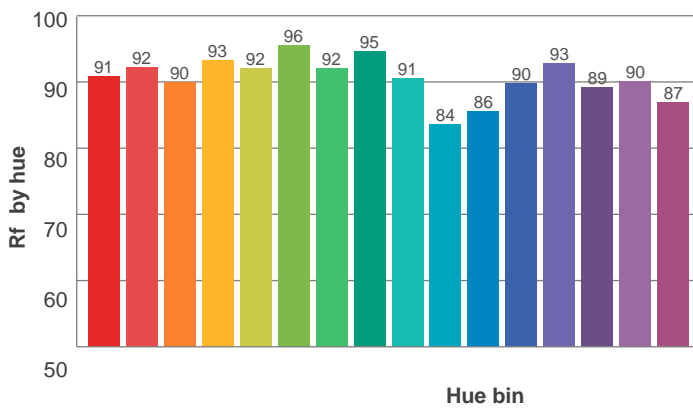
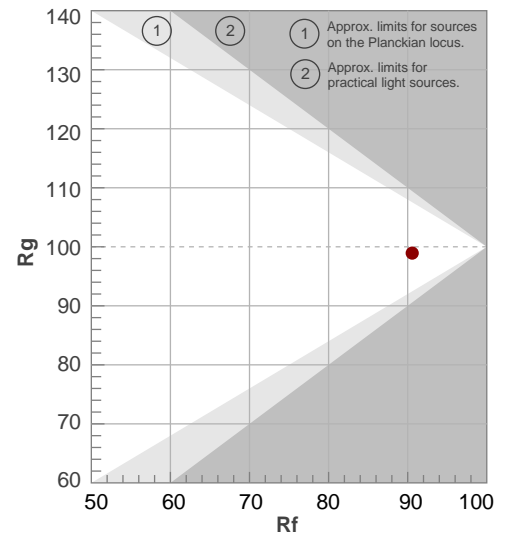
Photometric Testing Report

ANSI/IES TM-30-18

P: 2 / V: - / F: 2



Hue Bin	R _f	Shifts (%)	
		Chroma	Hue
1	91	-4%	1%
2	92	-3%	3%
3	90	-1%	5%
4	93	-1%	2%
5	92	-2%	2%
6	96	1%	-1%
7	92	-4%	0%
8	95	-3%	0%
9	91	-2%	6%
10	84	-1%	10%
11	86	3%	11%
12	90	5%	2%
13	93	3%	-4%
14	89	4%	-7%
15	90	-1%	-5%
16	87	-2%	-10%



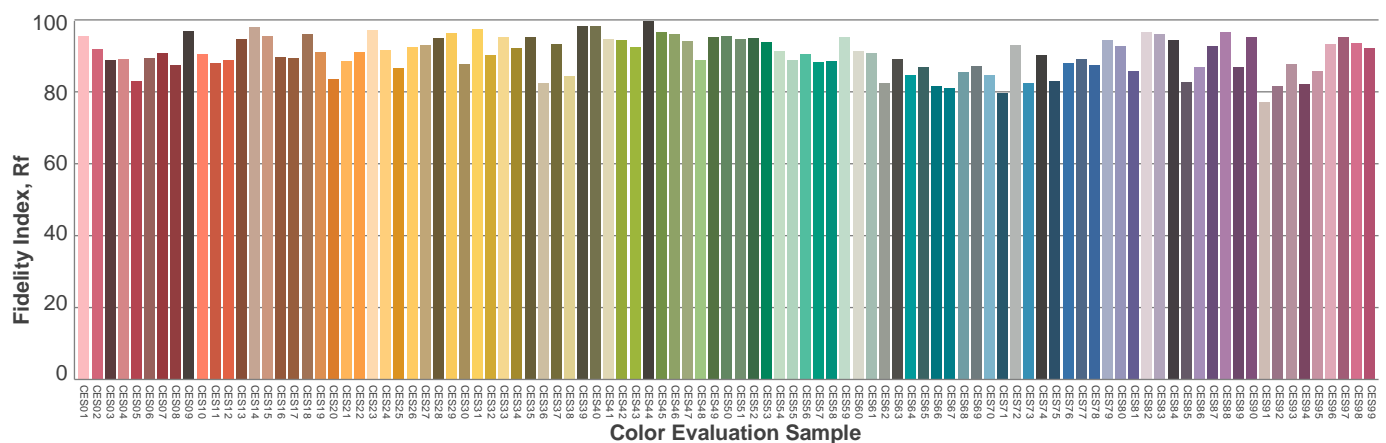
Red: 38.3%, Power=25.1mW

Blue: 10.3%, Power=19.7mW

Green: 22.9%, Power=27.9mW

UVA: 0.2%, Power=1.9mW

Dominant Wavelength: 585nm

1st Peak Wavelength: 621nm2nd Peak Wavelength: 459nm

Glare Evaluation According to UGR

p Ceiling		70	70	50	50	30	70	70	50	50	30
p Walls		50	30	50	30	30	50	30	50	30	30
p Floor		20	20	20	20	20	20	20	20	20	20
Room size X Y		Viewing direction at right angles to lamp axis					Viewing direction parallel to lamp axis				
2H	2H	21.5	22.2	21.6	22.4	22.7	21.5	22.2	21.6	22.4	22.7
	3H	21.5	22.3	21.9	22.5	22.7	21.5	22.3	21.9	22.5	22.7
	4H	21.6	22.4	22.0	22.6	22.9	21.6	22.4	22.0	22.6	22.9
	6H	21.7	22.4	22.0	22.7	23.1	21.7	22.4	22.0	22.7	23.1
	8H	21.7	22.4	22.1	22.7	23.1	21.7	22.4	22.1	22.7	23.1
	12H	21.7	22.3	22.1	22.7	23.1	21.7	22.3	22.1	22.7	23.1
4H	2H	21.2	22.0	21.7	22.3	22.5	21.2	22.0	21.7	22.3	22.5
	3H	21.5	22.1	21.9	22.5	23.0	21.5	22.1	21.9	22.5	23.0
	4H	21.7	22.2	22.1	22.7	23.2	21.7	22.2	22.1	22.7	23.2
	6H	21.8	22.4	22.3	22.7	23.1	21.8	22.4	22.3	22.7	23.1
	8H	21.8	22.4	22.4	22.7	23.1	21.8	22.4	22.4	22.7	23.1
	12H	21.8	22.3	22.4	22.7	23.2	21.8	22.3	22.4	22.7	23.2
8H	4H	21.7	22.2	22.2	22.6	23.0	21.7	22.2	22.2	22.6	23.0
	6H	21.9	22.3	22.4	22.7	23.3	21.9	22.3	22.4	22.7	23.3
	8H	22.0	22.3	22.6	22.8	23.5	22.0	22.3	22.6	22.8	23.5
	12H	22.1	22.3	22.7	22.8	23.5	22.1	22.3	22.7	22.8	23.5
12H	4H	21.6	22.0	22.1	22.5	23.0	21.6	22.0	22.1	22.5	23.0
	6H	21.9	22.2	22.5	22.8	23.4	21.9	22.2	22.5	22.8	23.4
	8H	22.0	22.3	22.6	22.8	23.4	22.0	22.3	22.6	22.8	23.4
Variation of the observer position for the luminaire distance S											
S = 1.0H		3.6 / -2.9					3.6 / -2.9				
S = 1.5H		6.0 / -3.2					6.0 / -3.2				
S = 2.0H		7.9 / -3.4					7.9 / -3.4				
Standard table		n/a					n/a				
Correction summand		n/a					n/a				
Corrected glare indices referring to 2297 lm total luminous flux											