

## Light efficiency:

**154 Lumen/Watt**

## Color temperature:

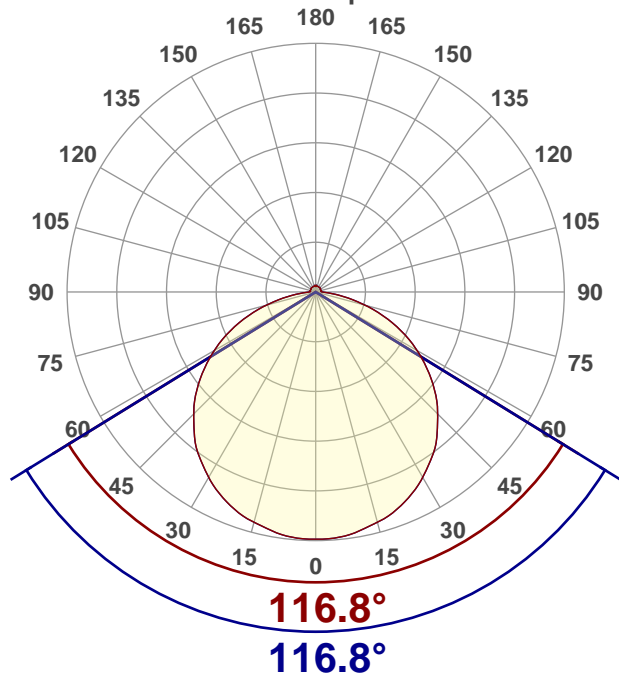
**2828 K**

## Light quality:

**CRI:84.3, R<sub>g</sub>:87.4, R<sub>f</sub>:93.4****P: 3 / V: - / F: -****Output: 584 lm****Peak: 185 cd****Power: 3.8 W****Voltage: 24.0 V****Current: 0.158 A****PF: 1.0****THD: n/a %**

## Angular Distribution

0° and 90° plane



Product name:

**LED-TP1VH-12-30K**

Test Date:

**2020-07-31**

Beam Angle (50% of the brightness of the centre):

**116.8°**

Field Angle (10% of the brightness of the centre):

**163.6°**

Cut Off Angle (2.5% of the brightness of the centre):

**348.5°**

## Beam Details

\*measured at centre of beam

Mounting Height (feet)/(meter)	Lux*	Footcandles*	Beam width (feet) / (meter)
4 ft / 1.2 m	125 lx	12 fc	13 ft / 4 m
8 ft / 2.4 m	31 lx	3 fc	26 ft / 7.9 m
12 ft / 3.7 m	14 lx	1 fc	39 ft / 11.9 m
16 ft / 4.9 m	8 lx	1 fc	52 ft / 15.8 m
20 ft / 6.1 m	5 lx	0 fc	65 ft / 19.8 m

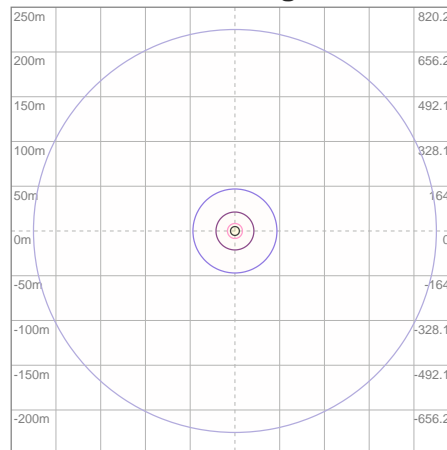
Beam center

## Photometric Testing Report

## Zonal Lumen Summary

Zone	Lumen	%Luminaire
0-30	146	25.00%
0-40	241	41.27%
0-60	432	73.97%
60-90	125	21.40%
70-100	58.3	9.98%
90-120	13.1	2.24%
0-90	557	95.38%
90-180	26.8	4.59%
0-180	584	100.00%

## ISO Lux Diagram



Mounting height: 3.05 meters (10 feet)

Lux at center:	20 lx
3%	0.60 lx
5%	1.00 lx
10%	2.00 lx
30%	6.00 lx
50%	10.00 lx

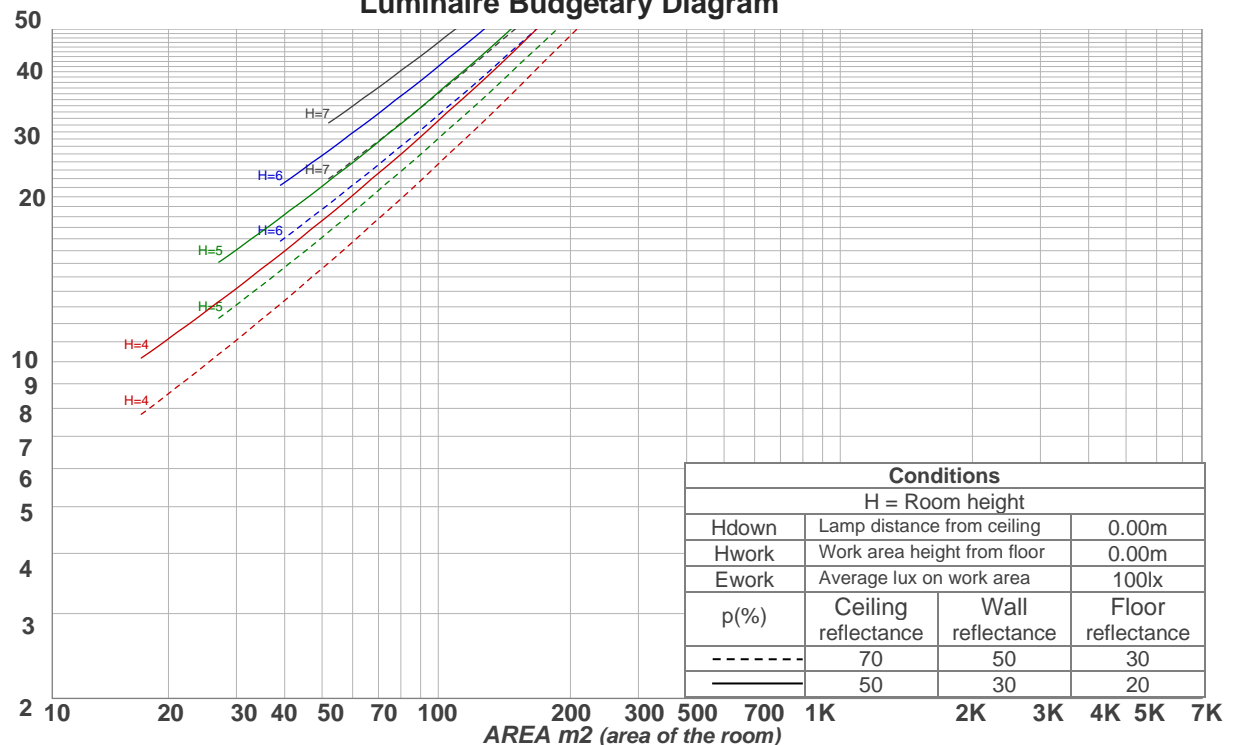
**Conditions:**  
Number of planes: 8  
Lux distribution on a surface when lamp is mounted at 3.05 meters from the surface.

## Coefficients of Utilization

Ceiling reflectance	80				70				50			30			10			0
Wall reflectance	70	50	30	10	70	50	30	10	50	30	10	50	30	10	50	30	10	0
Floor reflectance	20	20	20	20	20	20	20	20	20	20	20	20	20	20	20	20	20	0
RCR	(RCR: Room Cavity Ratio) Room Values are expressed as percentage of Lumens delivered to the task surface																	
0	118	118	118	118	115	115	115	115	109	109	109	103	103	103	98	98	98	95
1	107	102	98	94	104	100	96	92	95	91	88	90	87	85	86	84	82	79
2	97	89	82	76	94	87	80	75	82	77	73	78	74	70	75	71	68	66
3	89	78	70	63	86	76	68	62	72	66	61	69	63	59	66	61	57	55
4	81	69	60	53	78	67	59	53	64	57	51	61	55	50	59	53	49	47
5	74	61	52	46	72	60	51	45	57	50	44	55	48	43	53	47	42	40
6	69	55	46	40	66	54	45	39	52	44	39	50	43	38	48	42	37	35
7	64	50	41	35	62	49	41	35	47	39	34	45	38	33	43	37	33	31
8	59	45	37	31	57	45	36	31	43	36	30	41	35	30	40	34	29	27
9	55	42	33	28	53	41	33	28	39	32	27	38	32	27	37	31	26	25
10	52	38	30	25	50	38	30	25	36	29	25	35	29	24	34	28	24	22

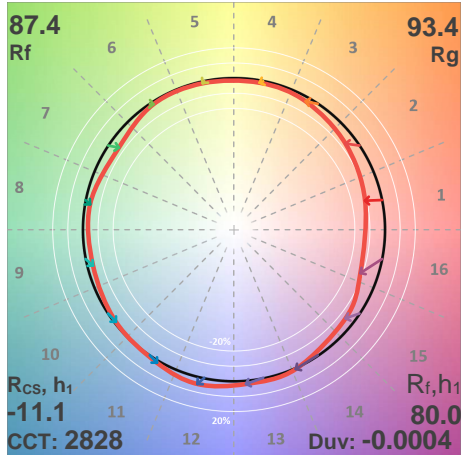
LAMPS (number of lamps)

## Luminaire Budgetary Diagram

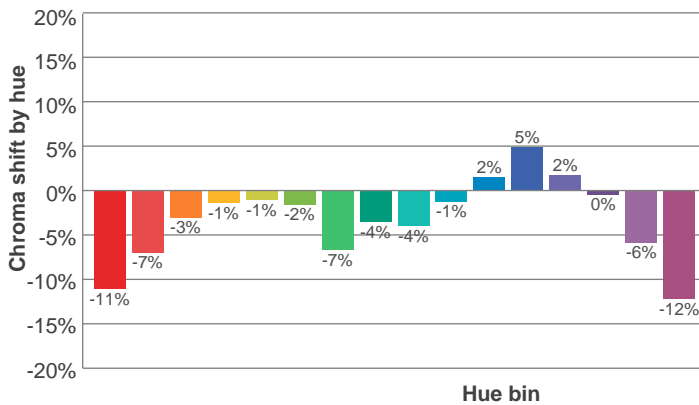
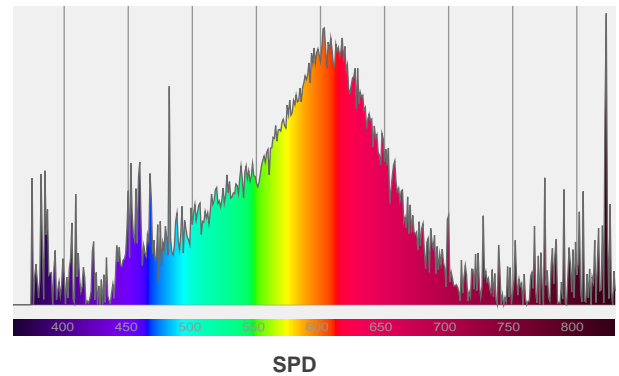
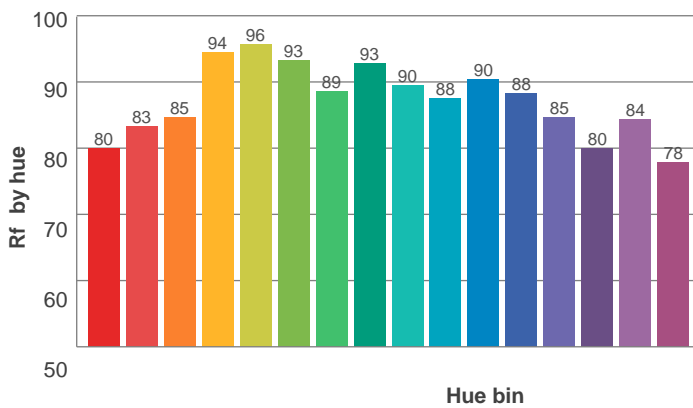
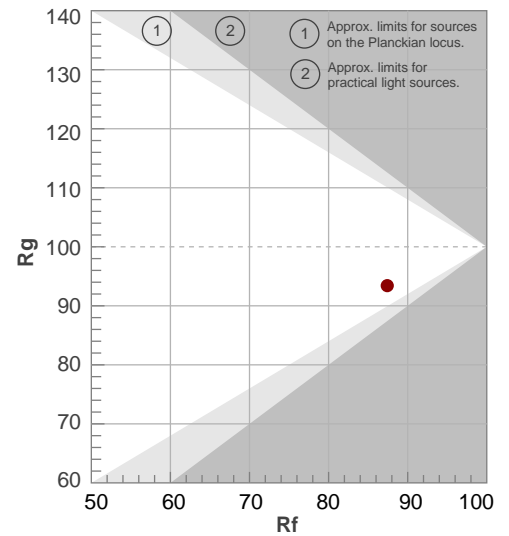


ANSI/IES TM-30-18

P: 3 / V: - / F: -



Hue Bin	R <sub>f</sub>	Shifts (%)	
		Chroma	Hue
1	80	-11%	2%
2	83	-7%	6%
3	85	-3%	8%
4	94	-1%	2%
5	96	-1%	1%
6	93	-2%	-2%
7	89	-7%	-3%
8	93	-4%	2%
9	90	-4%	5%
10	88	-1%	7%
11	90	2%	7%
12	88	5%	-4%
13	85	2%	-12%
14	80	0%	-17%
15	84	-6%	-8%
16	78	-12%	-12%



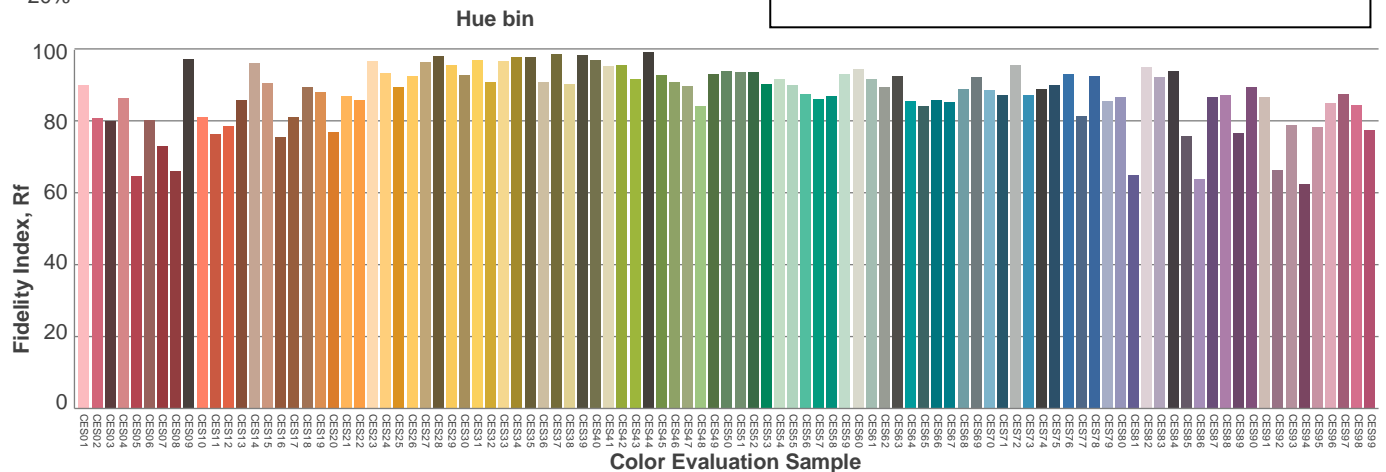
Red: 27.8%, Power=4.1mW

Blue: 8.7%, Power=3.2mW

Green: 22.4%, Power=5.3mW

UVA: 2.7%, Power=6.3mW

Dominant Wavelength: 584nm

1<sup>st</sup> Peak Wavelength: 823nm2<sup>nd</sup> Peak Wavelength: n/anm

### Glare Evaluation According to UGR

p Ceiling		70	70	50	50	30	70	70	50	50	30
p Walls		50	30	50	30	30	50	30	50	30	30
p Floor		20	20	20	20	20	20	20	20	20	20
Room size X      Y		Viewing direction at right angles to lamp axis					Viewing direction parallel to lamp axis				
2H	2H	26.9	28.1	27.2	28.5	28.8	26.9	28.1	27.2	28.5	28.8
	3H	28.5	29.7	28.9	30.0	30.3	28.5	29.7	28.9	30.0	30.3
	4H	29.1	30.3	29.6	30.6	31.0	29.1	30.3	29.6	30.6	31.0
	6H	29.6	30.6	30.0	31.0	31.5	29.6	30.6	30.0	31.0	31.5
	8H	29.8	30.8	30.2	31.2	31.7	29.8	30.8	30.2	31.2	31.7
	12H	29.9	30.9	30.3	31.3	31.8	29.9	30.9	30.3	31.3	31.8
4H	2H	27.5	28.7	28.0	29.1	29.4	27.5	28.7	28.0	29.1	29.4
	3H	29.4	30.4	29.8	30.8	31.3	29.4	30.4	29.8	30.8	31.3
	4H	30.1	31.0	30.6	31.4	32.1	30.1	31.0	30.6	31.4	32.1
	6H	30.6	31.5	31.2	31.9	32.4	30.6	31.5	31.2	31.9	32.4
	8H	30.9	31.6	31.4	32.1	32.6	30.9	31.6	31.4	32.1	32.6
	12H	31.0	31.7	31.6	32.2	32.7	31.0	31.7	31.6	32.2	32.7
8H	4H	30.4	31.1	30.9	31.6	32.0	30.4	31.1	30.9	31.6	32.0
	6H	31.1	31.7	31.7	32.2	32.8	31.1	31.7	31.7	32.2	32.8
	8H	31.4	31.9	32.0	32.5	33.2	31.4	31.9	32.0	32.5	33.2
	12H	31.7	32.1	32.3	32.7	33.4	31.7	32.1	32.3	32.7	33.4
12H	4H	30.4	31.0	30.9	31.5	32.1	30.4	31.0	30.9	31.5	32.1
	6H	31.2	31.7	31.8	32.3	33.0	31.2	31.7	31.8	32.3	33.0
	8H	31.5	32.0	32.2	32.5	33.2	31.5	32.0	32.2	32.5	33.2
Variation of the observer position for the luminaire distance S											
S = 1.0H		0.1 / -0.1					0.1 / -0.1				
S = 1.5H		0.1 / -0.2					0.1 / -0.2				
S = 2.0H		0.4 / -0.4					0.4 / -0.4				
Standard table		n/a					n/a				
Correction summand		n/a					n/a				
Corrected glare indices referring to 584 lm total luminous flux											