

Light efficiency:

67 Lumen/Watt

Light quality:

CRI: 82.1

Color temperature:

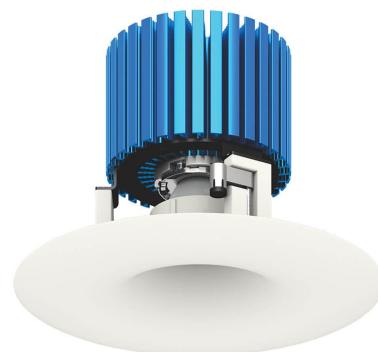
2940 K

Output: 3305 lm

Peak: 8439 cd

Power: 49.0 W

PF: 1.0

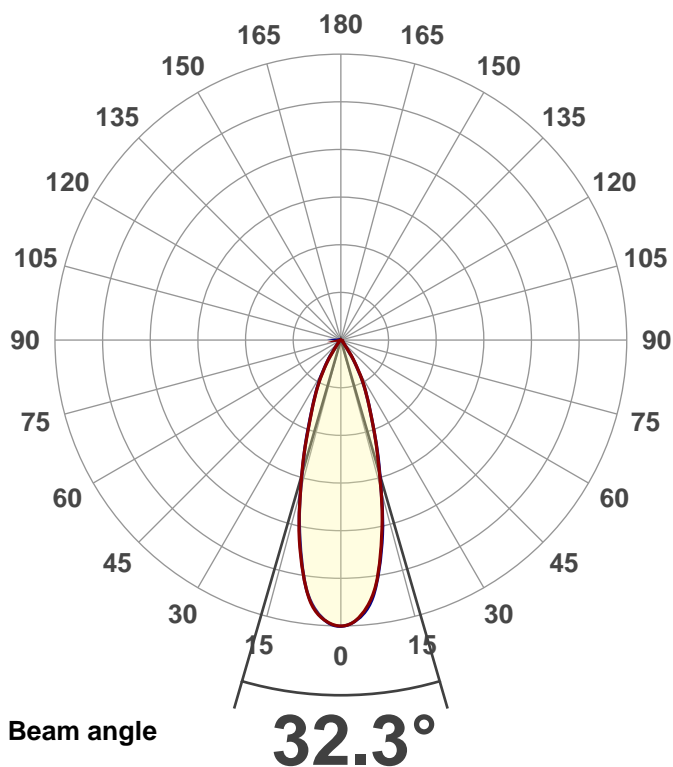


Product name:

621-4INV-XTM19-40LM-30K-83-  
SA30-120-DIM10-NC-WH

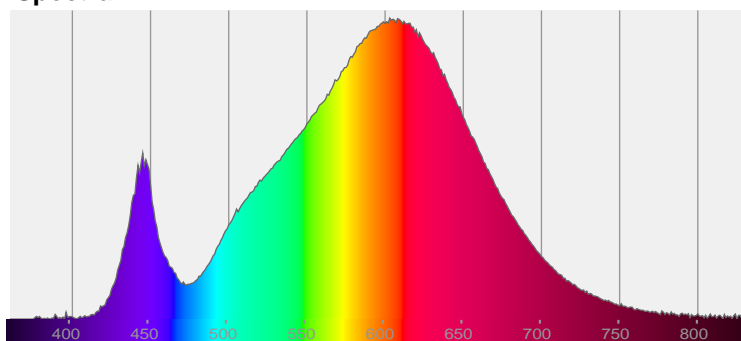
Date and time:

12/5/2016 4:10:16 PM

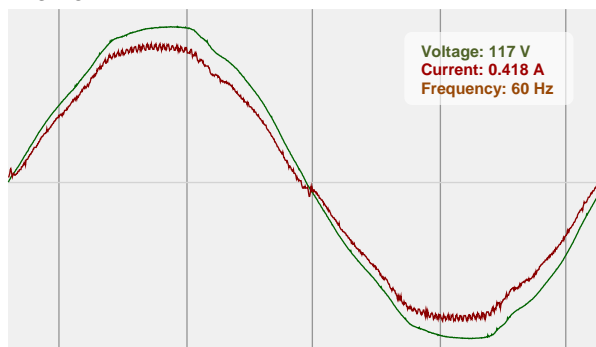


CIE 1931  
x: 0.442  
y: 0.406

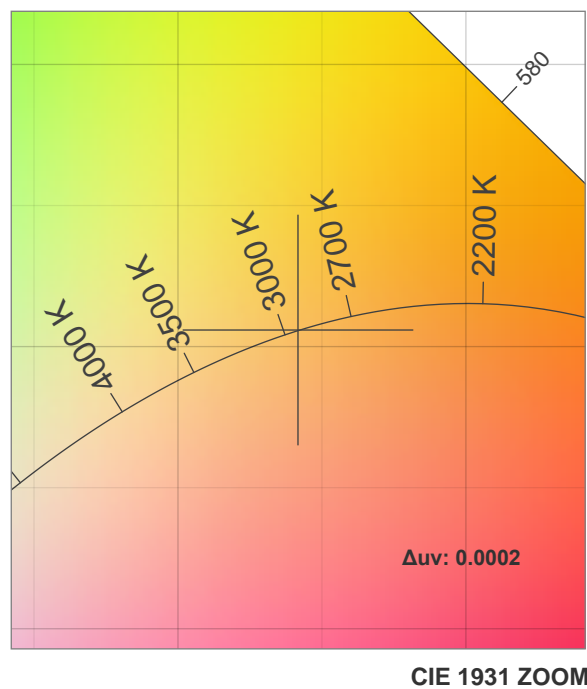
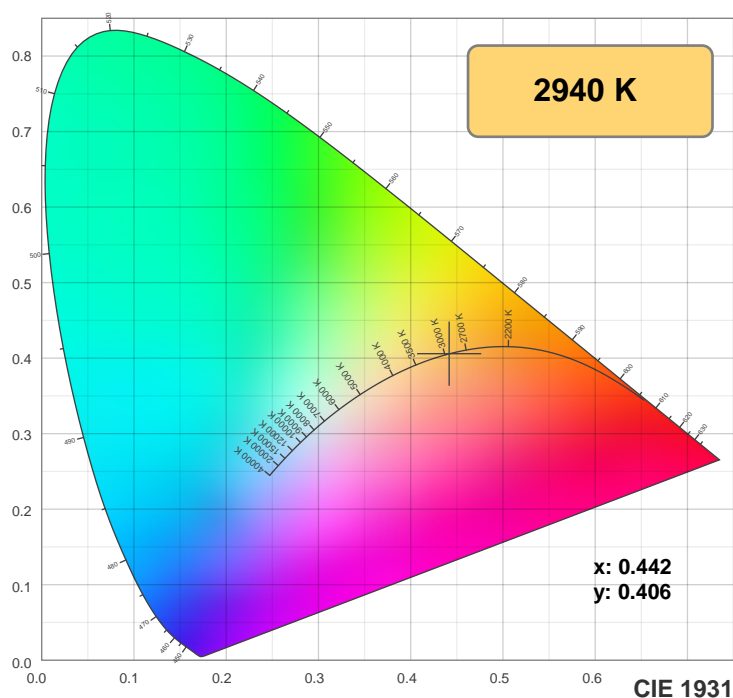
Spectra



Power

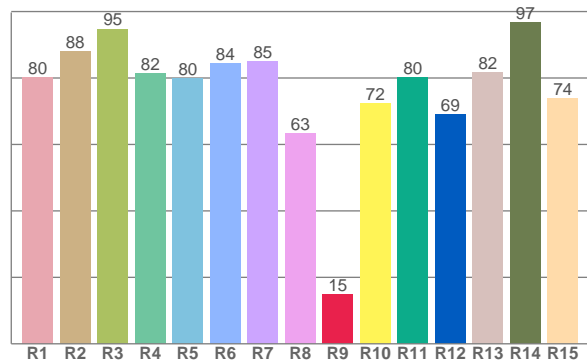
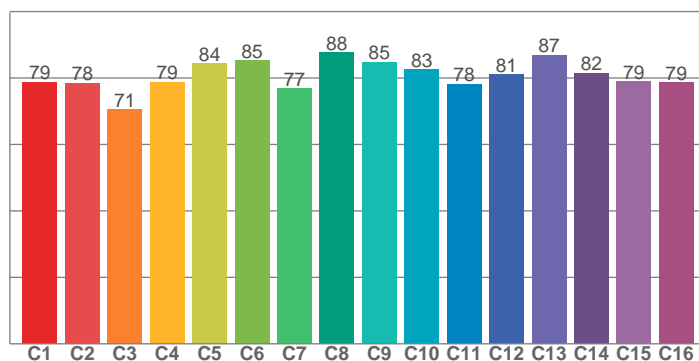


## Color details



TM30: 80.6

CRI: 82.1 (R1-R8)



CRI R values, only R1-R8 are used to calculate final CRI value

R1	R2	R3	R4	R5	R6	R7	R8	R9	R10	R11	R12	R13	R14	R15
80.3	88.0	94.8	81.5	79.8	84.3	85.0	63.4	14.9	72.4	80.3	69.0	81.6	96.8	73.9

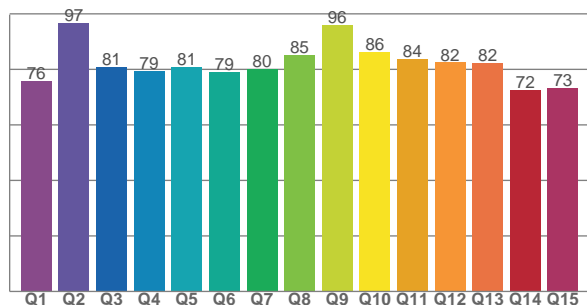
TM30 C values, 16 binned values out of total of 99 C values

C1	C2	C3	C4	C5	C6	C7	C8	C9	C10	C11	C12	C13	C14	C15	C16
78.8	78.5	70.6	78.8	84.4	85.3	76.8	87.6	84.8	82.6	78.2	81.1	86.9	81.5	78.9	78.6

CQS Q values

Q1	Q2	Q3	Q4	Q5	Q6	Q7	Q8	Q9	Q10	Q11	Q12	Q13	Q14	Q15
75.8	96.6	80.8	79.3	80.9	79.0	80.2	85.0	96.1	86.3	83.9	82.5	82.4	72.5	73.4

CQS: 81.0



## Color parameters

Color temperature	Color rendering index	Red component	Color fidelity	Color gamut	Color quality scale	Color coordinate cie 1931	Color coordinate cie 1931	Color coordinate	Color coordinate	Color deviation from black body
CCT	CRI	CRI R9	TM30 Rf	TM30 Rg	CQS	x	y	u	v	Δuv
2940 K	82.1	14.9	80.6	99.1	81.0	0.442	0.406	0.253	0.349	0.0002

## TM30 details

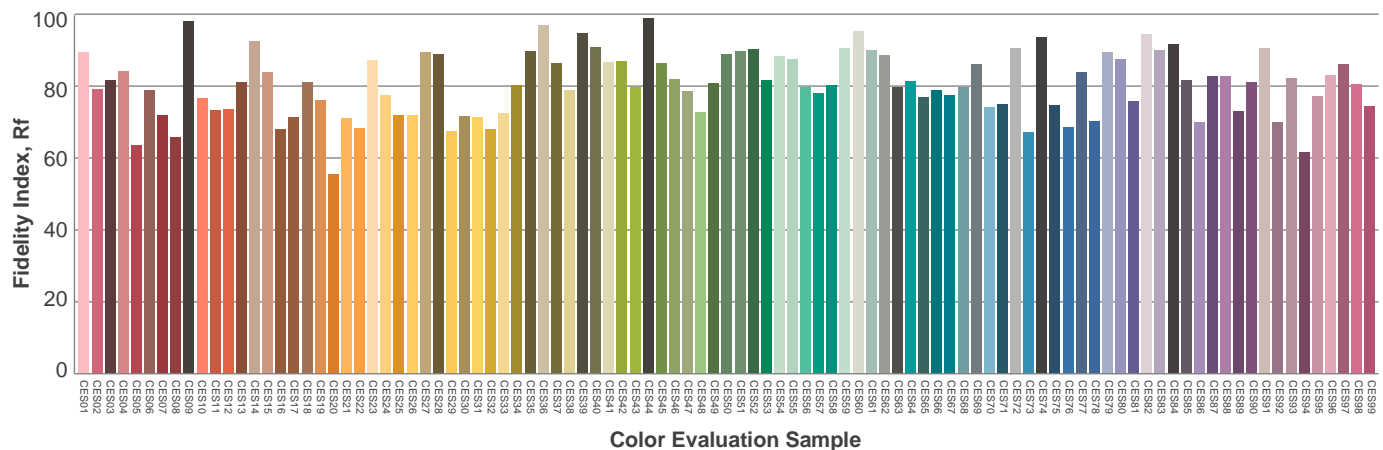
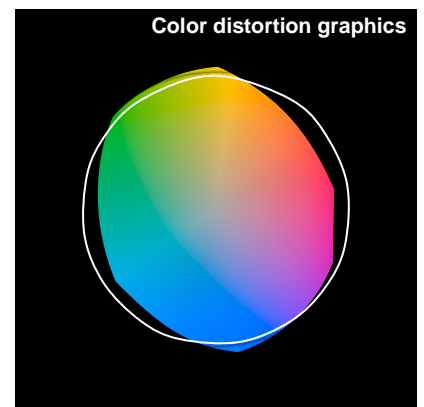
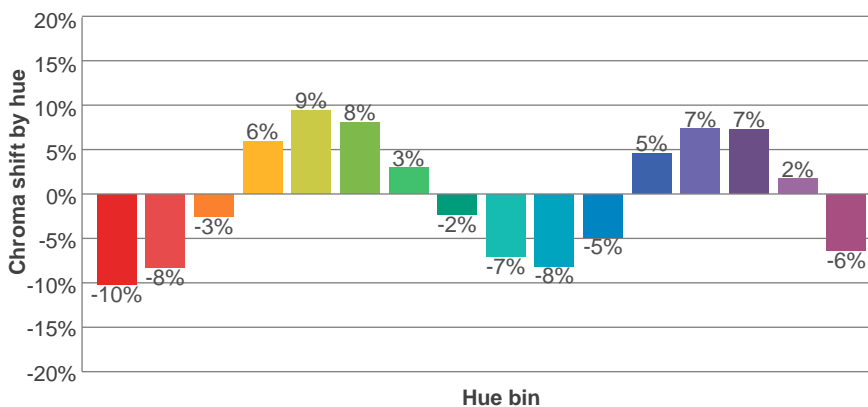
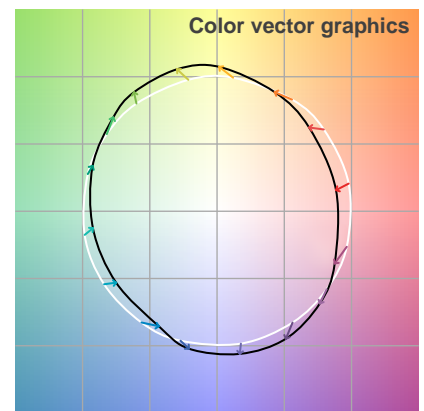
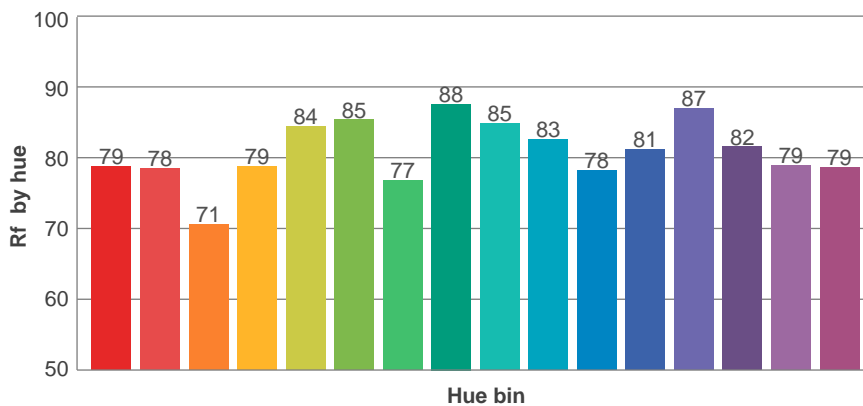
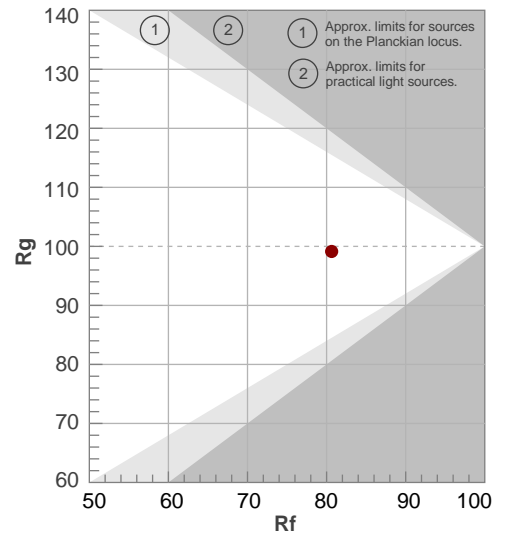
**Rf 80.6**

Fidelity index Rf

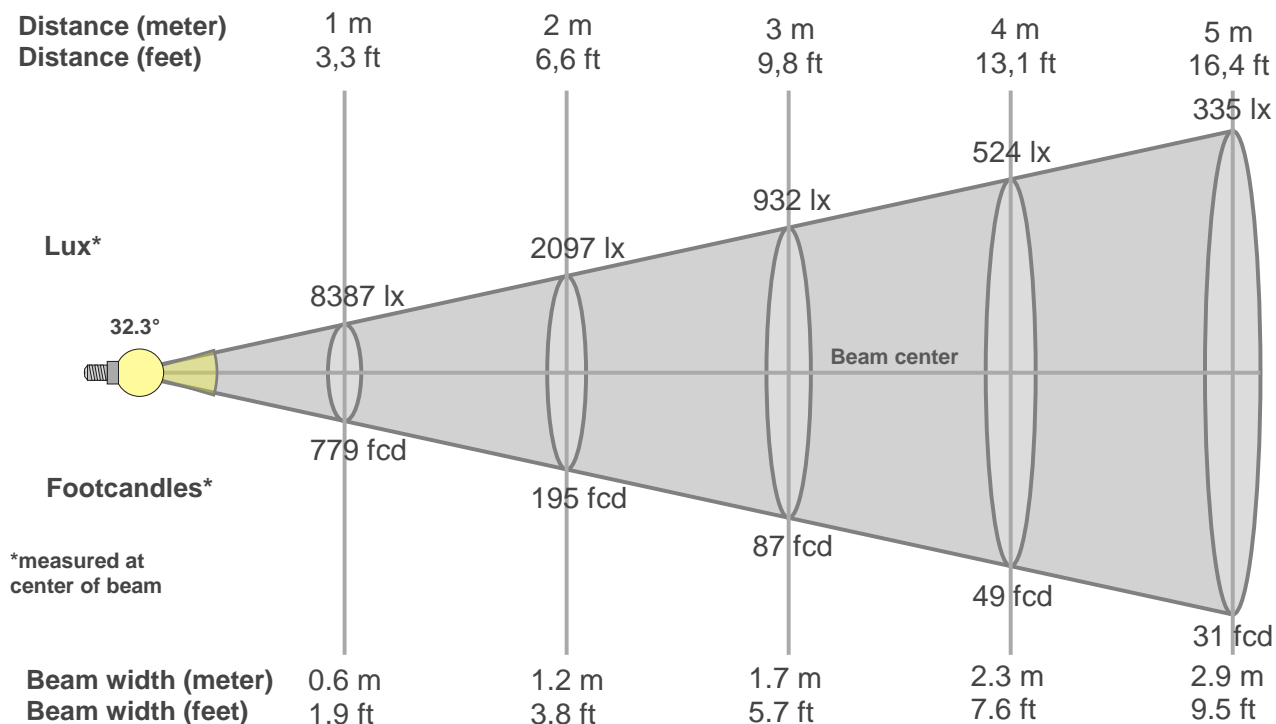
**Rg 99.1**

Gamut index Rg

Hue Bin	R <sub>f</sub>	Graphic shifts (%)	
		Chroma	Hue
1	79	-10%	-3%
2	78	-8%	7%
3	71	-3%	14%
4	79	6%	12%
5	84	9%	7%
6	85	8%	-3%
7	77	3%	-13%
8	88	-2%	-7%
9	85	-7%	-4%
10	83	-8%	4%
11	78	-5%	12%
12	81	5%	7%
13	87	7%	-2%
14	82	7%	-11%
15	79	2%	-12%
16	79	-6%	-14%



## Beam details



### Beam intensities from 1-20m

1m	2m	3m	4m	5m	6m	7m	8m	9m	10m	11m	12m	13m	14m	15m	16m	17m	18m	19m	20m
3.3ft	6.6ft	9.8ft	13.1ft	16.4ft	19.7ft	23ft	26.2ft	29.5ft	32.8ft	36.1ft	39.4ft	42.7ft	45.9ft	49.2ft	52.5ft	55.8ft	59.1ft	62.3ft	65.6ft
8387lx	2097lx	932lx	524lx	335lx	233lx	171lx	131lx	104lx	84lx	69lx	58lx	50lx	43lx	37lx	33lx	29lx	26lx	23lx	21lx
779.2fc	194.8fc	86.6fcd	48.7fcd	31.2fcd	21.6fcd	15.9fcd	12.2fcd	9.6fcd	7.8fcd	6.4fcd	5.4fcd	4.6fcd	4fcd	3.5fcd	3fcd	2.7fcd	2.4fcd	2.2fcd	1.9fcd

### Intensities in 0° c-plane

0°	2°	4°	6°	8°	10°	12°	14°	16°	18°	20°	22°	24°	26°	28°	30°	32°	34°	36°	38°
8387	8342	8141	7755	7370	6605	5833	5052	4265	3485	2952	2420	2001	1675	1352	1071	790	565	379	210
100%	99%	97%	92%	88%	79%	70%	60%	51%	42%	35%	29%	24%	20%	16%	13%	9%	7%	5%	2%

### Intensities in 90° c-plane

0°	2°	4°	6°	8°	10°	12°	14°	16°	18°	20°	22°	24°	26°	28°	30°	32°	34°	36°	38°
8387	8400	8134	7841	7360	6641	5923	5101	4275	3560	2963	2367	2009	1651	1326	1031	741	536	331	209
100%	100%	97%	93%	88%	79%	71%	61%	51%	42%	35%	28%	24%	20%	16%	12%	9%	6%	4%	2%

### Intensities in 180° c-plane

0°	2°	4°	6°	8°	10°	12°	14°	16°	18°	20°	22°	24°	26°	28°	30°	32°	34°	36°	38°
8387	8405	8141	7876	7357	6656	5941	5105	4268	3563	2934	2347	1987	1627	1318	1034	764	552	339	229
100%	100%	97%	94%	88%	79%	71%	61%	51%	42%	35%	28%	24%	19%	16%	12%	9%	7%	4%	3%

### Intensities in 270° c-plane

0°	2°	4°	6°	8°	10°	12°	14°	16°	18°	20°	22°	24°	26°	28°	30°	32°	34°	36°	38°
8387	8373	8155	7801	7394	6627	5861	5073	4273	3515	2955	2395	1994	1662	1343	1070	797	581	385	226
100%	100%	97%	93%	88%	79%	70%	60%	51%	42%	35%	29%	24%	20%	16%	13%	9%	7%	5%	3%

Beam angle 50%	Field angle 10%	Cutoff angle 2,5%	Intensity ratio in 120° cone	Intensity ratio in 90° cone
32.3°	63°	76.6°	98.4%	95.7%