

Light efficiency:

68 Lumen/Watt

Light quality:

CRI: 79.8

Color temperature:

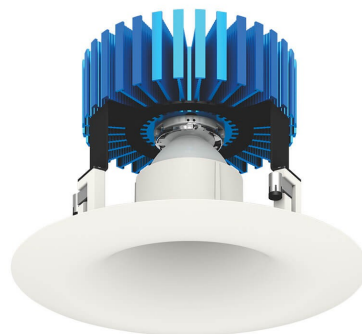
2935 K

Output: 3515 lm

Peak: 4162 cd

Power: 51.5 W

PF: 1.0

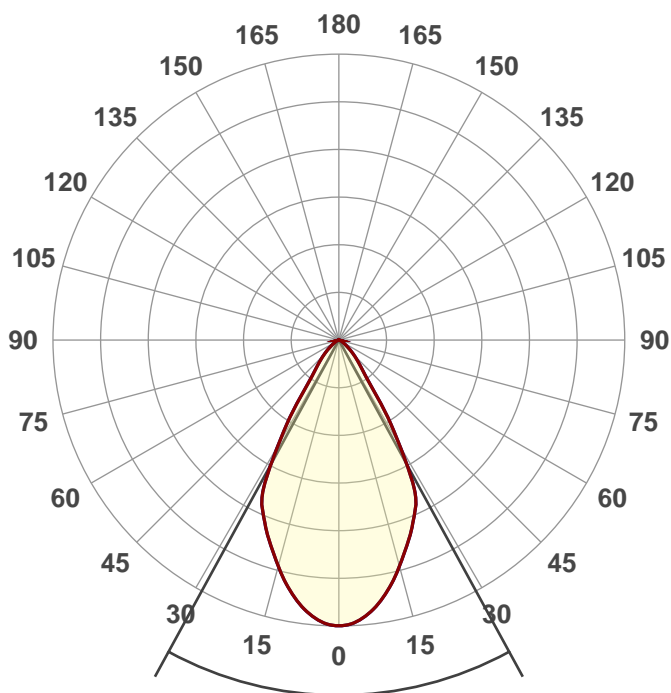


Product name:

621-6INV-XTM19-50LM-30K-83-  
DA60-120-DIM10-NC

Date and time:

1/26/2018 2:00:08 PM



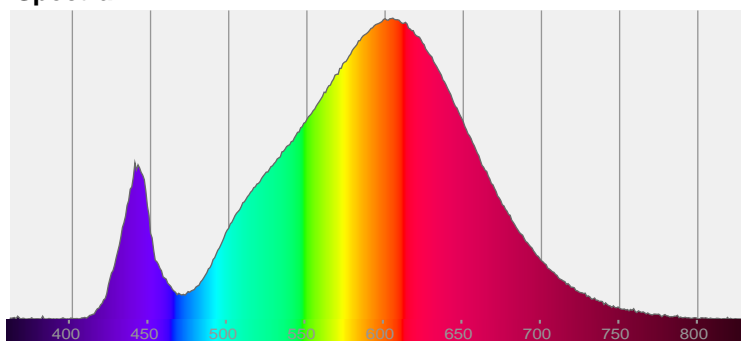
Beam angle

57.3°

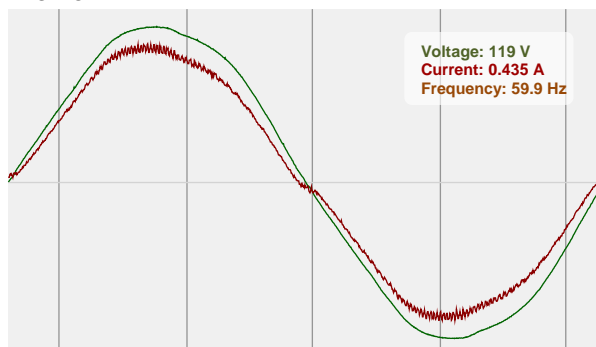


CIE 1931  
x: 0.446  
y: 0.413

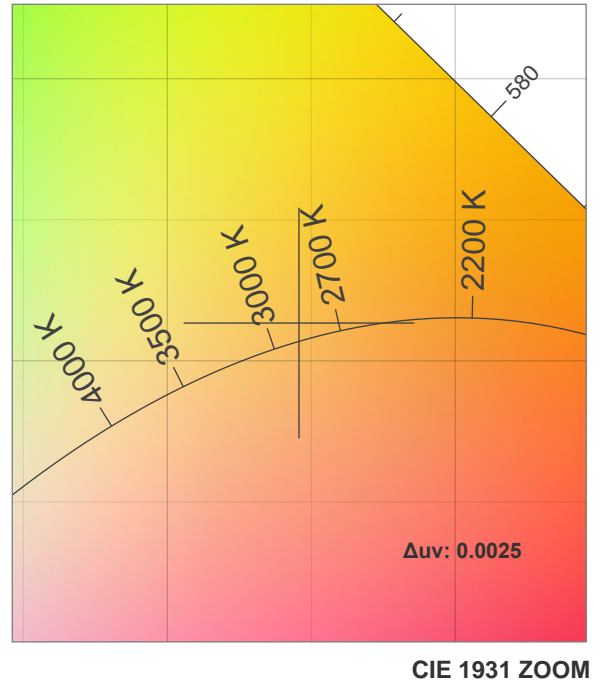
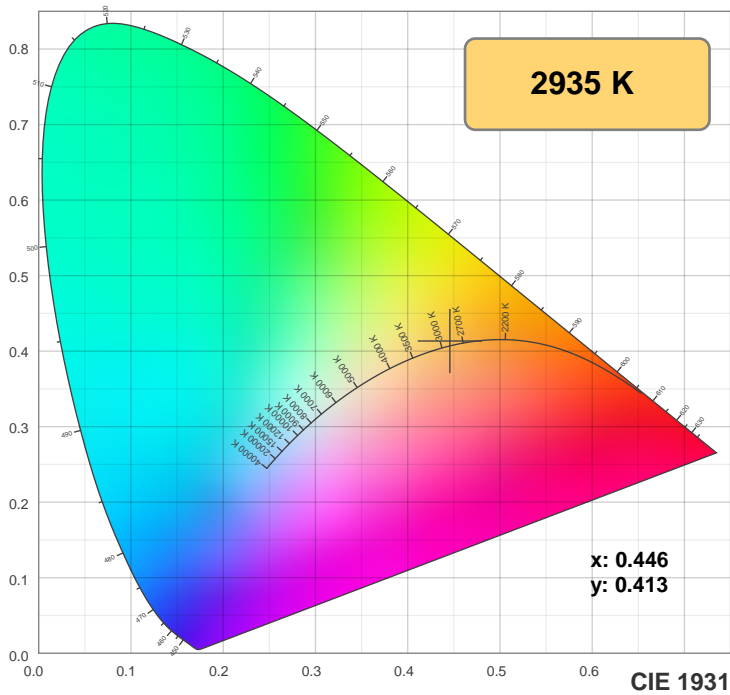
Spectra



Power

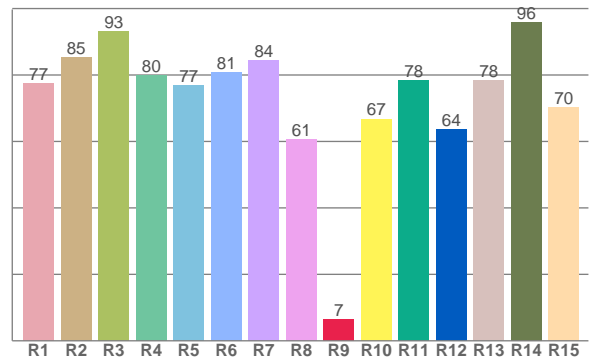
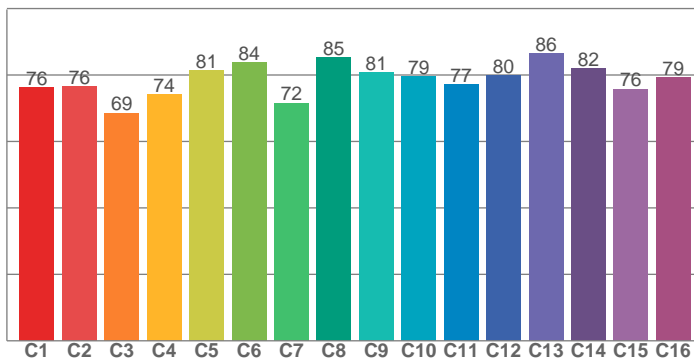


## Color details



TM30: 78.3

CRI: 79.8 (R1-R8)



CRI R values, only R1-R8 are used to calculate final CRI value

R1	R2	R3	R4	R5	R6	R7	R8	R9	R10	R11	R12	R13	R14	R15
77.5	85.3	93.2	79.9	76.8	80.7	84.5	60.6	6.6	66.8	78.3	63.7	78.5	95.8	70.3

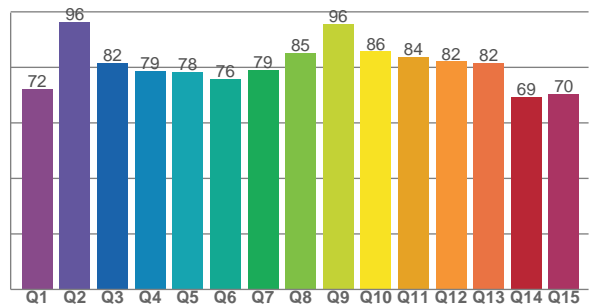
TM30 C values, 16 binned values out of total of 99 C values

C1	C2	C3	C4	C5	C6	C7	C8	C9	C10	C11	C12	C13	C14	C15	C16
76.3	76.5	68.6	74.1	81.4	83.8	71.5	85.2	80.7	79.5	77.2	79.8	86.4	82.0	75.8	79.3

CQS Q values

Q1	Q2	Q3	Q4	Q5	Q6	Q7	Q8	Q9	Q10	Q11	Q12	Q13	Q14	Q15
72.3	96.5	81.6	78.6	78.3	75.9	79.2	85.3	95.8	85.7	83.7	82.1	81.5	69.3	70.4

CQS: 79.5



## Color parameters

Color temperature	Color rendering index	Red component	Color fidelity	Color gamut	Color quality scale	Color coordinate cie 1931	Color coordinate cie 1931	Color coordinate	Color coordinate	Color deviation from black body
CCT	CRI	CRI R9	TM30 Rf	TM30 Rg	CQS	x	y	u	v	Δuv
2935 K	79.8	6.6	78.3	98.4	79.5	0.446	0.413	0.252	0.351	0.0025

## TM30 details

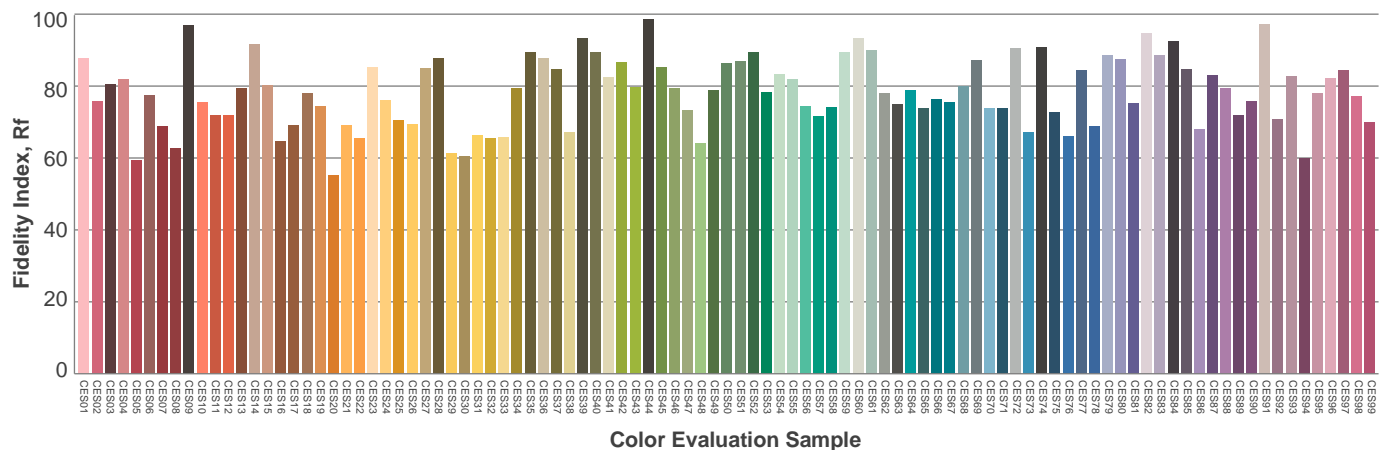
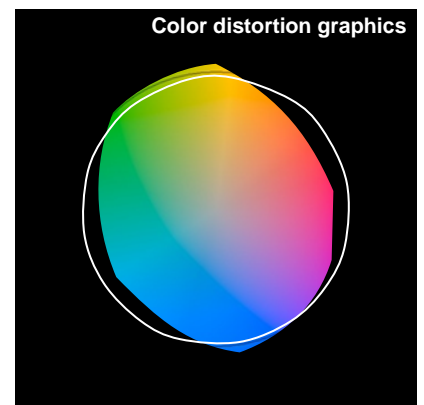
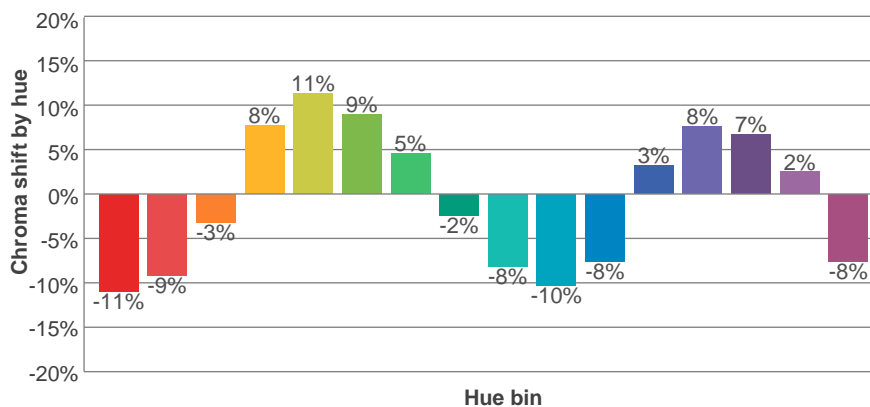
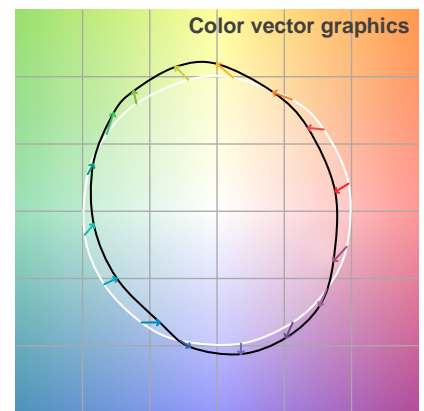
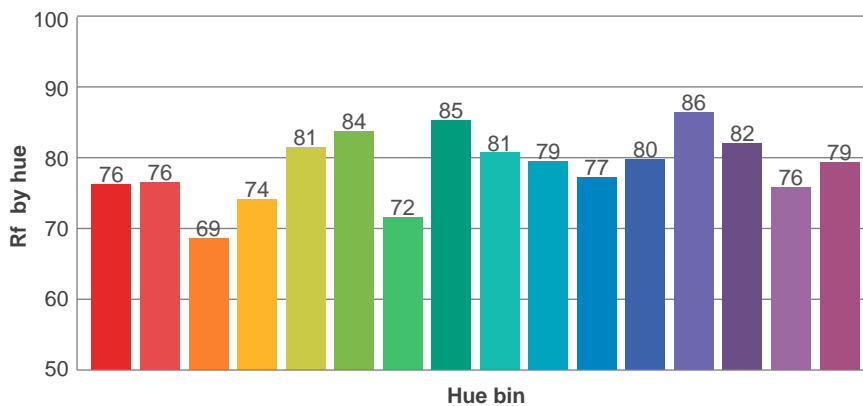
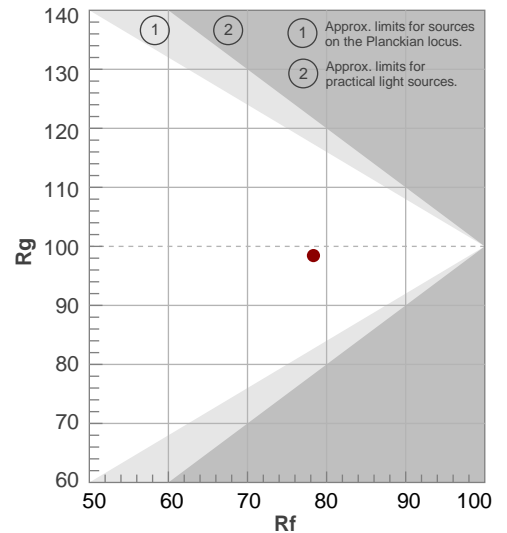
**Rf 78.3**

Fidelity index Rf

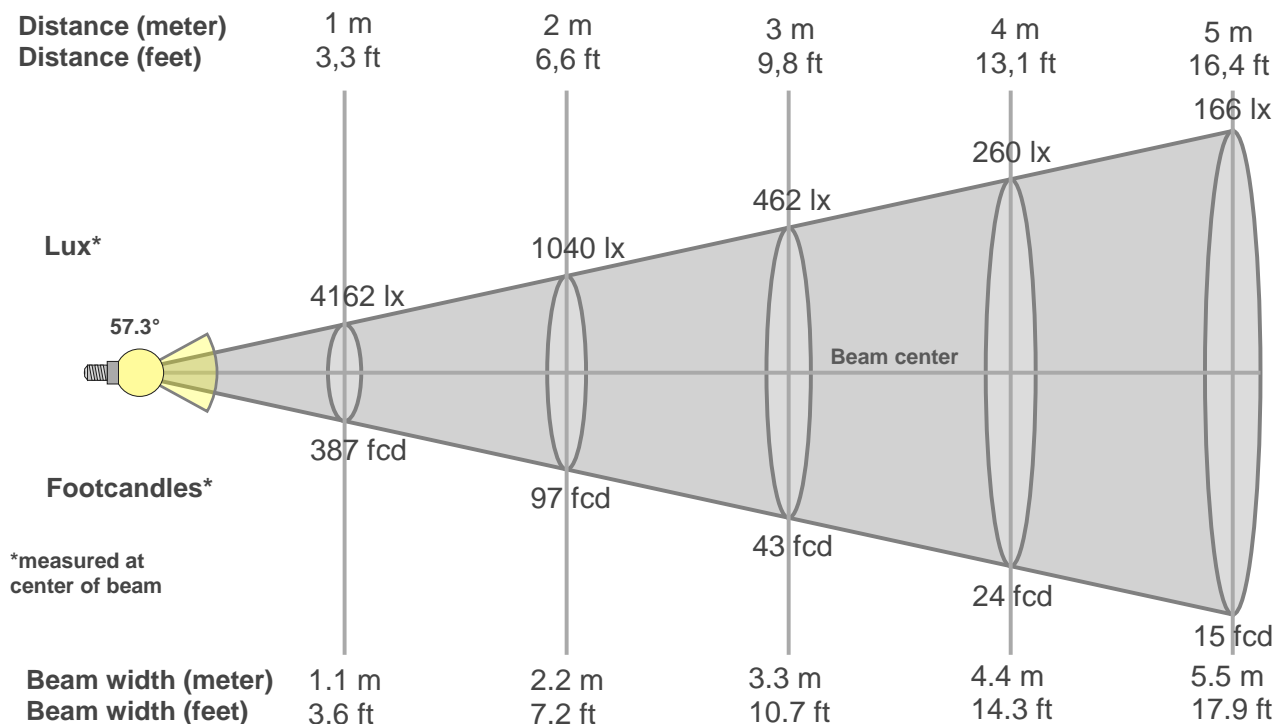
**Rg 98.4**

Gammut index Rg

Hue Bin	R <sub>f</sub>	Graphic shifts (%)	
		Chroma	Hue
1	76	-11%	-4%
2	76	-9%	8%
3	69	-3%	15%
4	74	8%	14%
5	81	11%	8%
6	84	9%	-3%
7	72	5%	-16%
8	85	-2%	-8%
9	81	-8%	-6%
10	79	-10%	2%
11	77	-8%	11%
12	80	3%	8%
13	86	8%	-2%
14	82	7%	-10%
15	76	2%	-13%
16	79	-8%	-12%



## Beam details



### Beam intensities from 1-20m

1m	2m	3m	4m	5m	6m	7m	8m	9m	10m	11m	12m	13m	14m	15m	16m	17m	18m	19m	20m
3.3ft	6.6ft	9.8ft	13.1ft	16.4ft	19.7ft	23ft	26.2ft	29.5ft	32.8ft	36.1ft	39.4ft	42.7ft	45.9ft	49.2ft	52.5ft	55.8ft	59.1ft	62.3ft	65.6ft
4162lx	1040lx	462lx	260lx	166lx	116lx	85lx	65lx	51lx	42lx	34lx	29lx	25lx	21lx	18lx	16lx	14lx	13lx	12lx	10lx
386.6fc	96.7fcd	43fcd	24.2fcd	15.5fcd	10.7fcd	7.9fcd	6fcd	4.8fcd	3.9fcd	3.2fcd	2.7fcd	2.3fcd	2fcd	1.7fcd	1.5fcd	1.3fcd	1.2fcd	1.1fcd	1fcd

### Intensities in 0° c-plane

0°	2°	4°	6°	8°	10°	12°	14°	16°	18°	20°	22°	24°	26°	28°	30°	32°	34°	36°	38°
4162	4162	4101	4024	3929	3796	3664	3508	3348	3192	3042	2890	2708	2526	2214	1806	1410	1083	757	593
100%	100%	99%	97%	94%	91%	88%	84%	80%	77%	73%	69%	65%	61%	53%	43%	34%	26%	18%	14%

### Intensities in 90° c-plane

0°	2°	4°	6°	8°	10°	12°	14°	16°	18°	20°	22°	24°	26°	28°	30°	32°	34°	36°	38°
4162	4162	4101	4024	3929	3796	3664	3508	3348	3192	3042	2890	2708	2526	2214	1806	1410	1083	757	593
100%	100%	99%	97%	94%	91%	88%	84%	80%	77%	73%	69%	65%	61%	53%	43%	34%	26%	18%	14%

### Intensities in 180° c-plane

0°	2°	4°	6°	8°	10°	12°	14°	16°	18°	20°	22°	24°	26°	28°	30°	32°	34°	36°	38°
4162	4162	4101	4024	3929	3796	3664	3508	3348	3192	3042	2890	2708	2526	2214	1806	1410	1083	757	593
100%	100%	99%	97%	94%	91%	88%	84%	80%	77%	73%	69%	65%	61%	53%	43%	34%	26%	18%	14%

### Intensities in 270° c-plane

0°	2°	4°	6°	8°	10°	12°	14°	16°	18°	20°	22°	24°	26°	28°	30°	32°	34°	36°	38°
4162	4162	4101	4024	3929	3796	3664	3508	3348	3192	3042	2890	2708	2526	2214	1806	1410	1083	757	593
100%	100%	99%	97%	94%	91%	88%	84%	80%	77%	73%	69%	65%	61%	53%	43%	34%	26%	18%	14%

Beam angle 50%	Field angle 10%	Cutoff angle 2,5%	Intensity ratio in 120° cone	Intensity ratio in 90° cone
57.3°	83.8°	111.7°	98.6%	92.7%