

Light efficiency:

61 Lumen/Watt

Light quality:

CRI: 79.7

Color temperature:

2985 K

Output: 3086 lm

Peak: 3858 cd

Power: 50.4 W

PF: 1.0



Beam angle

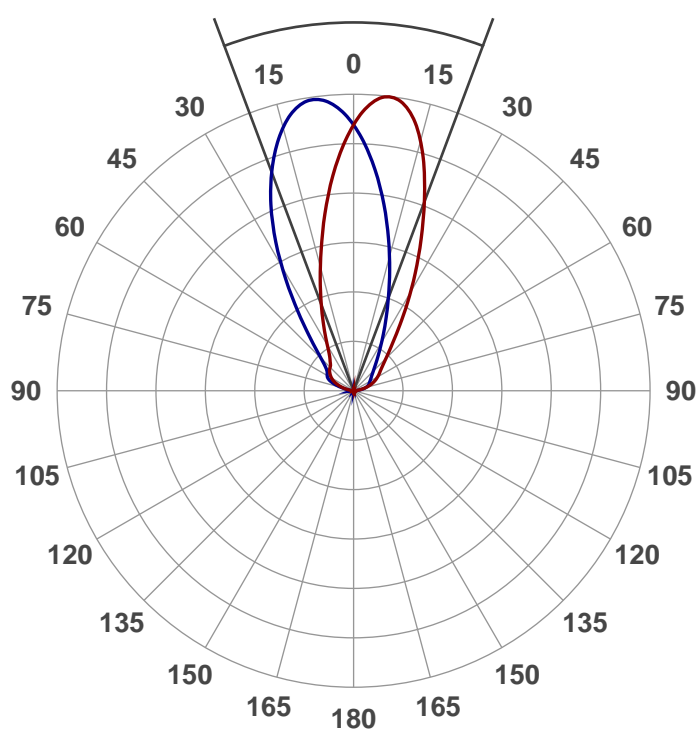
41.1°

Product name:

622-4-XTM19-40LM-30K-83-WW

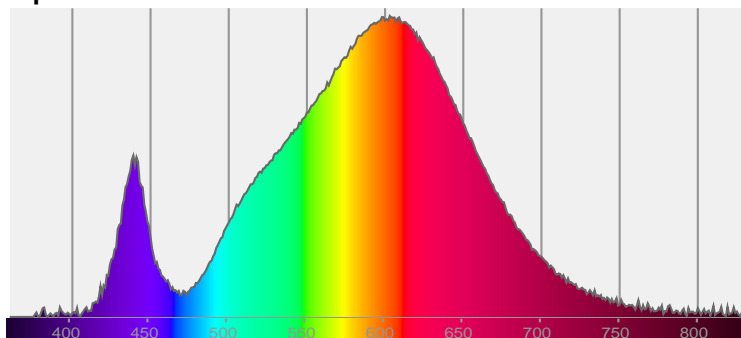
Date and time:

7/11/2016 3:51:11 PM

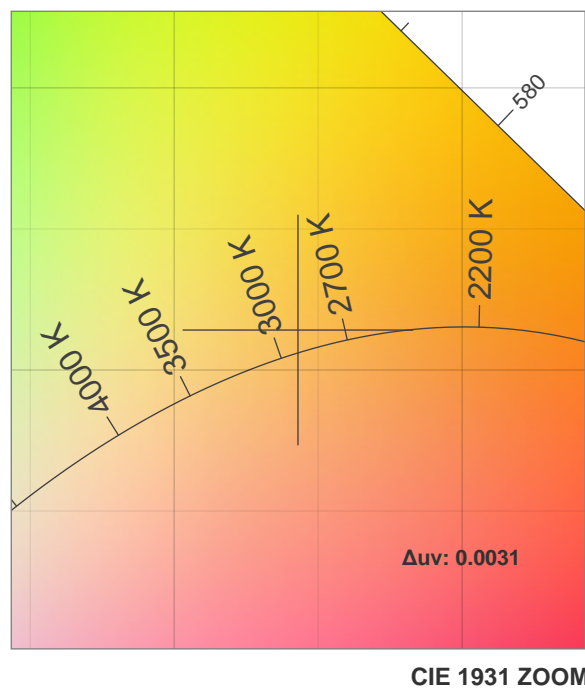
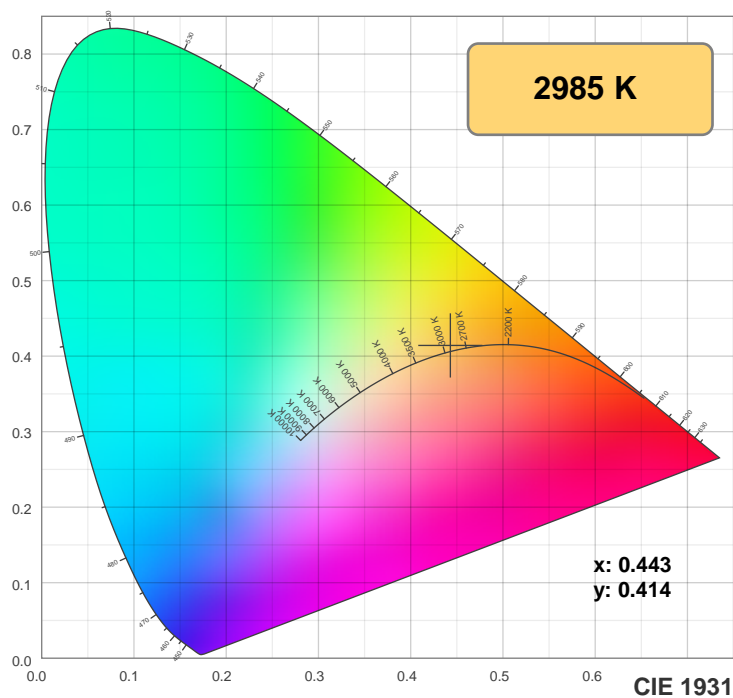


CIE 1931
x: 0.443
y: 0.414

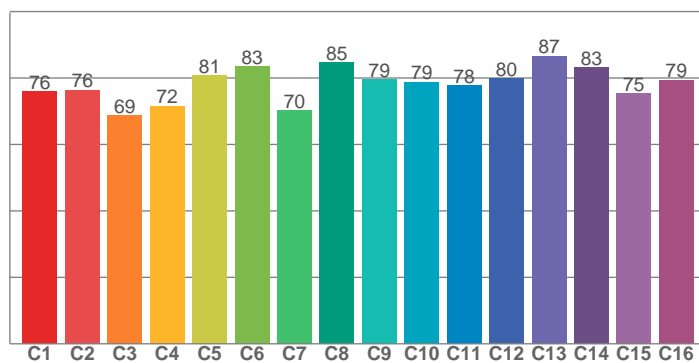
Spectra



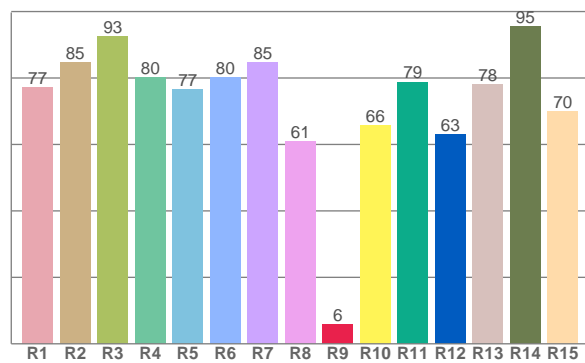
Color details



TM30: 77.9



CRI: 79.7 (R1-R8)



CRI R values, only R1-R8 are used to calculate final CRI value

R1	R2	R3	R4	R5	R6	R7	R8	R9	R10	R11	R12	R13	R14	R15
77.3	84.8	92.6	80.2	76.7	80.2	84.6	60.8	5.9	65.8	78.9	63.1	78.2	95.5	69.9

TM30 C values, 16 binned values out of total of 99 C values

C1	C2	C3	C4	C5	C6	C7	C8	C9	C10	C11	C12	C13	C14	C15	C16
76.0	76.4	68.7	71.6	80.7	83.4	70.1	84.7	79.5	78.8	77.8	79.8	86.6	83.1	75.3	79.4

Color parameters

Color temperature	Color rendering index	Red component	Color fidelity	Color gamut	Color coordinate cie 1931	Color coordinate cie 1931	Color coordinate	Color coordinate	Color deviation from black body
CCT	CRI	CRI R9	TM30 Rf	TM30 Rg	x	y	u	v	Δuv
2985 K	79.7	5.9	77.9	98.4	0.443	0.414	0.250	0.351	0.0031

TM30 details

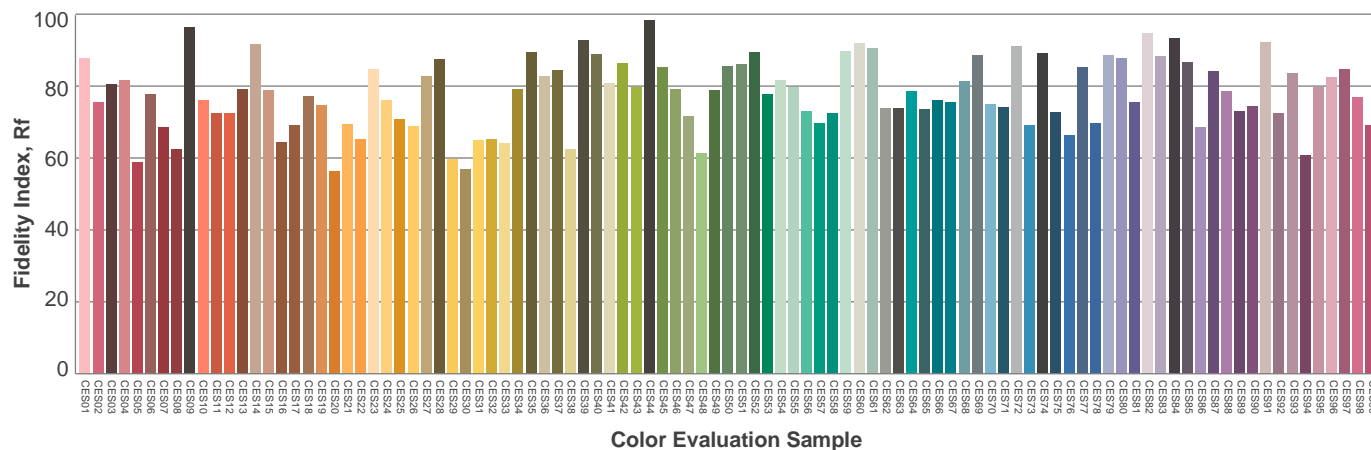
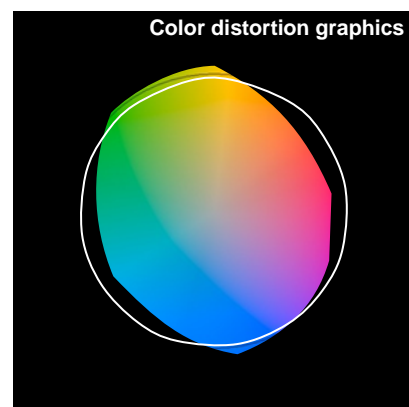
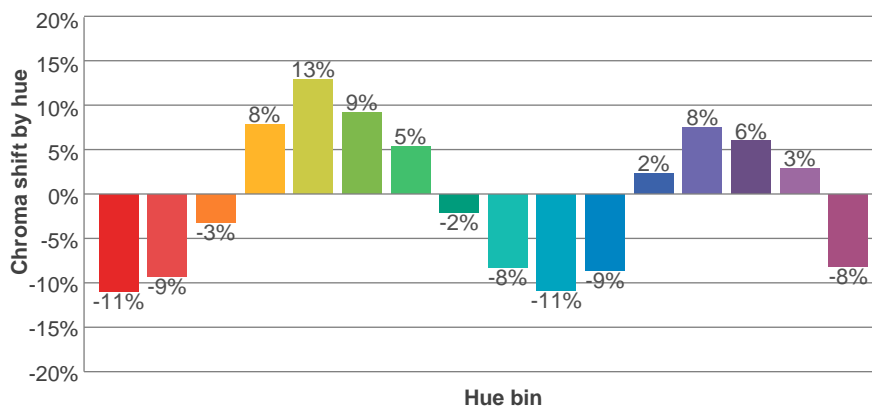
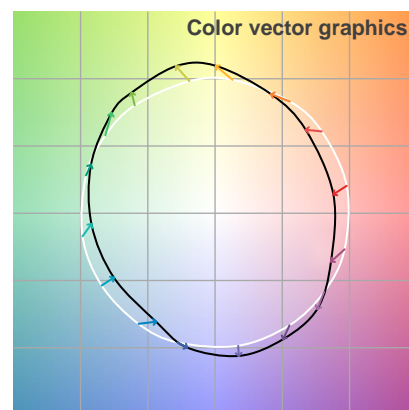
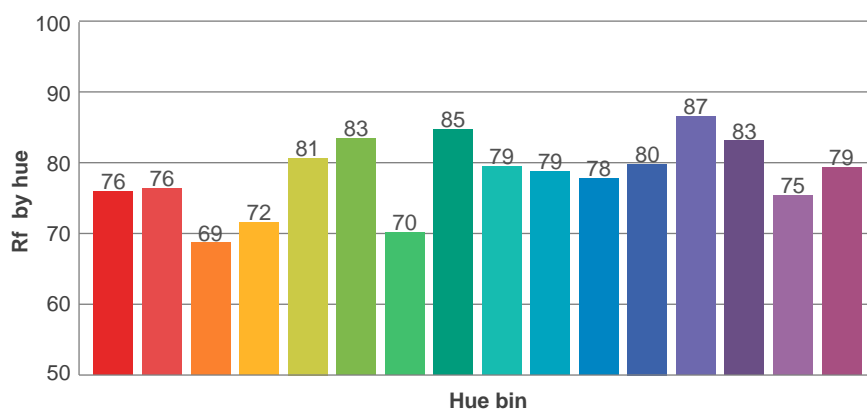
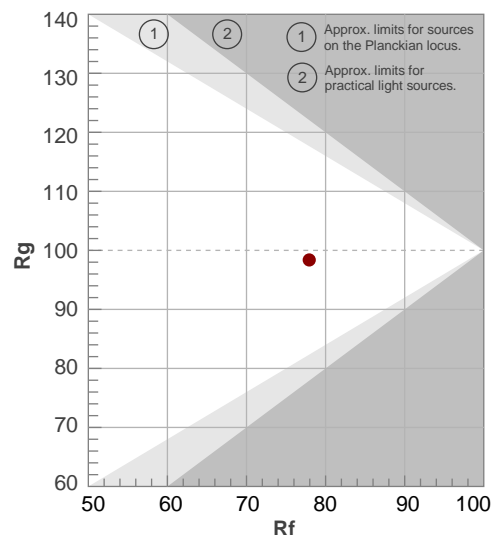
Rf 77.9

Fidelity index Rf

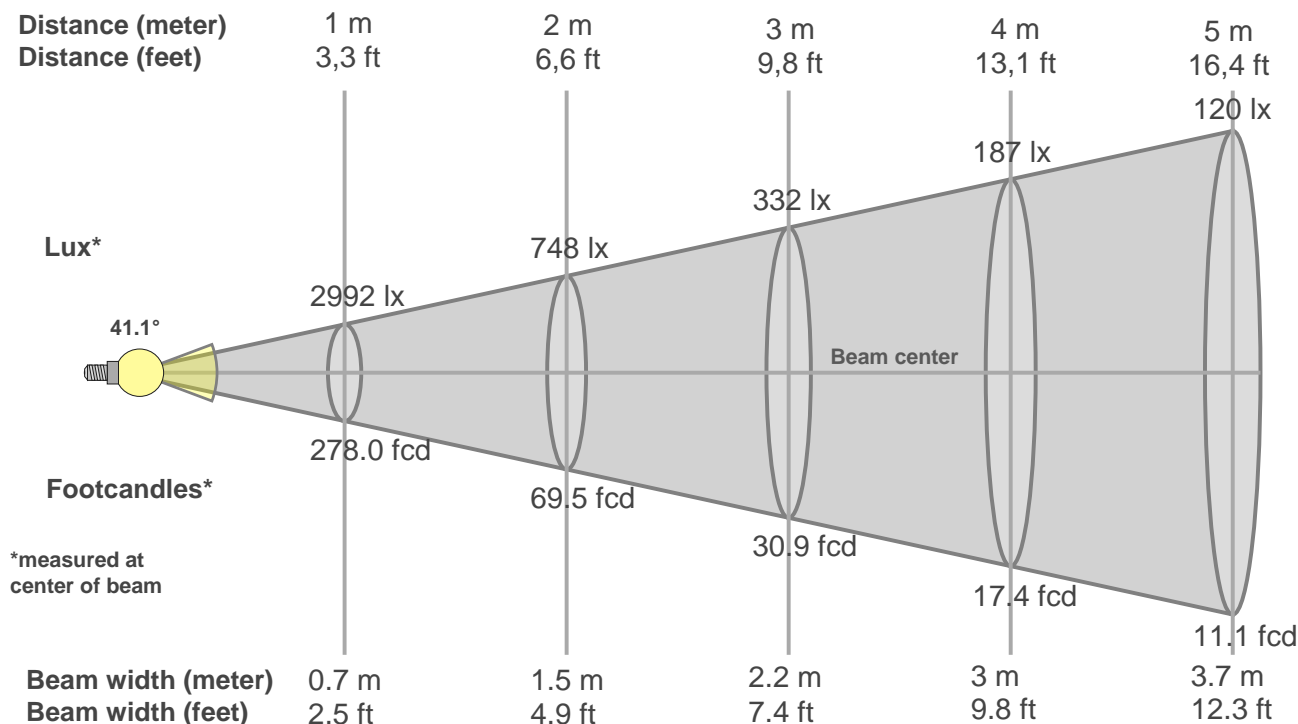
Rg 98.4

Gammut index Rg

Hue Bin	R _f	Graphic shifts (%)	
		Chroma	Hue
1	76	-11%	-4%
2	76	-9%	8%
3	69	-3%	15%
4	72	8%	14%
5	81	13%	8%
6	83	9%	-3%
7	70	5%	-16%
8	85	-2%	-9%
9	79	-8%	-8%
10	79	-11%	0%
11	78	-9%	10%
12	80	2%	8%
13	87	8%	-1%
14	83	6%	-10%
15	75	3%	-13%
16	79	-8%	-11%



Beam details



Beam intensities from 1-20m

1m	2m	3m	4m	5m	6m	7m	8m	9m	10m	11m	12m	13m	14m	15m	16m	17m	18m	19m	20m
3.3ft	6.6ft	9.8ft	13.1ft	16.4ft	19.7ft	23ft	26.2ft	29.5ft	32.8ft	36.1ft	39.4ft	42.7ft	45.9ft	49.2ft	52.5ft	55.8ft	59.1ft	62.3ft	65.6ft
2992lx	748lx	332lx	187lx	120lx	83lx	61lx	47lx	37lx	30lx	25lx	21lx	18lx	15lx	13lx	12lx	10lx	9lx	8lx	7lx
278fcd	69.5fcd	30.9fcd	17.4fcd	11.1fcd	7.7fcd	5.7fcd	4.3fcd	3.4fcd	2.8fcd	2.3fcd	1.9fcd	1.6fcd	1.4fcd	1.2fcd	1.1fcd	1fcd	0.9fcd	0.8fcd	0.7fcd

Intensities in 0° c-plane

0°	5°	10°	15°	20°	25°	30°	35°	40°	45°	50°	55°	60°	65°	70°	75°	80°	85°	90°	95°
2992	2496	1943	1458	1077	798	598	471	411	376	355	324	287	241	180	115	55	15	6	7
100%	83%	65%	49%	36%	27%	20%	16%	14%	13%	12%	11%	10%	8%	6%	4%	2%	1%	0%	0%

Intensities in 90° c-plane

0°	5°	10°	15°	20°	25°	30°	35°	40°	45°	50°	55°	60°	65°	70°	75°	80°	85°	90°	95°
2992	3266	3290	3068	2685	2186	1625	1102	746	529	413	366	344	313	243	148	64	16	6	25
100%	109%	110%	103%	90%	73%	54%	37%	25%	18%	14%	12%	12%	10%	8%	5%	2%	1%	0%	1%

Intensities in 180° c-plane

0°	5°	10°	15°	20°	25°	30°	35°	40°	45°	50°	55°	60°	65°	70°	75°	80°	85°	90°	95°
2992	3304	3270	2907	2344	1774	1295	917	674	521	421	361	313	264	209	146	83	33	9	6
100%	110%	109%	97%	78%	59%	43%	31%	23%	17%	14%	12%	10%	9%	7%	5%	3%	1%	0%	0%

Intensities in 270° c-plane

0°	5°	10°	15°	20°	25°	30°	35°	40°	45°	50°	55°	60°	65°	70°	75°	80°	85°	90°	95°
2992	2560	2057	1573	1159	856	638	485	385	316	269	238	214	194	173	143	97	41	8	3
100%	86%	69%	53%	39%	29%	21%	16%	13%	11%	9%	8%	7%	6%	6%	5%	3%	1%	0%	0%

Beam angle 50°	Field angle 10°	Cutoff angle 2,5°	Intensity ratio in 120° cone	Intensity ratio in 90° cone
41.1°	103.8°	157.3°	86.0%	71.7%