

Light efficiency:

79 Lumen/Watt

Light quality:

CRI: 80.7

Color temperature:

2963 K

Output: 3219 lm

Peak: 1729 cd

Power: 40.7 W

PF: 1.0



Beam angle

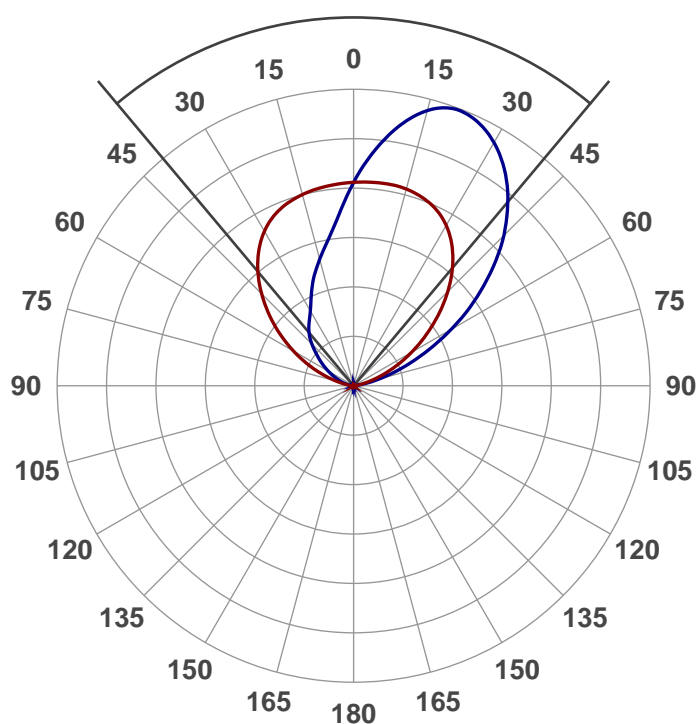
80°

Product name:

622-6-XTM19-50LM-30K-83-WW

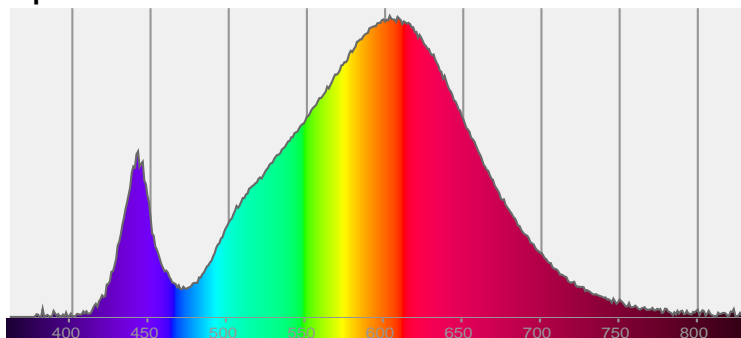
Date and time:

7/5/2016 2:50:48 PM

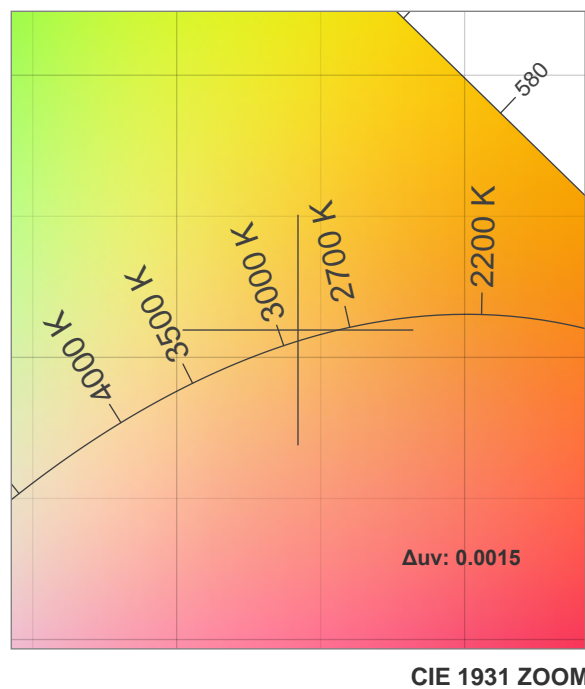
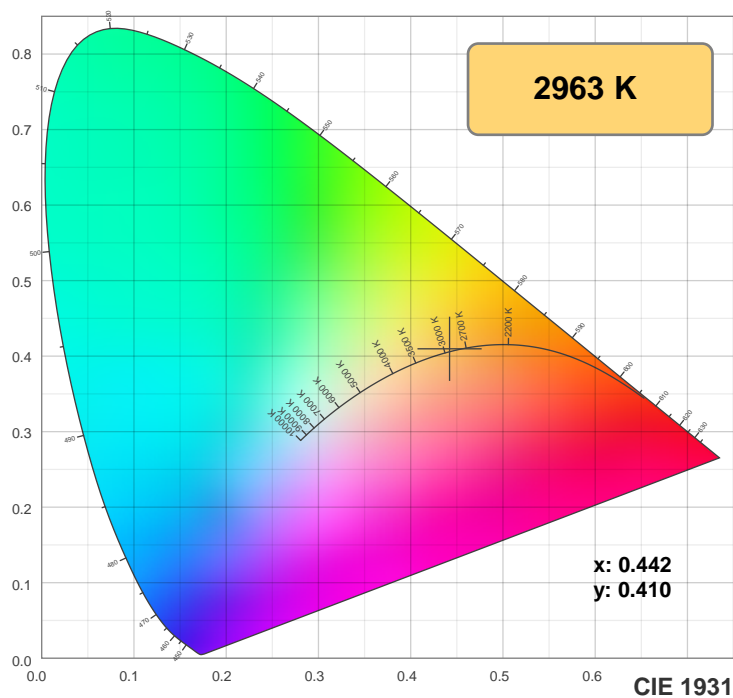


CIE 1931
x: 0.442
y: 0.410

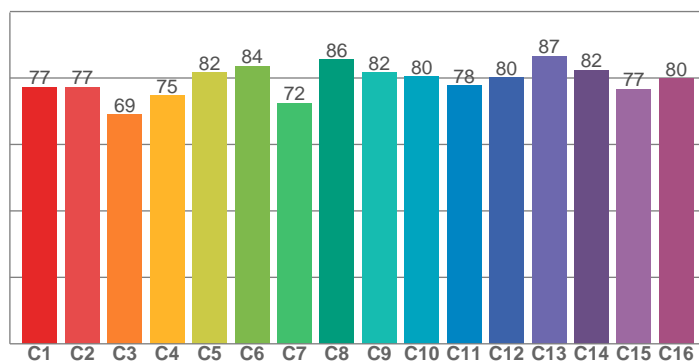
Spectra



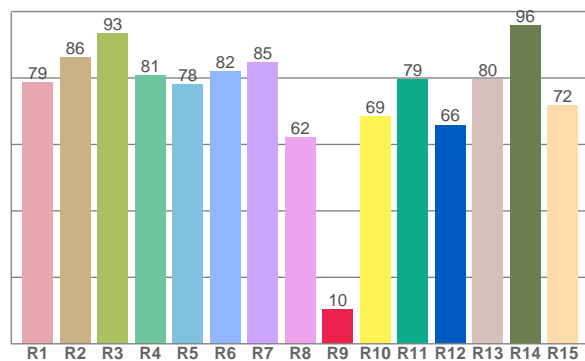
Color details



TM30: 78.9



CRI: 80.7 (R1-R8)



CRI R values, only R1-R8 are used to calculate final CRI value

R1	R2	R3	R4	R5	R6	R7	R8	R9	R10	R11	R12	R13	R14	R15
78.7	86.2	93.4	80.8	78.1	81.9	84.8	62.2	10.4	68.5	79.5	65.9	79.7	95.9	71.9

TM30 C values, 16 binned values out of total of 99 C values

C1	C2	C3	C4	C5	C6	C7	C8	C9	C10	C11	C12	C13	C14	C15	C16
77.3	77.3	69.0	74.7	81.6	83.7	72.4	85.6	81.7	80.4	77.8	80.1	86.6	82.4	76.7	79.9

Color parameters

Color temperature	Color rendering index	Red component	Color fidelity	Color gamut	Color coordinate cie 1931	Color coordinate cie 1931	Color coordinate	Color coordinate	Color deviation from black body
CCT	CRI	CRI R9	TM30 Rf	TM30 Rg	x	y	u	v	Δuv
2963 K	80.7	10.4	78.9	99.0	0.442	0.410	0.251	0.350	0.0015

TM30 details

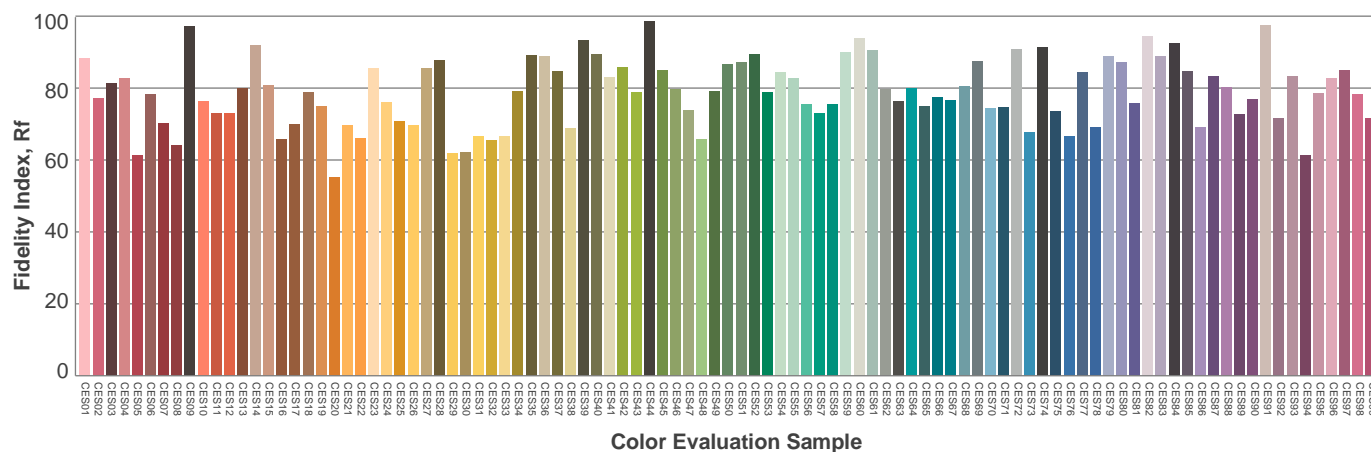
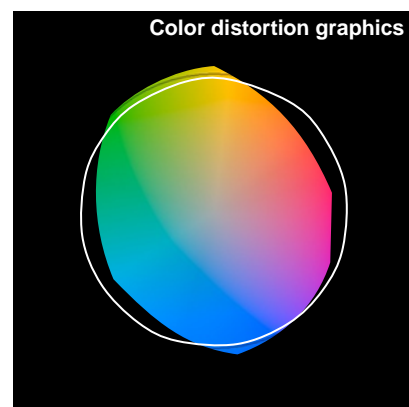
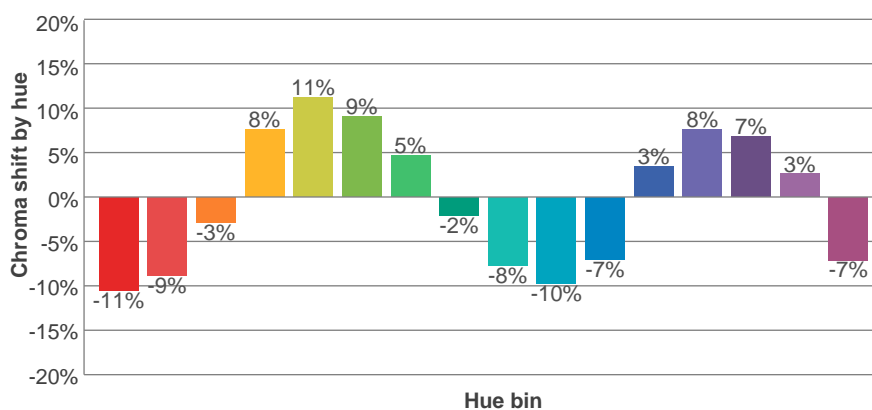
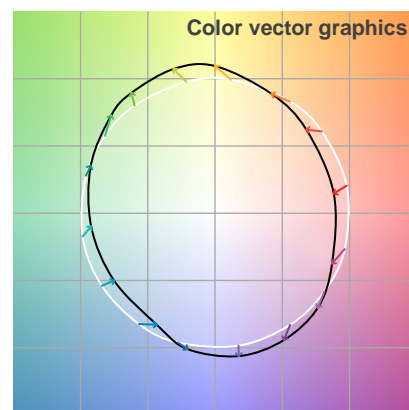
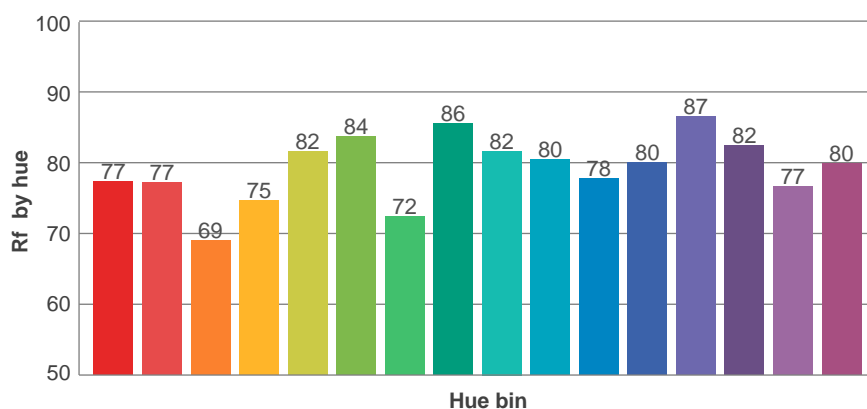
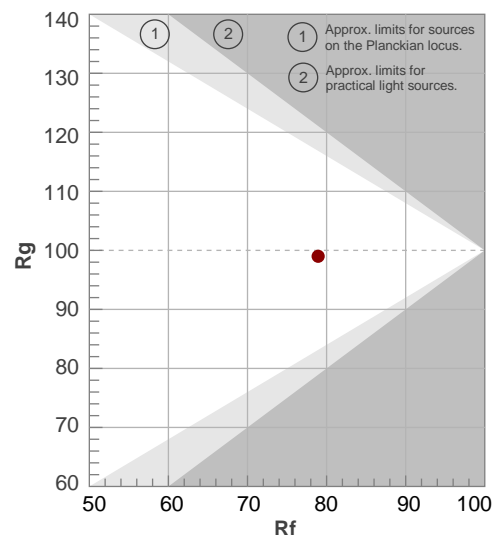
Rf 78.9

Fidelity index Rf

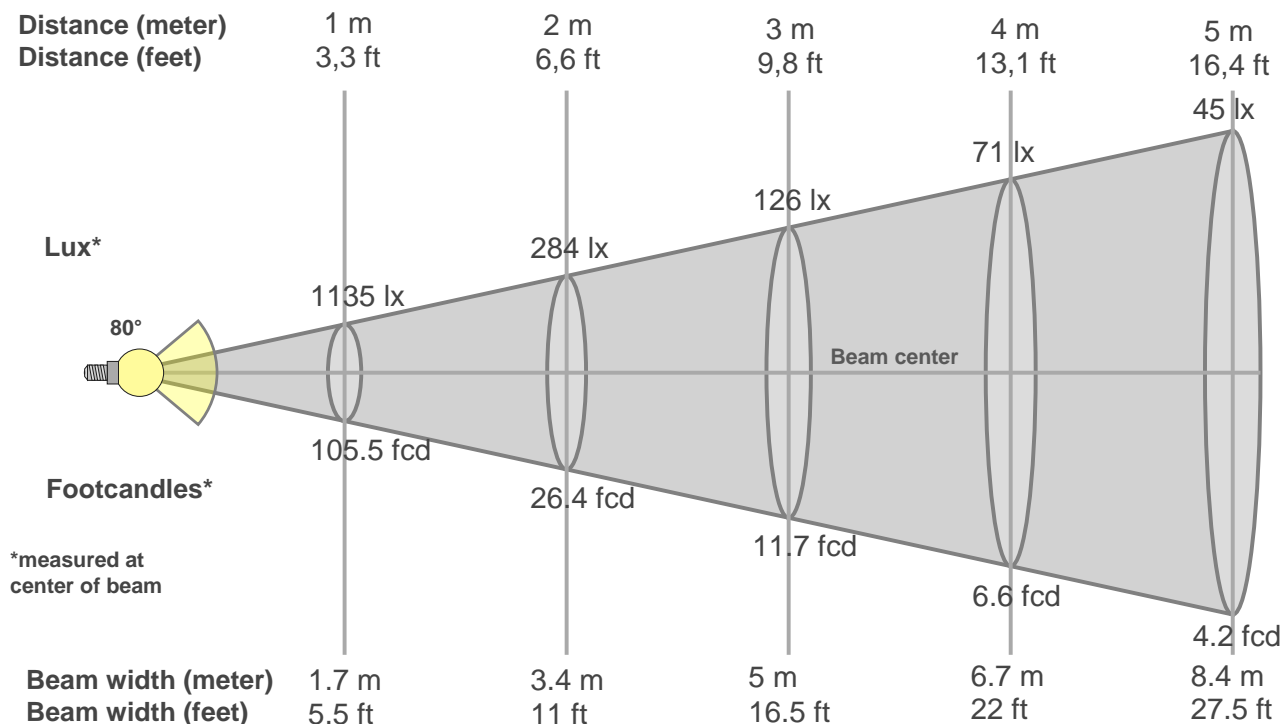
Rg 99.0

Gammut index Rg

Hue Bin	R _f	Graphic shifts (%)	
		Chroma	Hue
1	77	-11%	-4%
2	77	-9%	8%
3	69	-3%	15%
4	75	8%	14%
5	82	11%	8%
6	84	9%	-3%
7	72	5%	-15%
8	86	-2%	-8%
9	82	-8%	-6%
10	80	-10%	2%
11	78	-7%	11%
12	80	3%	8%
13	87	8%	-1%
14	82	7%	-10%
15	77	3%	-13%
16	80	-7%	-12%



Beam details



Beam intensities from 1-20m

1m	2m	3m	4m	5m	6m	7m	8m	9m	10m	11m	12m	13m	14m	15m	16m	17m	18m	19m	20m
3.3ft	6.6ft	9.8ft	13.1ft	16.4ft	19.7ft	23ft	26.2ft	29.5ft	32.8ft	36.1ft	39.4ft	42.7ft	45.9ft	49.2ft	52.5ft	55.8ft	59.1ft	62.3ft	65.6ft
1135lx	284lx	126lx	71lx	45lx	32lx	23lx	18lx	14lx	11lx	9lx	8lx	7lx	6lx	5lx	4lx	4lx	4lx	3lx	3lx
105.5fcd	26.4fcd	11.7fcd	6.6fcd	4.2fcd	2.9fcd	2.2fcd	1.6fcd	1.3fcd	1.1fcd	0.9fcd	0.7fcd	0.6fcd	0.5fcd	0.5fcd	0.4fcd	0.4fcd	0.3fcd	0.3fcd	0.3fcd

Intensities in 0° c-plane

0°	5°	10°	15°	20°	25°	30°	35°	40°	45°	50°	55°	60°	65°	70°	75°	80°	85°	90°	95°
1135	1128	1119	1104	1083	1048	994	922	831	726	614	500	388	281	184	103	46	19	4	1
100%	99%	99%	97%	95%	92%	88%	81%	73%	64%	54%	44%	34%	25%	16%	9%	4%	2%	0%	0%

Intensities in 90° c-plane

0°	5°	10°	15°	20°	25°	30°	35°	40°	45°	50°	55°	60°	65°	70°	75°	80°	85°	90°	95°
1135	957	826	732	647	560	485	433	386	329	267	214	164	119	83	53	29	13	3	1
100%	84%	73%	64%	57%	49%	43%	38%	34%	29%	24%	19%	14%	10%	7%	5%	3%	1%	0%	0%

Intensities in 180° c-plane

0°	5°	10°	15°	20°	25°	30°	35°	40°	45°	50°	55°	60°	65°	70°	75°	80°	85°	90°	95°
1135	1140	1142	1136	1119	1086	1033	956	857	743	619	494	374	263	164	83	34	12	2	2
100%	100%	101%	100%	99%	96%	91%	84%	76%	65%	55%	43%	33%	23%	14%	7%	3%	1%	0%	0%

Intensities in 270° c-plane

0°	5°	10°	15°	20°	25°	30°	35°	40°	45°	50°	55°	60°	65°	70°	75°	80°	85°	90°	95°
1135	1314	1471	1586	1644	1626	1565	1469	1338	1185	1008	820	629	445	286	153	59	16	2	2
100%	116%	130%	140%	145%	143%	138%	129%	118%	104%	89%	72%	55%	39%	25%	13%	5%	1%	0%	0%

Beam angle 50%	Field angle 10%	Cutoff angle 2,5%	Intensity ratio in 120° cone	Intensity ratio in 90° cone
80°	140°	160.9°	84.2%	58.7%