

Light efficiency:

**54 Lumen/Watt**

Light quality:

**CRI: 82.4**

Color temperature:

**2937 K**

**Output: 1047 lm**

**Peak: 1754 cd**

**Power: 19.4 W**

**PF: 0.99**



Beam angle

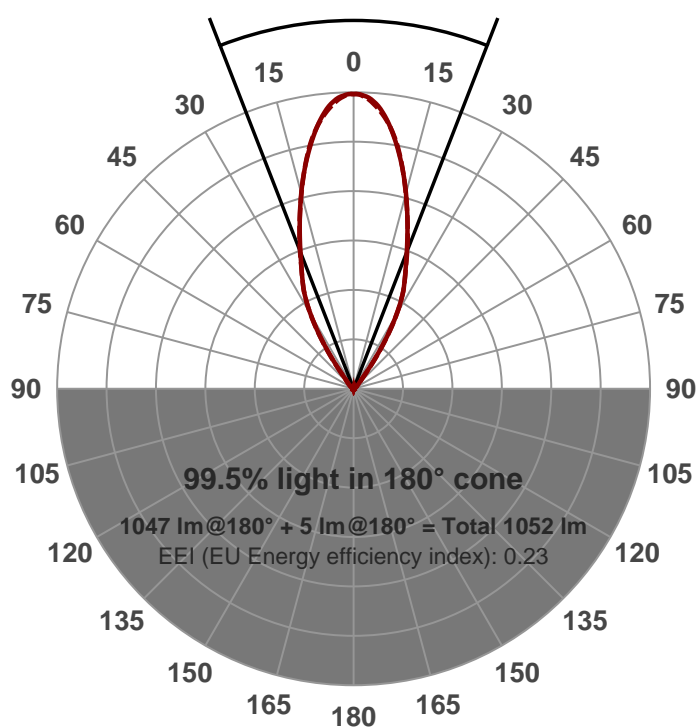
**42.5°**

Product name:

**730-3-XTM19-20LM-30K-83-SSA40-CRO**

Date and time:

**9/27/2016 10:43:02 AM**

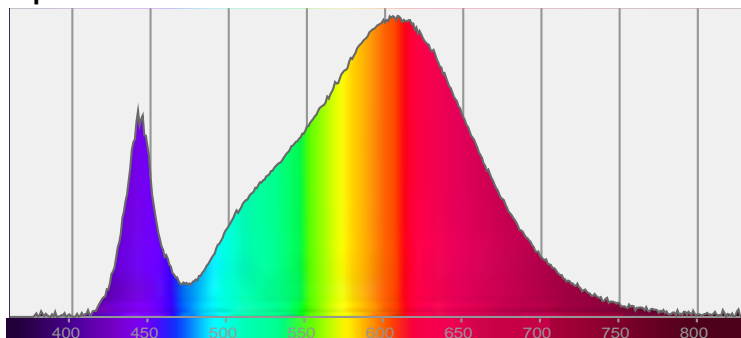


CIE 1931

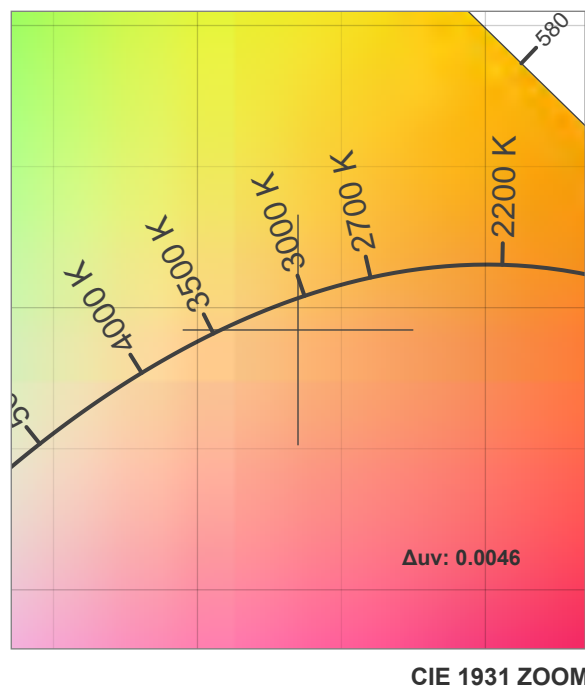
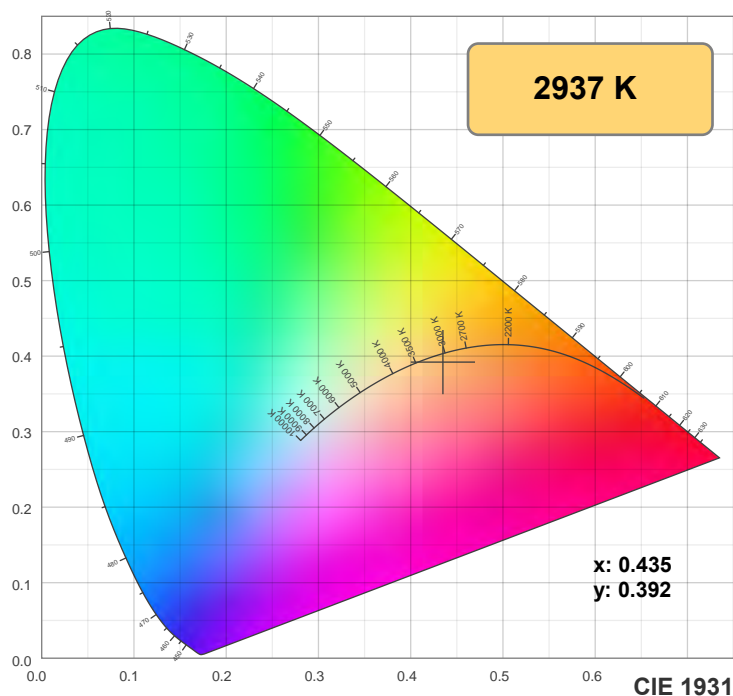
x: 0.435

y: 0.392

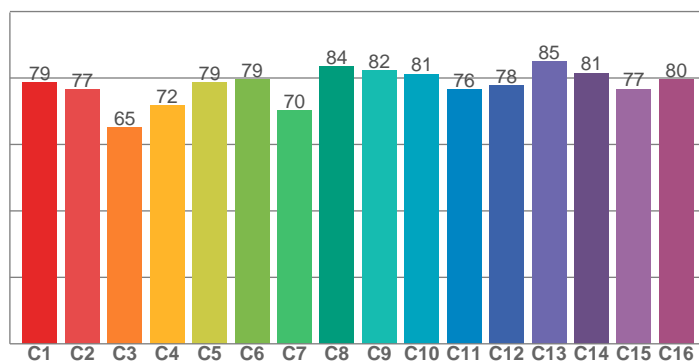
Spectra



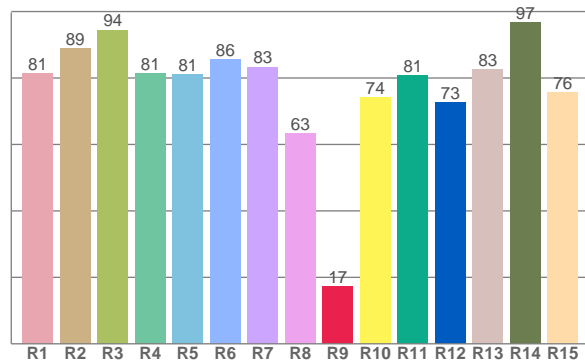
## Color details



TM30: 77.6



CRI: 82.4 (R1-R8)



CRI R values, only R1-R8 are used to calculate final CRI value

R1	R2	R3	R4	R5	R6	R7	R8	R9	R10	R11	R12	R13	R14	R15
81.4	88.8	94.5	81.3	81.0	85.5	83.3	63.5	17.3	74.2	80.8	72.8	82.7	96.6	75.7

TM30 C values, 16 binned values out of total of 99 C values

C1	C2	C3	C4	C5	C6	C7	C8	C9	C10	C11	C12	C13	C14	C15	C16
78.6	76.5	65.2	71.7	78.7	79.5	70.3	83.5	82.3	81.2	76.5	77.8	85.0	81.5	76.7	79.6

## Color parameters

Color temperature	Color rendering index	Red component	Color fidelity	Color gamut	Color coordinate cie 1931	Color coordinate cie 1931	Color coordinate	Color coordinate	Color deviation from black body
CCT	CRI	CRI R9	TM30 Rf	TM30 Rg	x	y	u	v	Δuv
2937 K	82.4	17.3	77.6	101.7	0.435	0.392	0.255	0.344	0.0046

## TM30 details

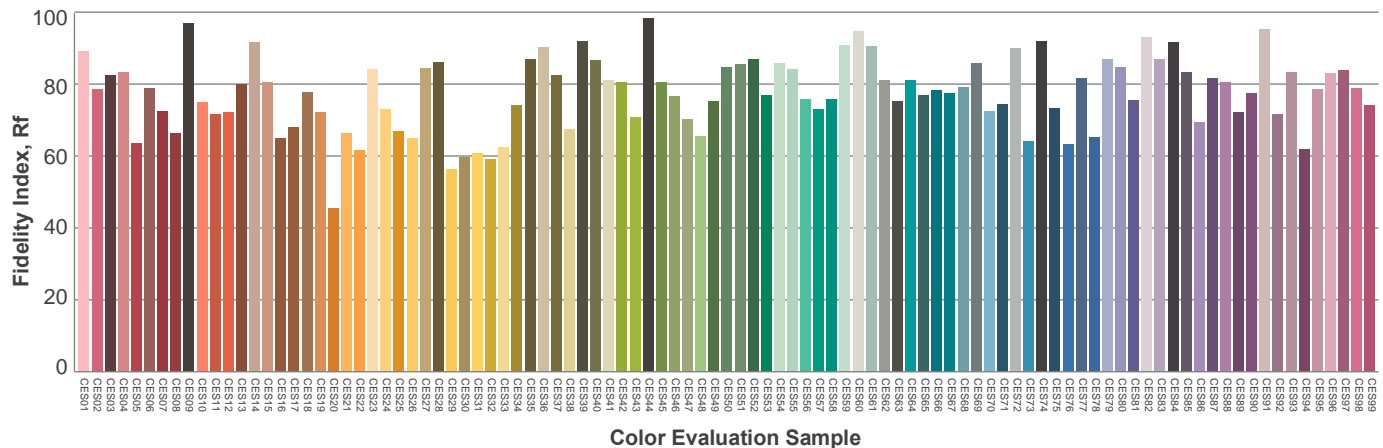
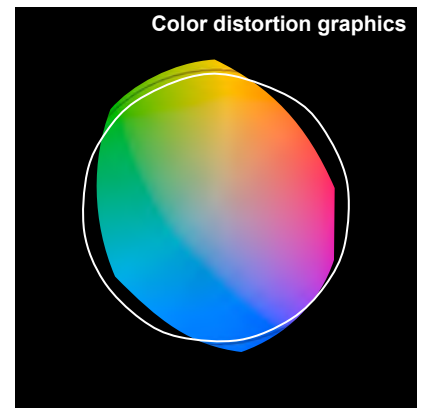
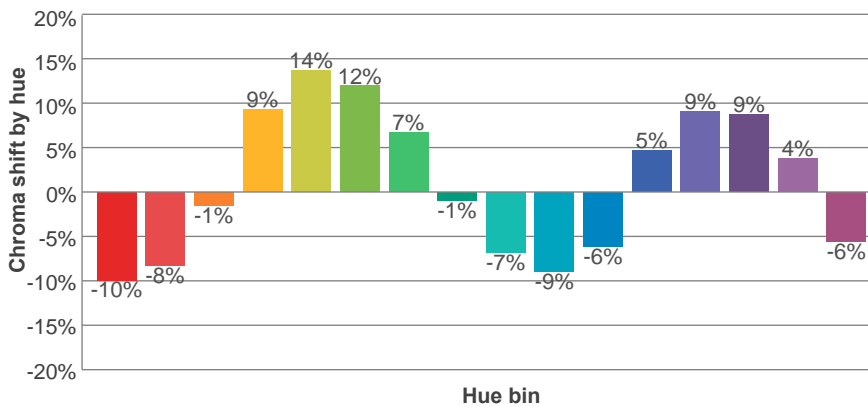
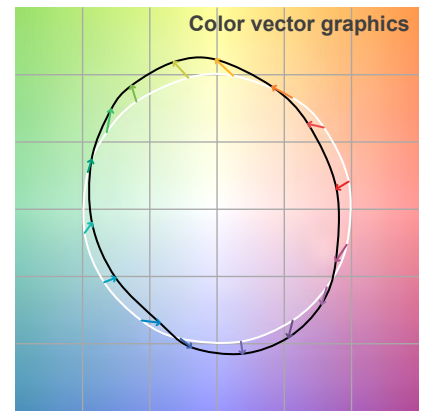
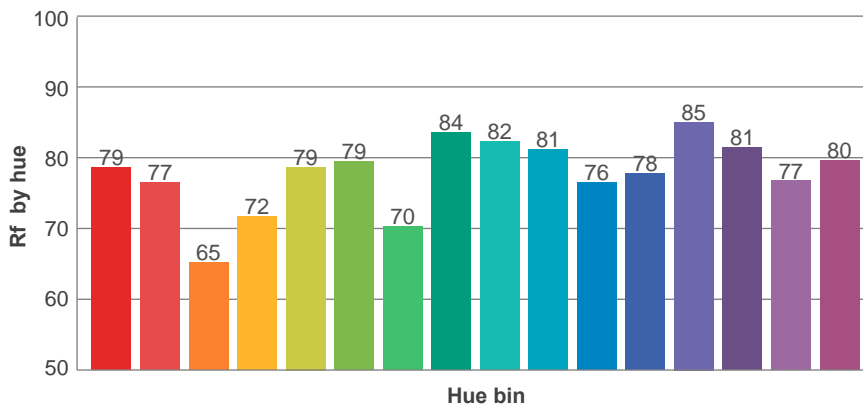
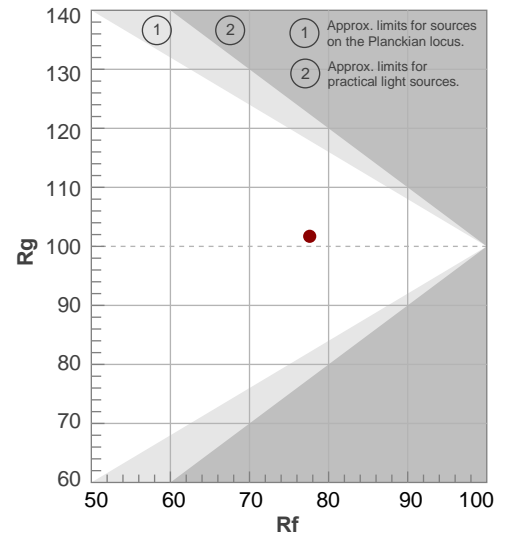
**Rf 77.6**

Fidelity index Rf

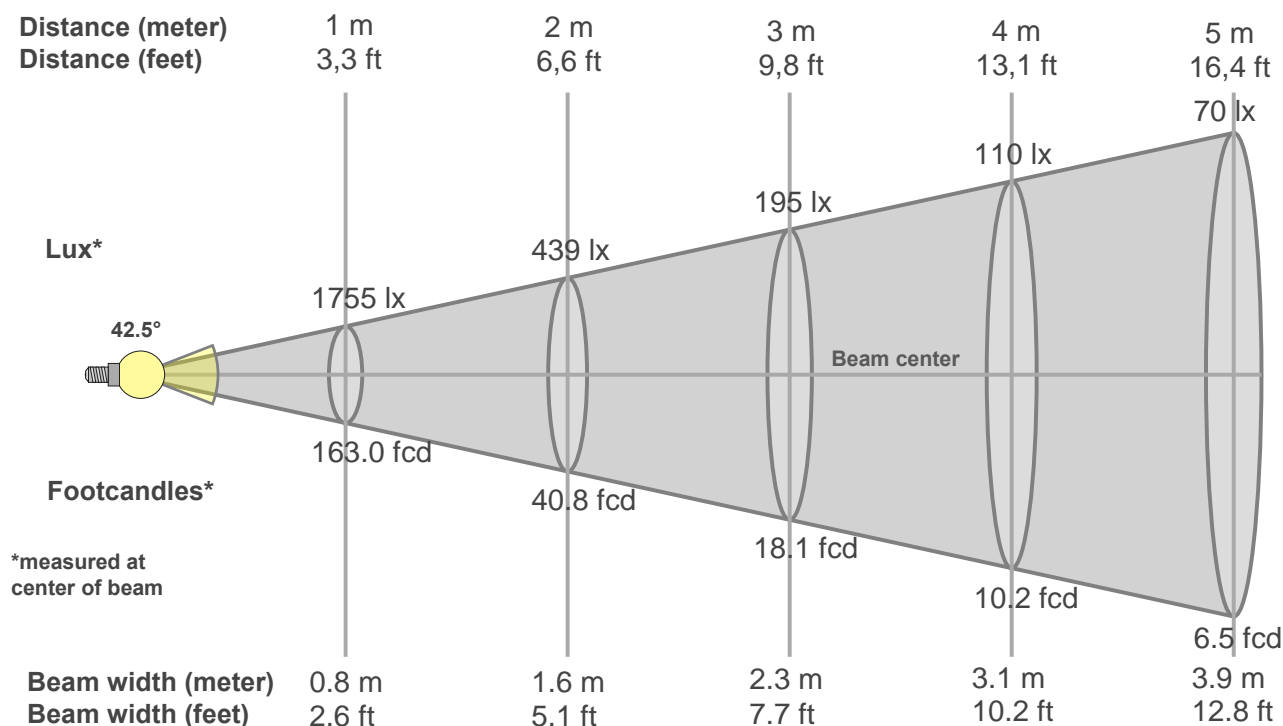
**Rg 101.7**

Gamut index Rg

Hue Bin	R <sub>f</sub>	Graphic shifts (%)	
		Chroma	Hue
1	79	-10%	-4%
2	77	-8%	9%
3	65	-1%	17%
4	72	9%	15%
5	79	14%	8%
6	79	12%	-4%
7	70	7%	-16%
8	84	-1%	-9%
9	82	-7%	-6%
10	81	-9%	2%
11	76	-6%	12%
12	78	5%	9%
13	85	9%	-1%
14	81	9%	-10%
15	77	4%	-12%
16	80	-6%	-14%



## Beam details



### Beam intensities from 1-20m

1m	2m	3m	4m	5m	6m	7m	8m	9m	10m	11m	12m	13m	14m	15m	16m	17m	18m	19m	20m
3.3ft	6.6ft	9.8ft	13.1ft	16.4ft	19.7ft	23ft	26.2ft	29.5ft	32.8ft	36.1ft	39.4ft	42.7ft	45.9ft	49.2ft	52.5ft	55.8ft	59.1ft	62.3ft	65.6ft
1755lx	439lx	195lx	110lx	70lx	49lx	36lx	27lx	22lx	18lx	15lx	12lx	10lx	9lx	8lx	7lx	6lx	5lx	5lx	4lx
163fcd	40.8fcd	18.1fcd	10.2fcd	6.5fcd	4.5fcd	3.3fcd	2.5fcd	2fcd	1.6fcd	1.3fcd	1.1fcd	1fcd	0.8fcd	0.7fcd	0.6fcd	0.6fcd	0.5fcd	0.5fcd	0.4fcd

### Intensities in 0° c-plane

0°	2°	4°	6°	8°	10°	12°	14°	16°	18°	20°	22°	24°	26°	28°	30°	32°	34°	36°	38°
1755	1746	1714	1655	1572	1474	1370	1261	1148	1038	934	840	758	686	607	511	403	293	192	117
100%	99%	98%	94%	90%	84%	78%	72%	65%	59%	53%	48%	43%	39%	35%	29%	23%	17%	11%	7%

### Intensities in 90° c-plane

0°	2°	4°	6°	8°	10°	12°	14°	16°	18°	20°	22°	24°	26°	28°	30°	32°	34°	36°	38°
1755	1740	1700	1644	1572	1482	1373	1258	1145	1040	941	845	759	687	607	513	408	301	204	126
100%	99%	97%	94%	90%	84%	78%	72%	65%	59%	54%	48%	43%	39%	35%	29%	23%	17%	12%	7%

### Intensities in 180° c-plane

0°	2°	4°	6°	8°	10°	12°	14°	16°	18°	20°	22°	24°	26°	28°	30°	32°	34°	36°	38°
1755	1746	1714	1655	1572	1474	1370	1261	1148	1038	934	840	758	686	607	511	403	293	192	117
100%	99%	98%	94%	90%	84%	78%	72%	65%	59%	53%	48%	43%	39%	35%	29%	23%	17%	11%	7%

### Intensities in 270° c-plane

0°	2°	4°	6°	8°	10°	12°	14°	16°	18°	20°	22°	24°	26°	28°	30°	32°	34°	36°	38°
1755	1740	1700	1644	1572	1482	1373	1258	1145	1040	941	845	759	687	607	513	408	301	204	126
100%	99%	97%	94%	90%	84%	78%	72%	65%	59%	54%	48%	43%	39%	35%	29%	23%	17%	12%	7%

Beam angle 50%	Field angle 10%	Cutoff angle 2,5%	Intensity ratio in 120° cone	Intensity ratio in 90° cone
42.5°	73.1°	91°	98.1%	94.9%