

Light efficiency:

78 Lumen/Watt

Light quality:

CRI: 82.0

Color temperature:

2965 K

Output: 1555 lm

Peak: 4154 cd

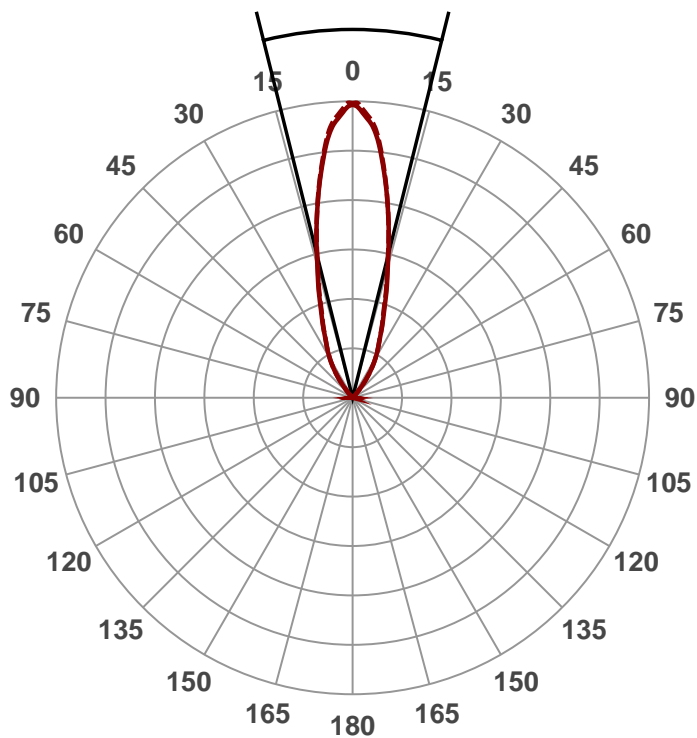
Power: 19.9 W

PF: 0.99



Beam angle

28°



Product name:

731-3-XTM19-20LM-30K-83-SSA20

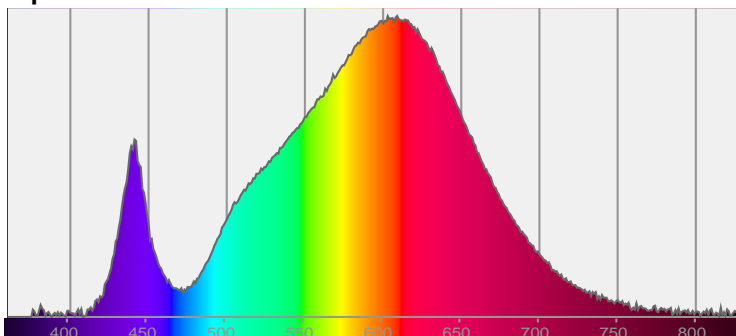
Date and time:

11/29/2016 10:09:11 AM

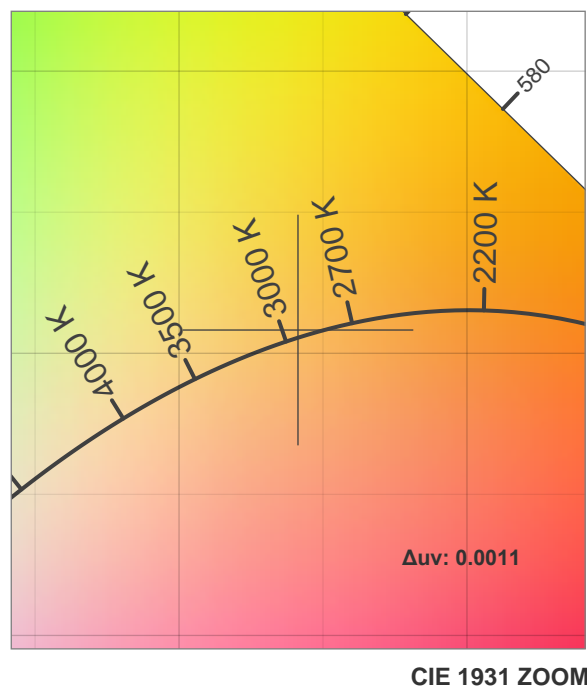
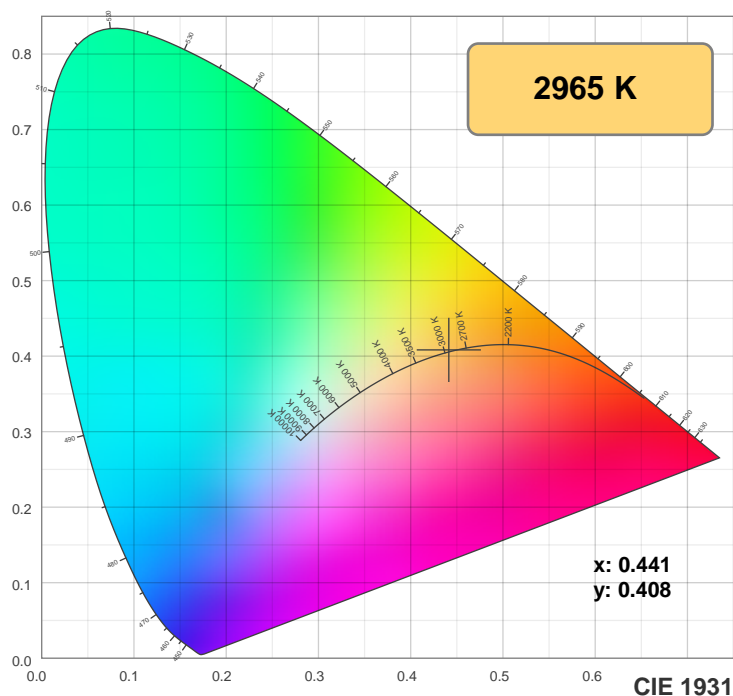


CIE 1931
x: 0.441
y: 0.408

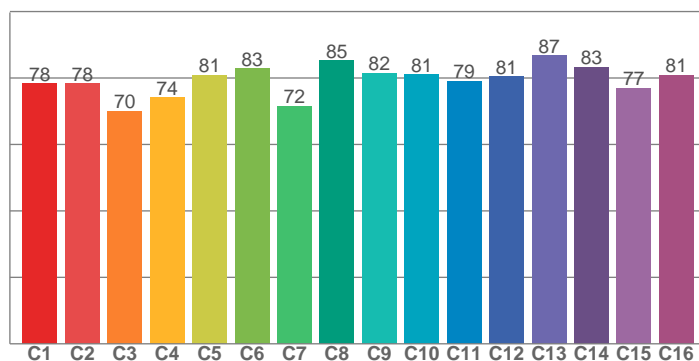
Spectra



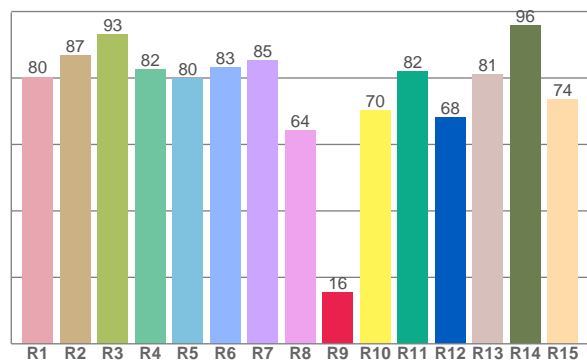
Color details



TM30: 79.3



CRI: 82.0 (R1-R8)



CRI R values, only R1-R8 are used to calculate final CRI value

R1	R2	R3	R4	R5	R6	R7	R8	R9	R10	R11	R12	R13	R14	R15
80.3	86.9	93.3	82.5	79.8	83.2	85.3	64.3	15.6	70.3	82.0	68.1	81.2	95.8	73.6

TM30 C values, 16 binned values out of total of 99 C values

C1	C2	C3	C4	C5	C6	C7	C8	C9	C10	C11	C12	C13	C14	C15	C16
78.3	78.4	70.0	74.1	80.9	82.9	71.5	85.3	81.5	81.1	79.1	80.5	86.7	83.3	77.0	80.9

Color parameters

Color temperature	Color rendering index	Red component	Color fidelity	Color gamut	Color coordinate cie 1931	Color coordinate cie 1931	Color coordinate	Color coordinate	Color deviation from black body
CCT	CRI	CRI R9	TM30 Rf	TM30 Rg	x	y	u	v	Δuv
2965 K	82.0	15.6	79.3	99.9	0.441	0.408	0.252	0.349	0.0011

TM30 details

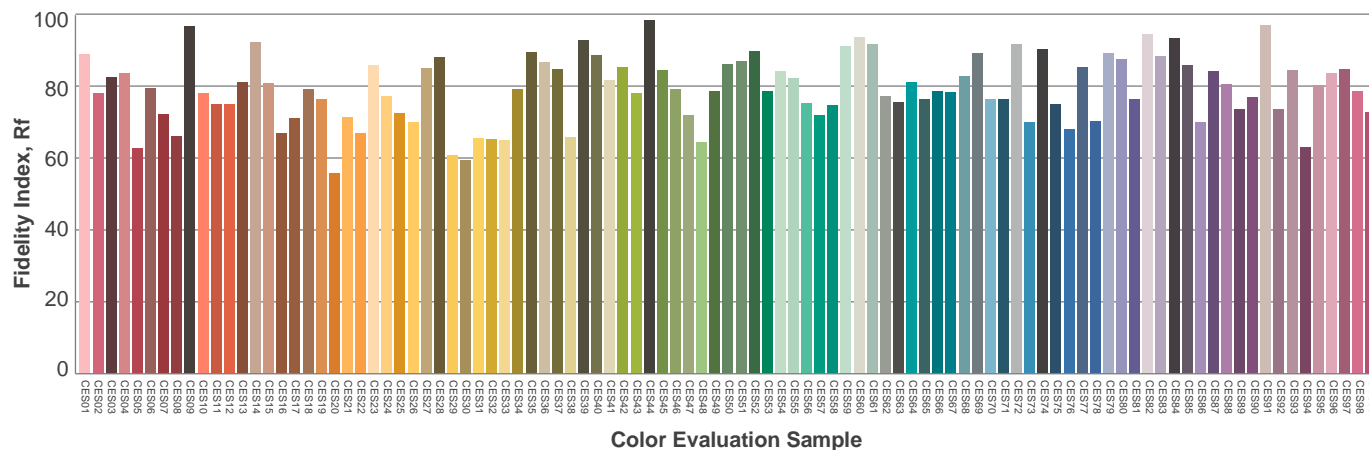
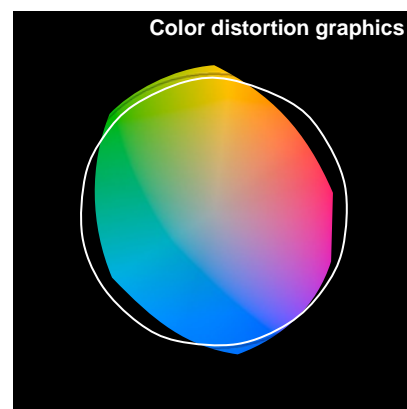
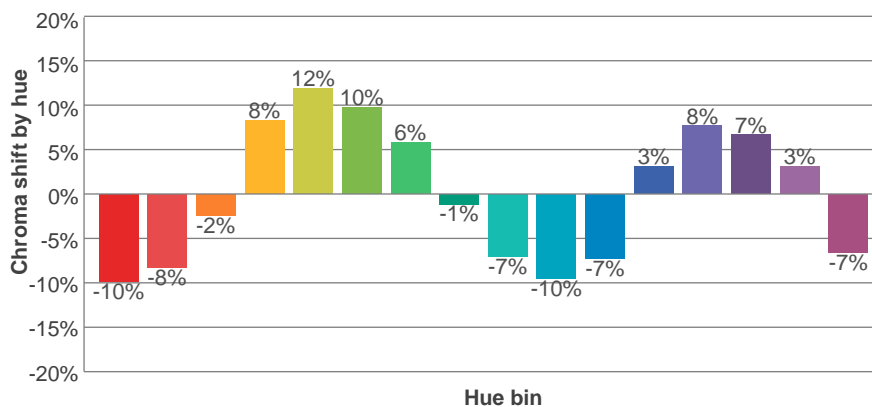
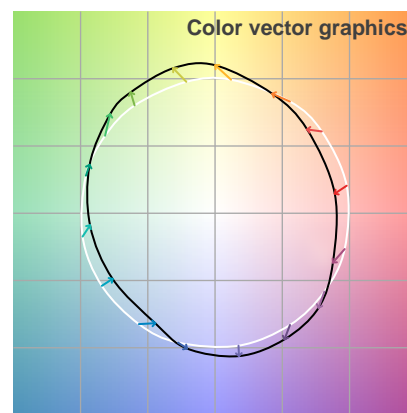
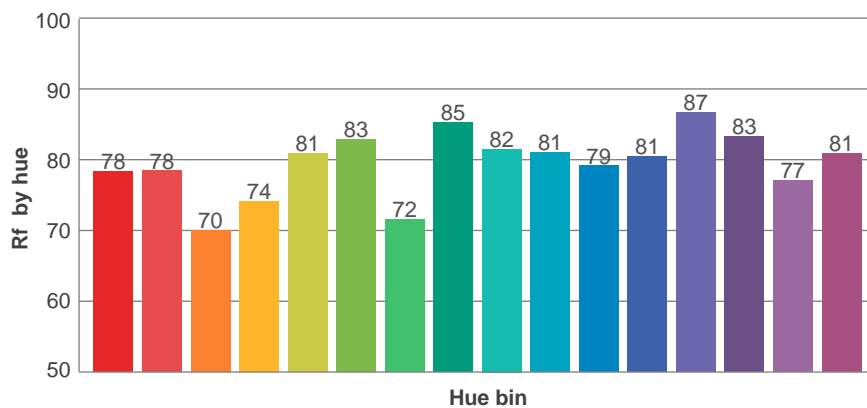
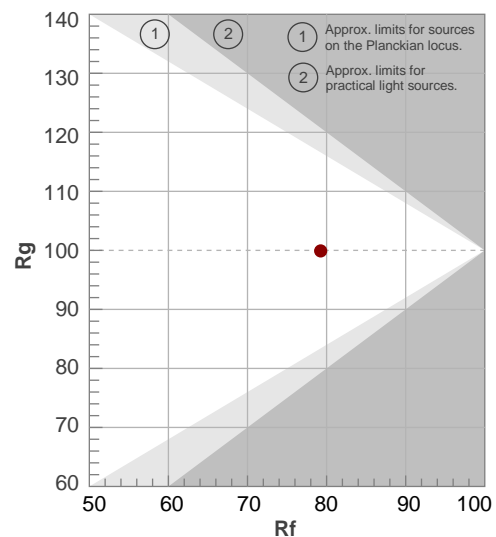
Rf 79.3

Fidelity index Rf

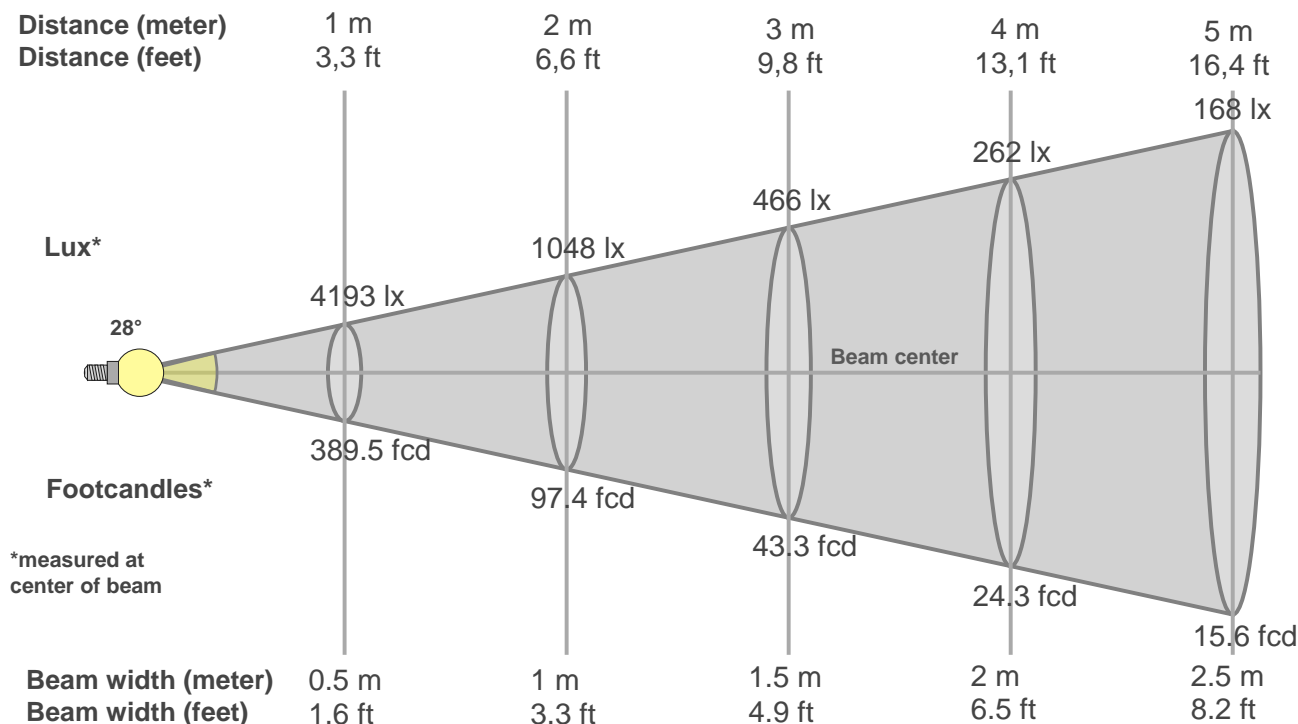
Rg 99.9

Gamut index Rg

Hue Bin	R _f	Graphic shifts (%)	
		Chroma	Hue
1	78	-10%	-4%
2	78	-8%	7%
3	70	-2%	14%
4	74	8%	14%
5	81	12%	8%
6	83	10%	-3%
7	72	6%	-15%
8	85	-1%	-8%
9	82	-7%	-7%
10	81	-10%	0%
11	79	-7%	10%
12	81	3%	7%
13	87	8%	-1%
14	83	7%	-9%
15	77	3%	-12%
16	81	-7%	-12%



Beam details



Beam intensities from 1-20m

1m	2m	3m	4m	5m	6m	7m	8m	9m	10m	11m	12m	13m	14m	15m	16m	17m	18m	19m	20m
3.3ft	6.6ft	9.8ft	13.1ft	16.4ft	19.7ft	23ft	26.2ft	29.5ft	32.8ft	36.1ft	39.4ft	42.7ft	45.9ft	49.2ft	52.5ft	55.8ft	59.1ft	62.3ft	65.6ft
4193lx	1048lx	466lx	262lx	168lx	116lx	86lx	66lx	52lx	42lx	35lx	29lx	25lx	21lx	19lx	16lx	15lx	13lx	12lx	10lx
389.5fcd	97.4fcd	43.3fcd	24.3fcd	15.6fcd	10.8fcd	7.9fcd	6.1fcd	4.8fcd	3.9fcd	3.2fcd	2.7fcd	2.3fcd	2fcd	1.7fcd	1.5fcd	1.3fcd	1.2fcd	1.1fcd	1fcd

Intensities in 0° c-plane

0°	2°	4°	6°	8°	10°	12°	14°	16°	18°	20°	22°	24°	26°	28°	30°	32°	34°	36°	38°
4193	4083	3921	3635	3251	2863	2484	2111	1806	1551	1318	1145	981	858	757	657	552	446	336	227
100%	97%	94%	87%	78%	68%	59%	50%	43%	37%	31%	27%	23%	20%	18%	16%	13%	11%	8%	5%

Intensities in 90° c-plane

0°	2°	4°	6°	8°	10°	12°	14°	16°	18°	20°	22°	24°	26°	28°	30°	32°	34°	36°	38°
4193	4073	3909	3616	3223	2828	2442	2061	1754	1500	1269	1111	960	840	741	643	541	439	329	221
100%	97%	93%	86%	77%	67%	58%	49%	42%	36%	30%	26%	23%	20%	18%	15%	13%	10%	8%	5%

Intensities in 180° c-plane

0°	2°	4°	6°	8°	10°	12°	14°	16°	18°	20°	22°	24°	26°	28°	30°	32°	34°	36°	38°
4193	4083	3921	3635	3251	2863	2484	2111	1806	1551	1318	1145	981	858	757	657	552	446	336	227
100%	97%	94%	87%	78%	68%	59%	50%	43%	37%	31%	27%	23%	20%	18%	16%	13%	11%	8%	5%

Intensities in 270° c-plane

0°	2°	4°	6°	8°	10°	12°	14°	16°	18°	20°	22°	24°	26°	28°	30°	32°	34°	36°	38°
4193	4073	3909	3616	3223	2828	2442	2061	1754	1500	1269	1111	960	840	741	643	541	439	329	221
100%	97%	93%	86%	77%	67%	58%	49%	42%	36%	30%	26%	23%	20%	18%	15%	13%	10%	8%	5%

Beam angle 50%	Field angle 10%	Cutoff angle 2,5%	Intensity ratio in 120° cone	Intensity ratio in 90° cone
28°	68.9°	81.8°	99.4%	98.9%