

Light efficiency:

87 Lumen/Watt

Light quality:

CRI: 81.8

Color temperature:

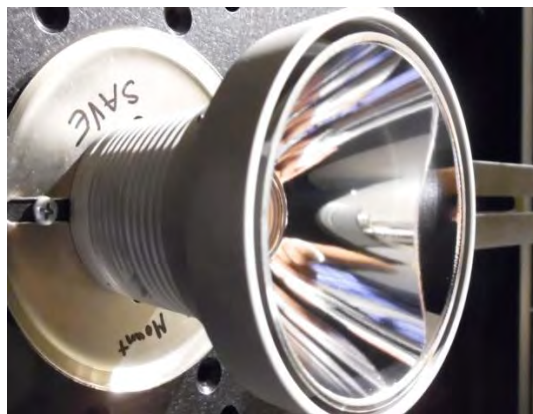
2903 K

Output: 893 lm

Peak: 1095 cd

Power: 10.2 W

PF: 1.0



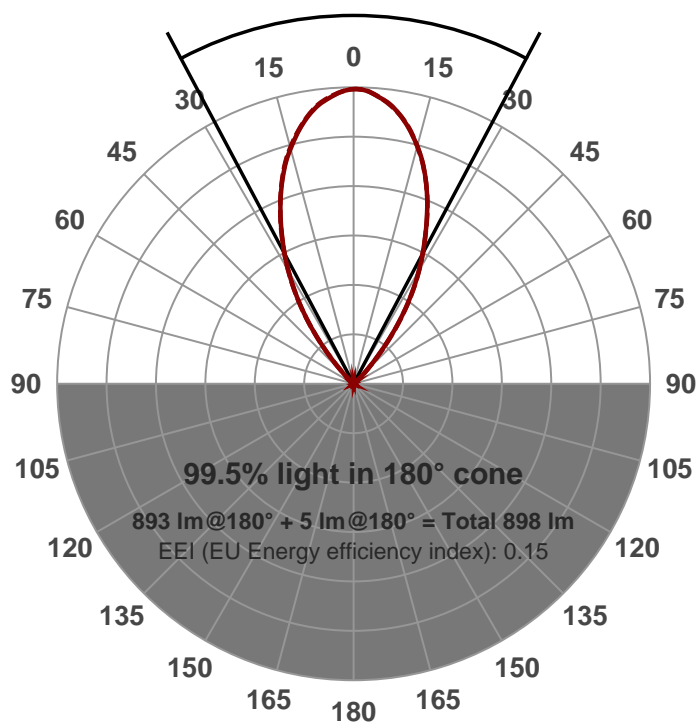
Beam angle

55.9°

Product name:

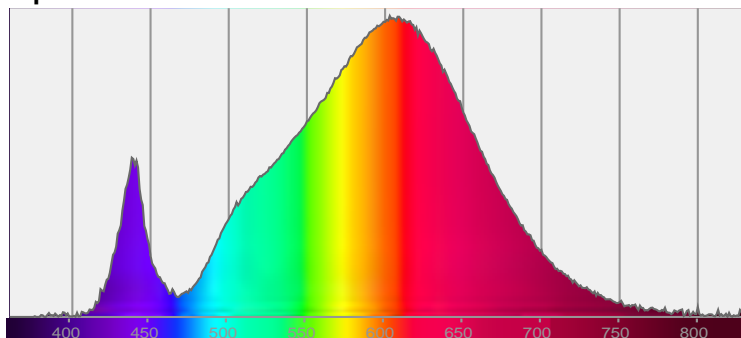
730-2-411-XTM19-10LM-30K-83-SA60

Date and time: 9/30/2016 3:50:26 PM

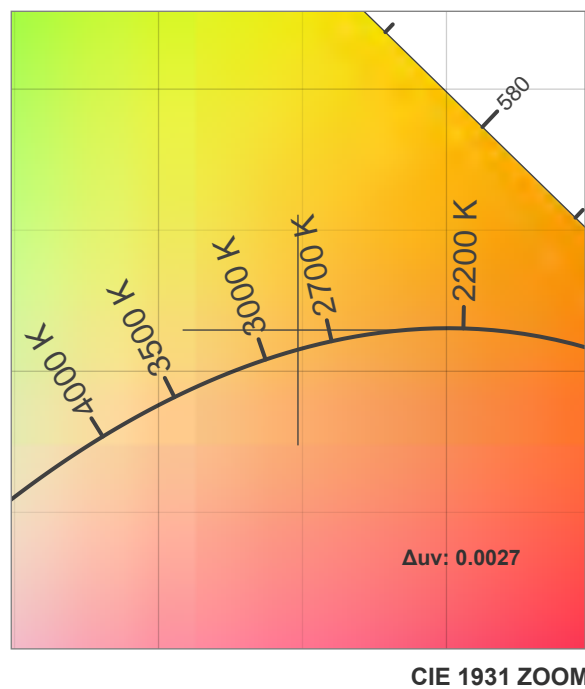
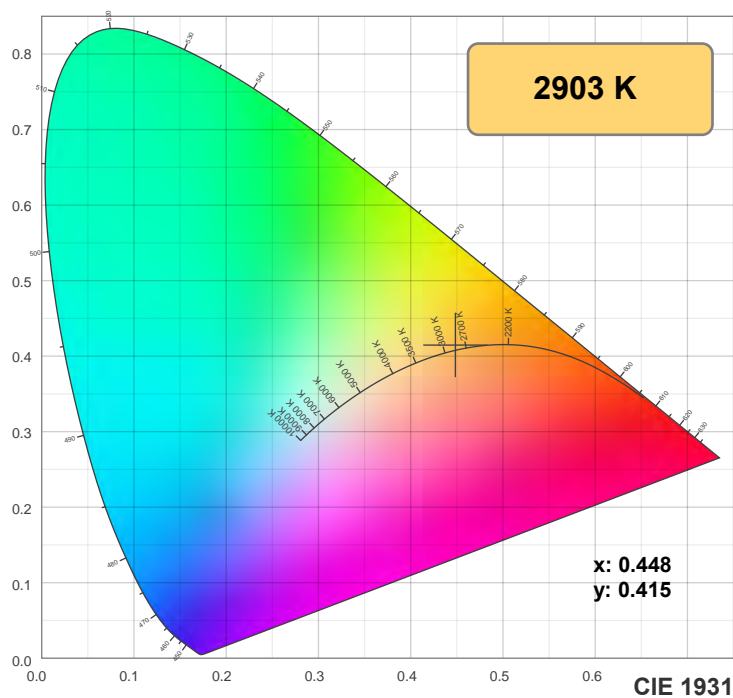


CIE 1931
 x: 0.448
 y: 0.415

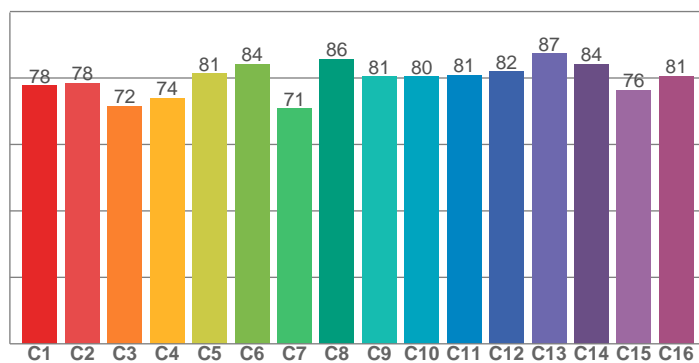
Spectra



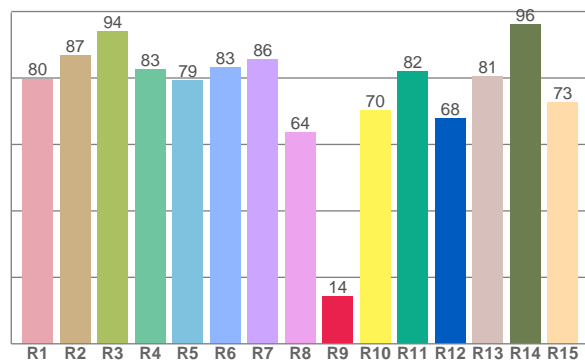
Color details



TM30: 79.5



CRI: 81.8 (R1-R8)



CRI R values, only R1-R8 are used to calculate final CRI value

R1	R2	R3	R4	R5	R6	R7	R8	R9	R10	R11	R12	R13	R14	R15
79.7	86.7	94.0	82.5	79.3	83.2	85.6	63.6	14.2	70.2	82.0	67.8	80.6	96.2	72.6

TM30 C values, 16 binned values out of total of 99 C values

C1	C2	C3	C4	C5	C6	C7	C8	C9	C10	C11	C12	C13	C14	C15	C16
77.7	78.5	71.6	74.0	81.3	84.2	70.8	85.7	80.5	80.4	80.9	82.0	87.4	84.2	76.4	80.6

Color parameters

Color temperature	Color rendering index	Red component	Color fidelity	Color gamut	Color coordinate cie 1931	Color coordinate cie 1931	Color coordinate	Color coordinate	Color deviation from black body
CCT	CRI	CRI R9	TM30 Rf	TM30 Rg	x	y	u	v	Δuv
2903 K	81.8	14.2	79.5	99.0	0.448	0.415	0.253	0.351	0.0027

TM30 details

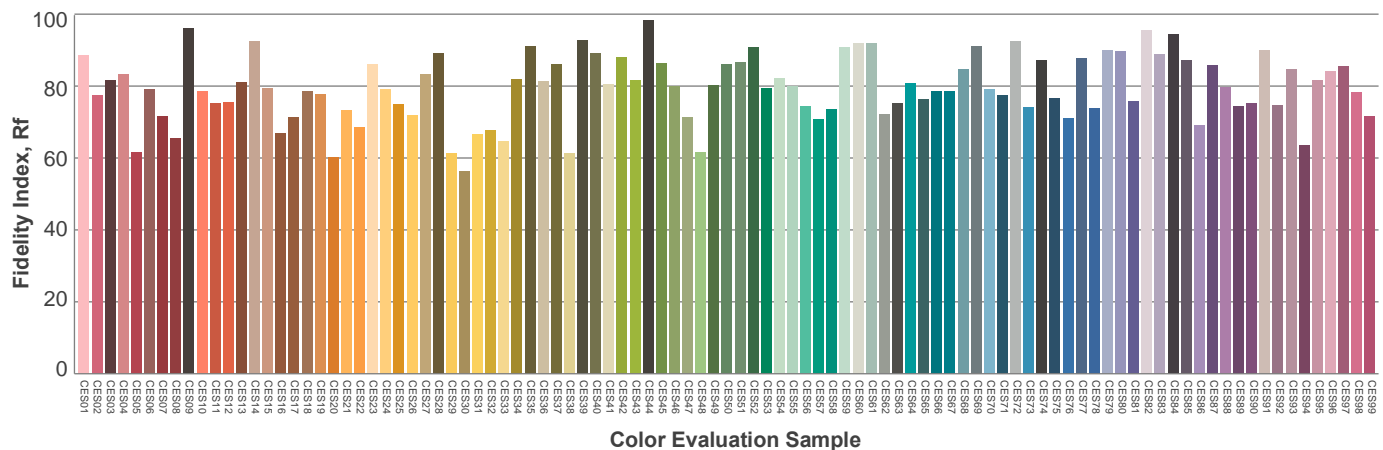
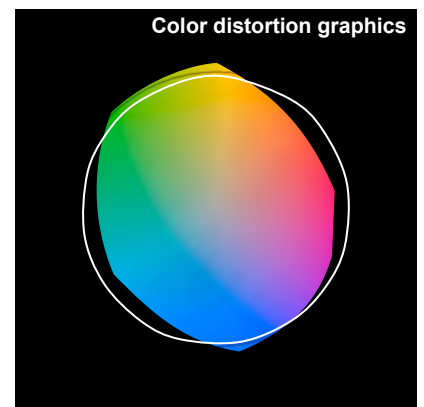
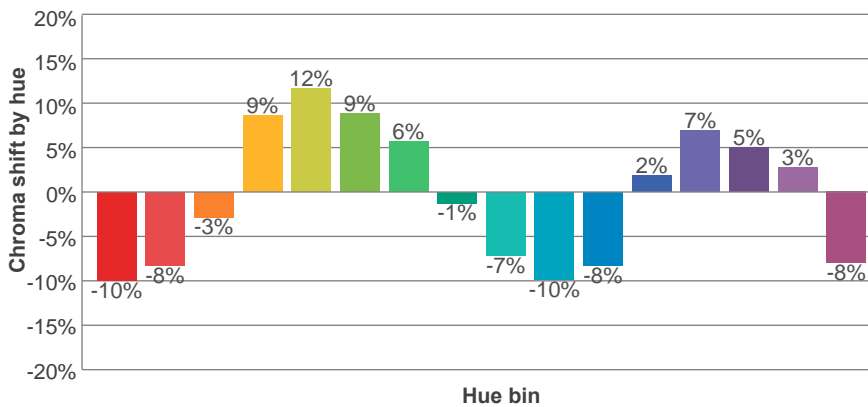
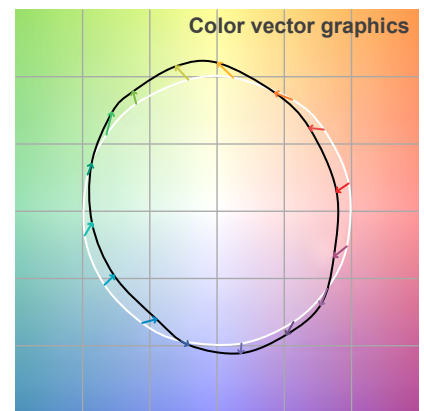
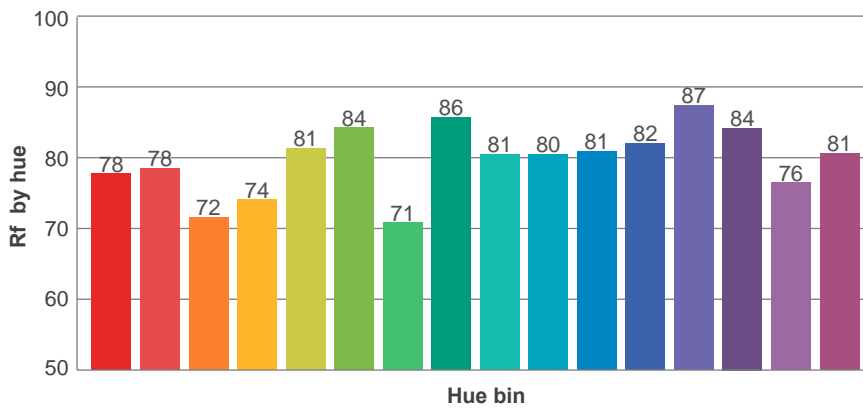
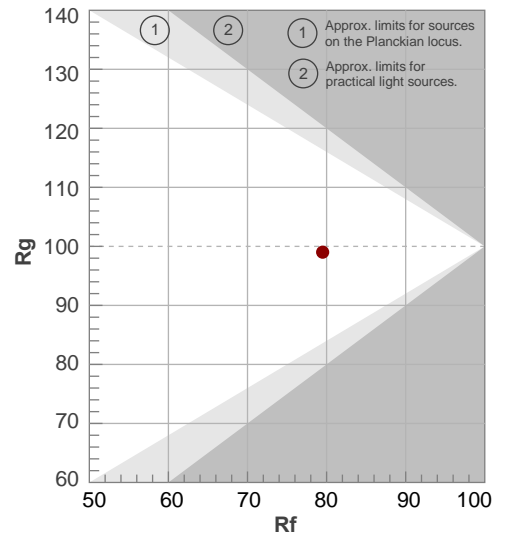
Rf 79.5

Fidelity index Rf

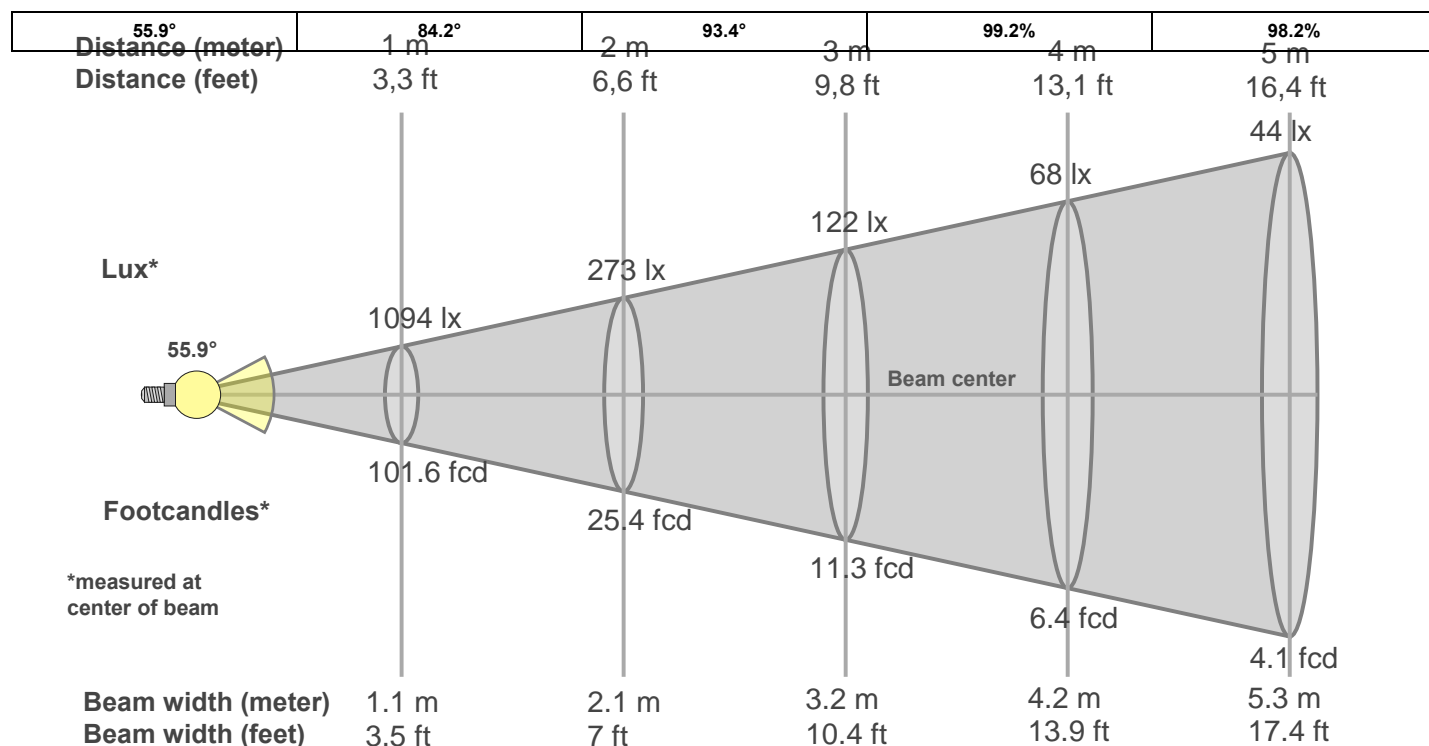
Rg 99.0

Gamut index Rg

Hue Bin	R _f	Graphic shifts (%)	
		Chroma	Hue
1	78	-10%	-4%
2	78	-8%	7%
3	72	-3%	13%
4	74	9%	13%
5	81	12%	7%
6	84	9%	-3%
7	71	6%	-16%
8	86	-1%	-8%
9	81	-7%	-8%
10	80	-10%	-2%
11	81	-8%	7%
12	82	2%	6%
13	87	7%	-2%
14	84	5%	-9%
15	76	3%	-13%
16	81	-8%	-9%



Beam details



Beam intensities from 1-20m

1m	2m	3m	4m	5m	6m	7m	8m	9m	10m	11m	12m	13m	14m	15m	16m	17m	18m	19m	20m
3.3ft	6.6ft	9.8ft	13.1ft	16.4ft	19.7ft	23ft	26.2ft	29.5ft	32.8ft	36.1ft	39.4ft	42.7ft	45.9ft	49.2ft	52.5ft	55.8ft	59.1ft	62.3ft	65.6ft
1094lx	273lx	122lx	68lx	44lx	30lx	22lx	17lx	14lx	11lx	9lx	8lx	6lx	6lx	5lx	4lx	4lx	3lx	3lx	3lx
101.6fcd	25.4fcd	11.3fcd	6.4fcd	4.1fcd	2.8fcd	2.1fcd	1.6fcd	1.3fcd	1fcd	0.8fcd	0.7fcd	0.6fcd	0.5fcd	0.5fcd	0.4fcd	0.4fcd	0.3fcd	0.3fcd	0.3fcd

Intensities in 0° c-plane

0°	2°	4°	6°	8°	10°	12°	14°	16°	18°	20°	22°	24°	26°	28°	30°	32°	34°	36°	38°
1094	1087	1072	1054	1031	1001	966	924	882	834	781	725	666	605	545	484	421	357	291	226
100%	99%	98%	96%	94%	92%	88%	85%	81%	76%	71%	66%	61%	55%	50%	44%	38%	33%	27%	21%

Intensities in 90° c-plane

0°	2°	4°	6°	8°	10°	12°	14°	16°	18°	20°	22°	24°	26°	28°	30°	32°	34°	36°	38°
1094	1086	1074	1057	1034	1004	968	928	886	838	784	727	668	607	547	486	423	358	292	226
100%	99%	98%	97%	95%	92%	88%	85%	81%	77%	72%	66%	61%	56%	50%	44%	39%	33%	27%	21%

Intensities in 180° c-plane

0°	2°	4°	6°	8°	10°	12°	14°	16°	18°	20°	22°	24°	26°	28°	30°	32°	34°	36°	38°
1094	1090	1077	1060	1038	1009	974	934	891	842	788	730	668	606	545	485	423	359	293	228
100%	100%	98%	97%	95%	92%	89%	85%	81%	77%	72%	67%	61%	55%	50%	44%	39%	33%	27%	21%

Intensities in 270° c-plane

0°	2°	4°	6°	8°	10°	12°	14°	16°	18°	20°	22°	24°	26°	28°	30°	32°	34°	36°	38°
1094	1091	1078	1059	1036	1009	976	935	890	841	788	731	670	607	547	487	425	362	296	232
100%	100%	99%	97%	95%	92%	89%	85%	81%	77%	72%	67%	61%	56%	50%	45%	39%	33%	27%	21%

Beam angle 50%	Field angle 10%	Cutoff angle 2,5%	Intensity ratio in 120° cone	Intensity ratio in 90° cone
55.9°	84.2°	93.4°	99.2%	98.2%