

Light efficiency:

65 Lumen/Watt

Light quality:

CRI: 82.6

Color temperature:

2998 K

Output: 840 lm

Peak: 1606 cd

Power: 12.8 W

PF: 0.98

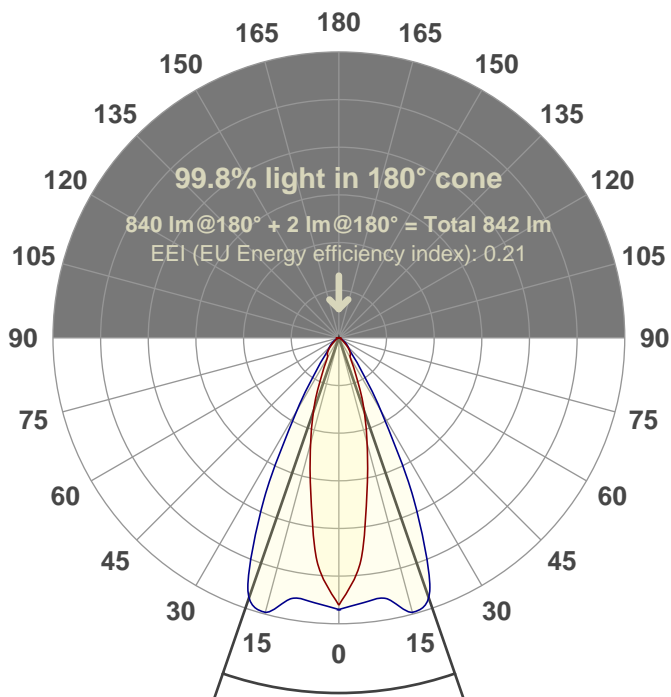


Product name:

137420-XTM19-13LM-30K-83-SA20-120-ELV-MC-900300MC-900320

Date and time:

3/19/2018 9:06:15 AM



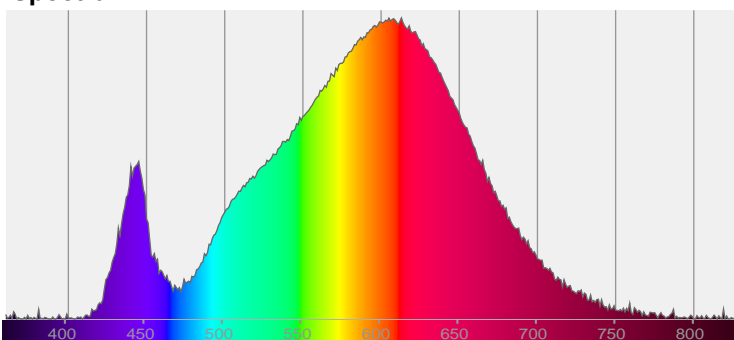
Beam angle

38.1°

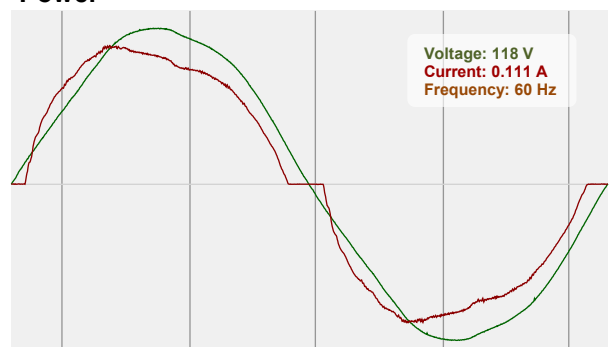


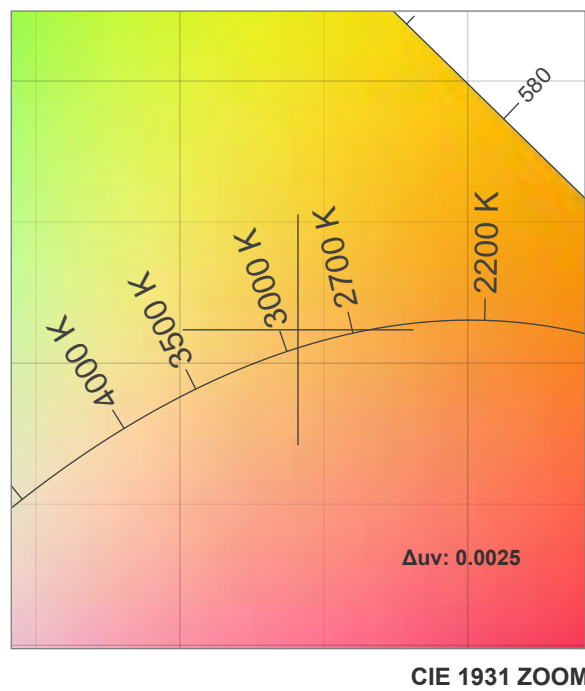
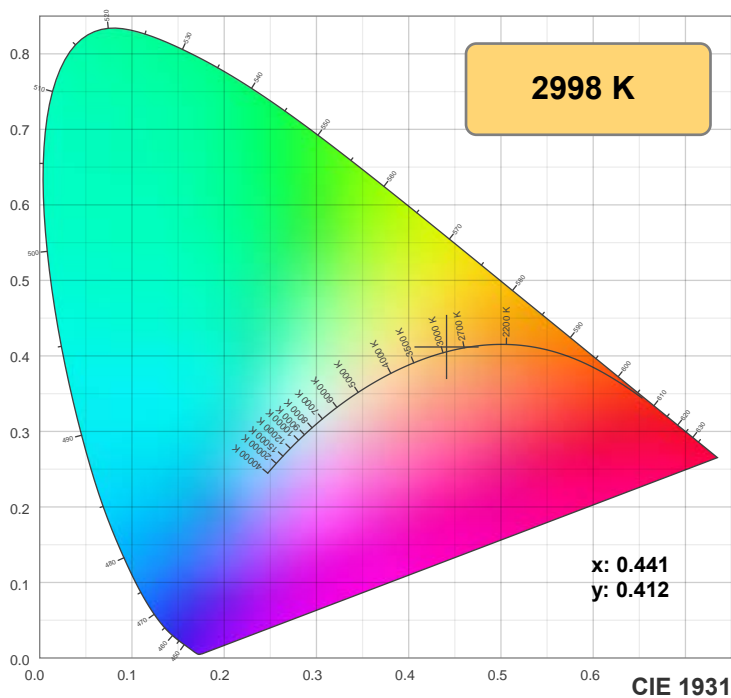
CIE 1931
x: 0.441
y: 0.412

Spectra

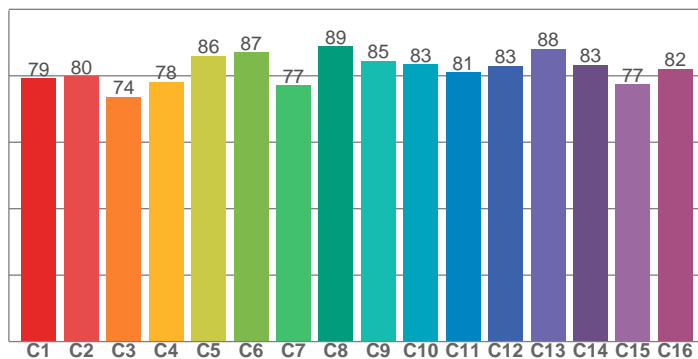


Power

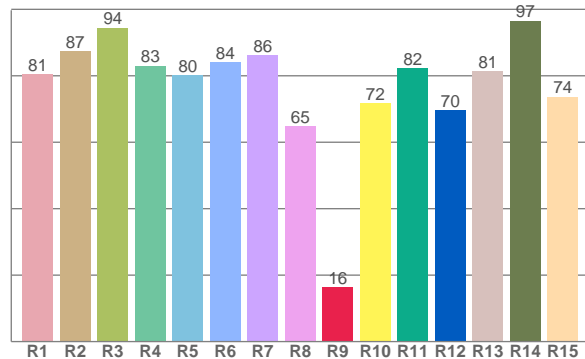




TM30: 81.9



CRI: 82.6 (R1-R8)



CRI R values, only R1-R8 are used to calculate final CRI value

R1	R2	R3	R4	R5	R6	R7	R8	R9	R10	R11	R12	R13	R14	R15
80.5	87.5	94.5	83.0	80.2	84.0	86.3	64.9	16.4	71.8	82.2	69.6	81.5	96.6	73.7

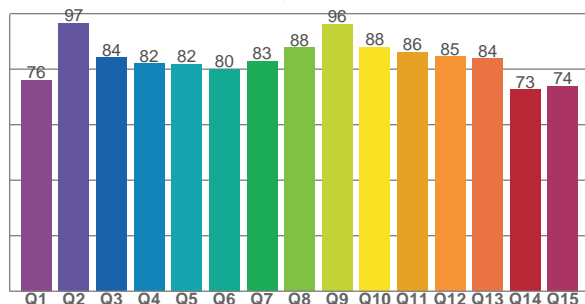
TM30 C values, 16 binned values out of total of 99 C values

C1	C2	C3	C4	C5	C6	C7	C8	C9	C10	C11	C12	C13	C14	C15	C16
79.2	79.9	73.6	78.1	86.0	87.1	77.1	88.8	84.5	83.4	81.1	82.9	88.0	83.2	77.5	82.1

CQS Q values

Q1	Q2	Q3	Q4	Q5	Q6	Q7	Q8	Q9	Q10	Q11	Q12	Q13	Q14	Q15
76.0	96.6	84.1	81.9	81.8	80.1	82.8	87.7	96.3	87.9	86.1	84.6	83.9	72.7	73.9

CQS: 82.3



Color parameters

Color temperature	Color rendering index	Red component	Color fidelity	Color gamut	Color quality scale	Color coordinate cie 1931	Color coordinate cie 1931	Color coordinate	Color coordinate	Color deviation from black body
CCT	CRI	CRI R9	TM30 Rf	TM30 Rg	CQS	x	y	u	v	Δuv
2998 K	82.6	16.4	81.9	98.6	82.3	0.441	0.412	0.250	0.350	0.0025

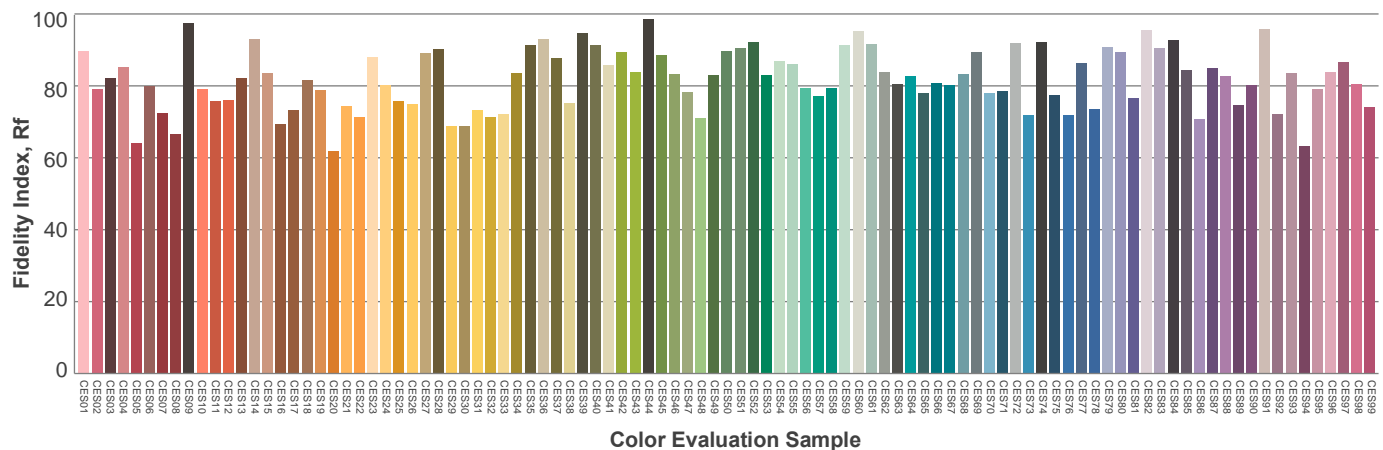
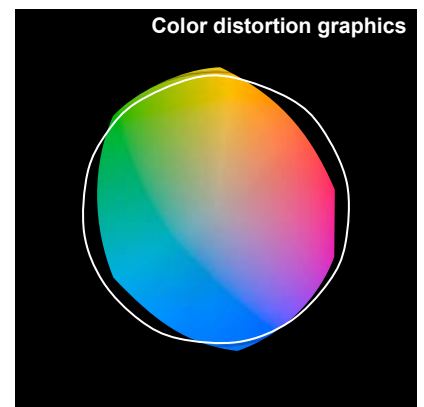
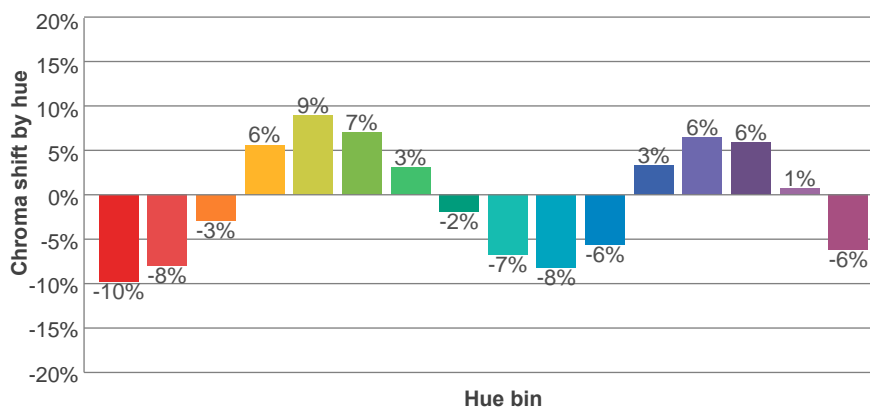
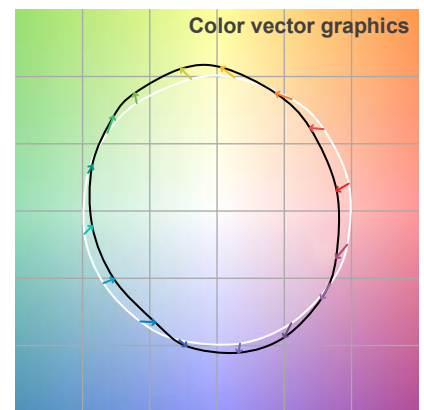
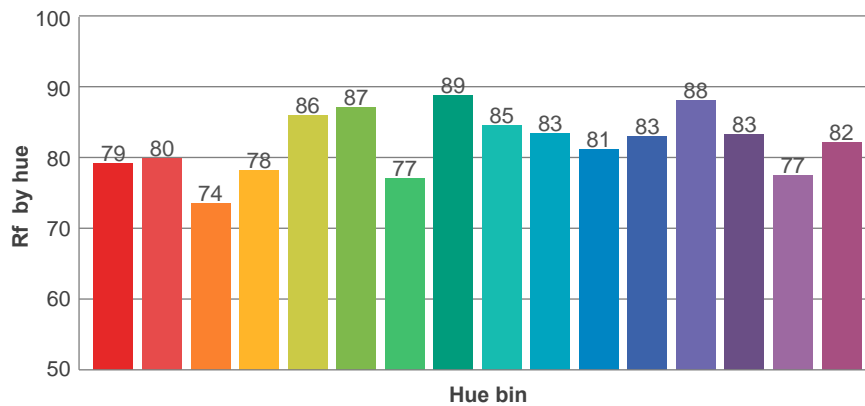
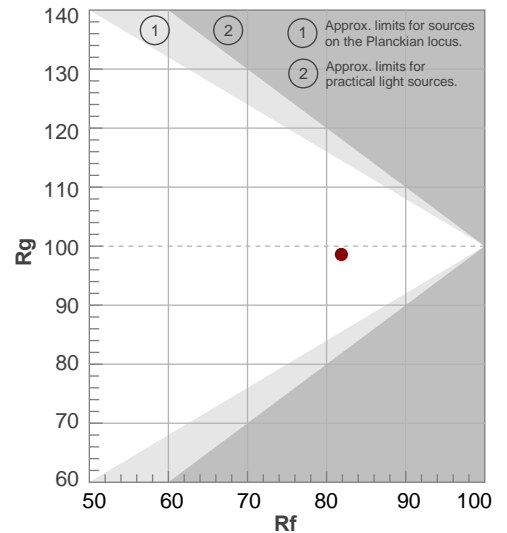
Rf 81.9

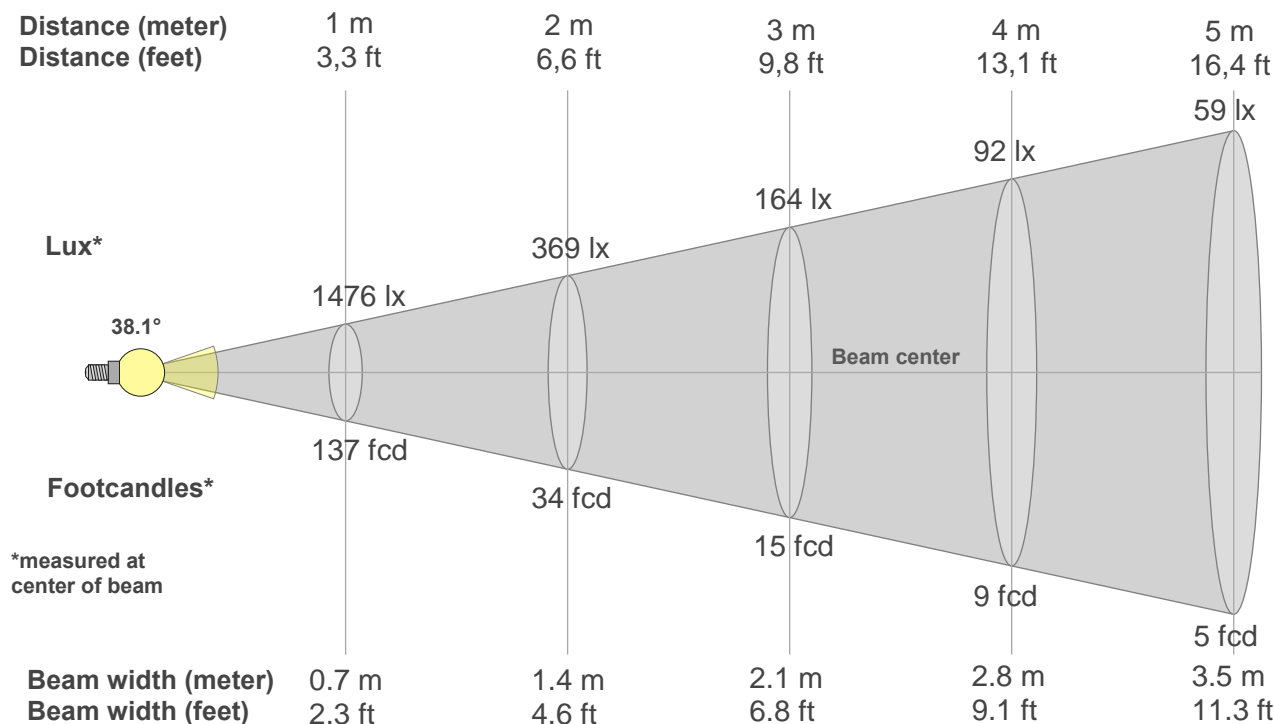
Fidelity index Rf

Rg 98.6

Gamut index Rg

Hue Bin	R _f	Graphic shifts (%)	
		Chroma	Hue
1	79	-10%	-3%
2	80	-8%	6%
3	74	-3%	12%
4	78	6%	11%
5	86	9%	6%
6	87	7%	-3%
7	77	3%	-13%
8	89	-2%	-6%
9	85	-7%	-5%
10	83	-8%	2%
11	81	-6%	10%
12	83	3%	6%
13	88	6%	-2%
14	83	6%	-10%
15	77	1%	-13%
16	82	-6%	-11%





Beam intensities from 1-20m

1m	2m	3m	4m	5m	6m	7m	8m	9m	10m	11m	12m	13m	14m	15m	16m	17m	18m	19m	20m
3.3ft	6.6ft	9.8ft	13.1ft	16.4ft	19.7ft	23ft	26.2ft	29.5ft	32.8ft	36.1ft	39.4ft	42.7ft	45.9ft	49.2ft	52.5ft	55.8ft	59.1ft	62.3ft	65.6ft
1476lx	369lx	164lx	92lx	59lx	41lx	30lx	23lx	18lx	15lx	12lx	10lx	9lx	8lx	7lx	6lx	5lx	5lx	4lx	4lx
137.2fcd	34.3fcd	15.2fcd	8.6fcd	5.5fcd	3.8fcd	2.8fcd	2.1fcd	1.7fcd	1.4fcd	1.1fcd	1fcd	0.8fcd	0.7fcd	0.6fcd	0.5fcd	0.5fcd	0.4fcd	0.4fcd	0.3fcd

Intensities in 0° c-plane

0°	2°	4°	6°	8°	10°	12°	14°	16°	18°	20°	22°	24°	26°	28°	30°	32°	34°	36°	38°
1476	1425	1337	1236	1076	916	790	677	572	488	405	332	261	202	167	132	123	117	110	102
100%	97%	91%	84%	73%	62%	53%	46%	39%	33%	27%	22%	18%	14%	11%	9%	8%	8%	7%	7%

Intensities in 90° c-plane

0°	2°	4°	6°	8°	10°	12°	14°	16°	18°	20°	22°	24°	26°	28°	30°	32°	34°	36°	38°
1476	1523	1511	1503	1500	1497	1537	1582	1588	1546	1504	1301	1096	888	678	475	366	257	188	144
100%	103%	102%	102%	102%	101%	104%	107%	108%	105%	102%	88%	74%	60%	46%	32%	25%	17%	13%	10%

Intensities in 180° c-plane

0°	2°	4°	6°	8°	10°	12°	14°	16°	18°	20°	22°	24°	26°	28°	30°	32°	34°	36°	38°
1476	1425	1337	1236	1076	916	790	677	572	488	405	332	261	202	167	132	123	117	110	102
100%	97%	91%	84%	73%	62%	53%	46%	39%	33%	27%	22%	18%	14%	11%	9%	8%	8%	7%	7%

Intensities in 270° c-plane

0°	2°	4°	6°	8°	10°	12°	14°	16°	18°	20°	22°	24°	26°	28°	30°	32°	34°	36°	38°
1476	1523	1511	1503	1500	1497	1537	1582	1588	1546	1504	1301	1096	888	678	475	366	257	188	144
100%	103%	102%	102%	102%	101%	104%	107%	108%	105%	102%	88%	74%	60%	46%	32%	25%	17%	13%	10%

Beam angle 50%	Field angle 10%	Cutoff angle 2,5%	Intensity ratio in 120° cone	Intensity ratio in 90° cone
38.1°	68.3°	107.1°	97.5%	91.1%