

Light efficiency:

82 Lumen/Watt

Light quality:

CRI: 80.7

Color temperature:

2935 K

Output: 1464 lm

Peak: 2098 cd

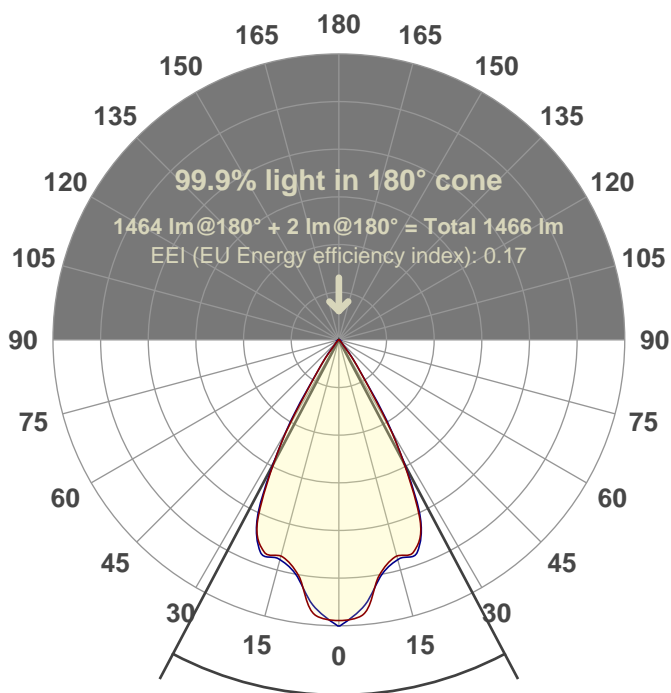
Power: 17.9 W

PF: 0.98



**112250-XTM19-20LM-30K-83-SA60-UNV-
ELV-WH-CLR**

Date and time:
12/11/2019 3:11:18 PM



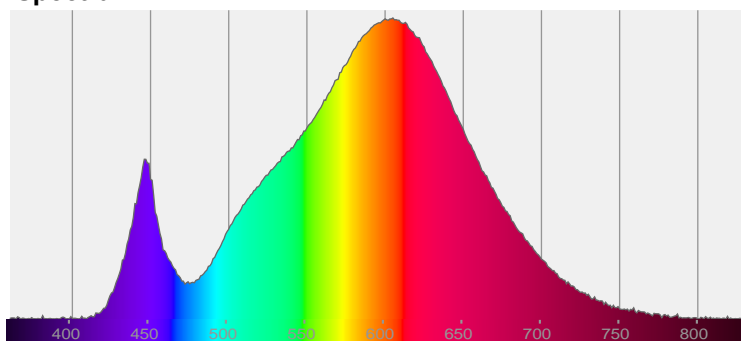
Beam angle

55.7°

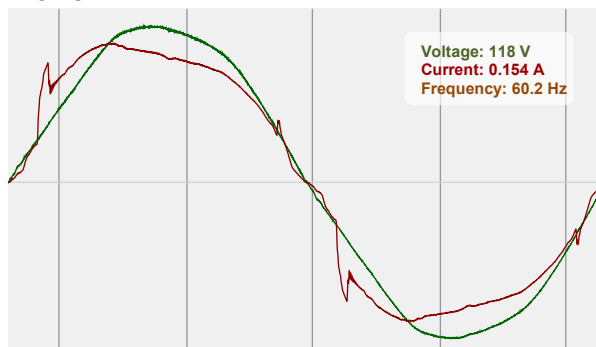


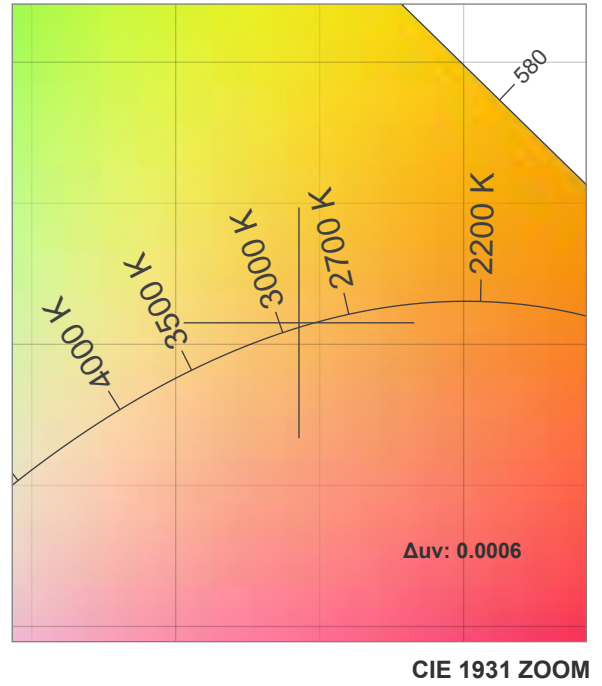
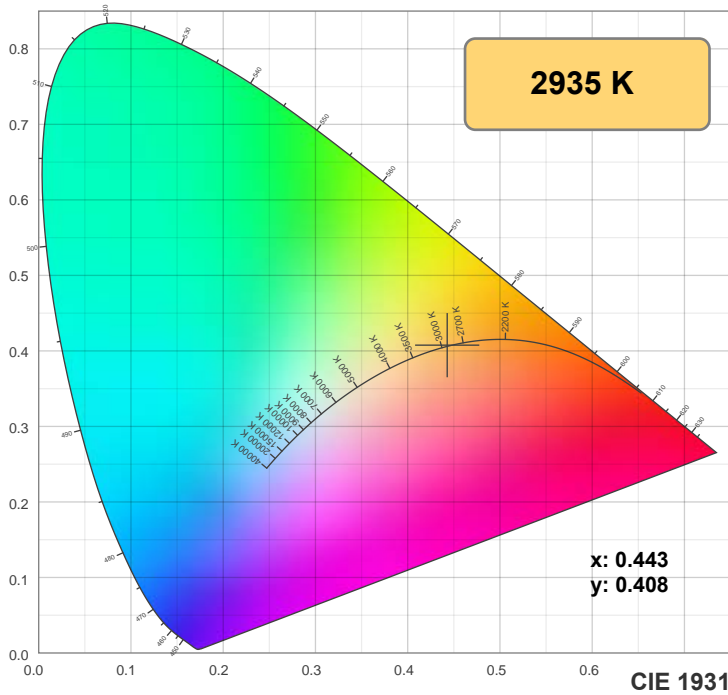
CIE 1931
x: 0.443
y: 0.408

Spectra

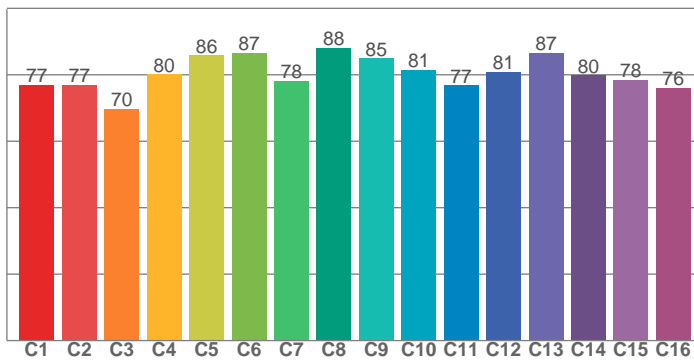


Power

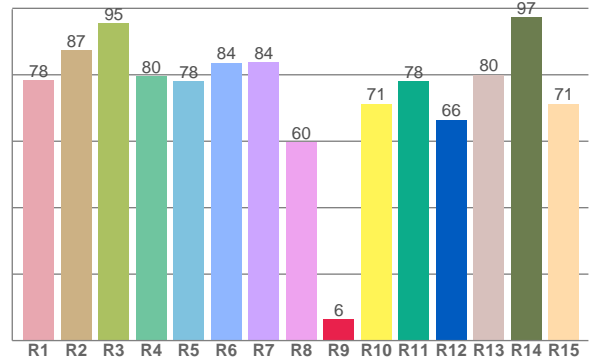




TM30: 80.2



CRI: 80.7 (R1-R8)



CRI R values, only R1-R8 are used to calculate final CRI value

R1	R2	R3	R4	R5	R6	R7	R8	R9	R10	R11	R12	R13	R14	R15
78.4	87.4	95.5	79.6	78.0	83.6	83.8	59.6	6.4	71.3	78.0	66.5	80.0	97.3	71.3

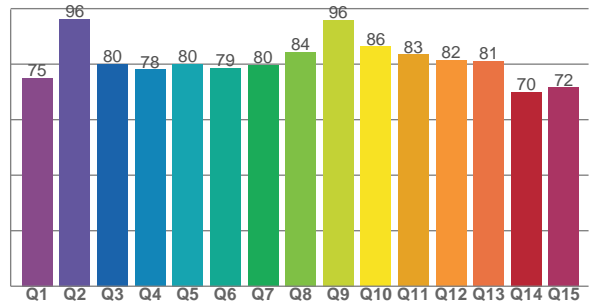
TM30 C values, 16 binned values out of total of 99 C values

C1	C2	C3	C4	C5	C6	C7	C8	C9	C10	C11	C12	C13	C14	C15	C16
77.0	76.9	69.7	80.1	85.9	86.5	78.1	88.1	84.9	81.5	76.8	80.9	86.6	79.8	78.5	76.1

CQS Q values

Q1	Q2	Q3	Q4	Q5	Q6	Q7	Q8	Q9	Q10	Q11	Q12	Q13	Q14	Q15
75.1	96.3	80.0	78.0	80.1	78.7	79.6	84.3	95.8	86.3	83.4	81.5	81.0	70.0	71.6

CQS: 80.0



Color parameters

Color temperature	Color rendering index	Red component	Color fidelity	Color gamut	Color quality scale	Color coordinate cie 1931	Color coordinate cie 1931	Color coordinate	Color coordinate	Color deviation from black body
CCT	CRI	CRI R9	TM30 Rf	TM30 Rg	CQS	x	y	u	v	Δuv
2935 K	80.7	6.4	80.2	97.9	80.0	0.443	0.408	0.253	0.349	0.0006

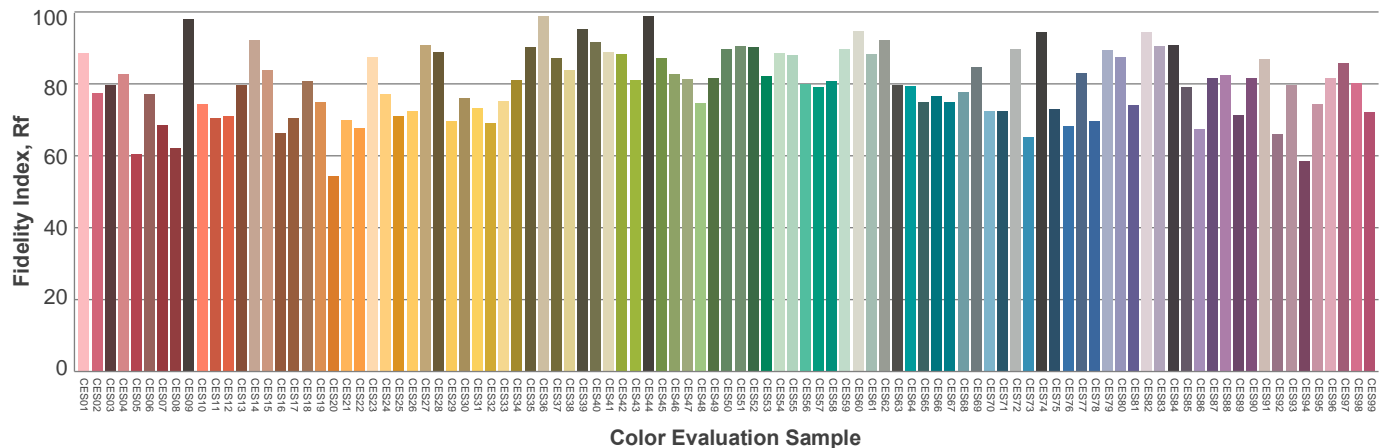
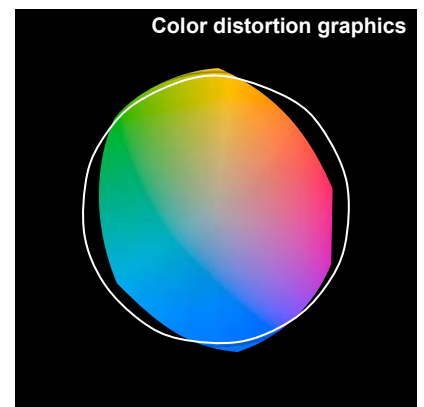
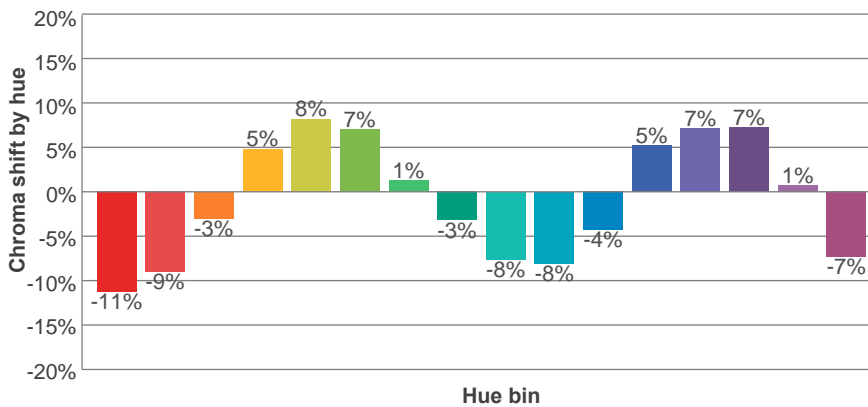
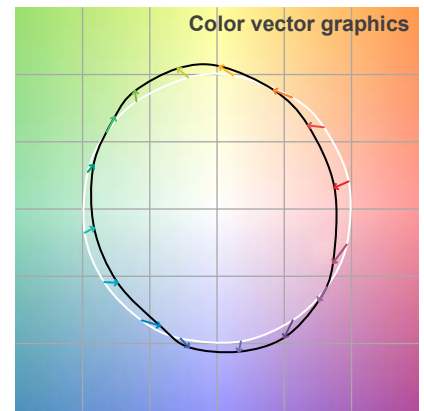
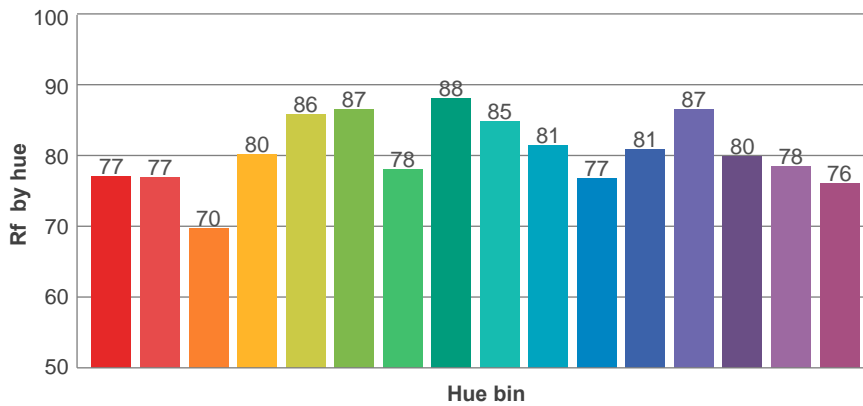
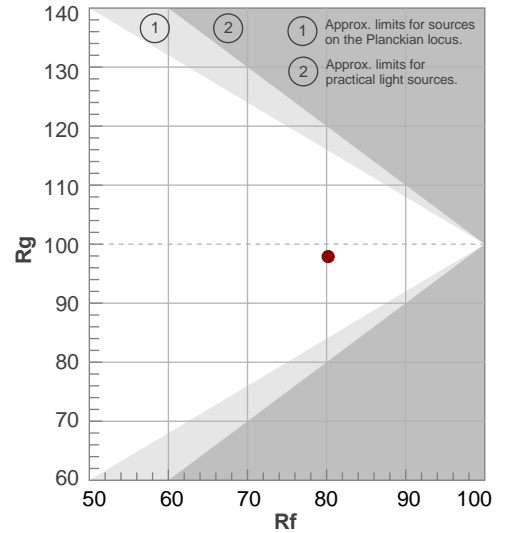
Rf 80.2

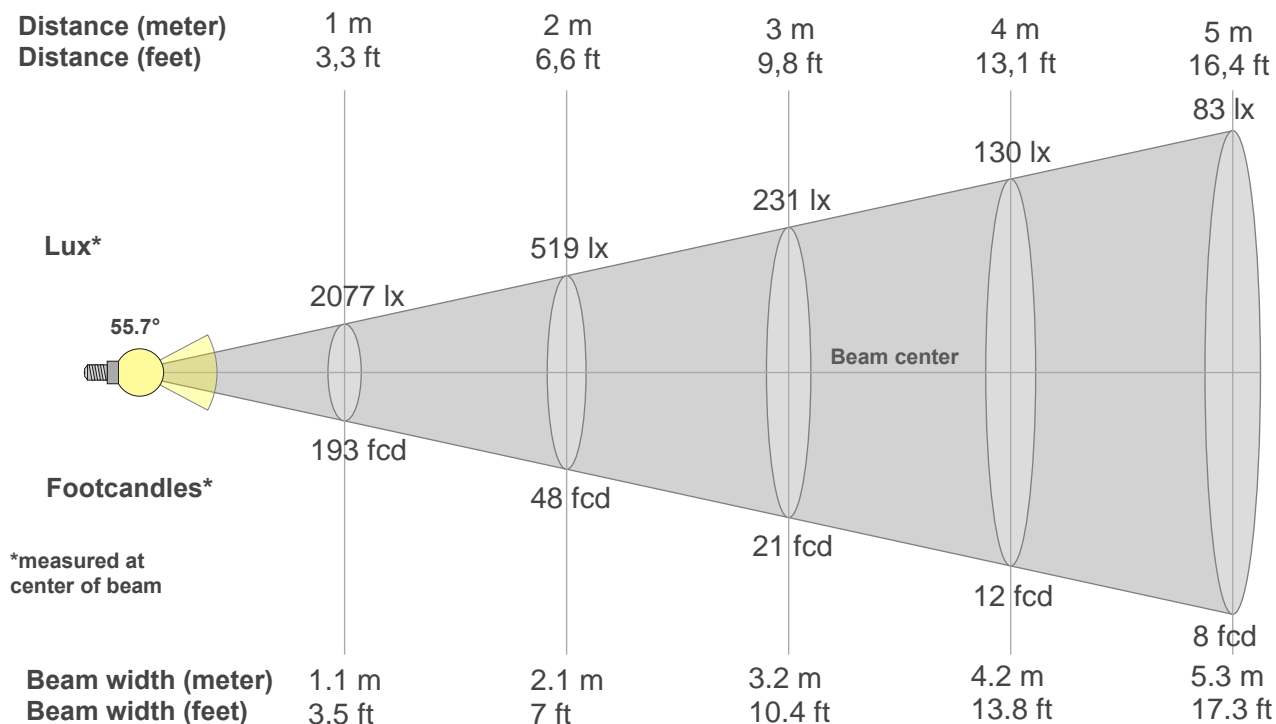
Fidelity index Rf

Rg 97.9

Gamut index Rg

Hue Bin	R _f	Graphic shifts (%)	
		Chroma	Hue
1	77	-11%	-3%
2	77	-9%	8%
3	70	-3%	14%
4	80	5%	11%
5	86	8%	6%
6	87	7%	-3%
7	78	1%	-12%
8	88	-3%	-6%
9	85	-8%	-2%
10	81	-8%	6%
11	77	-4%	14%
12	81	5%	7%
13	87	7%	-3%
14	80	7%	-12%
15	78	1%	-12%
16	76	-7%	-15%





Beam intensities from 1-20m

1m	2m	3m	4m	5m	6m	7m	8m	9m	10m	11m	12m	13m	14m	15m	16m	17m	18m	19m	20m
3.3ft	6.6ft	9.8ft	13.1ft	16.4ft	19.7ft	23ft	26.2ft	29.5ft	32.8ft	36.1ft	39.4ft	42.7ft	45.9ft	49.2ft	52.5ft	55.8ft	59.1ft	62.3ft	65.6ft
2077lx	519lx	231lx	130lx	83lx	58lx	42lx	32lx	26lx	21lx	17lx	14lx	12lx	11lx	9lx	8lx	7lx	6lx	6lx	5lx
193fcd	48.2fcd	21.4fcd	12.1fcd	7.7fcd	5.4fcd	3.9fcd	3fcd	2.4fcd	1.9fcd	1.6fcd	1.3fcd	1.1fcd	1fcd	0.9fcd	0.8fcd	0.7fcd	0.6fcd	0.5fcd	0.5fcd

Intensities in 0° c-plane

0°	2°	4°	6°	8°	10°	12°	14°	16°	18°	20°	22°	24°	26°	28°	30°	32°	34°	36°	38°
2077	2029	2029	1959	1847	1748	1702	1656	1646	1648	1624	1541	1459	1241	1003	763	521	280	191	103
100%	98%	98%	94%	89%	84%	82%	80%	79%	79%	78%	74%	70%	60%	48%	37%	25%	13%	9%	5%

Intensities in 90° c-plane

0°	2°	4°	6°	8°	10°	12°	14°	16°	18°	20°	22°	24°	26°	28°	30°	32°	34°	36°	38°
2077	2050	1997	1937	1852	1767	1721	1688	1664	1662	1659	1563	1449	1278	1025	771	549	327	186	117
100%	99%	96%	93%	89%	85%	83%	81%	80%	80%	80%	75%	70%	62%	49%	37%	26%	16%	9%	6%

Intensities in 180° c-plane

0°	2°	4°	6°	8°	10°	12°	14°	16°	18°	20°	22°	24°	26°	28°	30°	32°	34°	36°	38°
2077	2029	2029	1959	1847	1748	1702	1656	1646	1648	1624	1541	1459	1241	1003	763	521	280	191	103
100%	98%	98%	94%	89%	84%	82%	80%	79%	79%	78%	74%	70%	60%	48%	37%	25%	13%	9%	5%

Intensities in 270° c-plane

0°	2°	4°	6°	8°	10°	12°	14°	16°	18°	20°	22°	24°	26°	28°	30°	32°	34°	36°	38°
2077	2050	1997	1937	1852	1767	1721	1688	1664	1662	1659	1563	1449	1278	1025	771	549	327	186	117
100%	99%	96%	93%	89%	85%	83%	81%	80%	80%	80%	75%	70%	62%	49%	37%	26%	16%	9%	6%

Beam angle 50°	Field angle 10°	Cutoff angle 2,5%	Intensity ratio in 120° cone	Intensity ratio in 90° cone
{B_ANG}°	71.2°	81°	98.8%	97.9%