

Light efficiency:

81 Lumen/Watt

Light quality:

CRI: 83.9

Color temperature:

3043 K

Output: 2073 lm

Peak: 1696 cd

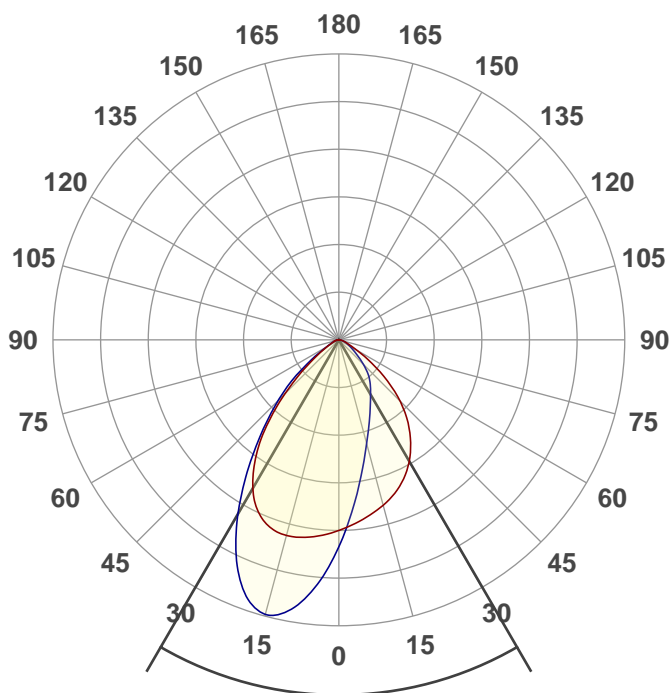
Power: 25.5 W

PF: 0.97



**NU3-RW-SW-27LM-30K-80-WW-120-DIM10-NC-WH-WH**

Date and time:  
10/21/2019 11:43:52 AM



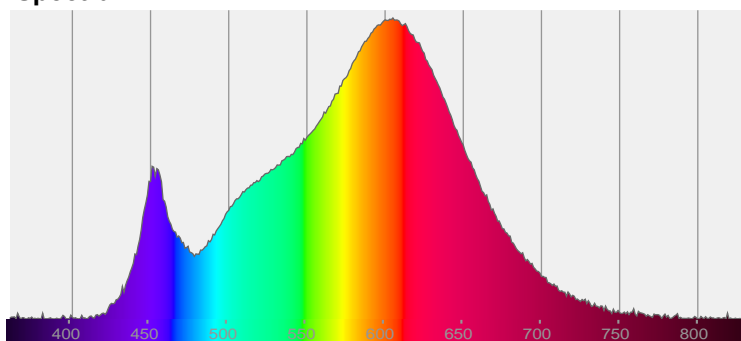
Beam angle

**60.2°**

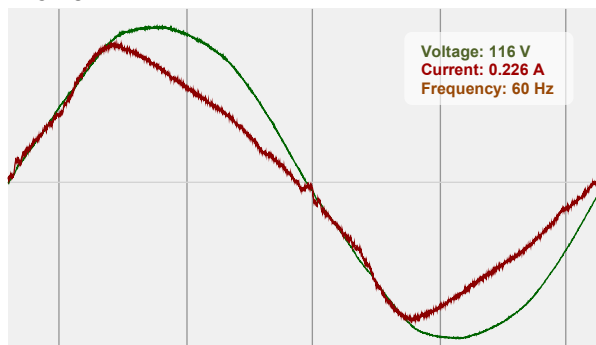


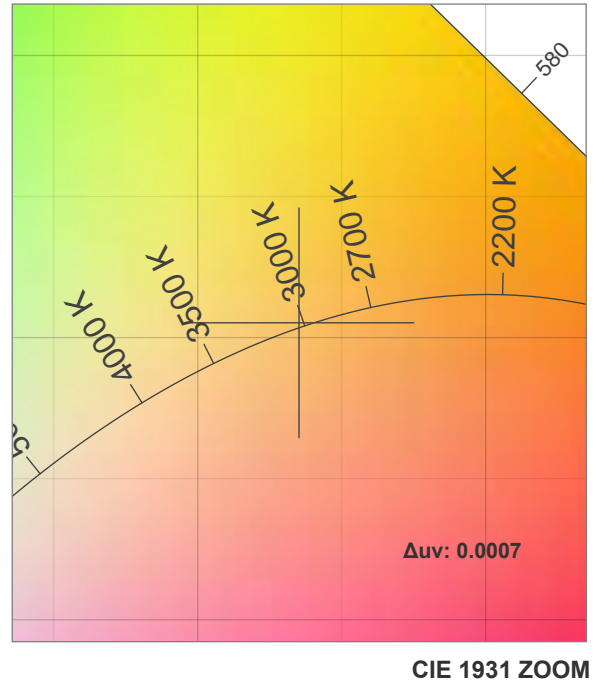
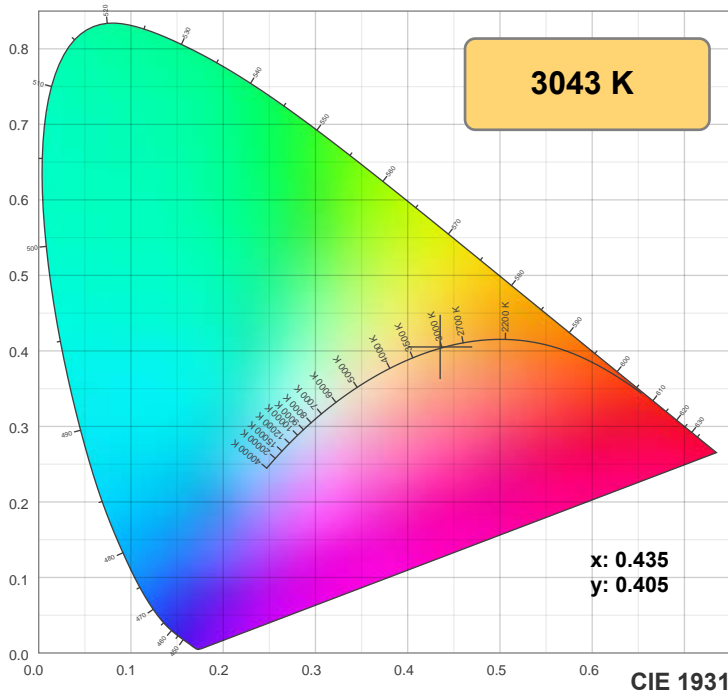
CIE 1931  
x: 0.435  
y: 0.405

Spectra

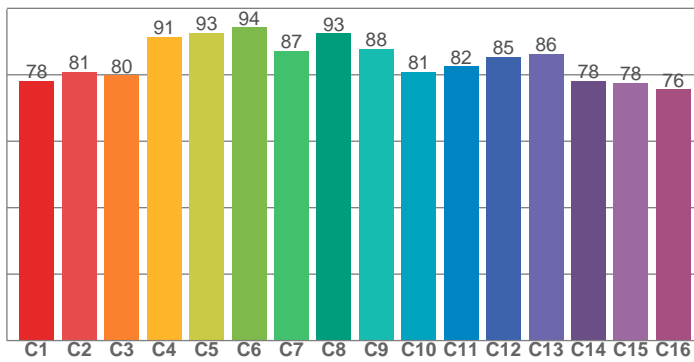


Power

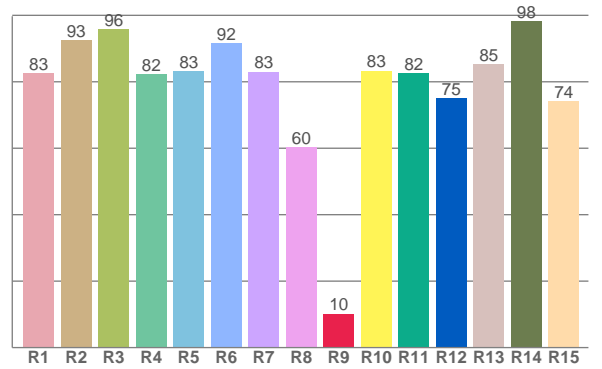




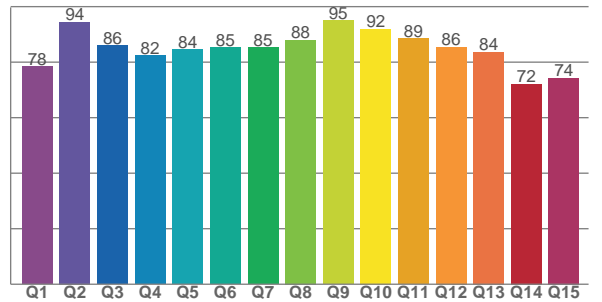
TM30: 84.6



CRI: 83.9 (R1-R8)



CQS: 83.6



CRI R values, only R1-R8 are used to calculate final CRI value

R1	R2	R3	R4	R5	R6	R7	R8	R9	R10	R11	R12	R13	R14	R15
82.6	92.6	95.8	82.3	83.1	91.6	83.1	60.3	10.2	83.3	82.5	75.1	85.2	98.3	74.2

TM30 C values, 16 binned values out of total of 99 C values

C1	C2	C3	C4	C5	C6	C7	C8	C9	C10	C11	C12	C13	C14	C15	C16
78.2	80.9	79.9	91.4	92.7	94.2	87.2	92.5	87.9	81.0	82.5	85.4	86.3	78.1	77.6	75.6

CQS Q values

Q1	Q2	Q3	Q4	Q5	Q6	Q7	Q8	Q9	Q10	Q11	Q12	Q13	Q14	Q15
78.4	94.4	85.9	82.4	84.5	85.2	85.3	88.1	95.0	91.9	88.5	85.5	83.7	72.1	74.3

## Color parameters

Color temperature	Color rendering index	Red component	Color fidelity	Color gamut	Color quality scale	Color coordinate cie 1931	Color coordinate cie 1931	Color coordinate	Color coordinate	Color deviation from black body
CCT	CRI	CRI R9	TM30 Rf	TM30 Rg	CQS	x	y	u	v	$\Delta uv$
3043 K	83.9	10.2	84.6	94.9	83.6	0.435	0.405	0.249	0.348	0.0007

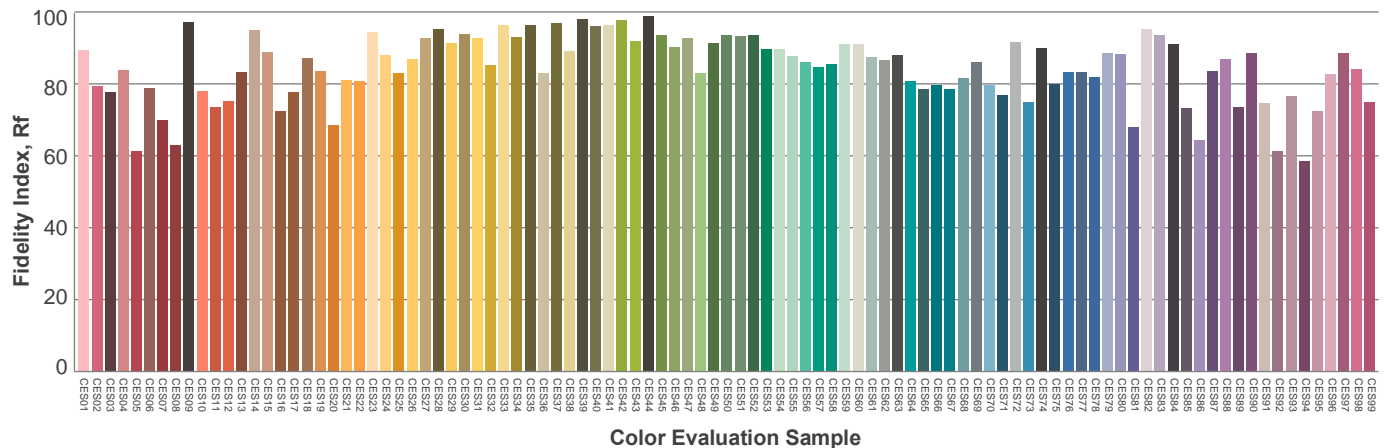
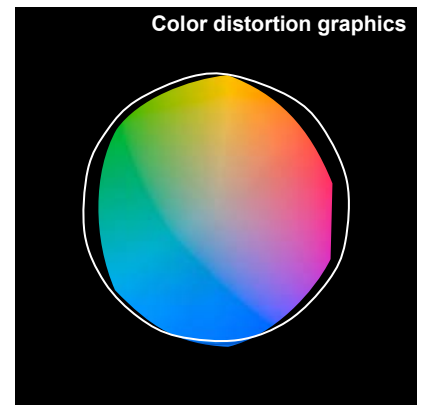
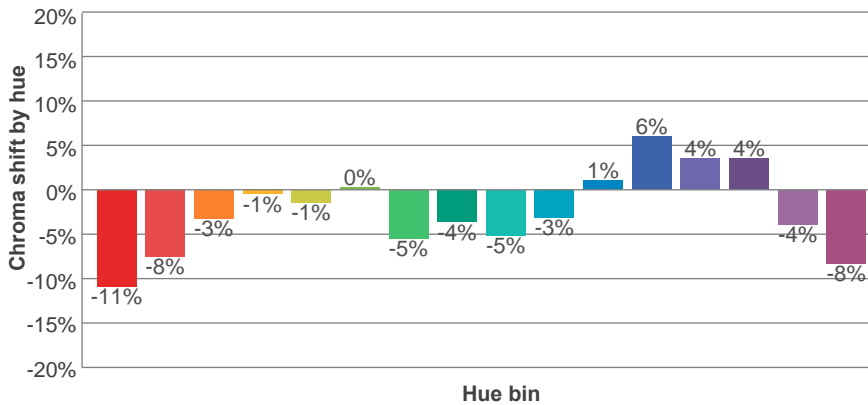
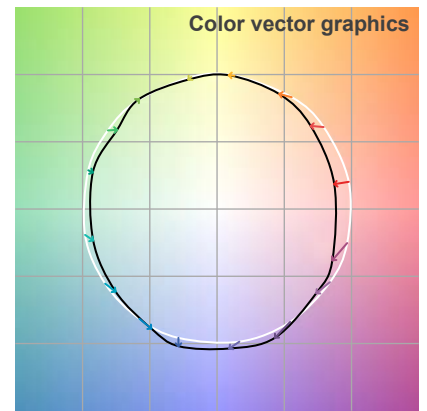
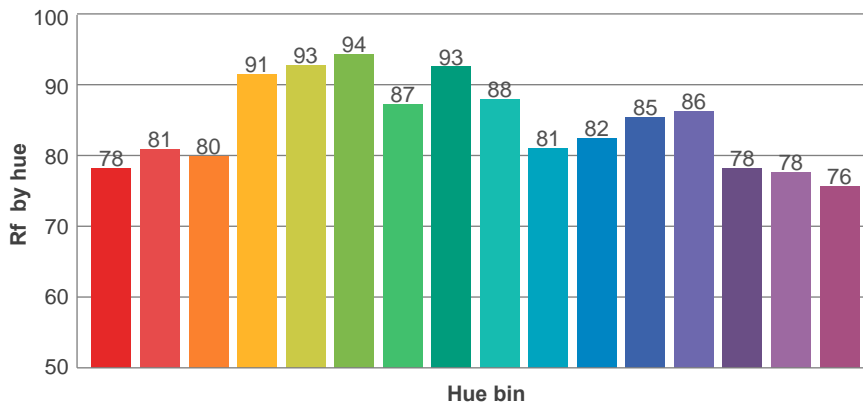
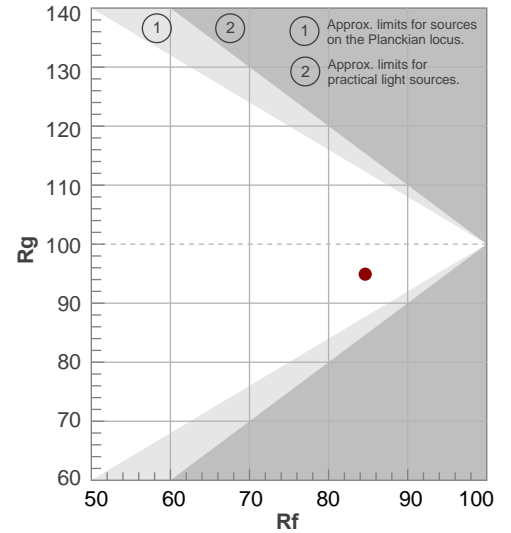
**Rf 84.6**

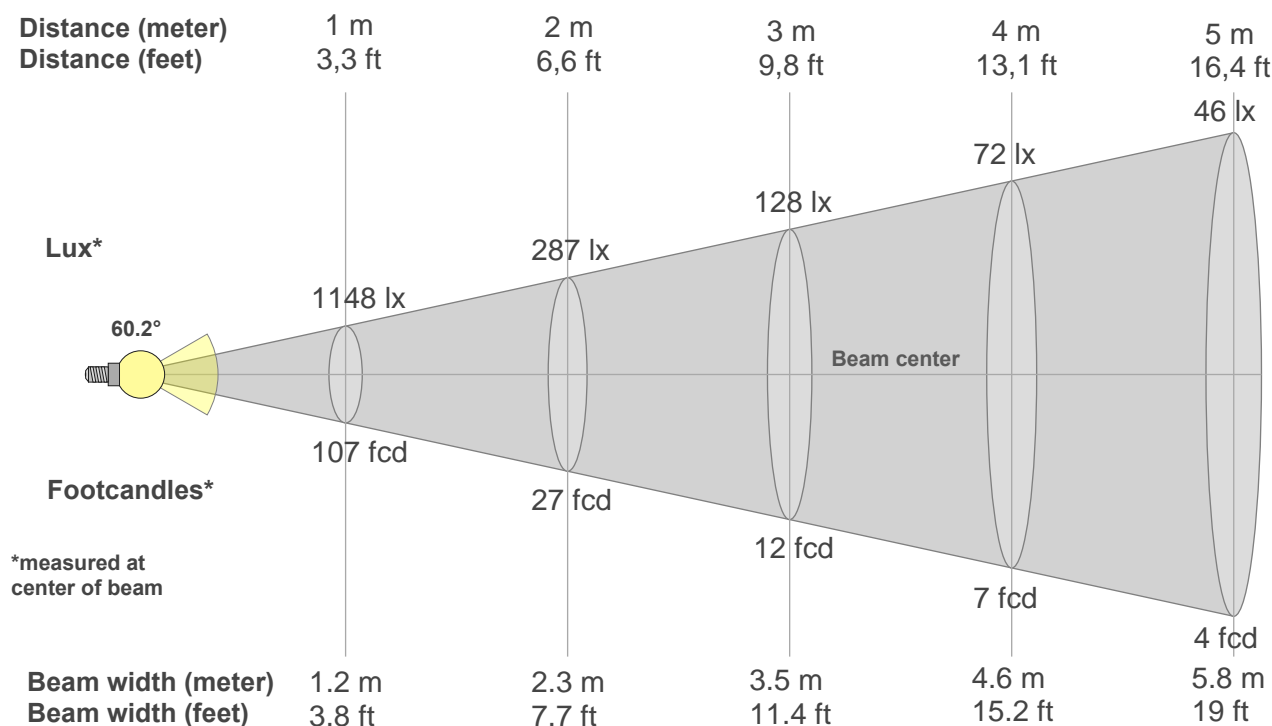
Fidelity index Rf

**Rg 94.9**

Gamut index Rg

Hue Bin	R <sub>f</sub>	Graphic shifts (%)	
		Chroma	Hue
1	78	-11%	0%
2	81	-8%	6%
3	80	-3%	9%
4	91	-1%	4%
5	93	-1%	2%
6	94	0%	-2%
7	87	-5%	-4%
8	93	-4%	1%
9	88	-5%	5%
10	81	-3%	9%
11	82	1%	11%
12	85	6%	1%
13	86	4%	-8%
14	78	4%	-16%
15	78	-4%	-12%
16	76	-8%	-15%





**Beam intensities from 1-20m**

1m	2m	3m	4m	5m	6m	7m	8m	9m	10m	11m	12m	13m	14m	15m	16m	17m	18m	19m	20m
3.3ft	6.6ft	9.8ft	13.1ft	16.4ft	19.7ft	23ft	26.2ft	29.5ft	32.8ft	36.1ft	39.4ft	42.7ft	45.9ft	49.2ft	52.5ft	55.8ft	59.1ft	62.3ft	65.6ft
1148lx	287lx	128lx	72lx	46lx	32lx	23lx	18lx	14lx	11lx	9lx	8lx	7lx	6lx	5lx	4lx	4lx	4lx	3lx	3lx
106.6fcd	26.7fcd	11.8fcd	6.7fcd	4.3fcd	3fcd	2.2fcd	1.7fcd	1.3fcd	1.1fcd	0.9fcd	0.7fcd	0.6fcd	0.5fcd	0.5fcd	0.4fcd	0.4fcd	0.3fcd	0.3fcd	0.3fcd

**Intensities in 0° c-plane**

0°	5°	10°	15°	20°	25°	30°	35°	40°	45°	50°	55°	60°	65°	70°	75°	80°	85°	90°	95°
1148	1097	1058	1018	970	910	835	743	637	513	372	234	128	71	44	28	17	10	4	0
100%	96%	92%	89%	85%	79%	73%	65%	56%	45%	32%	20%	11%	6%	4%	2%	2%	1%	0%	0%

**Intensities in 90° c-plane**

0°	5°	10°	15°	20°	25°	30°	35°	40°	45°	50°	55°	60°	65°	70°	75°	80°	85°	90°	95°
1148	997	795	640	528	442	377	326	274	207	144	102	73	54	38	22	11	5	2	0
100%	87%	69%	56%	46%	39%	33%	28%	24%	18%	13%	9%	6%	5%	3%	2%	1%	0%	0%	0%

**Intensities in 180° c-plane**

0°	5°	10°	15°	20°	25°	30°	35°	40°	45°	50°	55°	60°	65°	70°	75°	80°	85°	90°	95°
1148	1166	1191	1201	1184	1126	1018	861	669	458	275	151	83	49	30	18	10	3	0	0
100%	102%	104%	105%	103%	98%	89%	75%	58%	40%	24%	13%	7%	4%	3%	2%	1%	0%	0%	0%

**Intensities in 270° c-plane**

0°	5°	10°	15°	20°	25°	30°	35°	40°	45°	50°	55°	60°	65°	70°	75°	80°	85°	90°	95°
1148	1455	1621	1682	1612	1438	1201	945	710	512	338	181	87	51	33	18	8	2	0	0
100%	127%	141%	147%	140%	125%	105%	82%	62%	45%	29%	16%	8%	4%	3%	2%	1%	0%	0%	0%

Beam angle 50%	Field angle 10%	Cutoff angle 2,5%	Intensity ratio in 120° cone	Intensity ratio in 90° cone
{B_ANG}°	109.2°	138.6°	95.1%	77.2%