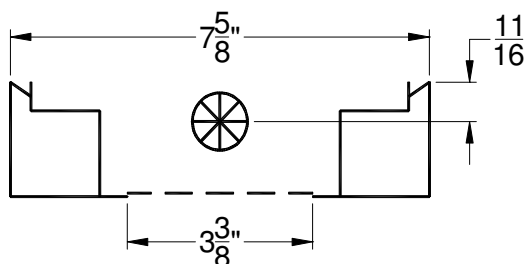
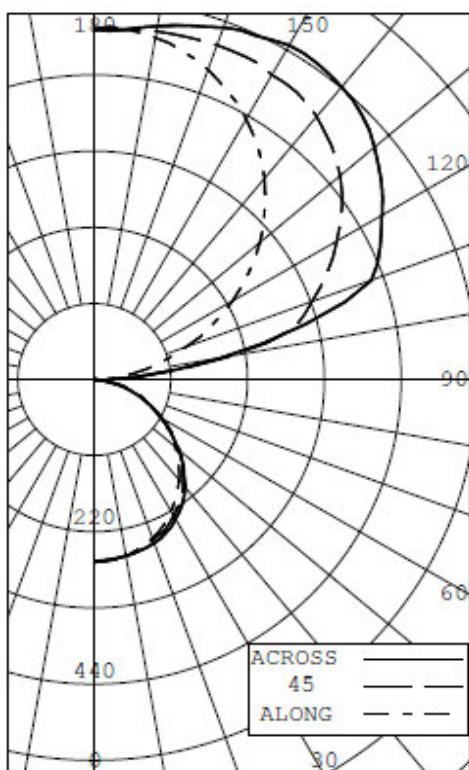




INDEPENDENT TEST LABORATORY REPORT No. 29709

FINELITE - 4 FT FLUORESCENT LUMINAIRE, CAT# S16-DCO-1T8-91W-OPEN
WITH WHITE INTERIOR AND WHITE FLAT PLASTIC LENS
ONE SYLVANIA 32 WATT T8 LAMP, CAT# FO32/835/ECO. LUMEN RATING = 3100 LMS.
ONE SYLVANIA QHE1X32T8/UNV ISN SC BALLAST OPERATING AT 120 VAC AND 29.5 WATTS



INTENSITY (CANDLEPOWER) SUMMARY						OUTPUT LUMENS
ANGLE	ALONG	22.5	45	67.5	ACROSS	
0	263	263	263	263	263	
5	263	262	262	263	261	25
15	253	252	254	257	256	72
25	233	234	239	244	244	110
35	205	207	214	219	219	133
45	170	175	180	182	181	137
55	131	135	136	135	134	120
65	92	92	91	90	89	90
75	53	50	48	47	46	51
85	12	11	10	9	9	13
90	0	0	0	0	0	
95	20	79	72	64	61	75
105	97	198	299	317	314	262
115	186	283	369	430	452	346
125	271	353	434	484	502	370
135	346	405	481	527	543	358
145	410	446	507	545	558	310
155	458	477	515	541	549	235
165	491	497	513	524	530	145
175	509	506	508	507	508	49
180	506	506	506	506	506	

ZONAL LUMENS AND PERCENTAGES

ZONE	LUMENS	% LAMP	% LUMINAIRE
0-30	207	6.67	7.13
0-40	340	10.96	11.71
0-60	597	19.26	20.58
0-90	751	24.21	25.87
40-90	411	13.25	14.15
60-90	154	4.95	5.29
90-180	2151	69.39	74.13
0-180	2902	93.60	100.00

** EFFICIENCY: 93.6% **

LUMINOUS LENGTH: 42.870 INS
WIDTH: 3.375 INS

LUMINANCE SUMMARY CD./SQ.M.

ANGLE	ALONG	45	ACROSS
45	2579	2729	2751
55	2455	2556	2513
65	2327	2309	2253
75	2176	1979	1906
85	1495	1225	1094

CERTIFIED BY:

Ryder Turney

DATE:
OCT 19, 2011

PREPARED FOR:

FINELITE
UNION CITY, CA

TESTED IN ACCORDANCE WITH IES PROCEDURES.

LIGHTING SCIENCES, INC.
7826 E. EVANS RD.
SCOTTSDALE, AZ, USA 85260

INDEPENDENT TEST LABORATORY REPORT No. 29709

FINELITE - 4 FT FLUORESCENT LUMINAIRE, CAT# S16-DCO-1T8-91W-OPEN
WITH WHITE INTERIOR AND WHITE FLAT PLASTIC LENS
ONE SYLVANIA 32 WATT T8 LAMP, CAT# FO32/835/ECO. LUMEN RATING = 3100 LMS.
ONE SYLVANIA QHE1X32T8/UNV ISN SC BALLAST OPERATING AT 120 VAC AND 29.5 WATTS

INTENSITY (CANDLEPOWER) DATA

ANGLE	PLANE						OUTPUT LUMENS
	ALONG	22.5	45	67.5	ACROSS	AVERAGE	
0	263	263	263	263	263	263	
5	263	262	262	263	261	262	25
10	259	258	259	261	259	259	
15	253	252	254	257	256	254	72
20	244	244	247	252	252	248	
25	233	234	239	244	244	239	110
30	220	221	228	233	233	227	
35	205	207	214	219	219	213	133
40	188	192	198	202	202	197	
45	170	175	180	182	181	178	137
50	151	156	159	159	158	157	
55	131	135	136	135	134	135	120
60	111	114	113	112	111	113	
65	92	92	91	90	89	91	90
70	73	71	69	68	67	69	
75	53	50	48	47	46	48	51
80	32	30	28	27	26	29	
85	12	11	10	9	9	10	13
90	0	0	0	0	0	0	
95	20	79	72	64	61	64	75
100	56	156	193	185	183	163	
105	97	198	299	317	314	255	262
110	141	240	334	403	422	315	
115	186	283	369	430	452	350	346
120	229	321	402	459	477	384	
125	271	353	434	484	502	415	370
130	310	381	460	508	524	442	
135	346	405	481	527	543	464	358
140	379	426	497	538	553	482	
145	410	446	507	545	558	496	310
150	436	464	509	544	559	504	
155	458	477	515	541	549	509	235
160	477	489	515	533	541	512	
165	491	497	513	524	530	511	145
170	502	502	511	516	519	510	
175	509	506	508	507	508	507	49
180	506	506	506	506	506	506	

LIGHTING SCIENCES, INC.
7826 E. EVANS RD.
SCOTTSDALE, AZ, USA 85260

INDEPENDENT TEST LABORATORY REPORT No. 29709

FINELITE - 4 FT FLUORESCENT LUMINAIRE, CAT# S16-DCO-1T8-91W-OPEN
WITH WHITE INTERIOR AND WHITE FLAT PLASTIC LENS
ONE SYLVANIA 32 WATT T8 LAMP, CAT# FO32/835/ECO. LUMEN RATING = 3100 LMS.
ONE SYLVANIA QHE1X32T8/UNV ISN SC BALLAST OPERATING AT 120 VAC AND 29.5 WATTS

AVERAGE LUMINANCE DATA

CD./SQ.M (FOOTLAMBERTS)

ANGLE	ALONG		22.5		45		67.5		ACROSS	
0	2821(823)	2821(823)	2821(823)	2821(823)	2821(823)
30	2718(793)	2746(801)	2828(825)	2890(843)	2888(842)
40	2632(768)	2694(786)	2774(809)	2831(826)	2822(823)
45	2579(752)	2652(774)	2729(796)	2762(806)	2751(802)
50	2519(735)	2604(760)	2644(771)	2653(774)	2629(767)
55	2455(716)	2527(737)	2556(746)	2534(739)	2513(733)
60	2386(696)	2447(714)	2429(709)	2403(701)	2377(693)
65	2327(679)	2345(684)	2309(674)	2276(664)	2253(657)
70	2282(666)	2230(651)	2171(633)	2124(619)	2091(610)
75	2176(635)	2074(605)	1979(577)	1939(566)	1906(556)
80	1962(572)	1863(544)	1734(506)	1667(486)	1630(475)
85	1495(436)	1414(412)	1225(357)	1141(333)	1094(319)

LIGHTING SCIENCES, INC.
7826 E. EVANS RD.
SCOTTSDALE, AZ, USA 85260

INDEPENDENT TEST LABORATORY REPORT No. 29709

FINELITE - 4 FT FLUORESCENT LUMINAIRE, CAT# S16-DCO-1T8-91W-OPEN
WITH WHITE INTERIOR AND WHITE FLAT PLASTIC LENS
ONE SYLVANIA 32 WATT T8 LAMP, CAT# FO32/835/ECO. LUMEN RATING = 3100 LMS.
ONE SYLVANIA QHE1X32T8/UNV ISN SC BALLAST OPERATING AT 120 VAC AND 29.5 WATTS

COEFFICIENTS OF UTILIZATION

ZONAL CAVITY METHOD

EFFECTIVE FLOOR CAVITY REFLECTANCE = .20

CC WALL	90				80				70				50				30				10				0
	70	50	30	10	70	50	30	10	70	50	30	10	50	30	10	50	30	10	50	30	10	50	30	10	0
RCR																									
0	1.051	1.051	1.051	1.05	0.950	0.950	0.950	0.95	0.850	0.850	0.850	0.85	0.650	0.650	0.65	0.480	0.480	0.48	0.320	0.320	0.32	0.24			
1	0.960	0.920	0.880	0.85	0.870	0.830	0.790	0.76	0.770	0.740	0.710	0.68	0.570	0.560	0.54	0.420	0.410	0.40	0.280	0.280	0.27	0.21			
2	0.870	0.800	0.740	0.68	0.790	0.720	0.670	0.62	0.700	0.650	0.600	0.56	0.500	0.470	0.45	0.370	0.350	0.34	0.250	0.240	0.23	0.18			
3	0.800	0.700	0.630	0.57	0.720	0.640	0.570	0.52	0.640	0.570	0.520	0.47	0.450	0.410	0.38	0.330	0.310	0.29	0.220	0.210	0.20	0.15			
4	0.730	0.620	0.540	0.48	0.660	0.560	0.490	0.44	0.580	0.510	0.450	0.40	0.400	0.350	0.32	0.290	0.270	0.24	0.200	0.180	0.17	0.13			
5	0.670	0.530	0.470	0.41	0.600	0.490	0.430	0.37	0.530	0.450	0.380	0.34	0.350	0.310	0.27	0.260	0.230	0.21	0.180	0.160	0.15	0.11			
6	0.610	0.490	0.410	0.35	0.550	0.440	0.370	0.32	0.490	0.400	0.340	0.29	0.310	0.270	0.24	0.230	0.200	0.18	0.160	0.140	0.13	0.10			
7	0.560	0.440	0.360	0.30	0.510	0.400	0.330	0.28	0.450	0.360	0.300	0.25	0.280	0.240	0.20	0.210	0.180	0.16	0.140	0.120	0.11	0.08			
8	0.520	0.390	0.310	0.26	0.470	0.360	0.290	0.24	0.420	0.320	0.260	0.22	0.250	0.210	0.18	0.190	0.160	0.14	0.130	0.110	0.10	0.07			
9	0.480	0.350	0.280	0.23	0.430	0.320	0.250	0.21	0.380	0.290	0.230	0.19	0.230	0.180	0.15	0.170	0.140	0.12	0.120	0.100	0.08	0.06			
10	0.440	0.320	0.250	0.20	0.400	0.290	0.230	0.18	0.360	0.260	0.210	0.17	0.210	0.170	0.14	0.160	0.130	0.10	0.110	0.090	0.07	0.05			

LUMINAIRE INPUT WATTS 29.5

LABORATORY RESULTS MAY NOT BE REPRESENTATIVE OF FIELD PERFORMANCE.
BALLAST AND FIELD FACTORS HAVE NOT BEEN APPLIED.

TEST DISTANCE EXCEEDS FIVE TIMES THE GREATEST
LUMINOUS OPENING OF LUMINAIRE.