

Light efficiency:

85 Lumen/Watt

Light quality:

CRI: 96.6

Color temperature:

3031 K

Output: 1192 lm

Peak: 1547 cd

Power: 14.0 W

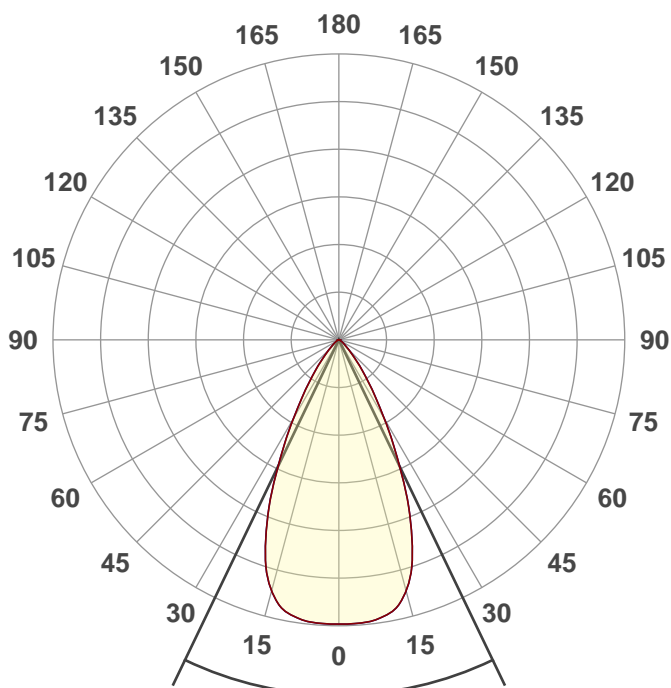
PF: 0.99



350440-13LM-30K-90-50-120-ELV-WH

Date and time:

7/22/2019 11:05:56 AM



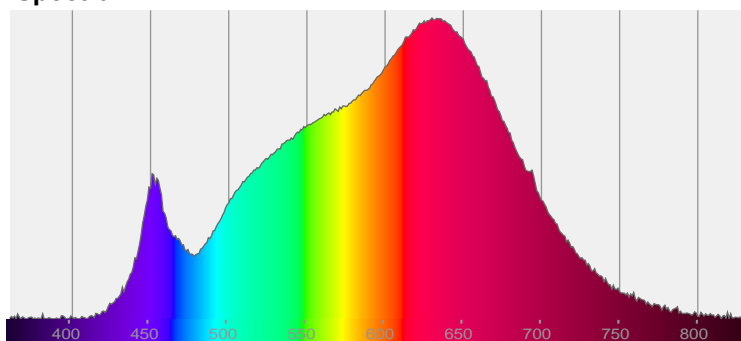
Beam angle

51.3°

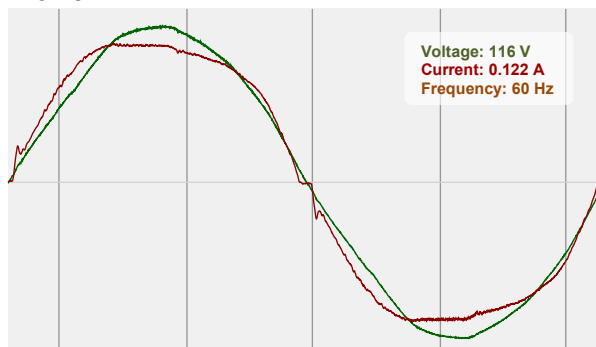


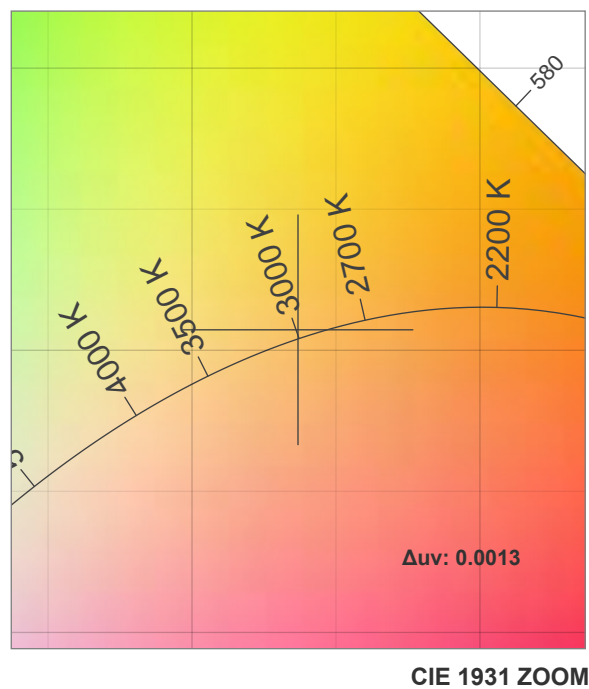
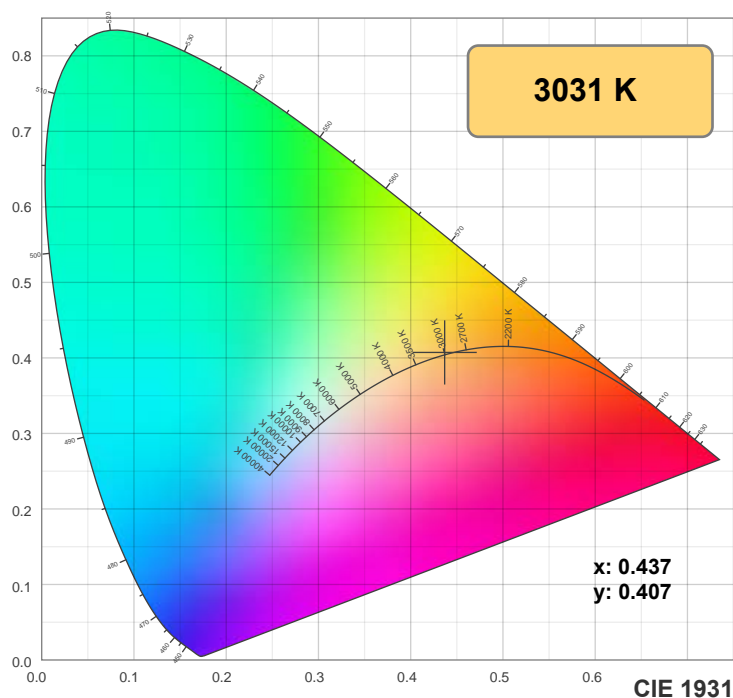
CIE 1931  
x: 0.437  
y: 0.407

Spectra

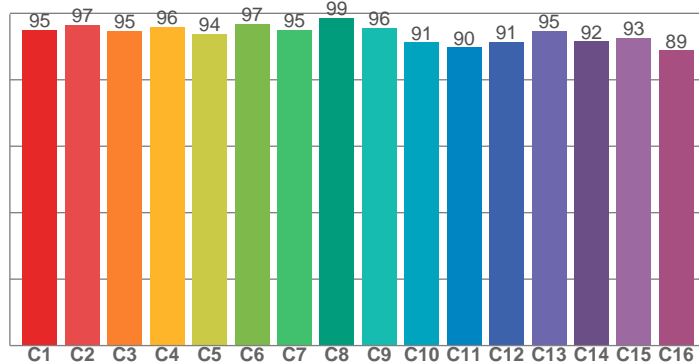


Power

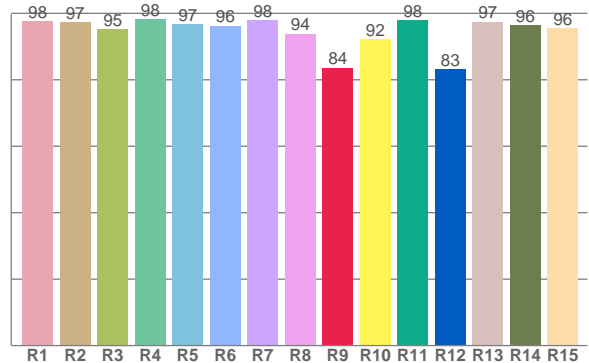




TM30: 94.0



CRI: 96.6 (R1-R8)



CRI R values, only R1-R8 are used to calculate final CRI value

R1	R2	R3	R4	R5	R6	R7	R8	R9	R10	R11	R12	R13	R14	R15
97.6	97.3	95.1	98.2	96.7	96.3	97.9	93.9	83.7	92.2	98.0	83.1	97.5	96.4	95.5

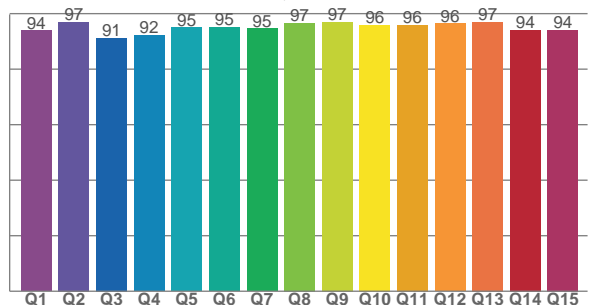
TM30 C values, 16 binned values out of total of 99 C values

C1	C2	C3	C4	C5	C6	C7	C8	C9	C10	C11	C12	C13	C14	C15	C16
95.1	96.6	94.8	96.0	93.9	96.8	95.0	98.6	95.6	91.2	89.8	91.4	94.8	91.6	92.6	88.8

CQS Q values

Q1	Q2	Q3	Q4	Q5	Q6	Q7	Q8	Q9	Q10	Q11	Q12	Q13	Q14	Q15
93.9	97.0	91.2	92.2	95.0	95.1	94.5	96.6	96.9	95.9	95.9	96.4	97.0	94.1	94.1

CQS: 94.7



## Color parameters

Color temperature	Color rendering index	Red component	Color fidelity	Color gamut	Color quality scale	Color coordinate cie 1931	Color coordinate cie 1931	Color coordinate	Color coordinate	Color deviation from black body
CCT	CRI	CRI R9	TM30 Rf	TM30 Rg	CQS	x	y	u	v	$\Delta uv$
3031 K	96.6	83.7	94.0	100.4	94.7	0.437	0.407	0.249	0.348	0.0013

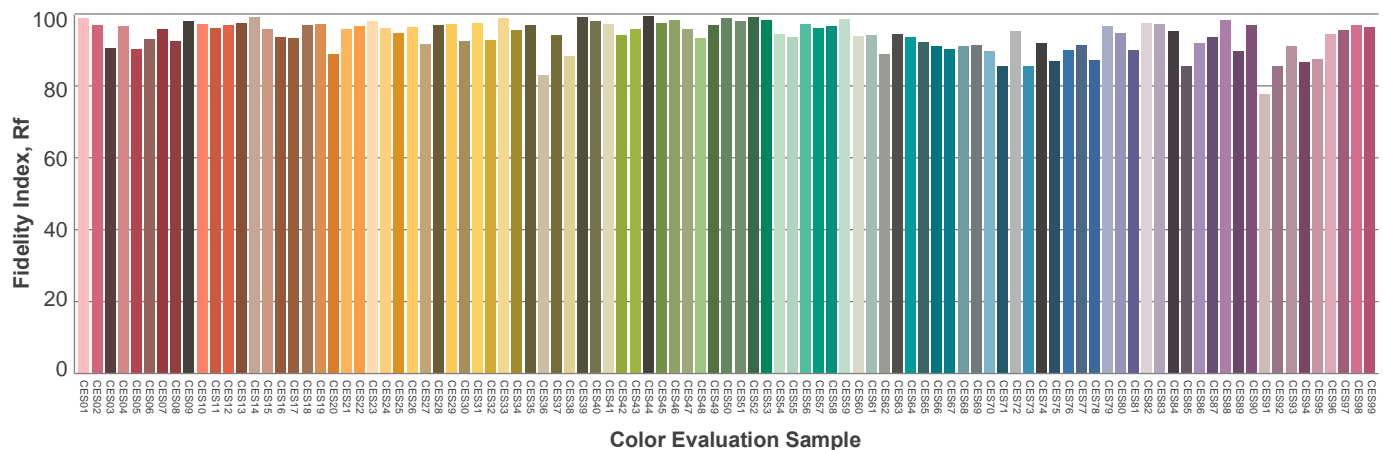
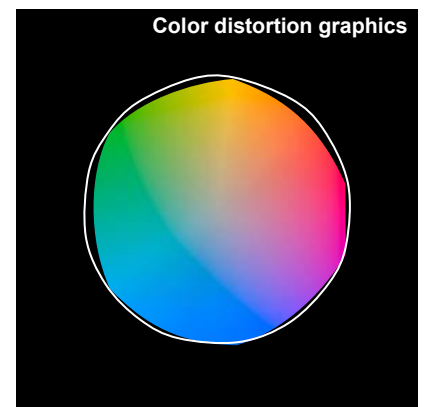
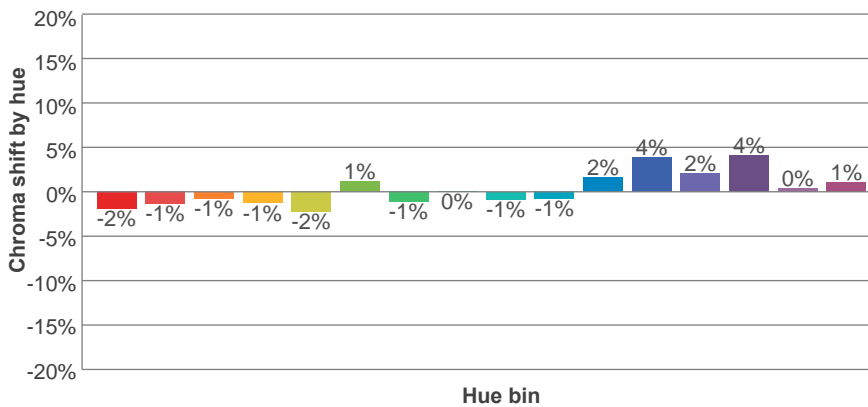
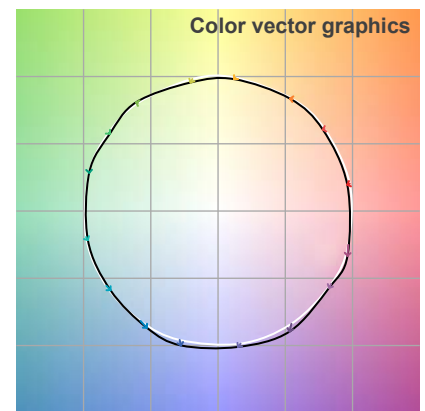
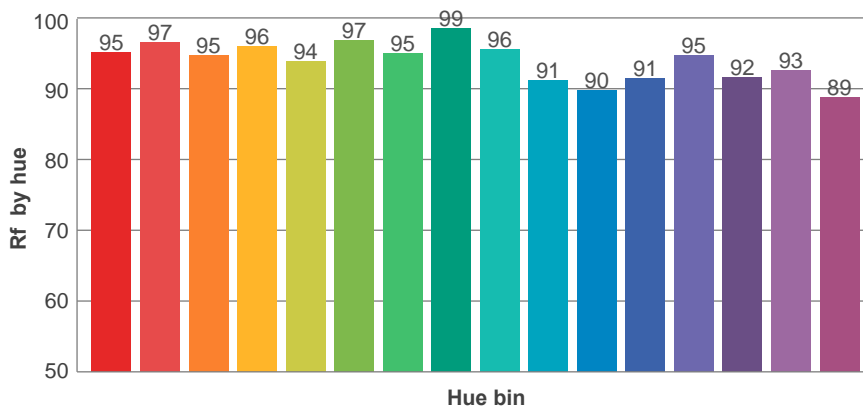
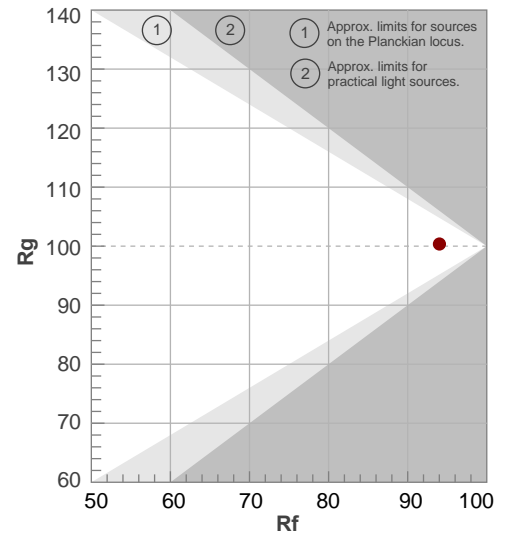
**Rf 94.0**

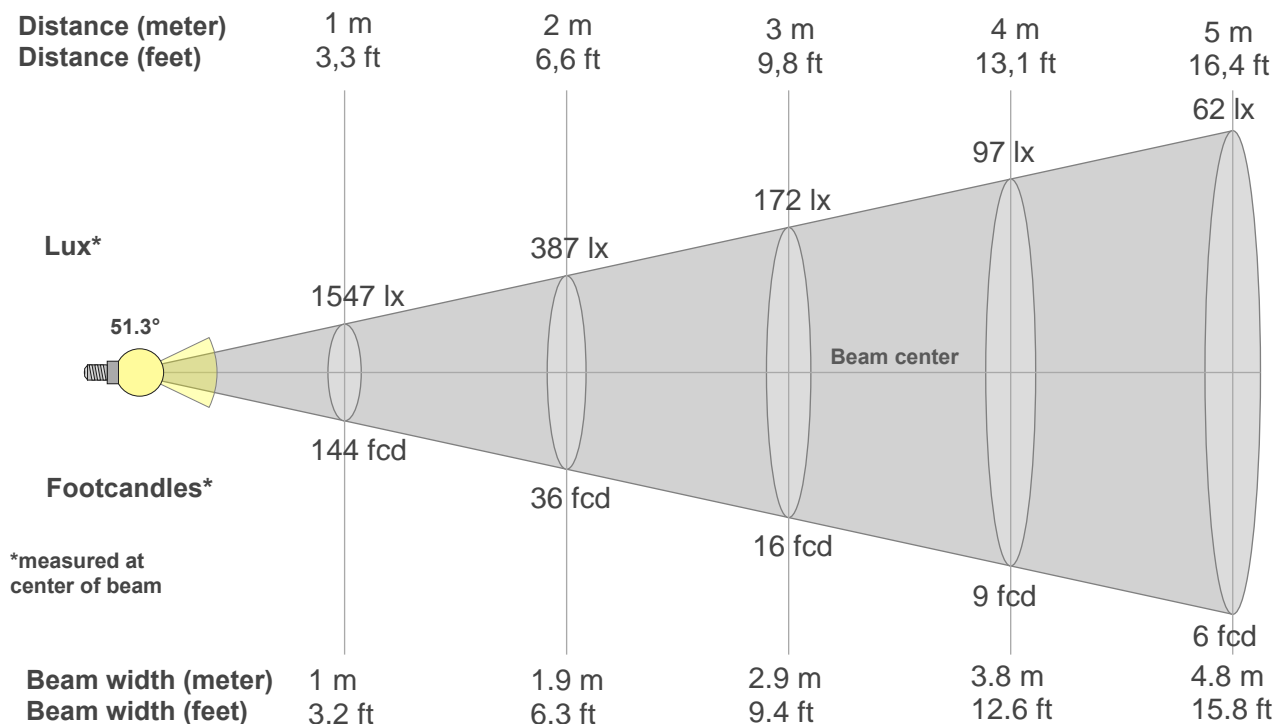
Fidelity index Rf

**Rg 100.4**

Gamut index Rg

Hue Bin	R <sub>f</sub>	Graphic shifts (%)	
		Chroma	Hue
1	95	-2%	0%
2	97	-1%	0%
3	95	-1%	2%
4	96	-1%	1%
5	94	-2%	2%
6	97	1%	1%
7	95	-1%	0%
8	99	0%	0%
9	96	-1%	2%
10	91	-1%	4%
11	90	2%	7%
12	91	4%	2%
13	95	2%	-2%
14	92	4%	-4%
15	93	0%	-3%
16	89	1%	-8%





**Beam intensities from 1-20m**

1m	2m	3m	4m	5m	6m	7m	8m	9m	10m	11m	12m	13m	14m	15m	16m	17m	18m	19m	20m
3.3ft	6.6ft	9.8ft	13.1ft	16.4ft	19.7ft	23ft	26.2ft	29.5ft	32.8ft	36.1ft	39.4ft	42.7ft	45.9ft	49.2ft	52.5ft	55.8ft	59.1ft	62.3ft	65.6ft
1547lx	387lx	172lx	97lx	62lx	43lx	32lx	24lx	19lx	15lx	13lx	11lx	9lx	8lx	7lx	6lx	5lx	5lx	4lx	4lx
143.7fcd	35.9fcd	16fcd	9fcd	5.7fcd	4fcd	2.9fcd	2.2fcd	1.8fcd	1.4fcd	1.2fcd	1fcd	0.9fcd	0.7fcd	0.6fcd	0.6fcd	0.5fcd	0.4fcd	0.4fcd	0.4fcd

**Intensities in 0° c-plane**

0°	2°	4°	6°	8°	10°	12°	14°	16°	18°	20°	22°	24°	26°	28°	30°	32°	34°	36°	38°
1547	1547	1545	1539	1533	1510	1485	1436	1363	1286	1157	1029	892	750	615	507	399	323	256	198
100%	100%	100%	99%	99%	98%	96%	93%	88%	83%	75%	67%	58%	48%	40%	33%	26%	21%	17%	13%

**Intensities in 90° c-plane**

0°	2°	4°	6°	8°	10°	12°	14°	16°	18°	20°	22°	24°	26°	28°	30°	32°	34°	36°	38°
1547	1547	1545	1539	1533	1510	1485	1436	1363	1286	1157	1029	892	750	615	507	399	323	256	198
100%	100%	100%	99%	99%	98%	96%	93%	88%	83%	75%	67%	58%	48%	40%	33%	26%	21%	17%	13%

**Intensities in 180° c-plane**

0°	2°	4°	6°	8°	10°	12°	14°	16°	18°	20°	22°	24°	26°	28°	30°	32°	34°	36°	38°
1547	1547	1545	1539	1533	1510	1485	1436	1363	1286	1157	1029	892	750	615	507	399	323	256	198
100%	100%	100%	99%	99%	98%	96%	93%	88%	83%	75%	67%	58%	48%	40%	33%	26%	21%	17%	13%

**Intensities in 270° c-plane**

0°	2°	4°	6°	8°	10°	12°	14°	16°	18°	20°	22°	24°	26°	28°	30°	32°	34°	36°	38°
1547	1547	1545	1539	1533	1510	1485	1436	1363	1286	1157	1029	892	750	615	507	399	323	256	198
100%	100%	100%	99%	99%	98%	96%	93%	88%	83%	75%	67%	58%	48%	40%	33%	26%	21%	17%	13%

Beam angle 50°	Field angle 10°	Cutoff angle 2,5%	Intensity ratio in 120° cone	Intensity ratio in 90° cone
{B_ANG}°	80.1°	102.2°	98.6%	94.7%