

Light efficiency:

80 Lumen/Watt

Light quality:

CRI: 79.7

Color temperature:

2929 K

Output: 4113 lm

Peak: 19287 cd

Power: 51.1 W

PF: 1.0



Beam angle

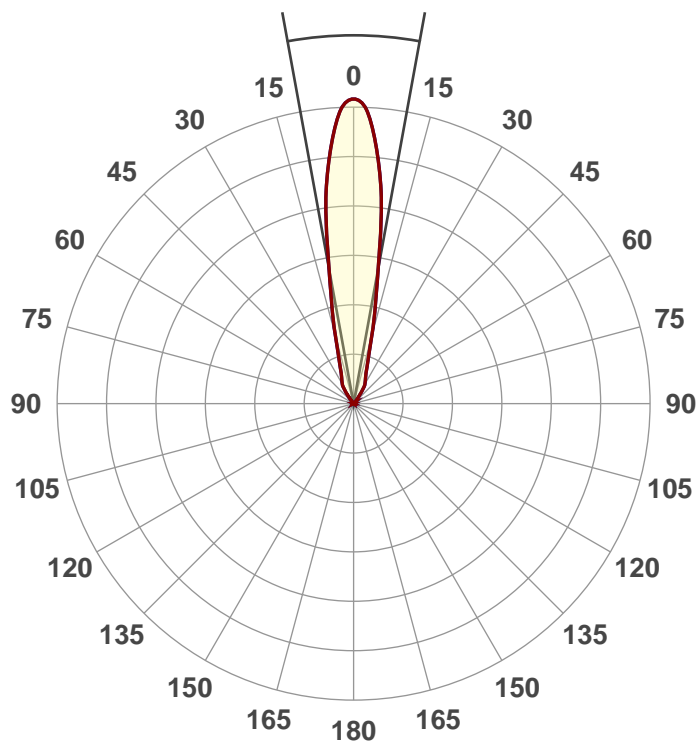
20.7°

Product name:

608RA-6-XTM19-50LM-30K-83-  
SA20-UNV-DIM10-MC-S

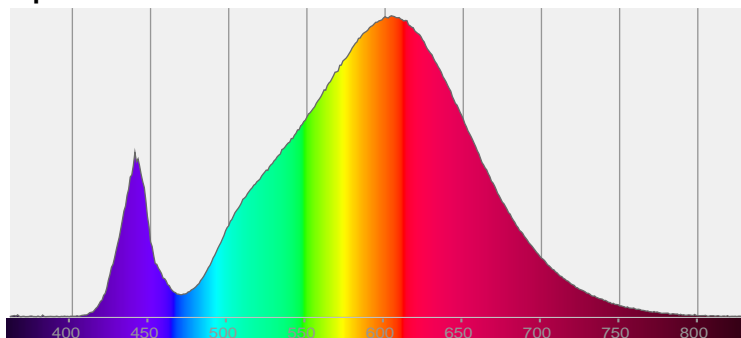
Date and time:

12/5/2017 8:12:27 AM

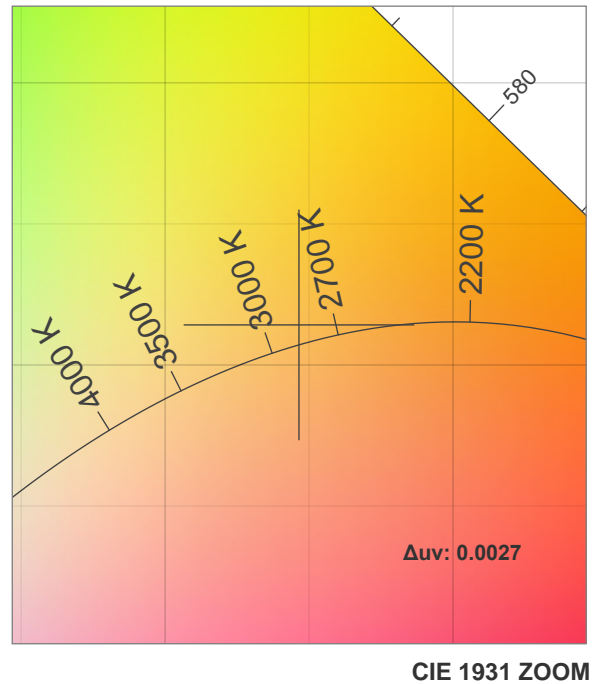
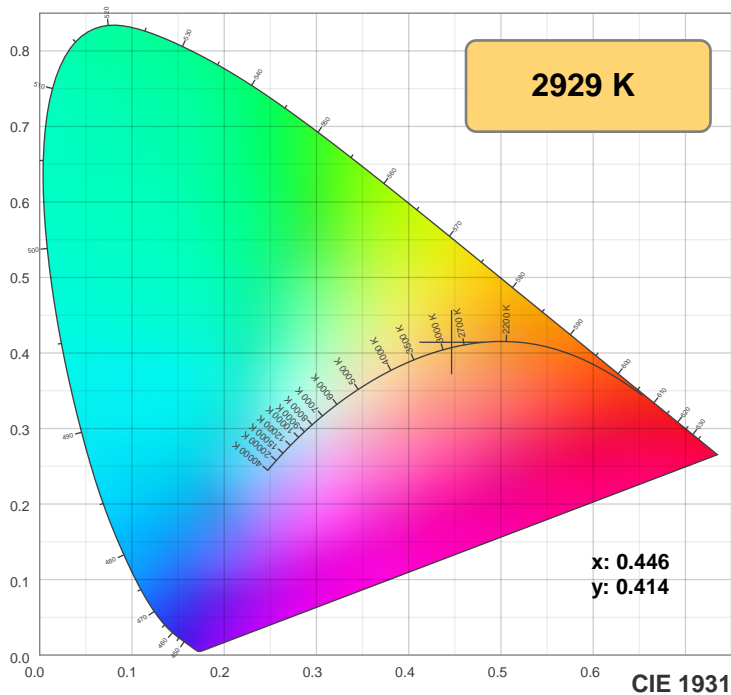


CIE 1931  
x: 0.446  
y: 0.414

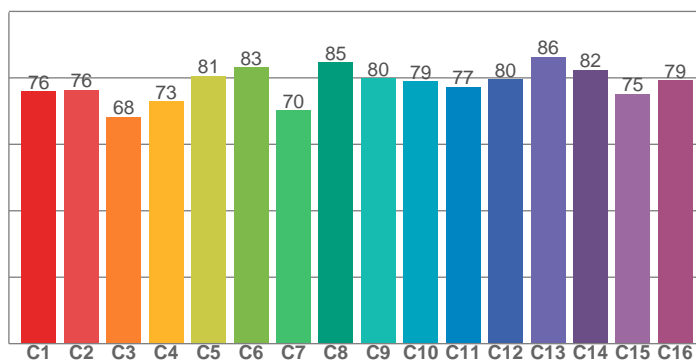
Spectra



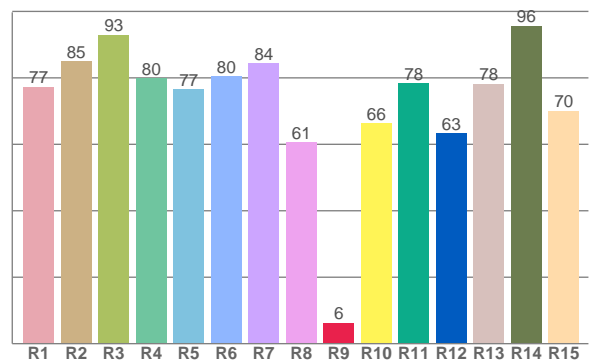
## Color details



TM30: 77.9



CRI: 79.7 (R1-R8)



CRI R values, only R1-R8 are used to calculate final CRI value

R1	R2	R3	R4	R5	R6	R7	R8	R9	R10	R11	R12	R13	R14	R15
77.3	85.1	93.0	79.9	76.6	80.5	84.4	60.5	6.3	66.3	78.4	63.3	78.3	95.7	70.1

TM30 C values, 16 binned values out of total of 99 C values

C1	C2	C3	C4	C5	C6	C7	C8	C9	C10	C11	C12	C13	C14	C15	C16
76.0	76.3	68.3	73.0	80.6	83.2	70.2	84.7	79.8	78.9	77.3	79.6	86.3	82.3	75.2	79.3

## Color parameters

Color temperature	Color rendering index	Red component	Color fidelity	Color gamut	Color coordinate cie 1931	Color coordinate cie 1931	Color coordinate	Color coordinate	Color deviation from black body
CCT	CRI	CRI R9	TM30 Rf	TM30 Rg	x	y	u	v	Δuv
2929 K	79.7	6.3	77.9	98.5	0.446	0.414	0.252	0.351	0.0027

## TM30 details

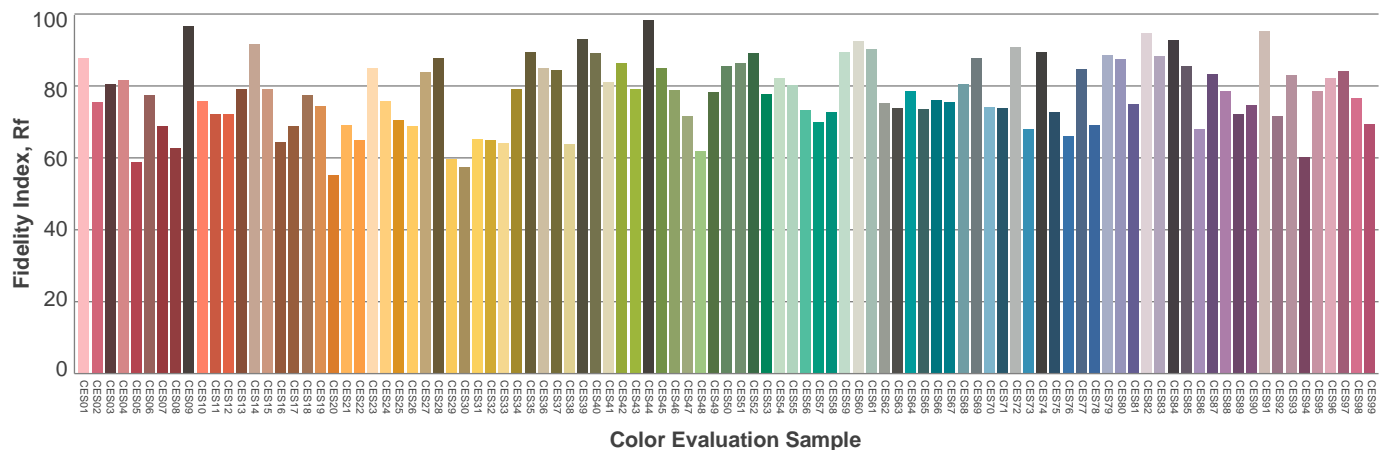
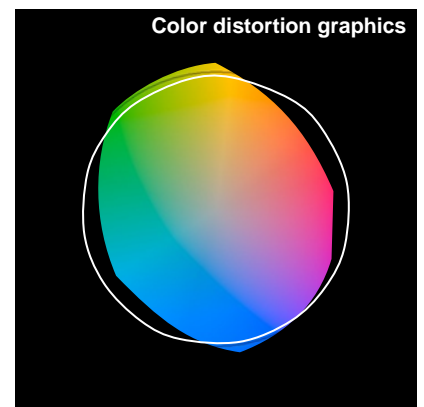
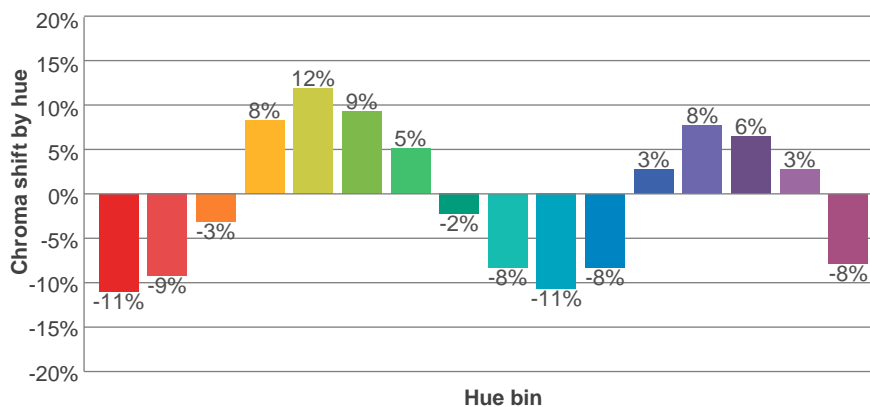
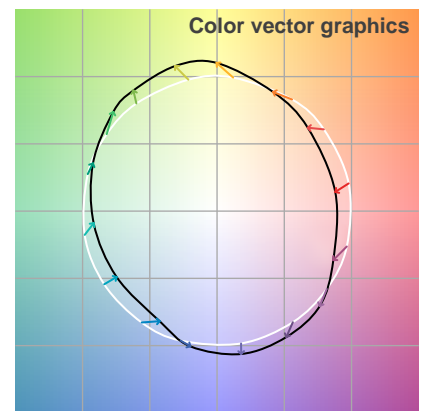
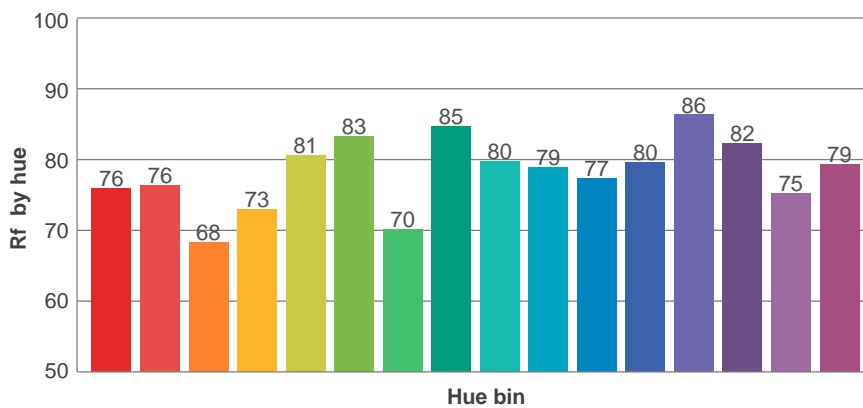
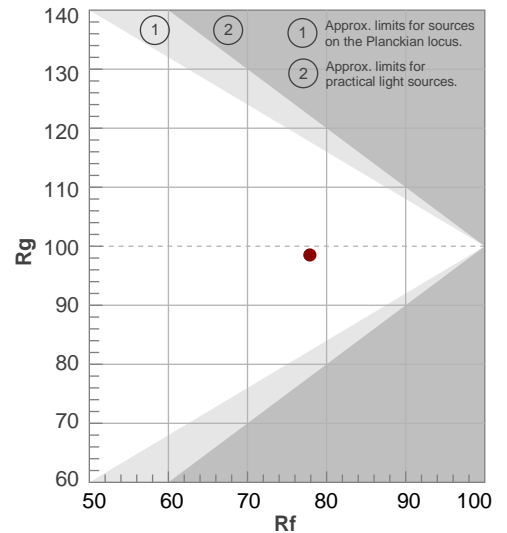
**Rf 77.9**

Fidelity index Rf

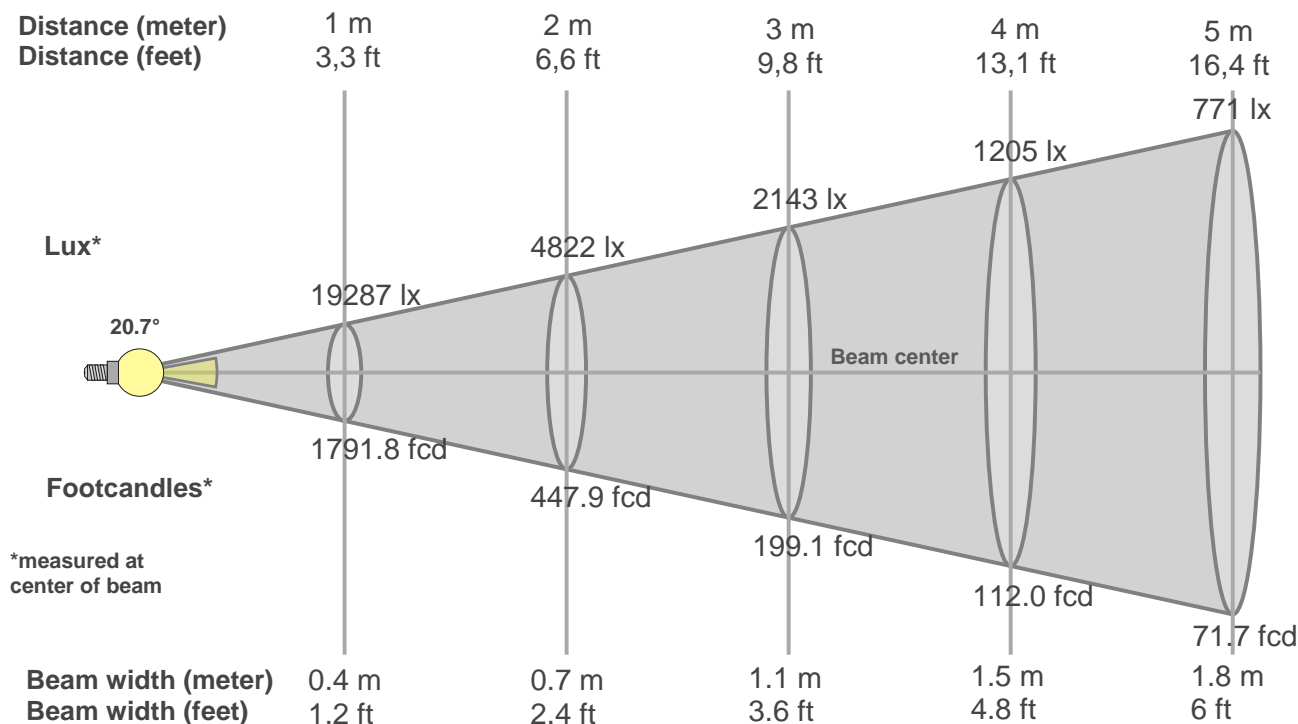
**Rg 98.5**

Gammut index Rg

Hue Bin	R <sub>f</sub>	Graphic shifts (%)	
		Chroma	Hue
1	76	-11%	-4%
2	76	-9%	8%
3	68	-3%	15%
4	73	8%	14%
5	81	12%	8%
6	83	9%	-4%
7	70	5%	-16%
8	85	-2%	-9%
9	80	-8%	-7%
10	79	-11%	1%
11	77	-8%	11%
12	80	3%	8%
13	86	8%	-1%
14	82	6%	-10%
15	75	3%	-13%
16	79	-8%	-12%



## Beam details



### Beam intensities from 1-20m

1m	2m	3m	4m	5m	6m	7m	8m	9m	10m	11m	12m	13m	14m	15m	16m	17m	18m	19m	20m
3.3ft	6.6ft	9.8ft	13.1ft	16.4ft	19.7ft	23ft	26.2ft	29.5ft	32.8ft	36.1ft	39.4ft	42.7ft	45.9ft	49.2ft	52.5ft	55.8ft	59.1ft	62.3ft	65.6ft
19287lx	4822lx	2143lx	1205lx	771lx	536lx	394lx	301lx	238lx	193lx	159lx	134lx	114lx	98lx	86lx	75lx	67lx	60lx	53lx	48lx
1791.8fcd	447.9fcd	199.1fcd	112fcd	71.7fcd	49.8fcd	36.6fcd	28fcd	22.1fcd	17.9fcd	14.8fcd	12.4fcd	10.6fcd	9.1fcd	8fcd	7fcd	6.2fcd	5.5fcd	5fcd	4.5fcd

### Intensities in 0° c-plane

0°	2°	4°	6°	8°	10°	12°	14°	16°	18°	20°	22°	24°	26°	28°	30°	32°	34°	36°	38°
19.3K	19.3K	17.6K	15.5K	13.1K	10.1K	7.2K	5.6K	4.2K	3.2K	2.7K	2.2K	2.0K	1.8K	1.6K	1.4K	1.3K	1.0K	0.6K	0.4K
100%	100%	91%	80%	68%	53%	37%	29%	22%	17%	14%	11%	10%	9%	8%	8%	7%	5%	3%	2%

### Intensities in 90° c-plane

0°	2°	4°	6°	8°	10°	12°	14°	16°	18°	20°	22°	24°	26°	28°	30°	32°	34°	36°	38°
19.3K	19.3K	17.6K	15.5K	13.1K	10.1K	7.2K	5.6K	4.2K	3.2K	2.7K	2.2K	2.0K	1.8K	1.6K	1.4K	1.3K	1.0K	0.6K	0.4K
100%	100%	91%	80%	68%	53%	37%	29%	22%	17%	14%	11%	10%	9%	8%	8%	7%	5%	3%	2%

### Intensities in 180° c-plane

0°	2°	4°	6°	8°	10°	12°	14°	16°	18°	20°	22°	24°	26°	28°	30°	32°	34°	36°	38°
19.3K	19.3K	17.6K	15.5K	13.1K	10.1K	7.2K	5.6K	4.2K	3.2K	2.7K	2.2K	2.0K	1.8K	1.6K	1.4K	1.3K	1.0K	0.6K	0.4K
100%	100%	91%	80%	68%	53%	37%	29%	22%	17%	14%	11%	10%	9%	8%	8%	7%	5%	3%	2%

### Intensities in 270° c-plane

0°	2°	4°	6°	8°	10°	12°	14°	16°	18°	20°	22°	24°	26°	28°	30°	32°	34°	36°	38°
19.3K	19.3K	17.6K	15.5K	13.1K	10.1K	7.2K	5.6K	4.2K	3.2K	2.7K	2.2K	2.0K	1.8K	1.6K	1.4K	1.3K	1.0K	0.6K	0.4K
100%	100%	91%	80%	68%	53%	37%	29%	22%	17%	14%	11%	10%	9%	8%	8%	7%	5%	3%	2%

Beam angle 50%	Field angle 10%	Cutoff angle 2,5%	Intensity ratio in 120° cone	Intensity ratio in 90° cone
20.7°	49°	73.7°	99.9%	99.9%