

Light efficiency:

65 Lumen/Watt

Light quality:

CRI: 79.7

Color temperature:

2937 K

Output: 2973 lm

Peak: 2445 cd

Power: 45.9 W

PF: 1.0



Beam angle

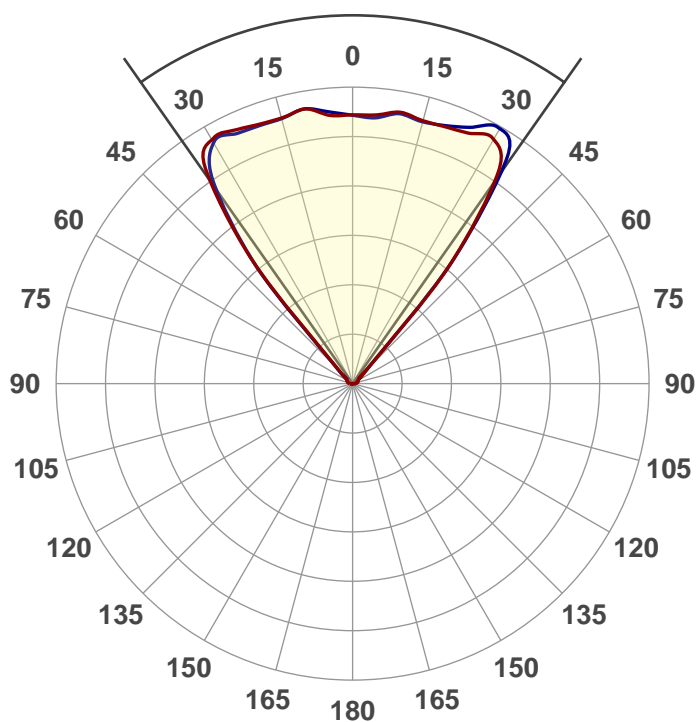
70.2°

Product name:

608QA-6-XTM19-40LM-30K-83-
UNV-DIM10-WH-TCRO

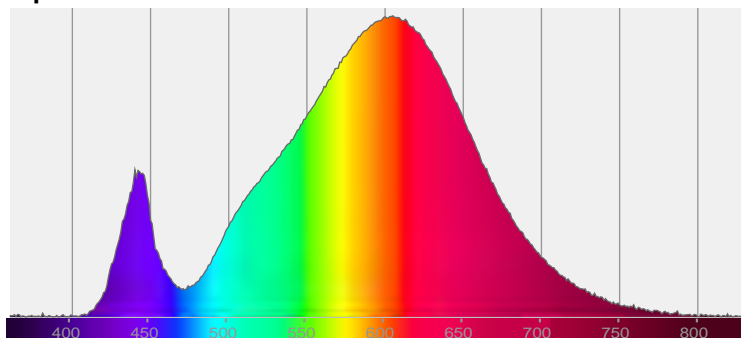
Date and time:

1/16/2018 9:36:37 AM

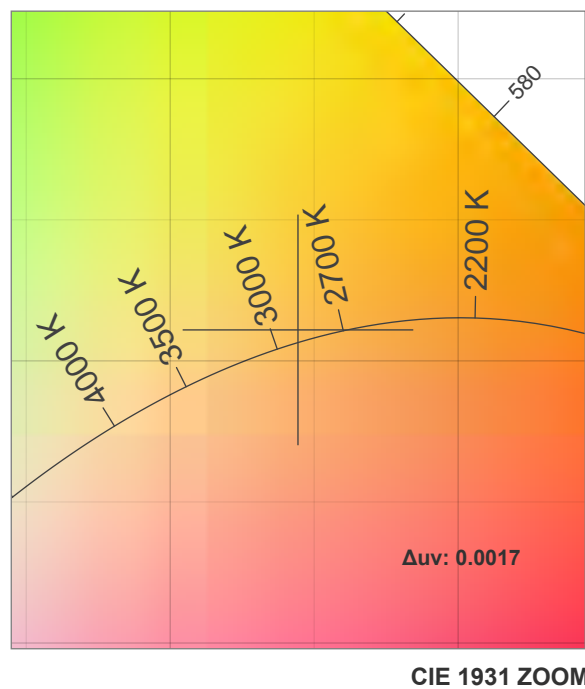
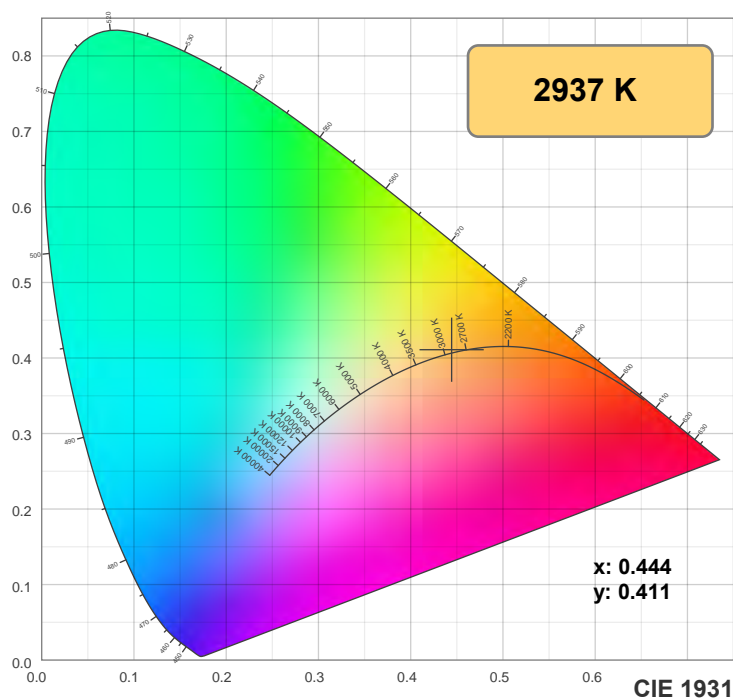


CIE 1931
x: 0.444
y: 0.411

Spectra

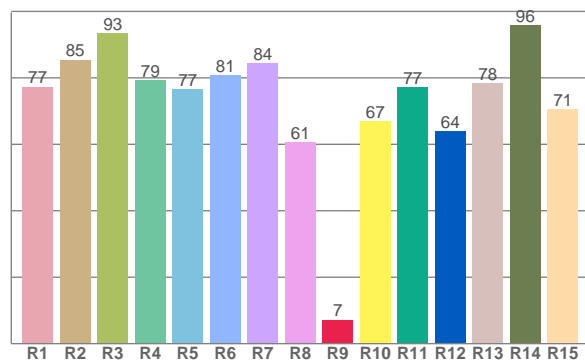
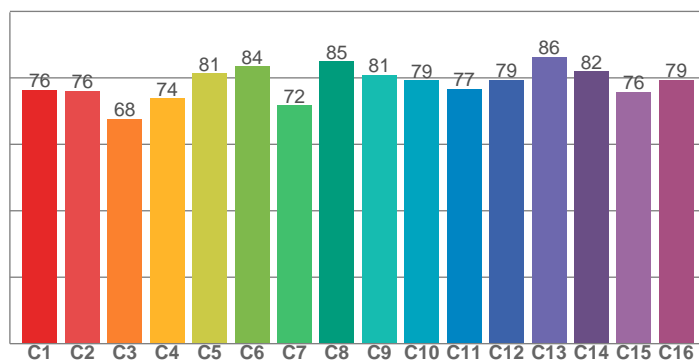


Color details



TM30: 78.1

CRI: 79.7 (R1-R8)



CRI R values, only R1-R8 are used to calculate final CRI value

R1	R2	R3	R4	R5	R6	R7	R8	R9	R10	R11	R12	R13	R14	R15
77.3	85.5	93.3	79.3	76.6	80.7	84.3	60.6	7.2	67.0	77.3	64.0	78.4	95.9	70.6

TM30 C values, 16 binned values out of total of 99 C values

C1	C2	C3	C4	C5	C6	C7	C8	C9	C10	C11	C12	C13	C14	C15	C16
76.3	76.1	67.7	73.8	81.3	83.5	71.7	84.9	80.9	79.3	76.7	79.4	86.3	82.0	75.8	79.3

Color parameters

Color temperature	Color rendering index	Red component	Color fidelity	Color gamut	Color coordinate cie 1931	Color coordinate cie 1931	Color coordinate	Color coordinate	Color deviation from black body
CCT	CRI	CRI R9	TM30 Rf	TM30 Rg	x	y	u	v	Δuv
2937 K	79.7	7.2	78.1	98.5	0.444	0.411	0.252	0.350	0.0017

TM30 details

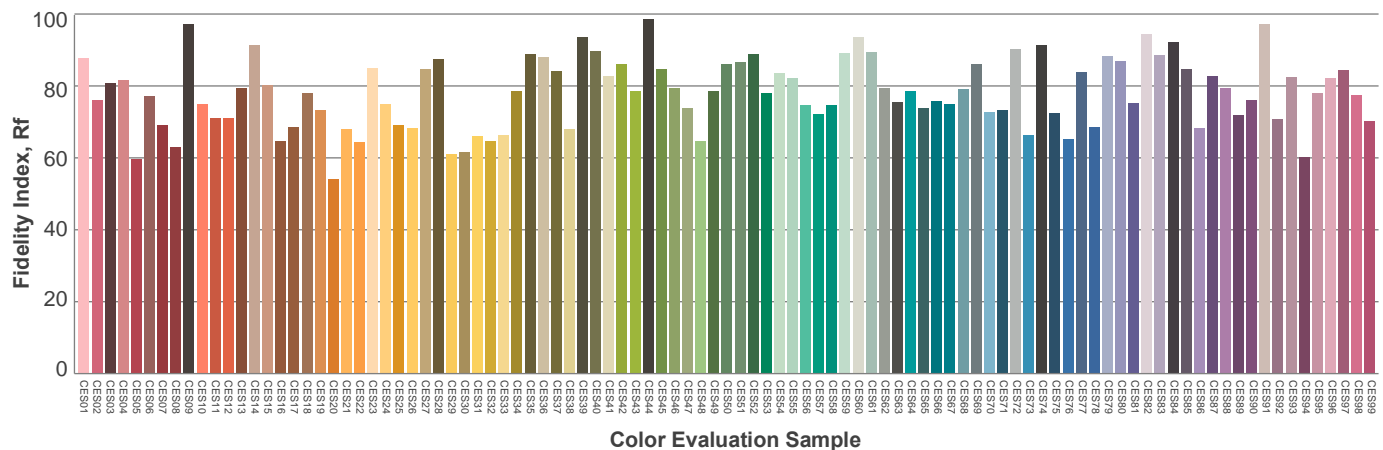
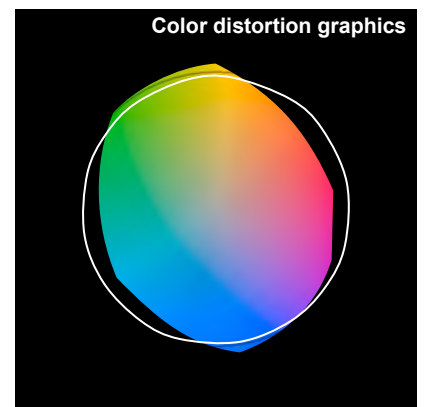
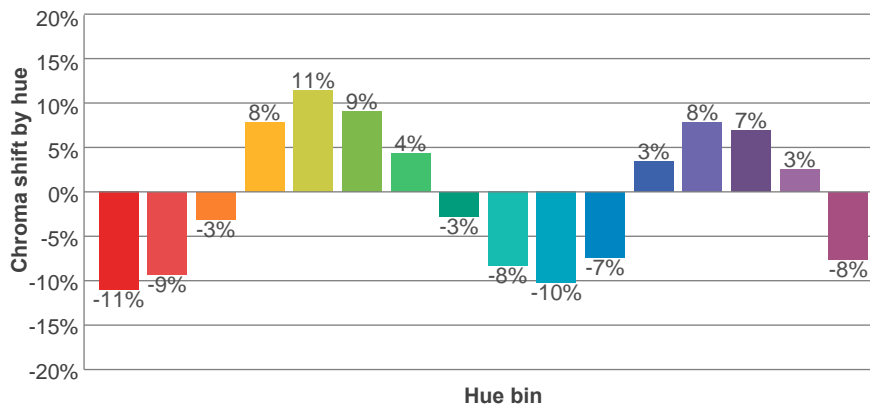
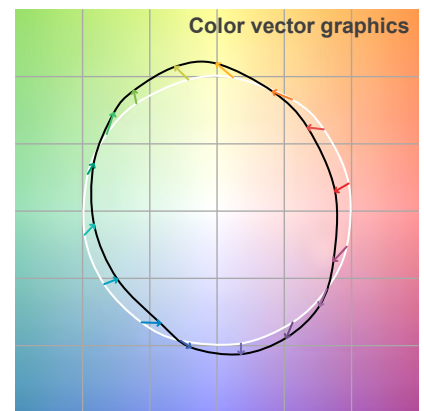
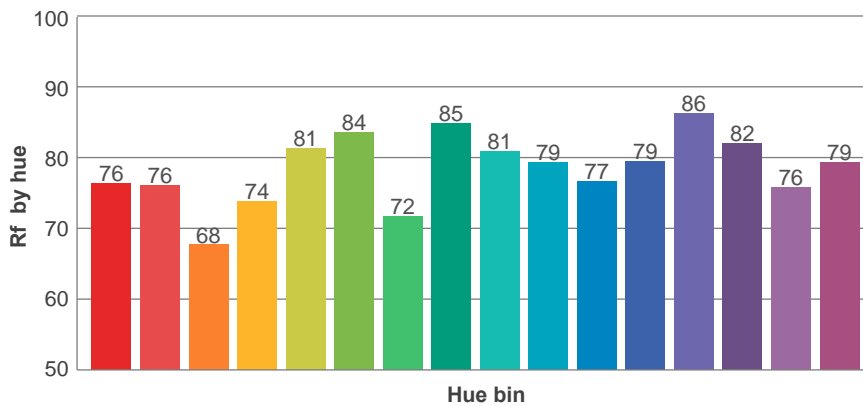
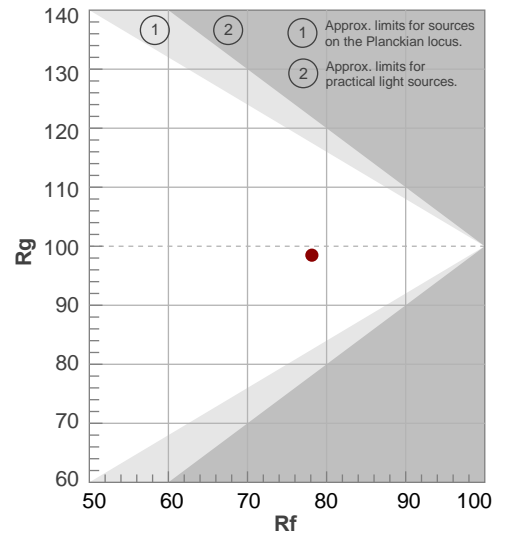
Rf 78.1

Fidelity index Rf

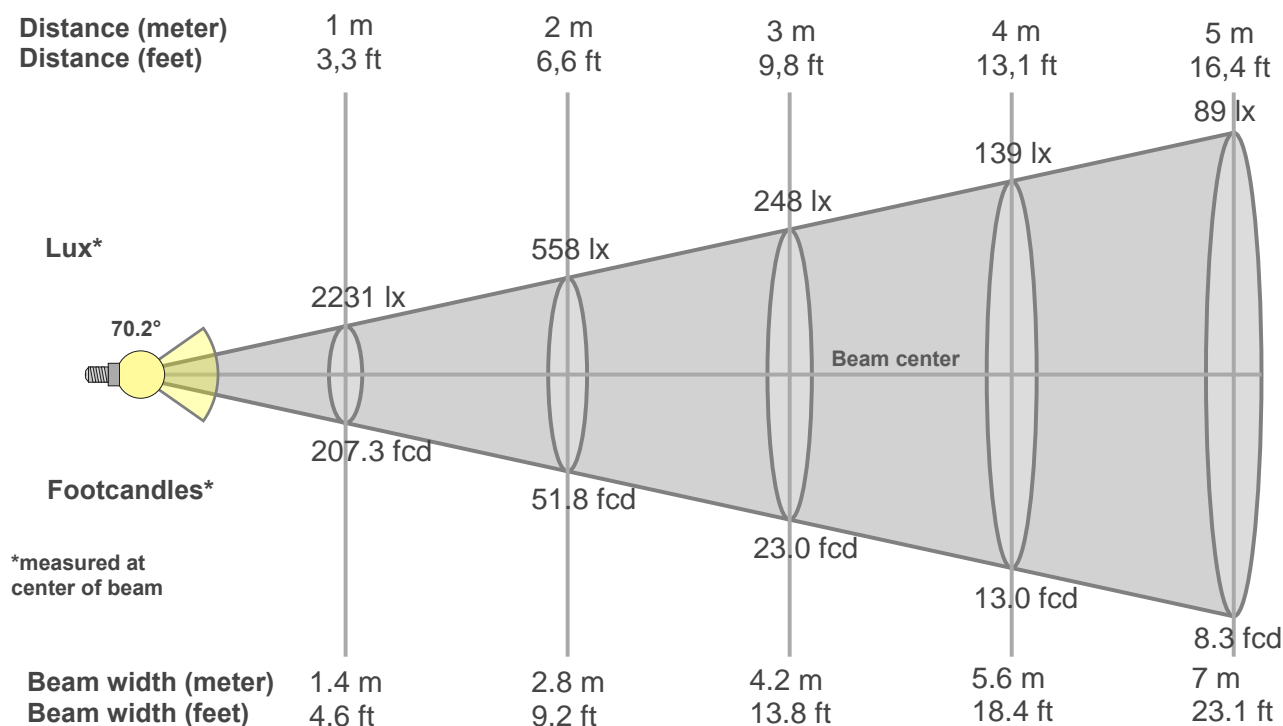
Rg 98.5

Gamut index Rg

Hue Bin	R _f	Graphic shifts (%)	
		Chroma	Hue
1	76	-11%	-4%
2	76	-9%	8%
3	68	-3%	15%
4	74	8%	14%
5	81	11%	8%
6	84	9%	-4%
7	72	4%	-16%
8	85	-3%	-8%
9	81	-8%	-6%
10	79	-10%	2%
11	77	-7%	12%
12	79	3%	8%
13	86	8%	-1%
14	82	7%	-10%
15	76	3%	-13%
16	79	-8%	-13%



Beam details



Beam intensities from 1-20m

1m	2m	3m	4m	5m	6m	7m	8m	9m	10m	11m	12m	13m	14m	15m	16m	17m	18m	19m	20m
3.3ft	6.6ft	9.8ft	13.1ft	16.4ft	19.7ft	23ft	26.2ft	29.5ft	32.8ft	36.1ft	39.4ft	42.7ft	45.9ft	49.2ft	52.5ft	55.8ft	59.1ft	62.3ft	65.6ft
2231lx	558lx	248lx	139lx	89lx	62lx	46lx	35lx	28lx	22lx	18lx	15lx	13lx	11lx	10lx	9lx	8lx	7lx	6lx	6lx
207.3fcd	51.8fcd	23fcd	13fcd	8.3fcd	5.8fcd	4.2fcd	3.2fcd	2.6fcd	2.1fcd	1.7fcd	1.4fcd	1.2fcd	1.1fcd	0.9fcd	0.8fcd	0.7fcd	0.6fcd	0.6fcd	0.5fcd

Intensities in 0° c-plane

0°	2°	4°	6°	8°	10°	12°	14°	16°	18°	20°	22°	24°	26°	28°	30°	32°	34°	36°	38°
2231	2232	2233	2253	2285	2311	2299	2287	2284	2286	2290	2302	2314	2325	2336	2322	2253	2185	1871	1518
100%	100%	100%	101%	102%	104%	103%	102%	102%	102%	103%	103%	104%	104%	105%	104%	101%	98%	84%	68%

Intensities in 90° c-plane

0°	2°	4°	6°	8°	10°	12°	14°	16°	18°	20°	22°	24°	26°	28°	30°	32°	34°	36°	38°
2231	2242	2257	2274	2295	2314	2299	2283	2277	2276	2277	2281	2285	2295	2308	2296	2186	2076	1805	1480
100%	100%	101%	102%	103%	104%	103%	102%	102%	102%	102%	102%	102%	103%	103%	103%	98%	93%	81%	66%

Intensities in 180° c-plane

0°	2°	4°	6°	8°	10°	12°	14°	16°	18°	20°	22°	24°	26°	28°	30°	32°	34°	36°	38°
2231	2234	2237	2248	2268	2287	2275	2264	2260	2263	2267	2276	2286	2304	2328	2330	2243	2157	1869	1508
100%	100%	100%	101%	102%	102%	102%	101%	101%	101%	102%	102%	102%	103%	104%	104%	101%	97%	84%	68%

Intensities in 270° c-plane

0°	2°	4°	6°	8°	10°	12°	14°	16°	18°	20°	22°	24°	26°	28°	30°	32°	34°	36°	38°
2231	2222	2216	2228	2252	2272	2262	2252	2256	2266	2279	2305	2331	2370	2415	2425	2357	2289	1939	1540
100%	100%	99%	100%	101%	102%	101%	101%	101%	102%	102%	103%	104%	106%	108%	109%	106%	103%	87%	69%

Beam angle 50%	Field angle 10%	Cutoff angle 2,5%	Intensity ratio in 120° cone	Intensity ratio in 90° cone
70.2°	81.9°	120.7°	95.8%	92.1%