

Light efficiency:

96 Lumen/Watt

Color temperature:

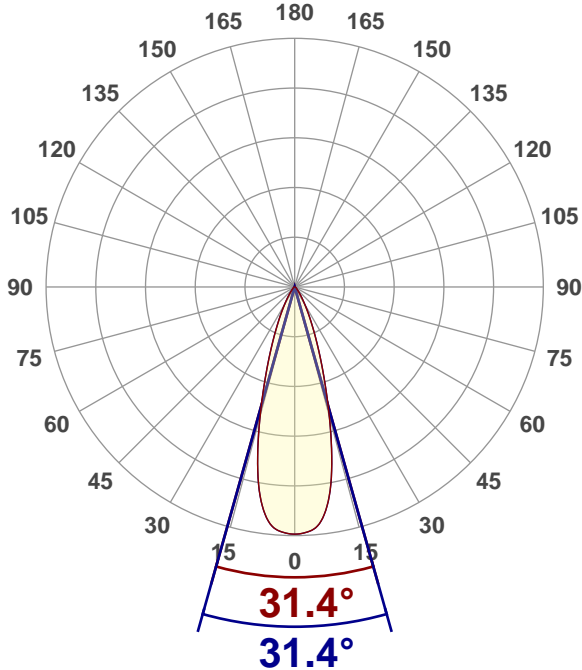
3065 K

Light quality:

CRI:91.8, R_g:90.6, R_f:98.4**P: 2 / V: - / F: 3****Output: 2510 lm****Peak: 6871 cd****Power: 26.2 W****Voltage: 119 V****Current: 0.224 A****PF: 0.98****THD: 14.3 %**

Angular Distribution

0° and 90° plane



Product name:

ATF7425-3038-90WH

Test Date:

11/30/2022

Beam Angle (50% of the brightness of the centre):

31.4°

Field Angle (10% of the brightness of the centre):

57.1°

Cut Off Angle (2.5% of the brightness of the centre):

78.3°

Beam Details

*measured at centre of beam

Mounting Height (feet)/(meter)	Lux*	Footcandles*	Beam width (feet) / (meter)
4 ft / 1.2 m	4623 lx	429 fc	2.2 ft / 0.7 m
8 ft / 2.4 m	1156 lx	107 fc	4.5 ft / 1.4 m
12 ft / 3.7 m	514 lx	48 fc	6.7 ft / 2.1 m
16 ft / 4.9 m	289 lx	27 fc	9 ft / 2.7 m
20 ft / 6.1 m	185 lx	17 fc	11.2 ft / 3.4 m

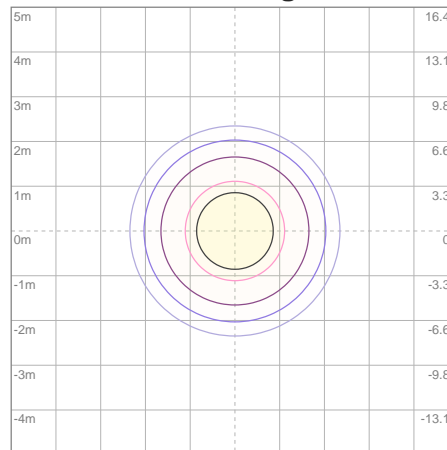
Beam center

Photometric Testing Report

Zonal Lumen Summary

Zone	Lumen	%Luminaire
0-30	2141	85.30%
0-40	2333	92.95%
0-60	2458	97.93%
60-90	51.2	2.04%
70-100	19.0	0.76%
90-120	0.177	0.01%
0-90	2509	99.96%
90-180	0.177	0.01%
0-180	2510	100.00%

ISO Lux Diagram



Lux at center:	739 lx
3%	22.17 lx
5%	36.95 lx
10%	73.90 lx
30%	221.70 lx
50%	369.50 lx
Conditions: Number of planes: 8 Lux distribution on a surface when lamp is mounted at 3.05 meters from the surface.	

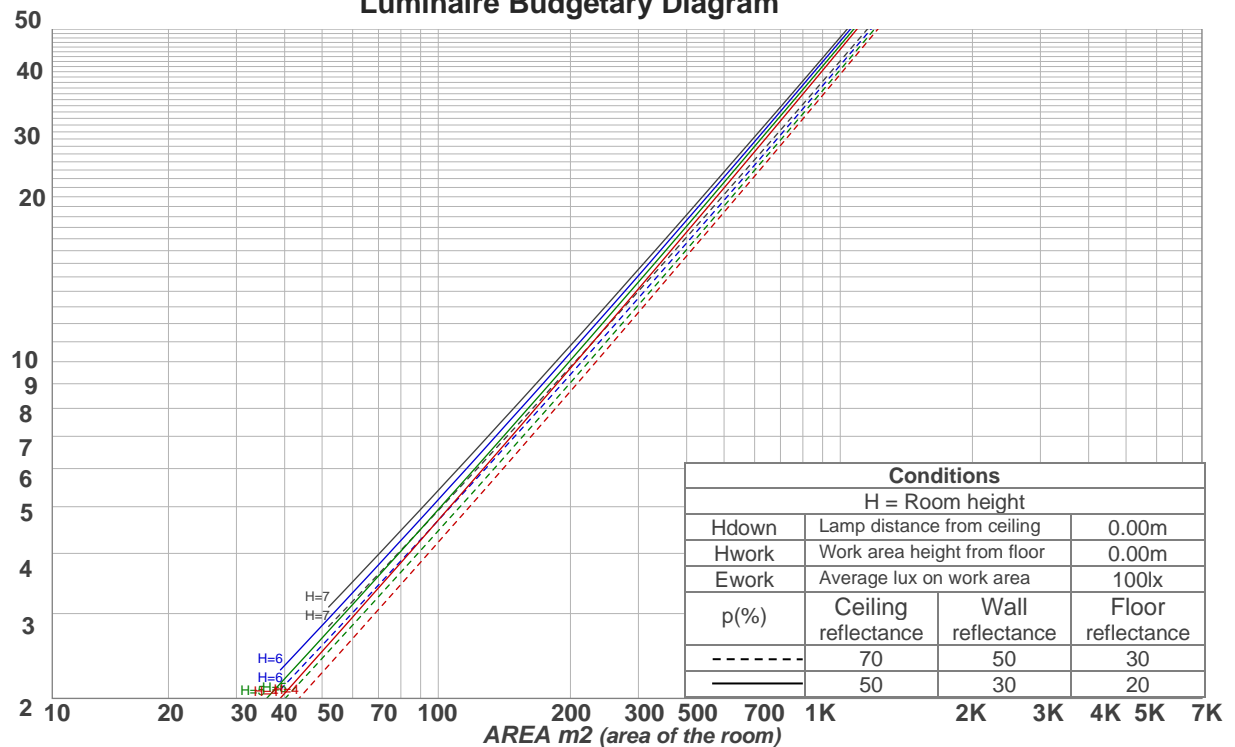
Mounting height: 3.05 meters (10 feet)

Coefficients of Utilization

Ceiling reflectance	80				70				50			30			10			0
Wall reflectance	70	50	30	10	70	50	30	10	50	30	10	50	30	10	50	30	10	0
Floor reflectance	20	20	20	20	20	20	20	20	20	20	20	20	20	20	20	20	20	0
RCR	(RCR: Room Cavity Ratio) Room Values are expressed as percentage of Lumens delivered to the task surface																	
0	119	119	119	119	116	116	116	116	111	111	111	106	106	106	102	102	102	100
1	114	112	109	107	112	109	107	106	105	104	102	102	101	99	98	97	97	95
2	109	105	101	98	107	103	100	97	100	98	95	97	95	93	95	93	91	90
3	105	99	95	92	103	98	94	91	95	92	89	93	90	88	91	89	87	85
4	101	94	90	86	99	93	89	85	91	87	84	89	86	84	87	85	83	81
5	97	90	85	81	95	89	84	81	87	83	80	86	82	80	84	81	79	78
6	93	86	81	77	92	85	80	77	84	80	76	82	79	76	81	78	75	74
7	90	82	77	74	89	82	77	73	80	76	73	79	76	73	78	75	72	71
8	87	79	74	71	86	78	74	70	77	73	70	76	73	70	76	72	70	68
9	84	76	71	68	83	75	71	68	75	70	67	74	70	67	73	70	67	66
10	81	73	68	65	80	73	68	65	72	68	65	71	67	65	71	67	65	64

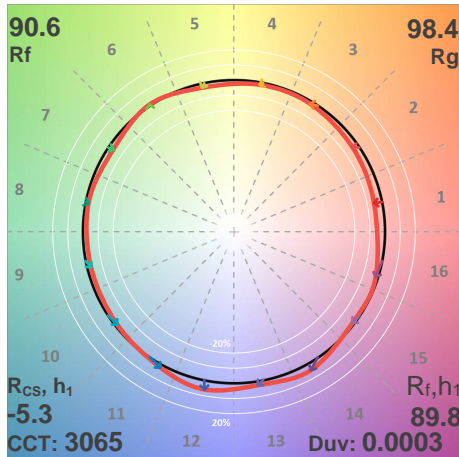
LAMPS (number of lamps)

Luminaire Budgetary Diagram

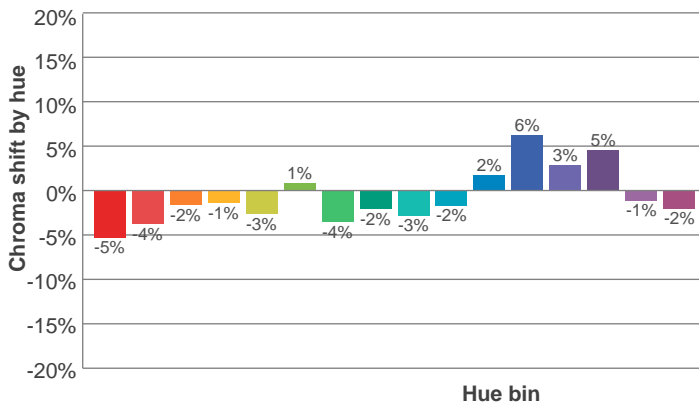
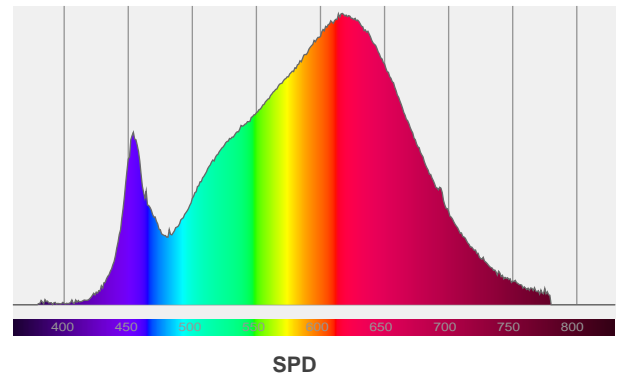
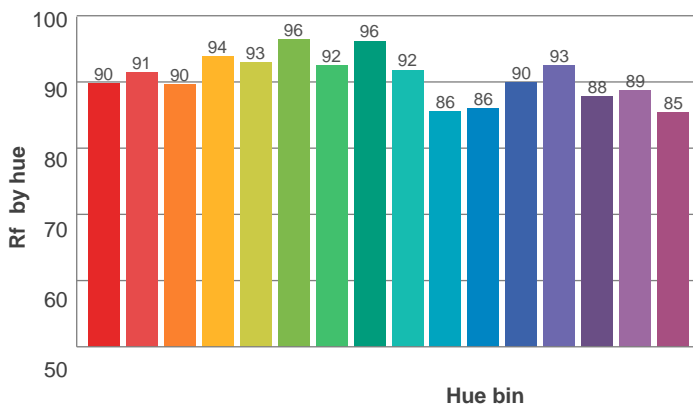
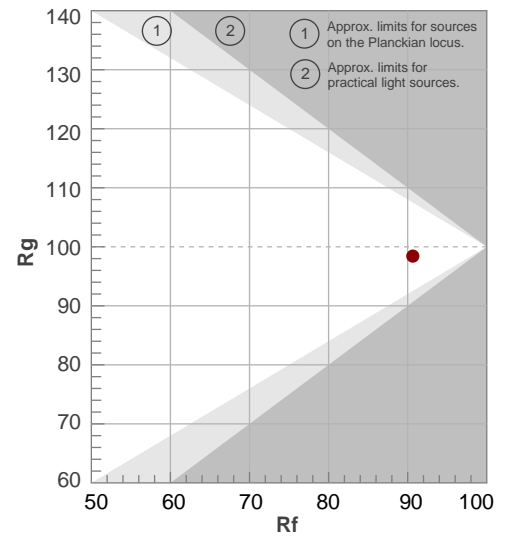


ANSI/IES TM-30-18

P: 2 / V: - / F: 3



Hue Bin	R _f	Shifts (%)	
		Chroma	Hue
1	90	-5%	0%
2	91	-4%	3%
3	90	-2%	5%
4	94	-1%	2%
5	93	-3%	2%
6	96	1%	0%
7	92	-4%	-1%
8	96	-2%	0%
9	92	-3%	5%
10	86	-2%	8%
11	86	2%	10%
12	90	6%	1%
13	93	3%	-4%
14	88	5%	-9%
15	89	-1%	-6%
16	85	-2%	-11%



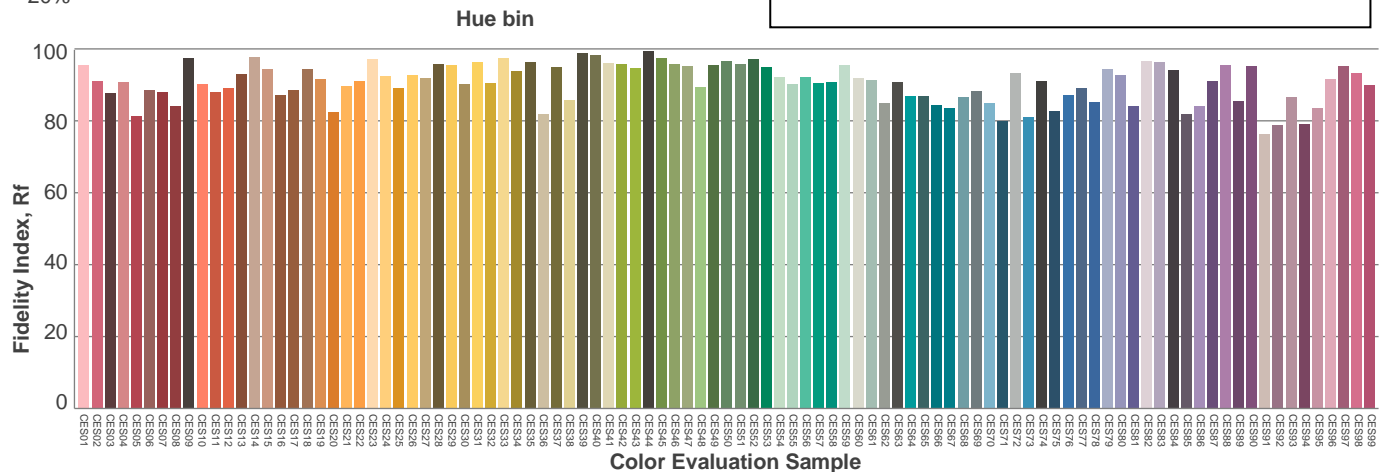
Red: 37.5%, Power=25.0mW

Blue: 9.2%, Power=14.8mW

Green: 24.8%, Power=30.3mW

UVA: 0.1%, Power=0.0mW

Dominant Wavelength: 583nm

1st Peak Wavelength: 617nm2nd Peak Wavelength: 454nm

Glare Evaluation According to UGR

p Ceiling		70	70	50	50	30	70	70	50	50	30
p Walls		50	30	50	30	30	50	30	50	30	30
p Floor		20	20	20	20	20	20	20	20	20	20
Room size X Y		Viewing direction at right angles to lamp axis					Viewing direction parallel to lamp axis				
2H	2H	18.1	18.6	18.2	18.8	19.0	18.1	18.6	18.2	18.8	19.0
	3H	18.6	19.2	18.9	19.4	19.6	18.6	19.2	18.9	19.4	19.6
	4H	18.8	19.5	19.2	19.7	19.9	18.8	19.5	19.2	19.7	19.9
	6H	19.0	19.6	19.3	19.8	20.2	19.0	19.6	19.3	19.8	20.2
	8H	19.0	19.5	19.3	19.9	20.2	19.0	19.5	19.3	19.9	20.2
	12H	19.0	19.5	19.4	19.9	20.3	19.0	19.5	19.4	19.9	20.3
4H	2H	18.2	18.8	18.6	19.0	19.3	18.2	18.8	18.6	19.0	19.3
	3H	19.1	19.6	19.4	19.9	20.3	19.1	19.6	19.4	19.9	20.3
	4H	19.3	19.8	19.8	20.2	20.7	19.3	19.8	19.8	20.2	20.7
	6H	19.5	20.0	20.0	20.4	20.7	19.5	20.0	20.0	20.4	20.7
	8H	19.5	20.0	20.0	20.3	20.7	19.5	20.0	20.0	20.3	20.7
	12H	19.5	19.9	20.0	20.3	20.8	19.5	19.9	20.0	20.3	20.8
8H	4H	19.4	19.9	19.9	20.2	20.6	19.4	19.9	19.9	20.2	20.6
	6H	19.7	20.0	20.2	20.4	21.0	19.7	20.0	20.2	20.4	21.0
	8H	19.8	20.0	20.3	20.5	21.2	19.8	20.0	20.3	20.5	21.2
	12H	19.8	20.0	20.4	20.5	21.1	19.8	20.0	20.4	20.5	21.1
12H	4H	19.4	19.7	19.9	20.1	20.6	19.4	19.7	19.9	20.1	20.6
	6H	19.7	19.9	20.2	20.5	21.1	19.7	19.9	20.2	20.5	21.1
	8H	19.8	20.0	20.3	20.5	21.1	19.8	20.0	20.3	20.5	21.1
Variation of the observer position for the luminaire distance S											
S = 1.0H		1.8 / -0.9					1.8 / -0.9				
S = 1.5H		3.5 / -1.3					3.5 / -1.3				
S = 2.0H		5.0 / -1.7					5.0 / -1.7				
Standard table		n/a					n/a				
Correction summand		n/a					n/a				
Corrected glare indices referring to 2510 lm total luminous flux											