

## Light efficiency:

75 Lumen/Watt

## Color temperature:

2957 K

## Light quality:

CRI:92.1, R<sub>g</sub>:89.8, R<sub>f</sub>:102.2

P: 2 / V: - / F: 3

Output: 842 lm

Peak: 1369 cd

Power: 11.3 W

Voltage: 121 V

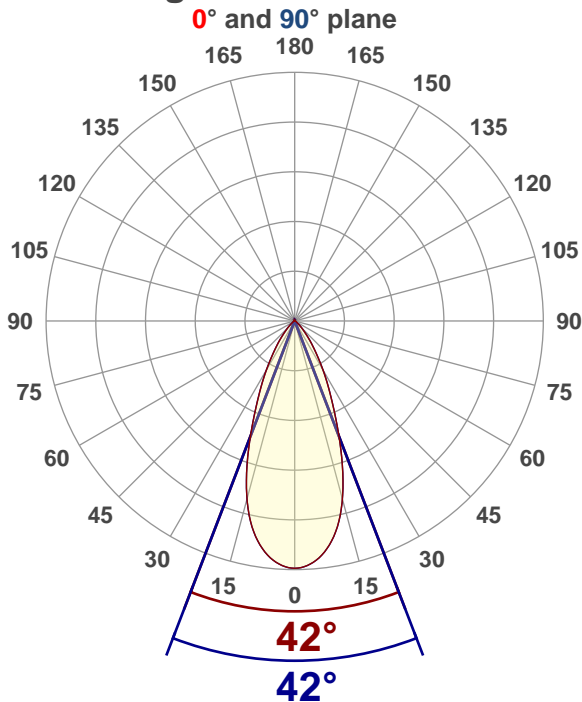
Current: 0.100 A

PF: 0.93

THD: 37.38 %



## Angular Distribution



Product name:

RA35x-12RG-DTW90WH

Test Date:

2021-11-03

Beam Angle (50% of the brightness of the centre):

42°

Field Angle (10% of the brightness of the centre):

75.7°

Cut Off Angle (2.5% of the brightness of the centre):

98°

## Beam Details

\*measured at centre of beam

Mounting Height (feet)/(meter)	Lux*	Footcandles*	Beam width (feet) / (meter)
4 ft / 1.2 m	921 lx	86 fc	3.1 ft / 0.9 m
8 ft / 2.4 m	230 lx	21 fc	6.1 ft / 1.9 m
12 ft / 3.7 m	102 lx	10 fc	9.2 ft / 2.8 m
16 ft / 4.9 m	58 lx	5 fc	12.3 ft / 3.7 m
20 ft / 6.1 m	37 lx	3 fc	15.4 ft / 4.7 m

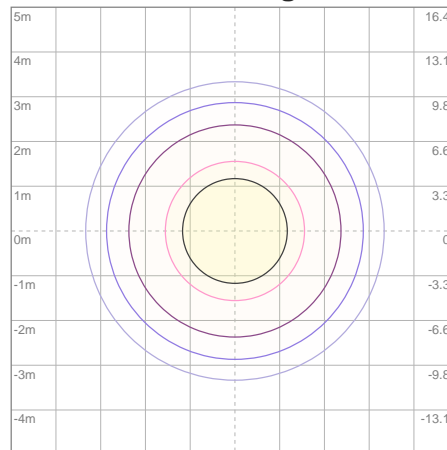
Beam center

## Photometric Testing Report

## Zonal Lumen Summary

Zone	Lumen	%Luminaire
0-30	627	74.47%
0-40	747	88.72%
0-60	807	95.84%
60-90	18.3	2.17%
70-100	12.2	1.45%
90-120	8.37	0.99%
0-90	826	98.10%
90-180	16.8	2.00%
0-180	842	100.00%

## ISO Lux Diagram



Lux at center:	147 lx
3%	4.41 lx
5%	7.35 lx
10%	14.70 lx
30%	44.10 lx
50%	73.50 lx
<b>Conditions:</b> Number of planes: 8 Lux distribution on a surface when lamp is mounted at 3.05 meters from the surface.	

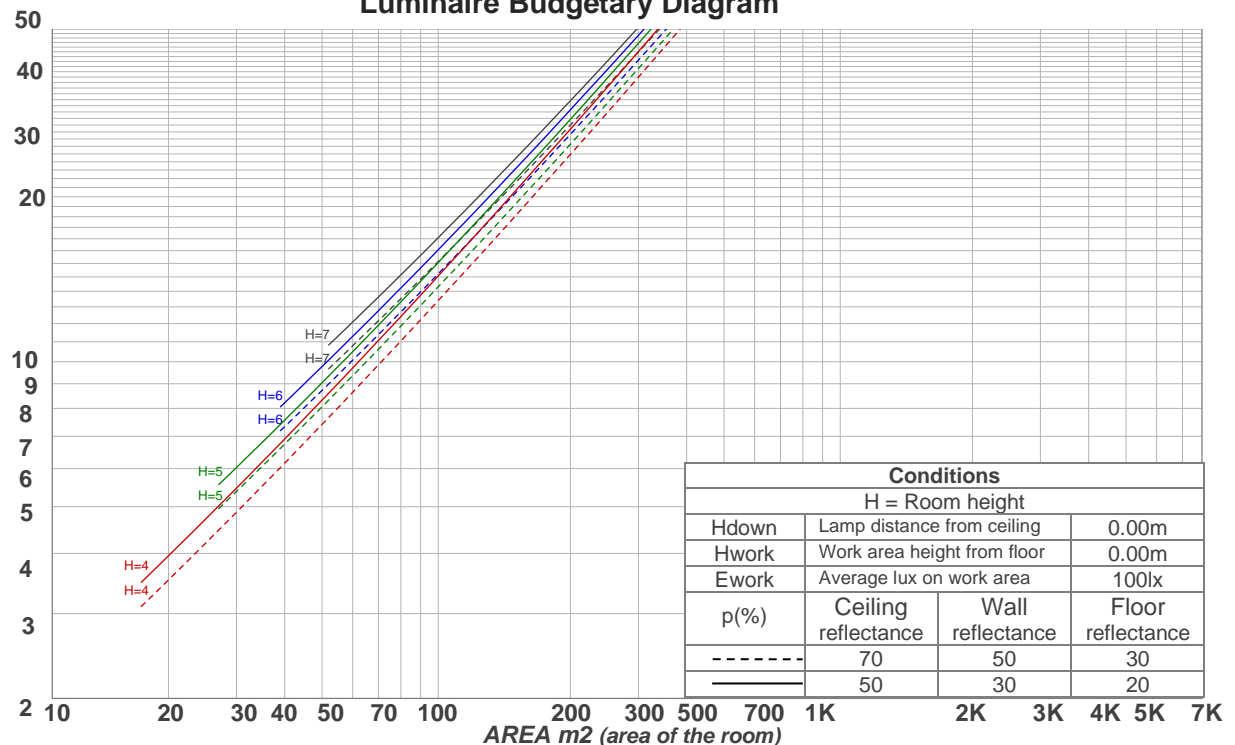
Mounting height: 3.05 meters (10 feet)

## Coefficients of Utilization

Ceiling reflectance	80				70				50			30			10			0
Wall reflectance	70	50	30	10	70	50	30	10	50	30	10	50	30	10	50	30	10	0
Floor reflectance	20	20	20	20	20	20	20	20	20	20	20	20	20	20	20	20	20	0
RCR	(RCR: Room Cavity Ratio) Room Values are expressed as percentage of Lumens delivered to the task surface																	
0	119	119	119	119	116	116	116	116	110	110	110	105	105	105	100	100	100	98
1	113	110	108	105	110	108	106	103	103	102	100	99	98	97	96	94	93	92
2	107	103	99	95	105	101	97	94	97	94	92	94	91	89	91	89	87	85
3	102	96	91	87	100	94	90	86	92	88	85	89	86	83	86	84	82	80
4	97	90	85	81	95	89	84	80	86	82	79	84	81	78	82	79	77	75
5	93	85	79	75	91	84	78	75	82	77	74	80	76	73	78	75	72	71
6	89	80	74	70	87	79	74	70	77	73	69	76	72	69	74	71	68	67
7	85	76	70	66	83	75	70	66	74	69	65	72	68	65	71	67	64	63
8	81	72	66	62	80	71	66	62	70	65	62	69	64	61	68	64	61	60
9	77	68	63	59	76	68	62	59	67	62	58	66	61	58	65	61	58	57
10	74	65	60	56	73	65	59	56	64	59	56	63	58	55	62	58	55	54

LAMPS (number of lamps)

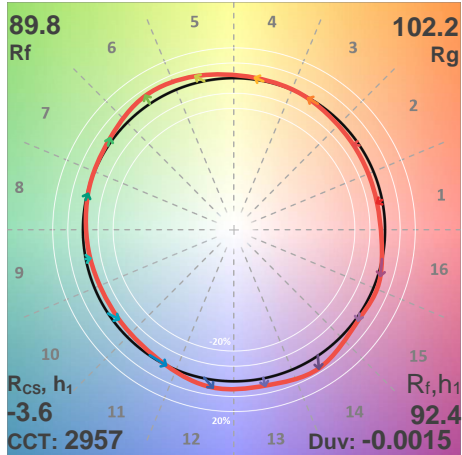
## Luminaire Budgetary Diagram



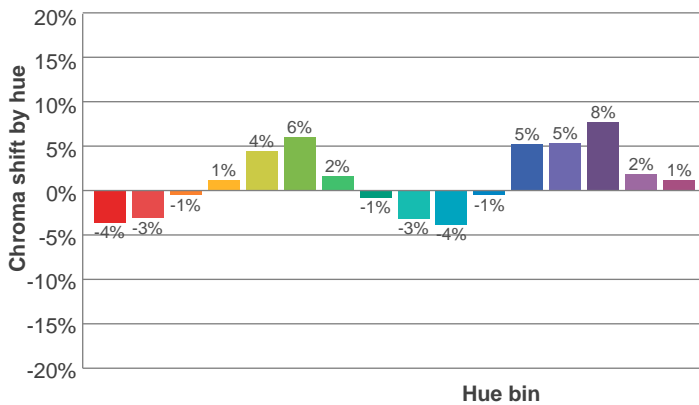
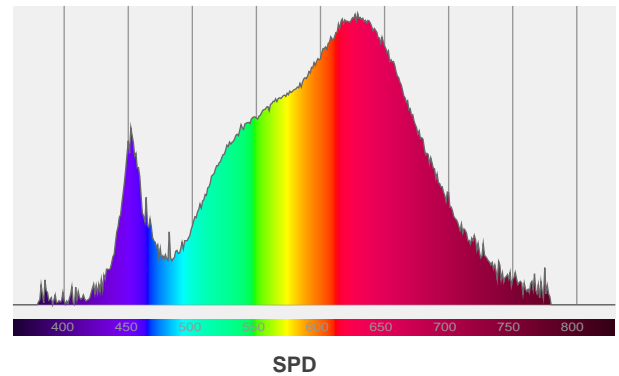
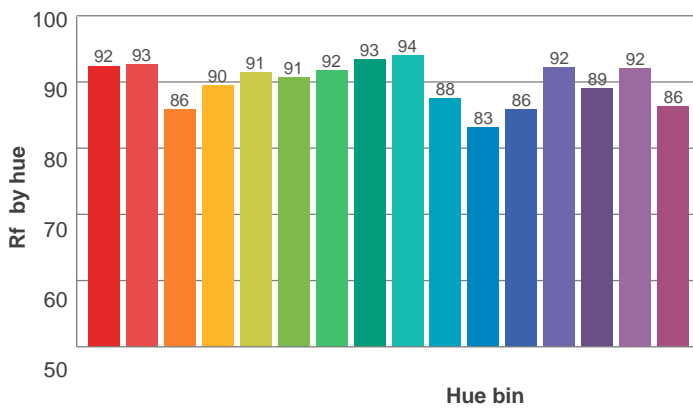
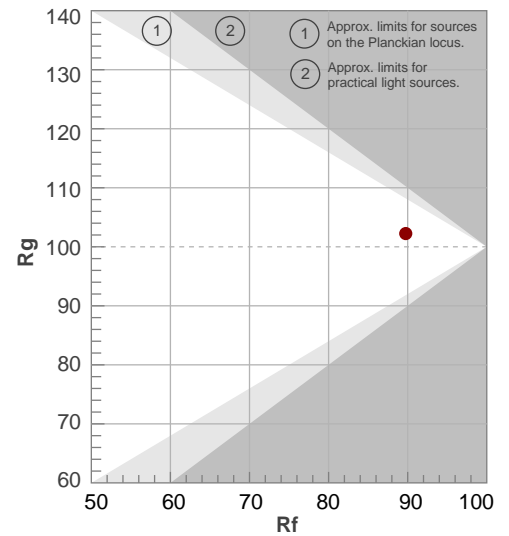
## Photometric Testing Report

ANSI/IES TM-30-18

P: 2 / V: - / F: 3



Hue Bin	$R_f$	Shifts (%)	
		Chroma	Hue
1	92	-4%	-1%
2	93	-3%	3%
3	86	-1%	7%
4	90	1%	6%
5	91	4%	5%
6	91	6%	-1%
7	92	2%	-5%
8	93	-1%	-4%
9	94	-3%	0%
10	88	-4%	7%
11	83	-1%	13%
12	86	5%	7%
13	92	5%	0%
14	89	8%	-4%
15	92	2%	-4%
16	86	1%	-11%



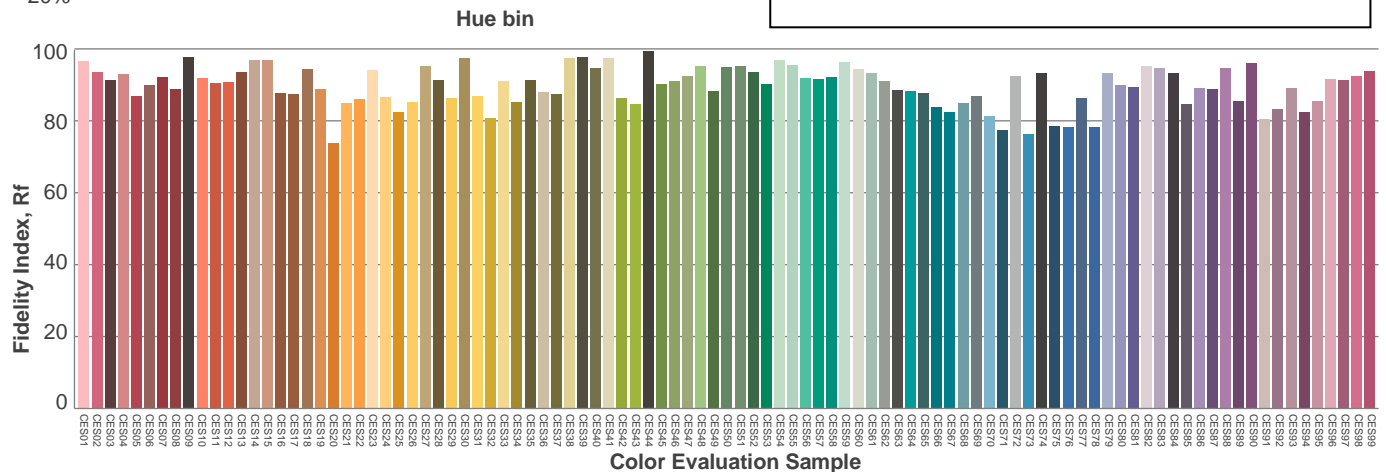
Red: 40.7%, Power=9.9mW

Blue: 7.6%, Power=3.8mW

Green: 23.5%, Power=10.5mW

UVA: 0.3%, Power=0.0mW

Dominant Wavelength: 584nm

1<sup>st</sup> Peak Wavelength: 629nm2<sup>nd</sup> Peak Wavelength: 452nm

### Glare Evaluation According to UGR

p Ceiling		70	70	50	50	30	70	70	50	50	30
p Walls		50	30	50	30	30	50	30	50	30	30
p Floor		20	20	20	20	20	20	20	20	20	20
Room size X      Y		Viewing direction at right angles to lamp axis					Viewing direction parallel to lamp axis				
2H	2H	28.6	29.2	28.7	29.4	29.6	28.6	29.2	28.7	29.4	29.6
	3H	28.4	29.1	28.7	29.3	29.5	28.4	29.1	28.7	29.3	29.5
	4H	28.3	29.0	28.7	29.3	29.5	28.3	29.0	28.7	29.3	29.5
	6H	28.4	29.0	28.7	29.3	29.6	28.4	29.0	28.7	29.3	29.6
	8H	28.3	28.9	28.7	29.2	29.6	28.3	28.9	28.7	29.2	29.6
	12H	28.3	28.9	28.6	29.2	29.6	28.3	28.9	28.6	29.2	29.6
4H	2H	28.2	29.0	28.6	29.2	29.4	28.2	29.0	28.6	29.2	29.4
	3H	28.3	28.8	28.6	29.2	29.6	28.3	28.8	28.6	29.2	29.6
	4H	28.2	28.7	28.6	29.2	29.7	28.2	28.7	28.6	29.2	29.7
	6H	28.2	28.8	28.7	29.1	29.4	28.2	28.8	28.7	29.1	29.4
	8H	28.2	28.7	28.7	29.0	29.4	28.2	28.7	28.7	29.0	29.4
	12H	28.1	28.5	28.6	28.9	29.4	28.1	28.5	28.6	28.9	29.4
8H	4H	28.1	28.6	28.6	29.0	29.3	28.1	28.6	28.6	29.0	29.3
	6H	28.1	28.5	28.6	28.9	29.5	28.1	28.5	28.6	28.9	29.5
	8H	28.2	28.5	28.7	29.0	29.6	28.2	28.5	28.7	29.0	29.6
	12H	28.2	28.4	28.8	28.9	29.5	28.2	28.4	28.8	28.9	29.5
12H	4H	28.1	28.5	28.6	28.9	29.3	28.1	28.5	28.6	28.9	29.3
	6H	28.2	28.4	28.7	28.9	29.6	28.2	28.4	28.7	28.9	29.6
	8H	28.1	28.4	28.7	28.9	29.5	28.1	28.4	28.7	28.9	29.5
Variation of the observer position for the luminaire distance S											
S = 1.0H		4.3 / -5.1					4.3 / -5.1				
S = 1.5H		6.8 / -6.0					6.8 / -6.0				
S = 2.0H		8.7 / -6.3					8.7 / -6.3				
Standard table		n/a					n/a				
Correction summand		n/a					n/a				
Corrected glare indices referring to 842 lm total luminous flux											

Due to our continued efforts to improve our products, product specifications are subject to change without notice. Please refer to our website for the latest test results.