

Light efficiency:

69 Lumen/Watt

Color temperature:

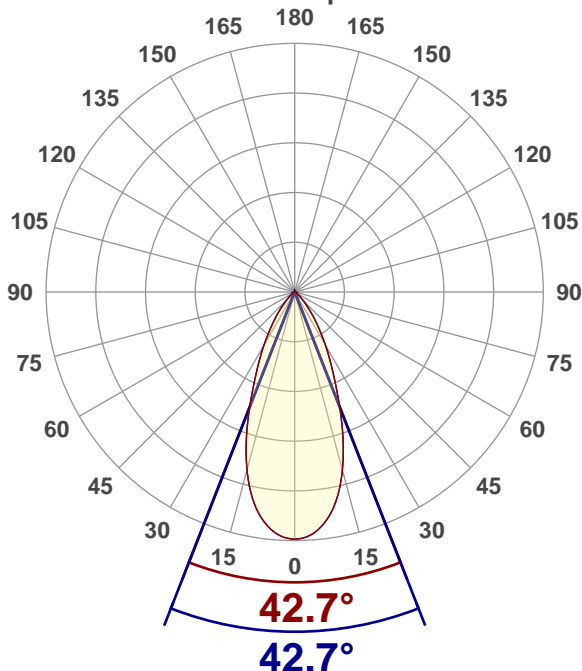
2756 K

Light quality:

CRI:95.7, R_g:94.5, R_f:99.2**P: 2 / V: - / F: 2****Output: 791 lm****Peak: 1248 cd****Power: 11.5 W****Voltage: 120 V****Current: 0.103 A****PF: 0.93****THD: 36.68 %**

Angular Distribution

0° and 90° plane



Product name:

RA35x-12RG-90WH - 2700K

Test Date:

2021-11-01

Beam Angle (50% of the brightness of the centre):
42.7°

Field Angle (10% of the brightness of the centre):
78°

Cut Off Angle (2.5% of the brightness of the centre):
99°

Beam Details

*measured at centre of beam

Mounting Height (feet)/(meter)	Lux*	Footcandles*	Beam width (feet) / (meter)
4 ft / 1.2 m	840 lx	78 fc	3.1 ft / 1 m
8 ft / 2.4 m	210 lx	20 fc	6.3 ft / 1.9 m
12 ft / 3.7 m	93 lx	9 fc	9.4 ft / 2.9 m
16 ft / 4.9 m	52 lx	5 fc	12.5 ft / 3.8 m
20 ft / 6.1 m	34 lx	3 fc	15.6 ft / 4.8 m

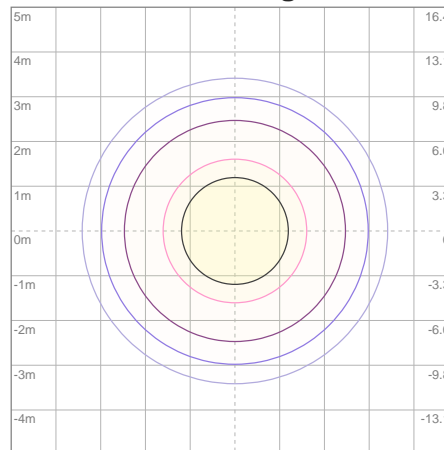
Beam center

Photometric Testing Report

Zonal Lumen Summary

Zone	Lumen	%Luminaire
0-30	583	73.70%
0-40	706	89.25%
0-60	767	96.97%
60-90	17.4	2.20%
70-100	10.0	1.26%
90-120	3.39	0.43%
0-90	785	99.24%
90-180	6.75	0.85%
0-180	791	100.00%

ISO Lux Diagram



Lux at center:	134 lx
3%	4.02 lx
5%	6.70 lx
10%	13.40 lx
30%	40.20 lx
50%	67.00 lx

Conditions:
Number of planes: 8
Lux distribution on a surface when lamp is mounted at 3.05 meters from the surface.

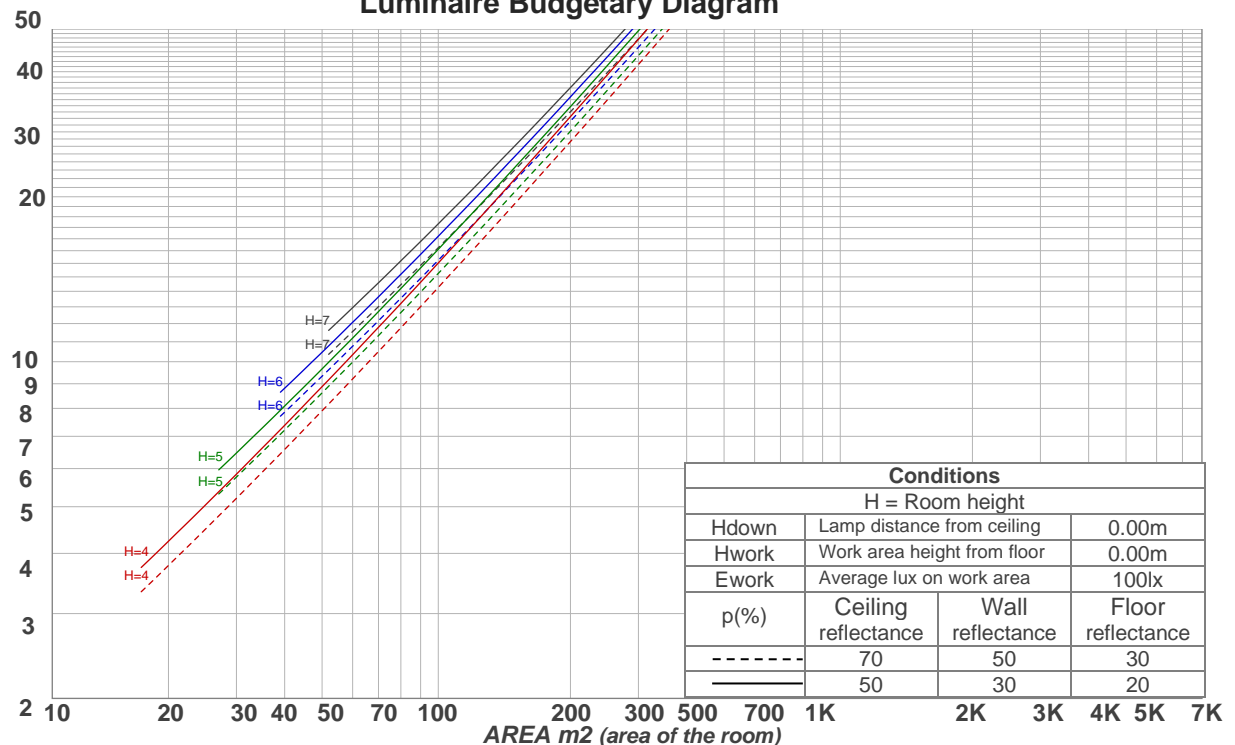
Mounting height: 3.05 meters (10 feet)

Coefficients of Utilization

Ceiling reflectance	80				70				50			30			10			0
Wall reflectance	70	50	30	10	70	50	30	10	50	30	10	50	30	10	50	30	10	0
Floor reflectance	20	20	20	20	20	20	20	20	20	20	20	20	20	20	20	20	20	0
RCR	(RCR: Room Cavity Ratio) Room Values are expressed as percentage of Lumens delivered to the task surface																	
0	119	119	119	119	116	116	116	116	111	111	111	106	106	106	101	101	101	99
1	113	110	108	106	111	108	106	104	104	102	100	100	99	97	96	95	94	92
2	108	103	99	95	105	101	97	94	98	95	92	94	92	90	92	90	88	86
3	102	96	91	87	100	95	90	86	92	88	85	89	86	83	87	84	82	80
4	97	90	85	80	96	89	84	80	87	82	79	84	81	78	83	79	77	75
5	93	85	79	75	91	84	78	74	82	77	74	80	76	73	78	75	72	71
6	88	80	74	70	87	79	74	70	77	73	69	76	72	69	75	71	68	67
7	84	75	70	66	83	75	69	65	73	69	65	72	68	65	71	67	64	63
8	81	72	66	62	79	71	65	62	70	65	61	69	64	61	68	64	61	59
9	77	68	62	58	76	67	62	58	66	61	58	65	61	58	65	61	58	56
10	74	65	59	55	73	64	59	55	63	58	55	63	58	55	62	58	55	53

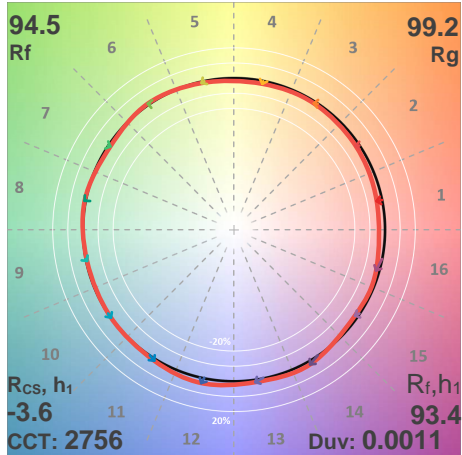
LAMPS (number of lamps)

Luminaire Budgetary Diagram

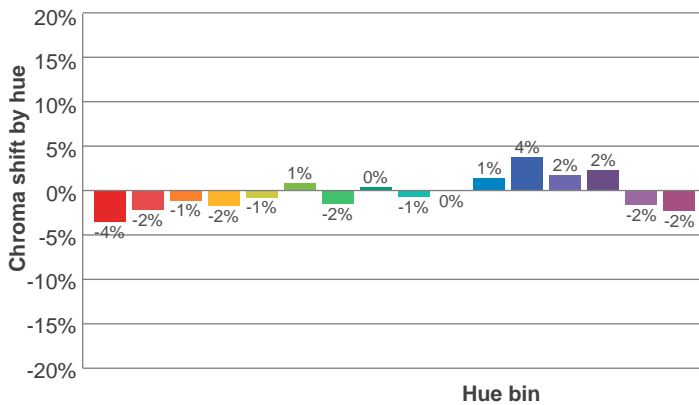
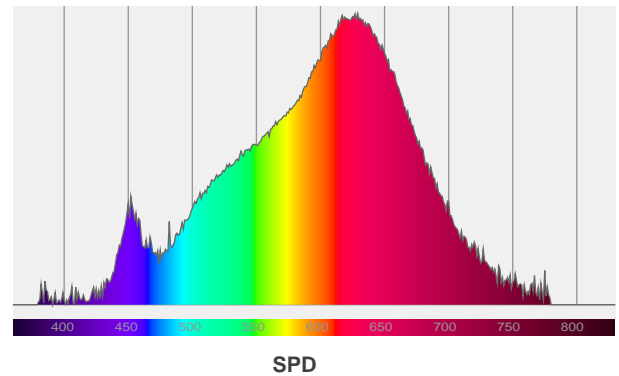
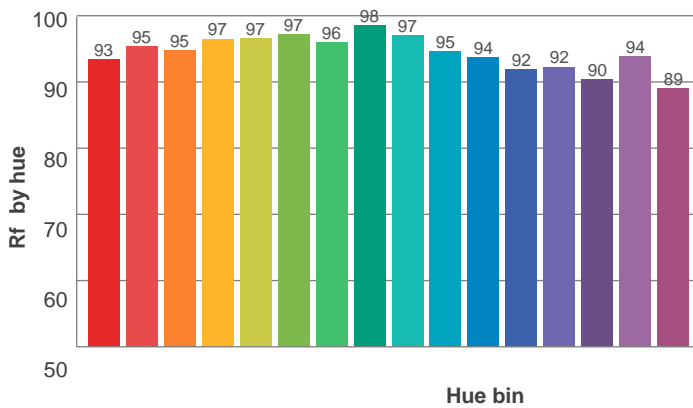
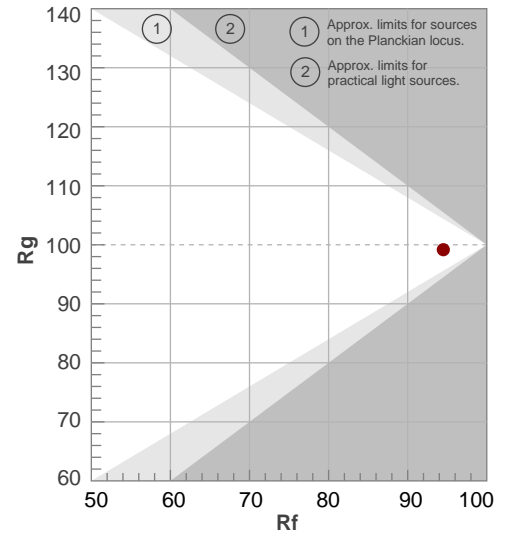


ANSI/IES TM-30-18

P: 2 / V: - / F: 2



Hue Bin	R _f	Shifts (%)	
		Chroma	Hue
1	93	-4%	0%
2	95	-2%	1%
3	95	-1%	2%
4	97	-2%	0%
5	97	-1%	2%
6	97	1%	1%
7	96	-2%	0%
8	98	0%	1%
9	97	-1%	1%
10	95	0%	3%
11	94	1%	4%
12	92	4%	-1%
13	92	2%	-6%
14	90	2%	-8%
15	94	-2%	-3%
16	89	-2%	-8%



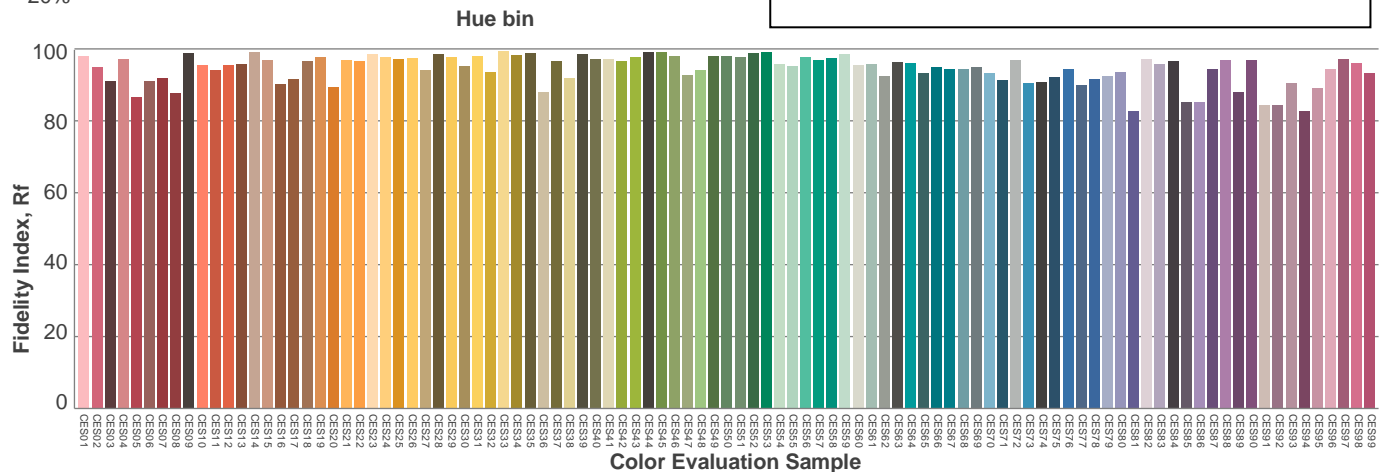
Red: 41.8%, Power=9.4mW

Blue: 6.8%, Power=3.1mW

Green: 23%, Power=9.0mW

UVA: 0.3%, Power=0.0mW

Dominant Wavelength: 584nm

1st Peak Wavelength: 629nm2nd Peak Wavelength: 618nm

Glare Evaluation According to UGR

p Ceiling		70	70	50	50	30	70	70	50	50	30
p Walls		50	30	50	30	30	50	30	50	30	30
p Floor		20	20	20	20	20	20	20	20	20	20
Room size X Y		Viewing direction at right angles to lamp axis					Viewing direction parallel to lamp axis				
2H	2H	28.9	29.5	29.0	29.8	30.0	28.9	29.5	29.0	29.8	30.0
	3H	28.7	29.5	29.1	29.7	29.8	28.7	29.5	29.1	29.7	29.8
	4H	28.7	29.4	29.1	29.6	29.9	28.7	29.4	29.1	29.6	29.9
	6H	28.7	29.3	29.0	29.6	30.0	28.7	29.3	29.0	29.6	30.0
	8H	28.7	29.3	29.0	29.6	30.0	28.7	29.3	29.0	29.6	30.0
	12H	28.6	29.2	29.0	29.5	30.0	28.6	29.2	29.0	29.5	30.0
4H	2H	28.6	29.3	29.0	29.6	29.8	28.6	29.3	29.0	29.6	29.8
	3H	28.6	29.2	29.0	29.5	30.0	28.6	29.2	29.0	29.5	30.0
	4H	28.5	29.1	29.0	29.5	30.0	28.5	29.1	29.0	29.5	30.0
	6H	28.5	29.1	29.0	29.4	29.8	28.5	29.1	29.0	29.4	29.8
	8H	28.5	29.0	29.0	29.3	29.7	28.5	29.0	29.0	29.3	29.7
	12H	28.5	28.9	29.0	29.3	29.7	28.5	28.9	29.0	29.3	29.7
8H	4H	28.4	28.9	28.9	29.3	29.7	28.4	28.9	28.9	29.3	29.7
	6H	28.4	28.8	29.0	29.3	29.8	28.4	28.8	29.0	29.3	29.8
	8H	28.5	28.8	29.0	29.3	29.9	28.5	28.8	29.0	29.3	29.9
	12H	28.5	28.7	29.1	29.2	29.8	28.5	28.7	29.1	29.2	29.8
12H	4H	28.4	28.8	28.9	29.2	29.6	28.4	28.8	28.9	29.2	29.6
	6H	28.5	28.7	29.0	29.3	29.9	28.5	28.7	29.0	29.3	29.9
	8H	28.4	28.7	29.0	29.2	29.8	28.4	28.7	29.0	29.2	29.8
Variation of the observer position for the luminaire distance S											
S = 1.0H		4.3 / -5.5					4.3 / -5.5				
S = 1.5H		6.8 / -6.3					6.8 / -6.3				
S = 2.0H		8.7 / -6.9					8.7 / -6.9				
Standard table		n/a					n/a				
Correction summand		n/a					n/a				
Corrected glare indices referring to 791 lm total luminous flux											