

## Light efficiency:

76 Lumen/Watt

## Color temperature:

3456 K

## Light quality:

CRI:96.6, R<sub>g</sub>:91.5, R<sub>f</sub>:97.6

P: 2 / V: - / F: 2

Output: 692 lm

Peak: 1072 cd

Power: 9.1 W

Voltage: 120 V

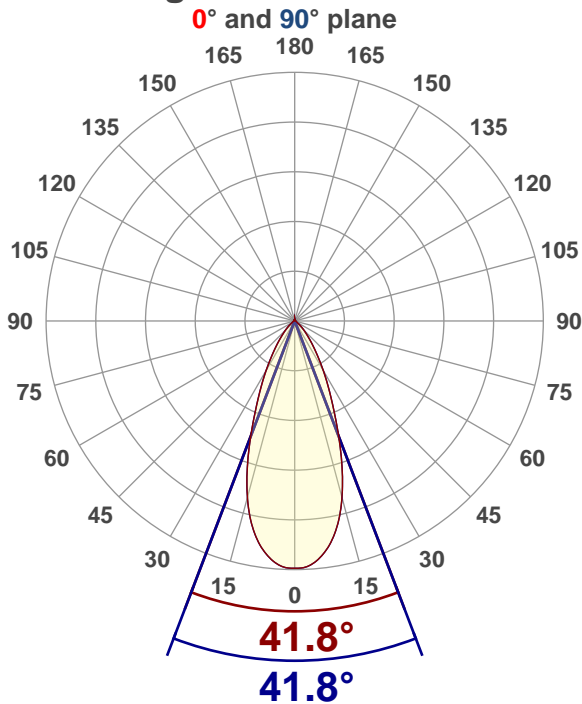
Current: 0.078 A

PF: 0.98

THD: 17.11 %



## Angular Distribution



Product name:

RA35x-9RG-90WH - 35K

Test Date:

2019-06-27

Beam Angle (50% of the brightness of the centre):  
41.8°Field Angle (10% of the brightness of the centre):  
77.4°Cut Off Angle (2.5% of the brightness of the centre):  
103.6°

## Beam Details

\*measured at centre of beam

Mounting Height (feet)/(meter)	Lux*	Footcandles*	Beam width (feet) / (meter)
4 ft / 1.2 m	721 lx	67 fc	3.1 ft / 0.9 m
8 ft / 2.4 m	180 lx	17 fc	6.1 ft / 1.9 m
12 ft / 3.7 m	80 lx	7 fc	9.2 ft / 2.8 m
16 ft / 4.9 m	45 lx	4 fc	12.2 ft / 3.7 m
20 ft / 6.1 m	29 lx	3 fc	15.3 ft / 4.6 m

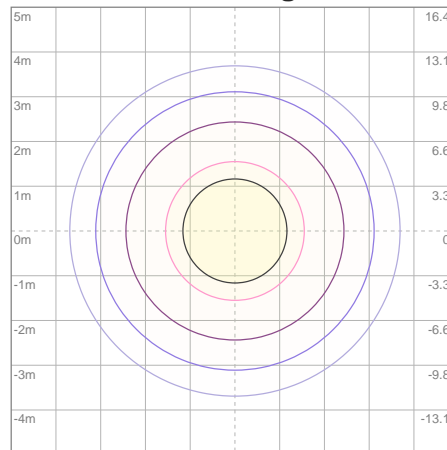
Beam center

# Photometric Testing Report

## Zonal Lumen Summary

Zone	Lumen	%Luminaire
0-30	489	70.66%
0-40	587	84.83%
0-60	649	93.79%
60-90	19.3	2.79%
70-100	13.9	2.01%
90-120	11.2	1.62%
0-90	668	96.53%
90-180	24.2	3.50%
0-180	692	100.00%

## ISO Lux Diagram



Lux at center:	115 lx
3%	3.45 lx
5%	5.75 lx
10%	11.50 lx
30%	34.50 lx
50%	57.50 lx

### Conditions:

Number of planes: 8

Lux distribution on a surface when lamp is mounted at 3.05 meters from the surface.

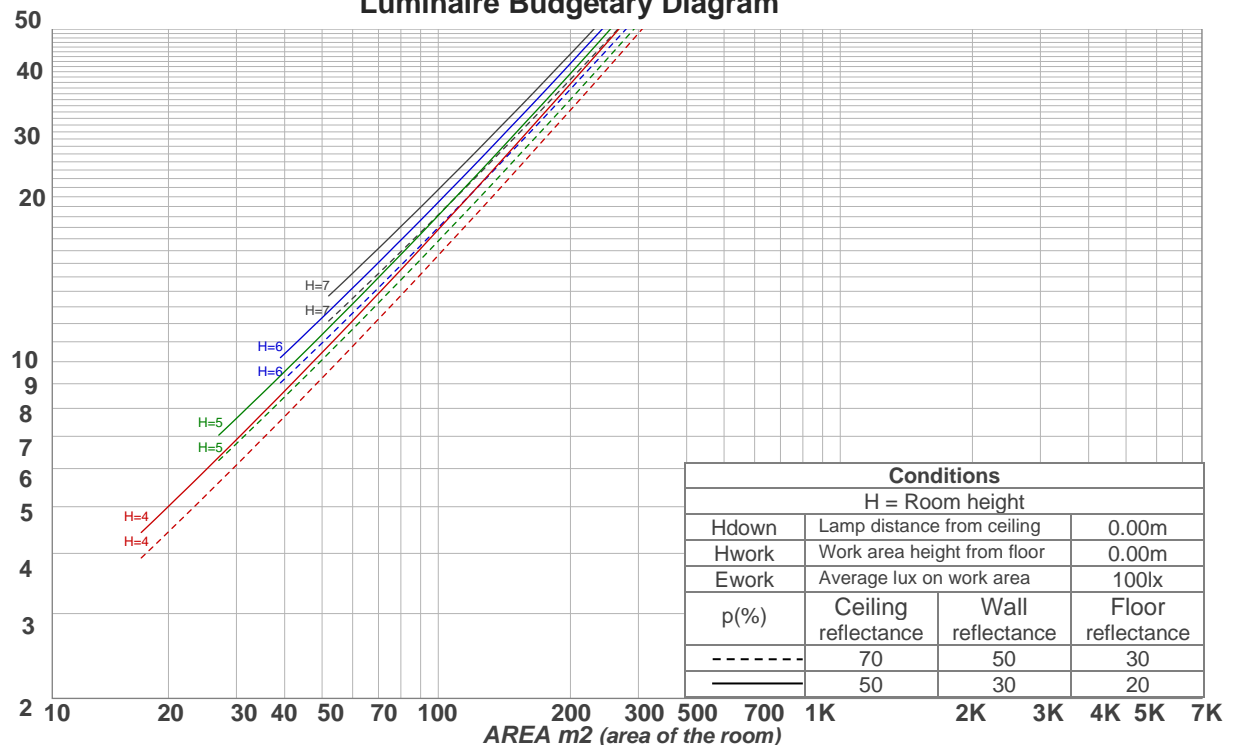
Mounting height: 3.05 meters (10 feet)

## Coefficients of Utilization

Ceiling reflectance	80				70				50			30			10			0
Wall reflectance	70	50	30	10	70	50	30	10	50	30	10	50	30	10	50	30	10	0
Floor reflectance	20	20	20	20	20	20	20	20	20	20	20	20	20	20	20	20	20	0
RCR	(RCR: Room Cavity Ratio) Room Values are expressed as percentage of Lumens delivered to the task surface																	
0	118	118	118	118	115	115	115	115	109	109	109	104	104	104	99	99	99	97
1	112	109	107	104	109	107	104	102	102	100	99	98	96	95	94	93	92	90
2	107	102	97	94	104	99	96	93	96	93	90	92	90	88	89	87	85	83
3	101	95	90	86	99	93	88	85	90	86	83	87	84	81	84	82	79	78
4	96	89	83	79	94	87	82	78	85	80	77	82	78	75	80	77	74	73
5	91	83	77	73	90	82	77	72	80	75	72	78	74	71	76	72	70	68
6	87	78	72	68	85	77	72	68	75	71	67	74	69	66	72	68	66	64
7	83	74	68	64	82	73	68	64	71	67	63	70	66	62	69	65	62	60
8	79	70	64	60	78	69	64	60	68	63	59	67	62	59	65	61	59	57
9	76	66	61	57	75	66	60	57	65	60	56	63	59	56	62	58	55	54
10	73	63	58	54	71	63	57	54	62	57	53	61	56	53	60	56	53	51

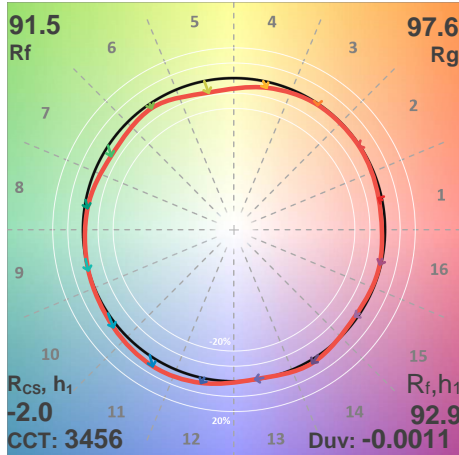
## LAMPS (number of lamps)

## Luminaire Budgetary Diagram

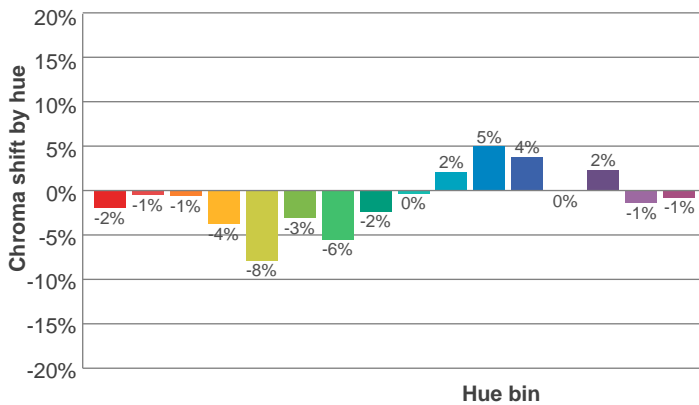
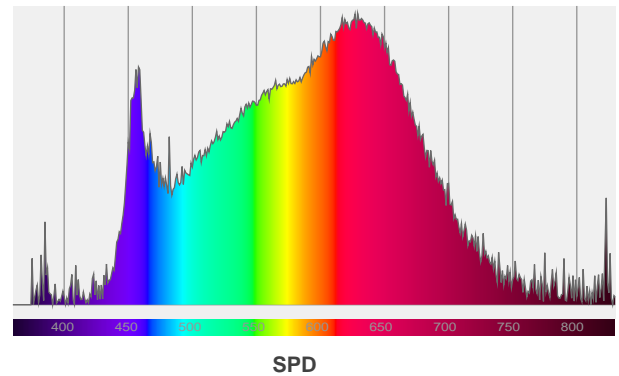
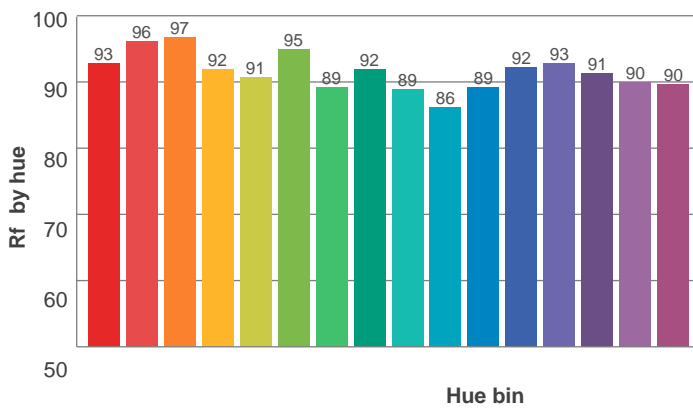
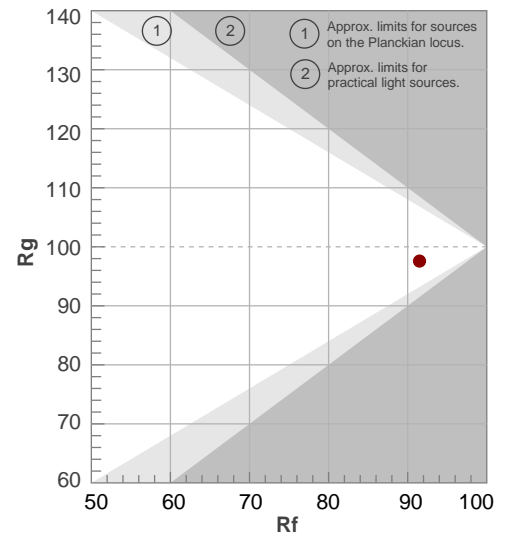


ANSI/IES TM-30-18

P: 2 / V: - / F: 2



Hue Bin	R <sub>f</sub>	Shifts (%)	
		Chroma	Hue
1	93	-2%	2%
2	96	-1%	0%
3	97	-1%	0%
4	92	-4%	-3%
5	91	-8%	-1%
6	95	-3%	1%
7	89	-6%	5%
8	92	-2%	5%
9	89	0%	8%
10	86	2%	9%
11	89	5%	6%
12	92	4%	-1%
13	93	0%	-5%
14	91	2%	-6%
15	90	-1%	-3%
16	90	-1%	-4%



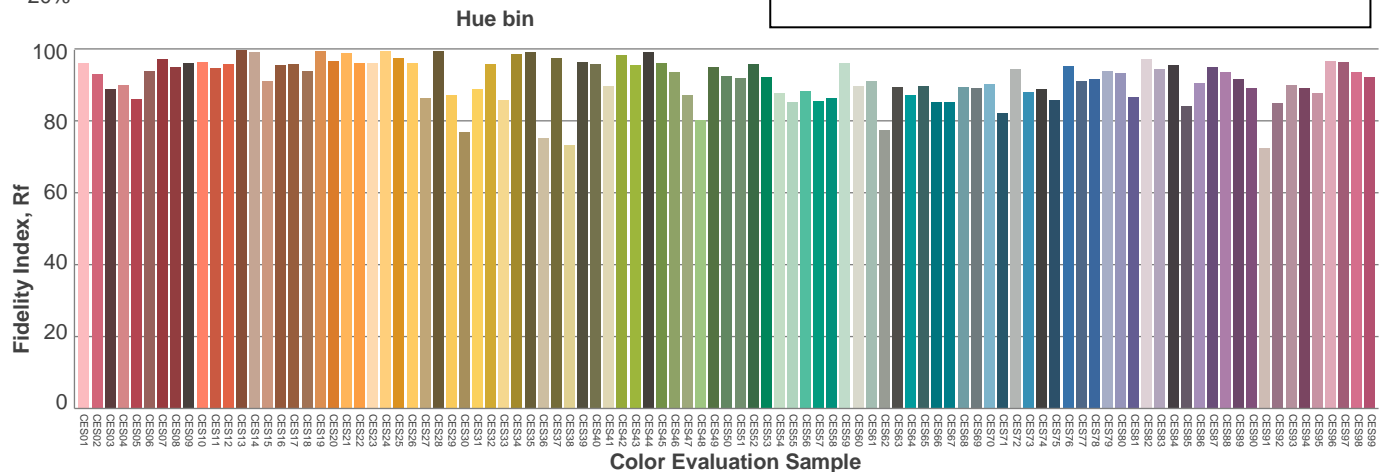
Red: 36%, Power=7.7mW

Blue: 12.4%, Power=6.5mW

Green: 24.4%, Power=8.6mW

UVA: 0.8%, Power=2.1mW

Dominant Wavelength: 583nm

1<sup>st</sup> Peak Wavelength: 629nm2<sup>nd</sup> Peak Wavelength: 618nm

### Glare Evaluation According to UGR

p Ceiling		70	70	50	50	30	70	70	50	50	30
p Walls		50	30	50	30	30	50	30	50	30	30
p Floor		20	20	20	20	20	20	20	20	20	20
Room size X      Y		Viewing direction at right angles to lamp axis					Viewing direction parallel to lamp axis				
2H	2H	19.8	20.4	19.9	20.7	21.0	19.8	20.4	19.9	20.7	21.0
	3H	19.9	20.6	20.3	20.9	21.1	19.9	20.6	20.3	20.9	21.1
	4H	20.0	20.7	20.5	21.0	21.3	20.0	20.7	20.5	21.0	21.3
	6H	20.3	20.9	20.6	21.2	21.7	20.3	20.9	20.6	21.2	21.7
	8H	20.4	21.0	20.8	21.4	21.8	20.4	21.0	20.8	21.4	21.8
	12H	20.6	21.2	21.0	21.6	22.0	20.6	21.2	21.0	21.6	22.0
4H	2H	19.6	20.3	20.0	20.6	20.9	19.6	20.3	20.0	20.6	20.9
	3H	20.0	20.6	20.4	21.0	21.5	20.0	20.6	20.4	21.0	21.5
	4H	20.2	20.8	20.7	21.2	21.8	20.2	20.8	20.7	21.2	21.8
	6H	20.6	21.1	21.1	21.5	21.9	20.6	21.1	21.1	21.5	21.9
	8H	20.8	21.3	21.3	21.7	22.1	20.8	21.3	21.3	21.7	22.1
	12H	21.1	21.5	21.6	21.9	22.4	21.1	21.5	21.6	21.9	22.4
8H	4H	20.3	20.8	20.8	21.2	21.6	20.3	20.8	20.8	21.2	21.6
	6H	20.8	21.1	21.3	21.6	22.2	20.8	21.1	21.3	21.6	22.2
	8H	21.2	21.4	21.7	22.0	22.7	21.2	21.4	21.7	22.0	22.7
	12H	21.6	21.9	22.3	22.4	23.1	21.6	21.9	22.3	22.4	23.1
12H	4H	20.3	20.7	20.8	21.1	21.6	20.3	20.7	20.8	21.1	21.6
	6H	20.9	21.2	21.4	21.7	22.4	20.9	21.2	21.4	21.7	22.4
	8H	21.3	21.5	21.9	22.1	22.7	21.3	21.5	21.9	22.1	22.7
Variation of the observer position for the luminaire distance S											
S = 1.0H		1.6 / -1.1					1.6 / -1.1				
S = 1.5H		3.2 / -1.4					3.2 / -1.4				
S = 2.0H		4.8 / -1.6					4.8 / -1.6				
Standard table		n/a					n/a				
Correction summand		n/a					n/a				
Corrected glare indices referring to 692 lm total luminous flux											