

## Light efficiency:

**72 Lumen/Watt**

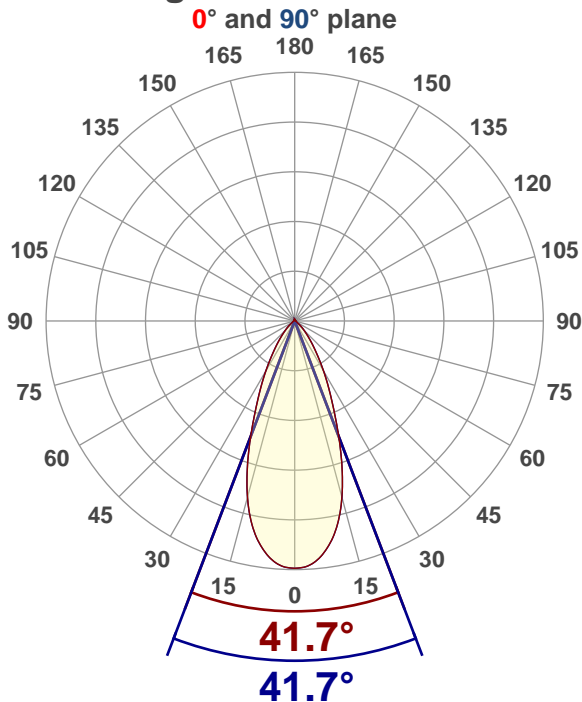
## Color temperature:

**3123 K**

## Light quality:

**CRI:96.3, R<sub>g</sub>:91.9, R<sub>f</sub>:97.7****P: 2 / V: - / F: 2****Output: 660 lm****Peak: 1013 cd****Power: 9.2 W****Voltage: 120 V****Current: 0.078 A****PF: 0.98****THD: 16.91 %**

## Angular Distribution



Product name:

**RA35x-9RG-90WH - 30K**

Test Date:

**2019-06-27**Beam Angle (50% of the brightness of the centre):  
**41.7°**Field Angle (10% of the brightness of the centre):  
**77.8°**Cut Off Angle (2.5% of the brightness of the centre):  
**103.9°**

## Beam Details

\*measured at centre of beam

Mounting Height (feet)/(meter)	Lux*	Footcandles*	Beam width (feet) / (meter)
4 ft / 1.2 m	681 lx	63 fc	3.1 ft / 0.9 m
8 ft / 2.4 m	170 lx	16 fc	6.1 ft / 1.9 m
12 ft / 3.7 m	76 lx	7 fc	9.2 ft / 2.8 m
16 ft / 4.9 m	43 lx	4 fc	12.2 ft / 3.7 m
20 ft / 6.1 m	27 lx	3 fc	15.3 ft / 4.6 m

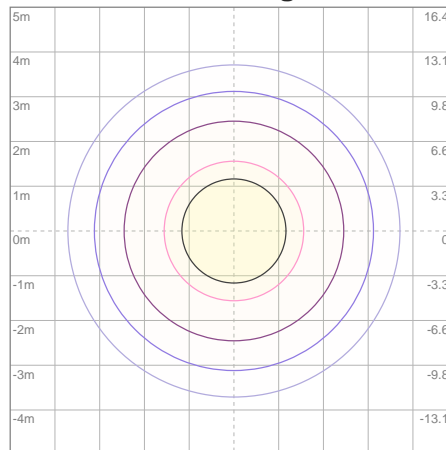
Beam center

## Photometric Testing Report

## Zonal Lumen Summary

Zone	Lumen	%Luminaire
0-30	462	70.00%
0-40	556	84.24%
0-60	616	93.33%
60-90	19.4	2.94%
70-100	14.2	2.15%
90-120	11.5	1.74%
0-90	636	96.36%
90-180	24.3	3.68%
0-180	660	100.00%

## ISO Lux Diagram



Mounting height: 3.05 meters (10 feet)

Lux at center:	109 lx
3%	3.27 lx
5%	5.45 lx
10%	10.90 lx
30%	32.70 lx
50%	54.50 lx

## Conditions:

Number of planes: 8

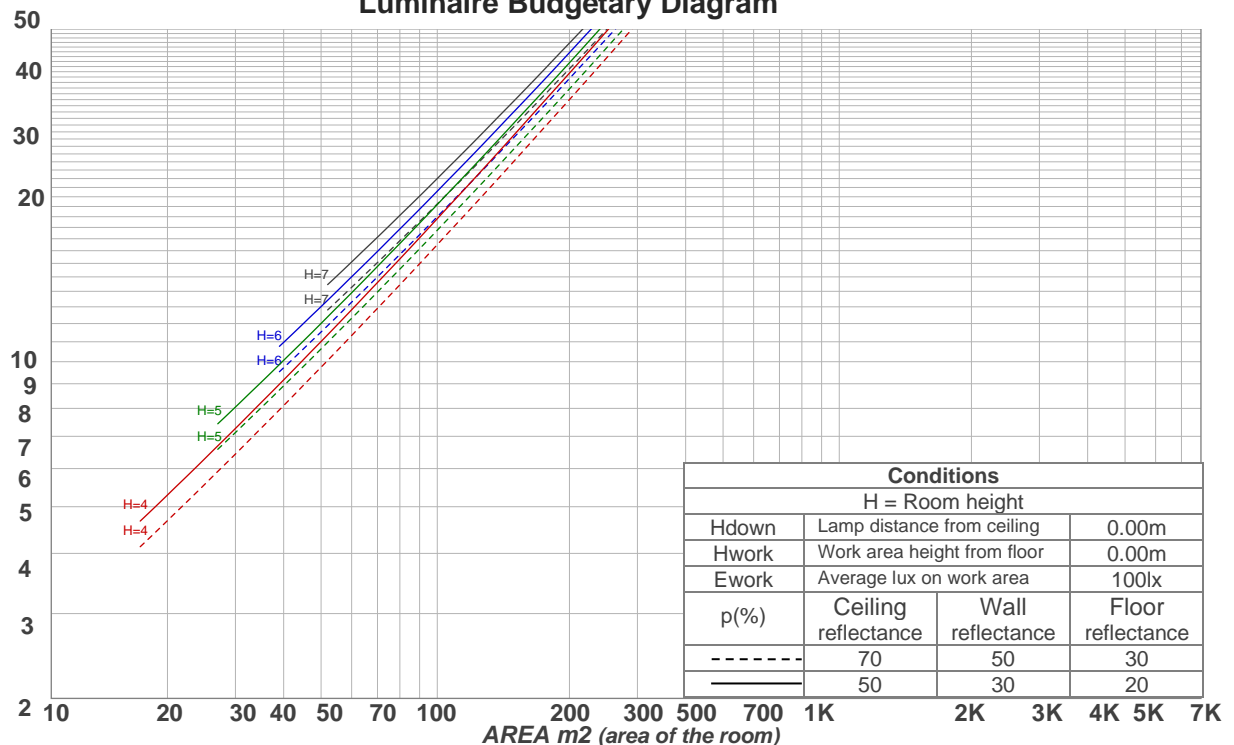
Lux distribution on a surface when lamp is mounted at 3.05 meters from the surface.

## Coefficients of Utilization

Ceiling reflectance	80				70				50			30			10			0
Wall reflectance	70	50	30	10	70	50	30	10	50	30	10	50	30	10	50	30	10	0
Floor reflectance	20	20	20	20	20	20	20	20	20	20	20	20	20	20	20	20	20	0
RCR	(RCR: Room Cavity Ratio)				Room Values are expressed as percentage of Lumens delivered to the task surface													
0	118	118	118	118	115	115	115	115	109	109	109	104	104	104	99	99	99	96
1	112	109	107	104	109	107	104	102	102	100	98	98	96	95	94	92	91	89
2	106	101	97	94	104	99	96	92	95	92	90	92	89	87	89	87	85	83
3	101	94	89	85	99	93	88	84	90	86	83	87	83	81	84	81	79	77
4	96	88	83	78	94	87	82	78	84	80	76	82	78	75	80	76	74	72
5	91	83	77	73	89	82	76	72	80	75	71	77	73	70	76	72	69	68
6	87	78	72	68	85	77	71	67	75	70	67	73	69	66	72	68	65	64
7	83	74	68	64	81	73	67	63	71	66	63	70	65	62	68	64	61	60
8	79	70	64	60	78	69	63	60	68	63	59	66	62	59	65	61	58	57
9	76	66	60	56	74	66	60	56	64	59	56	63	59	55	62	58	55	54
10	72	63	57	53	71	62	57	53	61	56	53	60	56	53	59	55	52	51

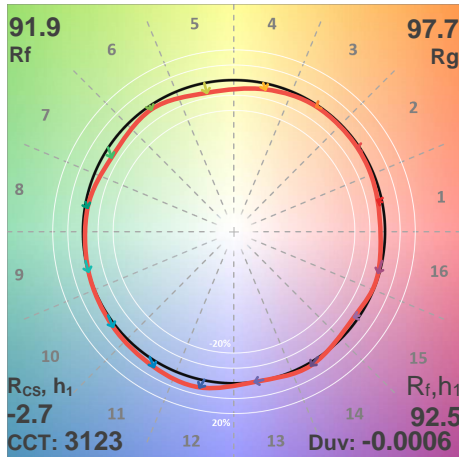
## LAMPS (number of lamps)

## Luminaire Budgetary Diagram

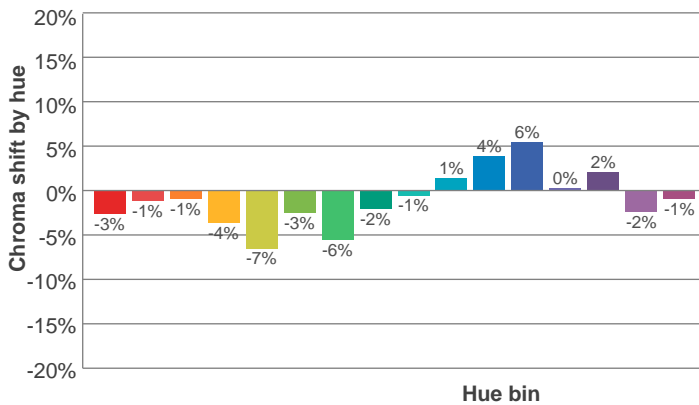
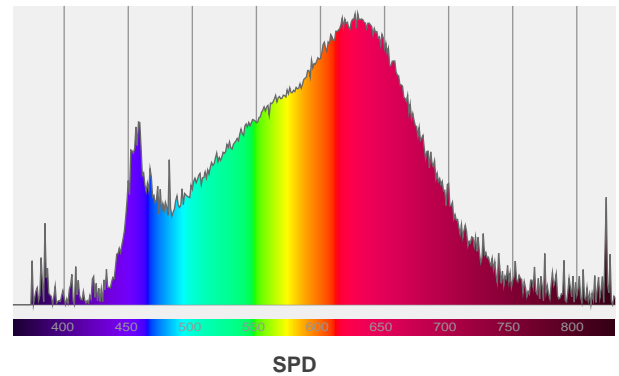
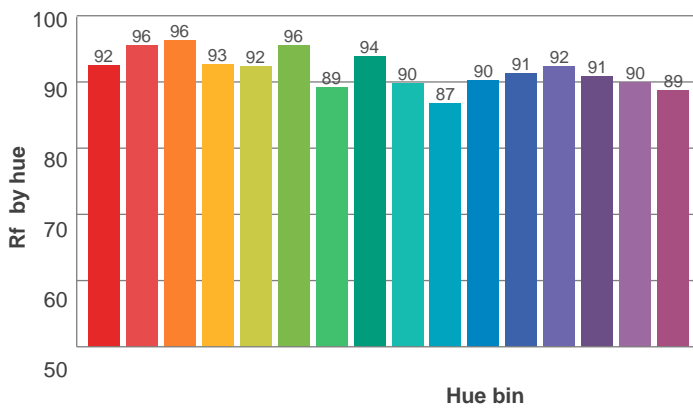
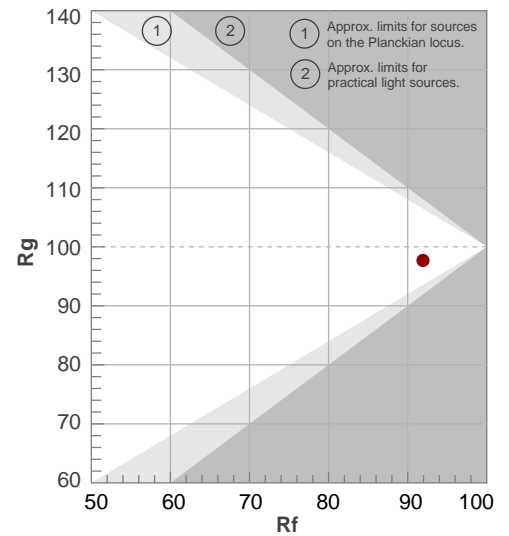


ANSI/IES TM-30-18

P: 2 / V: - / F: 2



Hue Bin	R <sub>f</sub>	Shifts (%)	
		Chroma	Hue
1	92	-3%	2%
2	96	-1%	1%
3	96	-1%	1%
4	93	-4%	-2%
5	92	-7%	0%
6	96	-3%	1%
7	89	-6%	4%
8	94	-2%	3%
9	90	-1%	7%
10	87	1%	8%
11	90	4%	6%
12	91	6%	-2%
13	92	0%	-6%
14	91	2%	-7%
15	90	-2%	-3%
16	89	-1%	-8%



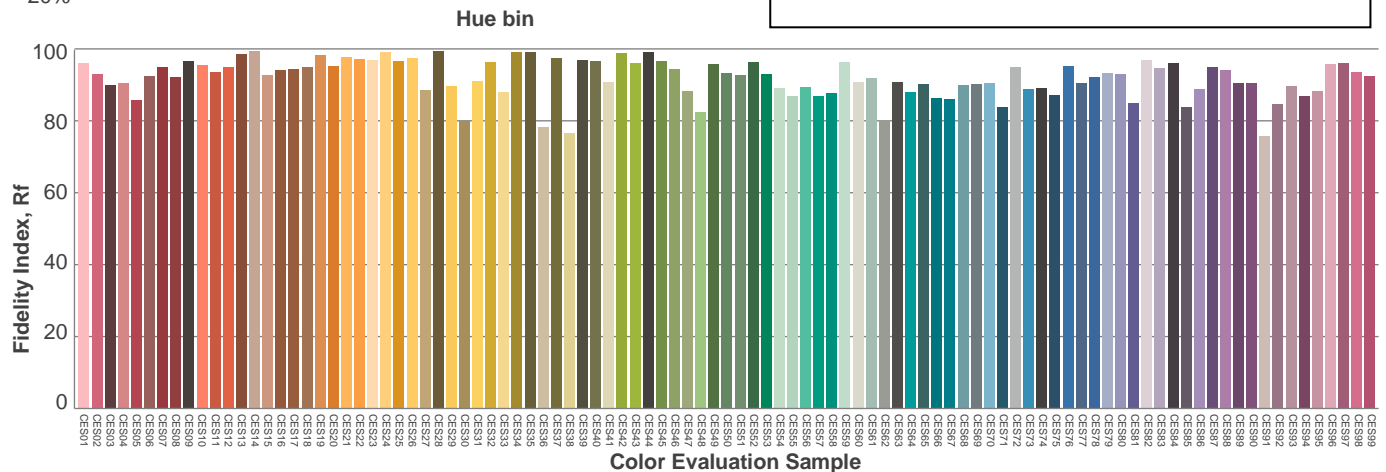
Red: 38.4%, Power=7.8mW

Blue: 10.4%, Power=5.1mW

Green: 23.3%, Power=7.8mW

UVA: 0.8%, Power=2.0mW

Dominant Wavelength: 583nm

1<sup>st</sup> Peak Wavelength: 629nm2<sup>nd</sup> Peak Wavelength: 618nm

## Glare Evaluation According to UGR

p Ceiling		70	70	50	50	30	70	70	50	50	30
p Walls		50	30	50	30	30	50	30	50	30	30
p Floor		20	20	20	20	20	20	20	20	20	20
Room size X      Y		Viewing direction at right angles to lamp axis					Viewing direction parallel to lamp axis				
2H	2H	19.7	20.3	19.9	20.6	20.9	19.7	20.3	19.9	20.6	20.9
	3H	19.8	20.6	20.2	20.8	21.1	19.8	20.6	20.2	20.8	21.1
	4H	20.0	20.7	20.4	21.0	21.3	20.0	20.7	20.4	21.0	21.3
	6H	20.3	20.9	20.6	21.2	21.6	20.3	20.9	20.6	21.2	21.6
	8H	20.4	21.0	20.8	21.4	21.8	20.4	21.0	20.8	21.4	21.8
	12H	20.6	21.2	21.0	21.6	22.0	20.6	21.2	21.0	21.6	22.0
4H	2H	19.5	20.2	19.9	20.5	20.8	19.5	20.2	19.9	20.5	20.8
	3H	20.0	20.6	20.4	21.0	21.4	20.0	20.6	20.4	21.0	21.4
	4H	20.2	20.8	20.7	21.2	21.8	20.2	20.8	20.7	21.2	21.8
	6H	20.6	21.1	21.1	21.5	21.9	20.6	21.1	21.1	21.5	21.9
	8H	20.8	21.3	21.3	21.7	22.1	20.8	21.3	21.3	21.7	22.1
	12H	21.1	21.5	21.6	22.0	22.5	21.1	21.5	21.6	22.0	22.5
8H	4H	20.3	20.8	20.9	21.2	21.6	20.3	20.8	20.9	21.2	21.6
	6H	20.8	21.2	21.4	21.7	22.3	20.8	21.2	21.4	21.7	22.3
	8H	21.2	21.5	21.8	22.1	22.7	21.2	21.5	21.8	22.1	22.7
	12H	21.7	21.9	22.3	22.5	23.2	21.7	21.9	22.3	22.5	23.2
12H	4H	20.3	20.7	20.8	21.1	21.7	20.3	20.7	20.8	21.1	21.7
	6H	20.9	21.2	21.5	21.8	22.4	20.9	21.2	21.5	21.8	22.4
	8H	21.3	21.5	21.9	22.1	22.8	21.3	21.5	21.9	22.1	22.8
Variation of the observer position for the luminaire distance S											
S = 1.0H		1.5 / -1.0					1.5 / -1.0				
S = 1.5H		3.1 / -1.3					3.1 / -1.3				
S = 2.0H		4.6 / -1.5					4.6 / -1.5				
Standard table		n/a					n/a				
Correction summand		n/a					n/a				
Corrected glare indices referring to 660 lm total luminous flux											