

Light efficiency:

75 Lumen/Watt

Color temperature:

5062 K

Light quality:

CRI:92.6, R_g:90.4, R_f:97.6

P: 2 / V: - / F: 3

Output: 858 lm

Peak: 1628 cd

Power: 11.4 W

Voltage: 120 V

Current: 0.097 A

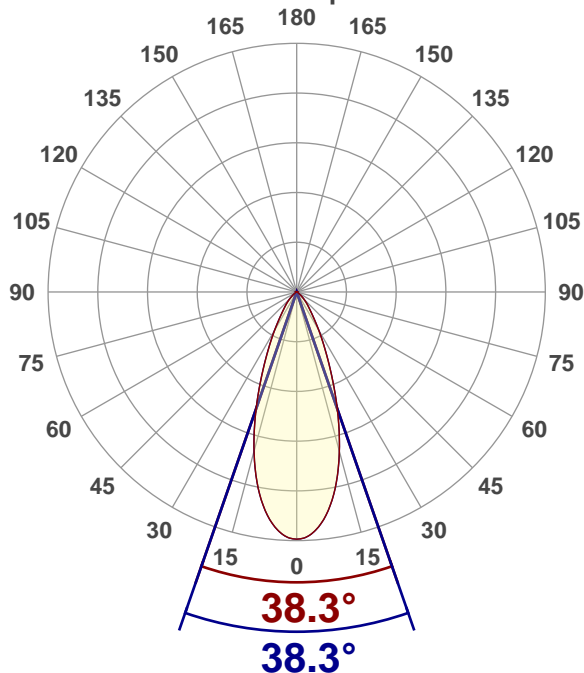
PF: 0.98

THD: 8.23 %



Angular Distribution

0° and 90° plane



Product name:

RA4-12RG-90WH 5000K

Test Date:

2021-10-22

Beam Angle (50% of the brightness of the centre):
38.3°Field Angle (10% of the brightness of the centre):
71.1°Cut Off Angle (2.5% of the brightness of the centre):
98.3°

Beam Details

*measured at centre of beam

Mounting Height (feet)/(meter)	Lux*	Footcandles*	Beam width (feet) / (meter)
4 ft / 1.2 m	1095 lx	102 fc	2.8 ft / 0.8 m
8 ft / 2.4 m	274 lx	25 fc	5.6 ft / 1.7 m
12 ft / 3.7 m	122 lx	11 fc	8.3 ft / 2.5 m
16 ft / 4.9 m	68 lx	6 fc	11.1 ft / 3.4 m
20 ft / 6.1 m	44 lx	4 fc	13.9 ft / 4.2 m

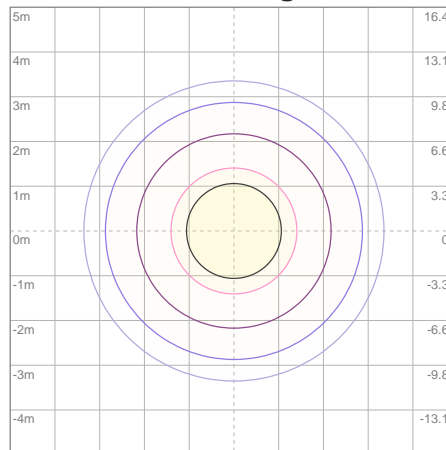
Beam center

Photometric Testing Report

Zonal Lumen Summary

Zone	Lumen	%Luminaire
0-30	662	77.16%
0-40	773	90.09%
0-60	843	98.25%
60-90	14.6	1.70%
70-100	7.84	0.91%
90-120	0.354	0.04%
0-90	857	99.88%
90-180	0.354	0.04%
0-180	858	100.00%

ISO Lux Diagram



Mounting height: 3.05 meters (10 feet)

Lux at center:	175 lx
3%	5.25 lx
5%	8.75 lx
10%	17.50 lx
30%	52.50 lx
50%	87.50 lx

Conditions:

Number of planes: 8

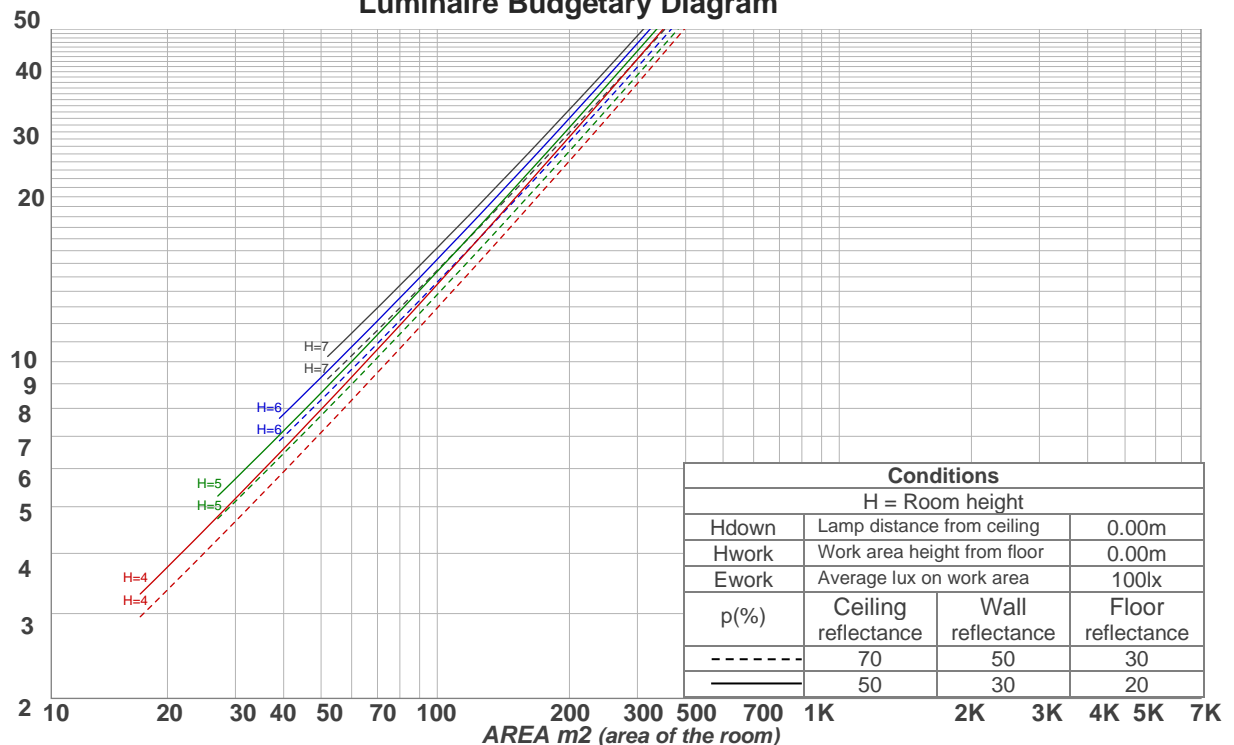
Lux distribution on a surface when lamp is mounted at 3.05 meters from the surface.

Coefficients of Utilization

Ceiling reflectance	80				70				50			30			10			0
Wall reflectance	70	50	30	10	70	50	30	10	50	30	10	50	30	10	50	30	10	0
Floor reflectance	20	20	20	20	20	20	20	20	20	20	20	20	20	20	20	20	20	0
RCR	(RCR: Room Cavity Ratio) Room Values are expressed as percentage of Lumens delivered to the task surface																	
0	119	119	119	119	116	116	116	116	111	111	111	106	106	106	102	102	102	100
1	114	111	108	106	111	109	107	105	105	103	101	101	100	98	98	96	95	94
2	108	104	100	96	106	102	98	95	99	96	93	96	93	91	93	91	89	88
3	103	97	92	89	101	96	91	88	93	90	86	91	88	85	89	86	84	82
4	99	91	86	82	97	90	85	82	88	84	81	86	83	80	84	81	79	77
5	94	86	81	77	93	85	80	76	84	79	76	82	78	75	80	77	74	73
6	90	82	76	72	89	81	76	72	79	75	71	78	74	71	77	73	70	69
7	86	77	72	68	85	77	71	68	75	71	67	74	70	67	73	69	67	65
8	82	74	68	64	81	73	68	64	72	67	64	71	67	64	70	66	63	62
9	79	70	65	61	78	70	64	61	69	64	61	68	64	60	67	63	60	59
10	76	67	62	58	75	67	61	58	66	61	58	65	61	58	64	60	57	56

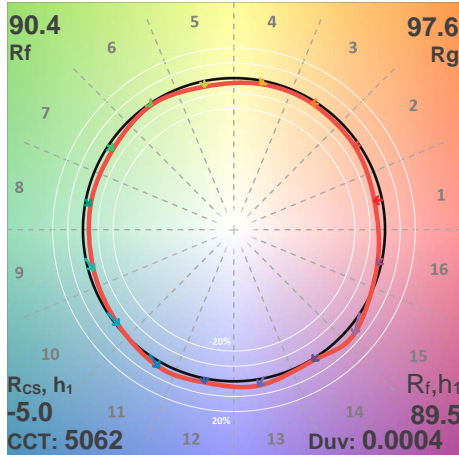
LAMPS (number of lamps)

Luminaire Budgetary Diagram

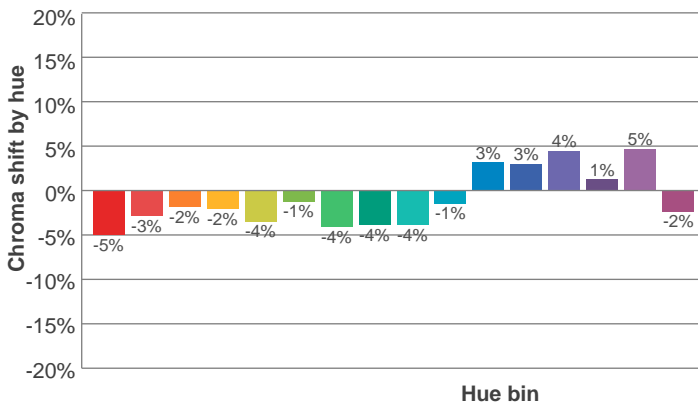
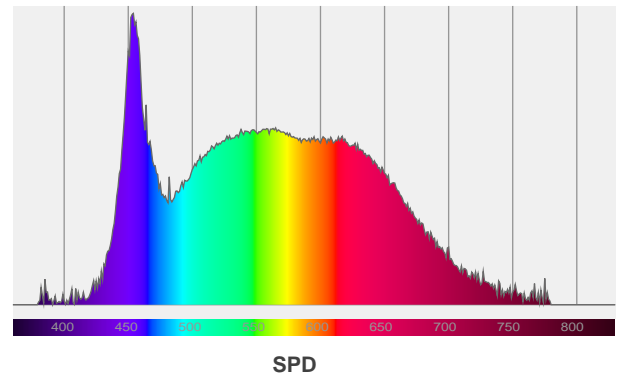
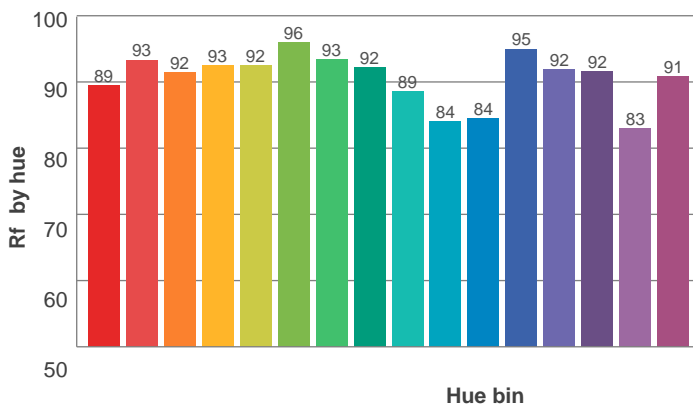
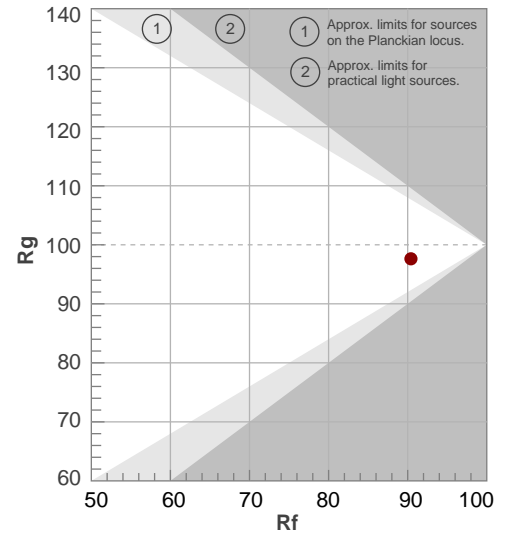


ANSI/IES TM-30-18

P: 2 / V: - / F: 3



Hue Bin	R _f	Shifts (%)	
		Chroma	Hue
1	89	-5%	1%
2	93	-3%	2%
3	92	-2%	4%
4	93	-2%	1%
5	92	-4%	1%
6	96	-1%	0%
7	93	-4%	0%
8	92	-4%	3%
9	89	-4%	8%
10	84	-1%	10%
11	84	3%	9%
12	95	3%	1%
13	92	4%	-4%
14	92	1%	-5%
15	83	5%	-13%
16	91	-2%	-4%



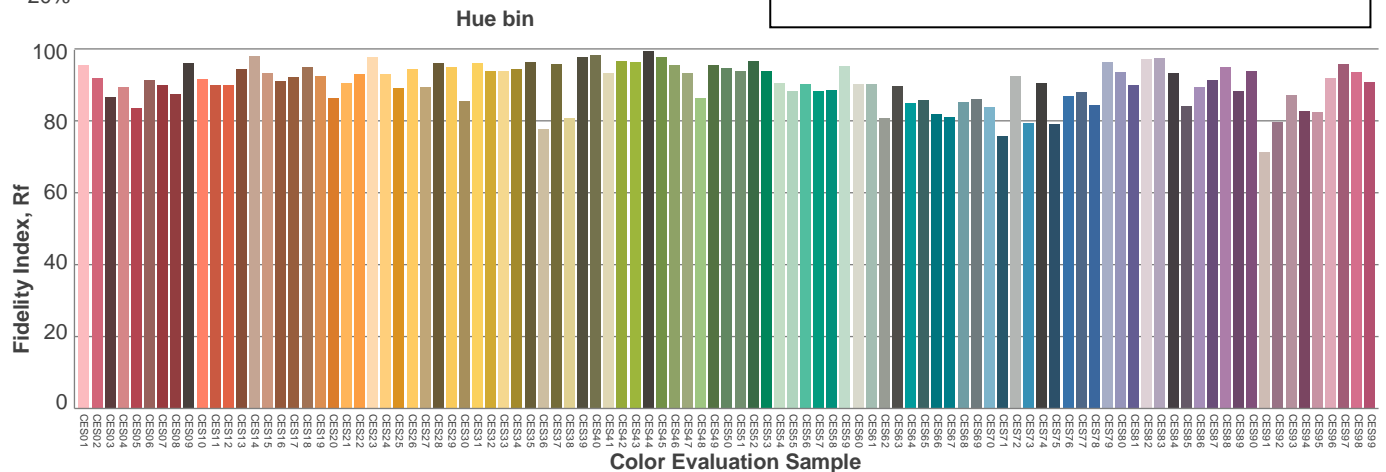
Red: 25.1%, Power=5.8mW

Blue: 18.3%, Power=10.0mW

Green: 30.1%, Power=12.2mW

UVA: 0.3%, Power=0.0mW

Dominant Wavelength: 578nm

1st Peak Wavelength: 454nm2nd Peak Wavelength: 565nm

Glare Evaluation According to UGR

p Ceiling		70	70	50	50	30	70	70	50	50	30
p Walls		50	30	50	30	30	50	30	50	30	30
p Floor		20	20	20	20	20	20	20	20	20	20
Room size X Y		Viewing direction at right angles to lamp axis					Viewing direction parallel to lamp axis				
2H	2H	17.5	18.1	17.6	18.3	18.5	17.5	18.1	17.6	18.3	18.5
	3H	17.4	18.1	17.8	18.3	18.5	17.4	18.1	17.8	18.3	18.5
	4H	17.5	18.2	17.8	18.4	18.6	17.5	18.2	17.8	18.4	18.6
	6H	17.6	18.2	17.9	18.5	18.8	17.6	18.2	17.9	18.5	18.8
	8H	17.7	18.2	18.0	18.6	18.9	17.7	18.2	18.0	18.6	18.9
	12H	17.8	18.3	18.1	18.7	19.1	17.8	18.3	18.1	18.7	19.1
4H	2H	17.3	18.0	17.6	18.2	18.4	17.3	18.0	17.6	18.2	18.4
	3H	17.4	18.0	17.8	18.3	18.7	17.4	18.0	17.8	18.3	18.7
	4H	17.5	18.0	17.9	18.4	18.9	17.5	18.0	17.9	18.4	18.9
	6H	17.6	18.2	18.1	18.5	18.9	17.6	18.2	18.1	18.5	18.9
	8H	17.8	18.3	18.3	18.6	19.0	17.8	18.3	18.3	18.6	19.0
	12H	17.9	18.3	18.4	18.7	19.2	17.9	18.3	18.4	18.7	19.2
8H	4H	17.4	17.9	17.9	18.3	18.6	17.4	17.9	17.9	18.3	18.6
	6H	17.7	18.1	18.2	18.5	19.1	17.7	18.1	18.2	18.5	19.1
	8H	18.0	18.3	18.5	18.8	19.4	18.0	18.3	18.5	18.8	19.4
	12H	18.3	18.6	18.9	19.1	19.7	18.3	18.6	18.9	19.1	19.7
12H	4H	17.4	17.8	17.9	18.2	18.7	17.4	17.8	17.9	18.2	18.7
	6H	17.8	18.1	18.3	18.6	19.2	17.8	18.1	18.3	18.6	19.2
	8H	18.1	18.3	18.7	18.8	19.4	18.1	18.3	18.7	18.8	19.4
Variation of the observer position for the luminaire distance S											
S = 1.0H		2.2 / -2.0					2.2 / -2.0				
S = 1.5H		4.2 / -2.5					4.2 / -2.5				
S = 2.0H		5.9 / -2.8					5.9 / -2.8				
Standard table		n/a					n/a				
Correction summand		n/a					n/a				
Corrected glare indices referring to 858 lm total luminous flux											