

Light efficiency:



Light quality:



Color temperature:



Output: 820 lm

Peak: 282 cd

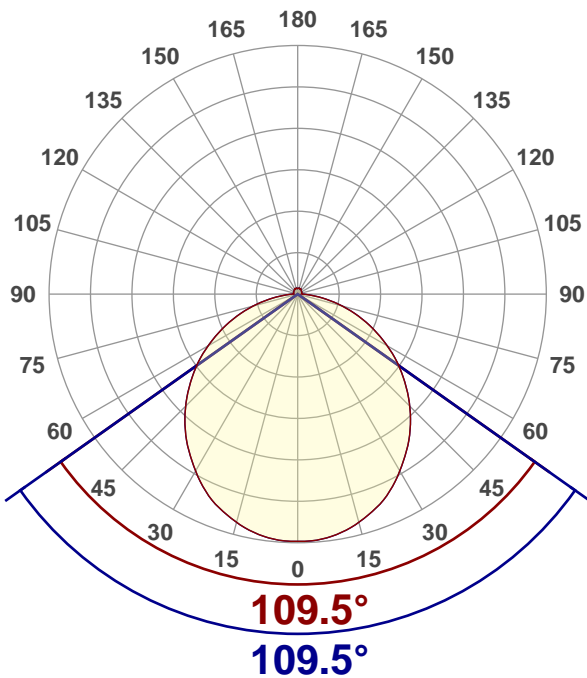
Power: 11.7 W

Voltage: 120 V

Current: 0.103 A

PF: 0.94

THD: 34.73 %



Product name:

SLMPRO4-30K-WH

Driver Used:

SLM-DVR-12W

Test Date:

7/31/2018

Beam Angle:

109.5°

Field Angle:

162.3°

Cut Off Angle:

343.2°

Beam details

**measured at center of beam*

Mounting Height (feet)\(meter)	Lux*	Footcandles*	Beam width (feet) / (meter)
4 ft / 1.2 m	190 lx	18 fcd	11.3 ft / 3.4 m
8 ft / 2.4 m	47 lx	4 fcd	22.6 ft / 6.9 m
12 ft / 3.7 m	21 lx	2 fcd	33.9 ft / 10.3 m
16 ft / 4.9m	12 lx	1 fcd	45.2 ft / 13.8 m
20 ft / 6.1m	8 lx	1 fcd	56.6 ft / 17.2 m

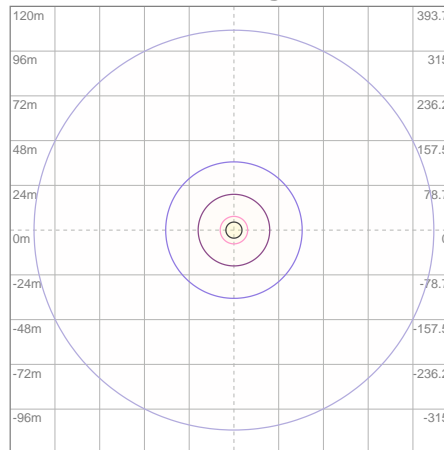
Beam center

Light planning Photometric Testing Report

Zonal Lumen Summary

Zone	Lumen	%Luminaire
0-30	217	26.46%
0-40	353	43.05%
0-60	617	75.24%
60-90	169	20.61%
70-100	79.9	9.74%
90-120	15.6	1.90%
0-90	786	95.85%
90-180	34.4	4.20%
0-180	820	100.00%

ISO lux diagram



Lux at center:		30 lx
— 3%	0.90 lx	
— 5%	1.50 lx	
— 10%	3.00 lx	
— 30%	9.00 lx	
— 50%	15.00 lx	

Conditions:
 Number of planes: 16
 Lux distribution on a surface when lamp is mounted at 3.05 meters from the surface.

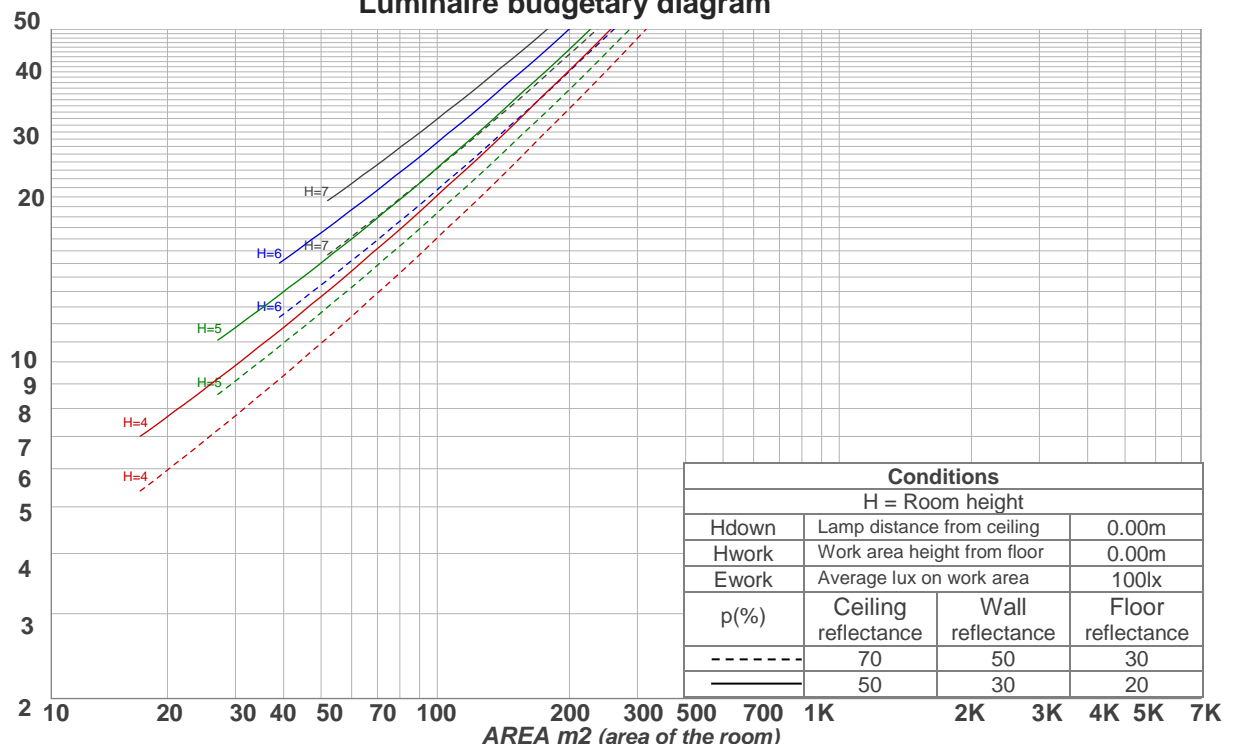
Mounting height: 3.05 meters (10 feet)

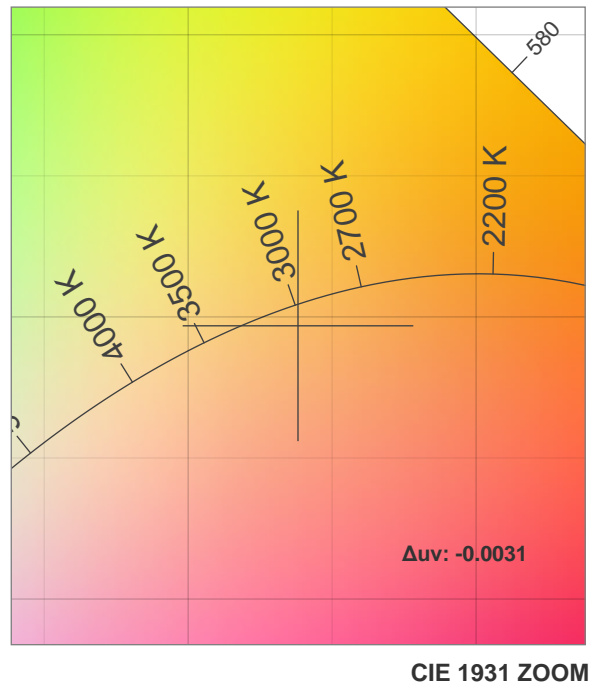
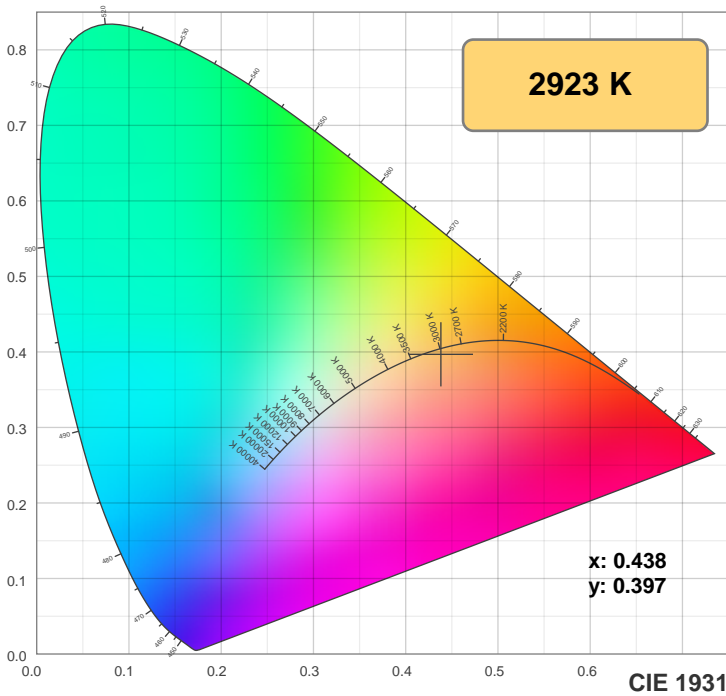
Coefficients of Utilization

Ceiling reflectance	80				70				50			30			10			0
Wall reflectance	70	50	30	10	70	50	30	10	50	30	10	50	30	10	50	30	10	0
Floor reflectance	20	20	20	20	20	20	20	20	20	20	20	20	20	20	20	20	20	0
RCR	(RCR: Room Cavity Ratio)																	
	Room Values are expressed as percentage of Lumens delivered to the task surface																	
0	118	118	118	118	115	115	115	115	109	109	109	103	103	103	98	98	98	96
1	108	103	98	95	104	100	96	93	95	92	89	90	88	85	86	84	82	80
2	98	90	83	77	95	87	81	76	83	78	73	79	75	71	76	72	69	66
3	89	79	70	64	86	77	69	63	73	67	61	70	64	60	67	62	58	56
4	82	70	61	54	79	68	60	54	65	58	52	62	56	51	60	54	50	48
5	75	62	53	47	73	61	52	46	58	51	45	56	49	44	54	48	44	41
6	69	56	47	41	67	55	46	40	53	45	40	51	44	39	49	43	38	36
7	64	51	42	36	62	50	41	36	48	40	35	46	39	35	44	38	34	32
8	60	46	38	32	58	45	37	32	44	37	31	42	36	31	41	35	30	29
9	56	43	34	29	54	42	34	29	40	33	28	39	32	28	38	32	28	26
10	52	39	31	26	51	39	31	26	37	30	26	36	30	25	35	29	25	23

LAMPS (number of lamps)

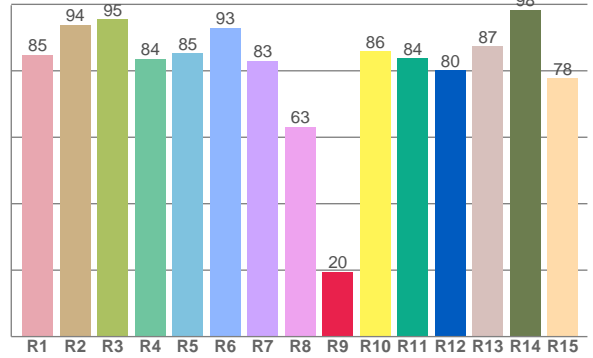
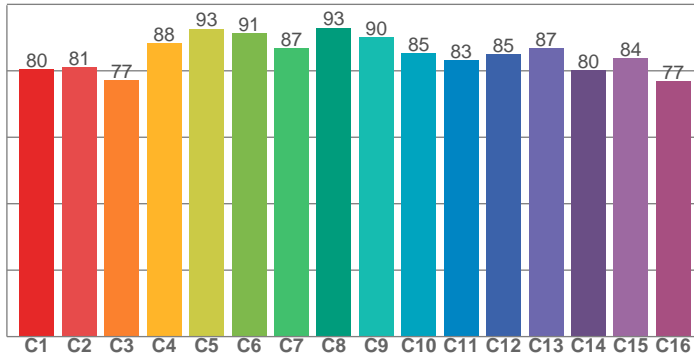
Luminaire budgetary diagram





TM30: 85.0

CRI: 85.3 (R1-R8)



CRI R values, only R1-R8 are used to calculate final CRI value

R1	R2	R3	R4	R5	R6	R7	R8	R9	R10	R11	R12	R13	R14	R15
84.9	93.9	95.5	83.6	85.3	93.0	83.0	63.1	19.5	85.8	83.7	80.2	87.3	98.4	77.8

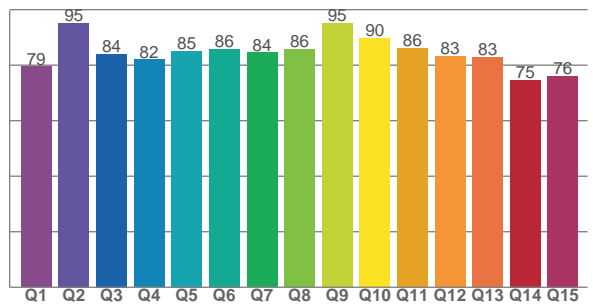
TM30 C values, 16 binned values out of total of 99 C values

C1	C2	C3	C4	C5	C6	C7	C8	C9	C10	C11	C12	C13	C14	C15	C16
80.5	81.1	77.1	88.2	92.6	91.3	86.8	92.9	90.1	85.3	83.2	84.9	86.8	80.1	83.8	76.8

CQS Q values

Q1	Q2	Q3	Q4	Q5	Q6	Q7	Q8	Q9	Q10	Q11	Q12	Q13	Q14	Q15
79.5	95.2	84.1	82.0	85.2	85.9	84.5	85.7	95.3	89.8	86.2	83.3	82.9	74.7	76.0

CQS: 83.6



Color parameters

Color temperature	Color rendering index	Red component	Color fidelity	Color gamut	Color quality scale	Color coordinate cie 1931	Color coordinate cie 1931	Color coordinate	Color coordinate	Color deviation from black body
CCT	CRI	CRI R9	TM30 Rf	TM30 Rg	CQS	x	y	u	v	Δuv
2923 K	85.3	19.5	85.0	97.6	83.6	0.438	0.397	0.255	0.346	-0.0031

UGR Photometric Testing Report

Glare Evaluation According to UGR

p Ceiling	70	70	50	50	30	70	70	50	50	30	
p Walls	50	30	50	30	30	50	30	50	30	30	
p Floor	20	20	20	20	20	20	20	20	20	20	
Room size X Y	Viewing direction at right angles to lamp axis					Viewing direction parallel to lamp axis					
2H	2H	25.0	26.3	25.3	26.6	26.9	25.0	26.3	25.3	26.6	26.9
	3H	26.5	27.7	26.9	28.0	28.4	26.5	27.7	26.9	28.0	28.4
	4H	27.2	28.3	27.6	28.6	29.0	27.2	28.3	27.6	28.6	29.0
	6H	27.7	28.7	28.1	29.1	29.5	27.7	28.7	28.1	29.1	29.5
	8H	27.9	28.8	28.3	29.2	29.6	27.9	28.8	28.3	29.2	29.6
	12H	28.0	28.9	28.4	29.3	29.7	28.0	28.9	28.4	29.3	29.7
4H	2H	25.7	26.7	26.1	27.1	27.5	25.7	26.7	26.1	27.1	27.5
	3H	27.4	28.3	27.8	28.7	29.2	27.4	28.3	27.8	28.7	29.2
	4H	28.2	29.0	28.6	29.4	29.9	28.2	29.0	28.6	29.4	29.9
	6H	28.8	29.5	29.3	30.0	30.5	28.8	29.5	29.3	30.0	30.5
	8H	29.0	29.7	29.5	30.2	30.7	29.0	29.7	29.5	30.2	30.7
	12H	29.2	29.8	29.7	30.3	30.8	29.2	29.8	29.7	30.3	30.8
8H	4H	28.5	29.1	29.0	29.6	30.1	28.5	29.1	29.0	29.6	30.1
	6H	29.3	29.8	29.8	30.3	30.8	29.3	29.8	29.8	30.3	30.8
	8H	29.6	30.1	30.1	30.6	31.1	29.6	30.1	30.1	30.6	31.1
	12H	29.9	30.3	30.4	30.8	31.4	29.9	30.3	30.4	30.8	31.4
12H	4H	28.5	29.1	29.0	29.6	30.1	28.5	29.1	29.0	29.6	30.1
	6H	29.3	29.8	29.9	30.3	30.9	29.3	29.8	29.9	30.3	30.9
	8H	29.7	30.1	30.3	30.7	31.2	29.7	30.1	30.3	30.7	31.2
Variation of the observer position for the luminaire distance S											
S = 1.0H	+0.1 / -0.1					+0.1 / -0.1					
S = 1.5H	+0.2 / -0.3					+0.2 / -0.3					
S = 2.0H	+0.4 / -0.6					+0.4 / -0.6					
Standard table	BK06					BK06					
Correction summand	12.5					12.5					
Corrected glare indices referring to 820 lm total luminous flux											

Due to our continued efforts to improve our products, product specifications are subject to change without notice. Please refer to our website for the latest test results.