

Light efficiency:

64 Lumen/Watt

Light quality:

CRI: 82.4

Color temperature:

2925 K

Output: 1236 lm

Peak: 1762 cd

Power: 19.4 W

PF: 0.99



Beam angle

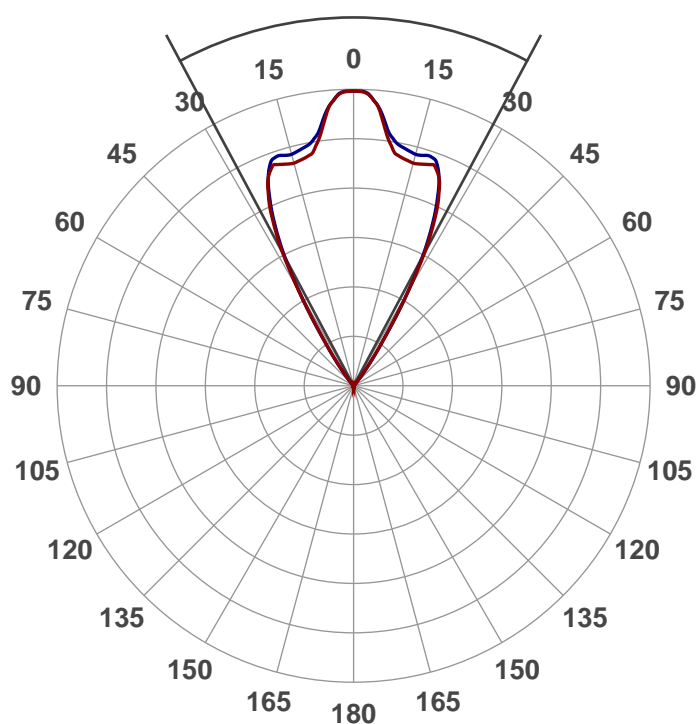
56.2°

Product name:

608-3-XTM19-20LM-30K-83-SA60-CRO

Date and time:

9/27/2016 9:43:38 AM

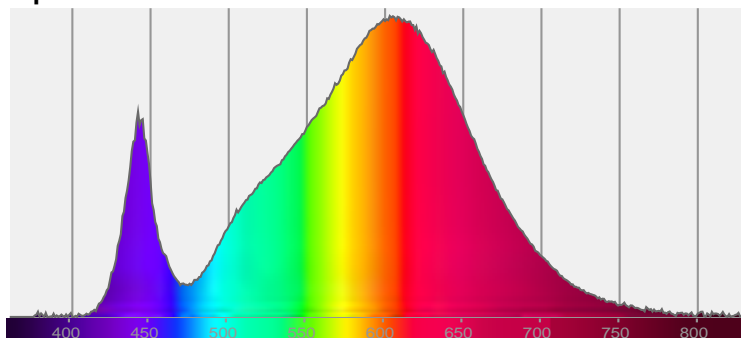


CIE 1931

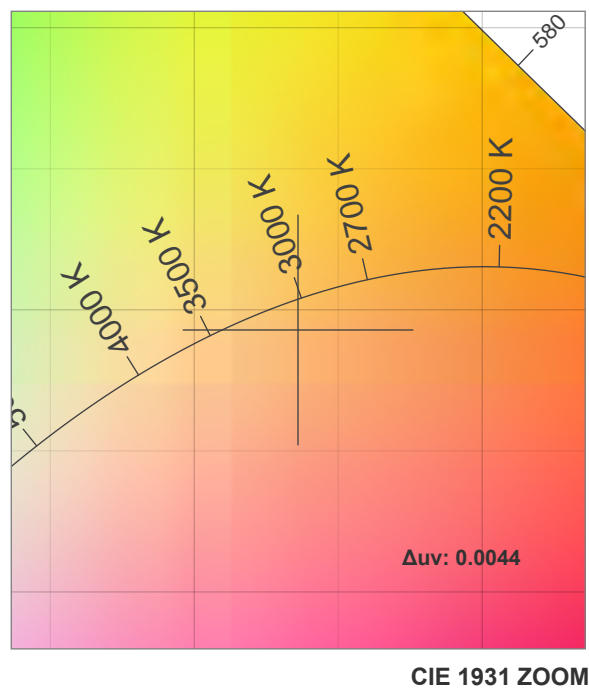
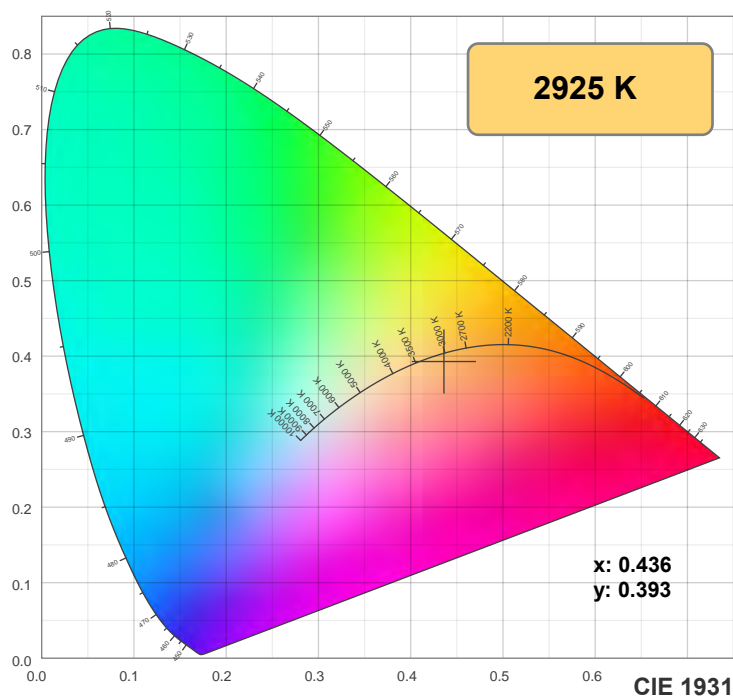
x: 0.436

y: 0.393

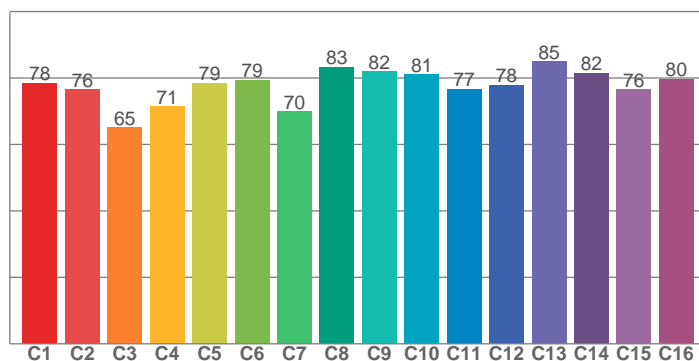
Spectra



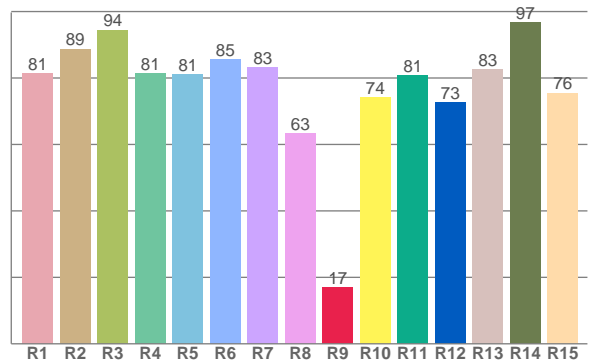
Color details



TM30: 77.5



CRI: 82.4 (R1-R8)



CRI R values, only R1-R8 are used to calculate final CRI value

R1	R2	R3	R4	R5	R6	R7	R8	R9	R10	R11	R12	R13	R14	R15
81.3	88.8	94.5	81.3	81.0	85.5	83.3	63.3	17.0	74.1	80.8	72.7	82.6	96.6	75.5

TM30 C values, 16 binned values out of total of 99 C values

C1	C2	C3	C4	C5	C6	C7	C8	C9	C10	C11	C12	C13	C14	C15	C16
78.5	76.5	65.2	71.5	78.5	79.4	69.9	83.4	82.0	81.1	76.6	77.9	85.0	81.6	76.5	79.7

Color parameters

Color temperature	Color rendering index	Red component	Color fidelity	Color gamut	Color coordinate cie 1931	Color coordinate cie 1931	Color coordinate	Color coordinate	Color deviation from black body
CCT	CRI	CRI R9	TM30 Rf	TM30 Rg	x	y	u	v	Δuv
2925 K	82.4	17.0	77.5	101.7	0.436	0.393	0.255	0.344	0.0044

TM30 details

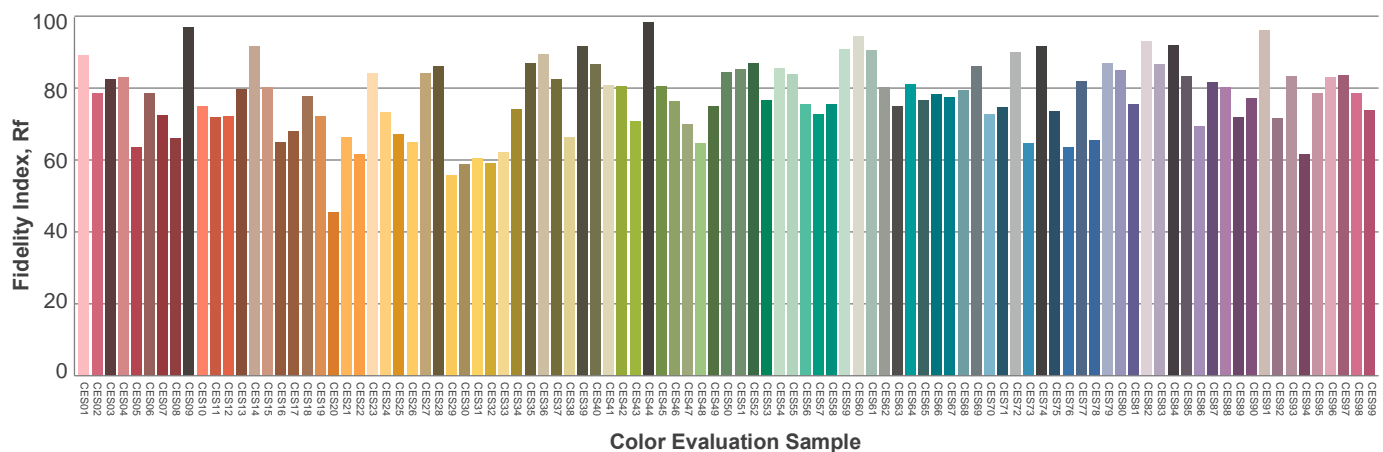
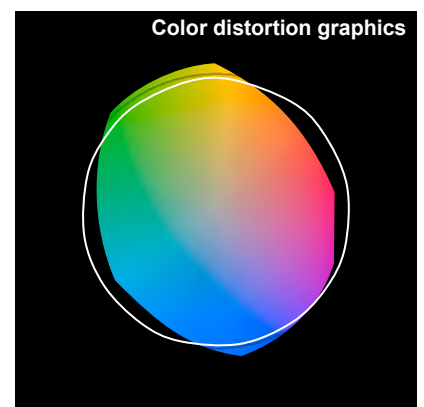
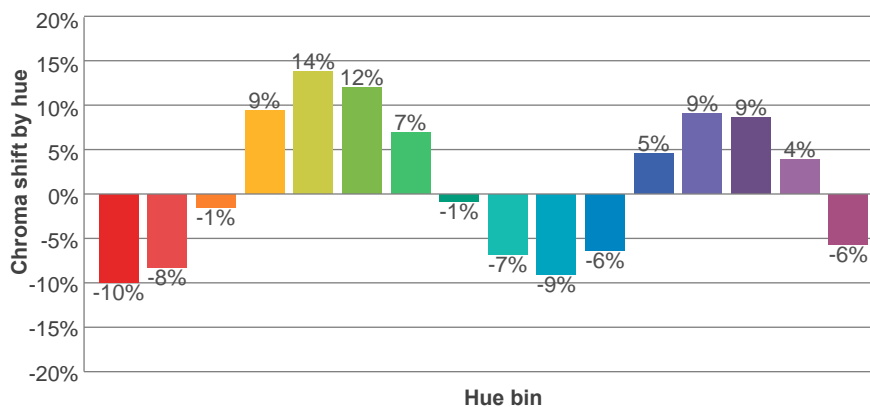
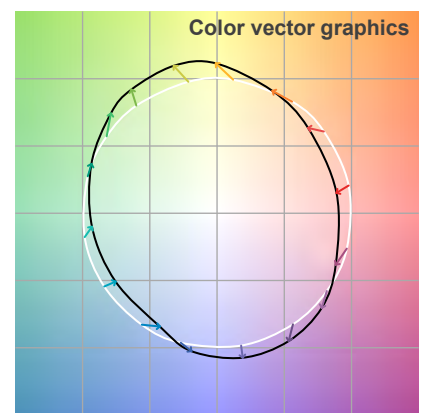
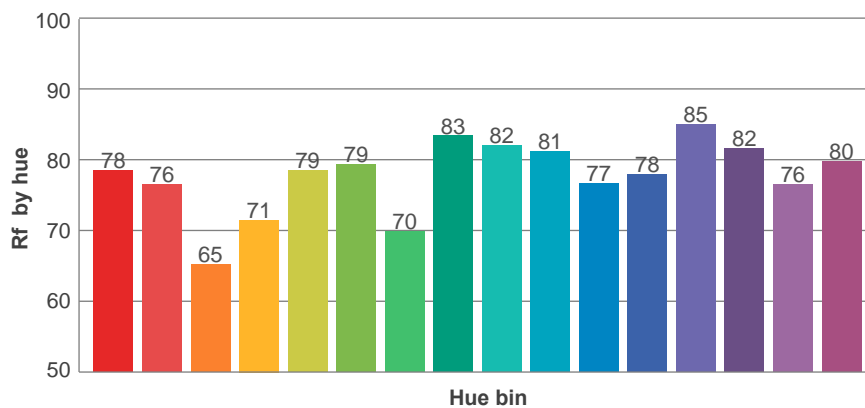
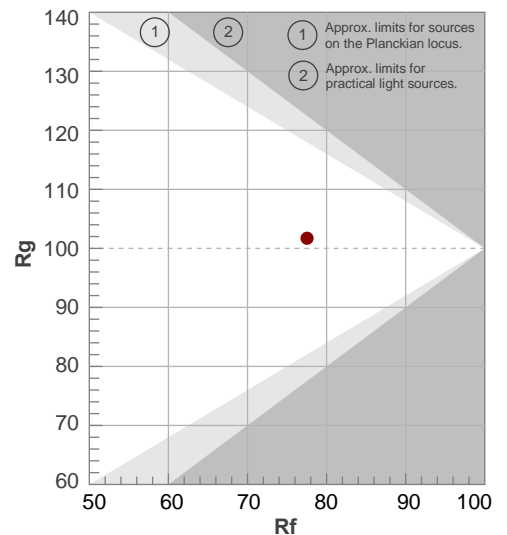
Rf 77.5

Fidelity index Rf

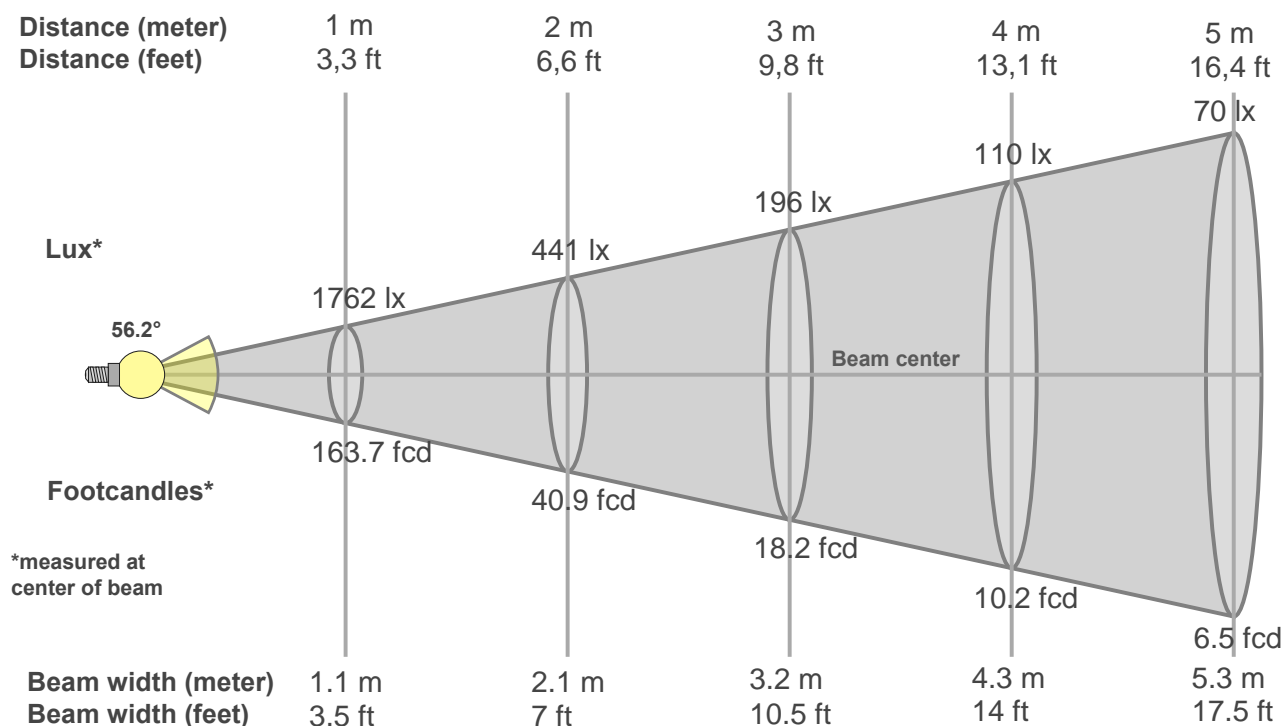
Rg 101.7

Gamut index Rg

Hue Bin	R _f	Graphic shifts (%)	
		Chroma	Hue
1	78	-10%	-4%
2	76	-8%	9%
3	65	-1%	17%
4	71	9%	15%
5	79	14%	8%
6	79	12%	-4%
7	70	7%	-16%
8	83	-1%	-10%
9	82	-7%	-7%
10	81	-9%	2%
11	77	-6%	12%
12	78	5%	9%
13	85	9%	-1%
14	82	9%	-10%
15	76	4%	-12%
16	80	-6%	-13%



Beam details



Beam intensities from 1-20m

1m	2m	3m	4m	5m	6m	7m	8m	9m	10m	11m	12m	13m	14m	15m	16m	17m	18m	19m	20m
3.3ft	6.6ft	9.8ft	13.1ft	16.4ft	19.7ft	23ft	26.2ft	29.5ft	32.8ft	36.1ft	39.4ft	42.7ft	45.9ft	49.2ft	52.5ft	55.8ft	59.1ft	62.3ft	65.6ft
1762lx	441lx	196lx	110lx	70lx	49lx	36lx	28lx	22lx	18lx	15lx	12lx	10lx	9lx	8lx	7lx	6lx	5lx	5lx	4lx
163.7fcd	40.9fcd	18.2fcd	10.2fcd	6.5fcd	4.5fcd	3.3fcd	2.6fcd	2fcd	1.6fcd	1.4fcd	1.1fcd	1fcd	0.8fcd	0.7fcd	0.6fcd	0.6fcd	0.5fcd	0.5fcd	0.4fcd

Intensities in 0° c-plane

0°	2°	4°	6°	8°	10°	12°	14°	16°	18°	20°	22°	24°	26°	28°	30°	32°	34°	36°	38°
1762	1756	1711	1612	1489	1413	1393	1382	1380	1391	1404	1354	1252	1105	911	658	426	258	145	67
100%	100%	97%	91%	84%	80%	79%	78%	78%	79%	80%	77%	71%	63%	52%	37%	24%	15%	8%	4%

Intensities in 90° c-plane

0°	2°	4°	6°	8°	10°	12°	14°	16°	18°	20°	22°	24°	26°	28°	30°	32°	34°	36°	38°
1762	1759	1711	1632	1525	1474	1452	1437	1433	1447	1433	1360	1235	1076	885	651	426	262	154	74
100%	100%	97%	93%	87%	84%	82%	82%	81%	82%	81%	77%	70%	61%	50%	37%	24%	15%	9%	4%

Intensities in 180° c-plane

0°	2°	4°	6°	8°	10°	12°	14°	16°	18°	20°	22°	24°	26°	28°	30°	32°	34°	36°	38°
1762	1756	1711	1612	1489	1413	1393	1382	1380	1391	1404	1354	1252	1105	911	658	426	258	145	67
100%	100%	97%	91%	84%	80%	79%	78%	78%	79%	80%	77%	71%	63%	52%	37%	24%	15%	8%	4%

Intensities in 270° c-plane

0°	2°	4°	6°	8°	10°	12°	14°	16°	18°	20°	22°	24°	26°	28°	30°	32°	34°	36°	38°
1762	1759	1711	1632	1525	1474	1452	1437	1433	1447	1433	1360	1235	1076	885	651	426	262	154	74
100%	100%	97%	93%	87%	84%	82%	82%	81%	82%	81%	77%	70%	61%	50%	37%	24%	15%	9%	4%

Beam angle 50%	Field angle 10%	Cutoff angle 2,5%	Intensity ratio in 120° cone	Intensity ratio in 90° cone
56.2°	70.9°	78.9°	99.0%	98.4%