

Light efficiency:

70 Lumen/Watt

Light quality:

CRI: 80.6

Color temperature:

2944 K

Output: 2903 lm

Peak: 3903 cd

Power: 41.2 W

PF: 0.99



Beam angle

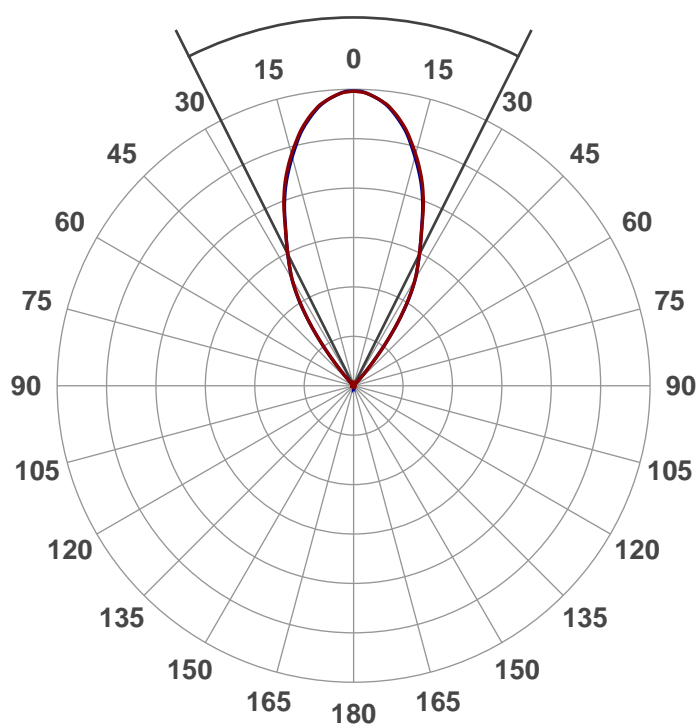
53.1°

Product name:

608-4-XTM19-38LM-30K-83-SA60-CRO

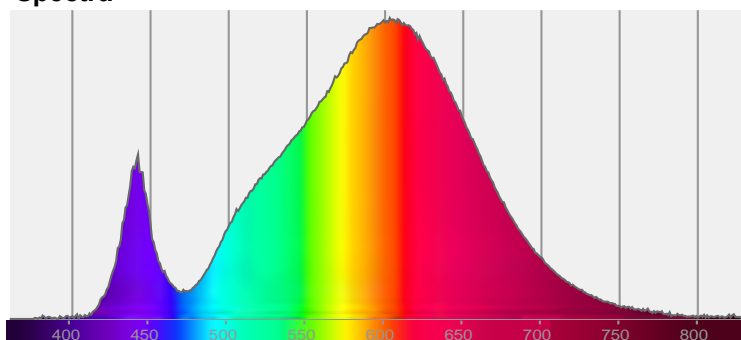
Date and time:

9/28/2016 3:23:51 PM

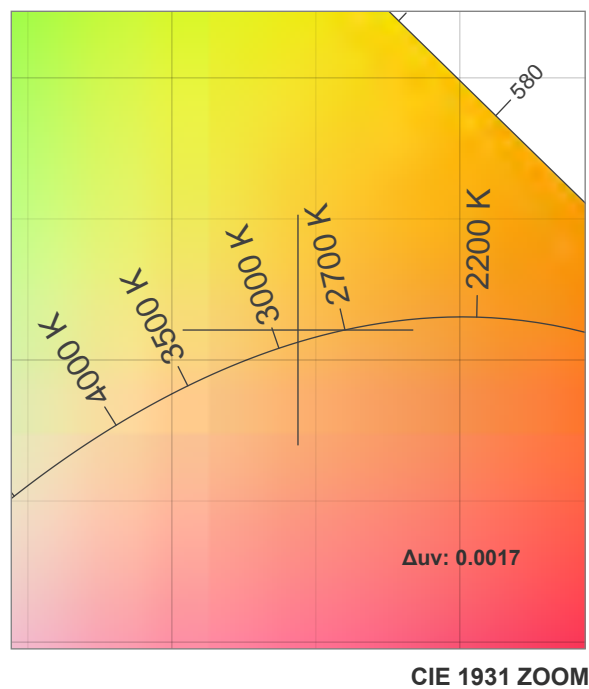
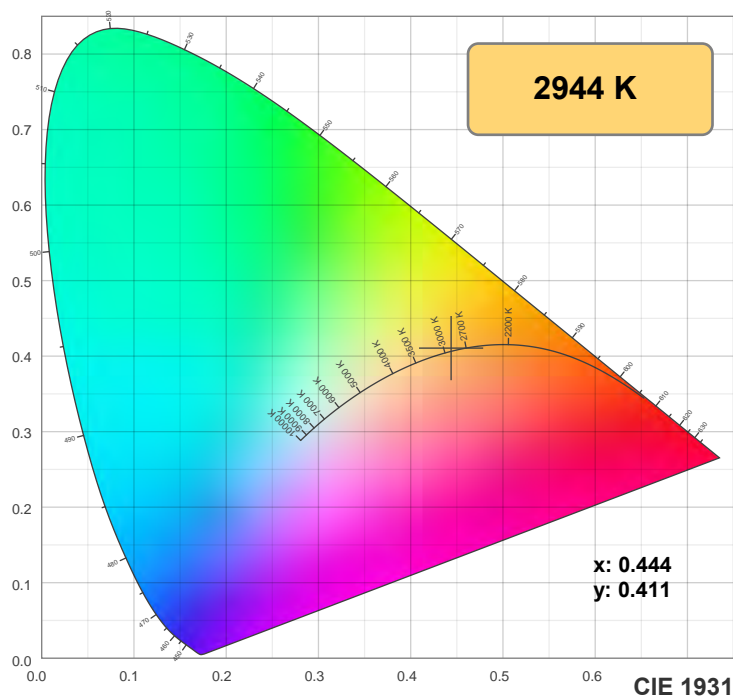


CIE 1931
x: 0.444
y: 0.411

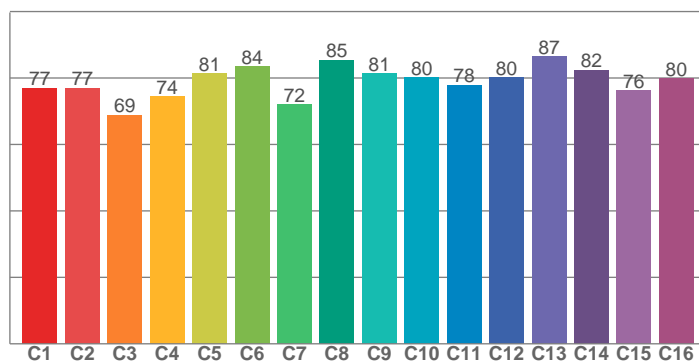
Spectra



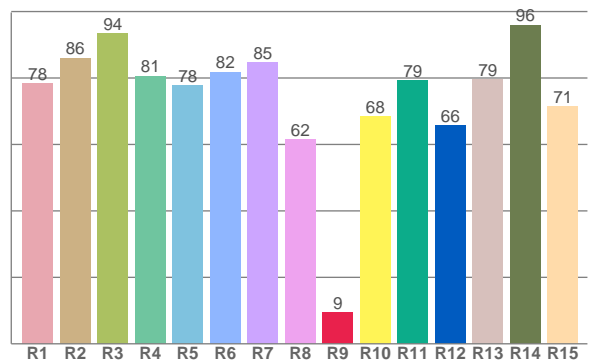
Color details



TM30: 78.7



CRI: 80.6 (R1-R8)



CRI R values, only R1-R8 are used to calculate final CRI value

R1	R2	R3	R4	R5	R6	R7	R8	R9	R10	R11	R12	R13	R14	R15
78.4	86.1	93.5	80.6	77.8	81.9	84.6	61.6	9.4	68.4	79.4	65.7	79.5	96.0	71.4

TM30 C values, 16 binned values out of total of 99 C values

C1	C2	C3	C4	C5	C6	C7	C8	C9	C10	C11	C12	C13	C14	C15	C16
77.0	77.0	68.9	74.4	81.4	83.5	71.9	85.4	81.3	80.2	77.9	80.1	86.5	82.4	76.3	79.8

Color parameters

Color temperature	Color rendering index	Red component	Color fidelity	Color gamut	Color coordinate cie 1931	Color coordinate cie 1931	Color coordinate	Color coordinate	Color deviation from black body
CCT	CRI	CRI R9	TM30 Rf	TM30 Rg	x	y	u	v	Δuv
2944 K	80.6	9.4	78.7	98.9	0.444	0.411	0.252	0.350	0.0017

TM30 details

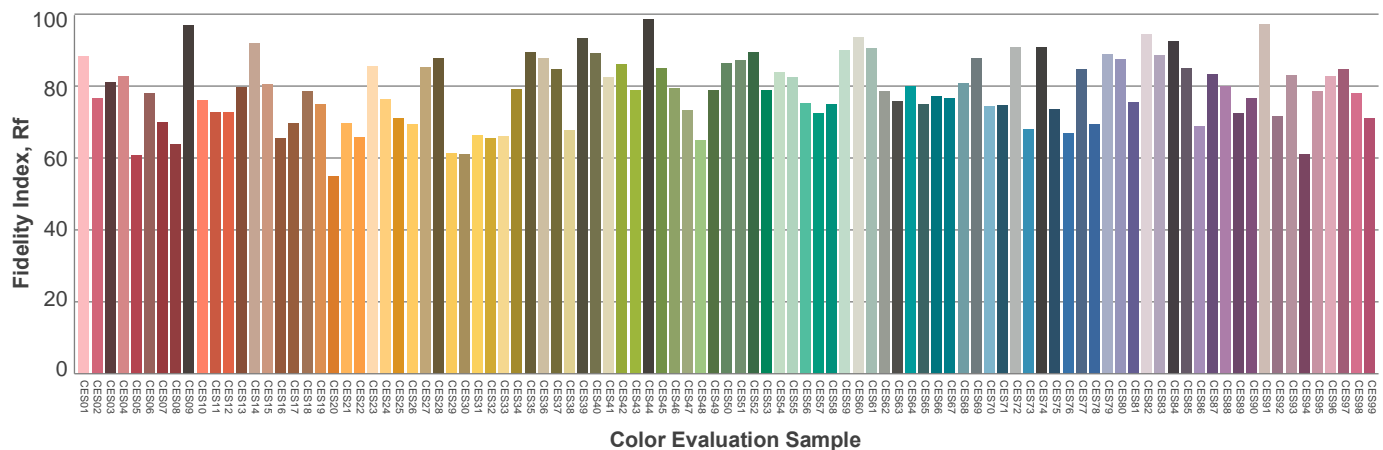
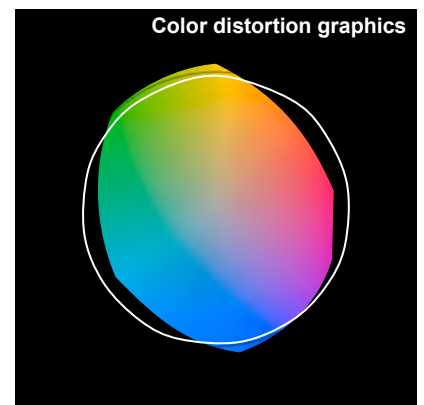
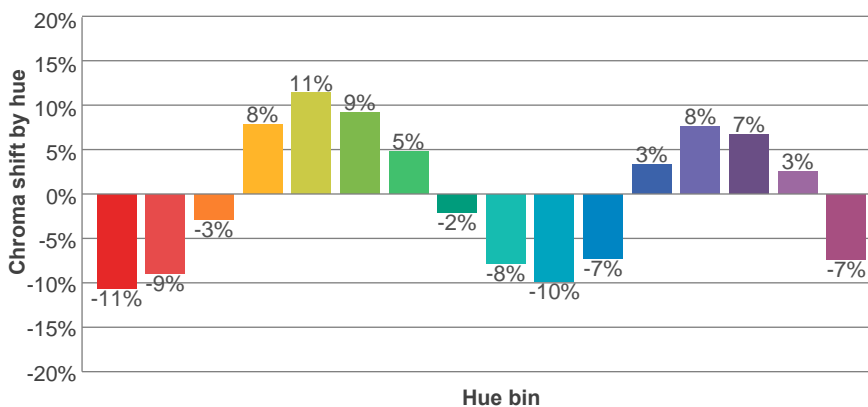
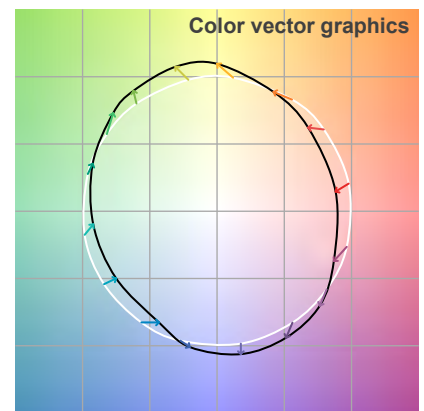
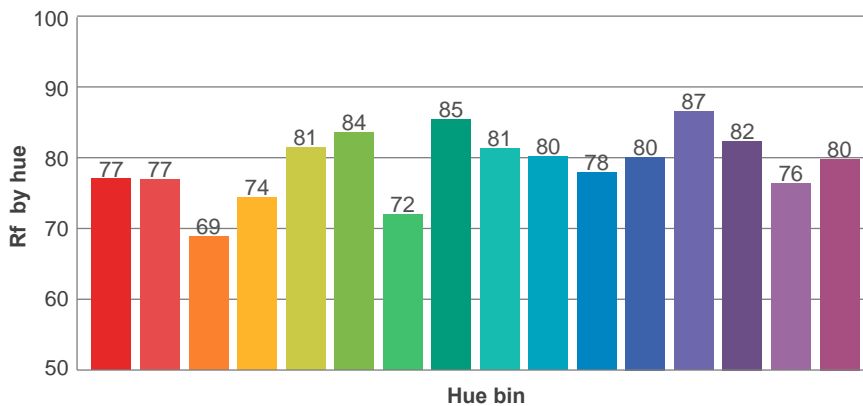
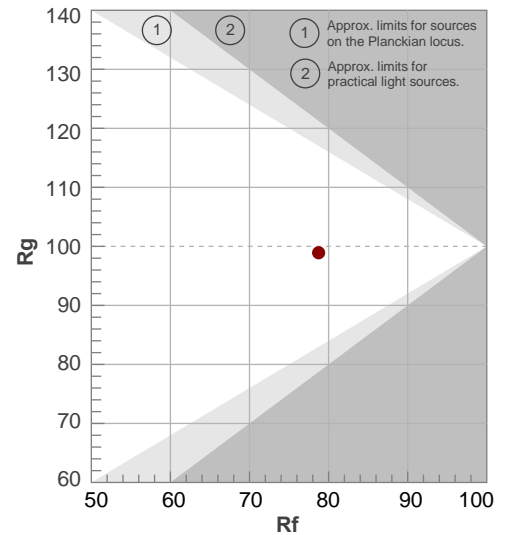
Rf 78.7

Fidelity index Rf

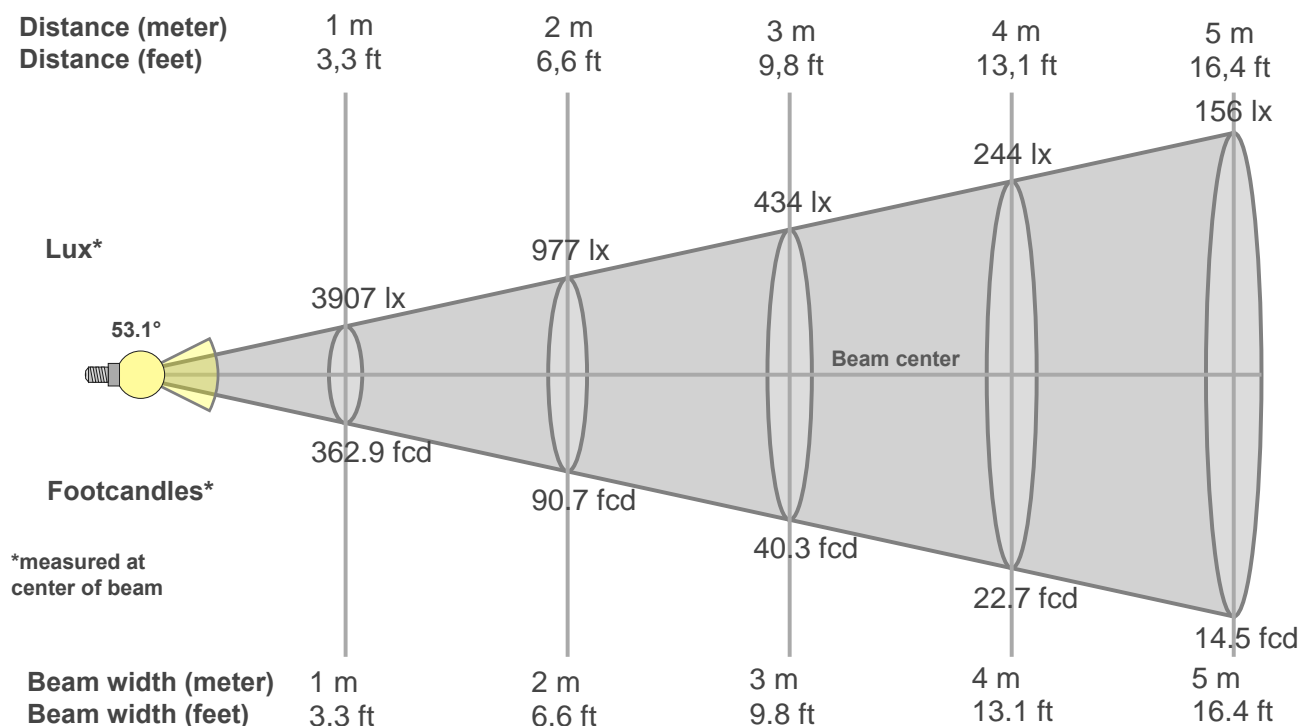
Rg 98.9

Gamut index Rg

Hue Bin	R _f	Graphic shifts (%)	
		Chroma	Hue
1	77	-11%	-4%
2	77	-9%	8%
3	69	-3%	15%
4	74	8%	14%
5	81	11%	8%
6	84	9%	-3%
7	72	5%	-15%
8	85	-2%	-8%
9	81	-8%	-6%
10	80	-10%	1%
11	78	-7%	11%
12	80	3%	8%
13	87	8%	-1%
14	82	7%	-10%
15	76	3%	-13%
16	80	-7%	-12%



Beam details



Beam intensities from 1-20m

1m	2m	3m	4m	5m	6m	7m	8m	9m	10m	11m	12m	13m	14m	15m	16m	17m	18m	19m	20m
3.3ft	6.6ft	9.8ft	13.1ft	16.4ft	19.7ft	23ft	26.2ft	29.5ft	32.8ft	36.1ft	39.4ft	42.7ft	45.9ft	49.2ft	52.5ft	55.8ft	59.1ft	62.3ft	65.6ft
3907lx	977lx	434lx	244lx	156lx	109lx	80lx	61lx	48lx	39lx	32lx	27lx	23lx	20lx	17lx	15lx	14lx	12lx	11lx	10lx
362.9fcd	90.7fcd	40.3fcd	22.7fcd	14.5fcd	10.1fcd	7.4fcd	5.7fcd	4.5fcd	3.6fcd	3fcd	2.5fcd	2.1fcd	1.9fcd	1.6fcd	1.4fcd	1.3fcd	1.1fcd	1fcd	0.9fcd

Intensities in 0° c-plane

0°	2°	4°	6°	8°	10°	12°	14°	16°	18°	20°	22°	24°	26°	28°	30°	32°	34°	36°	38°
3907	3892	3846	3782	3692	3574	3434	3266	3094	2908	2697	2455	2213	2004	1816	1632	1403	1143	861	571
100%	100%	98%	97%	95%	91%	88%	84%	79%	74%	69%	63%	57%	51%	46%	42%	36%	29%	22%	15%

Intensities in 90° c-plane

0°	2°	4°	6°	8°	10°	12°	14°	16°	18°	20°	22°	24°	26°	28°	30°	32°	34°	36°	38°
3907	3889	3837	3770	3671	3547	3405	3227	3049	2868	2665	2434	2202	2003	1815	1636	1415	1154	867	567
100%	100%	98%	97%	94%	91%	87%	83%	78%	73%	68%	62%	56%	51%	46%	42%	36%	30%	22%	15%

Intensities in 180° c-plane

0°	2°	4°	6°	8°	10°	12°	14°	16°	18°	20°	22°	24°	26°	28°	30°	32°	34°	36°	38°
3907	3892	3846	3782	3692	3574	3434	3266	3094	2908	2697	2455	2213	2004	1816	1632	1403	1143	861	571
100%	100%	98%	97%	95%	91%	88%	84%	79%	74%	69%	63%	57%	51%	46%	42%	36%	29%	22%	15%

Intensities in 270° c-plane

0°	2°	4°	6°	8°	10°	12°	14°	16°	18°	20°	22°	24°	26°	28°	30°	32°	34°	36°	38°
3907	3889	3837	3770	3671	3547	3405	3227	3049	2868	2665	2434	2202	2003	1815	1636	1415	1154	867	567
100%	100%	98%	97%	94%	91%	87%	83%	78%	73%	68%	62%	56%	51%	46%	42%	36%	30%	22%	15%

Beam angle 50%	Field angle 10%	Cutoff angle 2,5%	Intensity ratio in 120° cone	Intensity ratio in 90° cone
53.1°	78.6°	84.8°	98.5%	98.2%