

Light efficiency:

68 Lumen/Watt

Light quality:

CRI: 97.9

Color temperature:

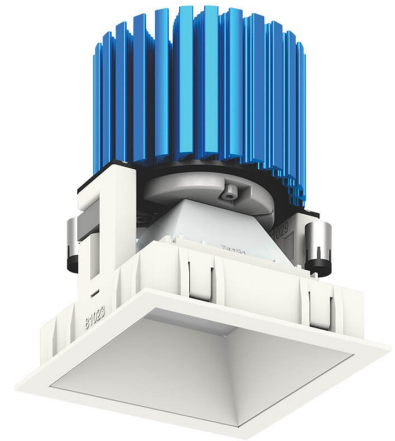
3049 K

Output: 866 lm

Peak: 769 cd

Power: 12.7 W

PF: 0.96

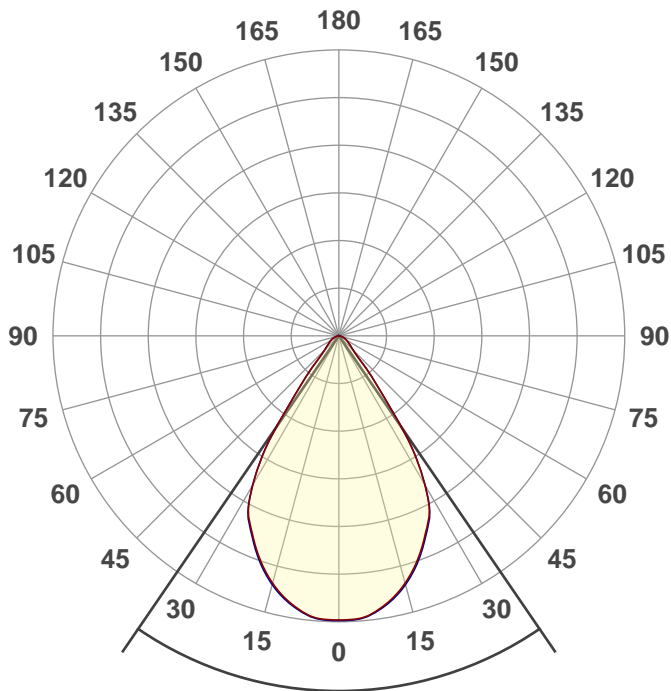


Product name:

NU3-QD-SUN-10LM-30K-97-D70-120-DIM10-RET-WH-WH

Date and time:

12/21/2018 8:59:37 AM



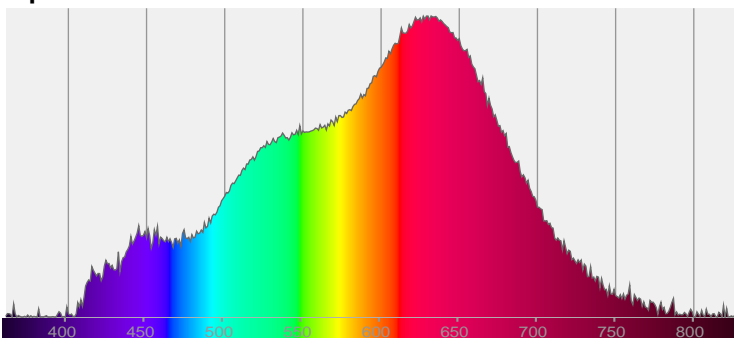
Beam angle

68.8°

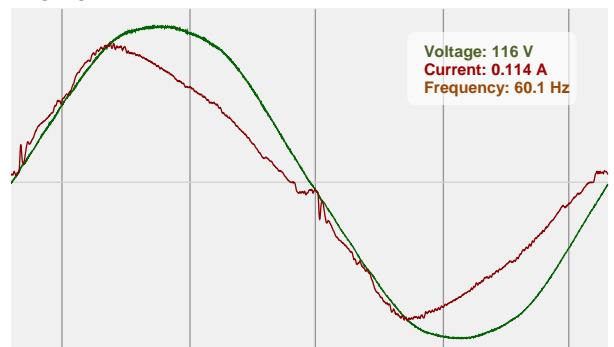


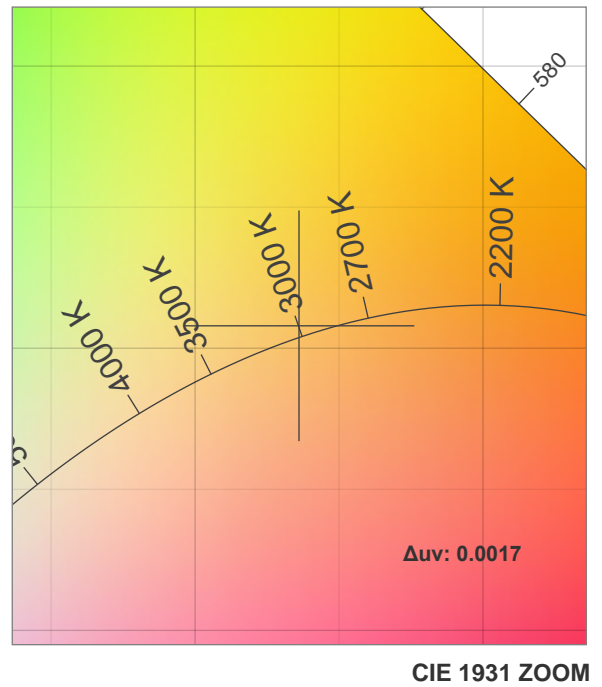
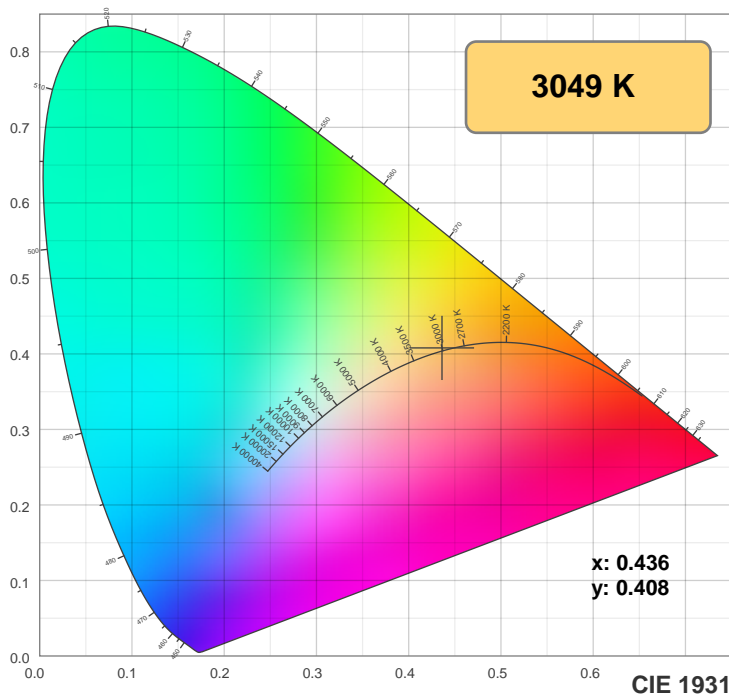
CIE 1931
x: 0.436
y: 0.408

Spectra

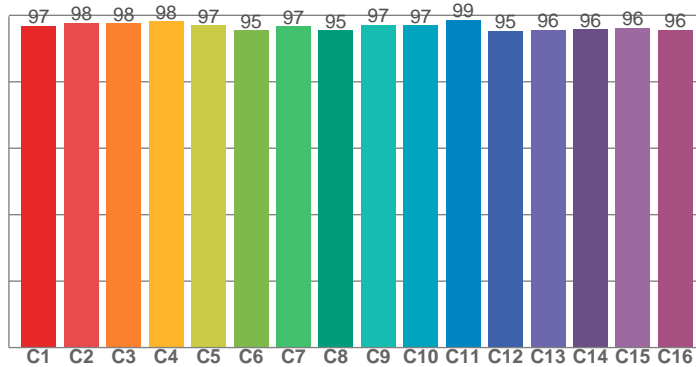


Power

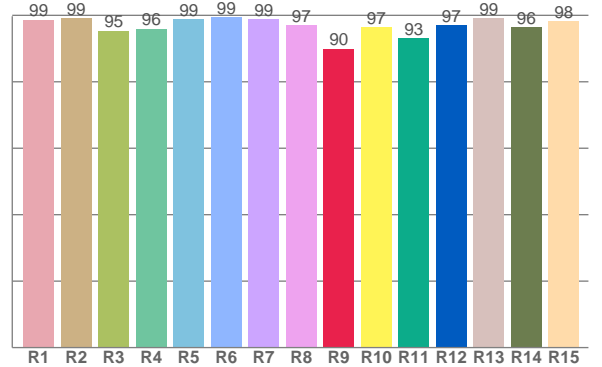




TM30: 96.8



CRI: 97.9 (R1-R8)



CRI R values, only R1-R8 are used to calculate final CRI value

R1	R2	R3	R4	R5	R6	R7	R8	R9	R10	R11	R12	R13	R14	R15
98.7	99.1	95.4	95.9	98.7	99.4	98.9	97.0	90.0	96.5	93.2	97.0	99.1	96.4	98.1

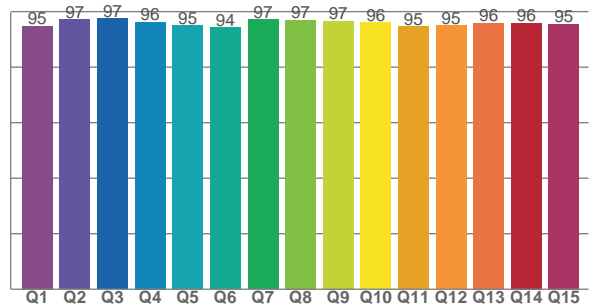
TM30 C values, 16 binned values out of total of 99 C values

C1	C2	C3	C4	C5	C6	C7	C8	C9	C10	C11	C12	C13	C14	C15	C16
96.9	97.7	97.6	98.1	97.0	95.5	96.6	95.4	97.1	97.0	98.6	95.3	95.6	95.7	96.2	95.7

CQS Q values

Q1	Q2	Q3	Q4	Q5	Q6	Q7	Q8	Q9	Q10	Q11	Q12	Q13	Q14	Q15
94.7	97.1	97.5	96.3	94.9	94.3	97.2	97.1	96.7	96.0	94.6	95.0	95.9	96.0	95.5

CQS: 95.7



Color parameters

Color temperature	Color rendering index	Red component	Color fidelity	Color gamut	Color quality scale	Color coordinate cie 1931	Color coordinate cie 1931	Color coordinate	Color coordinate	Color deviation from black body
CCT	CRI	CRI R9	TM30 Rf	TM30 Rg	CQS	x	y	u	v	Δuv
3049 K	97.9	90.0	96.8	101.0	95.7	0.436	0.408	0.248	0.349	0.0017

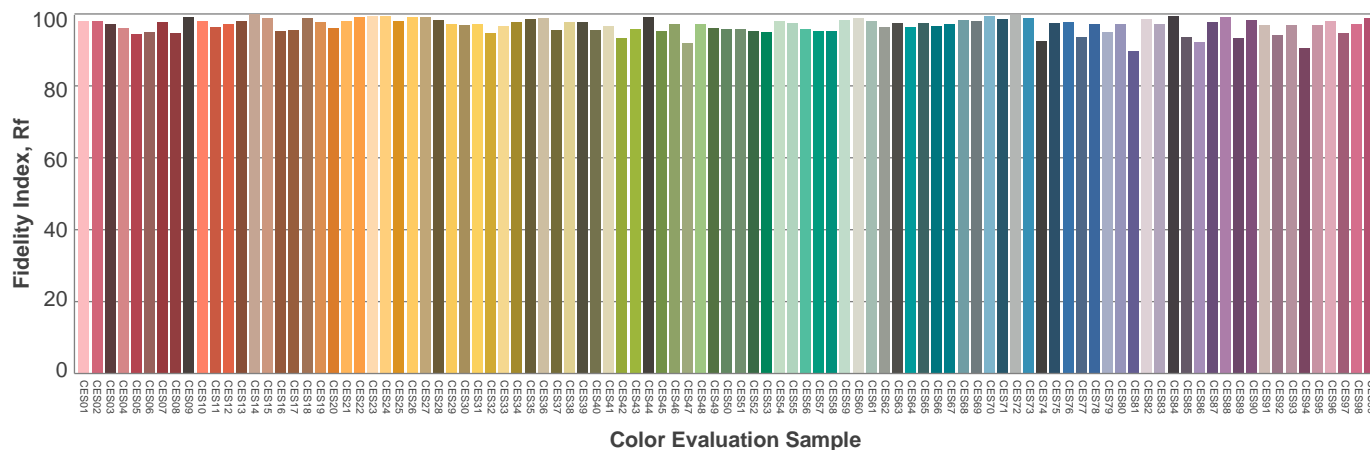
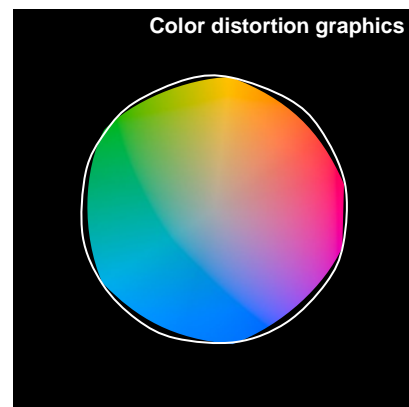
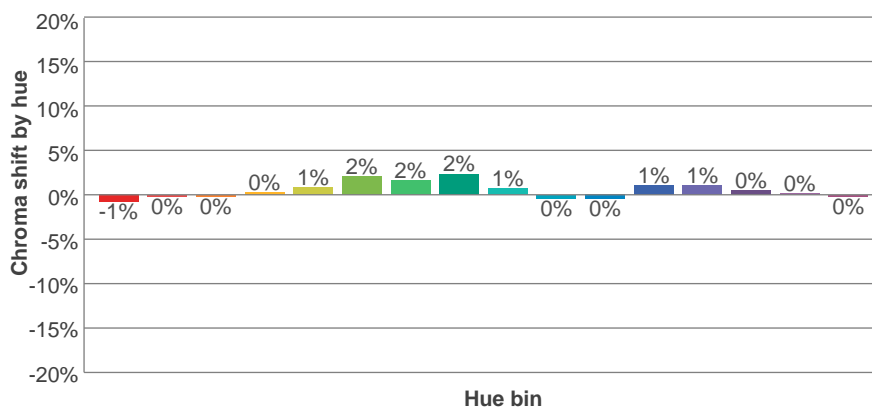
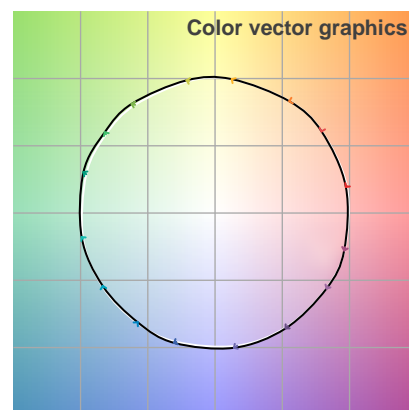
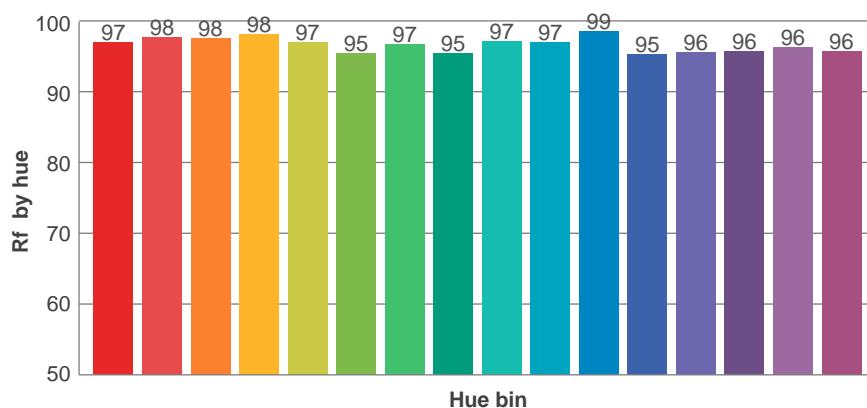
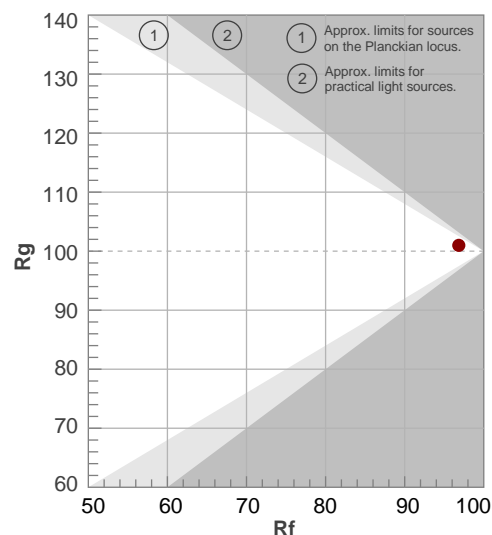
Rf 96.8

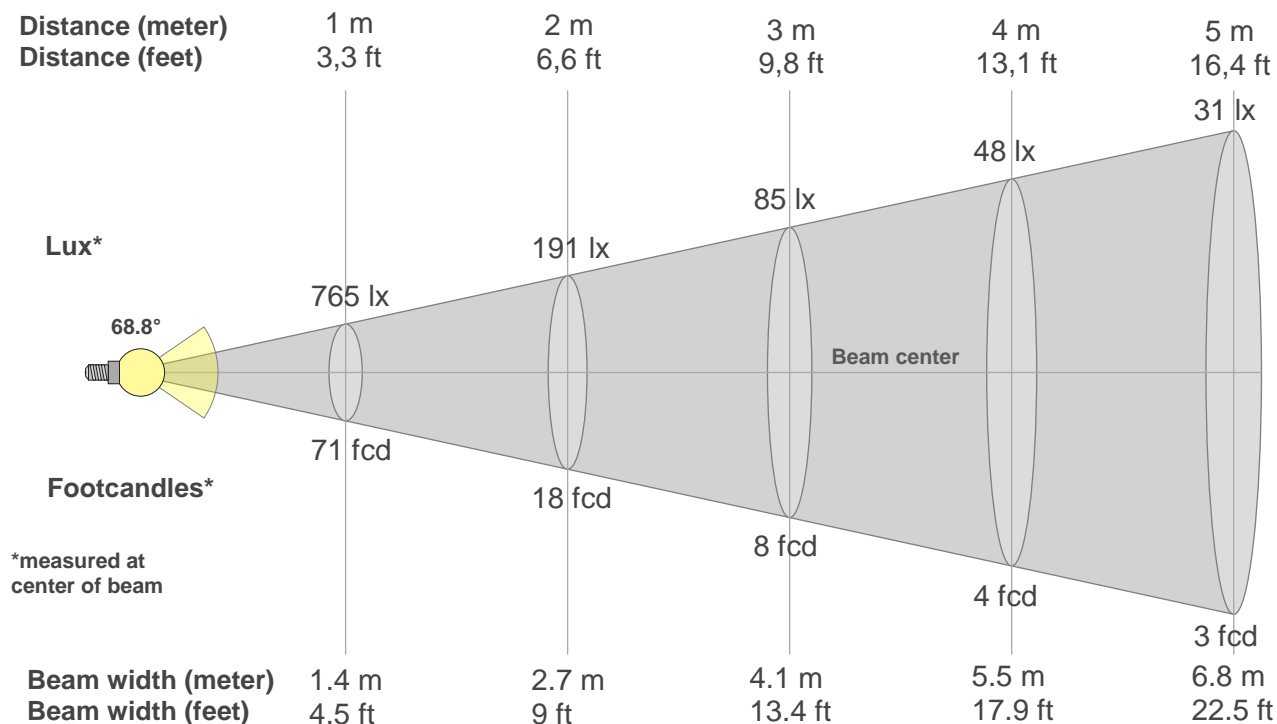
Fidelity index Rf

Rg 101.0

Gamut index Rg

Hue Bin	R _f	Graphic shifts (%)	
		Chroma	Hue
1	97	-1%	-1%
2	98	0%	0%
3	98	0%	0%
4	98	0%	1%
5	97	1%	2%
6	95	2%	2%
7	97	2%	-1%
8	95	2%	-1%
9	97	1%	-2%
10	97	0%	-1%
11	99	0%	0%
12	95	1%	-2%
13	96	1%	-3%
14	96	0%	-2%
15	96	0%	-2%
16	96	0%	-3%





Beam intensities from 1-20m

1m	2m	3m	4m	5m	6m	7m	8m	9m	10m	11m	12m	13m	14m	15m	16m	17m	18m	19m	20m
3.3ft	6.6ft	9.8ft	13.1ft	16.4ft	19.7ft	23ft	26.2ft	29.5ft	32.8ft	36.1ft	39.4ft	42.7ft	45.9ft	49.2ft	52.5ft	55.8ft	59.1ft	62.3ft	65.6ft
765lx	191lx	85lx	48lx	31lx	21lx	16lx	12lx	9lx	8lx	6lx	5lx	5lx	4lx	3lx	3lx	3lx	2lx	2lx	2lx
71.1fcd	17.8fcd	7.9fcd	4.4fcd	2.8fcd	2fcd	1.5fcd	1.1fcd	0.9fcd	0.7fcd	0.6fcd	0.5fcd	0.4fcd	0.4fcd	0.3fcd	0.3fcd	0.2fcd	0.2fcd	0.2fcd	0.2fcd

Intensities in 0° c-plane

0°	2°	4°	6°	8°	10°	12°	14°	16°	18°	20°	22°	24°	26°	28°	30°	32°	34°	36°	38°
765	764	763	754	745	732	716	699	677	655	630	603	575	545	515	457	395	325	242	160
100%	100%	100%	99%	97%	96%	94%	91%	89%	86%	82%	79%	75%	71%	67%	60%	52%	42%	32%	21%

Intensities in 90° c-plane

0°	2°	4°	6°	8°	10°	12°	14°	16°	18°	20°	22°	24°	26°	28°	30°	32°	34°	36°	38°
765	766	765	756	748	735	720	703	682	660	634	607	579	548	518	458	396	323	240	158
100%	100%	100%	99%	98%	96%	94%	92%	89%	86%	83%	79%	76%	72%	68%	60%	52%	42%	31%	21%

Intensities in 180° c-plane

0°	2°	4°	6°	8°	10°	12°	14°	16°	18°	20°	22°	24°	26°	28°	30°	32°	34°	36°	38°
765	764	763	754	745	732	716	699	677	655	630	603	575	545	515	457	395	325	242	160
100%	100%	100%	99%	97%	96%	94%	91%	89%	86%	82%	79%	75%	71%	67%	60%	52%	42%	32%	21%

Intensities in 270° c-plane

0°	2°	4°	6°	8°	10°	12°	14°	16°	18°	20°	22°	24°	26°	28°	30°	32°	34°	36°	38°
765	766	765	756	748	735	720	703	682	660	634	607	579	548	518	458	396	323	240	158
100%	100%	100%	99%	98%	96%	94%	92%	89%	86%	83%	79%	76%	72%	68%	60%	52%	42%	31%	21%

Beam angle 50%	Field angle 10%	Cutoff angle 2,5%	Intensity ratio in 120° cone	Intensity ratio in 90° cone
68.8°	89.2°	129.2°	96.3%	90.3%