

Light efficiency:

89 Lumen/Watt

Light quality:

CRI: 80.2

Color temperature:

2923 K

Output: 2233 lm

Peak: 2596 cd

Power: 25.1 W

PF: 1.0



Beam angle

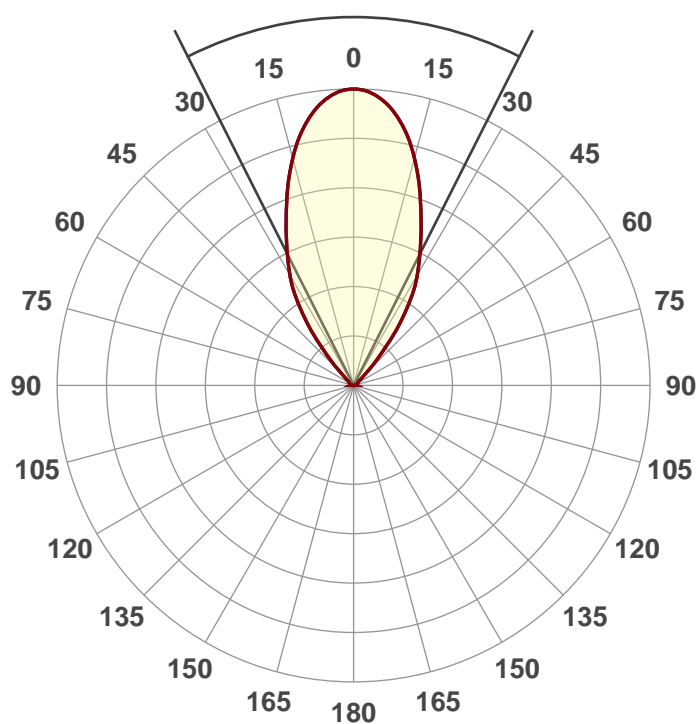
53.5°

Product name:

NU3-QDT-XTM19-27LM-30K-83-S55-
NL-120-DIM10-NC-WH-WH

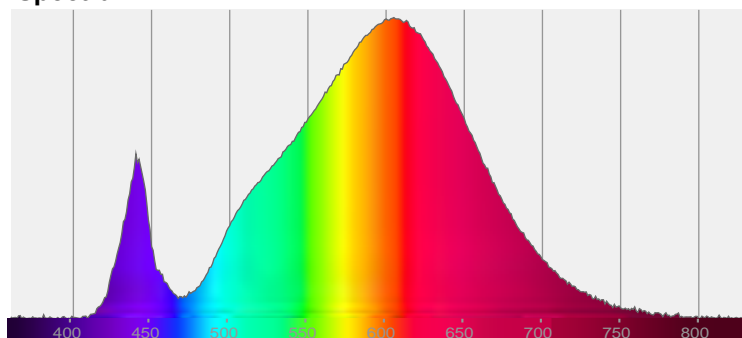
Date and time:

12/1/2017 10:07:59 AM

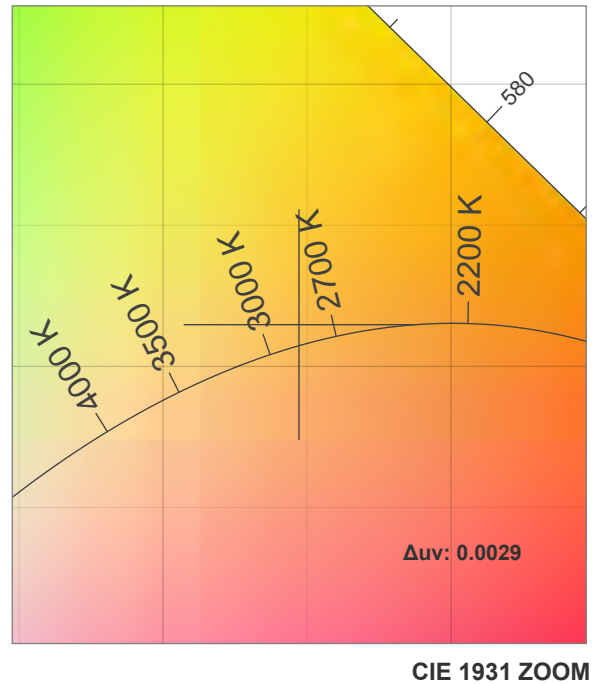
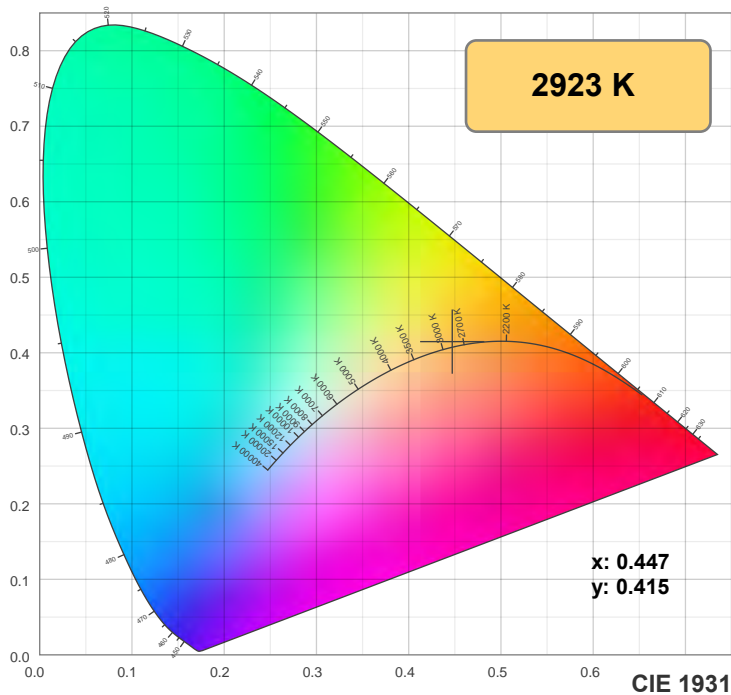


CIE 1931
x: 0.447
y: 0.415

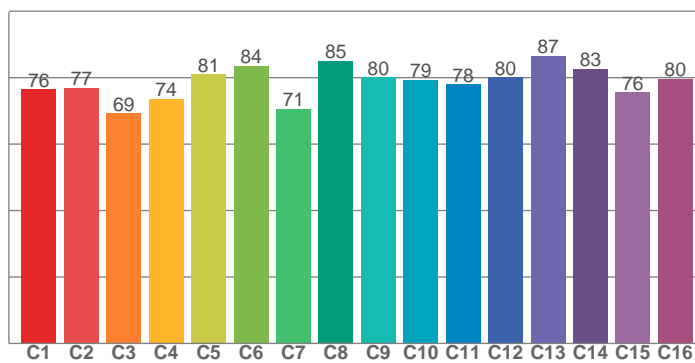
Spectra



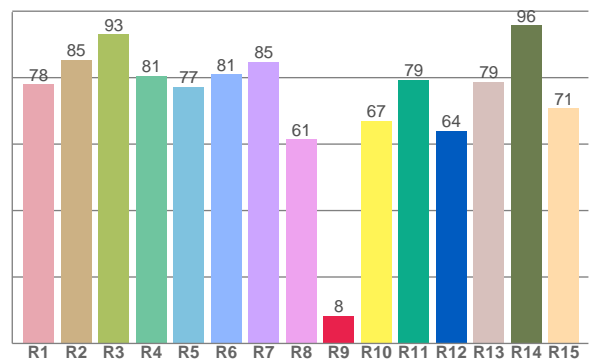
Color details



TM30: 78.4



CRI: 80.2 (R1-R8)



CRI R values, only R1-R8 are used to calculate final CRI value

R1	R2	R3	R4	R5	R6	R7	R8	R9	R10	R11	R12	R13	R14	R15
77.9	85.4	93.0	80.6	77.2	81.0	84.8	61.4	8.4	67.1	79.4	64.0	78.8	95.7	70.7

TM30 C values, 16 binned values out of total of 99 C values

C1	C2	C3	C4	C5	C6	C7	C8	C9	C10	C11	C12	C13	C14	C15	C16
76.5	77.0	69.2	73.6	81.0	83.6	70.6	85.1	80.1	79.4	78.0	80.1	86.6	82.7	75.6	79.6

Color parameters

Color temperature	Color rendering index	Red component	Color fidelity	Color gamut	Color coordinate cie 1931	Color coordinate cie 1931	Color coordinate	Color coordinate	Color deviation from black body
CCT	CRI	CRI R9	TM30 Rf	TM30 Rg	x	y	u	v	Δuv
2923 K	80.2	8.4	78.4	98.6	0.447	0.415	0.253	0.351	0.0029

TM30 details

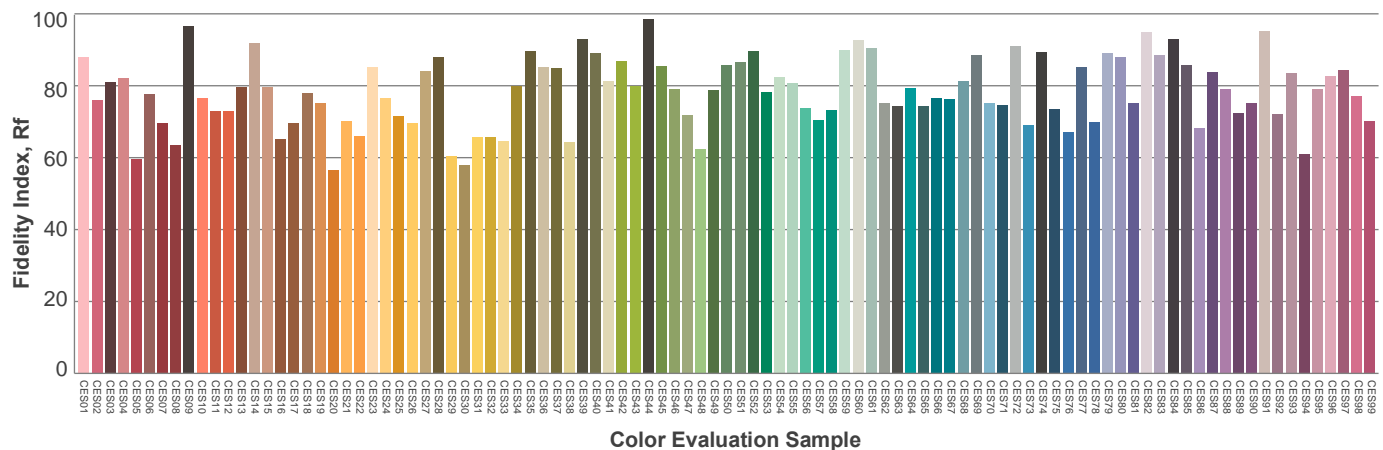
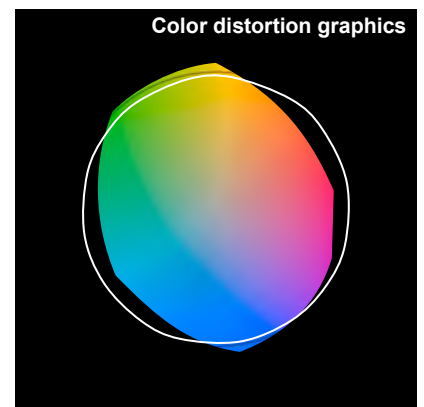
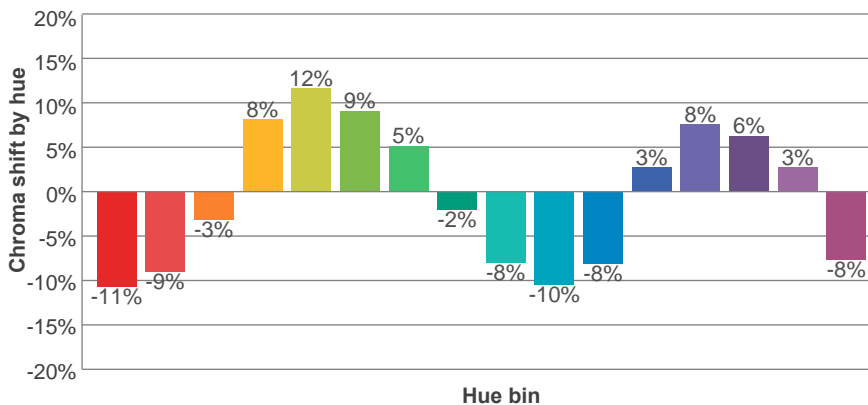
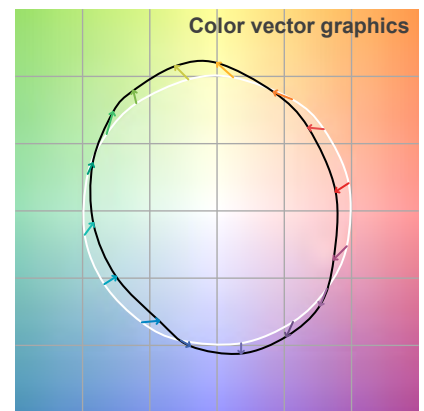
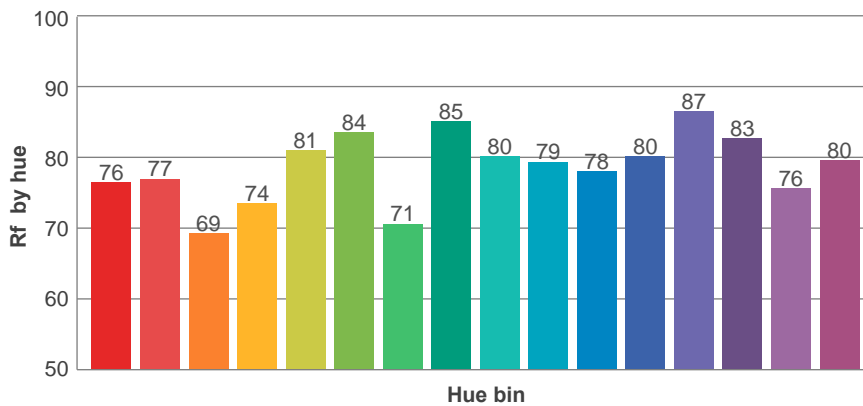
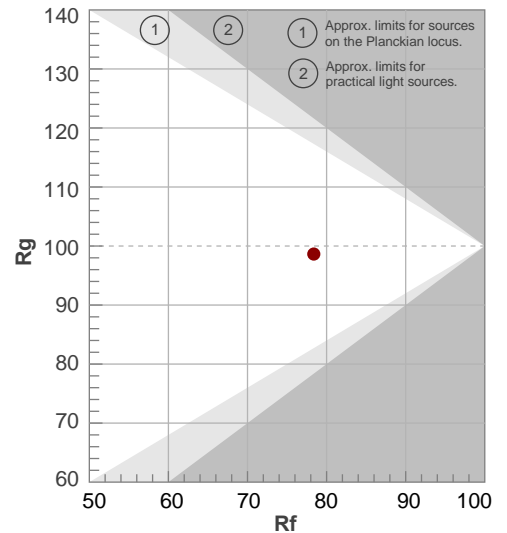
Rf 78.4

Fidelity index Rf

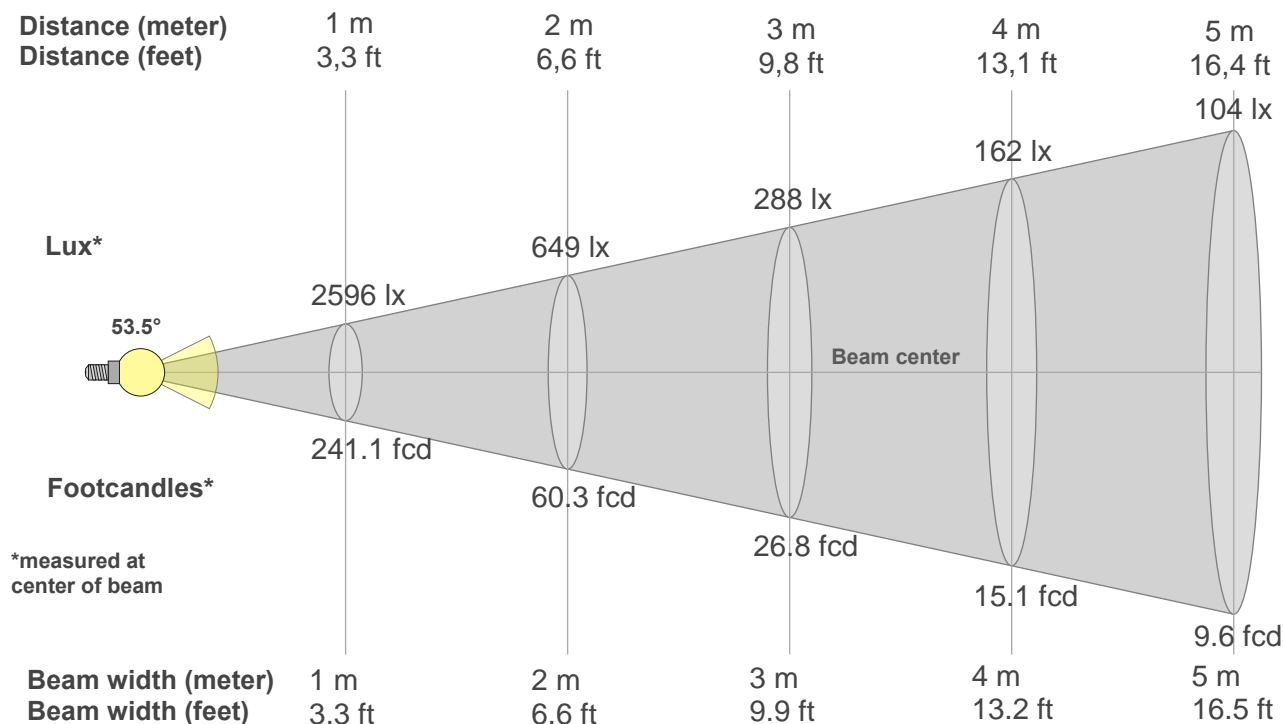
Rg 98.6

Gammut index Rg

Hue Bin	R _f	Graphic shifts (%)	
		Chroma	Hue
1	76	-11%	-4%
2	77	-9%	7%
3	69	-3%	14%
4	74	8%	14%
5	81	12%	8%
6	84	9%	-3%
7	71	5%	-16%
8	85	-2%	-8%
9	80	-8%	-7%
10	79	-10%	0%
11	78	-8%	10%
12	80	3%	7%
13	87	8%	-2%
14	83	6%	-10%
15	76	3%	-13%
16	80	-8%	-12%



Beam details



Beam intensities from 1-20m

1m	2m	3m	4m	5m	6m	7m	8m	9m	10m	11m	12m	13m	14m	15m	16m	17m	18m	19m	20m
3.3ft	6.6ft	9.8ft	13.1ft	16.4ft	19.7ft	23ft	26.2ft	29.5ft	32.8ft	36.1ft	39.4ft	42.7ft	45.9ft	49.2ft	52.5ft	55.8ft	59.1ft	62.3ft	65.6ft
2596lx	649lx	288lx	162lx	104lx	72lx	53lx	41lx	32lx	26lx	21lx	18lx	15lx	13lx	12lx	10lx	9lx	8lx	7lx	6lx
241.1fcd	60.3fcd	26.8fcd	15.1fcd	9.6fcd	6.7fcd	4.9fcd	3.8fcd	3fcd	2.4fcd	2fcd	1.7fcd	1.4fcd	1.2fcd	1.1fcd	0.9fcd	0.8fcd	0.7fcd	0.7fcd	0.6fcd

Intensities in 0° c-plane

0°	2°	4°	6°	8°	10°	12°	14°	16°	18°	20°	22°	24°	26°	28°	30°	32°	34°	36°	38°
2596	2596	2557	2508	2445	2350	2254	2131	2000	1867	1727	1587	1464	1343	1227	1117	1007	871	731	592
100%	100%	99%	97%	94%	91%	87%	82%	77%	72%	67%	61%	56%	52%	47%	43%	39%	34%	28%	23%

Intensities in 90° c-plane

0°	2°	4°	6°	8°	10°	12°	14°	16°	18°	20°	22°	24°	26°	28°	30°	32°	34°	36°	38°
2596	2596	2557	2508	2445	2350	2254	2131	2000	1867	1727	1587	1464	1343	1227	1117	1007	871	731	592
100%	100%	99%	97%	94%	91%	87%	82%	77%	72%	67%	61%	56%	52%	47%	43%	39%	34%	28%	23%

Intensities in 180° c-plane

0°	2°	4°	6°	8°	10°	12°	14°	16°	18°	20°	22°	24°	26°	28°	30°	32°	34°	36°	38°
2596	2596	2557	2508	2445	2350	2254	2131	2000	1867	1727	1587	1464	1343	1227	1117	1007	871	731	592
100%	100%	99%	97%	94%	91%	87%	82%	77%	72%	67%	61%	56%	52%	47%	43%	39%	34%	28%	23%

Intensities in 270° c-plane

0°	2°	4°	6°	8°	10°	12°	14°	16°	18°	20°	22°	24°	26°	28°	30°	32°	34°	36°	38°
2596	2596	2557	2508	2445	2350	2254	2131	2000	1867	1727	1587	1464	1343	1227	1117	1007	871	731	592
100%	100%	99%	97%	94%	91%	87%	82%	77%	72%	67%	61%	56%	52%	47%	43%	39%	34%	28%	23%

Beam angle 50%	Field angle 10%	Cutoff angle 2,5%	Intensity ratio in 120° cone	Intensity ratio in 90° cone
53.5°	86.6°	102.5°	96.2%	92.2%