

Light efficiency:

70 Lumen/Watt

Light quality:

CRI: 83.2

Color temperature:

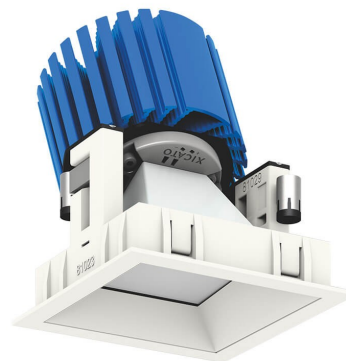
2938 K

Output: 731 lm

Peak: 456 cd

Power: 10.4 W

PF: 0.98



Beam angle

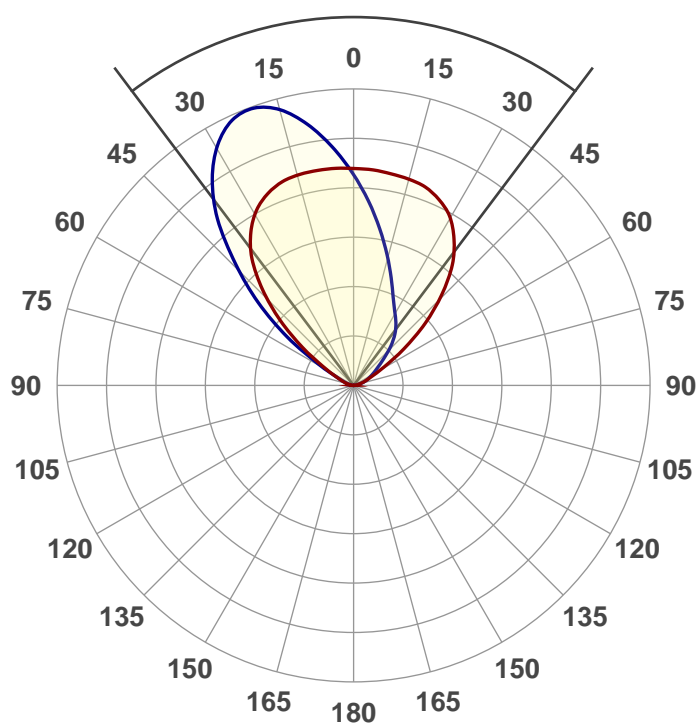
73.9°

Product name:

NU3-QW-XTM19-10LM-30K-83-WW-120-DIM10-NC-WH-WH

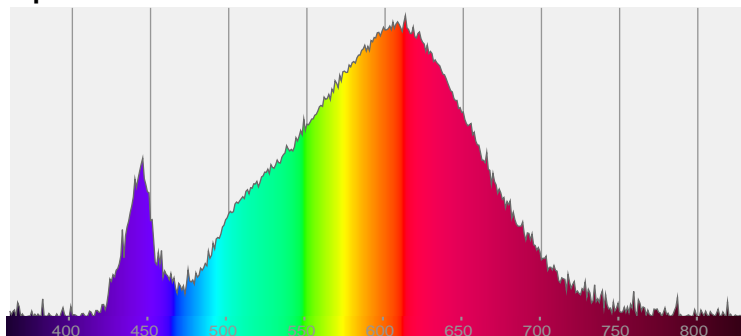
Date and time:

12/27/2017 11:34:22 AM

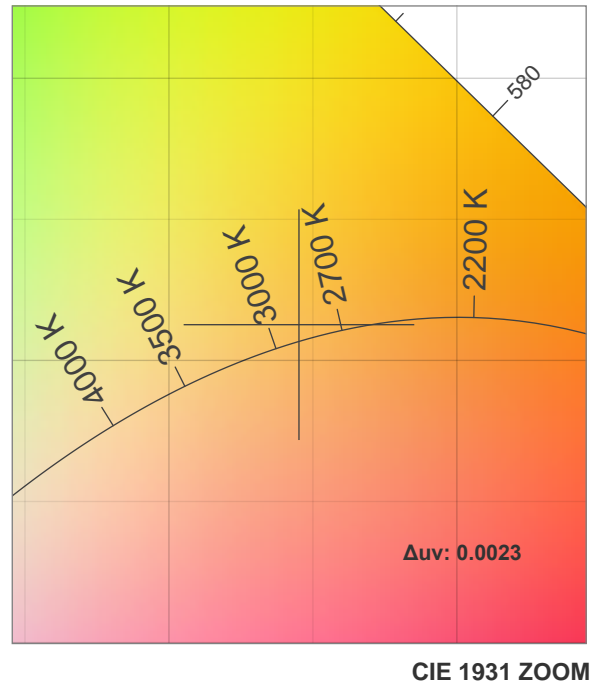
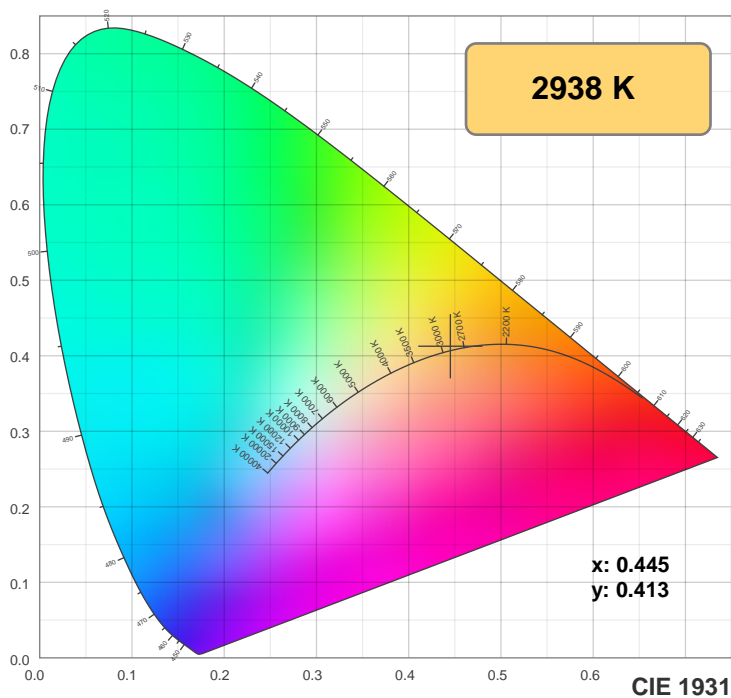


CIE 1931
x: 0.445
y: 0.413

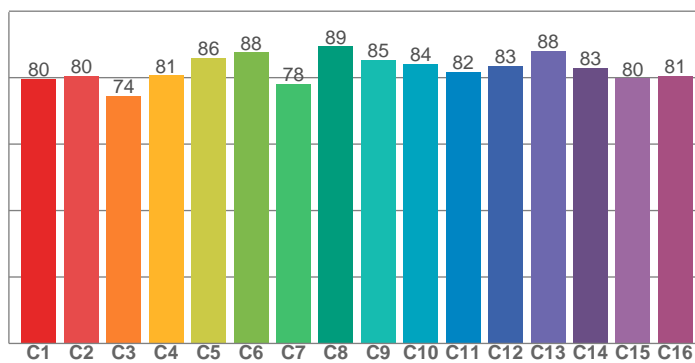
Spectra



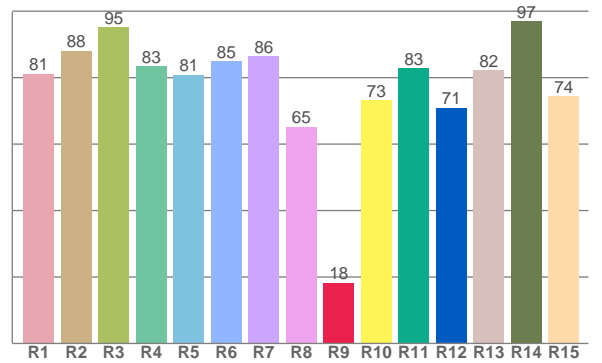
Color details



TM30: 82.5



CRI: 83.2 (R1-R8)



CRI R values, only R1-R8 are used to calculate final CRI value

R1	R2	R3	R4	R5	R6	R7	R8	R9	R10	R11	R12	R13	R14	R15
81.2	88.1	95.1	83.4	80.8	85.0	86.4	65.3	18.3	73.3	82.8	70.9	82.2	96.9	74.4

TM30 C values, 16 binned values out of total of 99 C values

C1	C2	C3	C4	C5	C6	C7	C8	C9	C10	C11	C12	C13	C14	C15	C16
79.7	80.5	74.4	80.7	86.0	87.6	78.1	89.4	85.4	84.2	81.7	83.5	88.1	83.0	79.8	80.6

Color parameters

Color temperature	Color rendering index	Red component	Color fidelity	Color gamut	Color coordinate cie 1931	Color coordinate cie 1931	Color coordinate	Color coordinate	Color deviation from black body
CCT	CRI	CRI R9	TM30 Rf	TM30 Rg	x	y	u	v	Δuv
2938 K	83.2	18.3	82.5	98.6	0.445	0.413	0.252	0.351	0.0023

TM30 details

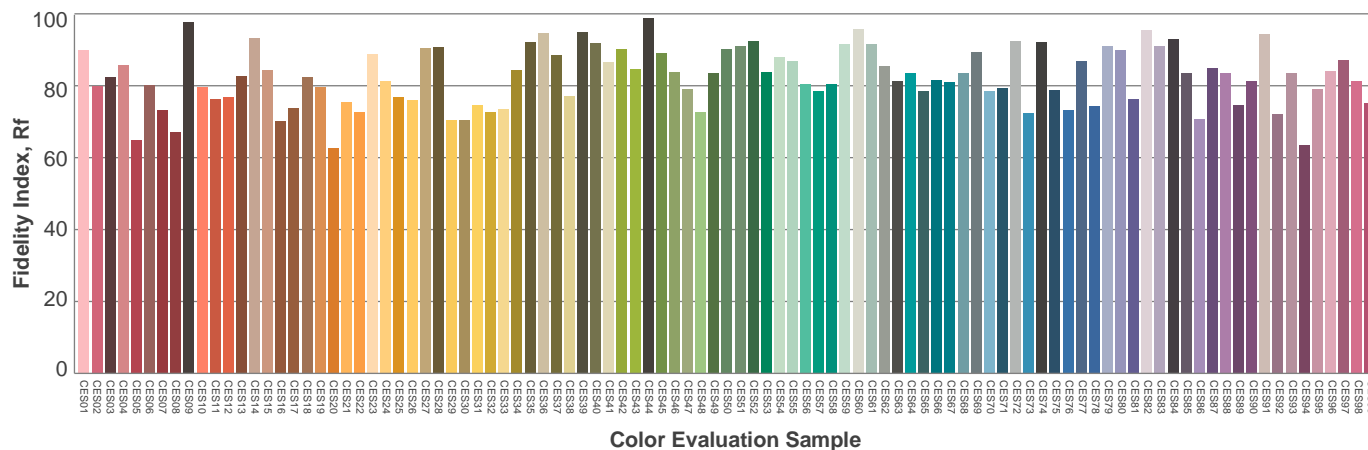
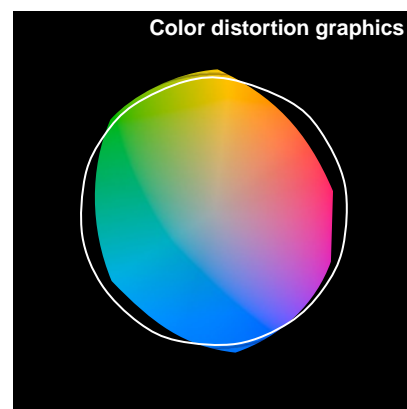
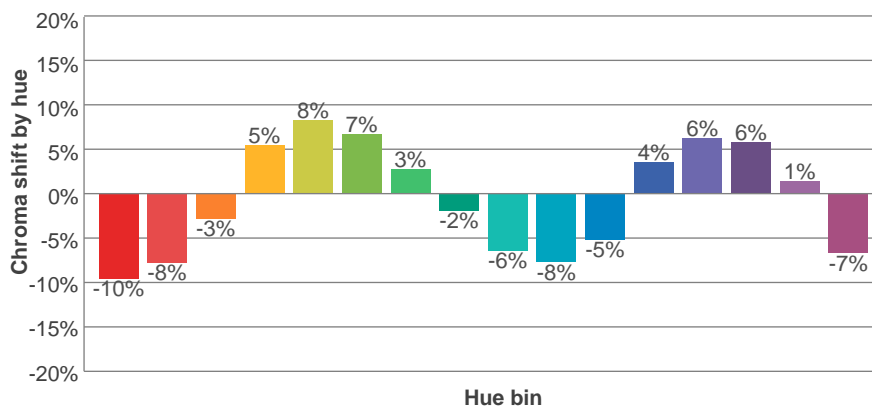
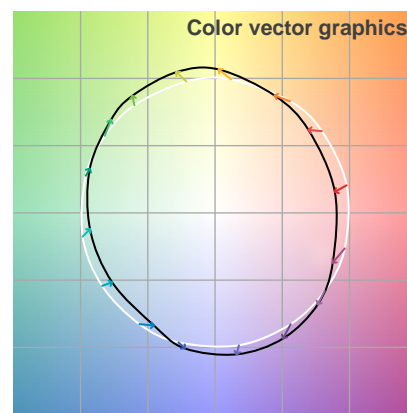
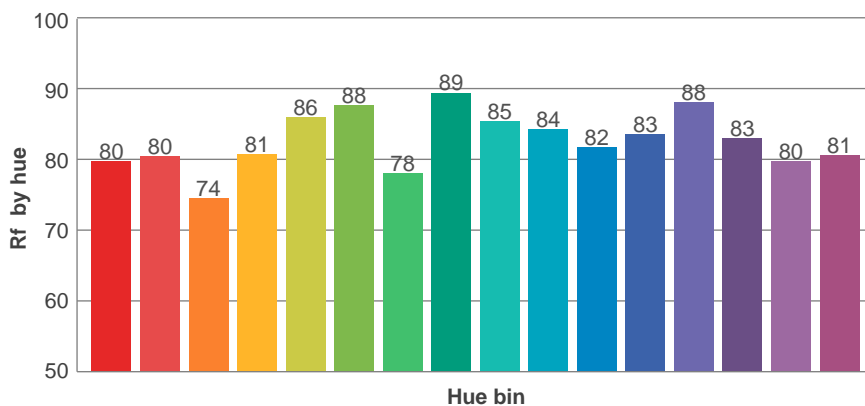
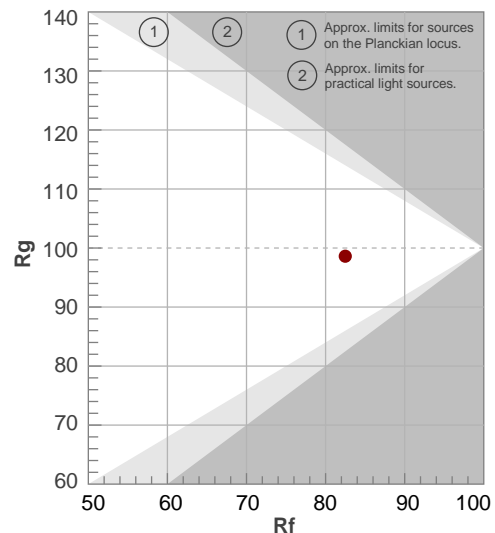
Rf 82.5

Fidelity index Rf

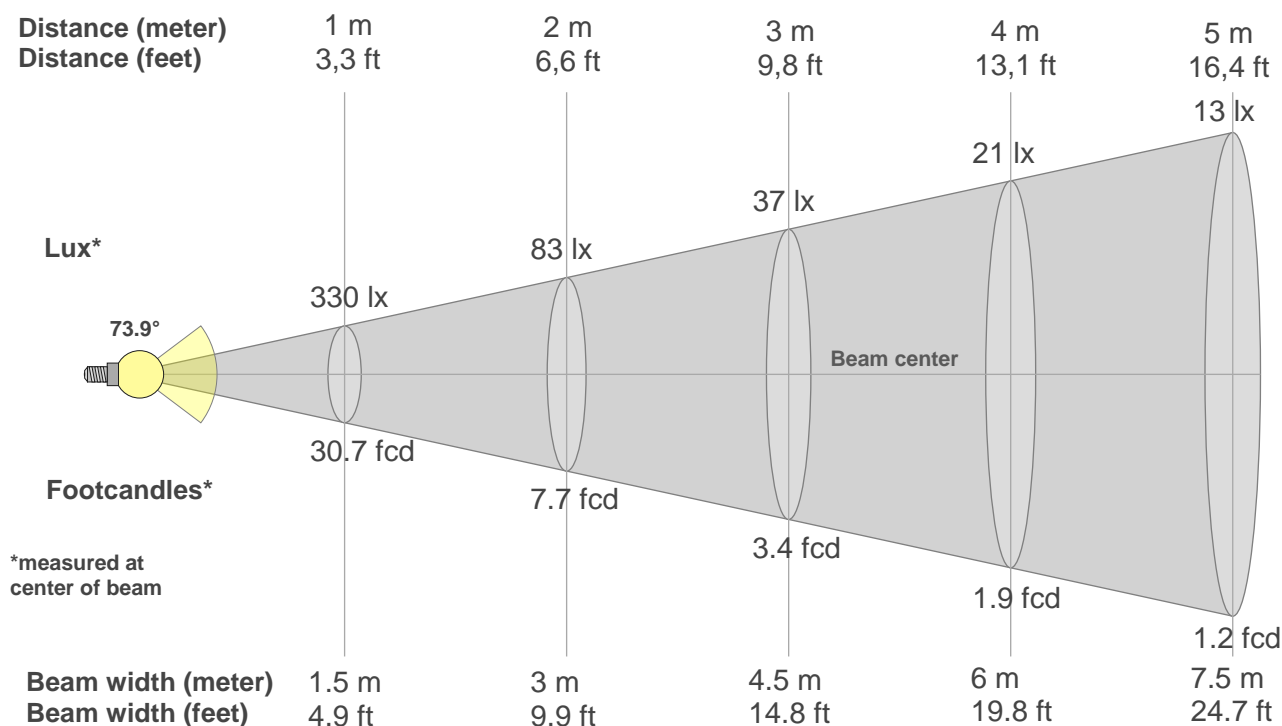
Rg 98.6

Gammut index Rg

Hue Bin	R _f	Graphic shifts (%)	
		Chroma	Hue
1	80	-10%	-3%
2	80	-8%	6%
3	74	-3%	12%
4	81	5%	10%
5	86	8%	6%
6	88	7%	-3%
7	78	3%	-12%
8	89	-2%	-6%
9	85	-6%	-4%
10	84	-8%	2%
11	82	-5%	9%
12	83	4%	6%
13	88	6%	-3%
14	83	6%	-11%
15	80	1%	-11%
16	81	-7%	-12%



Beam details



Beam intensities from 1-20m

1m	2m	3m	4m	5m	6m	7m	8m	9m	10m	11m	12m	13m	14m	15m	16m	17m	18m	19m	20m
3.3ft	6.6ft	9.8ft	13.1ft	16.4ft	19.7ft	23ft	26.2ft	29.5ft	32.8ft	36.1ft	39.4ft	42.7ft	45.9ft	49.2ft	52.5ft	55.8ft	59.1ft	62.3ft	65.6ft
330lx	83lx	37lx	21lx	13lx	9lx	7lx	5lx	4lx	3lx	3lx	2lx	2lx	2lx	1lx	1lx	1lx	1lx	1lx	1lx
30.7fcd	7.7fcd	3.4fcd	1.9fcd	1.2fcd	0.9fcd	0.6fcd	0.5fcd	0.4fcd	0.3fcd	0.3fcd	0.2fcd	0.2fcd	0.2fcd	0.1fcd	0.1fcd	0.1fcd	0.1fcd	0.1fcd	0.1fcd

Intensities in 0° c-plane

0°	5°	10°	15°	20°	25°	30°	35°	40°	45°	50°	55°	60°	65°	70°	75°	80°	85°	90°	95°
330	336	337	336	332	322	304	277	239	189	135	84	47	27	17	10	4	2	1	0
100%	102%	102%	102%	100%	97%	92%	84%	72%	57%	41%	25%	14%	8%	5%	3%	1%	1%	0%	0%

Intensities in 90° c-plane

0°	5°	10°	15°	20°	25°	30°	35°	40°	45°	50°	55°	60°	65°	70°	75°	80°	85°	90°	95°
330	369	409	441	455	449	422	380	322	250	181	113	55	26	15	8	3	1	1	0
100%	112%	124%	133%	138%	136%	128%	115%	97%	76%	55%	34%	17%	8%	5%	3%	1%	0%	0%	0%

Intensities in 180° c-plane

0°	5°	10°	15°	20°	25°	30°	35°	40°	45°	50°	55°	60°	65°	70°	75°	80°	85°	90°	95°
330	334	332	330	326	315	298	270	234	187	137	88	49	28	18	10	5	2	0	0
100%	101%	100%	100%	99%	95%	90%	82%	71%	57%	41%	27%	15%	9%	6%	3%	1%	1%	0%	0%

Intensities in 270° c-plane

0°	5°	10°	15°	20°	25°	30°	35°	40°	45°	50°	55°	60°	65°	70°	75°	80°	85°	90°	95°
330	282	241	204	172	146	128	114	97	77	57	43	33	25	18	10	5	2	0	0
100%	85%	73%	62%	52%	44%	39%	34%	29%	23%	17%	13%	10%	8%	6%	3%	1%	1%	0%	0%

Beam angle 50%	Field angle 10%	Cutoff angle 2,5%	Intensity ratio in 120° cone	Intensity ratio in 90° cone
73.9°	122.4°	149°	93.1%	70.6%