

Light efficiency:

50 Lumen/Watt

Light quality:

CRI: 96.4

Color temperature:

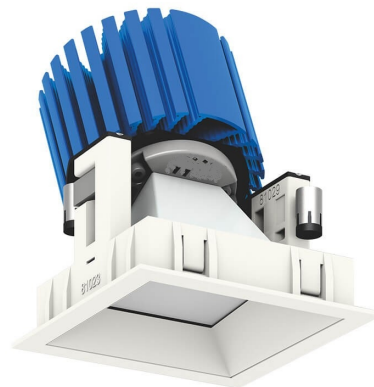
3105 K

Output: 1299 lm

Peak: 696 cd

Power: 25.7 W

PF: 0.98

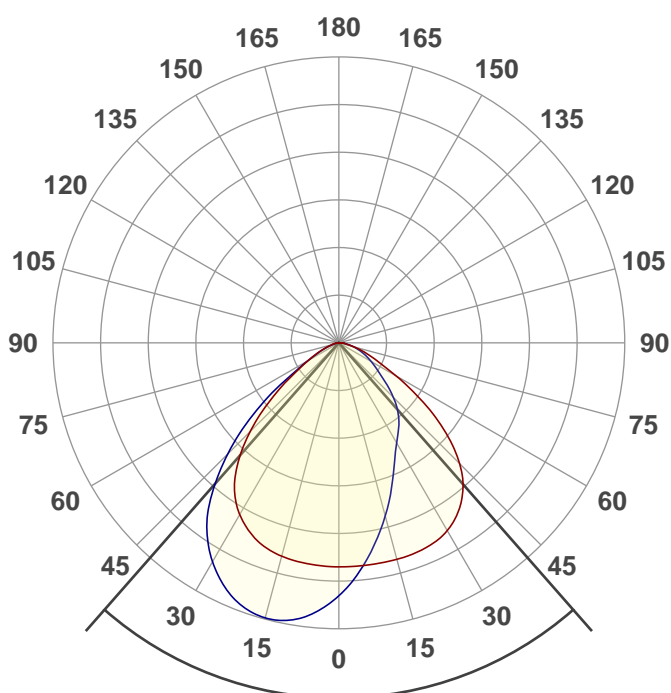


Product name:

NU3-QW-WD-13LM-3018-97-  
WW-120-DIM10-NC-WH-WH

Date and time:

8/29/2018 1:35:23 PM



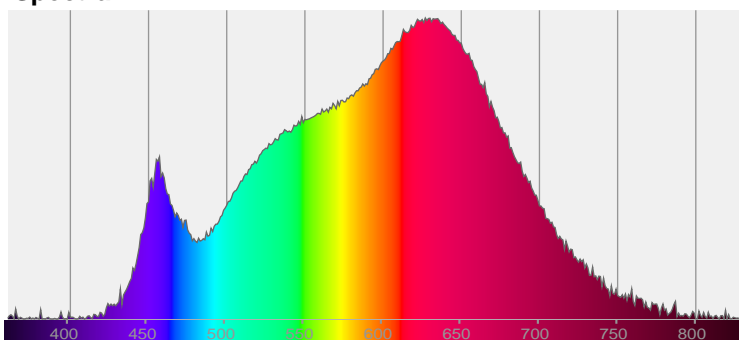
Beam angle

82.6°

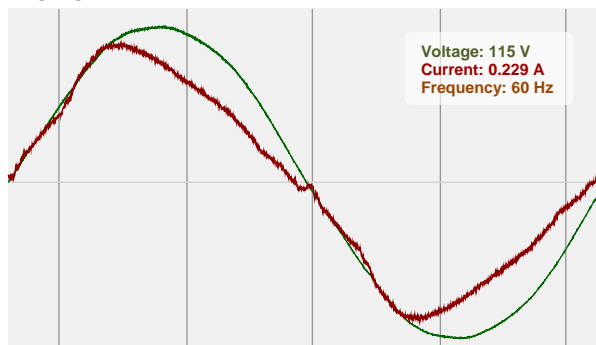


CIE 1931  
x: 0.432  
y: 0.406

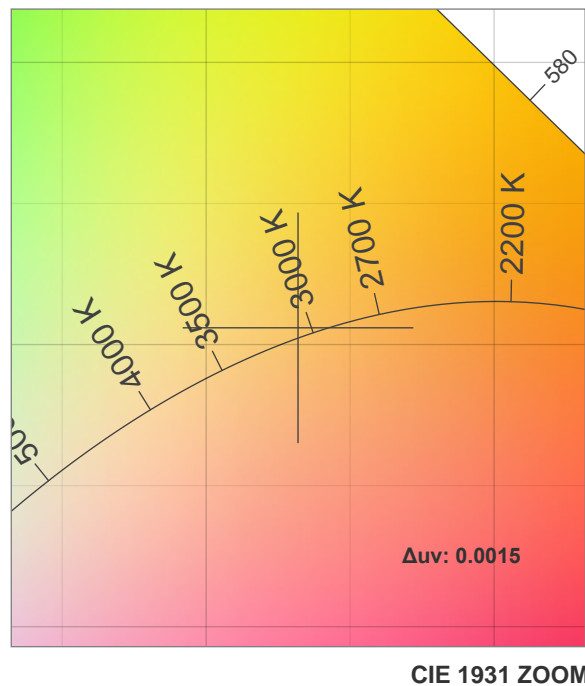
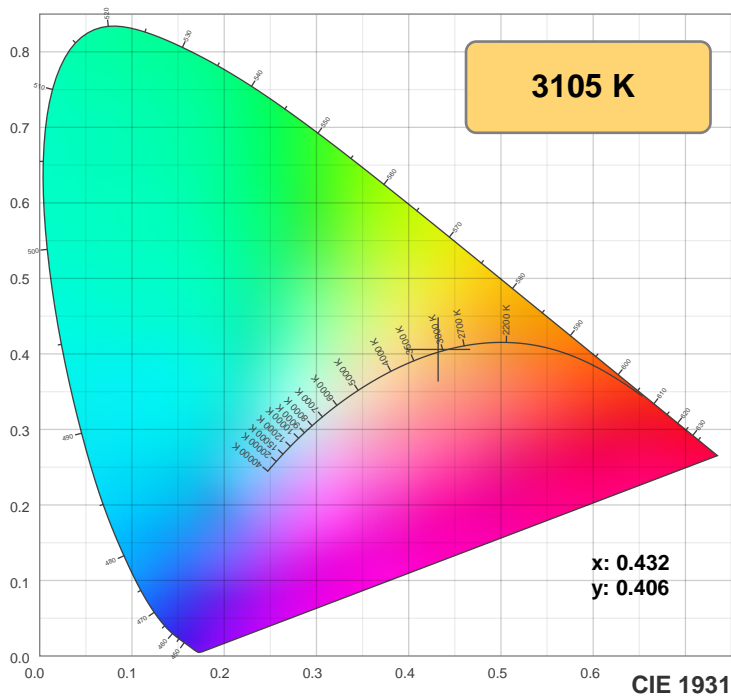
Spectra



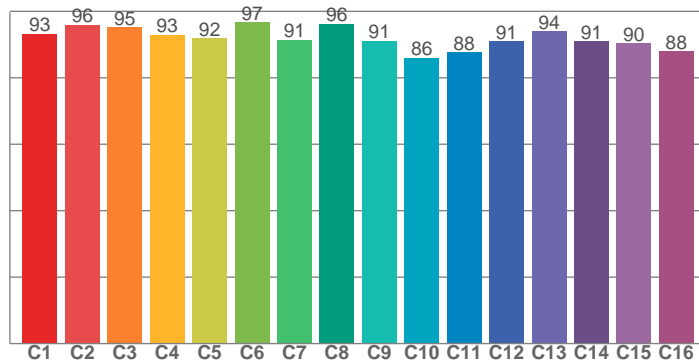
Power



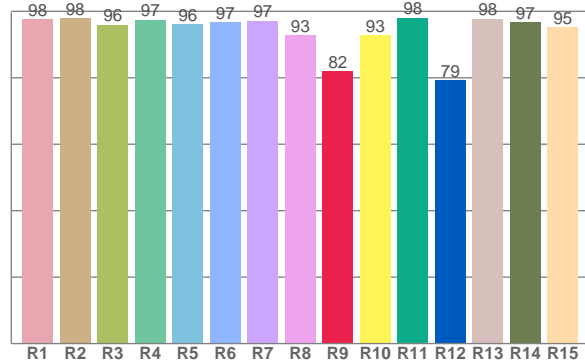
## Color details



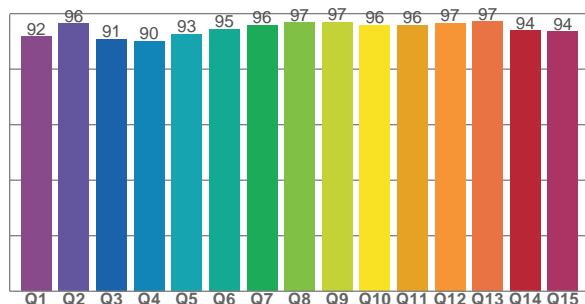
**TM30: 92.0**



**CRI: 96.4 (R1-R8)**



**CQS: 94.0**



**CRI R values, only R1-R8 are used to calculate final CRI value**

R1	R2	R3	R4	R5	R6	R7	R8	R9	R10	R11	R12	R13	R14	R15
97.6	97.8	95.9	97.4	96.1	96.6	97.1	92.8	82.0	92.8	98.0	79.3	97.8	96.7	95.1

**TM30 C values, 16 binned values out of total of 99 C values**

C1	C2	C3	C4	C5	C6	C7	C8	C9	C10	C11	C12	C13	C14	C15	C16
93.2	95.9	95.2	93.0	91.9	96.6	91.5	96.2	91.2	86.0	87.7	91.0	94.0	90.9	90.4	87.9

**CQS Q values**

Q1	Q2	Q3	Q4	Q5	Q6	Q7	Q8	Q9	Q10	Q11	Q12	Q13	Q14	Q15
91.7	96.5	90.9	90.1	92.6	94.5	95.8	96.7	96.9	95.8	95.9	96.6	97.2	93.9	93.5

## Color parameters

Color temperature	Color rendering index	Red component	Color fidelity	Color gamut	Color quality scale	Color coordinate cie 1931	Color coordinate cie 1931	Color coordinate	Color coordinate	Color deviation from black body
CCT	CRI	CRI R9	TM30 Rf	TM30 Rg	CQS	x	y	u	v	Δuv
3105 K	96.4	82.0	92.0	98.9	94.0	0.432	0.406	0.247	0.348	0.0015

## TM30 details

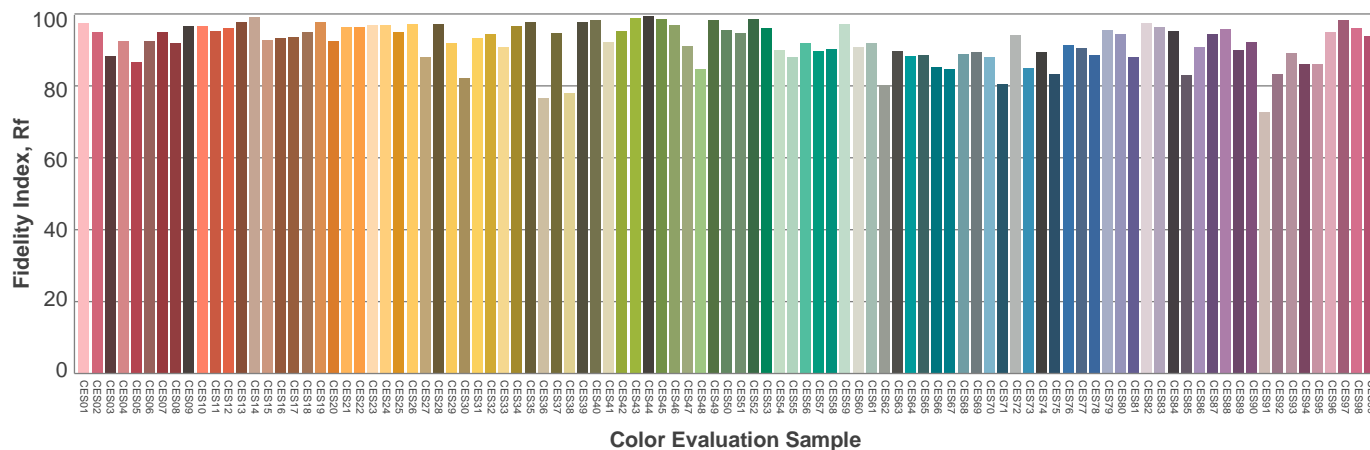
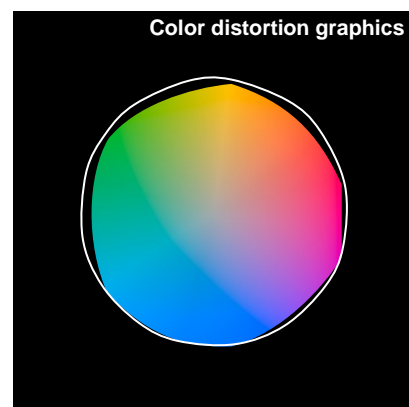
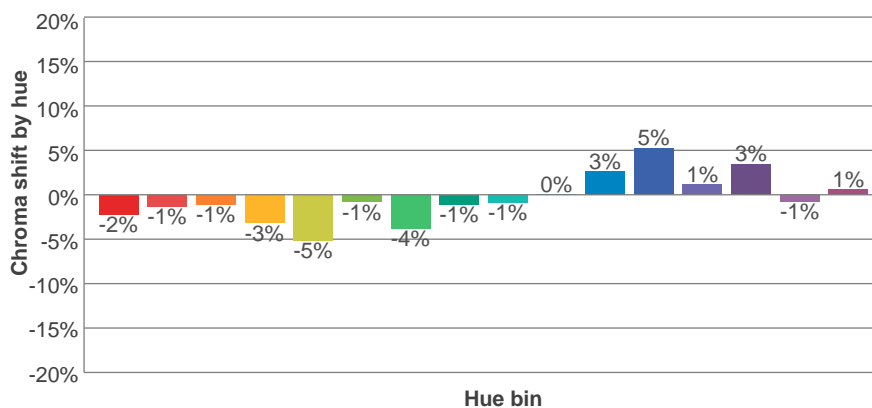
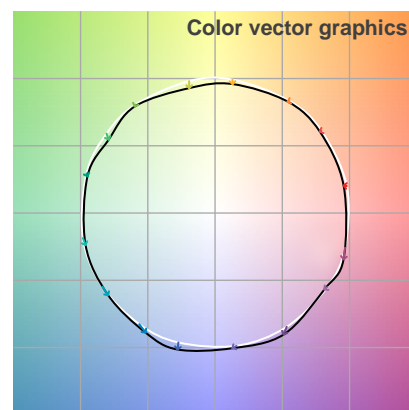
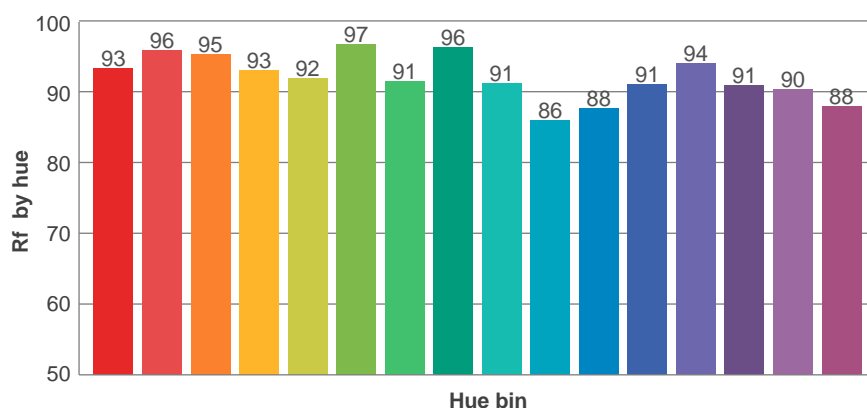
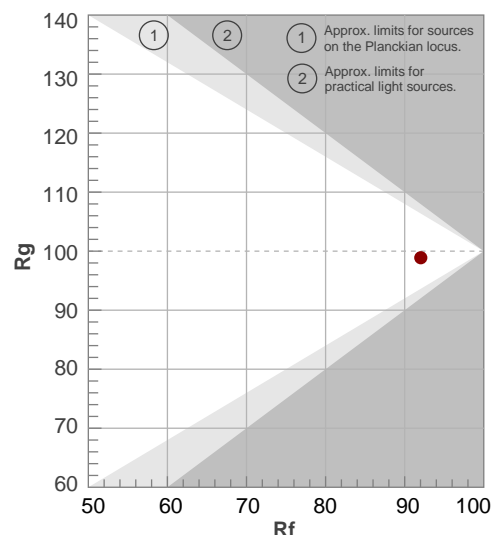
**Rf 92.0**

Fidelity index Rf

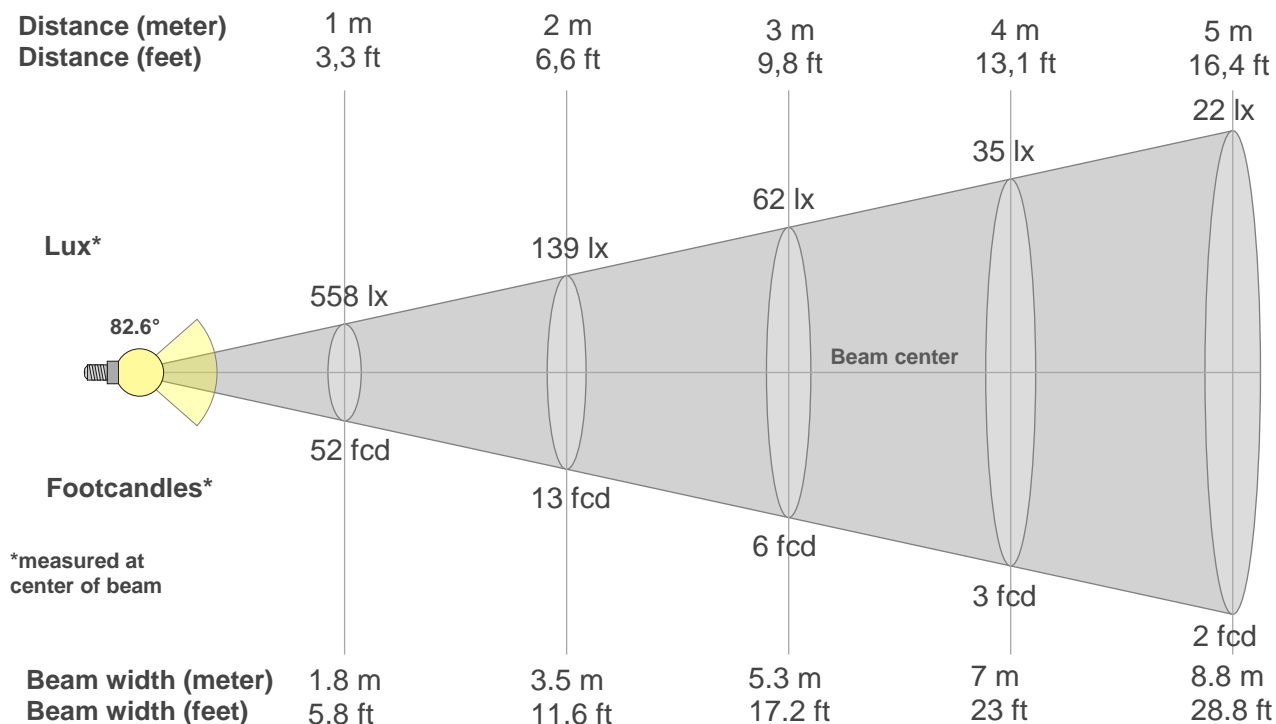
**Rg 98.9**

Gamut index Rg

Hue Bin	R <sub>f</sub>	Graphic shifts (%)	
		Chroma	Hue
1	93	-2%	1%
2	96	-1%	0%
3	95	-1%	1%
4	93	-3%	-1%
5	92	-5%	1%
6	97	-1%	1%
7	91	-4%	3%
8	96	-1%	2%
9	91	-1%	5%
10	86	0%	8%
11	88	3%	7%
12	91	5%	0%
13	94	1%	-3%
14	91	3%	-5%
15	90	-1%	-3%
16	88	1%	-9%



## Beam details



### Beam intensities from 1-20m

1m	2m	3m	4m	5m	6m	7m	8m	9m	10m	11m	12m	13m	14m	15m	16m	17m	18m	19m	20m
3.3ft	6.6ft	9.8ft	13.1ft	16.4ft	19.7ft	23ft	26.2ft	29.5ft	32.8ft	36.1ft	39.4ft	42.7ft	45.9ft	49.2ft	52.5ft	55.8ft	59.1ft	62.3ft	65.6ft
558lx	139lx	62lx	35lx	22lx	15lx	11lx	9lx	7lx	6lx	5lx	4lx	3lx	3lx	2lx	2lx	2lx	2lx	2lx	1lx
51.8fcd	13fcd	5.8fcd	3.2fcd	2.1fcd	1.4fcd	1.1fcd	0.8fcd	0.6fcd	0.5fcd	0.4fcd	0.4fcd	0.3fcd	0.3fcd	0.2fcd	0.2fcd	0.2fcd	0.2fcd	0.1fcd	0.1fcd

### Intensities in 0° c-plane

0°	5°	10°	15°	20°	25°	30°	35°	40°	45°	50°	55°	60°	65°	70°	75°	80°	85°	90°	95°
558	544	544	544	543	538	526	503	467	413	337	249	164	103	67	39	21	11	9	0
100%	98%	98%	98%	97%	96%	94%	90%	84%	74%	60%	45%	29%	18%	12%	7%	4%	2%	2%	0%

### Intensities in 90° c-plane

0°	5°	10°	15°	20°	25°	30°	35°	40°	45°	50°	55°	60°	65°	70°	75°	80°	85°	90°	95°
558	559	498	436	376	322	282	253	223	187	147	115	91	71	53	36	21	11	3	0
100%	100%	89%	78%	67%	58%	51%	45%	40%	34%	26%	21%	16%	13%	9%	7%	4%	2%	1%	0%

### Intensities in 180° c-plane

0°	5°	10°	15°	20°	25°	30°	35°	40°	45°	50°	55°	60°	65°	70°	75°	80°	85°	90°	95°
558	543	541	536	526	508	480	440	380	304	220	142	89	55	31	16	9	2	1	0
100%	97%	97%	96%	94%	91%	86%	79%	68%	54%	39%	25%	16%	10%	6%	3%	2%	0%	0%	0%

### Intensities in 270° c-plane

0°	5°	10°	15°	20°	25°	30°	35°	40°	45°	50°	55°	60°	65°	70°	75°	80°	85°	90°	95°
558	656	682	690	680	653	612	556	478	381	274	167	90	52	29	12	5	1	1	0
100%	118%	122%	124%	122%	117%	110%	100%	86%	68%	49%	30%	16%	9%	5%	2%	1%	0%	0%	0%

Beam angle 50%	Field angle 10%	Cutoff angle 2,5%	Intensity ratio in 120° cone	Intensity ratio in 90° cone
82.6°	132.4°	156.4°	89.9%	65.7%