

Light efficiency:

78 Lumen/Watt

Light quality:

CRI: 80.7

Color temperature:

3076 K

Output: 3190 lm

Peak: 9587 cd

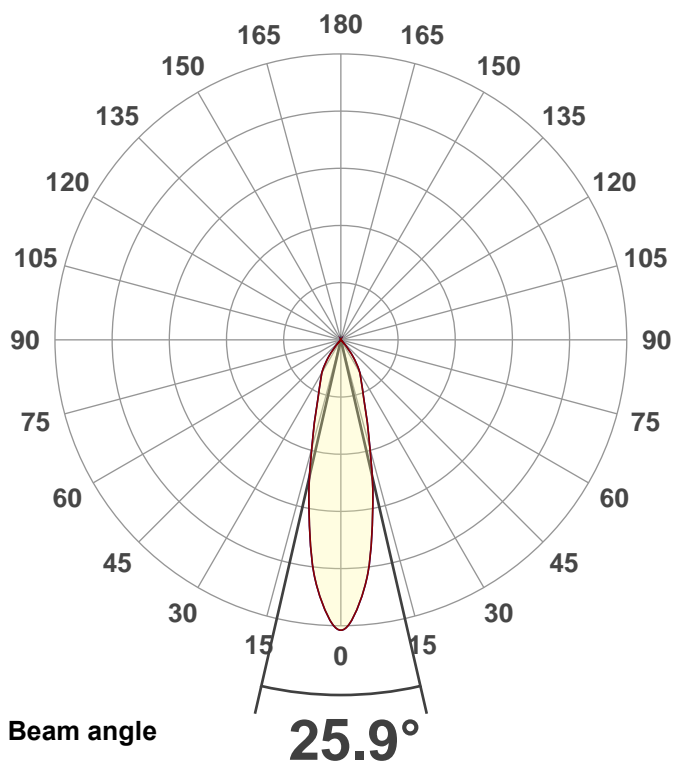
Power: 40.7 W

PF: 0.98



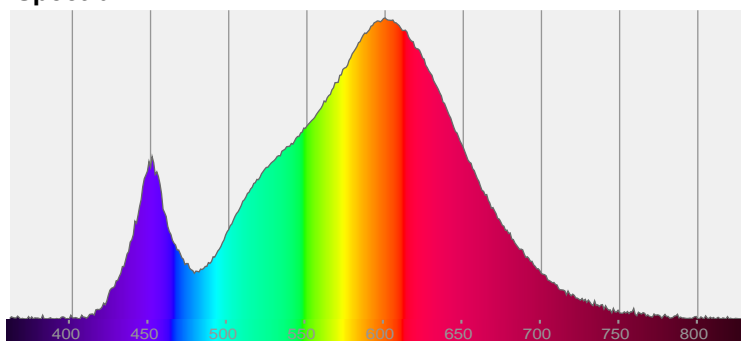
NU3-RD-SW-40LM-30K-80-25C-120-DIM10-NC-WH-WH

Date and time:
11/9/2020 1:13:42 PM

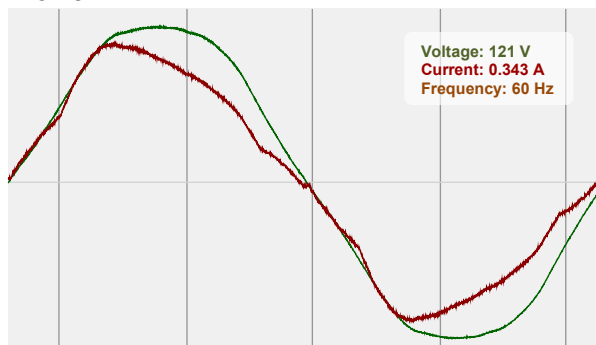


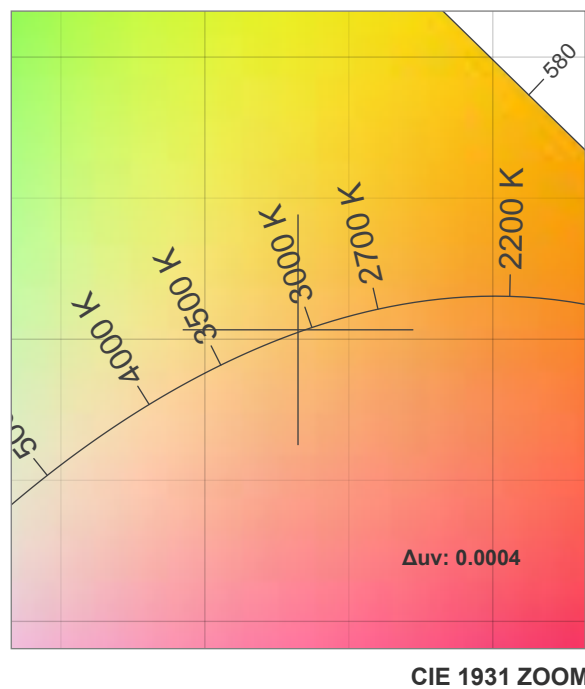
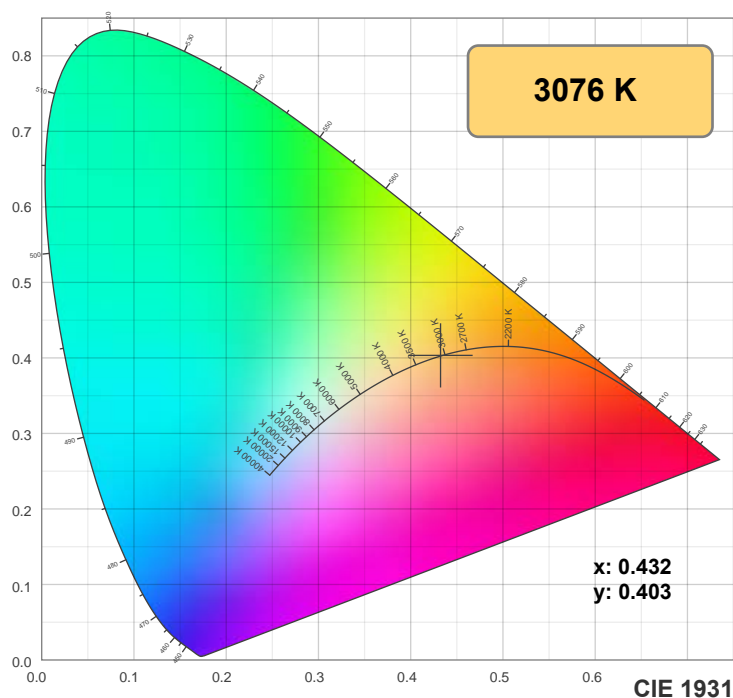
CIE 1931
x: 0.432
y: 0.403

Spectra

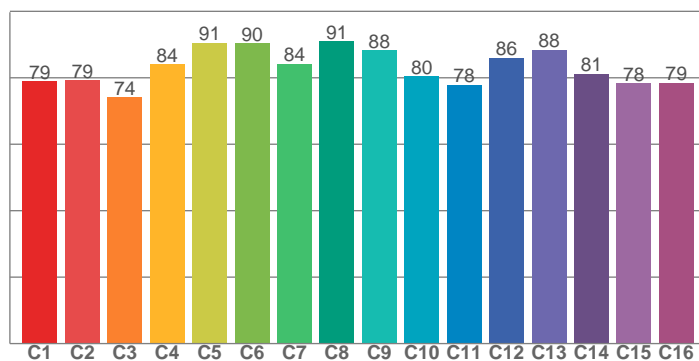


Power

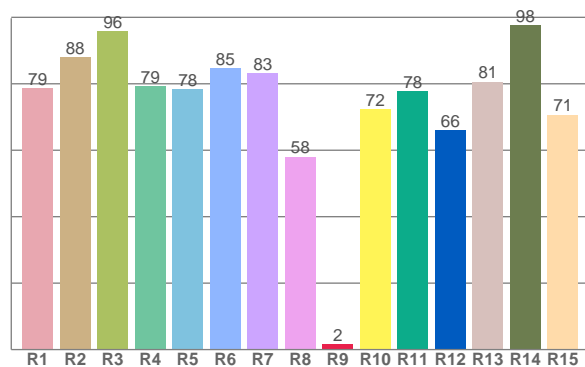




TM30: 83.0



CRI: 80.7 (R1-R8)



CRI R values, only R1-R8 are used to calculate final CRI value

R1	R2	R3	R4	R5	R6	R7	R8	R9	R10	R11	R12	R13	R14	R15
78.6	88.1	95.9	79.3	78.3	84.6	83.2	58.1	1.6	72.4	77.8	66.0	80.6	97.7	70.7

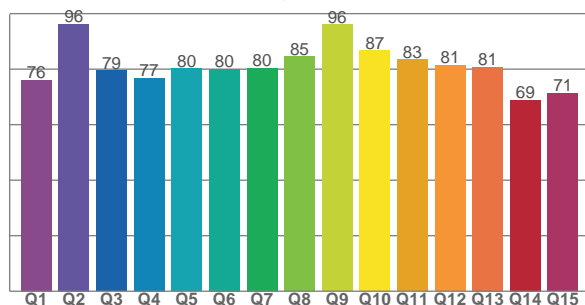
TM30 C values, 16 binned values out of total of 99 C values

C1	C2	C3	C4	C5	C6	C7	C8	C9	C10	C11	C12	C13	C14	C15	C16
78.9	79.3	74.1	84.0	90.5	90.3	84.1	91.0	88.3	80.4	77.9	86.0	88.4	81.2	78.3	78.5

CQS Q values

Q1	Q2	Q3	Q4	Q5	Q6	Q7	Q8	Q9	Q10	Q11	Q12	Q13	Q14	Q15
76.2	96.3	79.4	76.9	80.2	80.1	80.4	84.6	96.0	86.7	83.5	81.4	80.7	68.9	71.3

CQS: 80.0



Color parameters

Color temperature	Color rendering index	Red component	Color fidelity	Color gamut	Color quality scale	Color coordinate cie 1931	Color coordinate cie 1931	Color coordinate	Color coordinate	Color deviation from black body
CCT	CRI	CRI R9	TM30 Rf	TM30 Rg	CQS	x	y	u	v	Δuv
3076 K	80.7	1.6	83.0	96.8	80.0	0.432	0.403	0.248	0.347	0.0004

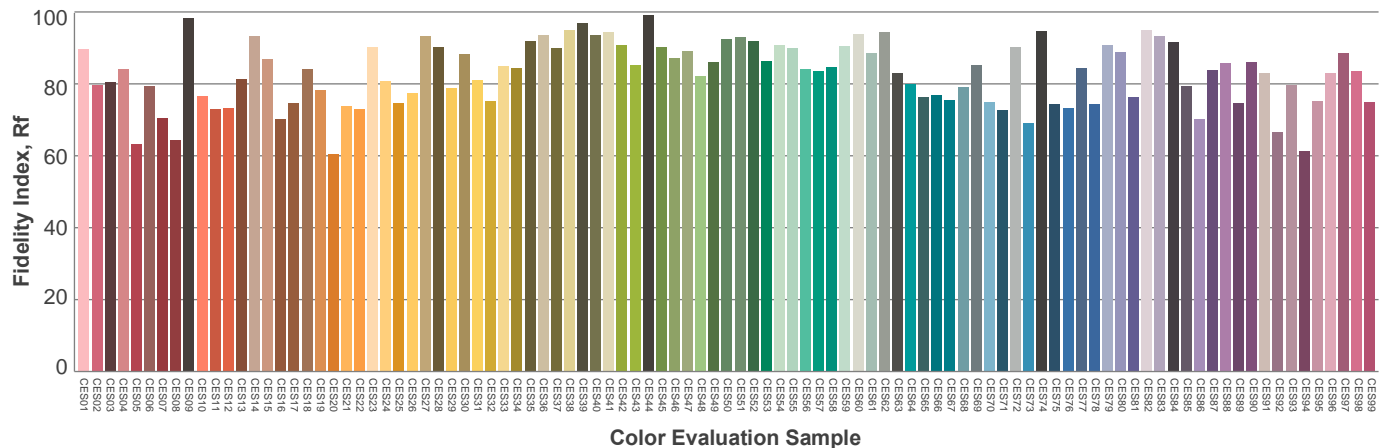
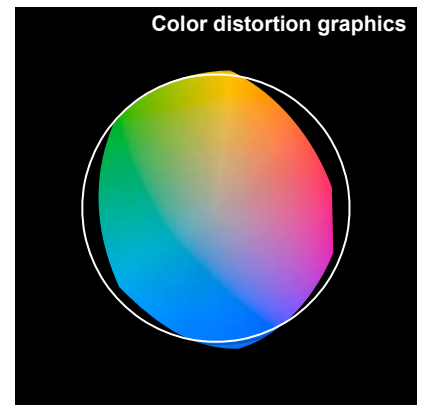
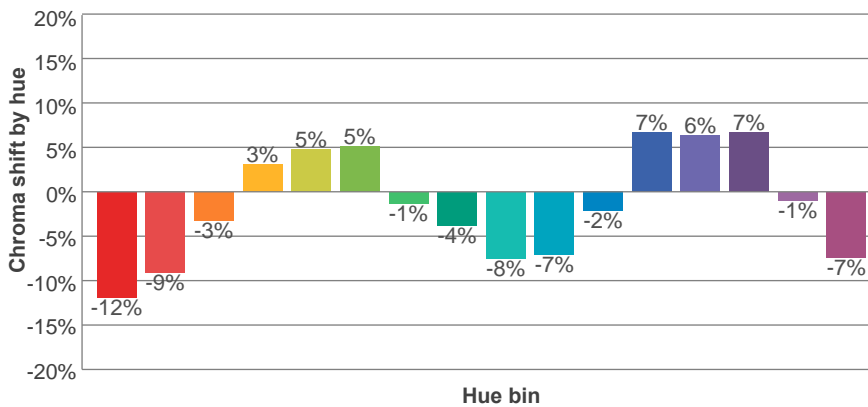
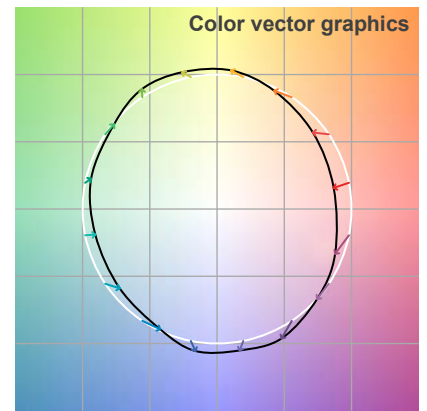
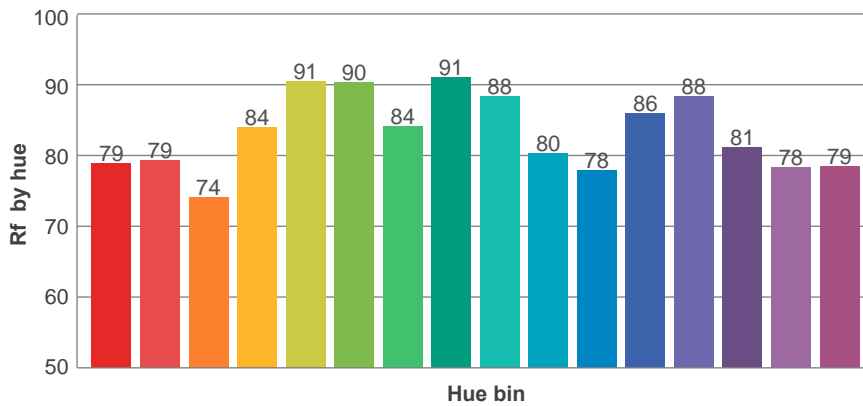
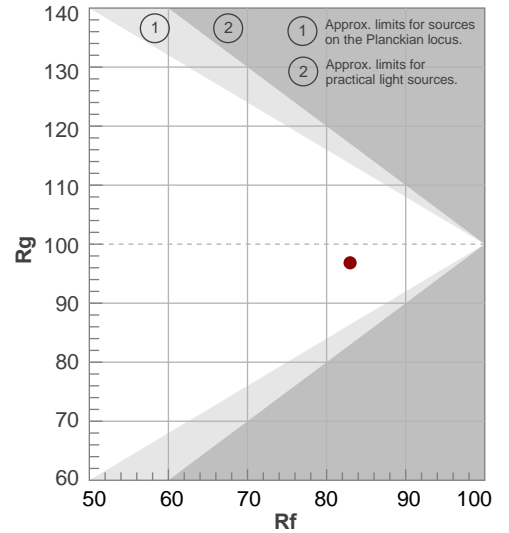
Rf 83.0

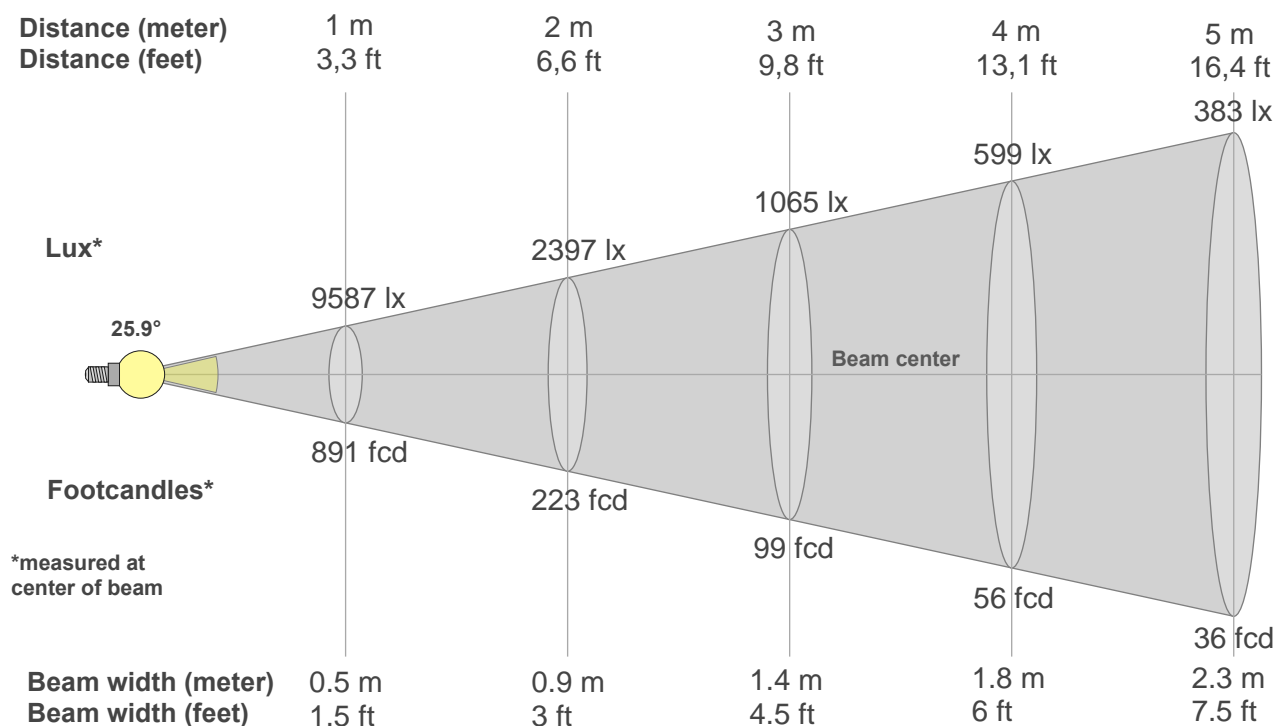
Fidelity index Rf

Rg 96.8

Gamut index Rg

Hue Bin	R _f	Graphic shifts (%)	
		Chroma	Hue
1	79	-12%	-2%
2	79	-9%	8%
3	74	-3%	13%
4	84	3%	10%
5	91	5%	6%
6	90	5%	-3%
7	84	-1%	-10%
8	91	-4%	-4%
9	88	-8%	1%
10	80	-7%	9%
11	78	-2%	15%
12	86	7%	5%
13	88	6%	-4%
14	81	7%	-14%
15	78	-1%	-14%
16	79	-7%	-16%





Beam intensities from 1-20m

1m	2m	3m	4m	5m	6m	7m	8m	9m	10m	11m	12m	13m	14m	15m	16m	17m	18m	19m	20m
3.3ft	6.6ft	9.8ft	13.1ft	16.4ft	19.7ft	23ft	26.2ft	29.5ft	32.8ft	36.1ft	39.4ft	42.7ft	45.9ft	49.2ft	52.5ft	55.8ft	59.1ft	62.3ft	65.6ft
9587lx	2397lx	1065lx	599lx	383lx	266lx	196lx	150lx	118lx	96lx	79lx	67lx	57lx	49lx	43lx	37lx	33lx	30lx	27lx	24lx
890.7fc	222.7fc	99fcd	55.7fcd	35.6fcd	24.7fcd	18.2fcd	13.9fcd	11fcd	8.9fcd	7.4fcd	6.2fcd	5.3fcd	4.5fcd	4fcd	3.5fcd	3.1fcd	2.7fcd	2.5fcd	2.2fcd

Intensities in 0° c-plane

0°	2°	4°	6°	8°	10°	12°	14°	16°	18°	20°	22°	24°	26°	28°	30°	32°	34°	36°	38°
9587	9494	8812	8130	7209	6184	5199	4337	3475	2922	2439	2049	1814	1580	1421	1268	1092	891	691	500
100%	99%	92%	85%	75%	64%	54%	45%	36%	30%	25%	21%	19%	16%	15%	13%	11%	9%	7%	5%

Intensities in 90° c-plane

0°	2°	4°	6°	8°	10°	12°	14°	16°	18°	20°	22°	24°	26°	28°	30°	32°	34°	36°	38°
9587	9494	8812	8130	7209	6184	5199	4337	3475	2922	2439	2049	1814	1580	1421	1268	1092	891	691	500
100%	99%	92%	85%	75%	64%	54%	45%	36%	30%	25%	21%	19%	16%	15%	13%	11%	9%	7%	5%

Intensities in 180° c-plane

0°	2°	4°	6°	8°	10°	12°	14°	16°	18°	20°	22°	24°	26°	28°	30°	32°	34°	36°	38°
9587	9494	8812	8130	7209	6184	5199	4337	3475	2922	2439	2049	1814	1580	1421	1268	1092	891	691	500
100%	99%	92%	85%	75%	64%	54%	45%	36%	30%	25%	21%	19%	16%	15%	13%	11%	9%	7%	5%

Intensities in 270° c-plane

0°	2°	4°	6°	8°	10°	12°	14°	16°	18°	20°	22°	24°	26°	28°	30°	32°	34°	36°	38°
9587	9494	8812	8130	7209	6184	5199	4337	3475	2922	2439	2049	1814	1580	1421	1268	1092	891	691	500
100%	99%	92%	85%	75%	64%	54%	45%	36%	30%	25%	21%	19%	16%	15%	13%	11%	9%	7%	5%

Beam angle 50°	Field angle 10°	Cutoff angle 2,5%	Intensity ratio in 120° cone	Intensity ratio in 90° cone
{B_ANG}°	66.7°	81.4°	99.3%	98.6%