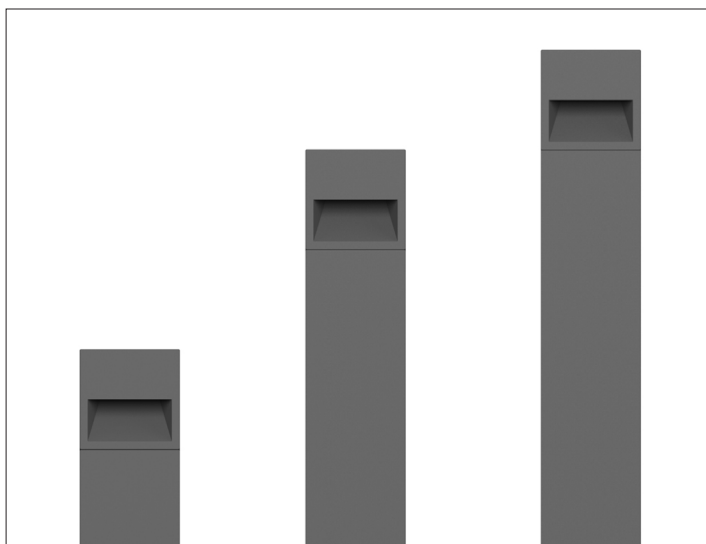
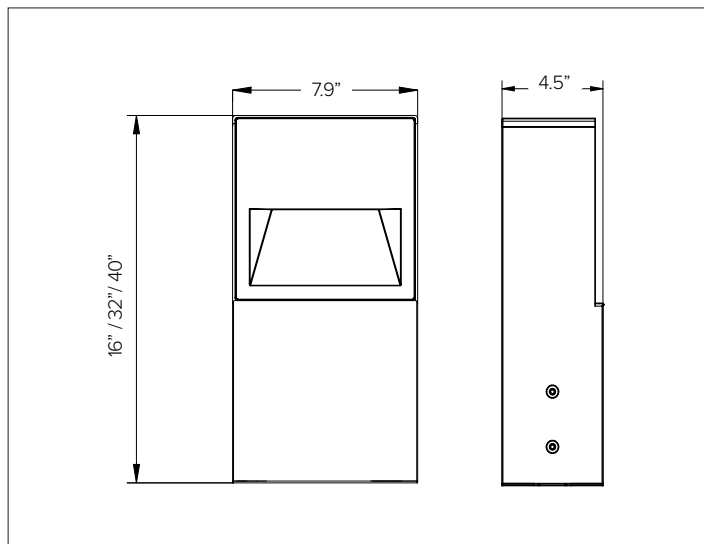


# ZEDGE PRO BOLLARD

## Small Scale Professional LED Bollard



Shown in Ferrite Dark Grey finish.



### CONCEPT

Professional high-performance LED bollard for use in indoor and outdoor applications. *Designed in collaboration with Gensler as Product Design Consultant.*

### MECHANICAL CHARACTERISTICS

<b>Housing</b>	7.9"W x 4.5"D
<b>Materials</b>	Powder coated die-cast anodized aluminum fixture body and external frame. Independently sealed optical head and heat sink with anodized powder coated extruded aluminum post. Aesthetically coordinated with no visible hardware between fixture and post. Clean fit seams between fixture and bollard body.
<b>Finish</b>	Textured finish. <ul style="list-style-type: none"> <li>● Ferrite Dark Grey   ● Heritage Brown   ● Bronze</li> <li>● Black   ● White   ● Sandstone Grey</li> </ul>
<b>Power Connection</b>	Factory shipped with DSM&T IP68 quick disconnect at fixture and mating 4ft SJOOW 18-6 cable with purple and grey wires for 0-10V.
<b>Mounting</b>	Available with three different post heights - 16in, 32in, 40in. 316L grade stainless steel base and stainless steel anti-theft screws. Optional integral 90 minute emergency battery back at 8W output (14W 57% / 19W 42% / 27W 30%); ambient temperature not to drop below 0°C or exceed 50°C. Optional integral smart PIR motion sensor factory preset to 100% ON fade to 10% output after 30 minutes if no motion is detected, contact factory for custom settings.
<b>Weight</b>	3lbs
<b>BUG</b>	B0-U0-G0 (DP Optic) / B0-U0-G1 (WD Optic) Dark Sky Compliant
<b>Protection</b>	IP66
<b>Impact</b>	IK10

### CERTIFICATIONS

cULus Wet Location Listed.  
 Tested in accordance with LM-79-08.  
 Compliant for California installations.  
 RoHS3 EU 215/863

### WARRANTY

5 year limited warranty

### SUSTAINABILITY

Luminaire designed for disposal/recycling at end-of-life. Replaceable LED light source and control gear by a Targetti technician.

### ELECTRICAL CHARACTERISTICS

<b>Power Supply</b>	Integral 4/1 smart driver (Non-Dimmable / 0-10V / Reverse Phase / Forward Phase) to 1% dim range.
<b>Wattage</b>	15W
<b>Voltage</b>	Universal Voltage 120-277V AC 50/60Hz

### SOURCE

Two high efficiency LED Chip on Board.

TM30	CCT (Nominal)	CRI	Rf	Rg	SDCM
	2700K	84	90.9	100.1	3
	3000K	84	90.3	100.4	3
	3500K	84	83.6	96.5	3
	4000K	84	89.8	98.7	3

*Ra90 available upon request*

### OPTIC

The internal optical system is composed of two metalized polycarbonate reflectors coupled to two high reflective anodized aluminum reflectors with holographic filters. Regressed silk-screen extra clear glass lens. Available in three different versions: DP – fixed deep beam, WD – fixed wide beam, AD – adjustable between DEEP to WIDE distributions.

Beam	DP 44° x 53°		WD 32° x 105°	
	<b>Delivered Lumens</b>	<b>2700K</b>	693Lm	465Lm
	<b>3000K</b>	728Lm	488Lm	488Lm
	<b>3500K</b>	731Lm	479Lm	479Lm
	<b>4000K</b>	747Lm	501Lm	501Lm
<b>Efficacy</b>	52Lm/W max. Refer to photometric graphs for specific values.			
<b>Lifetime</b>	L91/B10 30,000hrs at max TA +25°C L88/B10 50,000hrs at max TA +25°C			
<b>Photobiological Classification</b>	Low risk photobiological safety RG1			

# ZEDGE PRO BOLLARD

## SPECIFICATION INFORMATION

ZPB

Ex: ZPB4116DPL330FE / 1US34501 / 1US2530

OPTIONAL

REQUIRED

1 - PRODUCT CODE	2 - DRIVER	3 - HEIGHT	4 - DISTRIBUTION	5 - WATTAGE	6 - KELVIN	7 - FINISH
ZPB — ZEDGE PRO BOLLARD	41 — 4/1 Smart Dimming (Non-Dimming / 0-10V / Reverse Phase / Forward Phase)	16 – 16" 32 – 32" 40 – 40"	DP – Deep WD – Wide AD – Adjustable	L3 – 15W	27 – 2700K 30 – 3000K 35 – 3500K 40 – 4000K	FE – Ferrite Dark Grey HB – Heritage Brown BZ – Bronze WT – White Textured BT – Black Textured SG – Sandstone Grey RAL – <a href="#">Custom RAL</a>
8 - OPTIONAL		9 - MOUNTING	10 - INSTALLATION			
— — Blank no option		<a href="#">Ground Anchor Base</a> <i>See section for details</i>	<a href="#">J-Box with sleeve</a> <i>See section for details</i>			
EM <sup>1</sup> — Emergency Battery Pack		<a href="#">Plate for Surface Installation</a> <i>See section for details</i>				
MS <sup>B</sup> — Motion Sensor						
MG <sup>A</sup> — Marine Grade						

<sup>B</sup>Not compatible with 16in version.

<sup>A</sup> Marine Grade is recommended for use in environments with occasional exposure to salt air, reclaimed water, fertilizers, chemical cleaners, or frequent pressure washing (steam) cleaning. Fixture housing complete with marine grade cataphoresis suitable for use in marine grade environments. Not to be in direct contact with salt or corrosive agents for extended periods of time.

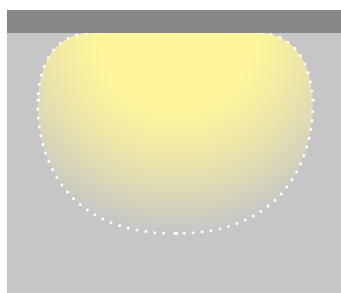
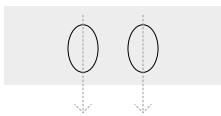
## OPTIC VERSIONS



ZEDGE PRO has a unique optical system composed of two independent beams that can be configured in different ways to create multiple effects. A DEEP version for deep lighting, a WIDE version for greater uniformity of the light in a longitudinal direction and an ADJUSTABLE version where the optical system is positioned on a special bezel that makes it possible to achieve the two most extreme configurations Deep and Wide, as well as all the points in between depending on different needs. A true pathway luminaire!

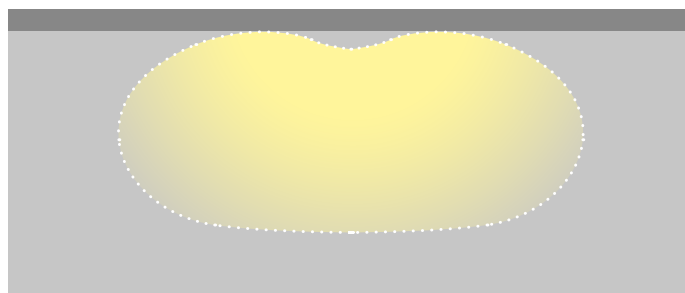
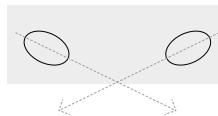
### (DP) DEEP

For deep lighting of horizontal surfaces where the priority is to light open spaces or wide pathways.



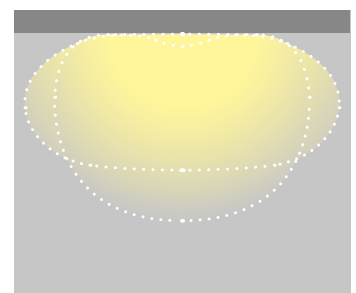
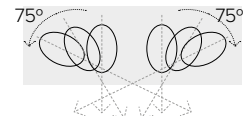
### (WD) WIDE

For lighting where illuminance uniformity is essential, long walkways with wide spacing between fixtures.



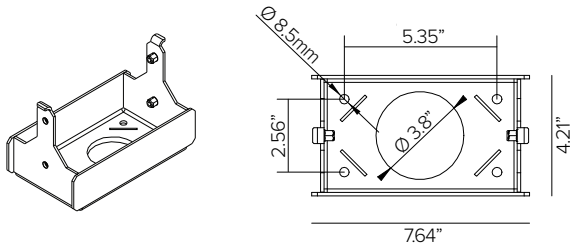
### (AD) ADJUSTABLE

Why be limited to just one optic? The adjustable optic fluidly adjusts between DEEP to a WIDE to precisely achieve the desired illumination effect.



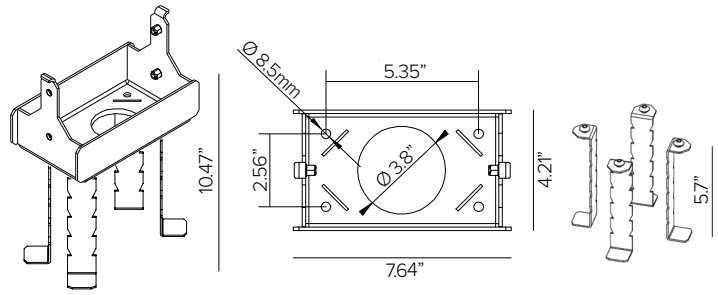
# ZEDGE PRO BOLLARD

## 2 – MOUNTING (REQUIRED)



Trimless mounting base with ground anchor fixing rods for installation in concrete. AISI 316 stainless steel. Mounting bolts  $\varnothing$  8.5mm (1/4") included, 4pcs. **Required for use with 1US2530 by NEC.**

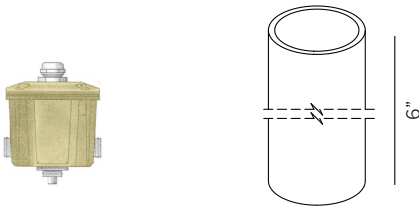
Part No. **1US34501**



Trimless mounting base with ground anchor fixing rods for installation in concrete. AISI 316 stainless steel. Mounting bolts  $\varnothing$  8.5mm (1/4") included, 4pcs. **Required for use with 1US2530 by NEC.**

Part No. **1US34502**

## INSTALLATION (REQUIRED)



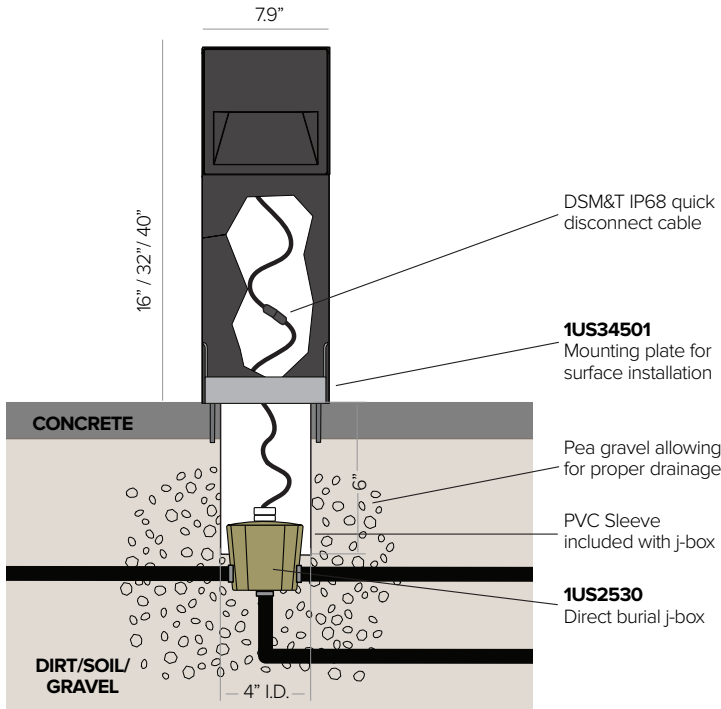
Direct burial brass in-grade j-box with PVC sleeve. Features stainless steel cover screws and strain relief for power cord, (2) 3/4" NPT bottom holes and (2) 3/4" NPT side holes. Includes (4) 3/4" to 1/2" adapters and (2) 1/2" NPT plugs. **(REQUIRED by NEC).**

Part No. **1US2530**

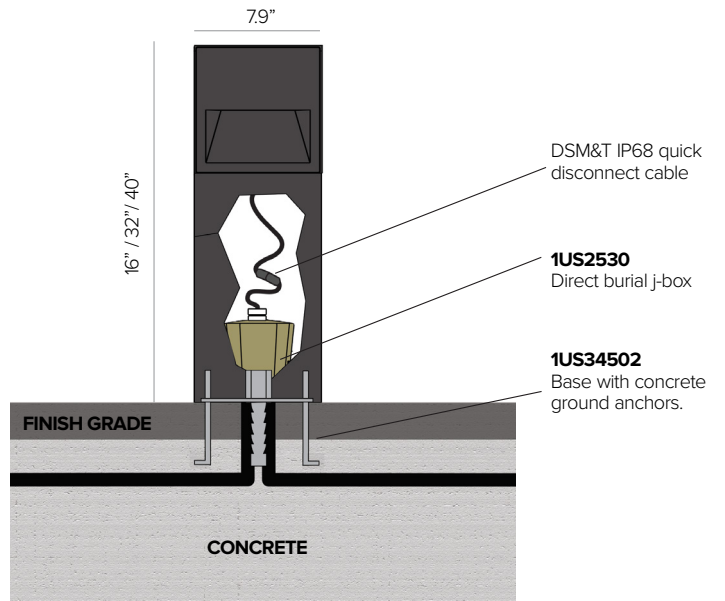
# ZEDGE PRO BOLLARD

## INSTALLATION DIAGRAM

1US34501 – SURFACE INSTALLATION

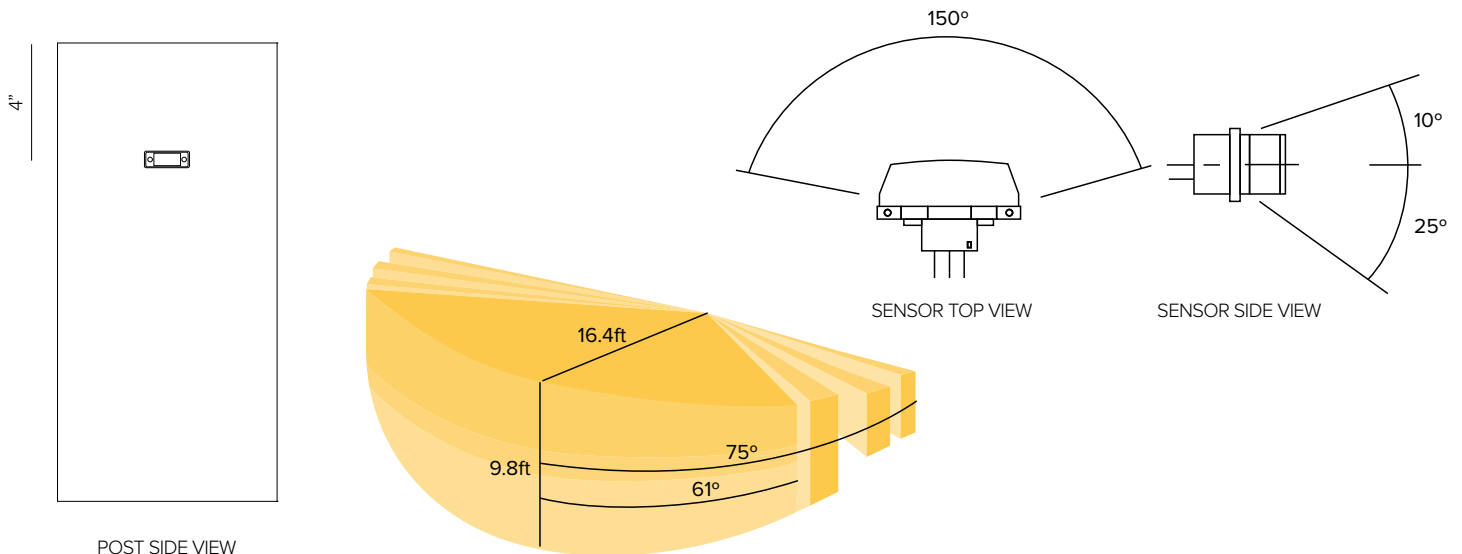


1US34502 – CONCRETE POUR INSTALLATION



**NOTE:** Install according to local and NEC building codes. UL listed j-box supplied by others.

## MOTION SENSOR DETAILS



# ZEDGE PRO BOLLARD

## PHOTOMETRY

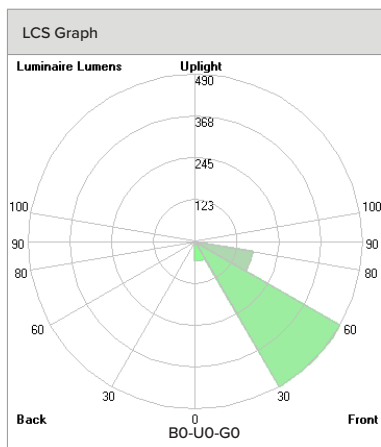
### DEEP

	2700K	H(m)	D1(m)	D2(m)	E <sub>max</sub> (lx)	
	Ra80		44°	53°		
	Fixture Power	15W	1	2.06	1.38	551
	Source Flux	2022lm	2	4.11	2.77	138
	Fixture Flux	693lm	3	6.17	4.15	61
	Efficacy	48lm/W	4	8.23	5.53	34
	TS1076 I <sub>max</sub> =489cd/klm	I <sub>max</sub>	989cd	5	10.29	6.92

	3000K	H(m)	D1(m)	D2(m)	E <sub>max</sub> (lx)	
	Ra80		44°	53°		
	Fixture Power	15W	1	2.06	1.38	578
	Source Flux	2123lm	2	4.11	2.77	145
	Fixture Flux	728lm	3	6.17	4.15	64
	Efficacy	50lm/W	4	8.23	5.53	36
	TS1076 I <sub>max</sub> =489cd/klm	I <sub>max</sub>	1038cd	5	10.29	6.92

	3500K	H(m)	D1(m)	D2(m)	E <sub>max</sub> (lx)	
	Ra80		44°	53°		
	Fixture Power	15W				
	Source Flux	2130lm				
	Fixture Flux	731lm				
	Efficacy	50lm/W				
	TS1076 I <sub>max</sub> =489cd/klm	I <sub>max</sub>	1042cd			

	4000K	H(m)	D1(m)	D2(m)	E <sub>max</sub> (lx)	
	Ra80		44°	53°		
	Fixture Power	15W	1	2.06	1.38	593
	Source Flux	2179lm	2	4.11	2.77	148
	Fixture Flux	747lm	3	6.17	4.15	66
	Efficacy	52lm/W	4	8.23	5.53	37
	TS1076 I <sub>max</sub> =489cd/klm	I <sub>max</sub>	1065cd	5	10.29	6.92



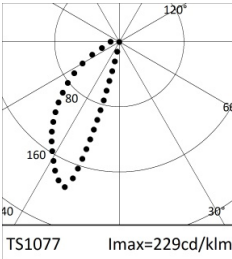
# ZEDGE PRO BOLLARD

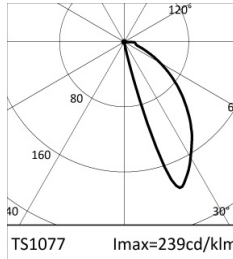
## PHOTOMETRY

### WIDE

	2700K	H(m)	D1(m)	D2(m)	E <sub>max</sub> (lx)		
	Ra80	32° 105°					
	Fixture Power	15W	1	0.82	2.79	327	
	Source Flux	2022lm	2	1.63	5.58	82	
	Fixture Flux	465lm	3	2.45	8.38	36	
	Efficacy	32lm/W	4	3.27	11.17	20	
	TS1077	I <sub>max</sub> =239cd/klm	I <sub>max</sub>	484cd	5	4.09	13.96

	3000K	H(m)	D1(m)	D2(m)	E <sub>max</sub> (lx)		
	Ra80	32° 105°					
	Fixture Power	15W	1	0.82	2.79	343	
	Source Flux	2123lm	2	1.63	5.58	86	
	Fixture Flux	488lm	3	2.45	8.38	38	
	Efficacy	34lm/W	4	3.27	11.17	21	
	TS1077	I <sub>max</sub> =239cd/klm	I <sub>max</sub>	508cd	5	4.09	13.96

	3500K				
	Ra80				
	Fixture Power	15W			
	Source Flux	2130lm			
	Fixture Flux	479lm			
	Efficacy	33lm/W			
	TS1077	I <sub>max</sub> =229cd/klm	I <sub>max</sub>	488cd	

	4000K	H(m)	D1(m)	D2(m)	E <sub>max</sub> (lx)		
	Ra80	32° 105°					
	Fixture Power	15W	1	0.82	2.79	353	
	Source Flux	2179lm	2	1.63	5.58	88	
	Fixture Flux	501lm	3	2.45	8.38	39	
	Efficacy	35lm/W	4	3.27	11.17	22	
	TS1077	I <sub>max</sub> =239cd/klm	I <sub>max</sub>	521cd	5	4.09	13.96

