

# Embrace

**TMSLIGHTING**

ESTABLISHED 1923



## Features

- Several sizes, output and CCT available for application and design flexibility
- Can be configured with multiple units, at varying height, for higher output and artistic appeal
- Projects a general diffuse pattern with excellent uniformity and coverage
- Surge suppressor protects the internal components
- Optional 0-10V (current sinking) dimming without color shifting
- Cool operation for extended component life

## Applications

Embrace complements modern architecture best, in areas where an uplifting appearance is required. Some areas include entertainment venues, lobbies, reception areas, hallways, and meeting areas.

## Construction

The body and canopy are formed with high grade steel. The diffuser is formed with acrylic. Available in sizes of 24" (610 mm), 36" (914 mm), 48" (1.219 m), 60" (1.524 m), and 72" (1.829 m) diameter.

## LED

Operates with 24W, 45W, 60W, 72W, or 90W Cree™ LED, 80CRI.

Specify 3000K, 3500K, or 4000K CCT.

## Diffuser

The diffuser is formed with UV-stabilized white acrylic.

## Dimming

0-10V current-sinking dimming, with pulse width modulation (PWM), to ensure consistent color through dimming phases.

Note: Use a current-sinking dimming system (by others) with this option. The compatibility of this product is not guaranteed with all control systems.

## LED Driver

The LED source is controlled by an advanced, electronic driver that delivers consistent power.

## Surge Suppressor

All 120V, 277V, and universal voltage LED luminaires are equipped with an integral, 6kV surge suppressor.

## Mounting

Supplied with adjustable aircraft cables with maximum suspension of 120" (3.048 m). Mount on a ceiling, directly to a standard 4" electrical junction box with 3.5" holes c-c.

Follow the installation instructions, and adhere to your local electrical code.

## Finish

Available in polyester powder-coated finishes or custom RAL colors. See the Finishes and Diffusers chart.

## Compliances

Rated IP20 for use in dry, indoor locations. QPS-C/US, or UL-C/US certified to UL1598 standards. The Consultants Europe (CE) listing is available upon request.



**IP20 CE**



# Embrace

**TMSLIGHTING**

ESTABLISHED 1923

6050

1 2 3 4 5 6 7 8

Project: \_\_\_\_\_  
Type: \_\_\_\_\_  
Quantity: \_\_\_\_\_

Notes:

## 1 • Diameter

24: 24" (610 mm) dia.  
36: 36" (914 mm) dia.  
48: 48" (1219 mm) dia.  
60: 60" (1524 mm) dia.  
72: 72" (1829 mm) dia.

## 2 • Lamping

60LED: 60W LED (24" dia. only)  
105LED: 105W LED (36" dia. only)  
152LED: 152W LED (48" dia. only)  
186LED: 186W LED (60" dia. only)  
238LED: 238W LED (72" dia. only)  
Note: All LED sources render at CRI 80.

## 3 • Voltage

120: 120V  
277: 277V

## 4 • LED CCT (color temp.)

30K: 3000K  
35K: 3500K  
40K: 4000K

## 5 • Cord

BC: Black drop cord  
WC: White drop cord

## 6 • Finish

F05: White  
F09: Pewter  
F10: Fire Red  
F15: Matte black  
F16: Gloss black  
F19: Mirror silver  
F24: Melted platinum (textured)  
F25: Melted gold (textured)  
F26: Melted copper (textured)  
F31: Silver metallic  
F32: Bronze metallic  
F33: Pyrite bronze  
RAL: RAL custom color (specify)

## 7 • Diffuser

OP: Opal-white Acrylic

## 8 • Dimming

—: None  
DIML: 0-10V Dimming (1%)  
**Note:** Use a current-sinking dimming system (by others) with this option. The compatibility of this product is not guaranteed with all control systems.

**Note:** Some options may not be compatible with others. To ensure compatibility, please visit [tmslighting.com](http://tmslighting.com), on the "configure" page of this luminaire, and use the configuration tool.

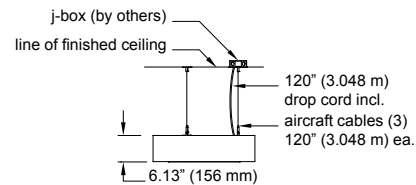


# Embrace

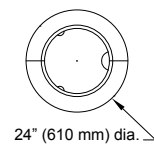
**TMS**LIGHTING

ESTABLISHED 1923

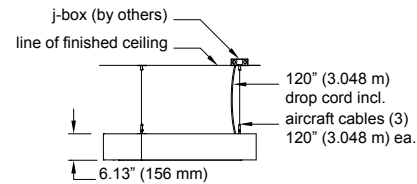
**6050-24**



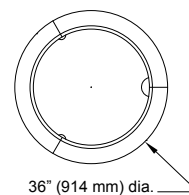
bottom



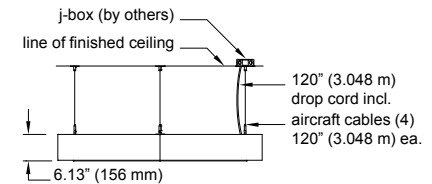
**6050-36**



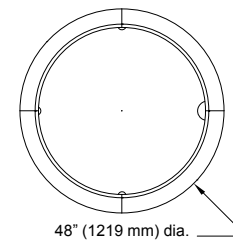
bottom



**6050-48**



bottom



## Custom

TMS Lighting can customize this and many of our standard fixtures. The dimensions, lamp types, enclosure and colors could be modified to suit your lighting and architectural requirements. Contact your local representative for more details: <http://tmslighting.com/info/agents>.

Specifications are subject to change without notice.

## TMS Lighting Inc.

247A Summerlea Road,  
Brampton, Ontario,  
Canada. L6T 4E1

**Web Site:** [tmslighting.com](http://tmslighting.com)

**North America:** (905) 793-1174

**Toll-free:** (866) 793-1174

**Fax:** (905) 793-1175

**UK & Europe:** 44-1474-250-654

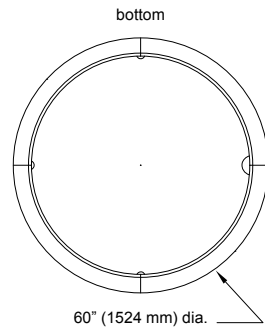
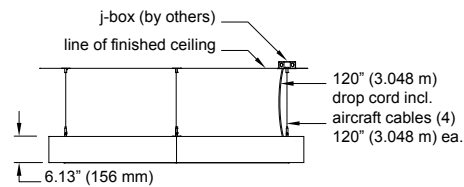


# Embrace

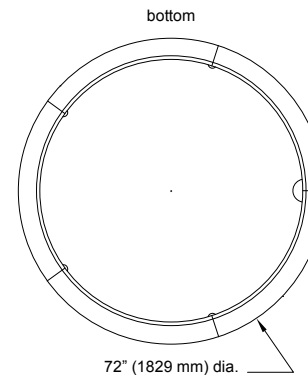
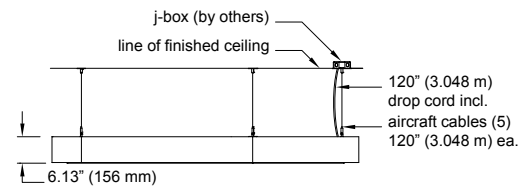
**TMS**LIGHTING

ESTABLISHED 1923

**6050-60**



**6050-72**



## Custom

TMS Lighting can customize this and many of our standard fixtures. The dimensions, lamp types, enclosure and colors could be modified to suit your lighting and architectural requirements. Contact your local representative for more details: <http://tmslighting.com/info/agents>.

Specifications are subject to change without notice.

## TMS Lighting Inc.

247A Summerlea Road,  
Brampton, Ontario,  
Canada. L6T 4E1

**Web Site:** [tmslighting.com](http://tmslighting.com)

**North America:** (905) 793-1174

**Toll-free:** (866) 793-1174

**Fax:** (905) 793-1175

**UK & Europe:** 44-1474-250-654