

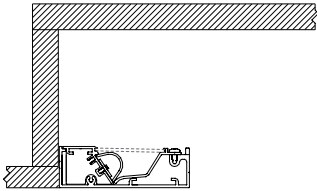
Mini Box Cove

Straight Run Submittal

Project Name _____ SO # _____

Fixture Type _____ PO# _____


1.2"
30mm

3.7"
94mm


Architectural Cove

4" minimum offset, 12" typical offset.

Can be installed in Cove or Coffer.

Ordering Information

WG-MBC	SM								
Model	Fixation	Pattern	Length	Power ³	CRI/ CCT ⁴	Driver ⁵	Lens	Finish	Options
WG-MBC	SM	S ¹	A A x B A x B x C A x B x A x B	L M H	927 930 935 940	X S D010 L3DAE L3DOE DFPN	SSD (std) SDC	W (std) B G F	LEC REC LREC

Luminaire

- Light source positioned for optimum horizontal spread of illumination.
- Light source is not visible from any viewing angle up to and including direct horizontal view.
- Delivers continuous soft wash of directed light to above surface.
- Satin Diffuser for high efficiency and soft edge beam without striations.
- Removable light source sub assembly for simple installation and maintenance.
- High efficiency linear LED in a range of outputs.
- Integral drivers and through wiring.
- Lengths and angles factory cut to exact field dimensions.
- Mitered corners available with continuous illumination.

Fixation

- SM = Surface mount

Pattern

- S = Straight run¹
- PC = Standard patterns coffer 2, 3 or 4 sided with 90° corners²
- PR = Standard patterns raft 2, 3 or 4 sided with 90° corners²
- PZ = Non-standard patterns and/or corners other than 90°, consult factory²

Length

- A, B, C = specify inches to the nearest 0.25" (i.e. 72.25") For patterns specify each length (i.e. 2 sided: A x B = 72.25" x 48"; 3 sided: A x B x C; 4 sided: A x B x A x B)

LED³

- L = 3.2W/ft low power (24V)
- M = 6.4W/ft medium power (24V)
- H = 10.5W/ft high power (24V)

Customer Approval		Company _____
<input type="checkbox"/> Approved	Signature _____	
<input type="checkbox"/> Approved corrections noted	Print Name _____	
<input type="checkbox"/> Revise and Resubmit	Date _____	

Original Submission Date _____

Color / Lumens⁴

90+ CRI minimum (Low/Mid/High)

- 927 = 2700K, (243/450/671 lm/ft)
- 930 = 3000K, (251/464/692 lm/ft)
- 935 = 3500K, (256/474/706 lm/ft)
- 940 = 4000K, (259/478/713 lm/ft)

Driver (remote)⁵

- X = No driver, ordered separately
- S = Standard driver 120-277V
- D010 = Osram, 10%, 0-10V dimming, 120-277V
- L3DAE = Lutron Hi-lume 1% EcoSystem, 120-277V
- L3DOE = Lutron Hi-lume Premier 0.1% EcoSystem, 120-277V
- DFPN = Lutron Forward Phase 1%, 120VAC

Lens

- SSD = Snap On Satin Diffuser (standard)
- SDC = Satin Clear Dust Cover

Finish

- W = White, 20% gloss, RAL9010 (standard)
- B = Black, 20% gloss
- G = Gray, 20% gloss
- F = Custom finished trim, specify RAL

Options

- LEC = Left end cap
- REC = Right end cap
- LREC = Left & Right end caps

Emergency

- Emergency LED driver available, order separately.

- Standard setup assumes the cove ends at a perpendicular wall and the LED board is setback from the end to minimize light on the perpendicular wall. Contact us for options
- See pattern spec sheet.
- Wattage shown does not include power supplies/drivers.
- Delivered lumens with snap on satin diffuser shown.
- Remote drivers required. See power supply page for details.

Mini Box Cove LED

Submittal - Straight Run

Project Name _____ SO # _____

Fixture Type _____ PO# _____

System	Qty.	Overall Length 'A'
1	_____	_____
2	_____	_____
3	_____	_____
4	_____	_____
5	_____	_____
6	_____	_____
7	_____	_____
8	_____	_____
9	_____	_____
10	_____	_____

Customer Approval

Company _____

☐ Approved

Signature _____

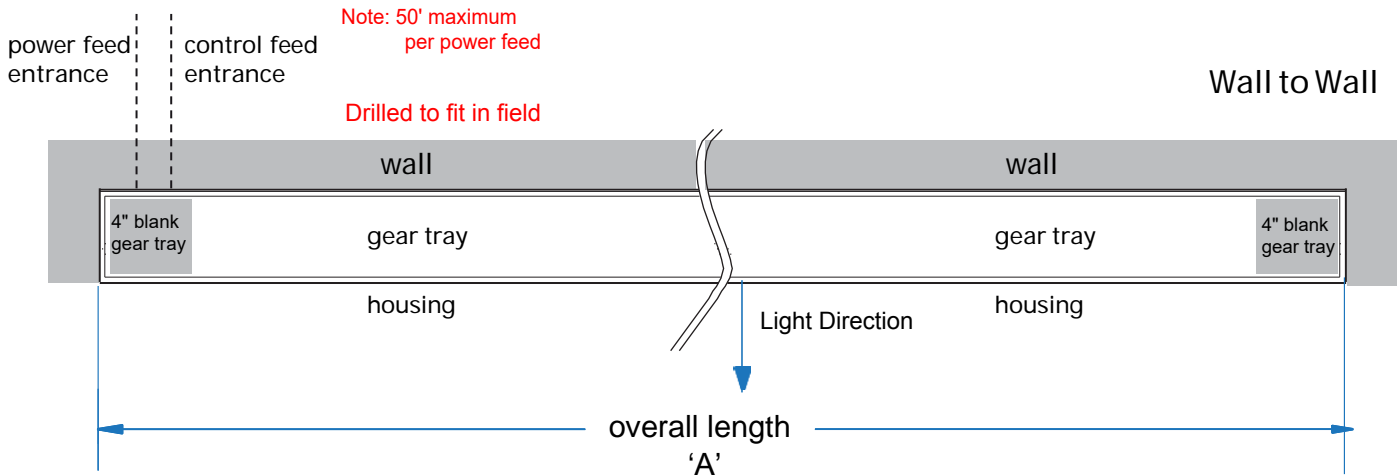
☐ Approved with corrections noted

Print Name _____

☐ Revise and Resubmit

Date _____

*overall length of finished mounting surface



4" blank gear tray will not be illuminated.
Intended to reduce hot spot on adjacent wall.

