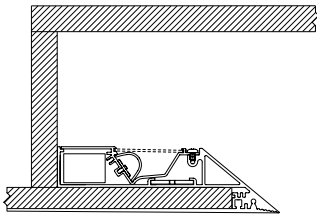
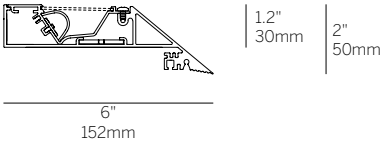
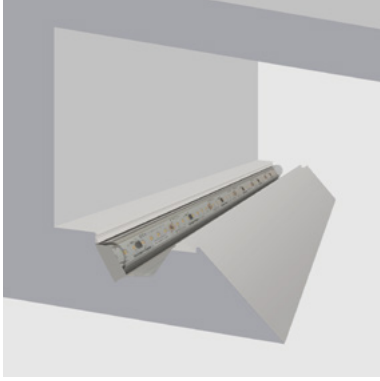


Mini Edgeless Cove



Gypsum Ceiling Mounting
4" minimum offset, 12" typical offset
Can be installed in Cove or Coffered

Ordering Information

Model	Fixation	Pattern	Length	Power ³	CRI/CCT ⁴	Driver ⁵	Lens	Finish	Options
WG-MEC	RPT	S ¹ PC ² PR ² PZ ²	A A x B A x B x C A x B x A x B	L M H XH	927 930 935 940	X S D010 L3DAE L3DOE DFPN	SSD (std) SDC	W (std) F	LEC REC LREC LWR RWR

Luminaire

- Light source positioned for optimum horizontal spread of illumination.
- Light source is not visible from any viewing angle up to and including direct horizontal view.
- Delivers continuous soft wash of directed light to above surface.
- Satin Diffuser for high efficiency and soft edge beam without striations.
- Removable light source sub assembly for simple installation and maintenance.
- High efficiency linear LED in a range of outputs.
- Integral drivers and through wiring.
- Lengths and angles factory cut to exact field dimensions.
- Mitered corners available with continuous illumination.

Fixation

- RPT = Recessed plaster trim

Pattern

- S = Straight run¹
- PC = Standard patterns coffer 2, 3 or 4 sided with 90° corners²
- PR = Standard patterns raft 2, 3 or 4 sided with 90° corners²
- PZ = Non-standard patterns and/or corners other than 90°, consult factory²

Length

- A, B, C = specify inches to the nearest 0.25" (i.e. 72.25") For patterns specify each length (i.e. 2 sided: A x B = 72.25" x 48"; 3 sided: A x B x C; 4 sided: A x B x A x B)

Power³

- L = 3W/ft low power (24V)
- M = 6W/ft medium power (24V)
- H = 10W/ft high power (24V)
- XH = 13W/ft extra high power (24V)

CRI/CCT⁴

- 90+ CRI minimum (Low/Mid/High/Extra High)
- 927 = 2700K, (276/552/920/1196 lm/ft)
 - 930 = 3000K, (276/552/920/1196 lm/ft)
 - 935 = 3500K, (282/563/938/1220 lm/ft)
 - 940 = 4000K, (282/563/938/1220 lm/ft)

Driver (remote)⁵

- X = No driver, ordered separately
- S = Standard driver 120-277V
- D010 = Osram, 10%, 0-10V dimming, 120-277V
- L3DAE = Lutron Hi-lume 1% EcoSystem, 120-277V
- L3DOE = Lutron Hi-lume Premier 0.1% EcoSystem, 120-277V
- DFPN = Lutron Forward Phase 1%, 120VAC

Lens

- SSD = Snap On Satin Diffuser (standard)
- SDC = Satin Clear Dust Cover

Finish

- W = White, 15% gloss, RAL9010 (standard)
- F = Custom finish, specify RAL

Options

- LEC = Left end cap
- REC = Right end cap
- LREC = Left & Right end caps
- LWR = Left wall return
- RWR = Right wall return

Emergency Remote Only

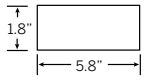
- Emergency LED battery backup available, order separately.

- 1 Standard setup assumes the cove ends at a perpendicular wall and the LED board is setback from the end to minimize light on the perpendicular wall. Contact us for options.
- 2 See pattern specsheet.
- 3 Wattage shown does not include power supplies/drivers.
- 4 Delivered lumens with snap on satin diffuser shown.
- 5 Remote drivers required. See power supply page for details.

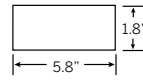
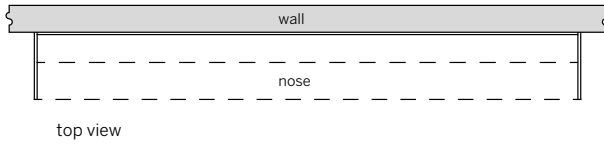
Mini Edgeless Cove

End Cap Details

End Caps

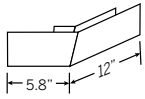


WG-MEC-LEC:
Left End Cap*

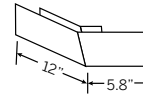
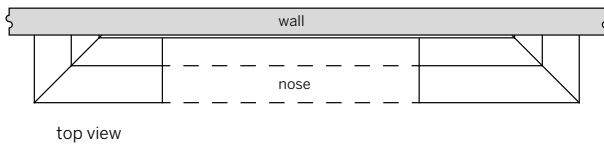


WG-MEC-REC:
Right End Cap*

End Returns



WG-MEC-LWR:
Left End Wall Return*



WG-MEC-RWR:
Right End Wall Return*