



FCB459



Date:

Type:

Fixture:

Project:

Approved:

FCB459 Exterior die-cast aluminum, 9" diameter low profile ground lighting bollard. Designed and built to provide broad pathway lighting emanating from a low height. Ideal for marine and other locations requiring broad light coverage.

SPECIFICATIONS

EOL

PHYSICAL

lengths/dimensions	9.6"H x 9.4"Dia.
weight	8 lbs
housing	marine grade, corrosion resistant, heavy guage aluminum
lens	impact resistant, UV stabilized, clear polycarbonate diffuser
mounting	heavy gauge base bracketing for bollard installation provides a unique mounting solution, so the tower body anchors flush to the ground without the appearance of a base plate, anchor bolts included (j-box by others)
ingress protection	IP66: dry, damp, or wet locations with extruded silicone gasket to seal out contaminants
finish	Six stage chemical iron phosphate conversion pre-treatment. Polyester powder coat finish, 18 µm Min., 5000hr salt spray test (ASTM B117) compliant with Florida / AAMA 2604 specification.

PERFORMANCE

color temperature	2700K	3000K	3500K	4000K	
lumen output	550 lm				
lifetime	> 70,000 hours / L70 or better				
color consistency	3 SDCM / 85 CRI				
operating temperature	-13°F to 104°F (-25°C to 40°C)				
junction temperature	73°C @ T ^A 25°C				
warranty	5-Year limited warranty (refer to website for details)				

ELECTRICAL

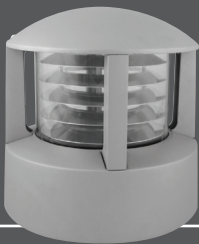
input voltage	Universal 120-277V AC optional: 347V AC (remote)
power supply	integral
certification	ETL/cETL Listed, CEC Title 24 JA8 compliant
standards	UL1598 / CSA C22.2 No. 250.0; UI 8750 / CSA C22.2 No. 250.13 / IES LM-79 / LM-80
power consumption	14W @ 120V - 277V
dimming	standard: 0-10V (1%) optional: ELV (120V only) / DMX (remote)/DALI (remote)

Due to continuous development and improvements, specifications are subject to change without notice. FC Lighting reserves the right to change lab test details or specifications without notice. Product use certifies agreement to FC Lighting terms and conditions.



US Commercial Lighting Manufacturer Since 1982

Specification Sheet

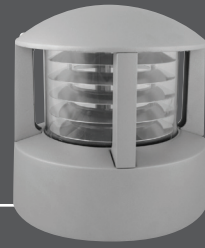


Ordering Information

ORDERING INFORMATION											
FCB459											
SERIES	VOLTAGE		HEIGHT		CCT		LUMENS		FINISH		OPTIONS
FCB459	UNV	UNV 120V-277V	10	10"	27K	2700K	5L	550 lm (14W)	BK	Black	LD LED Dimming (0-10V) standard
	347V	347V AC (remote)			3K	3000K			BZ	Bronze	ELV ELV Dimming (120 only)
					35K	3500K			SL	Silver	BBUR Battery Backup, Remote
					4K	4000K			WH	White	DMX DMX Dimming (remote)
									CC	Custom Color	DALI DALI Dimming (remote)

Due to continuous development and improvements, specifications are subject to change without notice. FC Lighting reserves the right to change lab test details or specifications without notice. Product use certifies agreement to FC Lighting terms and conditions.

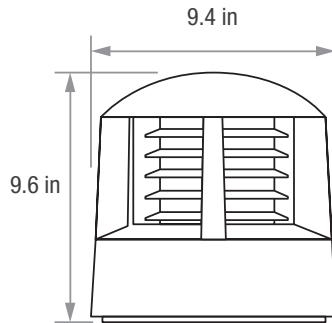




Physical

PRODUCT DIMENSIONS - STANDARD PRODUCT

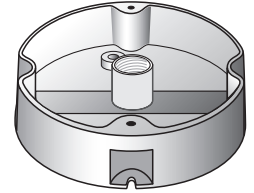
height	9.6" H
diameter	9.4" Dia



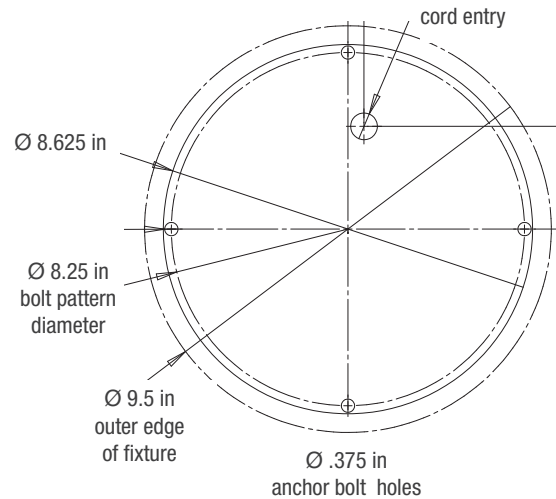
MOUNTING

mounting plate diameter	8.625" Dia
anchor bolt size	3/8" Ø x 12" L x 2" Tang
bolt pattern diameter	8.25" Dia

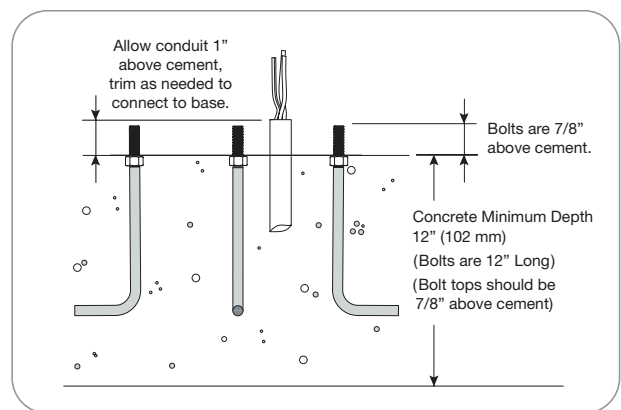
Anchor Bolt Part #	94523B-4
Quantity Required	4 for each bollard



mounting hole pattern



Concrete minimum depth 12"; 12" anchor bolts extend above cement, see installation instructions for detailed information.



Due to continuous development and improvements, specifications are subject to change without notice. FC Lighting reserves the right to change lab test details or specifications without notice. Product use certifies agreement to FC Lighting terms and conditions.