

## FCB460A



Wildlife Lighting Certified  
by the Florida Fish & Wildlife  
Conservation Commission



**Date:**

**Type:**

**Fixture:**

**Project:**

**Approved:**

**FCB460A** Exterior 316 stainless steel and die-cast aluminum bollard. Round 8-inch diameter and 43" tall, louvered bollard with optional house shield for 180° or 270° cut off. Certified by the Florida Fish & Wildlife Conservation Commission as approved for Wildlife Lighting in areas with protected environments. Designed and built to provide downward directed light completely surrounding the luminaire, or optionally, internally shielded to 180° or 90° light pattern.

### SPECIFICATIONS

#### PHYSICAL

<b>dimensions</b>	43"H x 8"Dia. Ø
<b>weight</b>	25 lbs
<b>housing</b>	Marine grade 316 stainless steel housing
<b>lens</b>	Clear, heat resistant, tempered glass globe
<b>mounting</b>	Heavy gauge base bracketing for bollard installation provides a unique mounting solution, so the tower body anchors flush to the ground without the appearance of a base plate, anchor bolts included (j-box by others)
<b>ingress protection</b>	IP66: dry, damp, or wet locations with extruded silicone gasket to seal out contaminants
<b>finish</b>	Marine grade 316 stainless steel housing

#### PERFORMANCE

<b>color temperature</b>	AMBER (no light below 560nm wavelength)
<b>lumen output</b>	128 lm
<b>lifetime</b>	> 70,000 hours / L70 or better
<b>color consistency</b>	3 SDCM / Standard: 85 CRI
<b>operating temperature</b>	-13°F to 104°F (-25°C to 40°C)
<b>junction temperature</b>	73°C @ T <sup>a</sup> 25°C
<b>warranty</b>	5-Year limited warranty (refer to website for details)

#### ELECTRICAL

<b>input voltage</b>	Universal 120-277VAC   optional: 347 VAC (integral)   480 VAC (integral)
<b>power supply</b>	Integral Class II, electronic high-power factor > 94% @120V
<b>certification</b>	ETL / cETL Listed; Wildlife Friendly Lighting Certification #2018-049
<b>standards</b>	UL 1598 / CSA C22.2 No. 250.0 - Class II / IES LM-79 / LM-80
<b>power consumption</b>	35W @ 120V - 277V (maximum)
<b>dimming</b>	Standard: 0-10V (1%)



Due to continuous development and improvements, specifications are subject to change without notice. FC Lighting reserves the right to change lab test details or specifications without notice. Product use certifies agreement to FC Lighting terms and conditions.



# Ordering Information

## ORDERING

FCB460A		43	AM	1L	SS	
SERIES	VOLTAGE	HEIGHT	CCT	LUMENS	FINISH	OPTIONS
FCB460A	<b>120V</b>	120 Volts	<b>AM</b> Amber	<b>1L</b> 128 lm (35W)	<b>SS</b> Stainless Steel	<b>LD</b> 0-10V Dimming
	<b>277V</b>	277 Volts				<b>PE120</b> Photo Eye for 120V
	<b>UNV</b>	Universal 120-277V				<b>PE277</b> Photo Eye for 277V
						<b>HS</b> 180° House Shield
						<b>HS2</b> 270° House Shield
						<b>BBUR</b> Battery Backup Remote
						<b>SP20</b> 20kv Surge Protector
						<b>SP20 w/ BBUR</b> Require two SP20 Surge Protectors

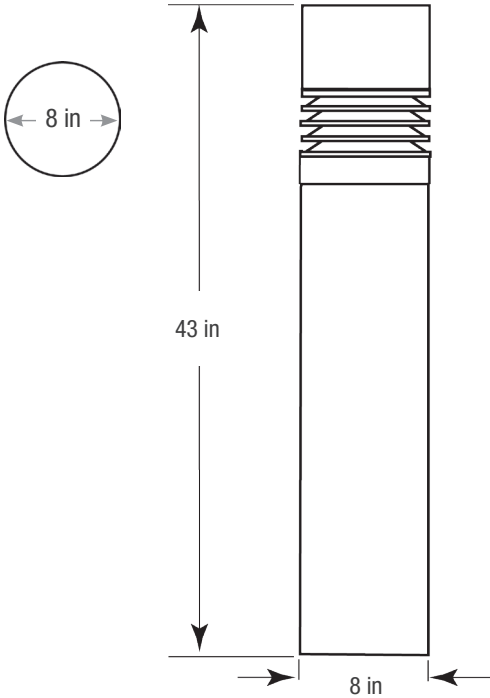
Due to continuous development and improvements, specifications are subject to change without notice. FC Lighting reserves the right to change lab test details or specifications without notice. Product use certifies agreement to FC Lighting terms and conditions.



Physical

PRODUCT DIMENSIONS - STANDARD PRODUCT

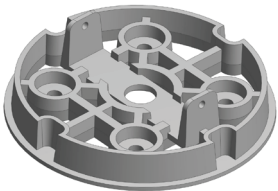
height	43" H
width	8" Ø W



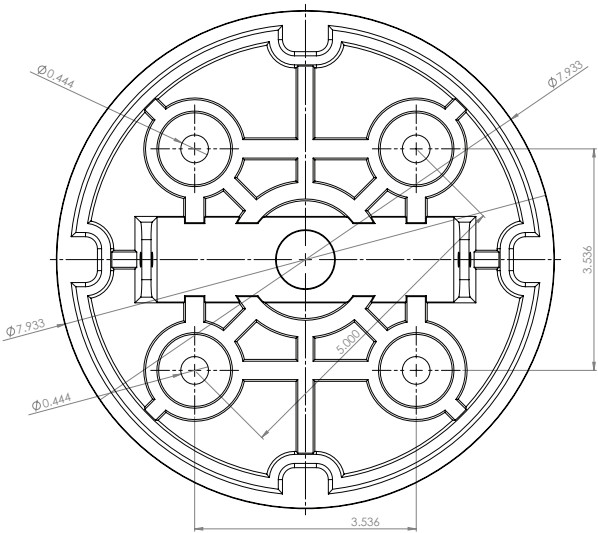
MOUNTING

mounting plate diameter	7.933" Dia Ø
-------------------------	--------------

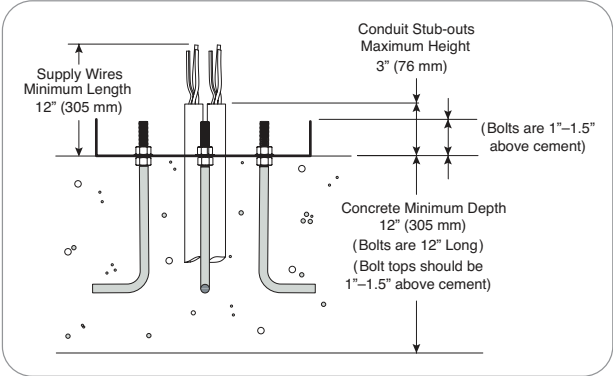
Anchor Bolt Part #	J10010
Quantity Required	4 for each bollard



mounting hole pattern



Concrete minimum depth 12"; 12" anchor bolts extend above cement, see installation instructions for detailed information.



Due to continuous development and improvements, specifications are subject to change without notice. FC Lighting reserves the right to change lab test details or specifications without notice. Product use certifies agreement to FC Lighting terms and conditions.

## OPTICAL DISTRIBUTION



## Specification Sheet