

FCBT690



Date:

Type:

Fixture:

Project:

Approved:

FCBT690 Exterior die-cast aluminum bollard with right angle head position tower. Available in 42" and 36" height. Designed and built to illuminate the ground and/or pathways safely without glare. **FCBT690** has an extremely wide-throw beam pattern covering 30'–35' wide and still measuring greater than 1 foot candle. It also has a forward throw of approximately 14 feet. Matches up with FCBT690S, 24" high version.

SPECIFICATIONS

PHYSICAL

dimensions	42"H or 36"H x 8"W x 9"D at top (3"D at base)
weight	12 lbs
housing	marine grade, corrosion resistant, heavy gauge aluminum
lens	impact resistant, UV stabilized, clear, polycarbonate diffuser
mounting	heavy gauge base bracketing for bollard installation provides a unique mounting solution, so the tower body anchors flush to the ground without the appearance of a base plate, anchor bolts included (j-box by others)
ingress protection	IP66: dry, damp, or wet locations with extruded silicone gasket to seal out contaminants
finish	Six stage chemical iron phosphate conversion pre-treatment. Polyester powder coat finish, 18 µm Min., 5000hr salt spray test (ASTM B117) compliant with Florida / AAMA 2604 specification.

PERFORMANCE

color temperature	2700K	3000K	3500K	4000K
lumen output offerings	479 lm	958 lm	1436 lm	1915 lm
lifetime	> 70,000 hours / L70 or better			
color consistency	3 SDCM / 85 CRI			
operating temperature	-49°F to 104°F (-45°C to 40°C)			
junction temperature	73°C @ T ^a 25°C			
warranty	5-Year limited warranty (refer to website for details)			

ELECTRICAL

input voltage	Universal 120-277VAC optional: 347 VAC (integral) 480 VAC (integral)
power supply	Integral Class II, electronic, high power factor > 94% @120V
certification	ETL/cETL Listed
standards	UL1598 / CSA C22.2 No. 250.0; UI 8750 / CSA C22.2 No. 250.13 / IES LM-79 / LM-80
power consumption	7W (479 lm) minimum, 26W (1915 lm) maximum
dimming	standard: 0-10V (10%) optional: ELV (120V only) / DMX (integral)/DALI (integral)

Due to continuous development and improvements, specifications are subject to change without notice. FC Lighting reserves the right to change lab test details or specifications without notice. Product use certifies agreement to FC Lighting terms and conditions. FCC Series Cylinder Lights are engineered and produced in our Illinois manufacturing facility.



Ordering Information

ORDERING INFORMATION

FCBT690																	
Series		Voltage		Height		CCT		Lumens		Finish		Options					
FCBT690	UNV	UNV 120V-277V		42	42"	27K	2700K		5L	479 lm (7W)		BK	Black		CD	Cane Detector	
	347V	347V AC (Integral)		36	36"	3K	3000K		10L	958 lm (13W)		BZ	Bronze		LD	0-10V Dimming (Standard)	
	480V	480V AC (Integral)				35K	3500K		14L	1436 lm (20W)		SL	Silver		ELV	ELV Dimming (120 Only)	
						4K	4000K		19L	1915 lm (26W)		WH	White		DMX	DMX Dimming (Integral)	
												CC	Custom Color		DALI	DALI Dimming (Integral)	
															SP20	20kV Surge Protector	
															BBU	Battery Backup, Integral (Not w/ ELV)	
														SP20-BBU	(2) 20kV Surge Protectors (1/LED driver, 1/BBU) and Battery Backup (Integral)		
															HS	180° House Shield	
															HS2	270° House Shield	

Consult Factory for other options and configurations.

To ensure you receive proper configurations for your lighting specifications, contact us directly about any unique application requirements. This may include but not be limited to lumen output, mounting needs, or electrical components.

Due to continuous development and improvements, specifications are subject to change without notice. FC Lighting reserves the right to change lab test details or specifications without notice. Product use certifies agreement to FC Lighting terms and conditions. FCC Series Cylinder Lights are engineered and produced in our Illinois manufacturing facility.



US Commercial Lighting Manufacturer Since 1982

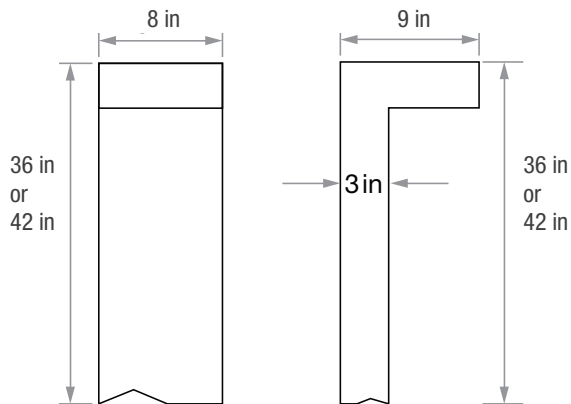
Specification Sheet

Physical



PRODUCT DIMENSIONS - STANDARD PRODUCT

height	42"H or 36"H
width	8" W
depth	9" D top
depth	3" D base

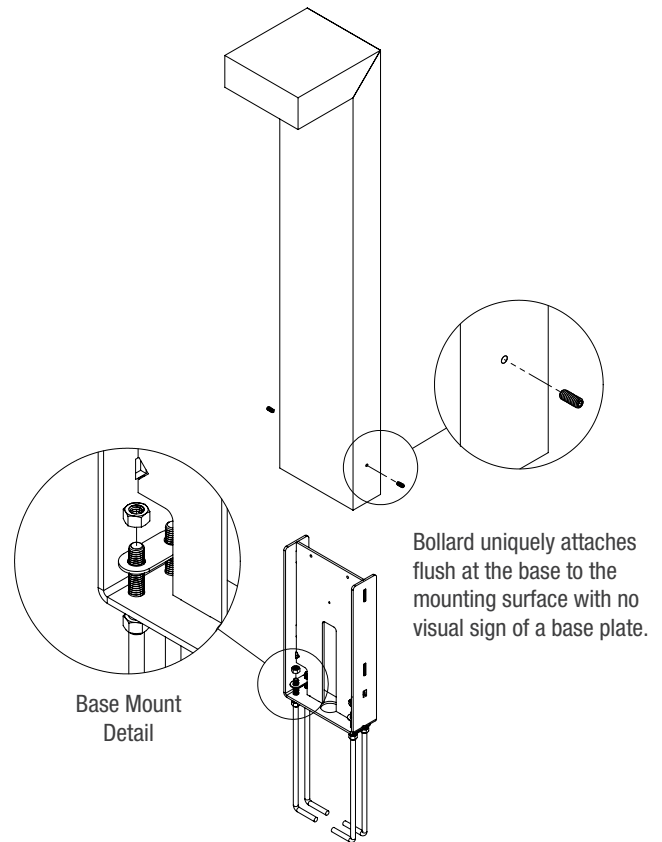
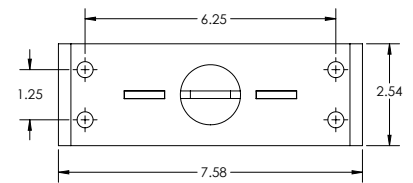


MOUNTING

mounting plate depth	3" D
mounting plate width	8" W
anchor bolt size	3/8"Ø x 12"L x 2" Tang

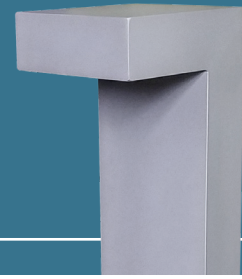
Anchor Bolt Part #	94523B-4
Quantity Required	4 for each bollard

mounting hole pattern

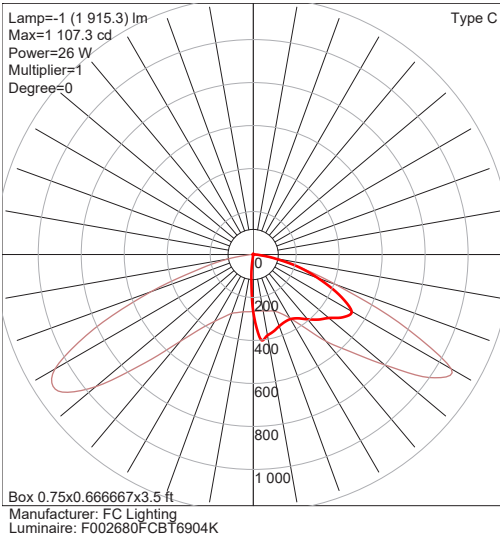


Due to continuous development and improvements, specifications are subject to change without notice. FC Lighting reserves the right to change lab test details or specifications without notice. Product use certifies agreement to FC Lighting terms and conditions. FCC Series Cylinder Lights are engineered and produced in our Illinois manufacturing facility.

Photometry & Accessories



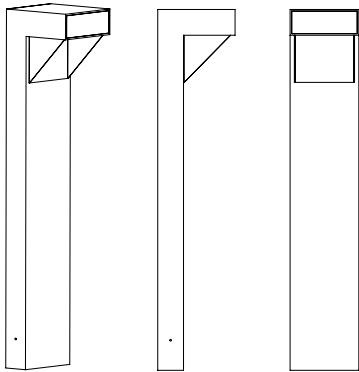
OPTICAL DISTRIBUTION



ACCESSORIES

FIND IES FILES ON FCLIGHTING.COM

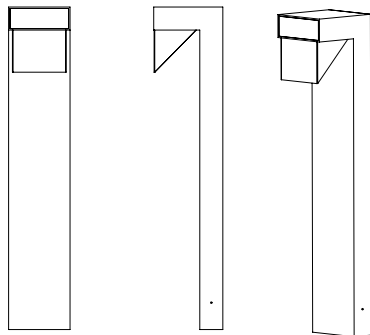
HS - House Shield that blocks light out the sides



Use the 180° House Side Shield (HS) to protect beach side areas where fixtures are installed.

HS Height: 5.5" H

HS2 - House Shield that blocks light out the front



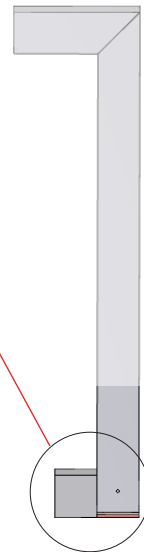
Use the (HS2) front House Shield to protect beach side areas where fixtures are installed.

HS Height: 5.5" H

CD - Cane Detector

foot depth	add 3" D at column base
foot width	8" W

**SHOWS FCBT690
W/ CANE DETECTION**



Due to continuous development and improvements, specifications are subject to change without notice. FC Lighting reserves the right to change lab test details or specifications without notice. Product use certifies agreement to FC Lighting terms and conditions. FCC Series Cylinder Lights are engineered and produced in our Illinois manufacturing facility.



US Commercial Lighting Manufacturer Since 1982

Specification Sheet