

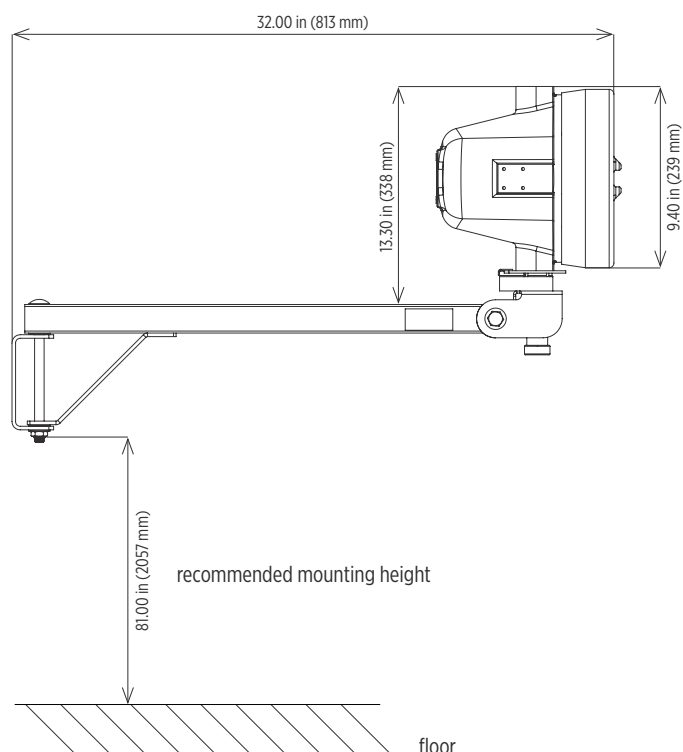
Explosion-proof LED task light rated for hazardous and wet locations

Maximum versatility with spot and flood optic options

For use in chemical plants, drilling rigs, refineries and other hazardous locations

LED technology increases efficiency, eliminates maintenance and supports green initiatives

Dimensions



Specifications

Construction	Corrosion-resistant, copper-free cast aluminum shell and cover
Finish	Yellow thermoset powder coat
Hardware	Zinc plated
Lens	¾ inch thick tempered glass
Arm	26.00 inch swing arm made from 1.50 inch square steel tube Swings horizontally up to 180°
Joints	Threaded joints between shell and cover
Head	Head rotates up to 230° horizontally and up to 74° vertically
Light source	Osram light emitting diodes (LED) 44W, up to 3800 lumens Conformal coated modules Flood (45°) and spot (28°) optics available CCT 5000K 50,000 hour rated life
Power source	120-277V, 50-60Hz Over-voltage, over-current and short-circuit protection Fully potted, replaceable (two per fixture)
Power factor	> 0.9
Wiring	6 feet (1.8 m) of wire Wire entrance is factory sealed
Ambient operating temperature	-20°C to +40°C
Mounting	3x5 inch zinc plated steel bracket
Weight	Packaged: 28.0 lb (12.7 kg)
Warranty	3 years

Compliances

ETL/cETL Certified to:

- UL 1598 Ordinary Locations
- UL 1598A Marine Outside Type (Saltwater)
- UL 844 Hazardous Locations
 - Class I, Division 1 Groups C & D
 - Class I, Division 2 Groups A, B, C & D
 - Class II, Divisions 1 & 2 Groups F & G
 - Class III, Divisions 1 & 2
- NEMA 4X

CSA C22.2 No. 250.0

T4A (120°C) Temperature Rating



Ordering Information

Example: DLXLED-FL-V2

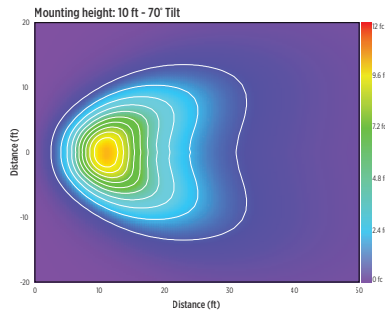
Fixture	Optic	Generation
DLXLED	FL SP	V2

Optic	Generation
FL 45° flood optic	V2 Version 2, Osram LEDs - standard
SP 28° spot optic	

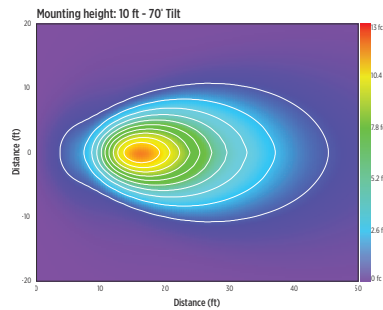
Special Projects: We may be able to accommodate your special projects, so please don't hesitate to ask about additional options. Minimum order quantities and/or extended lead times will apply. Contact your Phoenix representative with specific inquiries.

Isolux Charts

DLX LED - Flood



DLX LED - Spot



Product design and specifications are subject to change without notice. The most current version of this specification sheet can be found on our website: www.phoenixlighting.com.