

Designed to replace linear fluorescent fixtures and mid-power floodlights

For use on heavy equipment, conveyors, machine houses and other demanding applications

Compact, low profile design with various output levels and mounting options

LED technology increases efficiency, eliminates maintenance and supports green initiatives

### Key Applications

Hazardous locations	Offshore wind turbine lighting
Electric rope shovels	Emergency lighting
Machine house lighting	Passageways
Electrical room lighting	Draglines
Engine room lighting	Cargo holds

### Compliances

ETL/cETL Certified to:

- UL 1598 Suitable for Wet Locations
- UL 1598A Marine Outside Type (Saltwater)
- UL 844 Hazardous Location
  - Class I, Division 2 Groups A, B, C, D
  - Class I, Zone 2 Group IIC
  - T3C - 160°C maximum surface temperature
- CSA C22.2 No. 250.0
- CSA C22.2 No. 137

CE

ABS

IP67 rated

LM79 and LM80 reports available

### Specifications

<b>Construction</b>	Marine grade, extruded aluminum housing Marine grade, die cast aluminum end plates
<b>Finish</b>	Anodized finish on extruded parts Thermoset powder coat paint on die cast parts
<b>Hardware</b>	Marine grade (316) stainless steel
<b>Lens</b>	Diffuse polycarbonate (DP) - standard Clear polycarbonate lens (CP) accessory kit available



*This product complies with domestic preference requirements such as BAA or TAA. For additional information, visit [phoenixlighting.com](http://phoenixlighting.com) or consult your representative.*

### Specifications

<b>Light source</b>	HDL1 - 28W, 2850 lumens HDL2 - 55W, 5700 lumens HDL3 - 83W, 8550 lumens CCT 5000K LEDs - standard 50,000 hour rated life
<b>Power source</b>	120-277V, 50-60Hz (UNIV) 277-480V, 50-60Hz (277-480) option Fully potted, replaceable driver
<b>Power factor</b>	> 0.9 at 120V
<b>Surge protection</b>	20kV/kA
<b>Wiring</b>	Wire leads standard (connectors accept up to 12 AWG wire) 5 foot lead with 277V twist lock plug (TL-277) accessory available
<b>Through wiring</b>	Standard fixture is designed for continuous row mounting
<b>EMB</b>	Input power 120-277V, 50/60Hz 90 minute run time Approximately 1100 lumens 7 to 10 year battery life expectancy
<b>Ambient operating temperature</b>	-40°C to +50°C (non-EMB units) 0°C to +40°C (EMB units)
<b>Mounting</b>	Threaded plug and two cord grips provided accept cord diameters 0.25-0.375 inch Surface/conduit mount (SM) with ½ inch NPT outlets - standard Retrofit mounting brackets for Phoenix LFSB or RSL fixtures - sold separately Harp kits sold separately
<b>Weight</b>	HDL1 - 6.5 lb (3.0 kg) HDL2 - 11.0 lb (5.0 kg) HDL3 - 14.0 lb (6.4 kg)
<b>Warranty</b>	5 years

For IES files, see website or contact factory

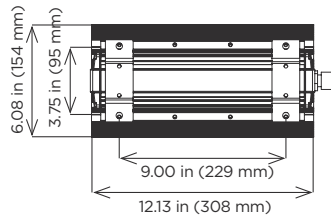
# HDL-LED Series

Heavy Duty Linear LED

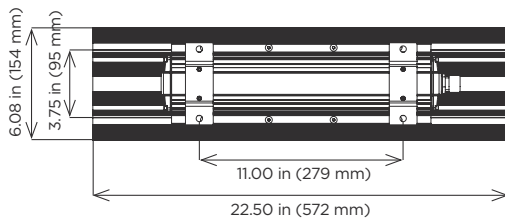
**PHOENIX**<sup>®</sup>  
DURABILITY X DESIGN™

## Dimensions

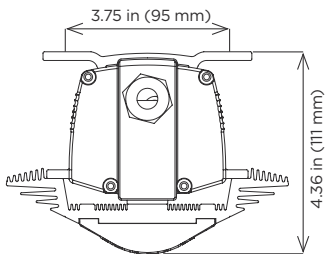
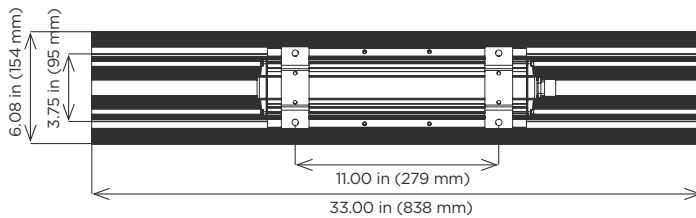
### HDL1



### HDL2



### HDL3



*HDL2s in an electrical control room*

## Ordering Information

**Example:** HDL-2-UNIV-DP-SM

Fixture	Circuit Boards	Voltage	Lens <sup>2</sup>	Mounting	Option	Generation
HDL	1	UNIV	DP	SM	EMB <sup>1</sup>	V2 <sup>3</sup>
	2	277-480 <sup>4</sup>				
	3					

### Circuit Boards

- 1 One circuit board (2850 lumens)
- 2 Two circuit boards (5700 lumens)
- 3 Three circuit boards (8550 lumens)

### Voltage

- UNIV 120-277V, 50-60Hz
- 277-480 <sup>4</sup> 277-480V, 50-60Hz

### Lens <sup>2</sup>

- DP Diffuse polycarbonate

### Mounting

- SM Surface/conduit mount

### Option

- EMB <sup>1</sup> Emergency battery backup

### Generation

- V2 <sup>3</sup> Version 2

### Notes

- 1 Not ETL/cETL Listed
- 2 Additional lens options sold separately. See accessories below.
- 3 V2 standard on HDL-2. Not available on HDL-1 or HDL-3.
- 4 Contact factory for availability.

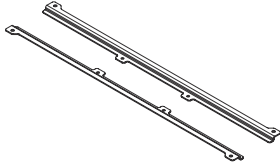
**Special Projects:** We may be able to accommodate your special projects, so please don't hesitate to ask about additional options. Minimum order quantities and/or extended lead times will apply. Contact your Phoenix representative with specific inquiries.

# HDL-LED Series

Heavy Duty Linear LED

**PHOENIX**<sup>®</sup>  
DURABILITY X DESIGN™

## Accessories (order separately)



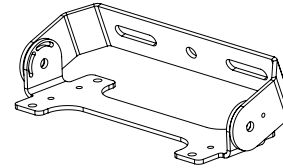
### HDL Retrofit Bracket for LFSB/RSL fixtures

RFBKTHDL1-RSL

RFBKTHDL1-LFSB2 (LFSB 2 foot)

RFBKTHDL2/3-RSL

RFBKTHDL2/3-LFSB4 (LFSB 4 foot)



### Harp Kits

KIT-HARP-HDL1 (HDL1)

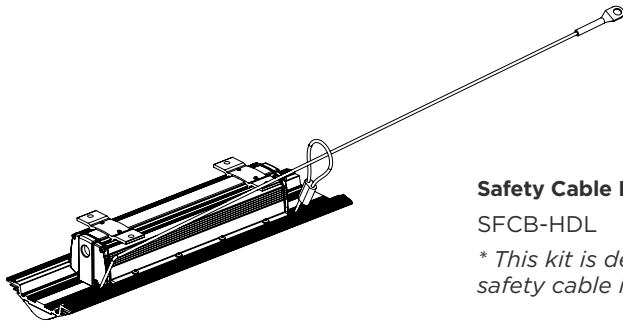
KIT-HARP-HDL2/3 (HDL2 and HDL3)

### Lens Kits\*

HDL-CP Clear polycarbonate lens kit

\* Contact factory

\* Note: One lens kit is required per circuit board (i.e. an HDL2 requires two (2) lens kits).



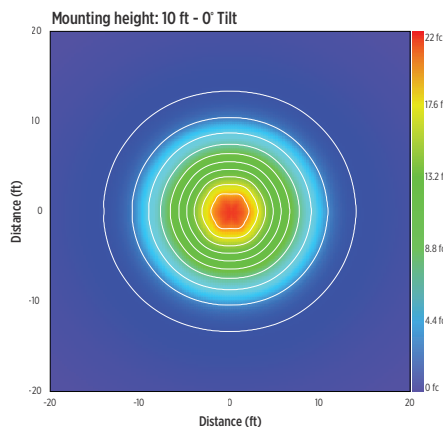
### Safety Cable Kit\*

SFCB-HDL

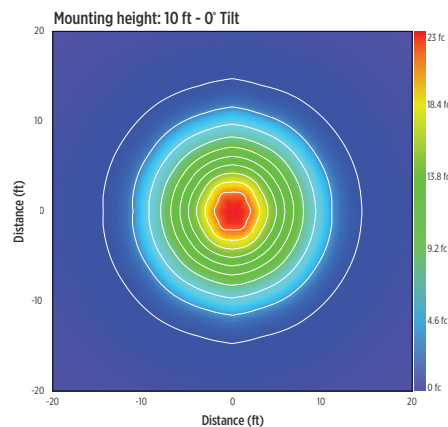
\* This kit is designed to work with non-EMB models only. Contact factory if a safety cable is required for an EMB model.

## Isolux Charts

### HDL2 UNIV-DP-SM (standard)



### HDL-2-UNIV-CP-SM (accessory)



Product design and specifications are subject to change without notice. The most current version of this specification sheet can be found at [www.phoenixlighting.com](http://www.phoenixlighting.com).