

PHOENIX[®]
DURABILITY X DESIGN™



SturdiLED[®]

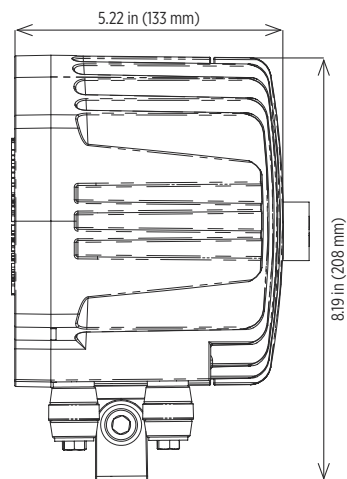
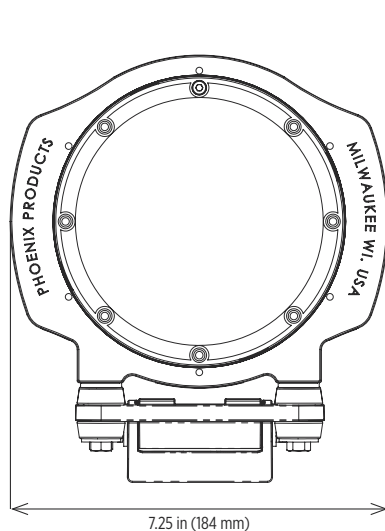
Super-rough Service LED Floodlight

US Design Patent No. US D708,776

Extreme shock and vibration resistance; designed to replace low-wattage floodlights
For use on shovels, blasthole drills, utility vehicles, towers and other demanding applications

Durable, compact design for the world's harshest environments
LED technology increases efficiency, eliminates maintenance and supports green initiatives

Dimensions



Specifications

Construction	Marine grade cast aluminum housing
Finish	Black thermoset powder coat finish
Hardware	Marine grade (316) stainless steel external hardware
Lens	Impact-resistant, UV-stable polycarbonate Replaceable Flood (45°) beam angle - standard Spot (28°) accessory kit (STL-28D)
Light source	Lumileds Luxeon T light emitting diodes (LED) - standard 37W, 2900 lumens CRI ≥ 74 CCT 5300K Red Osram light emitting diodes (LED) (RED) 37W, 2150 lumens 625 nm Conformal coated circuit board 50,000 hour rated life
Power source	120-277V, 50/60Hz (UNIV) Fully potted Replaceable Over-voltage, over-current and short-circuit protection
Wiring	72.00 inch (1829 mm) cord with pigtail NEMA 5-15 plug accessory kit
Ambient operating temperature	-30°C to +50°C
Mounting	Shock mount base - standard Stainless Steel Harp Kit (STL-HRP) Four (4) Bolt Retrofit Kit (STL-4B)
Weight	Fixture: 9.5 lb (4.3 kg) Packaged: 11.0 lb (5.0 kg)
Visor accessory	Protects lens, directs light and reduces glare (STL-VIS)
Warranty	5 years

Compliances

ETL/cETL Certified to:

- UL 1598 Suitable for Wet Locations
- UL 1598A Marine Outside Type (Saltwater)
- CSA C22.2 No. 250.0

CE

ABS

IP67 rated

LM79 and LM80 reports available

Ordering Information

Example: STL-HI-45-UNIV

Fixture	Wattage	Beam Angle	Voltage	Option ¹
STL	HI	45	UNIV	RED

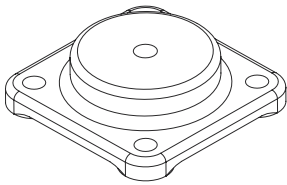
Wattage	Beam Angle	Voltage	Option ¹
HI 37W, 2900 lumens	45 Flood (45°) beam angle	UNIV 120-277V, 50/60Hz	RED Red Osram LEDs, 625nm, 2150 lumens

Notes

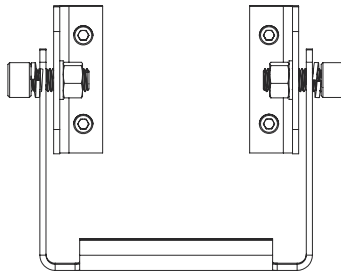
1 Standard fixture is provided with 5300K Lumiled LEDs

Special Projects: We may be able to accommodate your special projects, so please don't hesitate to ask about additional options. Minimum order quantities and/or extended lead times will apply. Contact your Phoenix representative with specific inquiries.

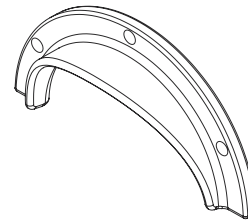
Accessories (order separately)



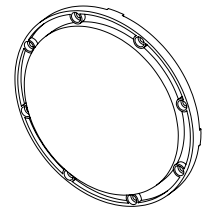
Four (4) Bolt Retrofit Kit
STL-4B



Stainless Steel Harp Kit
STL-HRP



Visor Kit
STL-VIS



28° Lens Kit
STL-28D

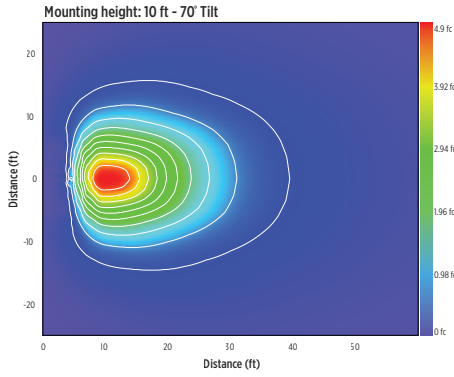
NEMA 5-15 Plug Kit

PLG-515

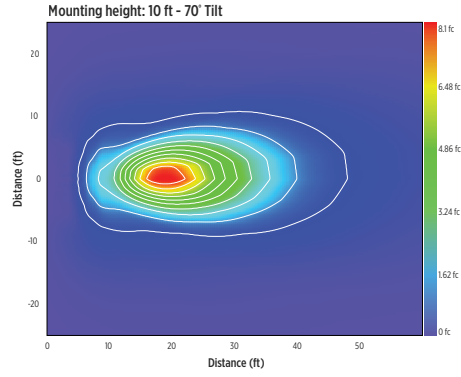


Isolux Charts

45° Beam (standard)



28° Beam (accessory kit)



Cover photo: SturdiLED shown at boom point of a dragline boom

Product design and specifications are subject to change without notice. The most current version of this specification sheet can be found on our website: www.phoenixlighting.com.